









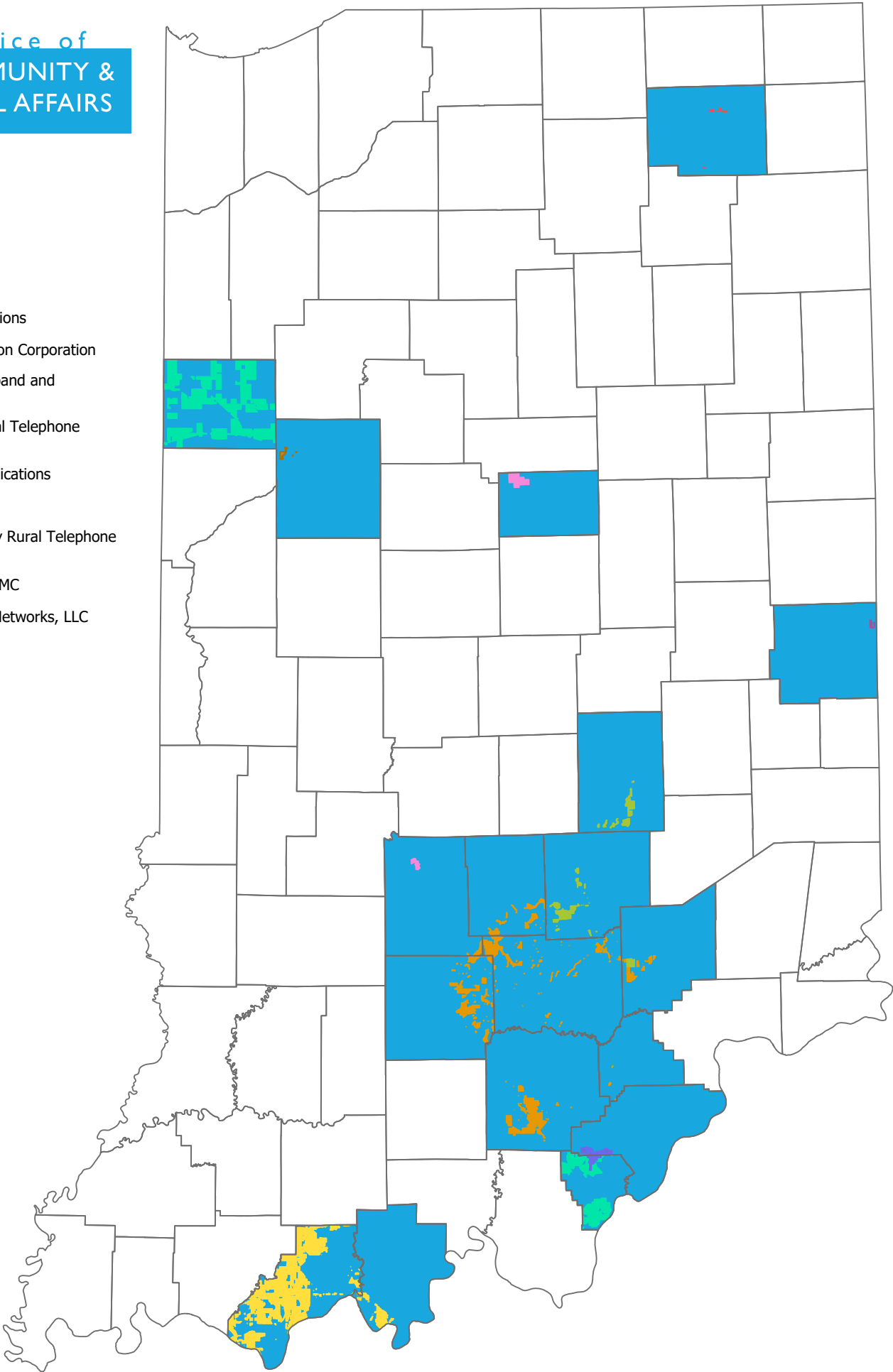


Next Level Connections - Census Blocks Receiving Awards



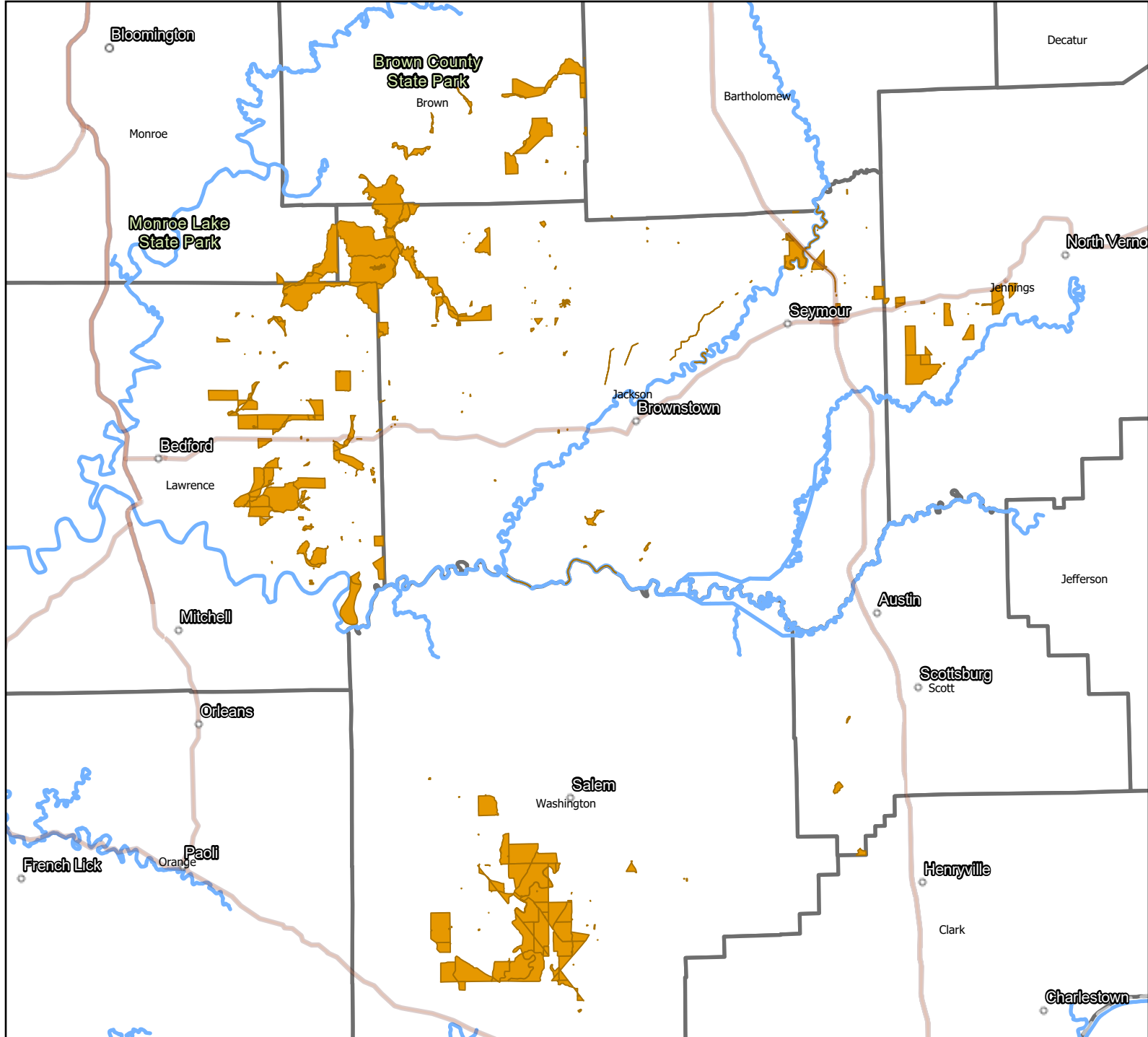
Applicant

-  LigTel Communications
-  Miles Communication Corporation
-  New Lisbon Broadband and Communications
-  Perry-Spencer Rural Telephone Cooperative
-  Smithville Communications
-  Tipmont REMC
-  Washington County Rural Telephone Cooperative
-  Jackson County REMC
-  Mainstream Fiber Networks, LLC
-  Counties

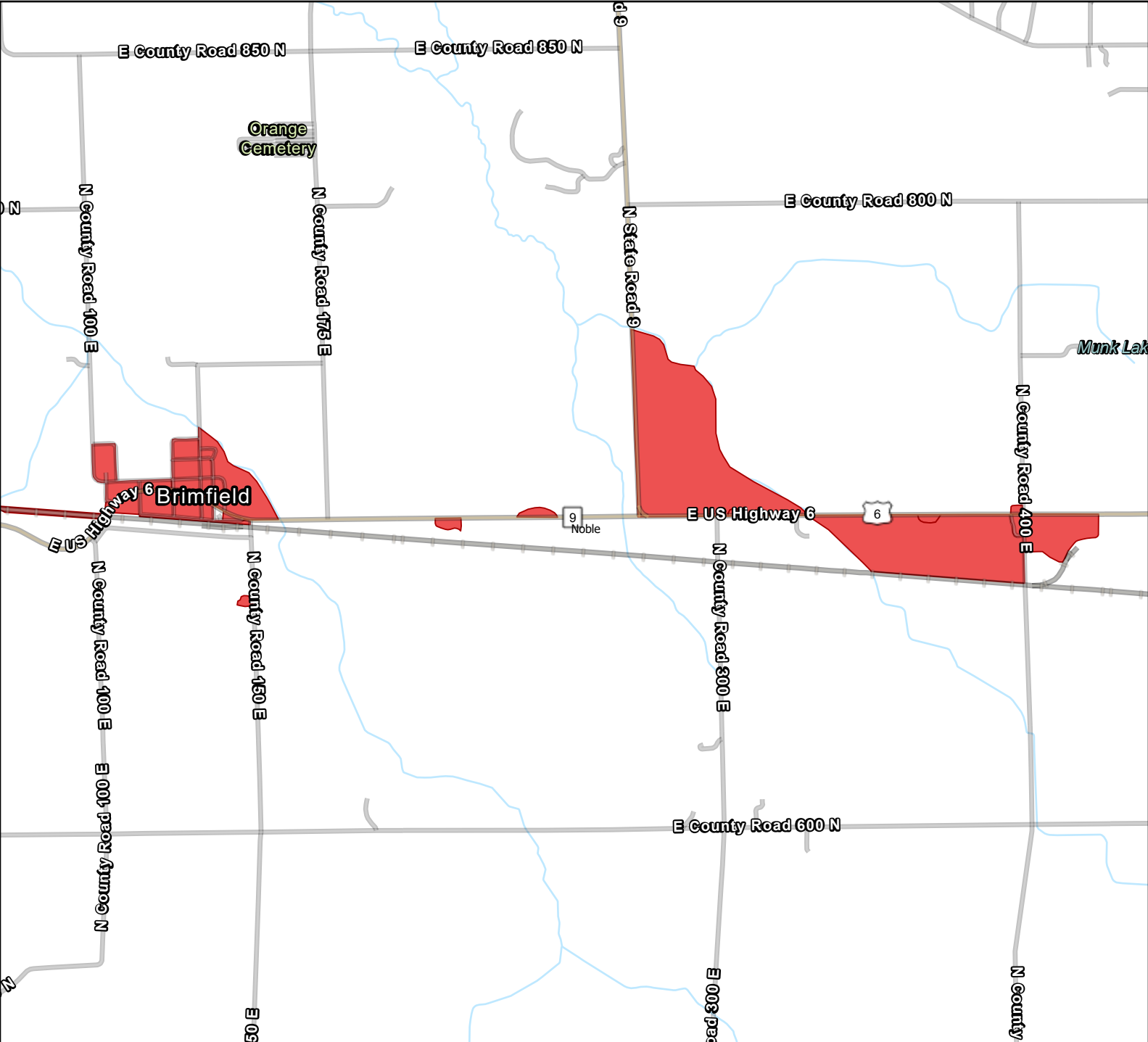


Next Level Connections

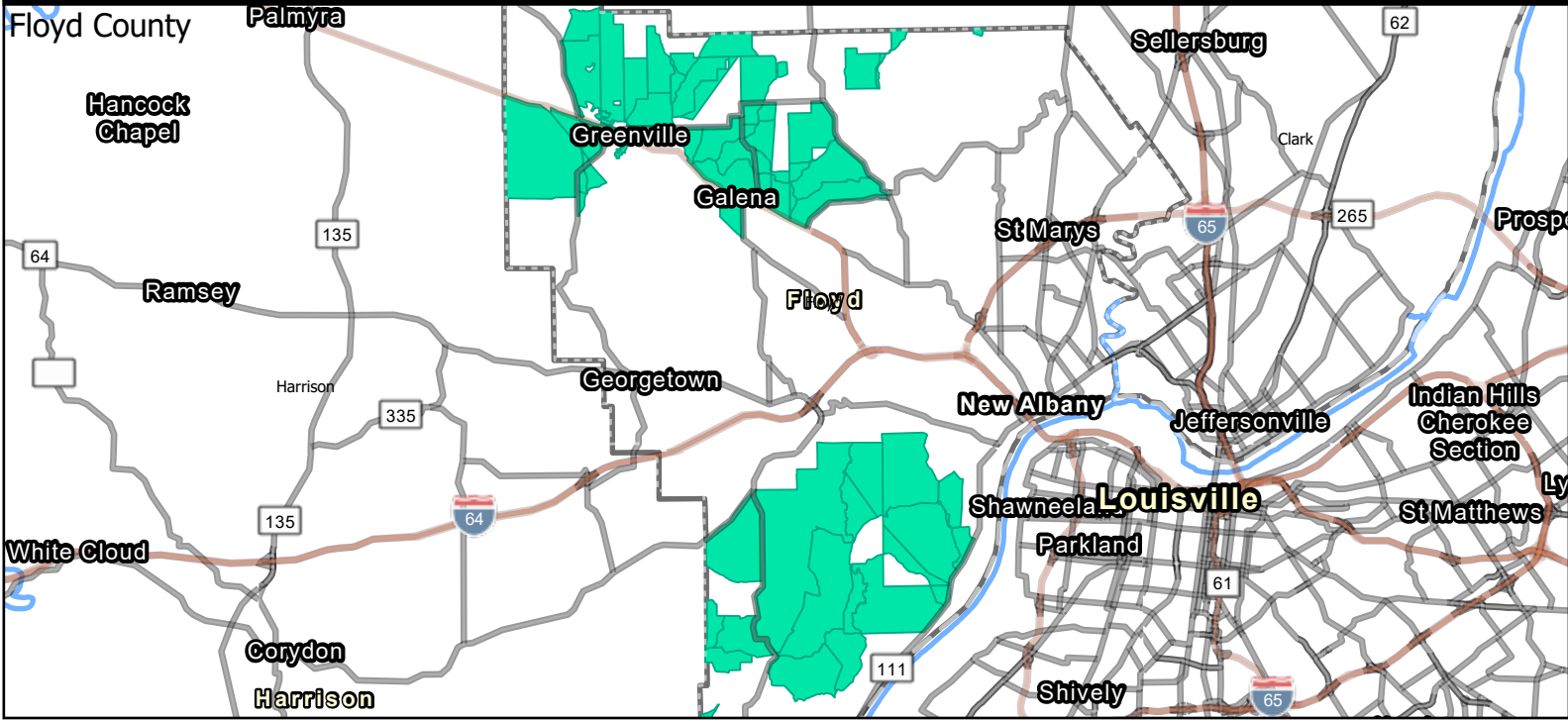
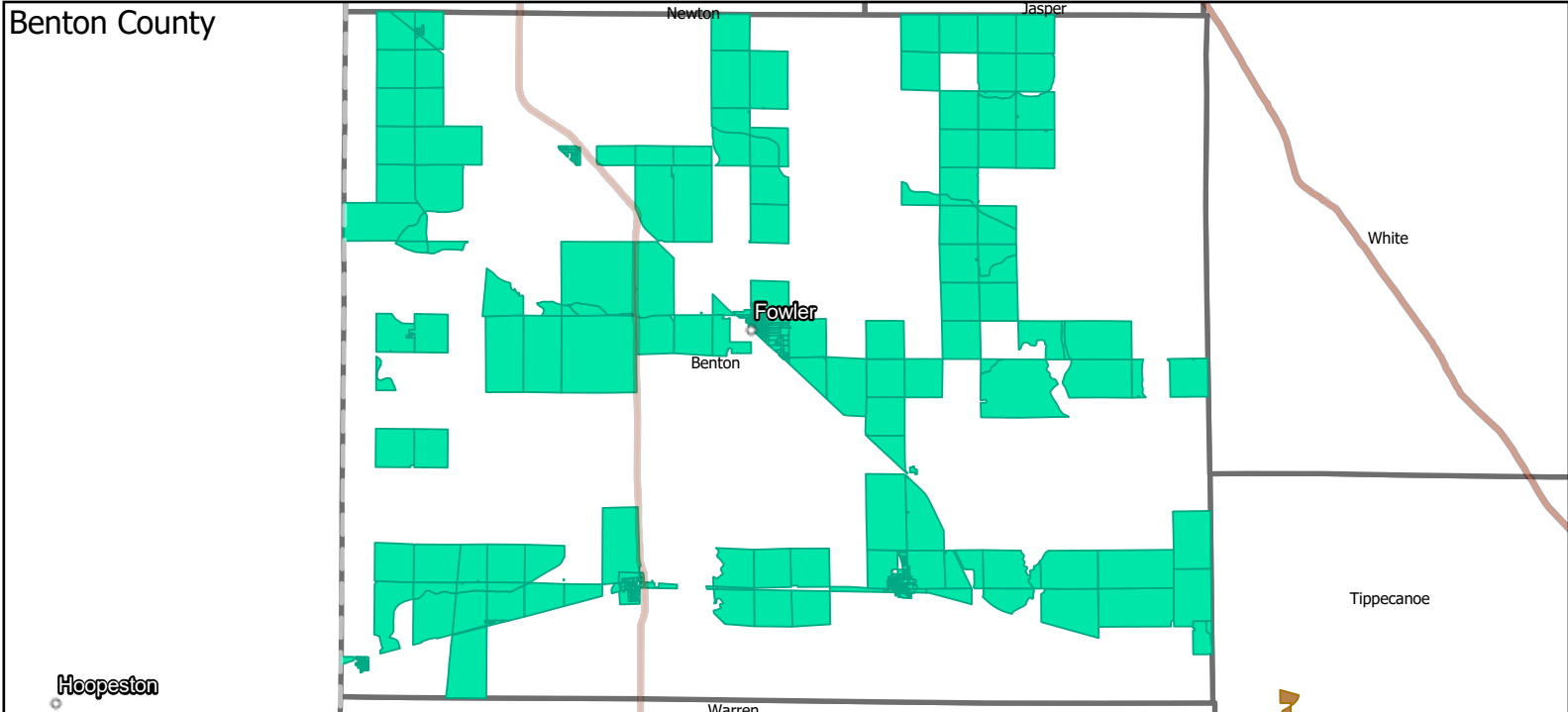
Jackson County REMC



Next Level Connections LigTel Communications

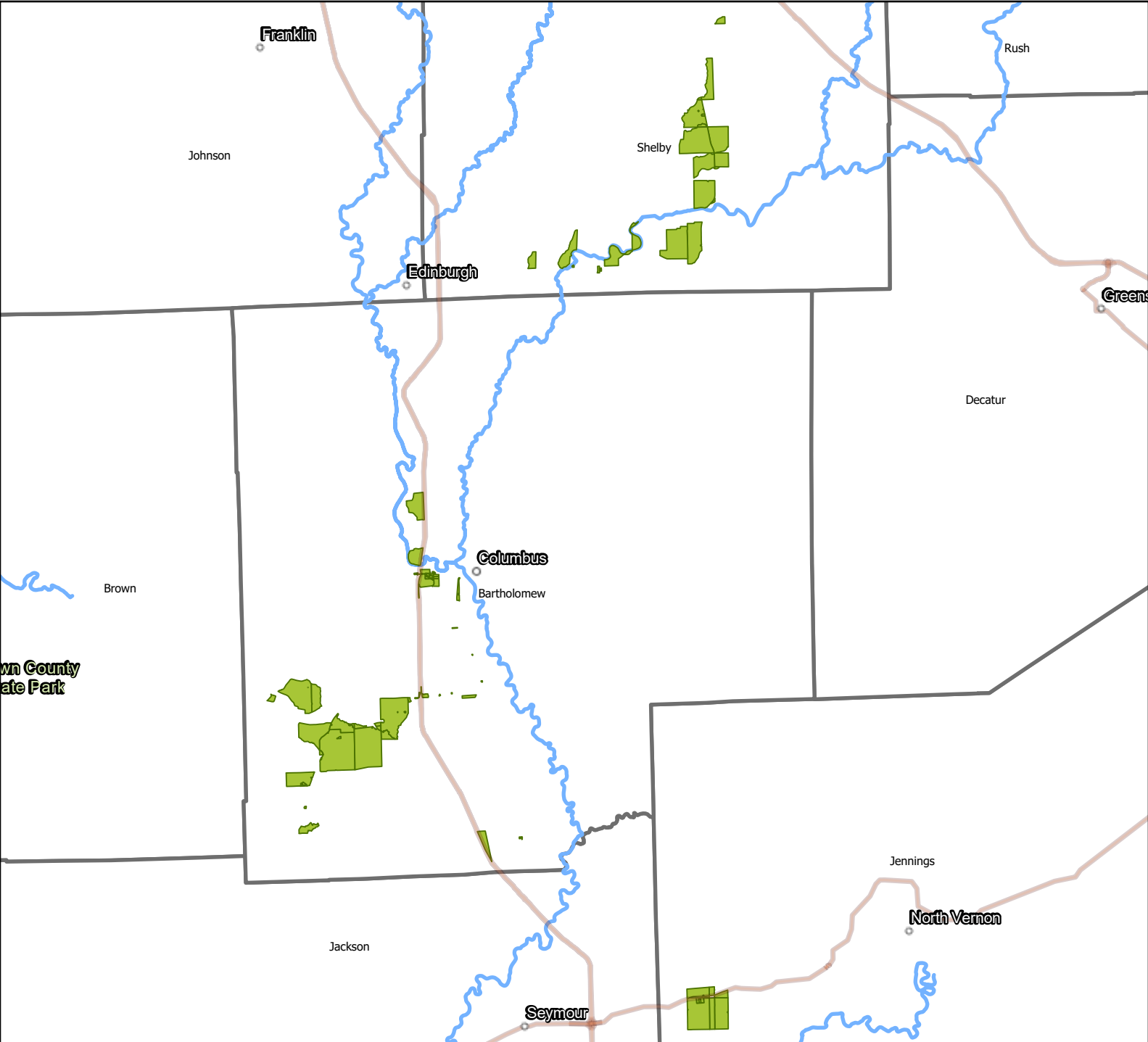


Next Level Connections Mainstream Fiber Networks, LLC



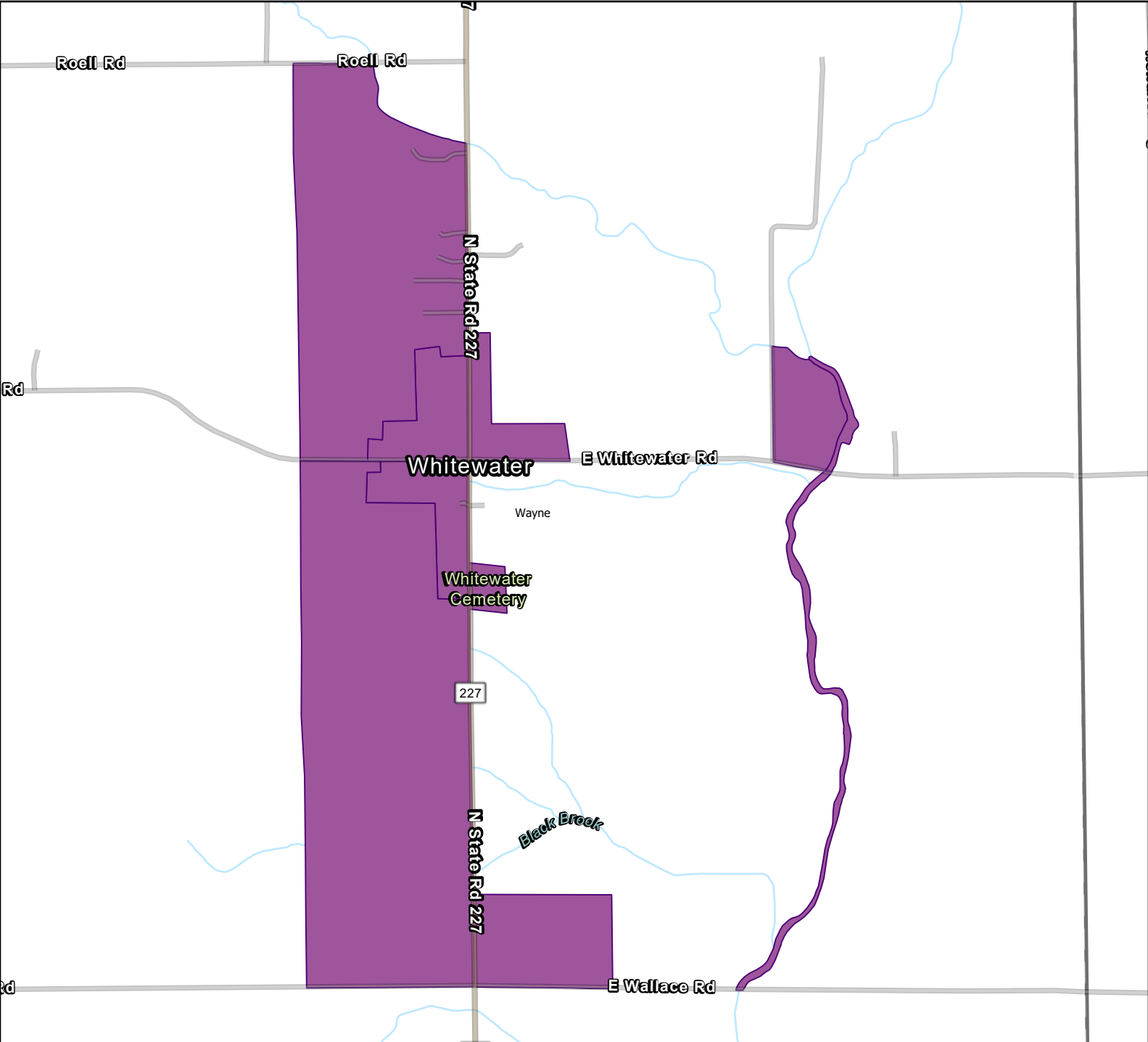
Next Level Connections

Miles Communication Corporation



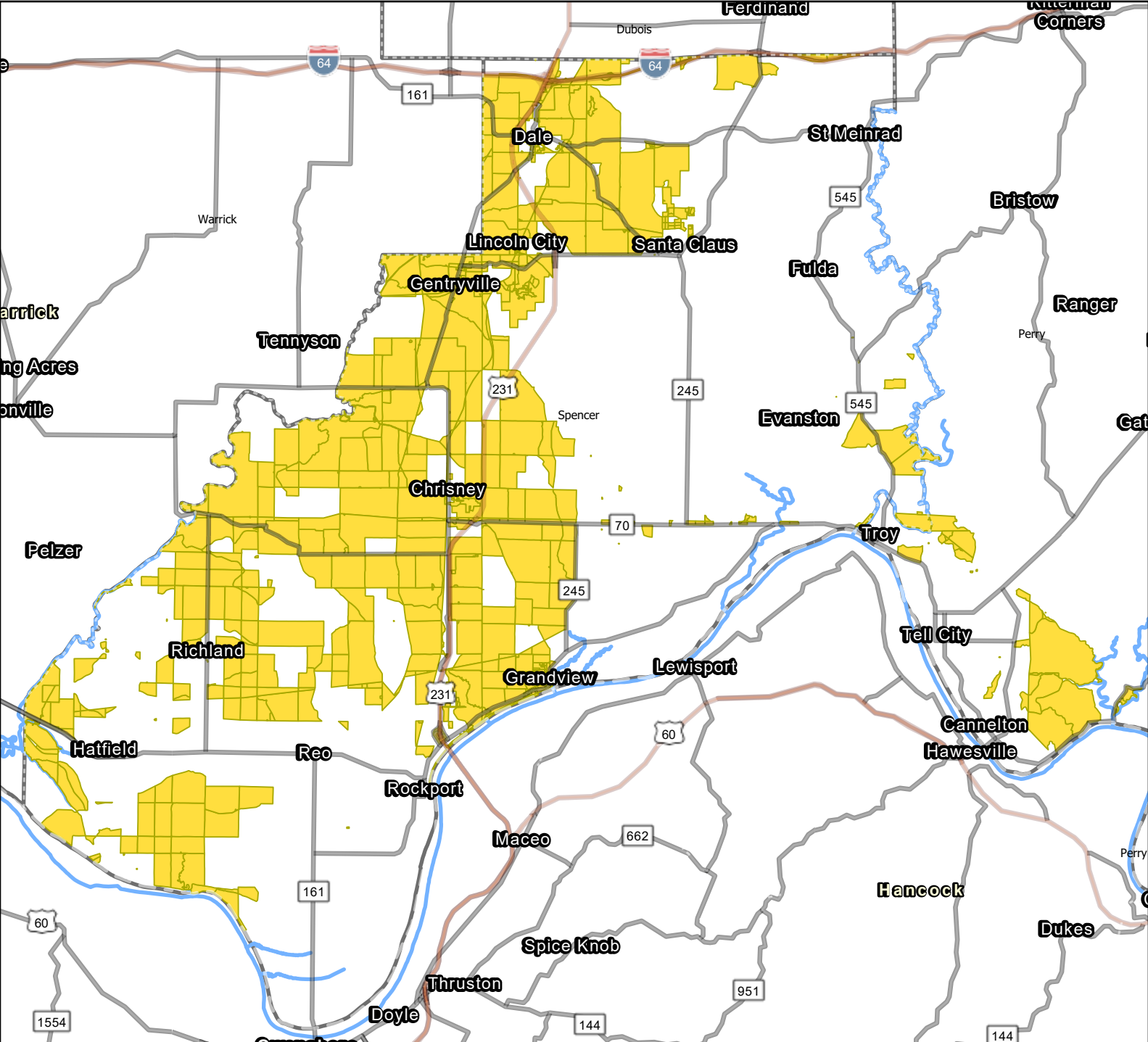
Next Level Connections

New Lisbon Broadband and Communications

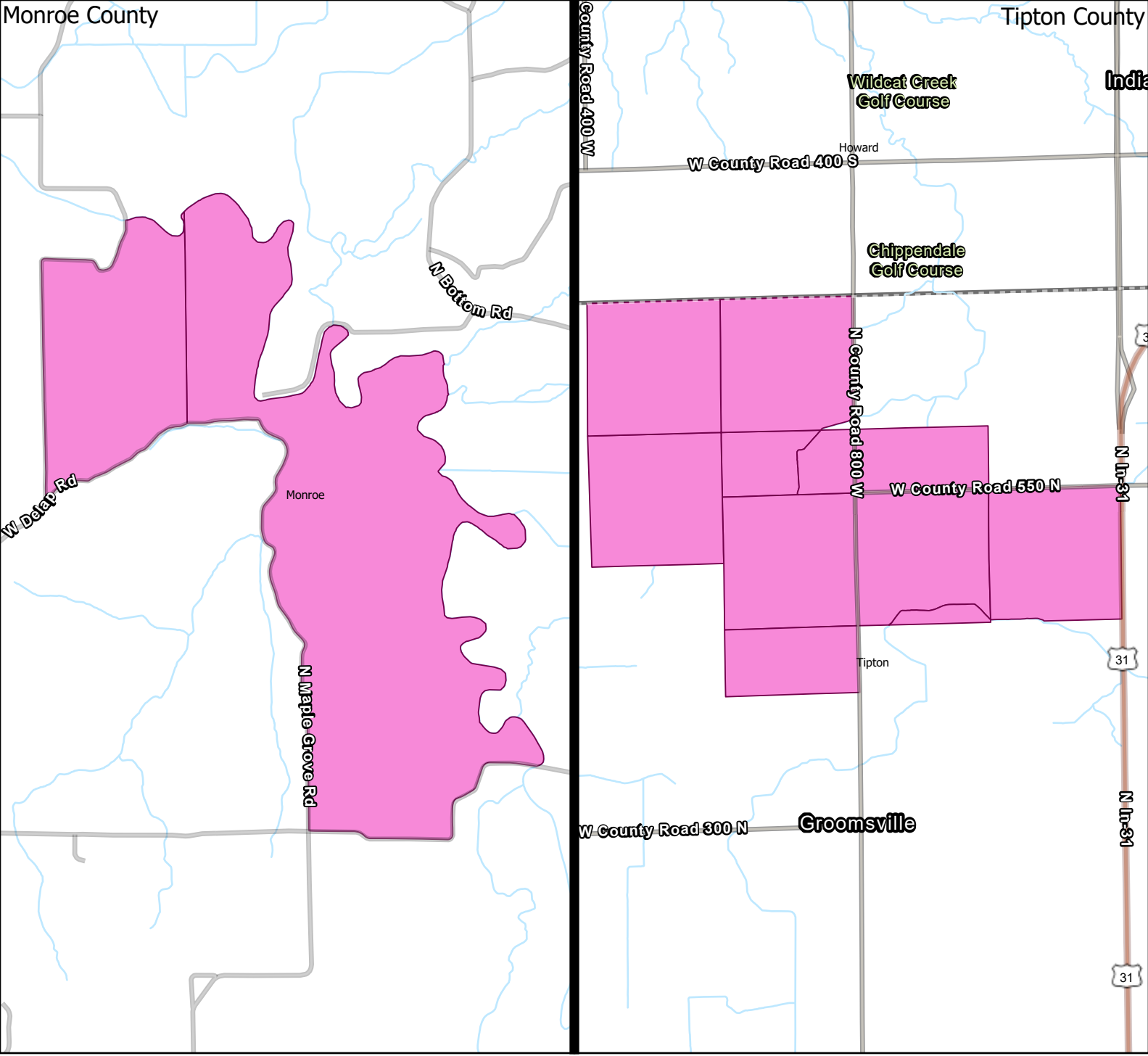
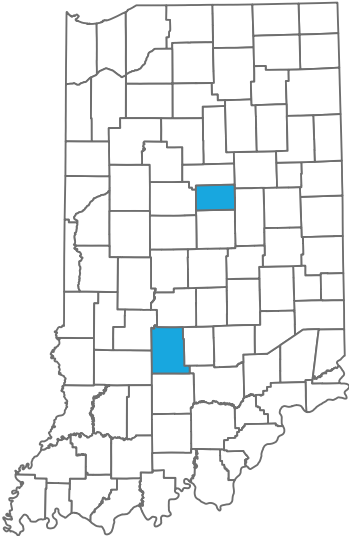


Next Level Connections

Perry-Spencer Rural Telephone Cooperative

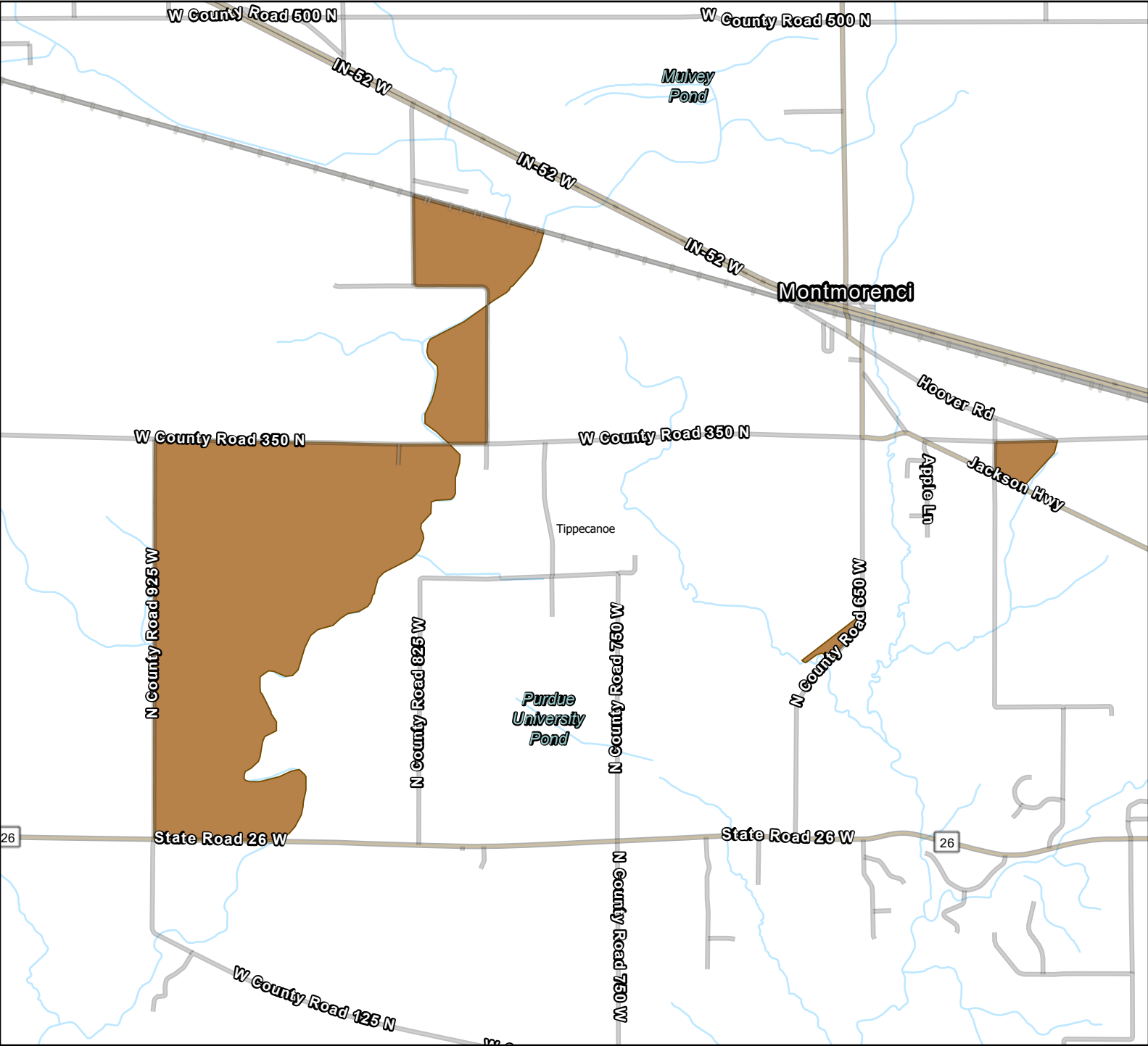


Next Level Connections Smithville Communications



Next Level Connections

Tipmont REMC



Next Level Connections

Washington County Rural Telephone Cooperative

