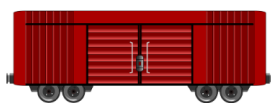


Nitrogen Load Reductions From Practices Actively in 2023

3,683,796 Lbs. of Nitrogen Reduced by:
By 38,730 Practices Installed in 2023

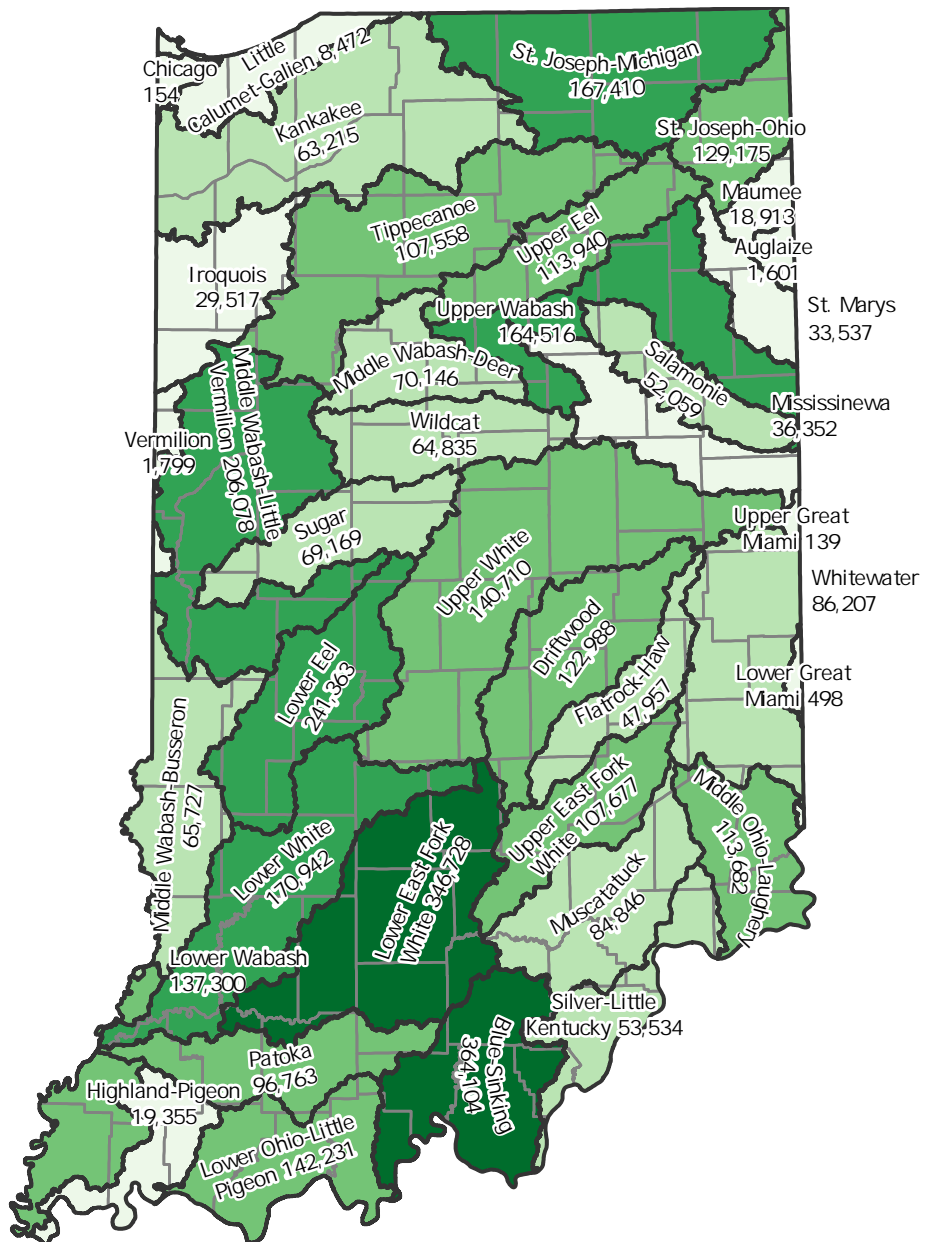
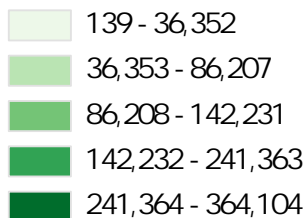


Since 2013, voluntary conservation efforts from Indiana's private landowners, with support from the Indiana Conservation Partnership (ICP), have reduced over sediment and nutrients from entering Indiana's waterways.



x 18

Nitrogen



Sediment load reductions are Based on EPA Region 5 Model analyses conducted on 38,730 conservation practices installed by the Indiana Conservation Partnership (ICP) since 2013 that actively reduced sediment and nutrients in 2023. This effort does not include the many unassisted practices designed and installed solely by a private landowner without ICP assistance. Conservation practices were considered to be actively reducing sediment and nutrients in 2023 based on their date of installation and projected lifespan.

The Region 5 model only estimates the reduction in sediment bound nutrients. Reductions in dissolved nutrients are not accounted for. To learn more about Indiana's nutrient reduction strategy visit:

<https://www.in.gov/isda/divisions/soilconservation/indiana-state-nutrient-reduction-strategy/>
For questions and comments email: ISDANutrientReduction@ISDA.in.gov

Last Updated - 3/25/24
Sam Stroebel | ISDA