

AGENDA
STATE SOIL CONSERVATION BOARD MEETING
May 12, 2015
Lake Maxinkuckee Depot
Culver, IN

- I. 9:30AM: Call to Order**
- II. Approve Minutes of March 2015**
- III. Clean Water Indiana**
 - a. Clean Water Indiana Grants – Jordan Seger
 - b. Clean Water Indiana Budget Update- Jordan Seger
 - c. Scholarship/Sponsorship Training funds
 - a. FY 2014-2015
 - b. FY 2015-2016
- IV. State Soil Conservation Board Business**
 - a. SSCB Chairman’s Report-Scott Ham
 - b. SSCB Meeting at 2016 IASWCD Annual Conference
- V. Soil and Water Conservation Districts**
 - a. Ohio SWCD- Geneva Tyler
 - b. Delaware County Letter of Support-Jordan Seger
- VI. ISDA Updates**
 - a. Director’s Report- Jordan Seger
 - b. Technical Report- Julie Harrold
 - c. Agricultural Affairs-Meg Leader
 - d. Accountability and Technology-Deb Fairhurst
 - e. District Support-Geneva Tyler
 - f. Water Quality and CREP-Jordan Seger
- VII. Conservation Partner Reports**
 - c. IASWCD Report
 - b. IDEM Report
 - c. DNR Report
 - d. Purdue Report
 - e. FSA Report
 - f. NRCS Report
- VIII. Public Comment**
- IX. Next Meeting:**
2015 Meeting Dates
 - July 14, The Nature Conservancy,
Indianapolis
 - September 16, The Nature Conservancy,
Indianapolis
 - October 27, Sugar Ridge Fish and Wildlife
Refuge, Pike County
- X. Adjourn**

*****PLEASE NOTE*****

This agenda is in DRAFT FORM. Open Door Law does not prohibit the public agency from changing or adding to its agenda during the meeting.



State Soil Conservation Board

May 12, 2015

Clean Water Indiana Grants



Program Updates

Clean Water Indiana Competitive Grants

All CWI 2015 grant agreements have now been fully executed by the state. I have received claim vouchers for all but 1 of the grantees and expect the final voucher soon. About 1/3 of the 2015 CWI grantees have started tracking their grant in SharePoint either via the grant reporting form or conservation practice tracking. These reports will become more prevalent as construction season gets underway. The two remaining 2012 CWI grants have final reports due May 31st. I have been in contact with both of these districts regarding the final report deadline and expect both to be turned in on time. After I receive the final report for each grant, I will start the process to get them the final grant payment.

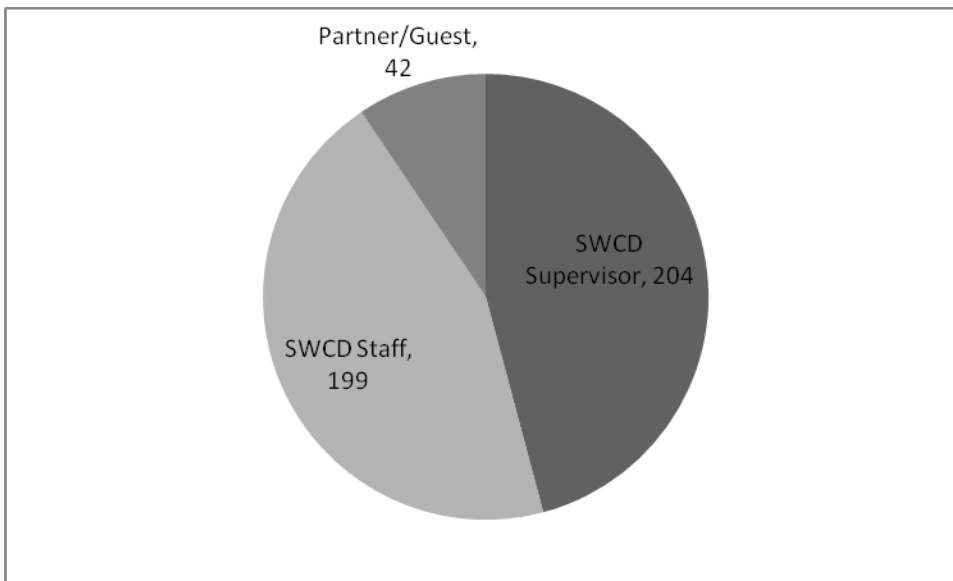
Annual Financial Report Grants

91 districts showed at least some local government funding on their Annual Financial Report to qualify for the statutory match. Working with grant services, districts started to receive grant agreements for signatures on April 1st. We asked districts to return signed grant agreements along with the accompanying forms by May 4th to comply with our end of fiscal year deadlines. As of Thursday, May 7th, we still had 4 agreements to be returned. To better assist districts with the grant paperwork and to answer the commonly asked questions I knew many districts would have, I hosted a webinar on April 8th. 38 people representing at least 20 districts logged on to watch it live. The webinar was archived onto the ISDA YouTube channel, and several others watched it on YouTube later. We have received positive feedback on the webinar and hope to host more in the future.

Fiscal Year (FY) 2014/2015 SWCD Supervisor and Staff Training Cost Share Program

Update: May 12, 2015

- **“Sponsorship” Cost Share:** funds were used for the following events (\$4,600.77 total):
 - August Chair/Vice Chair Workshop
 - Indiana District Employee Association (IDEA) Fall Conference
 - Leadership Institute: Conflict
 - Four March SWCD Region Meetings
- **“Scholarship” Cost Share:** funds were used for the following events (\$22,410 total):
 - IDEA Fall Conference (1 seat)
 - Conservation Selling Skills (2 seats)
 - Leadership Institute: Conflict (1 seat)
 - IASWCD Annual Conference (73 seats)
 - National Association of Conservation Districts Annual Meeting (3 seats)
 - SWCD March Region Meetings (4 seats)
- **Groups and number of seats funded by Cost Share (includes both sponsorship and scholarship):**



**Partners/Guests: this includes non-SWCD personnel (ISDA, NRCS, RC&D, Purdue, IASWCD, NCDEA & spouses) that attended a “sponsored” training and thus benefited from the training cost share as well.*

- **Funds:**
 - Original allocation: \$30,000
 - Funds spent to date: \$27,010.77
 - Remaining funds: \$2,989.23
- **Additional notes:**
 - 83 SWCD counties took advantage of the training cost share program
 - Additional Leadership Institutes were slated to receive cost share, but had to be cancelled due to lack of participation
 - Training cost share for FY 2013/2014 approximately reached 57 counties and totaled \$26,531.93



State Soil Conservation Board

May 12, 2015
DSC Technical Assistance Report

Field Staff Activities

January 1, 2015 – April 24, 2015

Resource Specialist Activities	Total
SWCD Board Meetings	98
ICP Meetings, Conference Calls, Webinars, etc.	235
Field Days	33
Training	73
Conservation Planning	199
Survey, Design and Inspections	364
Construction	11
Public Interaction	16,346
CREP – Met with Landowners	57

DSC Conservation Workload

January 1, 2015 – May 7, 2015

Action	Currently Reported
Technical Assistance	546
Practices Underway	149
Completed Practices	69
Practice Acres	2,958
Practice Feet	9,460
Field Acres	2,559
Nitrogen Reduction	7,594 lbs.
Phosphorus Reduction	3,805 lbs.
Sediment Reduction	2,964 tons
Total Watersheds (HUC8) Impacted	26

SSCB Meeting Technical Report, May 12, 2015 – Northeast Indiana region

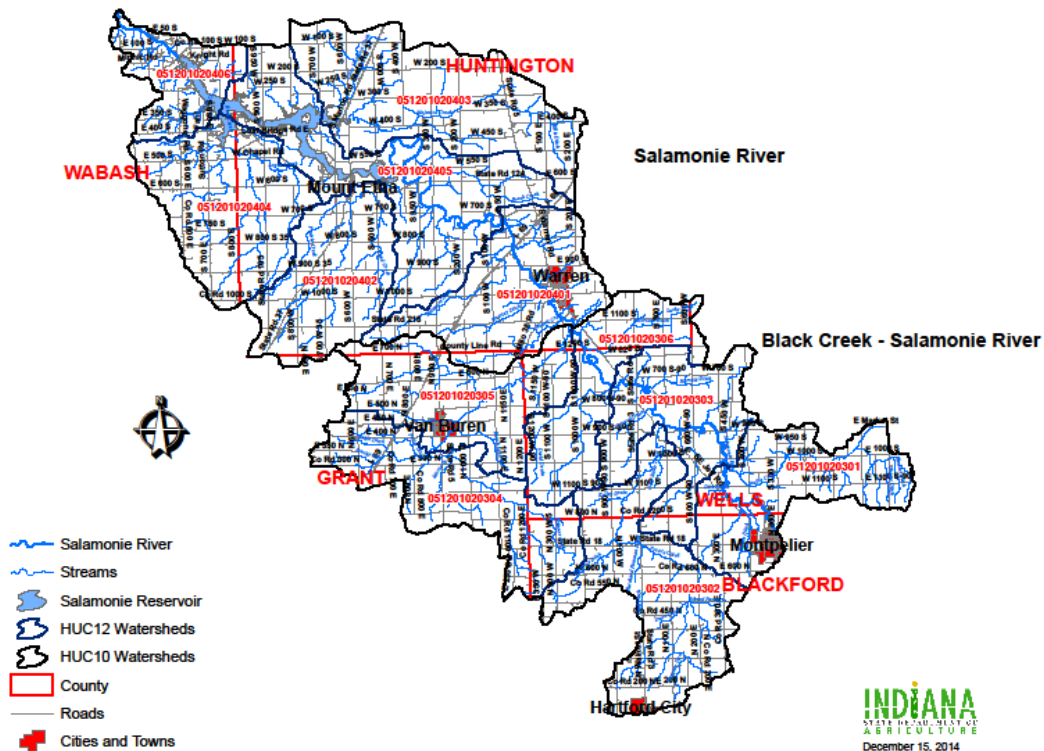
* Lower Salamonie Watershed Project and Upper Salamonie Watershed Project (drains to Upper Wabash WS)

There are two Resource Specialist that serve on both the Upper and Lower Salamonie Steering Committee's for the Watershed. The Lower Salamonie has a 319 Grant. The Lower Salamonie watershed is in the process of putting together a BMP ranking table for ranking BMP applications for their cost-share program which will start this fall.

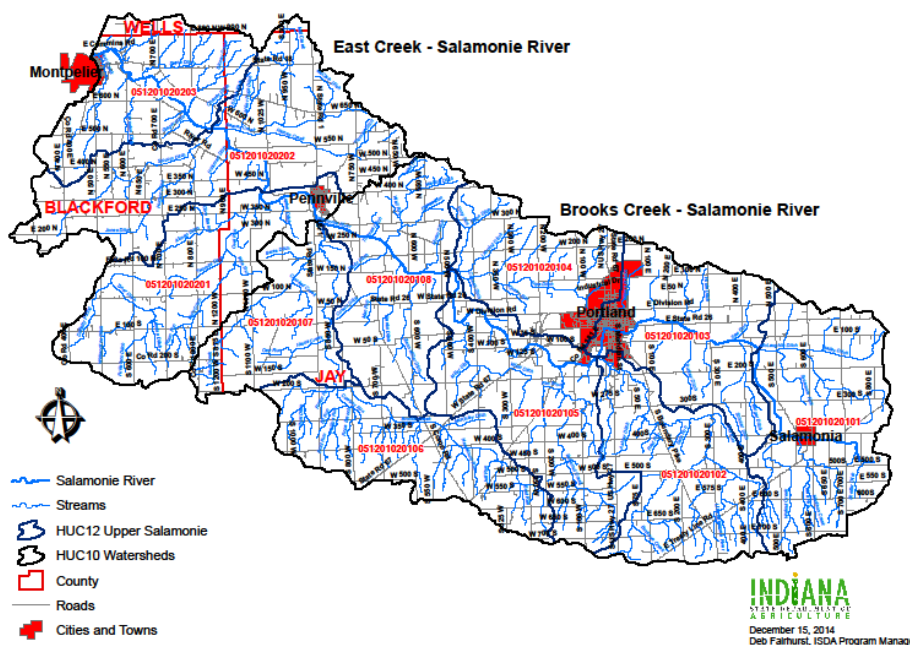
One of the Resource Specialists, Ted McCammon helped with doing a windshield survey of the Lower Salamonie WS in late winter and spring this year in order to rank the smaller 12 digit watersheds for cost share. Each bridge on every open ditch or creek, and the river were surveyed, as well as each culvert. Some of the things that were surveyed included stream depth and width, the land use of the adjacent field, condition of an adjacent crop field, whether buffer strips were present and their condition, whether there was cattle in stream, streambank erosion, any drain or tile outlets, etc. Ted assisted by doing the survey for 5 of the 12 digit watersheds.

The Upper Salamonie Watershed is now in the same process of doing the windshield survey. Ted has assisted the 319 Watershed Coordinator on 2 of the 12 digit watersheds in the Upper Salamonie WS. As part of his assistance to the Steering Committee of the Lower and Upper Salamonie watersheds, Ted maintains a Facebook page for the watershed to inform the public on what they do, called "Salamonie River Watershed".

Lower Salamonie River Watershed



Upper Salamonie River Watershed



* CREP activity in the Northeast:

- Upper Wabash
 - 3 new projects signed up this year so far (Wetland Restoration and two Filter Strips)
 - 3 existing projects that will be completed this year (Two WL Restorations and One Bottomland Timber Establishment)
- Tippecanoe
 - 10 existing WL Restoration practices that are re-enrolls
- Upper White
 - 7 existing projects that will hopefully be completed this year (Bottomland Timber Establishment, and Riparian Buffers)

* RCPP Projects:

- WLEB project: focuses on practices that reduce phosphorus impact, and trains Certified Crop Advisors on using a new Nutrient Management Plan that will be used by Indiana, Ohio and Michigan. There is a newly developed handout available if you would want one.
- Notre Dame project: couples Two-Stage Ditch practice and Cover Crops in three different watershed in three different counties. It involves Kosciusko County, Jasper County, and Howard County.
- St. Joseph Watershed: Involves Steuben, LaGrange, Noble, Kosciusko, Elkhart and St. Joseph Counties and works with counties in Michigan also. Focuses on adopting BMPs in the watershed.

* SWCD Field Days (upcoming)

- Kosciusko, Fulton and Marshall Counties are planning to have an Irrigation workshop this summer
- LaGrange County is planning a Cover Crop Field Day in August
- Blackford & Grant Counties have a Cover Crop plot (through CWI) and are planning a future field day.
- DeKalb County – Andersons Field Day planned for summer time.
- 4-County Forestry Field Day (Kosciusko, Marshall, Elkhart and St. Joseph) in September
- Fulton and two NW counties are planning a Legislative Bus Tour with a TBD date.

* There is a push more towards Soil Health and Cover Crops so the Engineering Workload has gone down overall in the NE area. Attached are sheets that show the Engineering Workload for the Albion and Huntington CIT Areas in Northeast Indiana as of May 8, 2015.



State Soil Conservation Board

May 12, 2015

Agricultural and Environmental Affairs Program Manager



Program Updates

➤ INfield Advantage

- On Farm Network is now officially INfield Advantage. The new website, www.INfieldAdvantage.org is active and the local groups have the new materials.
- The local groups are working on field enrollments. We expect about 400 growers involved this year with about 1,000 fields covering over 70,000 acres. We won't have final numbers until mid-July.
- We expect to have a grower participating in the Multi-State On Farm Partnership's (MOFP) soybean replicated strip trial. MOFP's project will consist of 18 strip trials in 11 states. All strip trials will be comparing 15 in spacing with 30 in spacing. Dr. Casteel at Purdue University may also have a MOFP strip trial.

➤ Red Gold Environmental Stewardship Program

- The 2015 Stewardship Award program received a record 46 applications from Red Gold growers (92% of their 2015 growers). Initial ranking lead to a four-way tie for fourth place, so there will be seven finalists this year. In early July, Julie Harrold and I will conduct site visits. The winner will be announced at their July 31 Grower Meeting.

➤ Roadside Pollinator Program

- ISDA is working with INDOT to expand INDOT's project to use the highway right-of-ways to plant native flowers that will be beneficial to pollinators.
- ISDA is hosting a round table of interested parties in June.



State Soil Conservation Board

May 12, 2015

Accountability and Technology



Program Updates

2014 Conservation Accomplishments

The 2014 ICP Conservation Accomplishments Report was completed in April and presented to the ICP Leaders. You can view the report online at [Indiana's Nutrient Reduction Strategy](#).

Data analyses are completed for the 2013 and 2014 cumulative nutrient load reductions based on the lifespan of the practice. Lifespan categories included 1, 5, 10, 15, 20, and 40 years. Maps will be completed this week featuring the 2013 and 2014 cumulative load reductions for sediment, nitrogen and phosphorus. The maps will be added to the 2014 ICP Conservation Accomplishments Report, as well as the 2014 Region 5 Model Nutrient Load Reductions Poster. Both will be available online this week at the link above.

ICP Accomplishments Web Application

The 2014 ICP Report web pages are completed and ready for SWCDs to enter their 2014 success stories and photos. A new tutorial was created to guide SWCDs on the new look and feel of WebCMS. District Support Specialists were trained on the revised software and are ready to assist those SWCDs who may have difficulty posting their success stories.

2014 Fall Cover Crop and Tillage Transect

The fall tillage transect was completed in April. Shannon Zezula is currently crunching the data and will be providing the statewide summaries soon. They will be posted online at [Conservation Tillage Program](#).

2015 Spring Tillage Transect

ICP Leaders emailed their respective field staff the latest documentation which will assist them with the process and procedures for conducting the survey. District Support Specialists are rolling out the Excel spreadsheets used to capture the data and disseminating them to their respective SWCDs. The 2015 Spring Tillage Transect is officially underway!

CTIC Remote Sensing Cover Crop and Tillage Project

CTIC received funding from the Howard G. Buffet Foundation to conduct a pilot project in Indiana which will utilize Landsat data to determine the statewide acreage of cover crops and no-till. Applied GeoSolutions (New Hampshire) will be conducting the analyses. Recently, Applied GeoSolutions tested their model on the Maumee River Watershed in Ohio. Extensive validation occurred resulting in data containing errors of less than 10 percent. The Indiana pilot will utilize historical tillage data, as well as the 2015 Spring Tillage results. Six counties will be used to ground-truth the results including Allen, Decatur, DeKalb, Knox, Ripley and Tippecanoe. The project is anticipated to take 8-9 months to complete.



Indiana Conservation Partnership

**2014 Conservation Accomplishments and
Region 5 Model Load Reduction Report**

April 10, 2015

Table of Contents

Indiana Conservation Partnership.....	1
Introduction	2
Methodology	3
Indiana Conservation Partnership Annual Workload Accountability Data Flow	5
2014 Indiana Conservation Partnership Conservation Accomplishments Map.....	6
Practices Installed by County.....	8
Indiana Conservation Partnership Initiatives Program Descriptions	9
2014 Sediment Nutrient Load Reductions Map	12
2014 Nitrogen Nutrient Load Reductions Map	13
2014 Phosphorus Nutrient Load Reductions Map.....	14

This document along with information about Indiana’s Nutrient Reduction Strategy can be found online at <http://www.in.gov/isda/2991.htm>.

Indiana Conservation Partnership:



[Indiana Association of Soil and Water Conservation Districts and our 92 SWCDs](#)



[Indiana Department of Environmental Management](#)



[Indiana Department of Natural Resources](#)



[ISDA Division of Soil Conservation](#)



[Purdue Cooperative Extension Service](#)



[State Soil Conservation Board](#)



[USDA Farm Service Agency](#)



[USDA Natural Resources Conservation Service](#)

Introduction:

The Indiana Conservation Partnership is comprised of eight Indiana agencies and organizations who share a common goal of promoting conservation. To that end, the mission of the Indiana Conservation Partnership is to provide technical, financial and educational assistance needed to implement economically and environmentally compatible land and water stewardship decisions, practices and technologies.

In 2013, members of the Indiana Conservation Partnership (ICP) began using the Environmental Protection Agency's (EPA) Region 5 Nutrient Load Reduction model to determine the impact of installed conservation practices implemented by the ICP Conservation Implementation Teams on Indiana's water quality. The ICP adopted the Region 5 Nutrient Load Reduction model to analyze conservation practices funded by state programs such as the Indiana State Department of Agriculture's Clean Water Indiana Program and the Indiana Department of Natural Resources' Lake and River Enhancement Program, as well as federally funded programs including EPA's Section-319 Program and USDA's Farm Bill Programs.

A federal furlough and the late passage of the 2014 Farm Bill resulted in a decrease in installed practices for calendar year 2014. Enrollments for many of the Farm Bill programs including CRP and EQIP were delayed resulting in a shorter window for planning, surveying and construction of conservation practices to occur. Even with the long delay, the ICP Conservation Delivery Teams installed 21,012 conservation practices. A total of 11,365 of those practices could be analyzed using the Region 5 Nutrient Load Reduction Model, which estimated annual reductions of sediment, as well as nitrogen and phosphorus tied to sediment erosion (brown, green and blue maps, respectively). These reductions continue for the life of the practices modeled (e.g., grassed waterways are designed to be 10-year practices, while cover crops are 1-year practices, established annually). Reductions in dissolved nutrients, such as dissolved reactive phosphorus (DRP) and nitrate (NO₃), are not accounted for by the Region 5 Model. The remaining ICP practices were not modeled because they were not associated with sediment loss, or were not covered by the EPA Region 5 Model. This effort represents ICP-assisted conservation in Indiana. Data does not include the many unassisted practices designed and installed solely by a private landowner without ICP assistance.

Indiana is the only state in the country to adopt a model among so many partners to estimate conservation impact on a statewide scale. As part of Indiana's Nutrient Reduction Strategy, this modeling effort illustrates the continued success and challenges of conservation and serves as a tool to help set watershed priority and reduction targets, manage conservation resources, and to further stakeholder involvement at all levels of government within and across Indiana.

2013 and 2014 Conservation Accomplishments Comparison					
	Practices Installed	Region 5 Model Analyses	Sediment (tons/year)	Phosphorus (lbs./year)	Nitrogen (lbs./year)
CY2013	30,502	15,332	1,661,636	1,469,926	2,780,790
CY2014	21,012	11,365	996,762	1,137,921	2,120,554

Methodology:

The Indiana State Department of Agriculture's (ISDA) use of the EPA Region 5 load reduction model to estimate Nutrient and Sediment load reductions in Indiana is part of a collective effort by the Indiana Conservation Partnership (ICP) <http://iaswcd.org/icp/> to generate a comprehensive statewide picture of voluntary conservation impact across the state. Cooperation in this effort by local, state and federal partners in the ICP allows for conservation tracking and load reduction estimation at an order of magnitude greater than any single agency or entity could achieve alone. The ICP utilizes the end products of this process to establish baselines and measure load reduction trends by watershed for each calendar year, allowing for prioritization of workload and staffing needs, all while serving as a tangible component of the Indiana Nutrient Reduction Strategy.

The collection of practice data for the model is the first step in this effort. Several members of the ICP participate on this front end, which makes the Division of Soil Conservation's (hereafter referred to as the Division) use of the model and subsequent mapping possible. Practice information from several sources is consolidated by our Accountability and Technology Program Manager and then run through the model by Division field staff¹. These data include Clean Water Indiana and CREP conservation tracking data in Microsoft SharePoint (ISDA, Soil and Water Conservation Districts), practice data from Farm Bill programs (NRCS/FSA), practice data from EPA-319 funded projects (IDEM) and practice data from the Lake and River Enhancement program (IDNR).² It should be noted that data not related to the Region 5 model is also consolidated in this way, though it is instead published in reports online.³ These include tillage transect data and ICP financial reports. For utilizing the Region 5 model, practice data from ICP partners is collated into an Annual ICP Conservation Accomplishments datasheet, which included Best Management Practice (BMP) types, practice locations, measurements and other necessary attributes to enter into the Region 5 model. Practice data are then divided up by county and assigned to Division staff (4-6 assigned counties each).⁴ By distributing workload on a county basis, practice data can be run through the model by Division staff on a manageable timeline. All practices within a given calendar year are modeled with maps and reports generated in March of the following year.

As practice reduction estimates are completed in the model by Division staff, the nitrogen, phosphorus and sediment load reduction numbers are entered back into the Annual ICP Conservation Accomplishment datasheet.⁵ Once completed, the Accountability and Technology Program Manager lays over watershed or county layers in GIS

¹ All Division staff are trained to use the Region 5 Model with initial instruction of the Model as well as refresher training and Q&A. A training webinar has been completed for new and existing users of the model, which illustrates examples and explains the equations behind the model's function(s). The Division of Soil Conservation Team Leaders also developed a guidance document for the Region 5 Model, which serves to maintain consistency in the Model's use and to reduce and avoid human error where possible. The guidance document includes specific practice notes and comments, and includes a tab to assist with the "coverage factor" in the model.

²This data collection process is represented with the green boxes at the top of the ICP Workload Accountability Data flow chart.

³ Represented in the yellow rectangular boxes in the Workload Accountability flow chart. These are published on ISDA and ICP websites (small purple rectangle, lower left quadrant of the Workload Accountability flow chart).

⁴ Represented in the two small orange circles on the Workload Accountability flow chart.

⁵ Represented in the two small orange circles on the Workload Accountability flow chart.

with practice locations and their respective nutrient and sediment reductions. In this way, a cumulative picture of conservation impact is created at watershed scales.⁶ Value ranges are assigned for load reduction to illustrate the load reductions across the state by watershed at the HUC-8 level.

Conclusion:

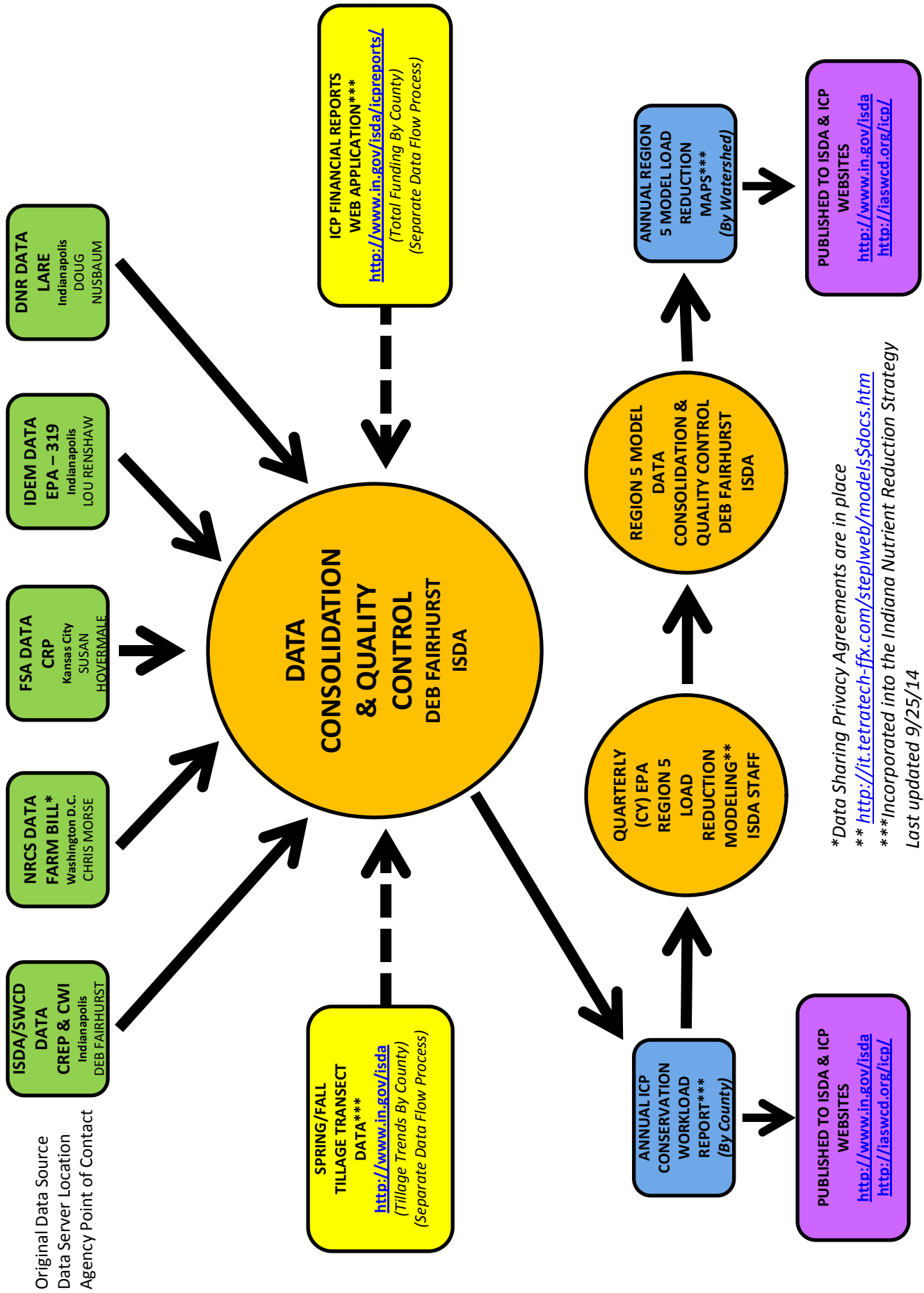
The primary value in partnership adoption of the EPA Region 5 model lies in benchmarking conservation impact and management of conservation resources across the state. As an additional result, the Indiana State Department of Agriculture has tied Key Performance Indicators and conservation goals to the Indiana State Office of Management and Budget. Use of the model for tracking impacts and goals has also had an internal benefit for ISDA; an atmosphere of healthy competition has arisen amongst field staff, who are eager to show positive water quality and sedimentation impacts in their respective watersheds. On a larger scale, The Indiana Conservation Partnership utilizes this model to set program/project goals, quantify impacts and estimate load reductions before a project ever begins.

Future plans include placing a dollar value on the amount of nitrogen and phosphorus kept on the land based on values provided by ongoing Water Quality Trading Projects and fertilizer costs. In addition, USEPA (Region 5) is currently updating the model to include fifteen more Best Management Practices (BMPs) as well as a water quantity component. In the future, estimates of water volumes kept on the landscape from various practices would help to assess and manage water quantity conservation efforts at county and watershed scales, both in times of drought and flooding. As these components of the model become available, ISDA and its partners intend to utilize them to their fullest possible potential within the partnership.

The Indiana Conservation Partnership plans to continue utilizing the Region 5 Model and methodology for future years to come. The partners encourage other organizations to share their data as well. With the goal to assemble similar reports in March of each year.

⁶ Represented in the small blue rectangle in the lower right quadrant of the Workload Accountability flow chart.

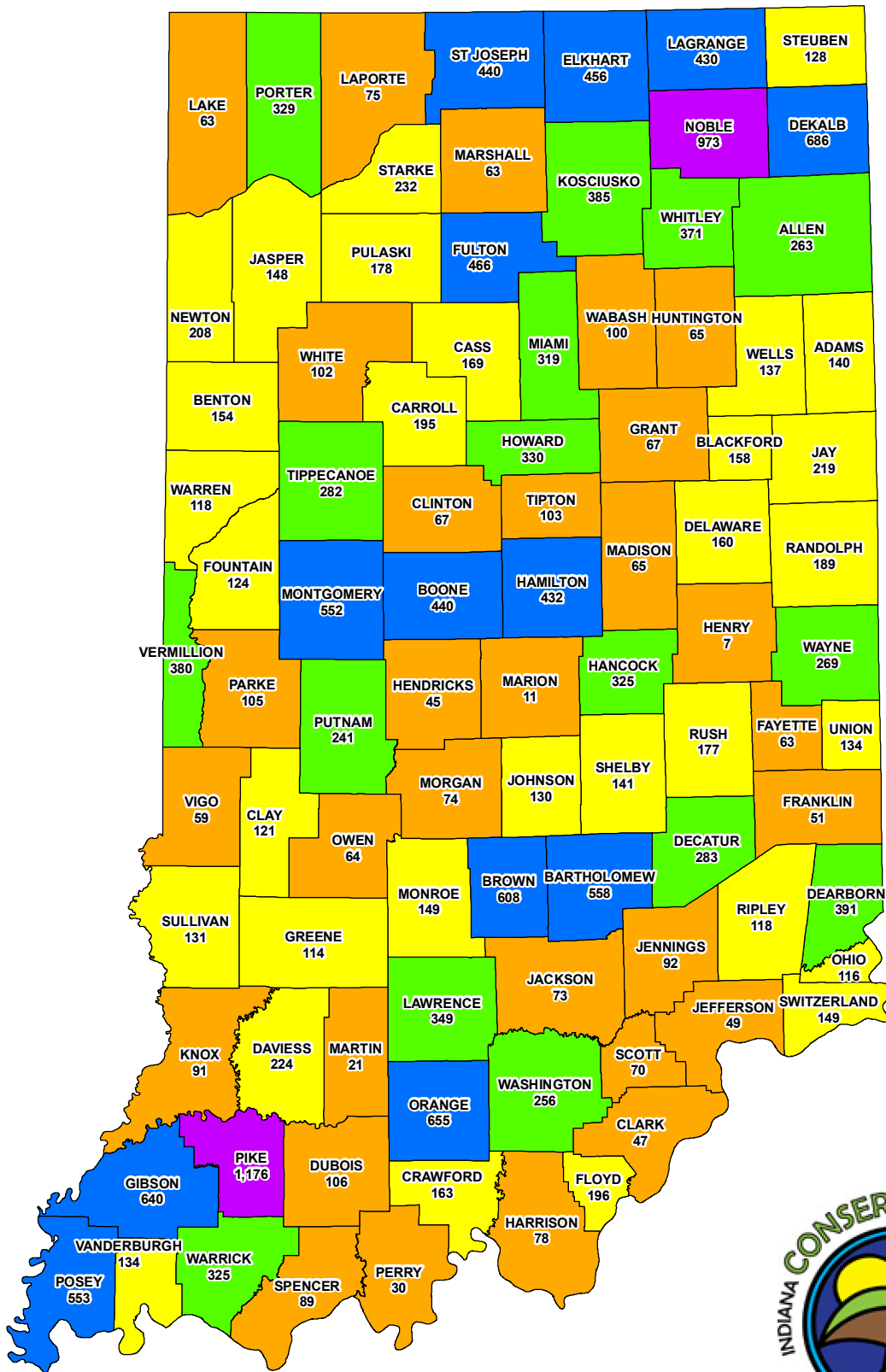
Indiana Conservation Partnership Annual (CY) Workload Accountability Data Flow



*Data Sharing Privacy Agreements are in place
 ** <http://it.tetrattech-ffx.com/step/web/models/docs.htm>
 *** Incorporated into the Indiana Nutrient Reduction Strategy
 Last updated 9/25/14

2014 Indiana Conservation Accomplishments

Implemented by Indiana Conservation Partnership



January 1 thru December 31, 2014
 Conservation Practices Completed - 21,012
 Conservation Practices Underway - 1,076

Data: Provided by Indiana State Department of Agriculture, Indiana Department of Environmental Management, Indiana Department of Natural Resources, Indiana's Soil and Water Conservations Districts and USDA Natural Resources Conservation Service.

2014 Conservation Accomplishments

Total Practices

- 7 - 106
- 114 - 232
- 241 - 391
- 430 - 686
- 973 - 1,176

COUNTY	AWEP	CREP	CRP	CSP	CWI	EQP	EWP	GRP	IDEM	LARE	OFN	OTHER	WHIP	WRP	TOTAL
ADAMS	0	0	25	0	0	100	0	0	0	0	9	0	0	6	140
ALLEN	0	0	0	41	0	167	0	0	0	0	24	0	31	0	263
BARTHOLOMEW	0	0	0	0	0	528	0	0	26	0	4	0	0	0	558
BENTON	0	0	16	0	10	123	0	0	0	0	5	0	0	0	154
BLACKFORD	0	0	0	0	0	156	0	0	0	0	2	0	0	0	158
BOONE	0	0	21	0	0	388	0	0	0	0	23	0	8	0	440
BROWN	0	0	0	0	0	601	0	0	0	0	0	0	7	0	608
CARROLL	0	0	0	0	0	177	0	0	0	0	14	3	1	0	195
CASS	0	0	3	6	0	149	0	0	0	0	9	0	2	0	169
CLARK	0	0	0	0	6	19	0	0	15	0	0	0	7	0	47
CLAY	0	0	51	0	0	33	0	0	0	0	9	0	28	0	121
CLINTON	0	0	0	0	0	16	0	0	4	0	25	0	22	0	67
CRAWFORD	0	0	0	0	11	152	0	0	0	0	0	0	0	0	163
DAVISS	0	1	0	0	0	214	0	0	0	0	6	0	3	0	224
DEARBORN	0	0	0	0	2	362	0	0	19	0	1	1	6	0	391
DECATUR	0	0	24	20	0	226	0	0	0	0	13	0	0	0	283
DEKALB	6	0	1	0	14	657	0	0	1	0	2	0	5	0	686
DELAWARE	0	0	0	0	0	137	0	0	0	0	21	0	2	0	160
DUBOIS	0	0	0	0	0	83	0	0	2	0	21	0	0	0	106
ELKHART	230	0	16	42	0	166	0	0	0	0	1	0	0	1	456
FAYETTE	0	0	4	0	0	58	0	0	0	0	0	0	1	0	63
FLOYD	0	0	0	0	0	196	0	0	0	0	0	0	0	0	196
FOUNTAIN	0	0	74	0	0	31	0	0	0	0	14	0	5	0	124
FRANKLIN	0	0	1	0	0	49	0	0	0	0	1	0	0	0	51
FULTON	0	0	4	0	45	284	0	0	0	0	22	111	0	0	466
GIBSON	0	0	0	0	112	505	0	0	2	0	16	0	5	0	640
GRANT	0	0	2	0	0	64	0	0	0	0	1	0	0	0	67
GREENE	0	0	2	0	0	93	0	0	1	0	4	0	14	0	114
HAMILTON	0	0	0	0	0	381	0	0	22	0	21	7	1	0	432
HANCOCK	0	0	0	18	0	304	0	0	3	0	0	0	0	0	325
HARRISON	0	0	4	0	0	74	0	0	0	0	0	0	0	0	78
HENDRICKS	0	0	0	0	0	34	0	0	0	0	8	0	3	0	45
HENRY	0	0	0	0	0	6	0	0	0	0	1	0	0	0	7
HOWARD	0	0	37	0	0	263	0	0	0	0	22	0	8	0	330
HUNTINGTON	0	5	0	14	0	46	0	0	0	0	0	0	0	0	65
JACKSON	0	3	0	0	4	57	0	0	0	0	0	0	9	0	73
JASPER	0	0	25	0	14	71	0	0	1	0	31	6	0	0	148
JAY	0	0	12	0	0	206	0	0	0	0	1	0	0	0	219
JEFFERSON	0	0	0	0	0	43	0	0	6	0	0	0	0	0	49
JENNINGS	0	0	4	0	8	48	0	0	0	0	6	25	1	0	92
JOHNSON	0	0	30	34	0	66	0	0	0	0	0	0	0	0	130
KNOX	0	0	14	0	0	34	0	0	0	0	10	0	33	0	91
KOSCIUSKO	107	11	0	0	0	53	0	0	10	30	22	0	152	0	385
LAGRANGE	366	0	0	0	0	41	0	0	13	0	0	0	10	0	430
LAKE	0	0	3	0	3	47	0	0	0	1	0	9	0	0	63
LAPORTE	12	0	11	0	0	40	0	0	1	0	3	0	2	6	75
LAWRENCE	0	1	0	0	9	258	0	0	0	0	9	0	72	0	349
MADISON	0	2	0	1	5	43	0	0	1	0	13	0	0	0	65
MARION	0	1	0	0	0	2	0	0	7	0	0	0	1	0	11
MARSHALL	0	0	0	0	0	24	0	0	0	2	0	37	0	0	63
MARTIN	0	0	0	0	0	19	0	0	0	0	0	0	2	0	21
MIAMI	0	0	56	0	20	224	0	0	4	0	1	3	11	0	319
MONROE	0	0	0	1	0	148	0	0	0	0	0	0	0	0	149
MONTGOMERY	0	0	226	0	0	278	0	0	0	0	3	0	45	0	552
MORGAN	0	2	24	0	6	42	0	0	0	0	0	0	0	0	74
NEWTON	0	0	0	0	20	186	0	0	1	0	0	1	0	0	208
NOBLE	305	0	158	92	0	333	0	0	3	30	44	0	8	0	973
OHIO	0	0	0	0	4	112	0	0	0	0	0	0	0	0	116
ORANGE	0	0	0	0	0	619	0	0	36	0	0	0	0	0	655
OWEN	0	0	21	0	0	42	0	0	0	0	1	0	0	0	64
PARKE	0	1	51	0	0	25	0	0	0	0	20	0	8	0	105
PERRY	0	0	0	0	2	9	0	0	0	0	0	0	19	0	30
PIKE	0	0	0	0	76	1060	0	0	0	0	5	0	35	0	1,176
PORTER	0	0	8	0	1	290	0	0	0	0	22	0	8	0	329

COUNTY	AWEP	CREP	CRP	CSP	CWI	EQIP	EWP	GRP	IDEM	LARE	OFN	OTHER	WHIP	WRP	TOTAL
POSEY	0	0	5	0	0	483	0	0	0	0	17	0	48	0	553
PULASKI	0	0	23	0	61	55	0	0	0	0	39	0	0	0	178
PUTNAM	0	0	146	0	0	49	0	0	0	0	44	2	0	0	241
RANDOLPH	0	0	90	0	0	91	0	0	0	0	8	0	0	0	189
RIPLEY	0	0	2	0	0	107	0	0	7	0	1	1	0	0	118
RUSH	0	0	0	164	0	13	0	0	0	0	0	0	0	0	177
SCOTT	0	0	0	0	5	64	0	0	0	0	0	0	1	0	70
SHELBY	0	0	0	0	0	139	0	0	1	0	1	0	0	0	141
SPENCER	0	0	10	0	1	46	0	0	0	0	2	0	30	0	89
ST JOSEPH	3	0	14	6	0	402	0	4	0	2	1	0	0	8	440
STARKE	0	2	0	0	0	223	0	0	0	0	0	0	0	7	232
STEUBEN	95	0	0	0	4	23	0	0	1	0	0	0	5	0	128
SULLIVAN	0	0	0	1	0	97	0	0	5	0	16	0	12	0	131
SWITZERLAND	0	0	0	0	1	109	0	0	17	0	0	16	6	0	149
TIPPECANOE	0	0	8	0	0	232	0	0	18	0	5	0	9	10	282
TIPTON	0	0	14	0	0	64	0	0	0	0	25	0	0	0	103
UNION	0	0	0	0	0	134	0	0	0	0	0	0	0	0	134
VANDERBURGH	0	0	0	0	22	103	0	0	0	0	9	0	0	0	134
VERMILLION	0	0	4	0	0	359	0	0	0	0	17	0	0	0	380
VIGO	0	6	3	0	0	28	0	0	0	0	6	0	6	10	59
WABASH	0	3	1	0	28	56	0	0	6	0	1	0	5	0	100
WARREN	0	0	16	0	0	84	0	0	0	0	7	0	4	7	118
WARRICK	0	0	0	0	20	282	0	0	0	0	14	0	9	0	325
WASHINGTON	0	2	76	0	22	122	1	0	25	0	0	0	8	0	256
WAYNE	0	0	11	0	0	253	0	0	0	0	0	0	5	0	269
WELLS	0	0	10	0	9	110	0	0	0	0	3	0	5	0	137
WHITE	0	0	0	0	0	101	0	0	0	0	1	0	0	0	102
WHITLEY	45	0	10	0	2	261	0	0	14	0	14	0	25	0	371
TOTAL	1,169	40	1,371	440	547	15,352	1	4	272	65	721	222	753	55	21,012

Indiana Conservation Partnership Initiatives – Program Descriptions

ACEP - The [Agricultural Conservation Easement Program](#) (ACEP) provides financial and technical assistance to help conserve agricultural lands and wetlands and their related benefits. Under the Agricultural Land Easements component, NRCS helps Indian tribes, state and local governments and non-governmental organizations protect working agricultural lands and limit non-agricultural uses of the land. Under the Wetlands Reserve Easements component, NRCS helps to restore, protect and enhance enrolled wetlands.

AWEP – [Agricultural Water Enhancement Program](#) - The USDA Agricultural Water Enhancement Program (AWEP) is a voluntary conservation initiative that provides financial and technical assistance to agricultural producers to implement agricultural water enhancement activities on agricultural land for the purposes of conserving surface and ground water and improving water quality.

CREP – [Conservation Reserve Enhancement Program](#) - The Conservation Reserve Enhancement Program (CREP) is a federal-state natural resources conservation program that addresses agricultural-related environmental concerns at the state and national level. CREP participants receive financial incentives to voluntarily enroll in the Conservation Reserve Program (CRP) in contracts of 14 to 15 years. Participants remove cropland from agricultural production and convert the land to native grasses, trees and other vegetation.

CRP - The [Conservation Reserve Program](#) is a land conservation program administered by the Farm Service Agency (FSA). In exchange for a yearly rental payment, farmers enrolled in the program agree to remove environmentally sensitive land from agricultural production and plant species that will improve environmental health and quality. Contracts for land enrolled in CRP are 10-15 years in length. The long-term goal of the program is to re-establish valuable land cover to help improve water quality, prevent soil erosion, and reduce loss of wildlife habitat.

CSP - [The Conservation Stewardship Program](#) is a voluntary program that encourages agricultural producers to improve conservation systems by improving, maintaining, and managing existing conservation activities and undertaking additional conservation activities. The Natural Resources Conservation Service administers this program and provides financial and technical assistance to eligible producers.

CWI – [Clean Water Indiana Program](#) - The Clean Water Indiana (CWI) Program was established to provide financial assistance to landowners and conservation groups. The financial assistance supports the implementation of conservation practices which will reduce nonpoint sources of water pollution through education, technical assistance, training, and cost sharing programs. The CWI fund is administered by the Division of Soil Conservation under the direction of the State Soil Conservation Board.

EQIP - [The Environmental Quality Incentives Program](#) is a voluntary conservation program that helps agricultural producers in a manner that promotes agricultural production and environmental quality as compatible goals. Through EQIP, farmers and ranchers receive financial and technical assistance to implement structural and management conservation practices that optimize environmental benefits on working agricultural land.

EWP – Through the [Emergency Watershed Protection](#) (EWP) program, the U.S. Department of Agriculture’s Natural Resources Conservation Service (NRCS) can help communities address watershed impairments that pose imminent threats to lives and property.

GRP - The goal of the [Grasslands Reserve Program](#) (GRP) is to prevent grazing and pasture land from being converted into cropland, used for urban development, or developed for other non-grazing uses. Participants in the program voluntarily limit future development of their grazing and pasture land, while still being able to use the land for livestock grazing and activities related to forage and seed production. Participation in GRP may also entail restrictions on activities during the nesting season of certain bird species that are in decline or protected under Federal or state law.

IDEM Section 205j- The federal [Clean Water Act Section 205\(j\)](#) provides funding for water quality management planning. Funds are to be used to determine the nature, extent and causes of point and nonpoint source pollution problems and to develop plans to resolve these problems.

IDEM Section 319- The 1987 amendments to the Clean Water Act (CWA) established the [Section 319 Nonpoint Source Management Program](#). Section 319 addresses the need for greater federal leadership to help focus state and local nonpoint source efforts. Under Section 319, states, territories and tribes receive grant money that supports a wide variety of activities including technical assistance, financial assistance, education, training, technology transfer, demonstration projects and monitoring to assess the success of specific nonpoint source implementation projects.

LARE – [Lake and River Enhancement Program](#) - The goal of the Division of Fish and Wildlife's Lake and River Enhancement Section is to protect and enhance aquatic habitat for fish and wildlife, to insure the continued viability of Indiana's publicly accessible lakes and streams for multiple uses, including recreational opportunities. This is accomplished through measures that reduce non-point sediment and nutrient pollution of surface waters to a level that meets or surpasses state water quality standards.

OFN - The [Indiana On-Farm Network](#)[®] is a group of crop producers interested in economics, stewardship, and reducing their environmental footprint. The goal of the Indiana On-Farm Network[®] is to advance two critical components to driving improved farm-level performance:

- 1) access to and education on the use of effective, affordable tools and strategies to assess and verify on-farm environmental and economic performance and
- 2) coordination of data collection, analysis, and feedback to farmers using these tools at the individual farm level and in aggregate across multiple farms in a geographic region.

WHIP - The [Wildlife Habitat Incentive Program](#) is a voluntary program for people who want to develop and improve wildlife habitat primarily on private land. Through WHIP USDA's Natural Resources Conservation Service provides both technical assistance and up to 75 percent cost-share assistance to establish and improve fish and wildlife habitat. WHIP agreements between NRCS and the participant generally last from 5 to 10 years from the date the agreement is signed.

WRP - The [Wetlands Reserve Program](#) is the Nation's premier wetlands restoration program. It is a voluntary program that offers landowners the means and the opportunity to protect, restore, and enhance wetlands on their property. The USDA Natural Resources Conservation Service (NRCS) manages the program as well as provides technical and financial support to help landowners that participate in WRP.

Indiana Conservation Partnership Websites:

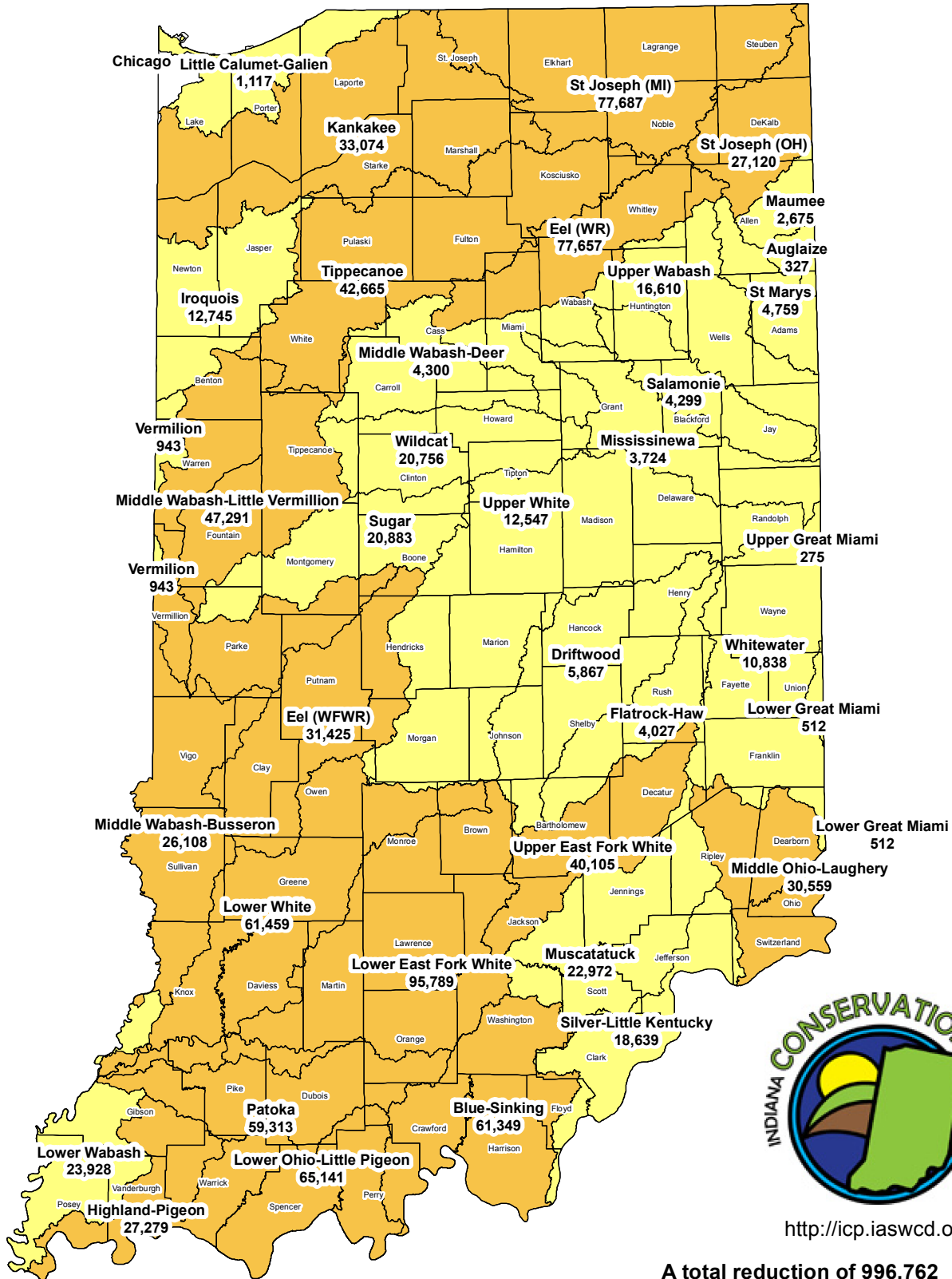
[Indiana Conservation Partnership](http://icp.iaswcd.org/) (<http://icp.iaswcd.org/>)

The Partnership is comprised of eight Indiana agencies and organizations who share a common goal of promoting conservation. To that end, the mission of the Indiana Conservation Partnership is to provide technical, financial and educational assistance needed to implement economically and environmentally compatible land and water stewardship decisions, practices and technologies.

[Indiana Conservation Partnership Reports](http://www.in.gov/isda/icpreports) (<http://www.in.gov/isda/icpreports>)

Here you can find statewide and county level information on conservation investments made with local, state and federal funding. You can view funding levels, funding specific programs and counties, and county level success stories for Soil and Water Conservation Districts. The statewide information page and each county page can be printed as a pdf document.




2014 Nutrient Load Reductions Sediment



<http://icp.iaswcd.org/>

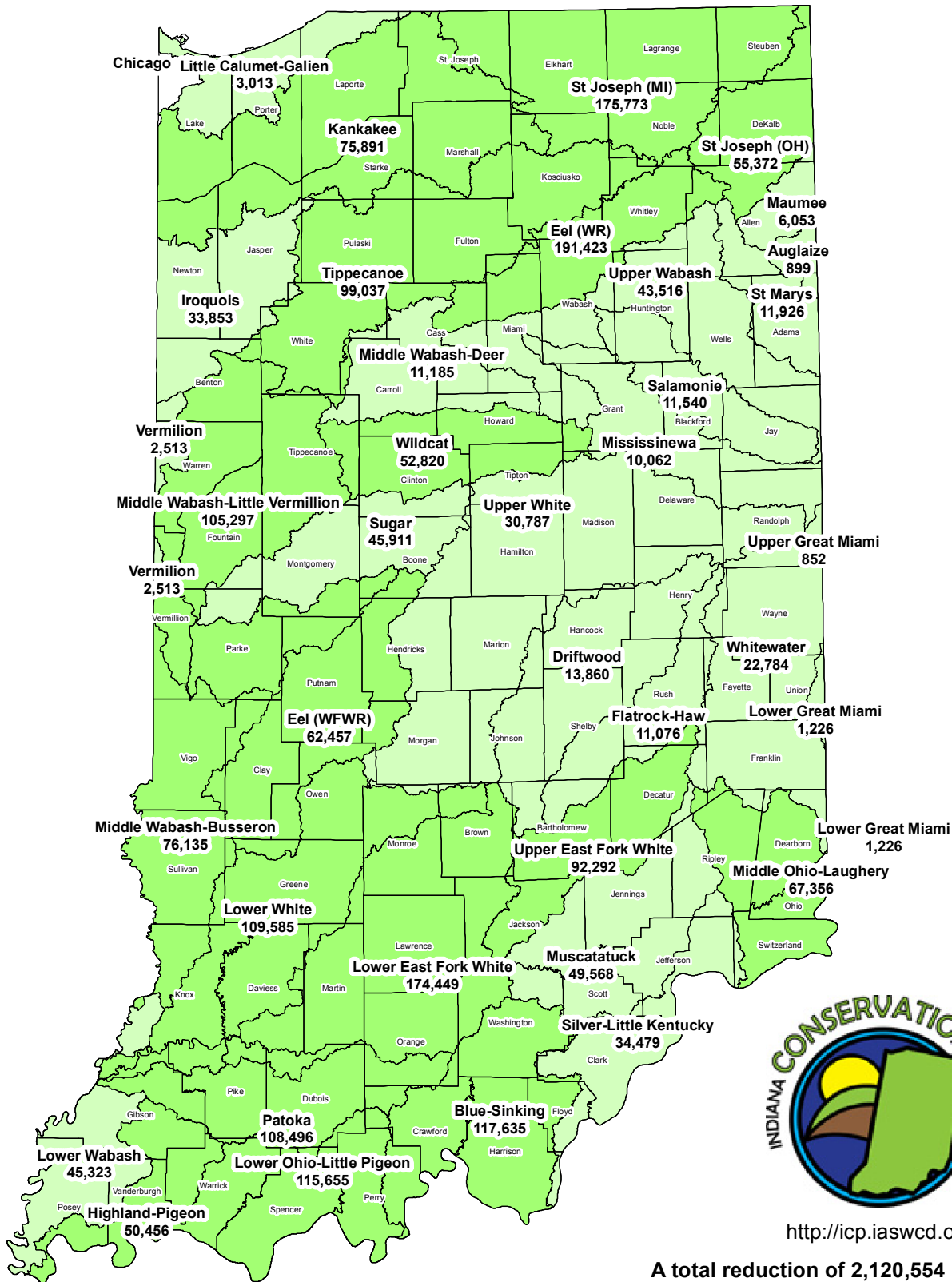
A total reduction of 996,762 tons of sediment statewide.

Sediment Reductions (tons/year)

-  275 - 25,000
-  25,001 - 100,000
-  No Reported Reductions

Based on Region 5 Model analyses conducted on 11,365 conservation practices installed by the Indiana Conservation Partnership January 2014 thru December 2014.




2014 Nutrient Load Reductions Nitrogen



<http://icp.iaswcd.org/>

A total reduction of 2,120,554 pounds of nitrogen statewide.

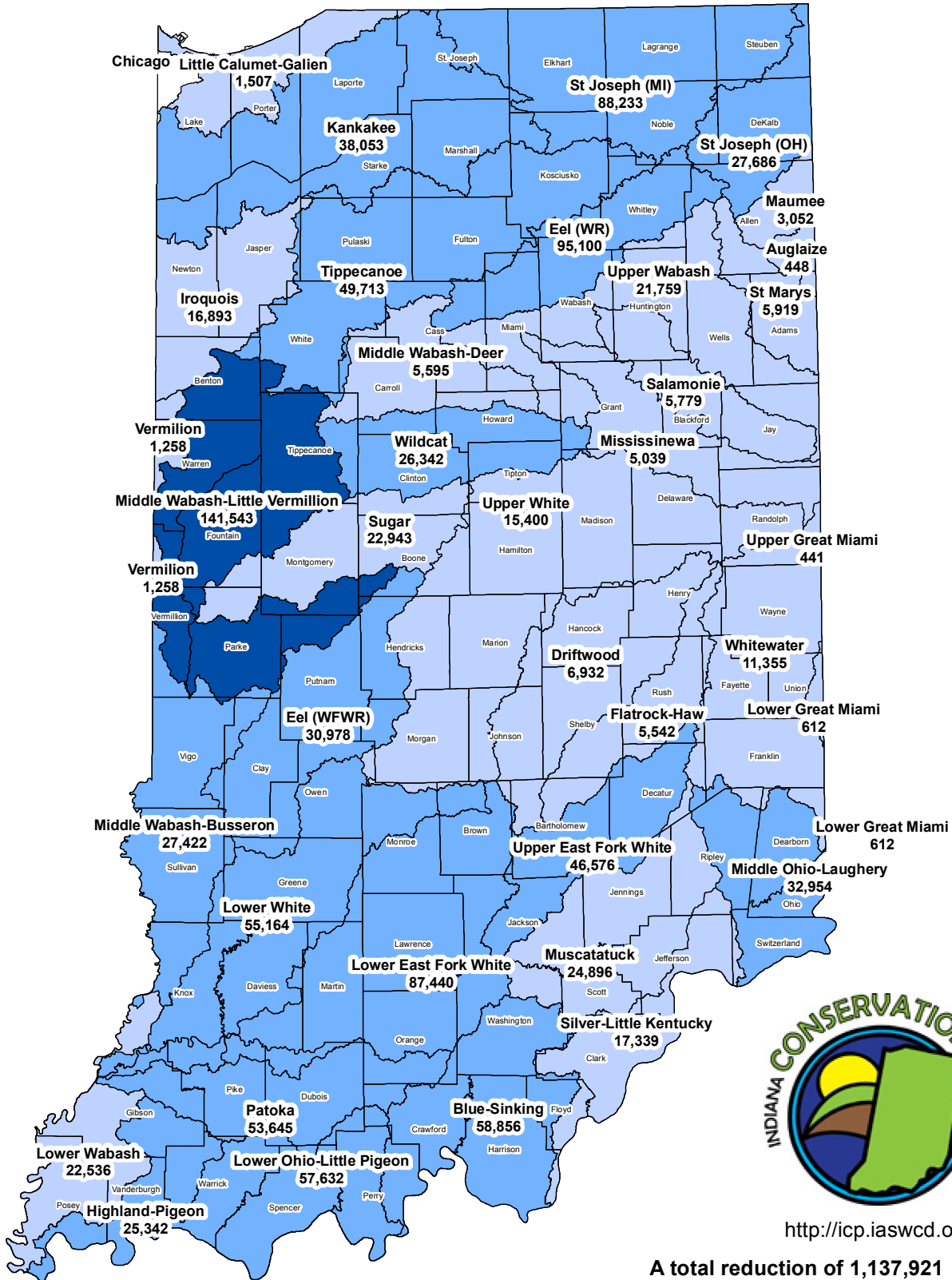
Nitrogen Reduction (lbs./year)

-  1 - 50,000
-  50,001 - 200,000
-  No Reported Reductions

Based on Region 5 Model analyses conducted on 11,365 conservation practices installed by the Indiana Conservation Partnership January 2014 thru December 2014.

Reductions in dissolved nutrients, such as dissolved reactive phosphorus (DRP) and nitrate (NO₃), are not accounted for by the Region 5 Model.





2014 Nutrient Load Reductions Phosphorus



<http://icp.iaswcd.org/>

A total reduction of 1,137,921 pounds of phosphorus statewide.

Phosphorus Reduction (lbs./year)

-  441 - 25,000
-  25,001 - 100,000
-  100,001 - 175,000
-  No Reported Reductions

Based on Region 5 Model analyses conducted on 11,365 conservation practices installed by the Indiana Conservation Partnership January 2014 thru December 2014.

Reductions in dissolved nutrients, such as dissolved reactive phosphorus (DRP) and nitrate (NO₃), are not accounted for by the Region 5 Model.

ISDA-District Support Specialists Team Activity Report (March 1, 2015 - May 1, 2015)

Major Activities or Events:

- Assistance with updating Business Plans and or Annual Plans of Work: Floyd, Washington, Morgan, Spencer Wells, Wabash
- Four regional meetings took place throughout March. A total of 64 Districts were represented with 100 Supervisors and 77 District staff in attendance.
- Nathan Stoelting completed the MBTI training and is now certified in MBTI facilitation.
- Leah Harmon developed a webinar for Districts regarding how to fill out claim vouchers for CWI grant agreements. In addition, CWI match grant agreements have been distributed and collected. Deadline was May 4th to return those agreements.
- 2015 Spring Transect documents have been distributed to ICP employees.

Ongoing Key Support:

- DSSs have attended SWCD Board meetings and assisted with various topics in the following counties: Posey, Spencer, Hamilton, Warrick, Marion, Wabash, Adams, Gibson, Wells, Lawrence, Benton, Morgan, Hendricks, Clark, Vanderburgh, Harrison, Allen, Johnson, Dubois, Morgan, Perry, White, Jackson, Starke, Greene, Whitley and Floyd.
- SWCD Staff visits: DSSs visited staff and provided training, assistance with various projects or tasks, and provided guidance in the following counties: Marion, Delaware, Pike, Jay, Miami, DeKalb, Lawrence, Vermillion, Monroe, Marshall, Daviess, Sullivan and Monroe.
- Supervisor visits: Jennifer Thum visited with Adams County and Leah assisted supervisors and staff in Marion Co
- DSSs presented at or attended events, field days, workshops, or Partnership meetings where they were also able to interact with the following Districts: Jackson, Franklin, LaPorte, Porter, Adams, Allen, DeKalb, LaGrange, St. Joseph, Steuben, Well, and Pike.
- CWI Grant audits: Posey, Warrick, DeKalb, Miami

Committees and Advisory Roles: DSSs have been involved serving on committees and accomplishing related tasks.

- Jennifer: River Summit, RCPP, Tri-State Conservation Expo, IASWCD Annual Conference planning committee
- Geneva: Spring Transect
- Leah: SSCB duties, CWI Grants
- Nathan: Pathway to Water Quality
- Laura: Regional Soil Health Workshop, ICP Training and Certification Program

Other Key Items:

- Planning is underway for the September and December 2015 Leadership Institutes
- Planning is underway with IASWCD for 2016 Annual Conference

Highlights from 2015 Annual Meetings

- Lake County: Lake Co's annual meeting had 234 attendees and a representative from Senator Donnelly and other representatives were in attendance. Lake Co gushed over Ted being there, a FFA chapter and the board both took their picture with him, and I think Ted was very impressed by the turnout of those interested in the Soil and Water Conservation District despite their proximity to Chicago and their urban population.
- Harrison County: Mike Johnson and Leah Harmon attended the Harrison County SWCD annual meeting. This event is always well attended, filling a gymnasium and having a waiting list for tickets. This year, the meeting had around 330 people in attendance. The event attracts residents of all ages, from coloring contest winners in

kindergarten to the experienced master farmer award recipient. This year's speaker was a conservation officer discussing safety. Many county residents attend the meeting after receiving assistance from the county's extensive cost-share program which is funded through riverboat dollars.

Upcoming Event:

- SWCD Chair/ViceChair workshop: August 25th at Hendricks County Fairgrounds.

ICP Training and Certification Program

Two forestry related webinars were hosted in April for ICP employees. Lenny Farlee, Extension Forester with Purdue University's Department of Forestry and Natural Resources, instructed the two courses. Participants were encouraged to utilize the books the SSCB purchased for each SWCD office in 2014, Sally Weeks' "Shrubs and Woody Vines of Indiana and the Midwest: Identification, Wildlife Values, and Landscaping Use" and "Native Trees of the Midwest". Approximately 57 groups or individuals logged onto attendees the webinars, including employees from SWCDs, NRCS, ISDA, IDNR, and Purdue. They've also been posted for further viewing and training. The archived tree ID webinar can be viewed at: <http://www.webinar.in.gov/p57ije4jdk4/> and the shrub ID webinar at: <http://www.webinar.in.gov/p80w5z9c9zh/>. This summer, there will be hands-on forestry trainings for ICP employees and the books will be utilized at that point too. Thank you to the SSCB for these invaluable tools!

**Note: due to the large amount of data summarized, errors or omissions may exist.*



**Indiana Association of
Soil and Water
Conservation Districts**

Protecting and enhancing Indiana's soil
and water resources for all Hoosiers



IASWCD

225 S. East Street
Suite 740
Indianapolis, IN 46202

Phone: 317.692.7325
Fax: 317.423.0756
Web: www.iaswcd.org

PRESIDENT:

Mike Starkey
Hendricks County

VICE PRESIDENT:

Jamie Scott
Kosciusko County

TREASURER:

Paula Baldwin
Marion County

SECRETARY:

Roger Wenning
Decatur County

EXECUTIVE DIRECTOR:

Jennifer Boyle Warner
Jennifer-boyle@iaswcd.org

To: State Soil Conservation Board
From: Mike Starkey, President, IASWCD
Date: Tuesday, May 12, 2015

Conservation Cropping Systems Initiative (CCSI)

- Kevin Allison hired by agreement between Marion County SWCD/IASWCD/NRCS as an urban soil health specialist. Kevin worked previously for the Daviess County SWCD.
- Ashley Hammac hired as the Conservation Cropping Systems Agronomist for CCSI; stationed at Purdue.
- A second Conservation Innovation Grant has been submitted for continuation of the soil health measurements.

Pathway to Water Quality

- DeeDee Sigler is again serving as coordinator for PWQ from April 1-Sept. 30.
- Ball State University immersion study program has presented their ideas for upgrades to signage, etc. for PWQ. Items from their plan will be added as funds are available.
- A 319 grant is still in the works to help fund a coordinator and other needed items for 2016/2017.
- Updates on PWQ provided at the spring regional trainings.

Legislative

- Successful in maintaining the Clean Water Indiana general fund appropriation at \$1 million/year. The Governor's budget had reduced it to \$970,000. We were able to get the funding restored in the Senate version. All other dedicated funds are included in the budget.
- Kept members informed during the session through a weekly Legislative update email.

Other

- Four IASWCD Board members – Jamie Scott, Paula Baldwin, Roger Wenning, and Kerry Ames (along with Jane Hardisty) visited our Congressional offices in Washington, DC in March.
- Represented soil and water conservation districts at Ag Day at the Statehouse and Conservation Day at the Statehouse, both in March.
- 2016 SWCD Annual Conference – discussion on SSCB mtg.