

MINUTES
STATE SOIL CONSERVATION BOARD MEETING
January 7, 2013 8:30 am
Indianapolis Downtown Marriott
Indianapolis, IN

Members in Attendance:

Warren Baird
Larry Clemens
Bob Eddleman
Bill Mann
Nola Gentry
Scott Ham

Members Not In Attendance:

Brett Glick

Others in Attendance:

Bob Hettmansperger, Wabash SWCD
Jim Droege, IASWCD
Pat Larr, Scott SWCD
Rick Parson, Tippecanoe SWCD
Nick Alles, ISDA
Rita Sharr
Sharon Watson, White SWCD
Lyle Burtsfield, Elkhart SWCD
Ray McCormick, IASWCD
Scheryl Vaughn, Boone SWCD
Les Zimmerman, Vermillion SWCD
Don Lode, LaPorte SWCD
Meg Leader, Vermillion SWCD
Tom Crowe, Allen SWCD
Cress Hizer, INAg

Others in Attendance Cont:

Jordan Seger, ISDA
Deb Fairhurst, ISDA
Jennifer Pinkston ISDA
Jim Lake ISDA
Tara Henry, ISDA
Geneva Rawlins, ISDA
Nathan Stoelting ISDA
Roger Kult, NRCS
Susan Hovermale, FSA
Mike Starkey, Hendricks SWCD
Kenny Cain, IASWCD
Harold Thompson, ICP
Jennifer Boyle-Warner, IASWCD
Carol Love, LaPorte SWCD
Tony Ekovich, LaPorte SWCD
Sherm Bryant
Lois Mann, Fulton SWCD
Douglas Joluste, Morgan SWCD
Jim Hess, Elkhart SWCD
Jamie Scott, IASWCD
Deb Lane, Warren SWCD
Ray Chattin, Knox SWCD
Steve Howell, IDEM
Larry Strole, Newton SWCD
Dan Wire, Allen SWCD
Deb Jimison, ISDA

- I. 8:30 AM: Call to Order**
- II. Draft Minutes of December 2012**

Change December minutes to reflect correct number of CREP acres (8,067). Bob moved to approve minutes with correction noted. Nola seconded. Motion passed.
- III. ISDA Reports and Accomplishments (See Attachments)**
 - a. Division Operations-Jennifer Pinkston**

Jennifer reported on how the budget reduction had affected division staff by reducing training funds and a reduction of the division fleet.
 - b. District Support-Jim Lake**

During 2012, DSSs facilitated sessions at the IASWCD annual conference, assisted with the five March training sessions, and during the fall, participated in the joint meetings around the state. DSSs have been working with district staff and supervisors to review and reflect on the Conservation Beyond 2016 task force report. Two Leadership Institute workshops were held in 2012. In total, 72 districts have participated in LI activities since 2006. Four participants completed the program this in 2012.
 - c. Technical Assistance, Technology and Accountability-Deb Fairhurst**

As of January 1, the Division of Soil Conservation employs four Resource Specialist Team Leaders, 17 Resource Specialists, and three IDEM 319 funded Resource Specialists. The combined 24 technical staff assisted over 200 farmers implement conservation practices in 2012.

SharePoint usage increased dramatically in 2012. Currently, over 250 division and ICP staff are using SharePoint tracking. Clean Water Indiana grants are using SharePoint for reporting purposes. The District Support Specialists recently began using SharePoint to track their activities. All technical staff and SWCD staff are using the EPA Region 5 model to track nutrient load reduction. Deb used the information in the conservation practice database to create maps of load reductions. (See attachments)

d. Programs and Initiatives-Jordan Seger and Logan Garner

Jordan and the OFN group will have finish up grower meetings in the next few weeks. After all the grower meetings have been completed, the results will be posted online. Scott Ham asked Jordan if there were any surprises because of the drought conditions. Jordan commented that stalk nitrate concentrations were much lower than anticipated. The theory is that the lack of precipitation could have prevented nitrogen from moving up in the stalk, however no one is sure. Jordan reported one additional group will be added to the OFN in 2013. The current funding source is for three years, with Indiana Corn and Soybean Alliance as the major partner. In the future, the program may expand research to other nutrients and testing, but the current structure focuses on unpaid help and using the grant funding for program testing and data analysis. Logan reported 835 acres were installed in CREP during 2012. The top practice was bottomland timber establishment. (See attachments for more details) The CREP steering committee has been reestablished and is now meeting regularly.

IV. SSCB Report

a. Annual Report and Accomplishments-Larry Clemens

Larry noted the SSCB awarded nine Clean Water Indiana multi-district grants this year. In addition, the board has made up to \$475 each for staff and supervisor training reimbursements available, to a maximum of \$66,000 for the entire state.

b. Task Force Discussion-Larry Clemens

Over an eight month period, the Conservation Beyond 2016 task force compiled, reviewed and analyzed data, trends and outlooks to develop the Conservation Beyond 2016 report. After the report was released, the SSCB gave presentations on the report and took a five month period for comments and suggestions. In December, Larry attended the IASWCD board meeting and discussed possible next steps. The board agreed the action steps need to come from the local level. After annual conference, Larry plans to meet with Jennifer Boyle Warner to develop a small group to develop a plan. Larry also noted 2014 CWI funds should be used for this project.

V. Conservation Partner Reports

a. IASWCD Report-Ray McCormick

Ray noted that during discussions with Tom Davenport from EPA, Indiana was complimented on our non-traditional partnerships relating to water quality. Ray called attention to the natural resource sustainability task force report, available at <http://www.in.gov/legislative/igareports/agency/reports/ISNRTF01.pdf>. The report calls for an increase in Clean Water Indiana funding to support an additional eight technical staff to support the CCSI initiative and increasing the annual financial SWCD match from \$10,000 to \$20,000.

b. IDEM Report-Steve Howell (See Attachments)

Steve noted the great conservation working going on in Indiana, highlighting the over 10,000 acres of cover crops funded with 319 grants. Water quality monitoring projects experienced problems in 2012 due to creeks drying up, but anticipate getting back to data in 2013.

c. DNR Report-No Report

d. Purdue Report-No Report

e. FSA Report-Susan Hovermale (See Attachments)

FSA continues to work on conservation compliance issues. Susan reported FSA is working on several wetland compliance issues. FSA worked to outline two new SAFE areas for ringneck pheasant and American woodcock.

f. NRCS Report-Roger Kult (See Attachments)

Roger reported the announcement of over \$26M available funds for EQIP. Jane is still in Washington. In January, Jane was asked to stay in Washington for a 120 day detail as Acting Associate Chief for Operations. In her absence, Roger is serving as Acting Stat Conservationist and Susan Meadows is serving as Acting Assistant State Conservationist for Operations.

- VI. Public Comment**
- VII. Next Meeting: TBA**
- VIII. Adjourn**

Minutes Prepared By: Jennifer Pinkston

Approved By:

DRAFT

AGENDA
STATE SOIL CONSERVATION BOARD MEETING

Monday, January 7, 2013
The Marriott Downtown, Room 7
350 W Maryland Street
Indianapolis, Indiana

- I. 8:30 AM: Call to Order**
- II. Approve Minutes of December 2012**
- III. ISDA Reports and Accomplishments**
 - a. Division Operations-Jennifer Pinkston
 - b. District Support-Jim Lake
 - c. Technical Assistance-Deb Fairhurst
 - d. Technology and Accountability-Deb Fairhurst
 - e. Programs and Initiatives
 - i. On-Farm Network[®]-Jordan Seger
 - ii. CCSI-Jordan Seger
 - iii. CREP-Logan Garner
 - iv. Nutrient Reduction Strategy-Logan Garner
 - f. Partnerships
 - i. WLEB-Jim Lake
 - ii. Great Lakes Sediment Control Program-Jim Lake
 - iii. Water Quality Trading Program-Tara Henry
 - iv. Red Gold-Jordan Seger
- IV. SSCB Report**
 - a. Annual Report and Accomplishments-Larry Clemens
 - b. Task Force Discussion-Larry Clemens
- V. Conservation Partner Reports**
 - a. IASWCD Report
 - b. IDEM Report
 - c. DNR Report
 - d. Purdue Report
 - e. FSA Report
 - f. NRCS Report
- VI. Public Comment**
- VII. Next Meeting: TBA**
- VIII. Adjourn**

PLEASE NOTE

This agenda is in DRAFT FORM. Open Door Law does not prohibit the public agency from changing or adding to its agenda during the meeting.

INDIANA STATE DEPARTMENT OF AGRICULTURE

DIVISION OF SOIL CONSERVATION

2012 ACCOMPLISHMENTS REPORT

DIVISION OPERATIONS

Staffing

In 2012, the Division of Soil Conservation (DSC) added technical and support positions to key areas of the state. In May, the division added a fifth District Support Specialist (DSS). Geneva Rawlins, who formerly served as a Resource Specialist (RS) in Johnson County, now serves as a DSS in the northwest. In 2011, ISDA was awarded a Section 319 grant from IDEM. The grant allowed the division to hire three additional RSs, each assigned to a high priority watershed-Tippecanoe, Eel, and Upper Wabash. The grant will fund these positions for three years. The Western Lake Erie Basin (WLEB) partnership agreement with NRCS was extended for an additional year. This agreement partially funds two RSs in the WLEB area.

In September 2012, the Division honored nine Resource Specialists for their dedication to Indiana's soil conservation and water quality. Eight Resource Specialists were recognized for 25 years of service and one for 35 years of service.

Budget

Due to cigarette tax revenue shortfalls for state fiscal year 2013, the Division of Soil Conservation and the Clean Water Indiana funds were forced to further reduce spending by nearly \$350,000. In order to meet these new budgetary restrictions, CWI grants were reduced and discretionary spending-including training, travel, equipment and supplies- from the division's operating fund was nearly eliminated. In an effort to be more efficient with limited resources, five vehicles were also removed from the division's fleet. Fleet usage will continue to be monitored, and vehicle assignments may continue to be adjusted as needed.

Effectiveness and Efficiencies

To further define strategic goals and focused efforts, each section of the division (District Support, State Soil Conservation Board, Technical Assistance, Marketing/Communications, Technology & Accountability, and Programs & Initiatives) developed and/or updated their annual plan of work. The updated plans of work identify specific areas of focus and measurable goals. The objectives included in the plans of work have been incorporated into performance evaluations.

STATE SOIL CONSERVATION BOARD

Conservation Beyond 2016 task force

The State Soil Conservation Board, at the August 2011 board meeting, discussed the current economic situation. Soil and Water Conservation Districts (SWCDs) are facing due to local and state budget cuts. The board discussed several factors that are impacting local SWCDs at this time including: technical capacity for program delivery, budget impacts at federal, state and local levels, USDA rental costs, CWI grant program focused on multi county projects, CWI funding declining while operational costs go up for SWCD's, and overall delivery of high quality conservation in a changing world. In a proactive effort, the board formed a task force to research and recommend conservation delivery options for the SSCB, along with the Indiana Conservation Partnership, to consider as we move into the future. The task force met on December 11 2011, January 23, February 27, March 26, April 30, May 29, and June 25, 2012. It concluded with a meeting by conference call on July 23 to finalize discussion of the report, prior to presenting it to the SSCB in August. Ray Ledgerwood, of Board Works by Ledgerwood, helped plan and facilitate the working sessions of the task force. In August 2012, the task force delivered their final report to the SSCB. Included in the report are three options for future conservation delivery: Option A-Collaboration on Sharing

Resources, Option B-Indiana Conservation Partnership (ICP) Collaboration on Watershed Basis Option, and Option C-Conservation Districts & ICP Consolidated on a Watershed or Multi-County Basis. The full report can be found at http://www.in.gov/isda/files/Conservation_Beyond_2016_report.2.pdf. The SSCB is currently gathering feedback from the report.

Clean Water Indiana Grants

In July, the SSCB voted to offer a grant program similar to the 2012 program that requires multidistrict/watershed, multi-year projects. In October, the board awarded nine CWI grants totaling \$529,676. The grants will begin on January 1, 2013 and will be three years in length. The maximum funding per grant is \$70,000. In addition, the SSCB is offering training reimbursement for SWCD staff and supervisors. Each district can apply for up to \$475 for supervisor reimbursement. The remaining funds will be divided equally for staff training reimbursements, with a maximum of \$475. Full details of the 2013 CWI Grants can be found at http://www.in.gov/isda/files/2013_grant_proposal.pdf.

DISTRICT SUPPORT

Professional Training and District Capacity Building

The District Support Specialist Team organized and facilitated two sessions at the Indiana Association of Soil and Water Conservation Districts (IASWCD) Annual Conference held in January. One session, designed for district supervisors, focused on personnel management. Topics included conducting formal employee evaluations, documenting performance and providing constructive and positive feedback on job performance. The other session, for both supervisors and staff, consisted of a panel of speakers sharing their district's success in obtaining and leveraging new funding opportunities to accelerate conservation work.

In March 2012, five regional training workshops were held statewide for Soil and Water Conservation District Supervisors and Staff. Key topics included soil health, new supervisor and staff orientation, new program/funding opportunities and tracking conservation accomplishments on SharePoint. Sponsored by the Indiana Conservation Partnership (ICP), the workshops drew 211 SWCD supervisors and staff plus other Partnership staff. The DSSs assisted in program planning, local arrangements, workshop facilitation and conducting the training for new supervisors and staff.

Seven fall region meetings for SWCD supervisors and staff were held throughout the state. A key agenda item was a presentation highlighting the State Soil Conservation Board's Task Force Report titled "Conservation Beyond 2016" followed by discussion and input from the attendees. Other topics included a CWI grants update, technical assistance provided by ISDA Resource Specialists, expansion of the Conservation Cropping Systems Initiative, NRCS Update and IASWCD's legislative agenda for next state legislative session. The meetings were sponsored by the IASWCD however the DSS played a major role in planning and conducting the meetings.

Two Leadership Institute workshops were held in 2012, with a total of 34 participants. The workshops were Leadership in Communications and Impacting Community. 99% of feedback respondents said the workshops were worth their time. Seventy-seven people statewide have now completed all four components this leadership program. This includes 41 supervisors/associates, 25 staff, nine partners (including DSSs), and two spouses. Three workshops are planned for 2013.

In December, ISDA and the Indiana State Board of Accounts hosted a free webinar for SWCDs to review upcoming financial and personnel reporting requirements. This was the first time ISDA utilized the webinar format for SWCD training. This method was selected due to the material content, the increasing availability of modern technology, and an increasing demand for efficiency from all agencies.

The ICP Training and Certification Program strives to improve efficiency in training amongst all ICP technical employees, resulting in a more highly skilled workforce and seamless delivery to customers. Two ISDA employees serve on the team that helps steer the initiative. In February, a 205j grant from the Indiana Department of Environmental Management was secured to further the initiative. A program coordinator and part-time assistant

were hired. Additionally, ICP trainings including advanced cover crops, soil health, and RUSLE2 trainings were conducted statewide.

Educational and Financial Assistance

The Pathway to Water Quality Education/Demonstration Area was once again a very popular stop for visitors attending the 2012 Indiana State Fair. An average of a little over 2,000 visitors passed through Pathway each day of the fair. They were greeted by 20 volunteers who worked 3-4 hours shifts in ten focus areas. New to the exhibit this year was an area showcasing cover crops and information on the benefits of using them in a crop rotation. In the youth education area more puzzles and games were added to reach the younger visitors along as well as a new storage shed to store them in. A DSS served as Co-Chair of the Pathway to Water Quality Exhibit Committee which required a considerable amount of his time during the summer to help with watering the exhibit area to keep the plants, trees and other living species alive during the severe drought as well as during the fair.

In response to the drought, ISDA made emergency cover crop seeding cost share assistance available for landowners located in the D4 (exceptional drought) classified areas as of August 14, 2012. Approximately 22 landowners/operators in 14 counties utilized the \$50,000 in funds available. The two DSS’s that cover the conservation districts with land in the D4 area worked closely with their respective districts. Posey County SWCD administered the program on behalf of ISDA to make the financial assistance program a success.

TECHNICAL ASSISTANCE

The Division of Soil Conservation employs personnel to directly assist landowners with the planning and implementation of conservation practices addressing specific soil and water resource concerns. Division field staff includes four Team Leaders and 17 RSs. The Division also employs three RSs, funded by an EPA Section 319 Grant, to cover three high-priority watersheds including the Tippecanoe, Upper Eel, and Upper Wabash, as well as two Resource Specialists, funded by a NRCS Contribution Agreement, to assist landowners in the Western Lake Erie Basin.

Resource Specialists work in regional Conservation Implementation Teams (CIT) alongside personnel representing the Natural Resources Conservation Service (NRCS) and Soil and Water Conservation Districts (SWCD). They assist with planning, survey, design, supervision of installation, and maintenance of conservation practices. The common practices these professionals install include, but are not limited to, filter strips, grassed waterways, forested and grassed buffers, water and sediment control basins, wetland restorations, and livestock watering systems. The table below reflects the conservation workload accomplished by these dedicated individuals.

DSC Conservation Workload – January 1, 2012 – November 21, 2012

Action	Currently Reported
Individuals Assisted	200
Completed Practices	294
Practice Acres	2,924
Practice Feet	253,220 (48 mi.)
Field Acres	12,997
Total Watersheds (HUC8) Impacted	29

PROGRAMS AND INITIATIVES

Conservation Cropping Systems Initiative (CCSI)

In 2012, ISDA-DSC and State Soil Conservation Board, as part of the Indiana Conservation Partnership, continued support of the Conservation Cropping Systems Initiative. The Indiana Conservation Cropping Systems Initiative (CCSI) promotes a systematic approach to production agriculture focusing on continuous no-till/strip-till, cover crops, precision farming, and nutrient and pest management. The end result of this systematic approach is improved soil quality, water quality and profitability on Indiana cropland. CCSI is a resource for the 92 Indiana Soil and Water Conservation Districts to carry out their conservation cropping systems goals and objectives. CCSI was launched in September 2009. In the first three years of CCSI the program completed 207 technical presentations to 12,103 people, assisted SWCD's with organizing 186 events in most of Indiana's 92 counties, and provided direct technical assistance to 232 farmers. The CCSI program has received widespread media attention and has drawn inquiries from several states and two Canadian provinces as well as private sector businesses. In 2012 CCSI assisted ICP partners in securing a \$1.7 Million, 3-year NRCS Conservation Innovation Grant (CIG) which takes the CCSI concept to the farm level and educates ICP members. This project is the next level of CCSI and will establish dedicated regional hub farms that will feature conservation practices that are practical and achievable on varied soils and topography within each region of the state and evaluate what the practices mean to farm economics.

On Farm Network©

In 2011, ISDA started the Indiana On Farm Network© (IN OFN) in partnership with the Iowa Soybean Association. ISDA continues to administer the statewide IN OFN. The intent of OFN is to increase farmer profitability while reducing environmental impacts of grain production. The IN OFN focuses on nitrogen (N), both inorganic and organic. The overall goal of the IN OFN is to improve nitrogen management in corn production. To reach this goal in-field, evaluations, including aerial imagery, stalk sampling, precision mapping, etc. are used to guide on-farm decision making – leading to improved nitrogen management. IN OFN combines adaptive management, peer to peer learning, and nutrient management all in one. In 2012 the IN OFN consisted of 12 groups distributed across the state, encompassing a wide range of soil types, terrain, tillage, N types, N rates, and weather patterns, with the latter having huge variation across the state in this year of drought. Each one of these 12 groups has a leader who coordinates with growers on the ground. Group leaders come from all over the ICP including SWCD, NRCS, ISDA, and local watershed group personnel. The Indiana On-Farm Network© is a key initiative for ISDA as it represents the importance of not only continued support and promotion of conservation practices, but also the utilization of technology to improve farm efficiencies. In 2012 the IN OFN continued to significantly expand across the state adding more groups, growers, fields, and acres. This trend of expansion is expected to continue in the 2013 crop year. In 2012 the IN OFN consisted of 12 groups, encompassing 162 growers. The program included 386 guided stalk sampling fields and 33 replicated strip trial fields. Approximately 21,740 individual stalks were sampled and tested for nitrate levels. Approximately 29,400 acres were enrolled, which includes multi spectrum high resolution imagery and field history for all acres. Twelve winter grower meetings are scheduled in mid January 2013.

Conservation Reserve Enhancement Program (CREP)

2012 brought an additional 835 acres of CREP practices to the 11 CREP watersheds in Indiana, the vast majority of which were bottomland timber. Total practices for the year included 52 bottomland timber establishments, seven filter strips, two warm season grass plantings and one riparian buffer establishment. Over \$220,000 in state funds were paid this year.. As of the end of Federal Fiscal Year 2012 (September 30, 2012), CREP had awarded more than 1.7 million dollars in State funds to landowners, representing 6,935 acres of farmland. Also in 2012, the ISDA CREP program manager created new CREP steering committee, as the former committee has been inactive for some time. The new steering committee includes members of ISDA, NRCS, FSA, TNC, IDEM and SWCDs. One of the initial items of business the CREP steering committee decided to address was wetland eligibility. In the hopes of raising enrollment, the committee is considering lifting some limiting requirements starting in 2013 and freeing up potentially thousands of acres for wetland projects.

Nutrient Reduction Strategy.

At the request of the US Environmental Protection Agency (EPA), each state draining into the Mississippi River Basin was charged with creating a comprehensive state-wide nutrient reduction strategy. ISDA accepted the role of leading and developing the State of Indiana Nutrient Reduction Strategy in 2011. In developing the framework and

outline, ISDA met with stakeholders in water quality for input and updates. Meetings included individuals from Indiana Environmental Council, Indiana Water Monitoring Council, Indiana Groundwater Monitoring Committee, IDEM, NRCS, DNR, Purdue University, Farm Bureau, Wabash River Initiative, FSA, IN Chamber of Commerce, and the Indiana Builders Association. Division staff are close to finalizing the initial draft. Launching the development of the State of Indiana Nutrient Reduction Strategy represents an important milestone in regard to ISDA's commitments with EPA and ICP.

Technology and Accountability

The Division of Soil Conservation utilizes SharePoint 2007 and ArcGIS technologies to track, conduct data analyses, and report on the conservation workload activities achieved by Division's field staff.

Resource Specialists enter their conservation workload into a database housed on SharePoint. The Division's Program Manager of Accountability and Technology pairs this data with ArcGIS technologies to conduct data analyses to create maps featuring the impact Resource Specialists make on soil conservation and Indiana's water quality.

In 2012, Division of Soil Conservation and IDEM personnel coordinated efforts to train Division field staff how to utilize the Region 5 Model to calculate nutrient load reductions for each conservation practice they completed. Once trained, field staff conducted Region 5 Model analyses on all conservation practices completed since the induction of SharePoint in 2010. In 2012, Resource Specialists completed/installed a total of 321 conservation practices resulting in the reduction of 29,603 tons of sediment, 62,499 pounds of nitrogen, and 32,320 pounds of phosphorus.

Not only do Division personnel benefit from SharePoint, but ICP personnel as well. The Division of Soil Conservation's DSSs utilize this technology to collaborate more efficiently and effectively with Indiana's Soil and Water Conservation Districts. SharePoint is used by SWCD staff to submit Clean Water Indiana (CWI) grant reports, administer Conservation Reserve Enhancement Program landowner contracts, coordinate SWCD annual meetings and elections, edit and share documents, submit questions and concerns on discussion boards, coordinate calendars, and maintain updated staff and supervisor directories all in one location.

New this year, SWCDs that received a 2012 Clean Water Indiana watershed grant must enter conservation practices funded by CWI into SharePoint. RSs trained SWCD technicians how to enter the CWI conservation practices into SharePoint utilizing the conservation workload database. As CWI practices are completed, Resource Specialists will conduct the Region 5 Model analysis to capture nutrient load reductions.

The Division's Program Manager of Agricultural Affairs utilizes SharePoint to coordinate with Indiana Conservation Partnership personnel regarding activities related to the On-Farm Network© Program. The site is also used by Iowa's On-Farm Network© personnel to download field shapefiles, as-applied and yield data. Partners involved with the Conservation Cropping System Initiative also utilize SharePoint to track technical assistance, coordinate a mentoring program, document in-kind workload, and store landowner forms. To date, over 250 Division and Indiana Conservation Partnership personnel are utilizing the Division's SharePoint site.

OTHER PARTNERSHIPS AND INITIATIVES

Western Lake Erie Basin Partnership

ISDA-DSC continues to be actively involved with the Western Lake Erie Basin Partnership (WLEB) efforts to help reduce sediment and nutrient loading from the Maumee River and its tributaries into the Western Basin of Lake Erie. One of our District Support Specialists represents the State of Indiana on the Leadership and Operations Committees of this Indiana, Ohio and Michigan partnership. During 2012 the partnership focused its attention on efforts to help accelerate implementation of best management practices and technologies that help reduce soluble phosphorus loading in to Lake Erie. Soluble phosphorus has been linked as a significant contributor to the increasing size and scope of algae blooms found in the western basin of Lake Erie the last several summers. During 2012 the District Support Specialist helped plan and conduct two multi-state educational workshops/field days. These

included the Tri-State Conservation Farming Expo hosted by the St. Joseph River Watershed Initiative held in Montpelier, Ohio and the Agronomy Field Day hosted by the Anderson Company in Waterloo, Indiana.

WLEB Farmer Focus Group Initiative

During the summer of 2012 a small group of WLEB Partnership representatives including ISDA's District Support Specialist was approached by Grand View Consulting Group about forming a WLEB Farmer Focus Group to gain further insight from farmers on how best to address the soluble phosphorus problem in the western basin of Lake Erie as well as how to improve federal conservation programs to assist farmers in this effort. This consulting group is being funded by the Packard Foundation to establish this initiative. They have entered into an agreement with the Allen, Indiana SWCD to lead and administer the effort. A team representing the Nature Conservancy, Ohio NRCS, Allen SWCD and ISDA's District Support Specialist established the initial Farmer Focus Group made up of 15 farmers from Indiana, Ohio and Michigan and conducted the first focus group meeting in late August. The meeting went extremely well with the farmers getting a more in depth look at the phosphorus issue and beginning to provide excellent input on farmer driven solutions and conservation program improvements needed. A second focus group meeting is being planned for February, 2013 with an expansion of the number of farmers from 15 to about 25. A final report will be produced from this initiative to include a set of recommendations the consulting group can provide to the Packard Foundation, NRCS and federal conservation program policy developers.

WLEB 4R Stewardship Certification Program

A new initiative has been under development in 2012 to establish a 4R Nutrient Stewardship Certification Program for Retail Fertilizer Suppliers in the western Lake Erie Basin. This voluntary program is being spearheaded by the Andersons Company, Morral Fertilizer Company, the Nature Conservancy in cooperation with Ohio DNR-Division of Soil and Water, Ohio NRCS and several others. The ISDA-DSC District Support Specialist working on the WLEB related initiatives is serving on the planning/advisory committee for developing this program. The goal is to begin testing the program with dealers of participating companies this winter.

Great Lakes Commission Sediment Control Program

One of our District Support Specialists serves as Chairman of the Great Lakes Commission's Erosion and Sediment Control Task Force which has representatives on it from the eight states in the Great Lakes Basins. One of the task force's key responsibilities is to direct the development of the grant guidelines for the Commission's Erosion and Sediment Control Demonstration Grants Program and then conduct a review of grant proposals to select grant award recipients each year. Currently there are three active watershed based demonstration projects underway in Indiana utilizing funding from this program. Those include the St. Mary's River Watershed administered by the Adams County SWCD, the Upper Maumee River Watershed Project administered by the Allen County SWCD and the Elkhart River Watershed Project administered by Elkhart River Restoration Association with assistance from the Elkhart County SWCD. Each of these projects received funding in excess of \$300,000 for three year projects. Recently the DeKalb County SWCD received a small grant from this program to purchase a small seeds no-till drill for seeding cover crops.

Ohio River Basin Water Quality Trading Project: Pilot Trading Plan by the states of Indiana, Kentucky and Ohio

In August 2012, representatives from the states of Indiana, Kentucky, and Ohio signed an agreement to create the Ohio River Basin Water Quality Trading Program, a pilot program allowing farmers and industrial facilities to trade pollution credits to reduce fertilizer run-off and nutrient discharges. The project was conceived by Electric Power Research Institute (EPRI) in conjunction with the states of Indiana, Ohio, Kentucky, the U.S. Department of Agriculture Natural Resources Conservation Service, American Farmland Trust, the Ohio Farm Bureau, and ORSANCO. The goal is to establish a private sector trading market that is self sustaining and does not involve government subsidy. Indiana counties participating will include Wayne, Dearborn, Ripley, Ohio, and Switzerland. The program will run through 2015 and received \$1.3 million in federal funding from the US Department of

Agriculture and the EPA, as well as support from large investor-owned utilities like AEP and Duke Power. The ISDA-DSC District Support Specialist for the region has been serving as an advisor and representative for the project and works with EPRI, American Farmland Trust, DSC Resource Specialists, participating County SWCDs, and USDA-NRCS District Conservationists.

Red Gold Stewardship Award

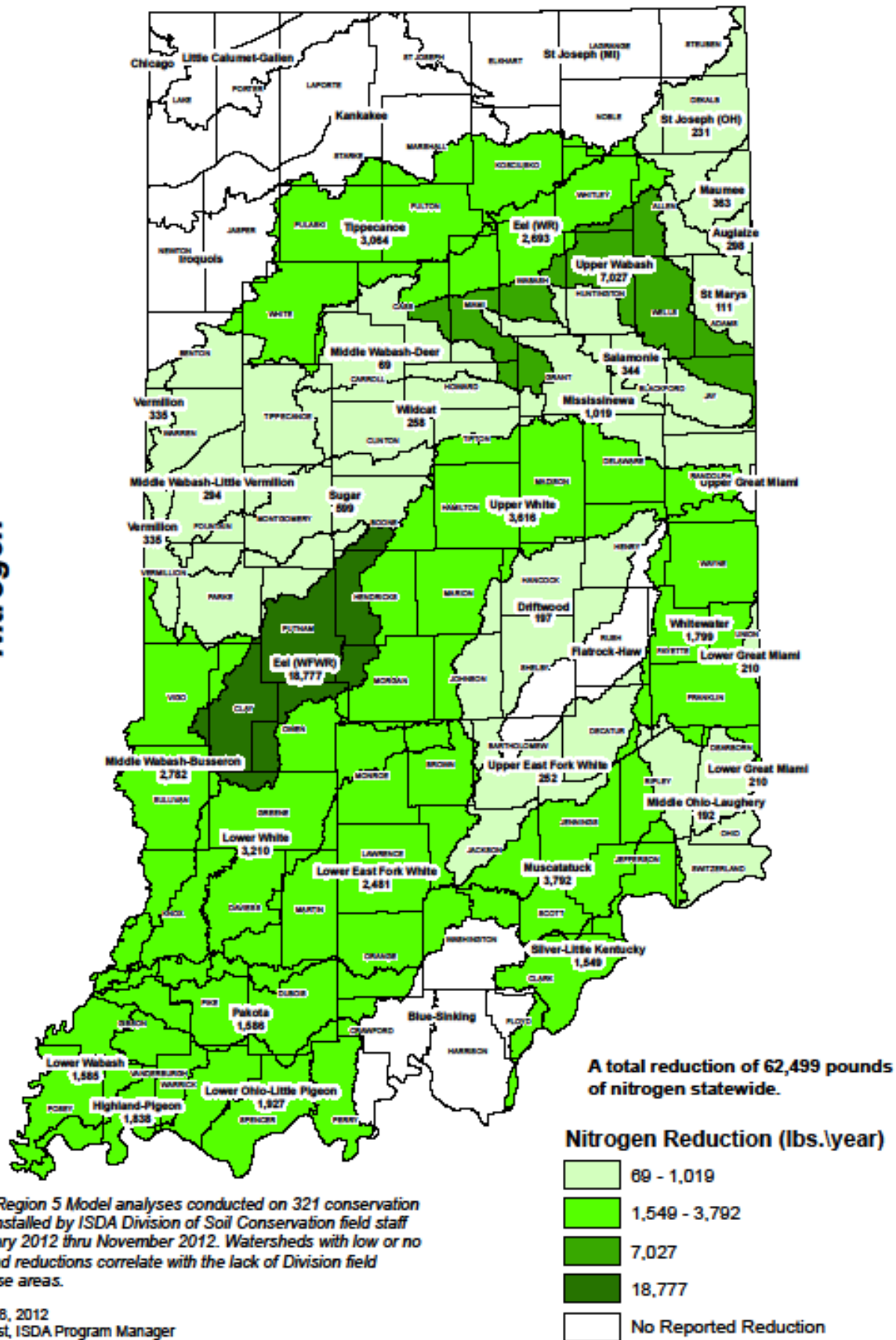
The Red Gold Stewardship Award Program was established in partnership with the ISDA DSC to showcase the conservation efforts employed by Red Gold Growers. The goal of this award program was to highlight the practices already undertaken by conservation minded-growers and stimulate a proactive approach among all of Red Gold growers to evaluate their farm management practices and make improvements.

This program is driven by Red Gold's desire to demonstrate their companywide commitment to good stewardship practices. Red Gold asks their tomato producers to adopt good conservation practices and has instilled an atmosphere of continuous improvement. The Award Program provides both a recognition and monetary award to recipients.

The award program examines a whole farm and systems approach to conservation. As a result, there is a strong emphasis on complete integration of stewardship of natural resources. While each conservation measure is beneficial, the true impact is realized when the measures taken are systematic.–All scoring and judging of the Award is conducted independently by the Indiana State Department of Agriculture, Division of Soil Conservation. The Award program was initiated in 2009. In 2012 the ISDA DSC was once again proud to partner with Red Gold in this year's Stewardship Award Program.

Red Gold is a premier full-line tomato processing company with its corporate headquarters located in Orestes, Indiana. The company operates state-of-the-art manufacturing facilities in Elwood, Orestes and Geneva, Indiana.

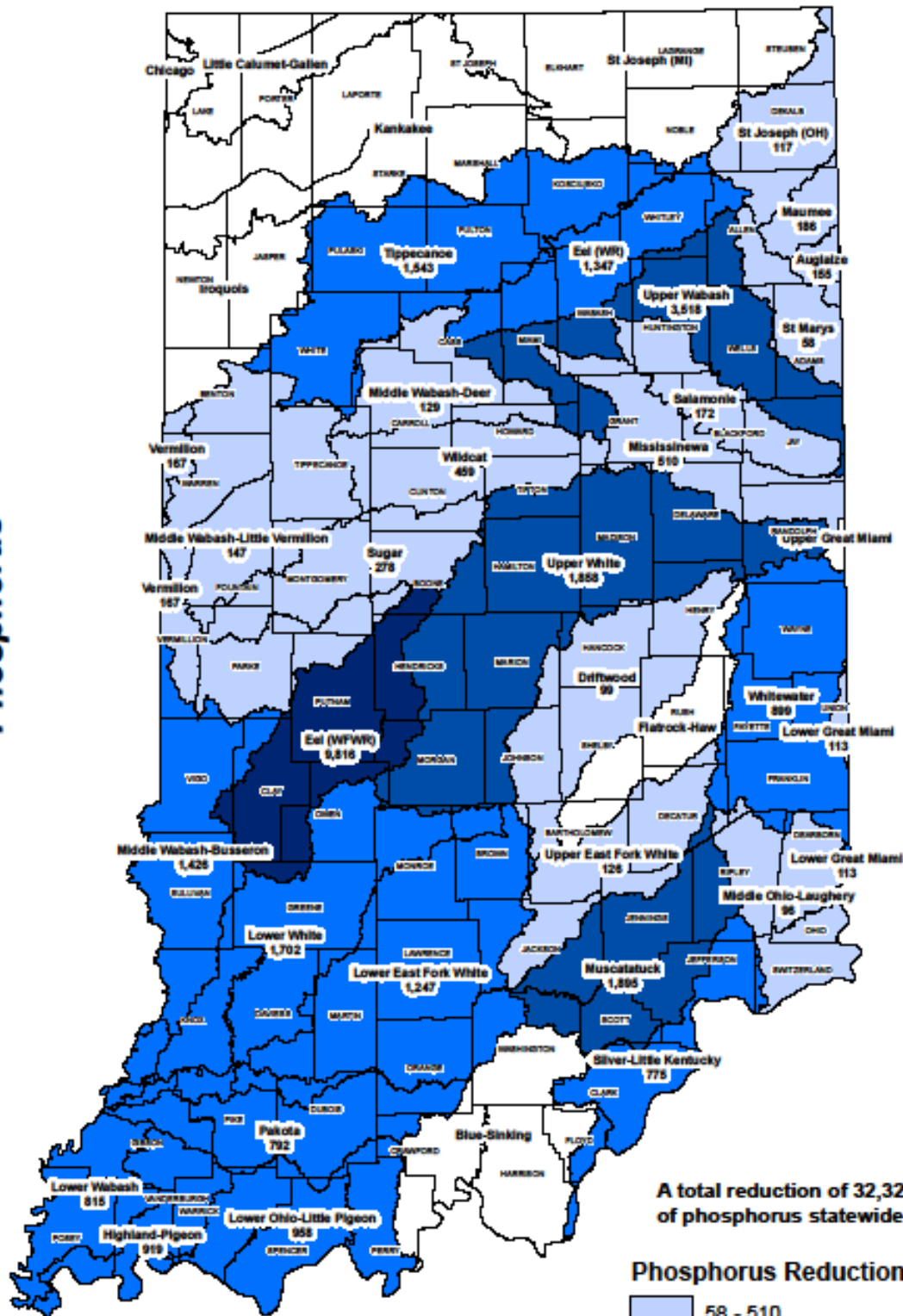
2012 Nutrient Load Reductions Nitrogen



Based on Region 5 Model analyses conducted on 321 conservation practices installed by ISDA Division of Soil Conservation field staff from January 2012 thru November 2012. Watersheds with low or no nutrient load reductions correlate with the lack of Division field staff in those areas.

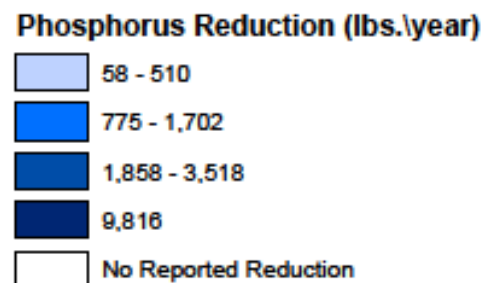
November 28, 2012
Deb Fairhurst, ISDA Program Manager

2012 Nutrient Load Reductions Phosphorus

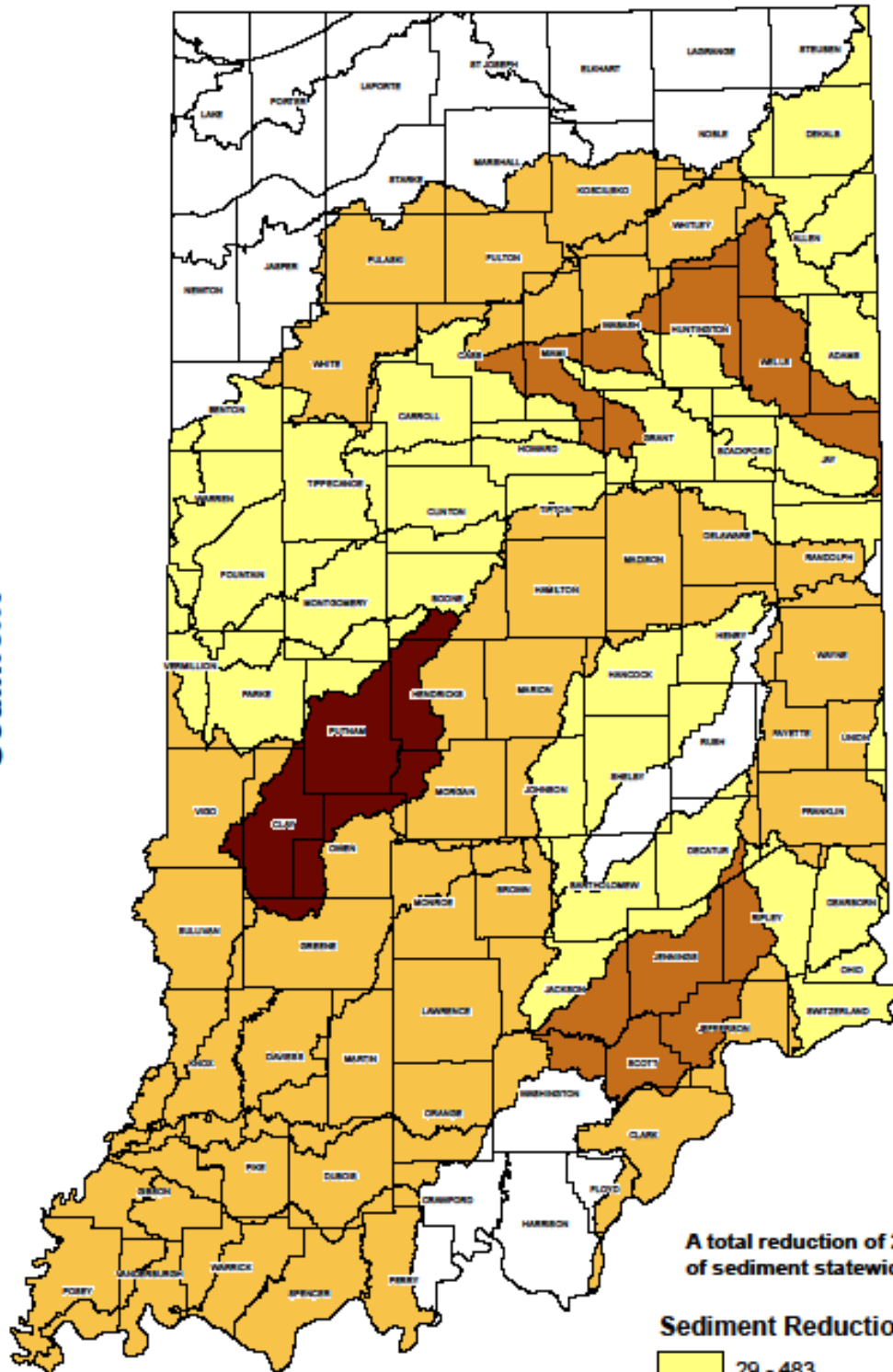


Based on Region 5 Model analyses conducted on 321 conservation practices installed by ISDA Division of Soil Conservation field staff from January 2012 thru November 2012. Watersheds with low or no nutrient load reductions correlate with the lack of Division field staff in those areas.

November 28, 2012
Deb Fairhurst, ISDA Program Manager

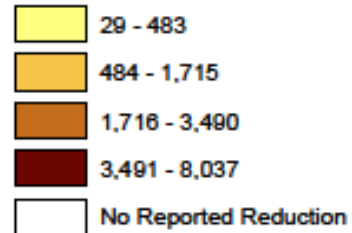


2012 Nutrient Load Reductions Sediment



A total reduction of 29,603 tons of sediment statewide.

Sediment Reduction (tons/year)



Based on Region 5 Model analyses conducted on 321 conservation practices installed by ISDA Division of Soil Conservation field staff from January 2012 thru November 2012. Watersheds with low or no nutrient load reductions correlate with the lack of Division field staff in those areas.

November 28, 2012
Deb Fairhurst, ISDA Program Manager

January 7, 2013

Section 319 Activities

- The FFY13 319 budget is anticipated to be the same as last year: \$3.3M. We received 19 proposals requesting \$6.5M and are in the review process now.
- Section 319 NPS implementation projects funded during FFY 2012 were successful at implementing BMPs across the state. Some of the BMPs implemented this fiscal year compared with last fiscal year include:

BMP	Approximate Number FFY 2011	Approximate Number FFY 2012
Cover Crop	2,808 acres	10,147 acres
Fence	55,745 feet	42,472 feet
Grassed Waterway	3,768 feet	2,721 feet
Heavy Use Area Protection	55,194 sq. feet	49,059 sq. feet
Nutrient Management	953 acres	3,300 acres
Pasture and Hay Planting	402 acres	214 acres
Pest Management	666 acres	0 acres
Residue Management, Mulch Till, No-Till	4,677 acres	1,643 acres
Streambank and Shoreline Protection	7,792 feet	608 feet
Watering Facility	1 each	9 each
Porous Pavement	2,650 sq. feet	5,000 sq. feet
Rain Barrels	47 each	14 each

Other BMPs implemented by landowners include diversion, pipeline, prescribed grazing, rain gardens, roof runoff management, stream crossing, and water and sediment control basin.

January 7, 2013

Estimated load reductions from these practices follow:

Nonpoint Source Pollutant	Estimated Reduction FFY 2011	Estimated Reduction FFY 2012
Sediment	28,880 tons/yr	47,616 tons/yr
Phosphorus	33,434 lbs/yr	94,980 lbs/yr
Nitrogen	70,450 lbs/yr	141,709 lbs/yr
Biological Oxygen Demand	6,628 lbs/yr	29,542 lbs/yr
Chemical Oxygen Demand	1,977 lbs/yr	2,709 lbs/yr
Pesticides	490 lbs/yr	0 lbs/yr
Suspended Solids	5,970 lbs/yr	35,122 lbs/yr
Lead	5 lbs/yr	10 lbs/yr
Zinc	7 lbs/yr	14 lbs/yr
Copper	0 lbs/yr	1 lbs/yr

State Nonpoint Source Management Plan Revision: this year, we will be updating the State Nonpoint Source Management Plan which identifies goals, objectives and priorities for funding and eligible activities. Of the 143 surveys sent to individuals in the ICP agencies and other stakeholder organizations, seven were returned. We will be seeking further input through meetings and ask for your support in this endeavor.

Monitoring Activities

2012

Targeted Monitoring projects included the following:

- NPS Baseline monitoring for watershed planning and restoration activities:
 - Finished Plummer Creek and Little Calumet
 - Continuing Indiana-Kentuck

January 7, 2013

- Lakes Monitored for Cyanobacteria – 13 sites on 10 lakes sampled June thru the end of August; see
- TMDL Sampling: Sand Creek, Big Creek and White Oak

Probabilistic Monitoring was completed in the Patoka Basin

2013

Targeted monitoring projects proposed:

- TMDL/Baseline in Deep River
- Lake cyanobacteria monitoring will continue at 13 sites on the 10 DNR state recreational areas
- Performance measures monitoring TBD (possibly Upper Tippecanoe and Blue River in Harrison Co.)
- Grand Calumet

Probabilistic monitoring in White River, East Fork Basin

Special Project: We have submitted a proposal for fish tissue, macroinvertebrate community and sediment contaminant and toxicity monitoring on the Grand Calumet River and Indiana Harbor Ship Canal for the purpose of delisting for beneficial use impairments and removal from the Indiana 303(d) list

Hoosier River Watch

In November, the Hoosier River Watch (HRW) program, which is managed by Lisa Ritter-McMahan, moved from IDNR to IDEM in the Watershed Assessment and Planning branch. The mission of Hoosier Riverwatch is “To involve the citizens of Indiana in becoming active stewards of Indiana’s water resources through watershed education.” This mission is accomplished through the following goals:

- Educate citizens on watersheds and the relationship between land use and water quality.
- Train citizens on the basic principles of water quality monitoring.
- Promote opportunities for involvement in water quality issues.
- Provide water quality information to individuals or groups working to protect water resources.
- Support volunteers’ efforts through technical assistance, monitoring equipment, networking opportunities, and educational materials.

Hoosier Riverwatch utilizes trained volunteer facilitators around the state to not only conduct workshops, but serve as a local resource in their community

2012

January 7, 2013

In 2012, HRW conducted 28 Basic Workshops, 1 *E. coli*, 1 Healthy Water, Healthy People, and 1 Protecting Our Watersheds. Approximately 300 participants went through the programs and facilitators contributed over \$7000 in in-kind donations.

2013 Workshops are still being scheduled, but here is what we have so far:

Tuesday, March 5

Bloomington, IN—

Friday, April 5

Rensselaer, IN

To register contact Darci Zolman at darci.zolman@in.nacdnet.net or 574-267-7445, x3

Thursday, June 20

Brook, IN - Brook Conservation Club

To register contact Darci Zolman at darci.zolman@in.nacdnet.net or 574-267-7445, x3

Saturday, September 28

Elkhart, IN - Elkhart Conservation Club

To register contact Nancy Brown at nancy.brown@in.nacdnet.net or 574-533-4383 ext. 3