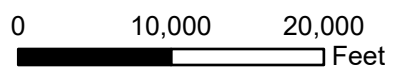
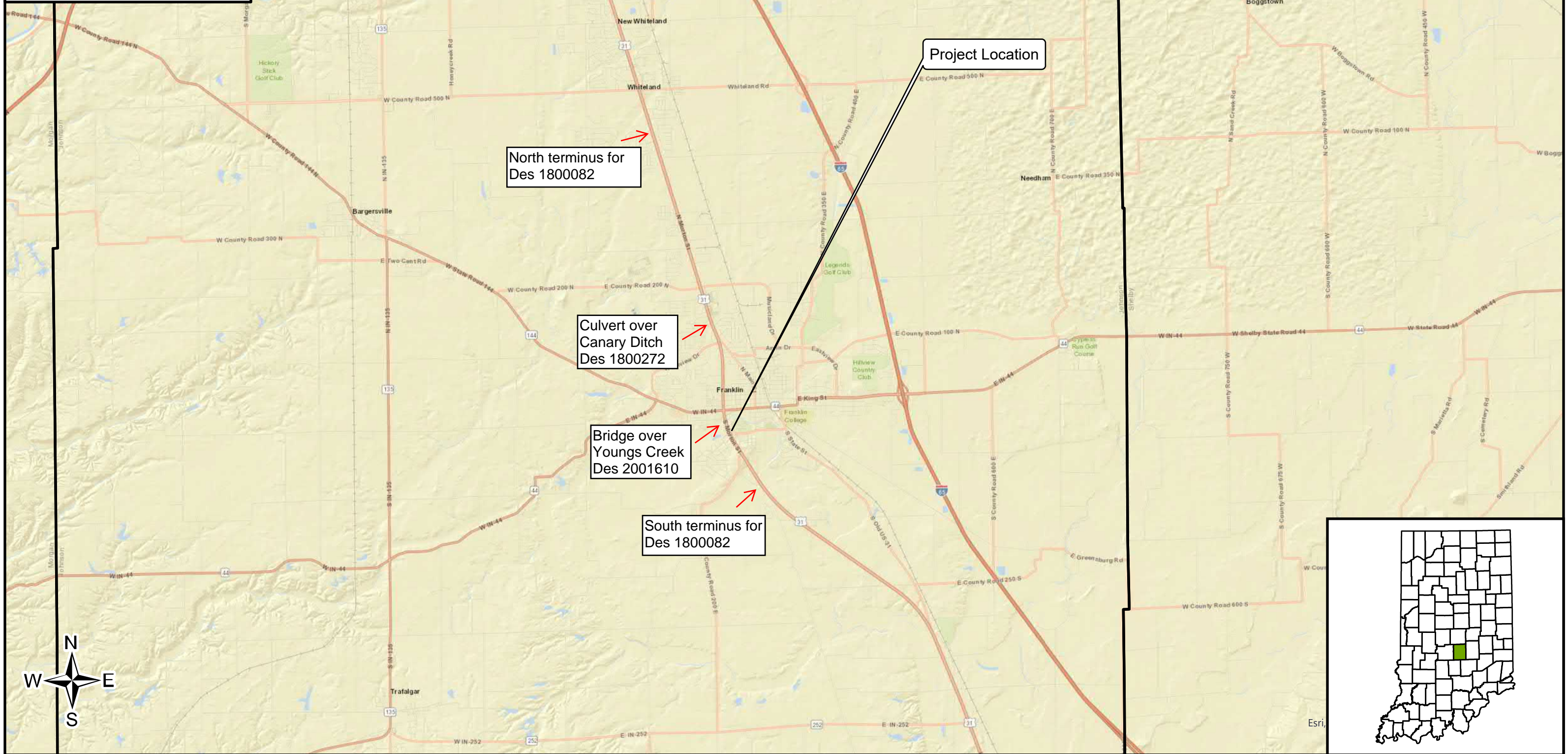
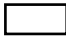

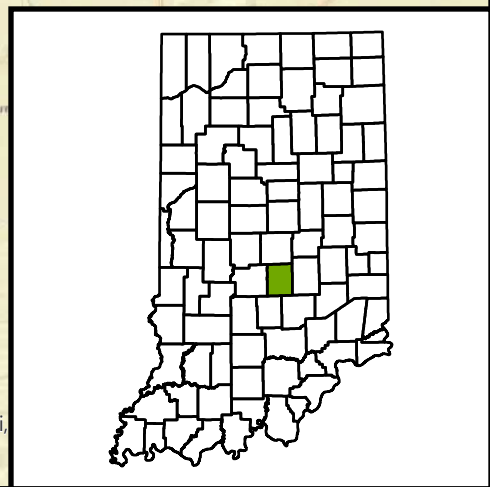


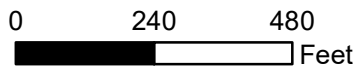
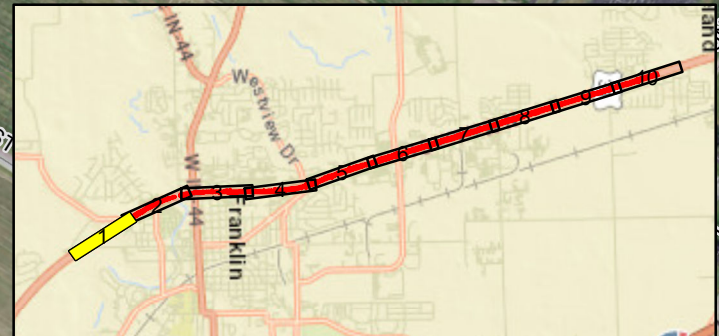
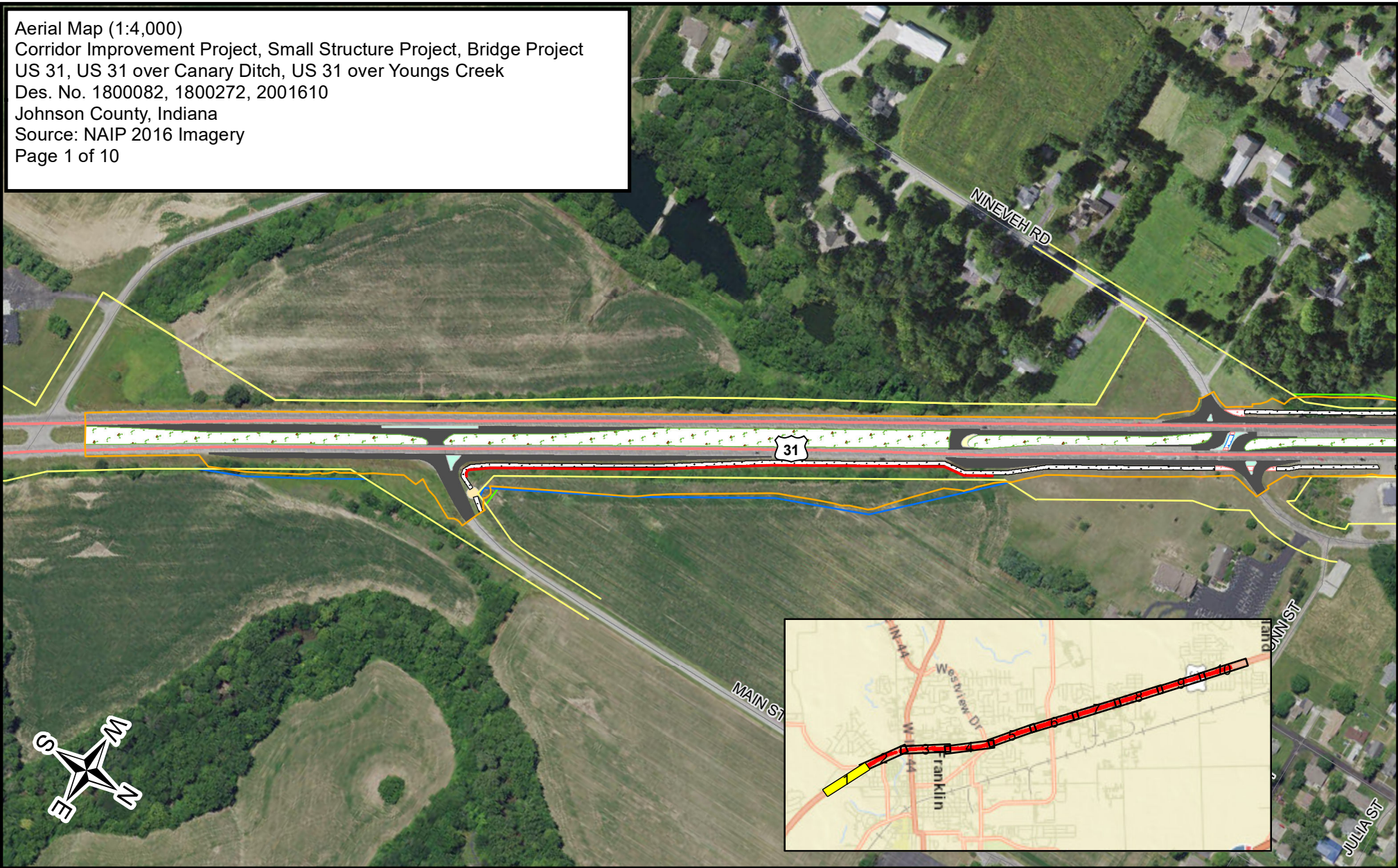
Project Location Map (1:89,600)
 Roadway Reconstruction Project
 US 31 from CR 80 S to Israel Lane
 Des. No. 1800082
 Johnson County, Indiana
 Source: US Geological Survey PLSS



 County Boundary
 Project County



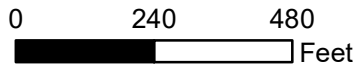
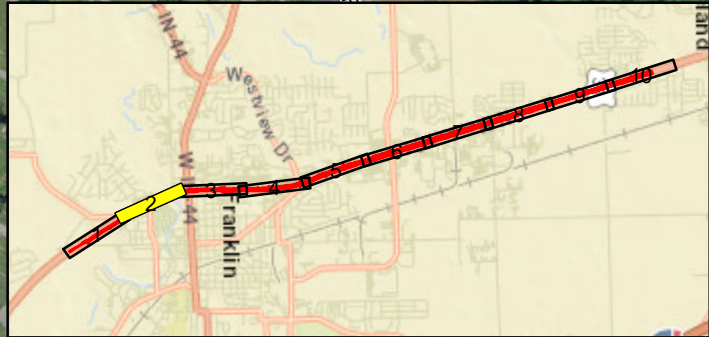
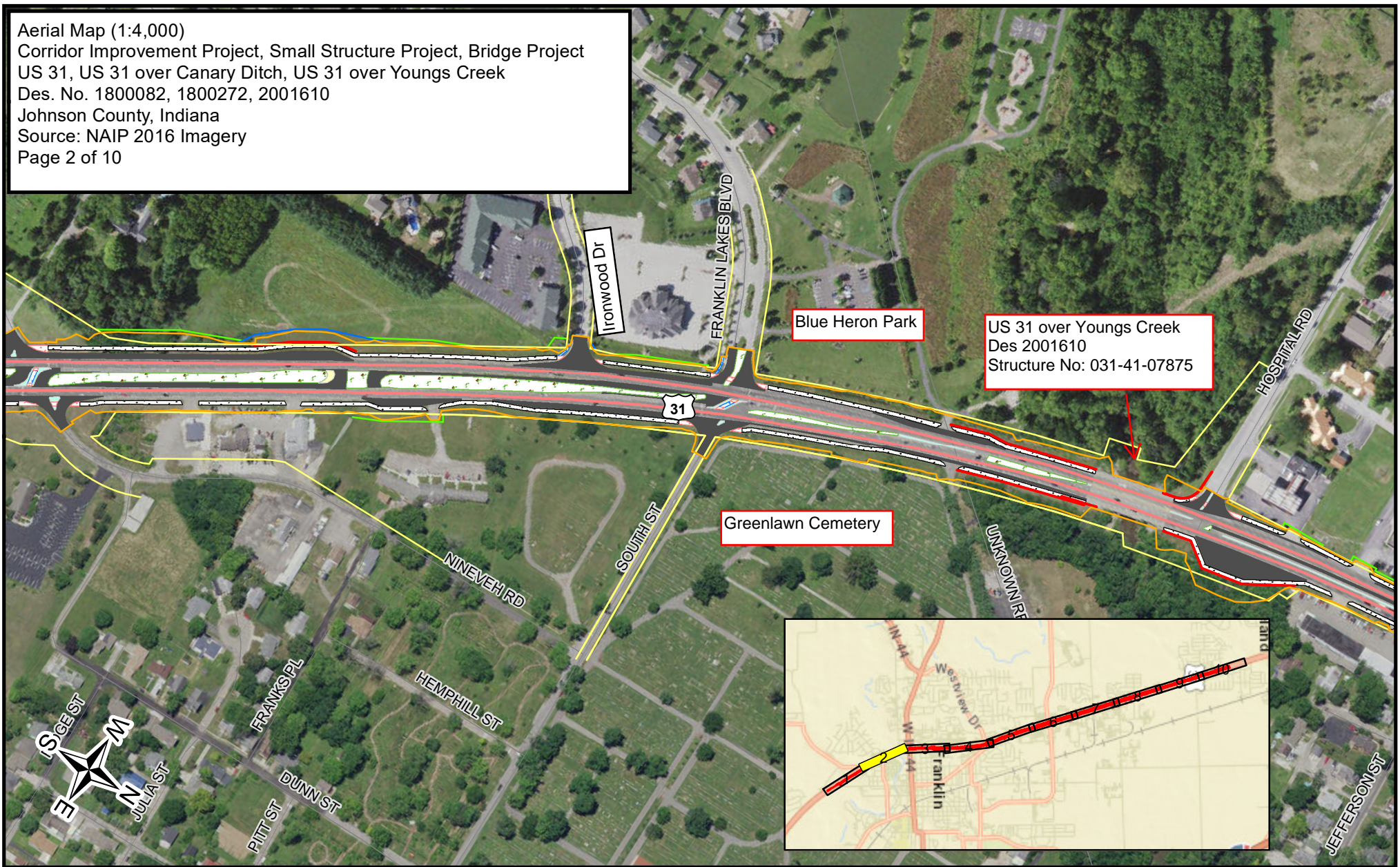
Aerial Map (1:4,000)
 Corridor Improvement Project, Small Structure Project, Bridge Project
 US 31, US 31 over Canary Ditch, US 31 over Youngs Creek
 Des. No. 1800082, 1800272, 2001610
 Johnson County, Indiana
 Source: NAIP 2016 Imagery
 Page 1 of 10



- | | | |
|---------------------|-------------------|------------------|
| Construction Limits | Concrete Pavement | Sodding |
| Existing ROW | Paved Trail | Concrete Curb |
| Permanent ROW | ADA Curb Ramp | Asphalt Pavement |
| Temporary ROW | Concrete Sidewalk | |
| Pedestrian Handrail | Trail Medallion | |
- 6/29/2022



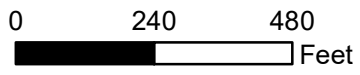
Aerial Map (1:4,000)
 Corridor Improvement Project, Small Structure Project, Bridge Project
 US 31, US 31 over Canary Ditch, US 31 over Youngs Creek
 Des. No. 1800082, 1800272, 2001610
 Johnson County, Indiana
 Source: NAIP 2016 Imagery
 Page 2 of 10



- | | | |
|---------------------|-------------------|------------------|
| Construction Limits | Concrete Pavement | Concrete Curb |
| Existing ROW | Paved Trail | Asphalt Pavement |
| Permanent ROW | ADA Curb Ramp | Removed Drive |
| Temporary ROW | Concrete Sidewalk | |
| Pedestrian Handrail | Sodding | |
- 6/29/2022



Aerial Map (1:4,000)
 Corridor Improvement Project, Small Structure Project, Bridge Project
 US 31, US 31 over Canary Ditch, US 31 over Youngs Creek
 Des. No. 1800082, 1800272, 2001610
 Johnson County, Indiana
 Source: NAIP 2016 Imagery
 Page 3 of 10

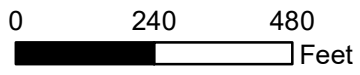
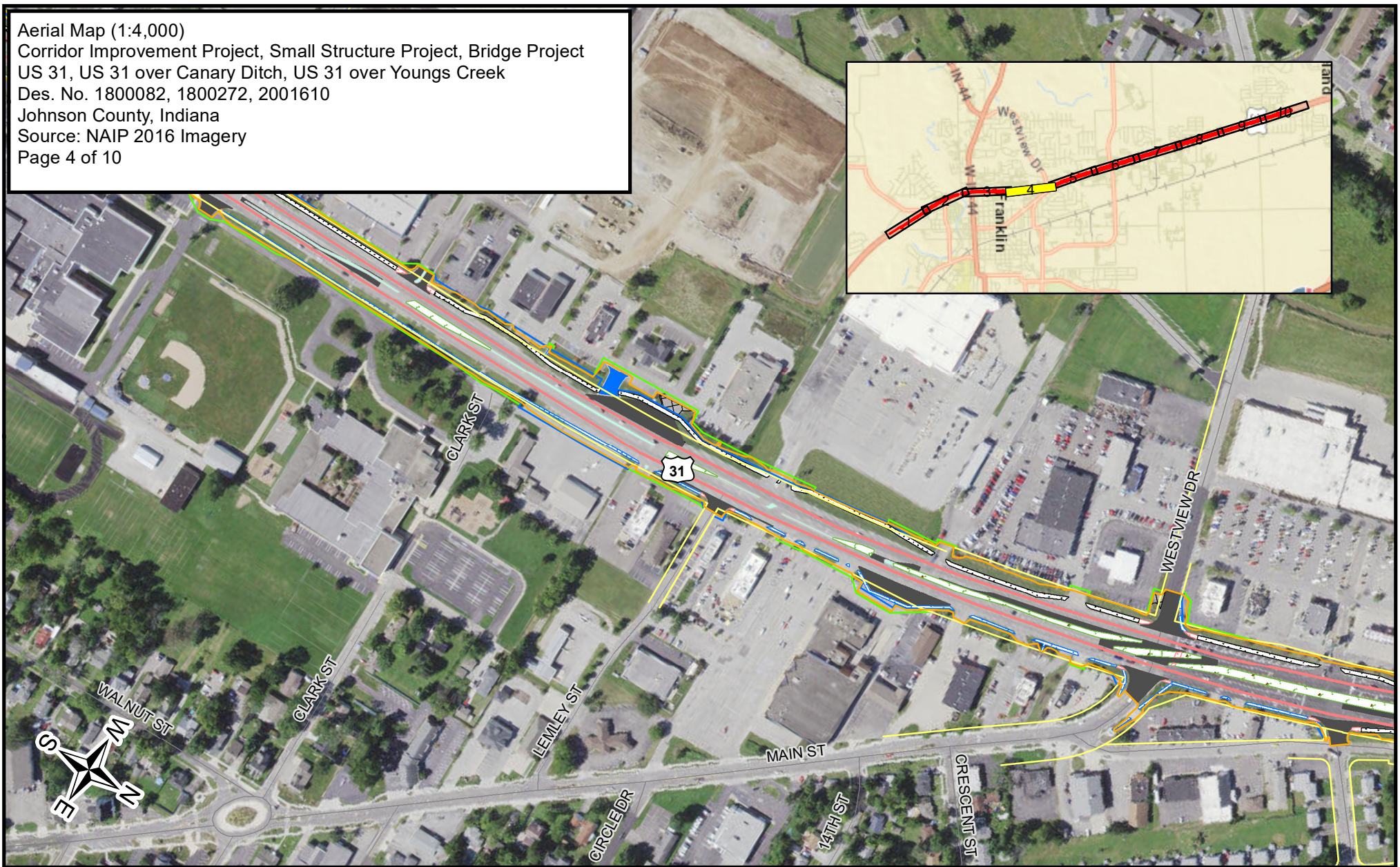


- | | | |
|---------------------|-------------------|------------------|
| Construction Limits | Paved Trail | Asphalt Pavement |
| Existing ROW | ADA Curb Ramp | Relocated Drive |
| Permanent ROW | Concrete Sidewalk | Removed Drive |
| Temporary ROW | Sodding | |
| Pedestrian Handrail | Concrete Curb | |

6/29/2022



Aerial Map (1:4,000)
 Corridor Improvement Project, Small Structure Project, Bridge Project
 US 31, US 31 over Canary Ditch, US 31 over Youngs Creek
 Des. No. 1800082, 1800272, 2001610
 Johnson County, Indiana
 Source: NAIP 2016 Imagery
 Page 4 of 10



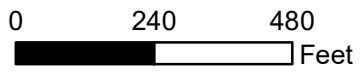
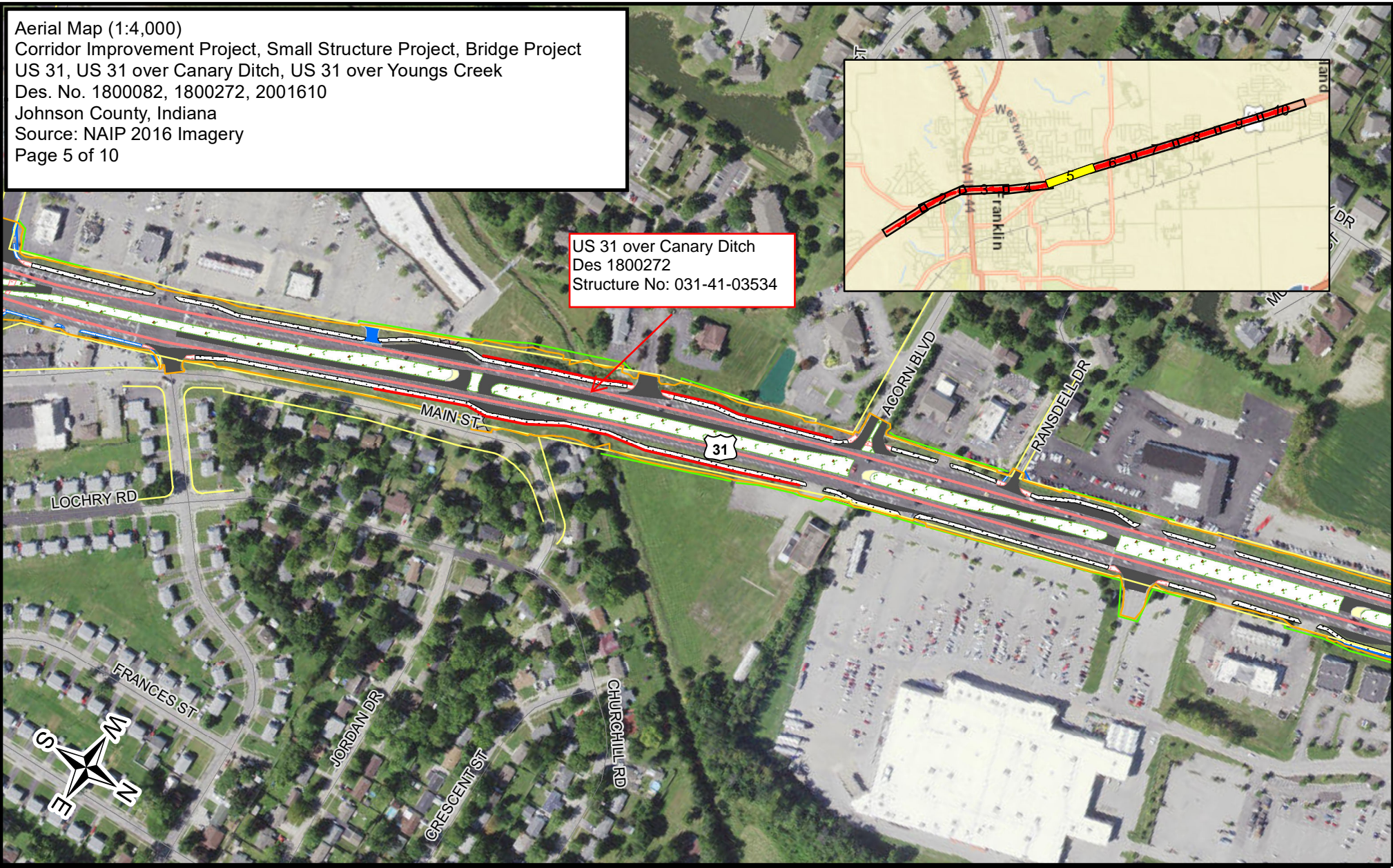
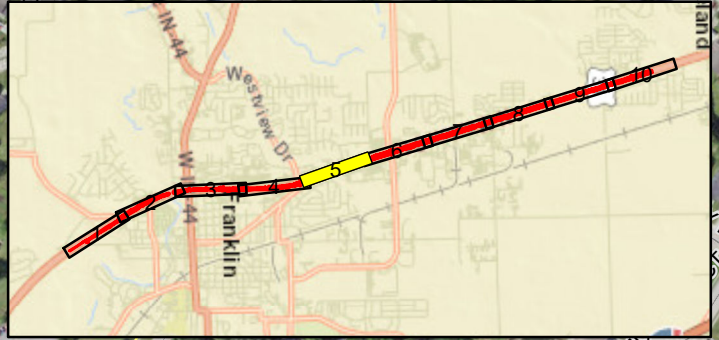
- | | | |
|-----------------------|---------------------|-------------------|
| — Construction Limits | ▨ ADA Curb Ramp | ■ Relocated Drive |
| — Existing ROW | ▨ Concrete Sidewalk | ▨ Removed Drive |
| — Permanent ROW | ▨ Sodding | |
| — Temporary ROW | ▨ Concrete Curb | |
| ▨ Paved Trail | ■ Asphalt Pavement | |

6/29/2022



Aerial Map (1:4,000)
 Corridor Improvement Project, Small Structure Project, Bridge Project
 US 31, US 31 over Canary Ditch, US 31 over Youngs Creek
 Des. No. 1800082, 1800272, 2001610
 Johnson County, Indiana
 Source: NAIP 2016 Imagery
 Page 5 of 10

US 31 over Canary Ditch
 Des 1800272
 Structure No: 031-41-03534

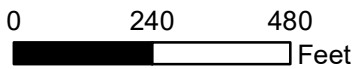
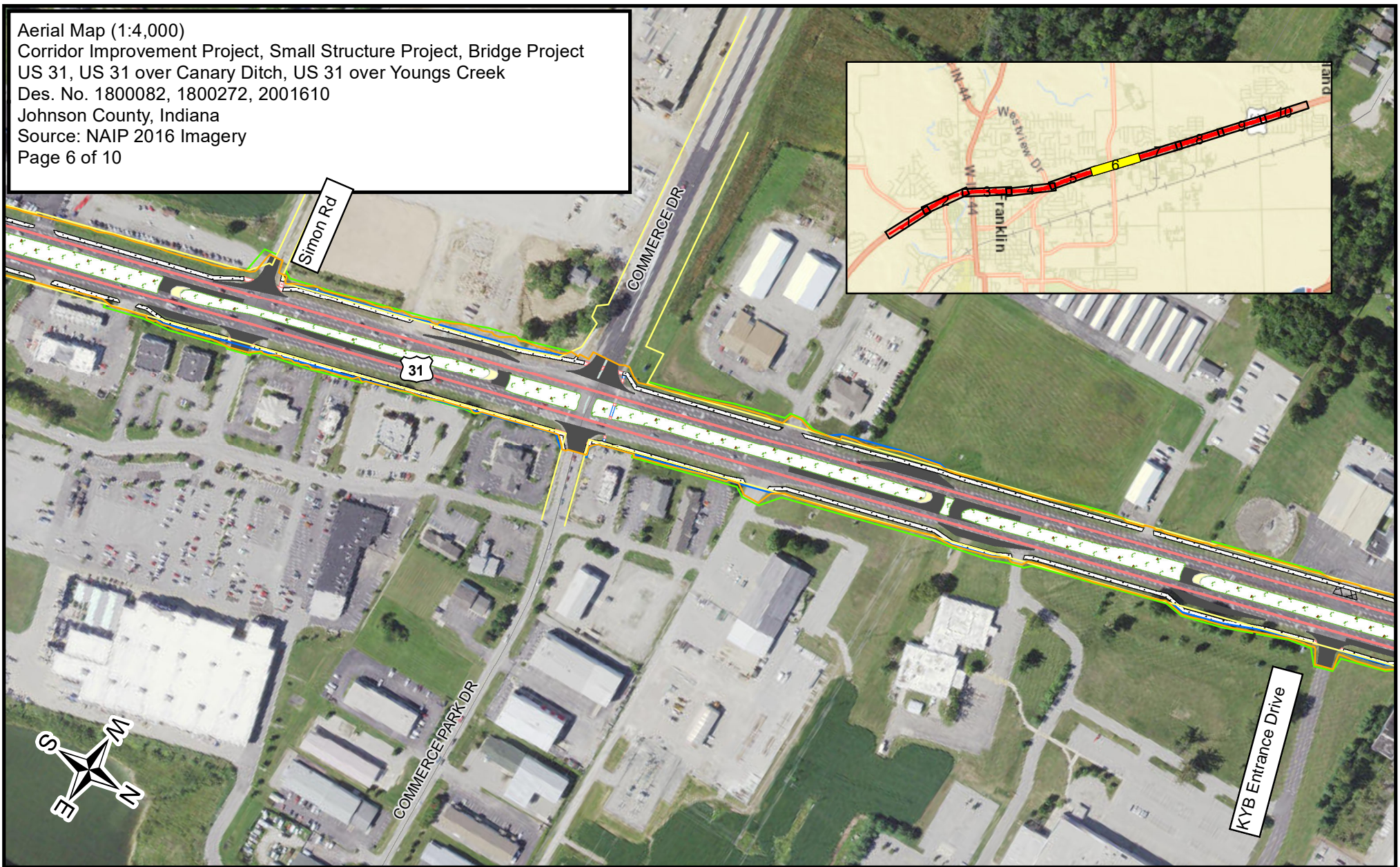


- Construction Limits
- Existing ROW
- Permanent ROW
- Temporary ROW
- Pedestrian Handrail
- Concrete Pavement
- Paved Trail
- ADA Curb Ramp
- Concrete Sidewalk
- Sodding
- Asphalt Pavement
- Relocated Drive
- Removed Drive

6/29/2022



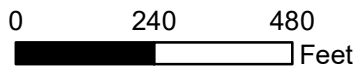
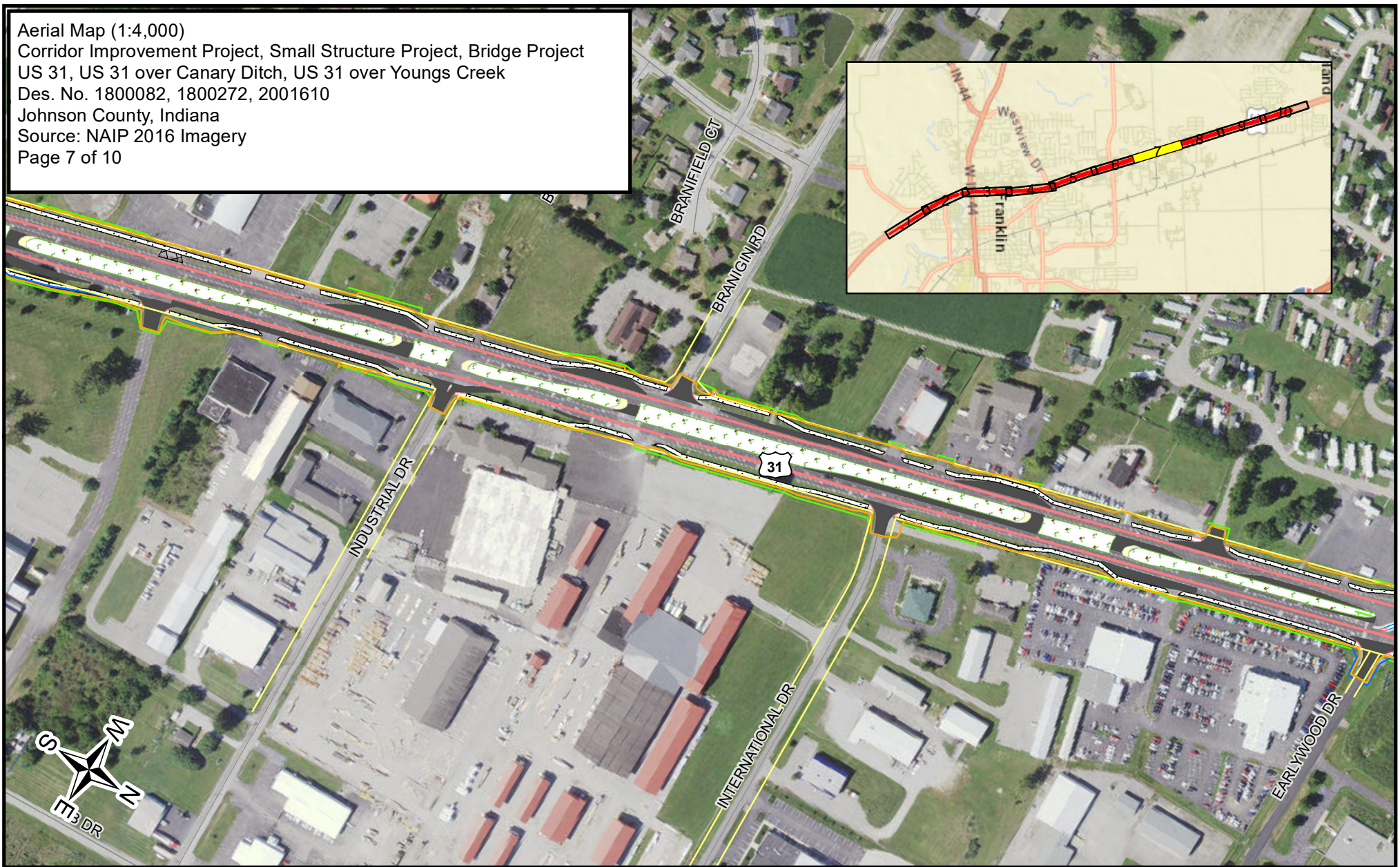
Aerial Map (1:4,000)
 Corridor Improvement Project, Small Structure Project, Bridge Project
 US 31, US 31 over Canary Ditch, US 31 over Youngs Creek
 Des. No. 1800082, 1800272, 2001610
 Johnson County, Indiana
 Source: NAIP 2016 Imagery
 Page 6 of 10



- | | | |
|---------------------|-------------------|------------------|
| Construction Limits | Paved Trail | Asphalt Pavement |
| Existing ROW | ADA Curb Ramp | Removed Drive |
| Permanent ROW | Concrete Sidewalk | |
| Temporary ROW | Sodding | |
| Concrete Pavement | Concrete Curb | |
- 6/29/2022



Aerial Map (1:4,000)
 Corridor Improvement Project, Small Structure Project, Bridge Project
 US 31, US 31 over Canary Ditch, US 31 over Youngs Creek
 Des. No. 1800082, 1800272, 2001610
 Johnson County, Indiana
 Source: NAIP 2016 Imagery
 Page 7 of 10

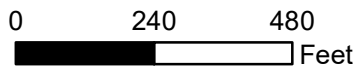
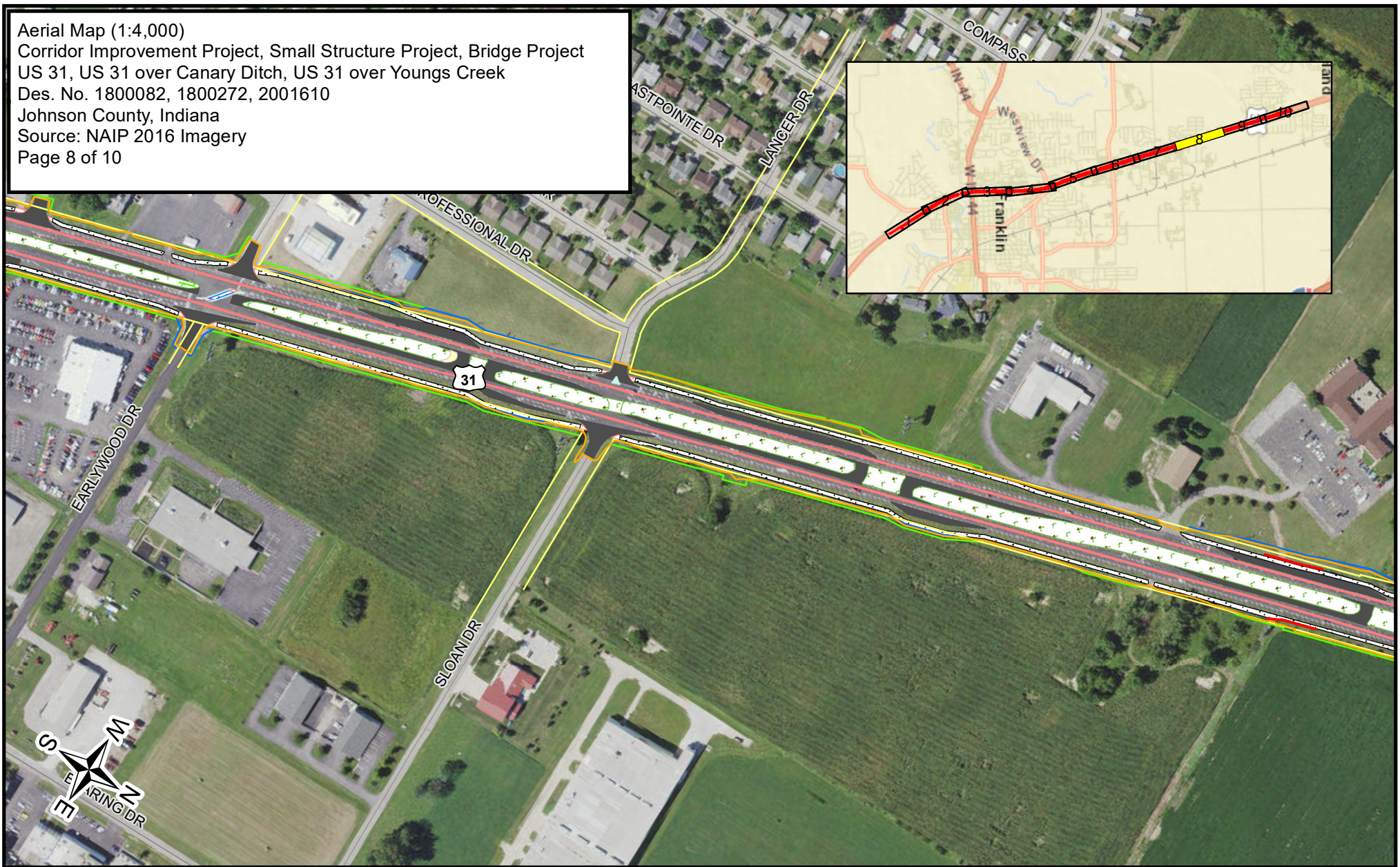


- | | | |
|---------------------|-------------------|------------------|
| Construction Limits | Paved Trail | Asphalt Pavement |
| Existing ROW | ADA Curb Ramp | Removed Drive |
| Permanent ROW | Concrete Sidewalk | |
| Temporary ROW | Sodding | |
| Concrete Pavement | Concrete Curb | |

6/29/2022



Aerial Map (1:4,000)
 Corridor Improvement Project, Small Structure Project, Bridge Project
 US 31, US 31 over Canary Ditch, US 31 over Youngs Creek
 Des. No. 1800082, 1800272, 2001610
 Johnson County, Indiana
 Source: NAIP 2016 Imagery
 Page 8 of 10

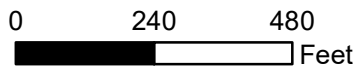
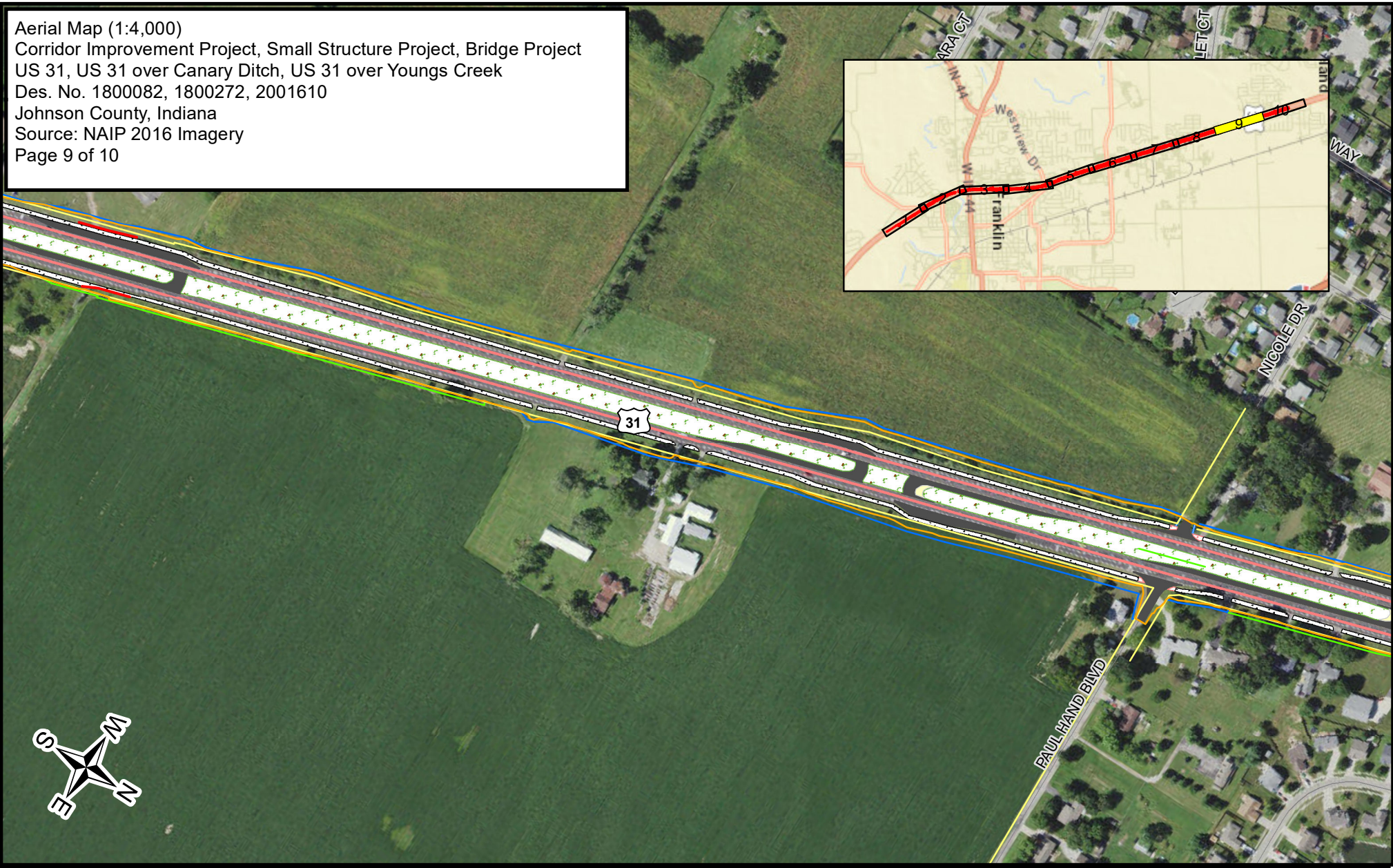


- | | | |
|---------------------|-------------------|------------------|
| Construction Limits | Concrete Pavement | Concrete Curb |
| Existing ROW | Paved Trail | Asphalt Pavement |
| Permanent ROW | ADA Curb Ramp | |
| Temporary ROW | Concrete Sidewalk | |
| Pedestrian Handrail | Sodding | |

6/29/2022



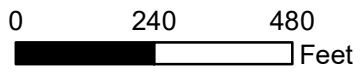
Aerial Map (1:4,000)
 Corridor Improvement Project, Small Structure Project, Bridge Project
 US 31, US 31 over Canary Ditch, US 31 over Youngs Creek
 Des. No. 1800082, 1800272, 2001610
 Johnson County, Indiana
 Source: NAIP 2016 Imagery
 Page 9 of 10



- Construction Limits
 - Existing ROW
 - Permanent ROW
 - Temporary ROW
 - Pedestrian Handrail
 - Concrete Pavement
 - Paved Trail
 - ADA Curb Ramp
 - Concrete Sidewalk
 - Sodding
 - Asphalt Pavement
- 6/29/2022



Aerial Map (1:4,000)
 Corridor Improvement Project, Small Structure Project, Bridge Project
 US 31, US 31 over Canary Ditch, US 31 over Youngs Creek
 Des. No. 1800082, 1800272, 2001610
 Johnson County, Indiana
 Source: NAIP 2016 Imagery
 Page 10 of 10



- | | | |
|---------------------|-------------------|------------------|
| Construction Limits | Paved Trail | Asphalt Pavement |
| Existing ROW | ADA Curb Ramp | |
| Permanent ROW | Concrete Sidewalk | |
| Temporary ROW | Sodding | |
| Concrete Pavement | Concrete Curb | |

6/29/2022

