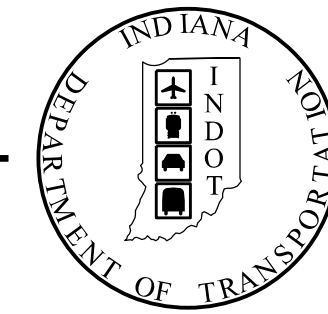


| | |
|----------|------------------|
| PROJECT | DESIGNATION |
| 2002234 | 2002234 |
| CONTRACT | CULVERT ASSET ID |
| R-43287 | CV 008-057-47.08 |

| KIN PROJECT INFORMATION | |
|-------------------------|---|
| DESIGNATION | PROJECT DESCRIPTION |
| 2002233 | SMALL STRUCTURE REPLACEMENT ON SR 9 OVER UNT OF DOVE CREEK |
| 2002234 (LEAD) | SMALL STRUCTURE REPLACEMENT ON SR 8 OVER UNT OF RUMMEL BRANCH |
| 2002235 | SMALL STRUCTURE REPLACEMENT ON SR 9 OVER UNT OF STEFFY DITCH |

INDIANA DEPARTMENT OF TRANSPORTATION



ROAD PLANS

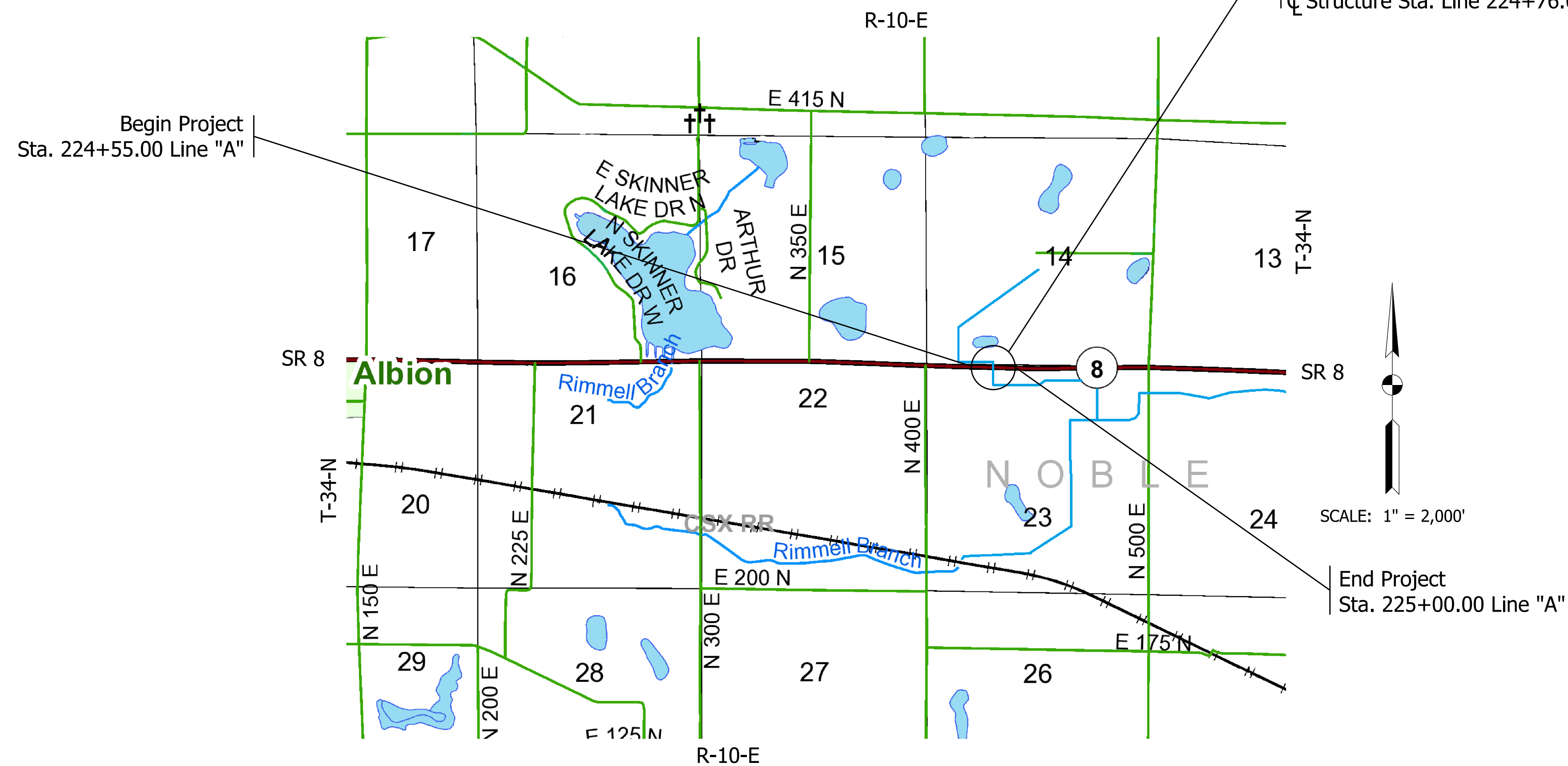
ROUTE: SR 8 AT: RP 47+08

STAGE 2 PLANS
FEBRUARY 2023

PROJECT NO. 2002234 P.E.
2002234 R/W
2002234 CONST.

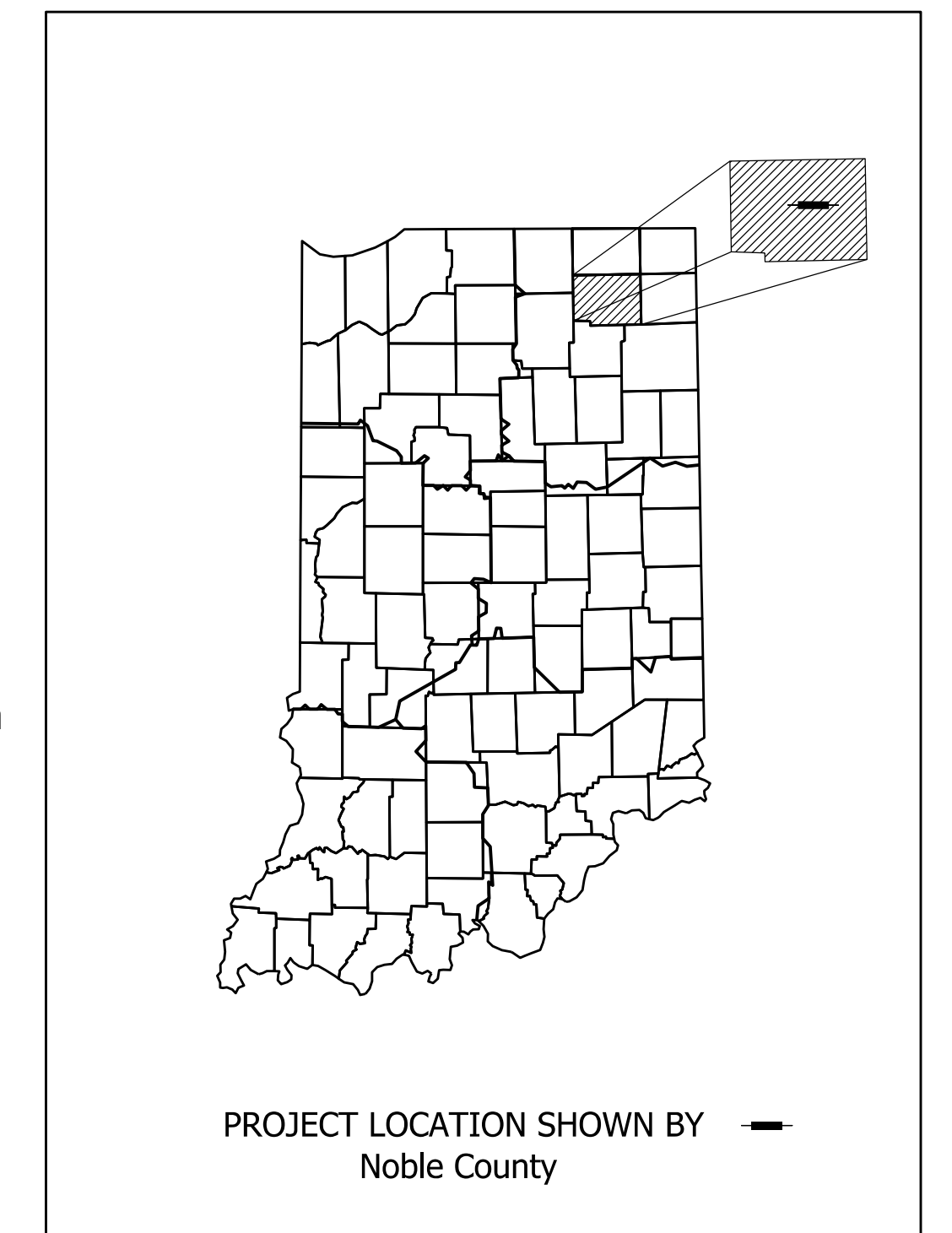
Small Structure Replacement on SR 8 over Unnamed Tributary of Rummel Branch
Located on SR 8, approximately 4.22 Miles E of SR 9
Sections 14 & 23, T34N, R10E, Jefferson Township, Noble County, Indiana

Structure, Reinforced Concrete Box Section
10' x 8' Span Over UNT of Rummel Branch
W/ Waterproofing Membrane &
2' Tall Cutoff Walls at Inlet and Outlet
Skew: 04°00'00" Lt.
C Structure Sta. Line 224+76.00 "A"



| TRAFFIC DATA | | |
|--------------------------|---------------------------|--------------------------|
| A.A.D.T. (2024) | | 4788 V.P.D. |
| A.A.D.T. (2044) | | 5532 V.P.D. |
| D.H.V (2044) | | 535 V.P.H. |
| DIRECTIONAL DISTRIBUTION | EAST 51.28% & WEST 48.72% | |
| TRUCKS | | 8% A.A.D.T. 5% D.H.V. |

| DESIGN DATA | |
|---------------------------|------------------|
| DESIGN SPEED | 55 M.P.H. |
| PROJECT DESIGN CRITERIA | 3R (NON-FREEWAY) |
| FUNCTIONAL CLASSIFICATION | MAJOR COLLECTOR |
| RURAL/URBAN | RURAL |
| TERRAIN | LEVEL |
| ACCESS CONTROL | NONE |



| | |
|-----------------------|-----------------------|
| LATITUDE: 41°23'44"N | LONGITUDE: 85°20'34"W |
| ROADWAY LENGTH: _____ | 0.009 MI. |
| TOTAL LENGTH: _____ | 0.009 MI. |
| MAX. GRADE: _____ | 0.01 % |
| HUC 040500011603 | |

INDIANA DEPARTMENT OF TRANSPORTATION
STANDARD SPECIFICATIONS DATED 2022
TO BE USED WITH THESE PLANS.

2/10/2023 X:\Pco\lects\2021\2161\280350 SR 8 SS 2002234\01 Const\Docs\CAD\Sheet Files\2002234CV01.dgn

CERTIFIED BY: _____ DATE _____
REGISTERED PROFESSIONAL ENGINEER
STATE OF INDIANA NO. 10910597
COVERING OVERALL DESIGN

NOT FOR
CONSTRUCTION
DLZ INDIANA, LLC



PLANS PREPARED BY:
DLZ INDIANA, LLC
2211 East Jefferson Boulevard
South Bend, Indiana 46615
(574) 236-4400

APPROVED FOR LETTING: _____ DATE _____
INDIANA DEPARTMENT OF TRANSPORTATION

| | | |
|----------|------------------|------------------|
| | CULVERT ASSET ID | CV 008-057-47.08 |
| | DESIGNATION | 2002234 |
| | SHEETS | 1 of 15 |
| CONTRACT | PROJECT | R-43287 2002234 |

UTILITIES

FIBER
 Ligtel Communications
 414 S. Calvin St.
 Ligonier, IN 46767
 Bub Durham
 (260) 894-7161
 bdurham@ligtel.net

TELEPHONE
 Frontier
 8001 W. Jefferson Blvd.
 Fort Wayne, IN 46804
 Joe Saril
 (260) 461-3324
 utilitycordreq@ftr.com

NOTE TO REVIEWER:
 Utility Information will be updated
 upon completion of utility coordination
 at Stage 3.



| INDEX | |
|-----------|---------------------------|
| SHEET NO. | SUBJECT |
| 1 | TITLE |
| 2 | INDEX |
| 3 | TYPICAL SECTIONS |
| 4 | PLAT NO. 1 |
| 5 | MAINTENANCE OF TRAFFIC |
| 6-7 | PLAN AND PROFILE LINE "A" |
| 8 | MISCELLANEOUS TABLES |
| 9-15 | CROSS SECTIONS |

REVISIONS

| SHEET NO. | DATE | REVISED |
|-----------|------|---------|
| | | |
| | | |
| | | |
| | | |
| | | |
| | | |
| | | |
| | | |
| | | |
| | | |
| | | |
| | | |
| | | |

Z:\10\2023 X:\Projects\2021\2161\280350 SR 6 SS 2002234\01_ConstrDocs\CAD\Sheet Files\2002234\IS01.dgn



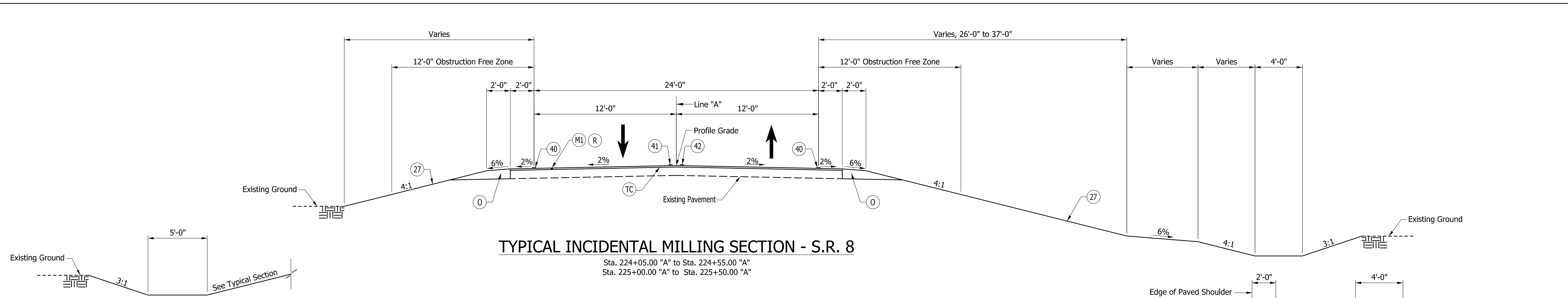
**NOT FOR
 CONSTRUCTION**
 DLZ INDIANA, LLC

| | | |
|--------------------------------|-----------------------|------------|
| RECOMMENDED FOR APPROVAL _____ | DESIGN ENGINEER _____ | DATE _____ |
| DESIGNED: CJD 2/2023 | DRAWN: DPH 2/2023 | |
| CHECKED: JFM 2/2023 | CHECKED: CJD 2/2023 | |

INDIANA
 DEPARTMENT OF TRANSPORTATION

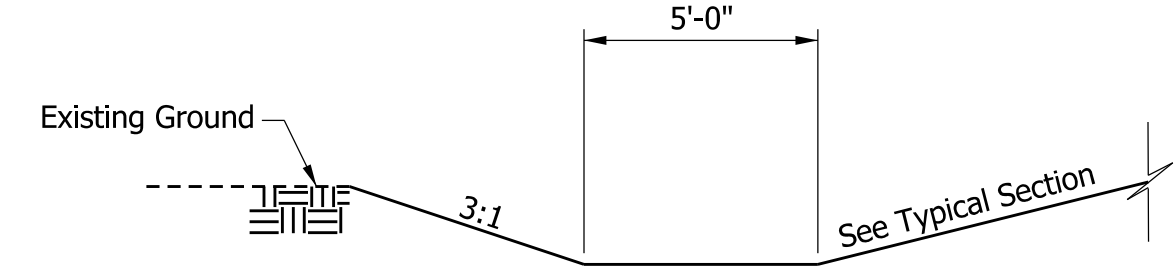
INDEX

| | |
|---------------------|--------------------------------------|
| SCALE NONE | CULVERT ASSET ID CV 008-057-47.08 |
| | DESIGNATION 2002234 |
| | SHEETS 2 of 15 |
| CONTRACT R-43287 | PROJECT 2002234 |



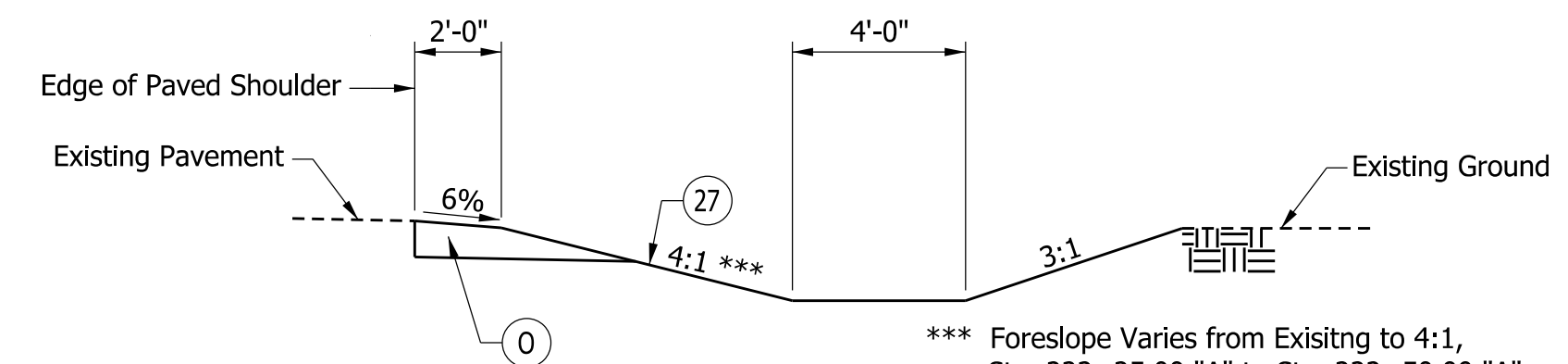
TYPICAL INCIDENTAL MILLING SECTION - S.R. 8

Sta. 224+05.00 "A" to Sta. 224+55.00 "A"
Sta. 225+00.00 "A" to Sta. 225+50.00 "A"



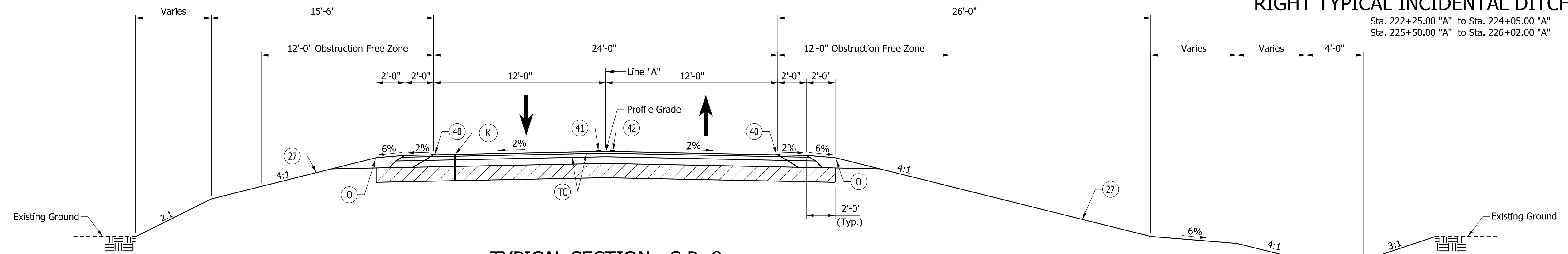
LEFT DITCH DETAIL

Sta. 224+79.00 "A" to Sta. 227+27.00 "A"



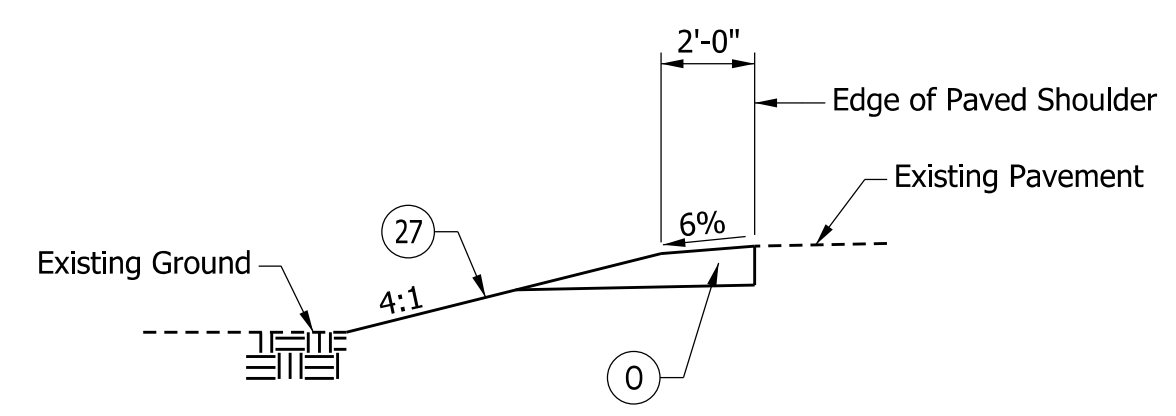
RIGHT TYPICAL INCIDENTAL DITCH GRADING

Sta. 222+25.00 "A" to Sta. 224+05.00 "A"
Sta. 225+50.00 "A" to Sta. 226+02.00 "A"



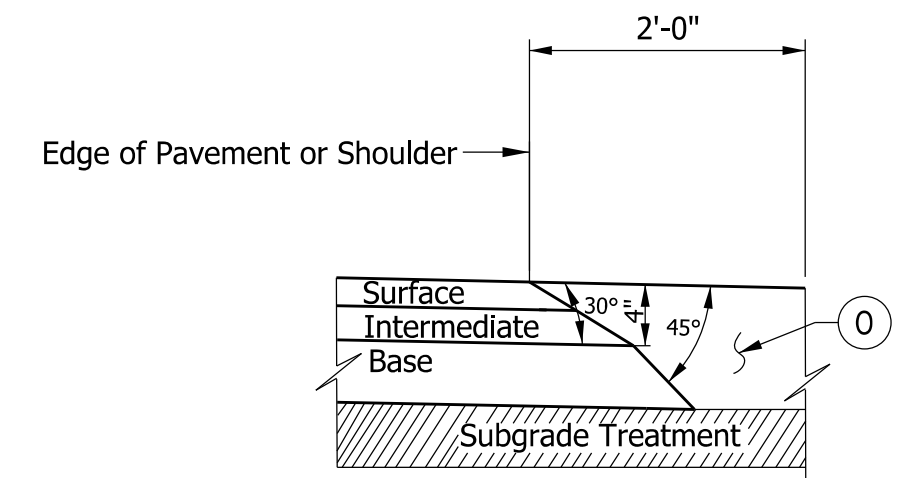
TYPICAL SECTION - S.R. 8

Sta. 224+55.00 "A" to Sta. 225+00.00 "A"



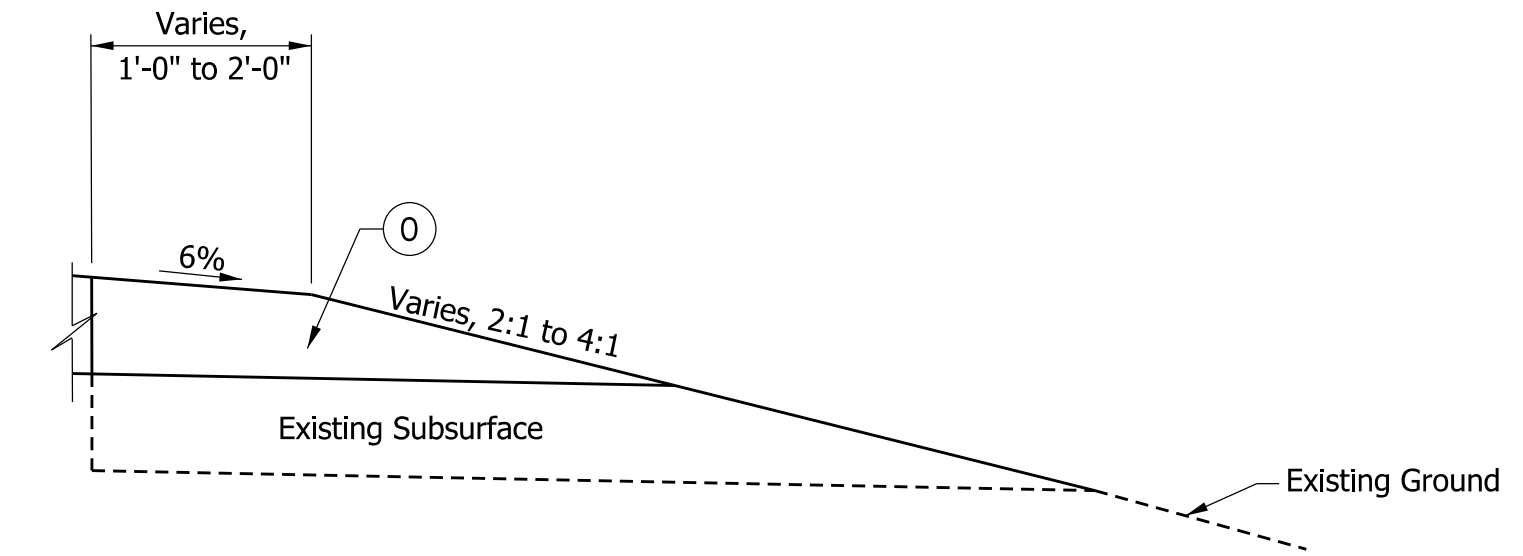
LEFT TYPICAL INCIDENTAL GRADING

Sta. 223+70.00 "A" to Sta. 224+05.00 "A"
Sta. 225+50.00 "A" to Sta. 227+02.00 "A"



SAFETY EDGE DETAIL

Scale: None



TAPER EDGE DETAIL

Scale: None

Sta. 223+50.00 "A" to Sta. 223+70.00 "A", Lt.
Sta. 222+25.00 "A" to Sta. 222+50.00 "A", Rt.
Sta. 227+02.00 "A" to Sta. 227+27.00 "A", Lt.
Sta. 225+82.00 "A" to Sta. 226+02.00 "A", Rt.

LEGEND:

- (K) 165#/SYD QC/QA-HMA, 3, 64, Surface, 9.5 mm, on 275#/SYD QC/QA-HMA, 3, 64, Intermediate, 19.0 mm, on 660#/SYD QC/QA-HMA, 3, 64, Base, 25.0 mm, on Subgrade treatment Type IC on Geotextile for Pavement, Type 2B
- (O) Variable Depth Compacted Aggregate, No. 53
- (M1) Transition Milling
- (R) 165 #/SYD QC/QA-HMA, 3, 64, Surface, 9.50mm
- (TC) Asphalt for Tack Coat
- (27) Mulched Seeding, R
- (40) Line, Paint, Solid, White, 6"
- (41) Line, Paint, Broken, Yellow, 6"
- (42) Line, Paint, Solid, Yellow, 6"

NOTES:

1. All Pavements Shall have a Safety Edge Installed at the Edge of the Pavement or Shoulder.
2. For Each Lane of Traffic, the Intermediate Layer should be Placed Simultaneously for Mainline and Adjacent Shoulder.
3. For Each Lane of Traffic the Surface Layer should be Placed Simultaneously for Mainline and Adjacent Shoulder.
4. After milling the existing pavement surface, any cracks that remain visible with 0.25 inch width or greater shall be sealed before applying tack coat to the milled surface. The materials used to fill the cracks shall be PG 64-22 only ; no emulsion should be used. The sealed cracks should not be overbanded.

2/10/2023 X:\Projects\2021\12161280350 SR 8 SS 2002234\01_ConstrDocs\CAD\Sheet Files\2002234Typ01.dgn

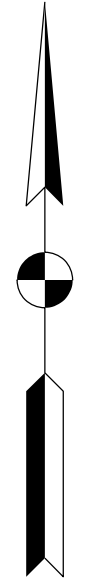


NOT FOR CONSTRUCTION
DLZ INDIANA, LLC

| | | |
|--------------------------|---------------------|------|
| RECOMMENDED FOR APPROVAL | DESIGN ENGINEER | DATE |
| DESIGNED: CJD 2/2023 | DRAWN: DPH 2/2023 | |
| CHECKED: JFM 2/2023 | CHECKED: CJD 2/2023 | |

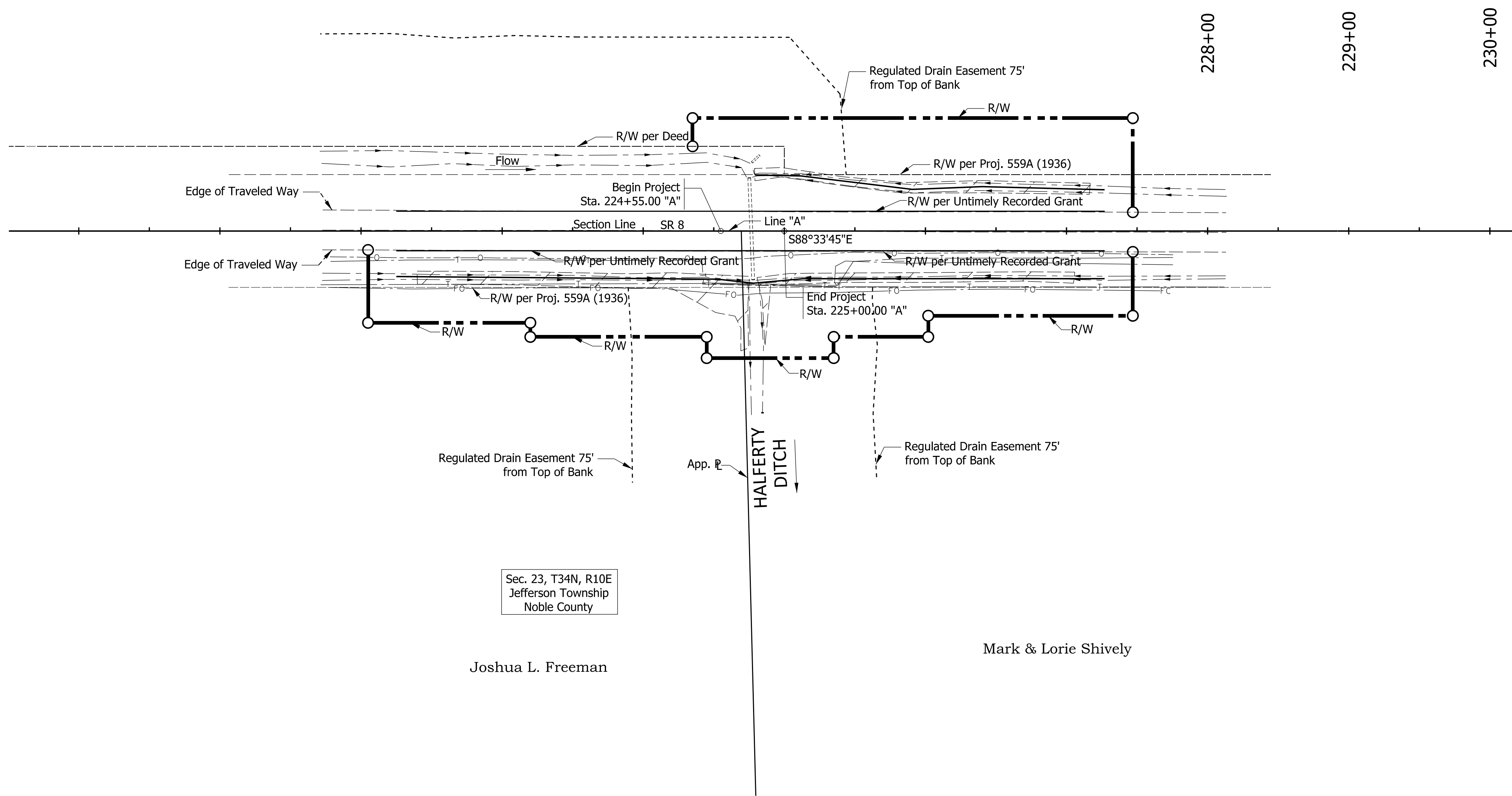
| | |
|--------------------------------------|--|
| INDIANA DEPARTMENT OF TRANSPORTATION | |
| TYPICAL SECTIONS | |

| | |
|----------|------------------|
| SCALE | CULVERT ASSET ID |
| NONE | CV 008-057-47.08 |
| | DESIGNATION |
| | 2002234 |
| SHEETS | |
| 3 | of 15 |
| CONTRACT | PROJECT |
| R-43287 | 2002234 |



Sec. 14, T34N, R10E
Jefferson Township
Noble County

John W. & Stacy L. Haas



Sec. 23, T34N, R10E
Jefferson Township
Noble County

Joshua L. Freeman

Mark & Lorie Shively

2/10/2023 X:\Projects\2021\2161\280350 SR 8 SS 2002234\01_ConstrDocs\CAD\Sheet Files\2002234\Plat01.dgn



NOT FOR CONSTRUCTION
DLZ INDIANA, LLC

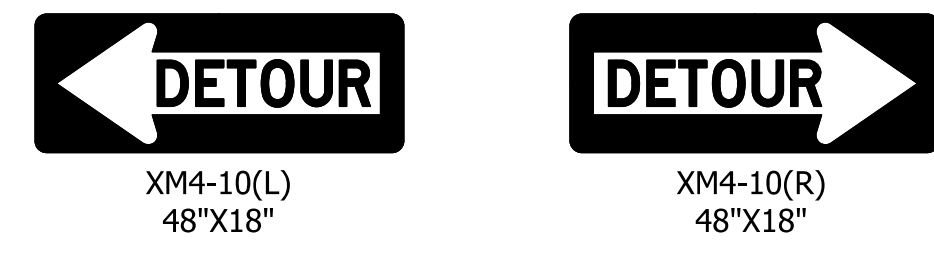
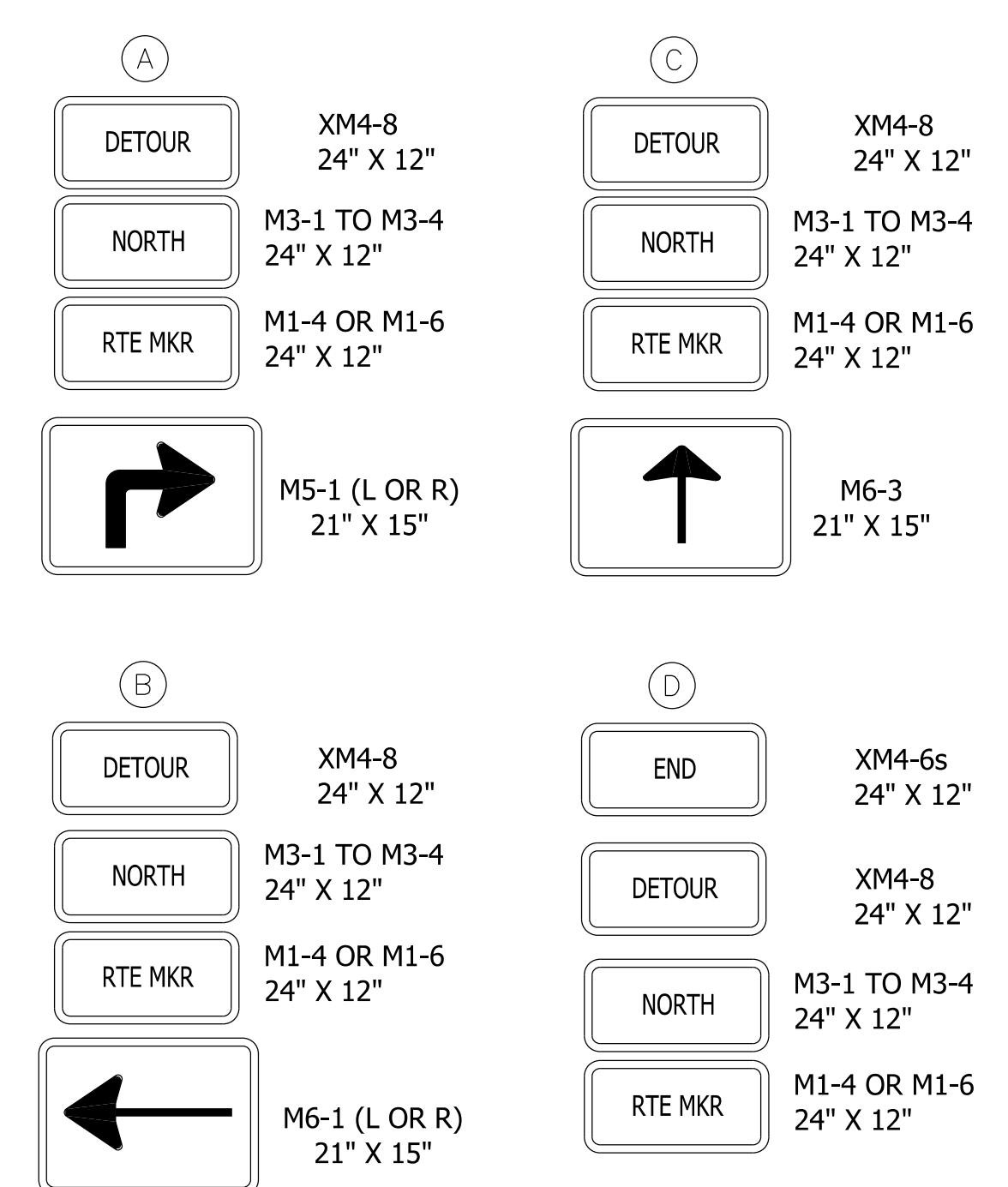
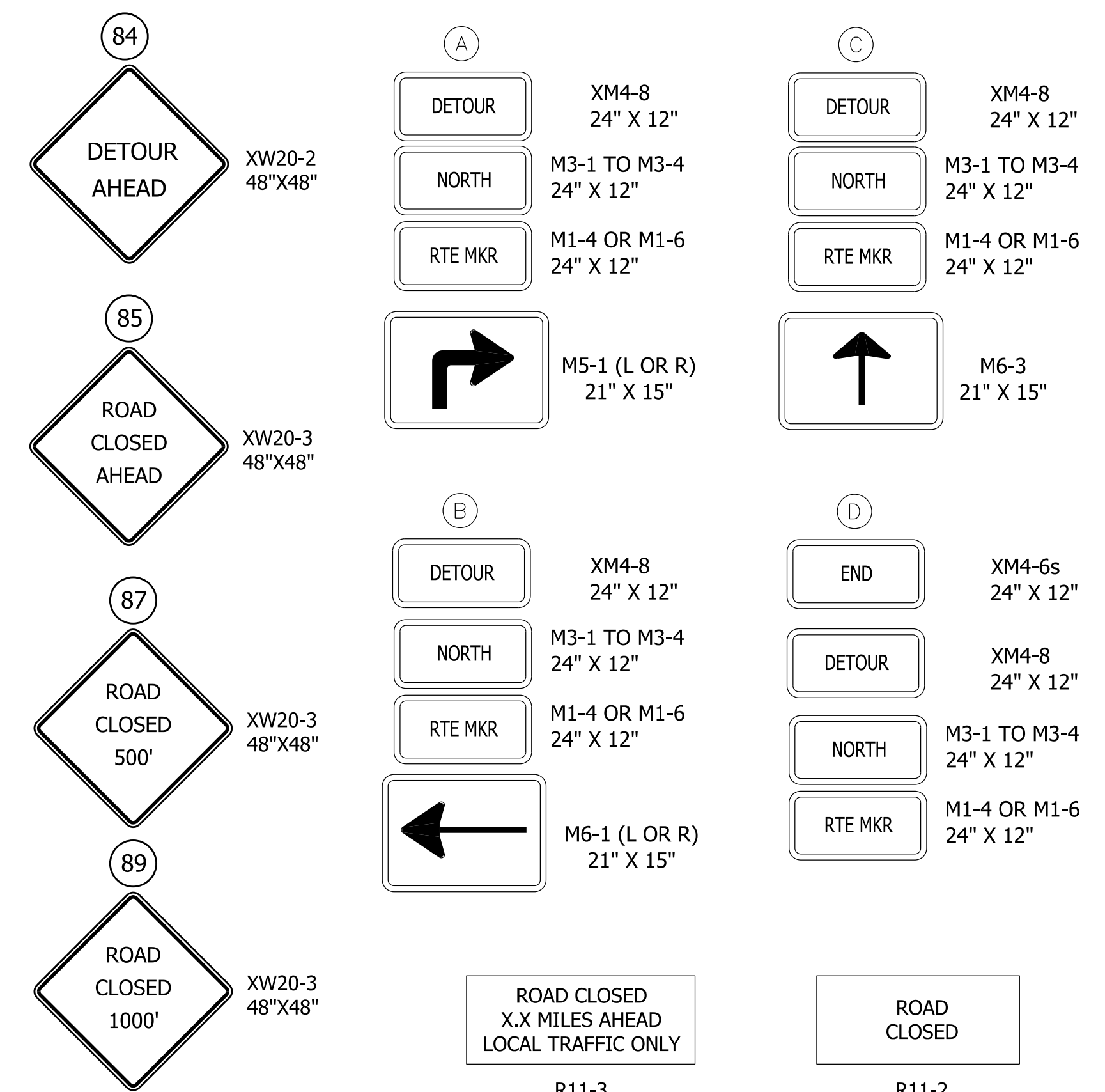
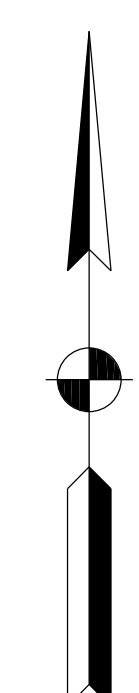
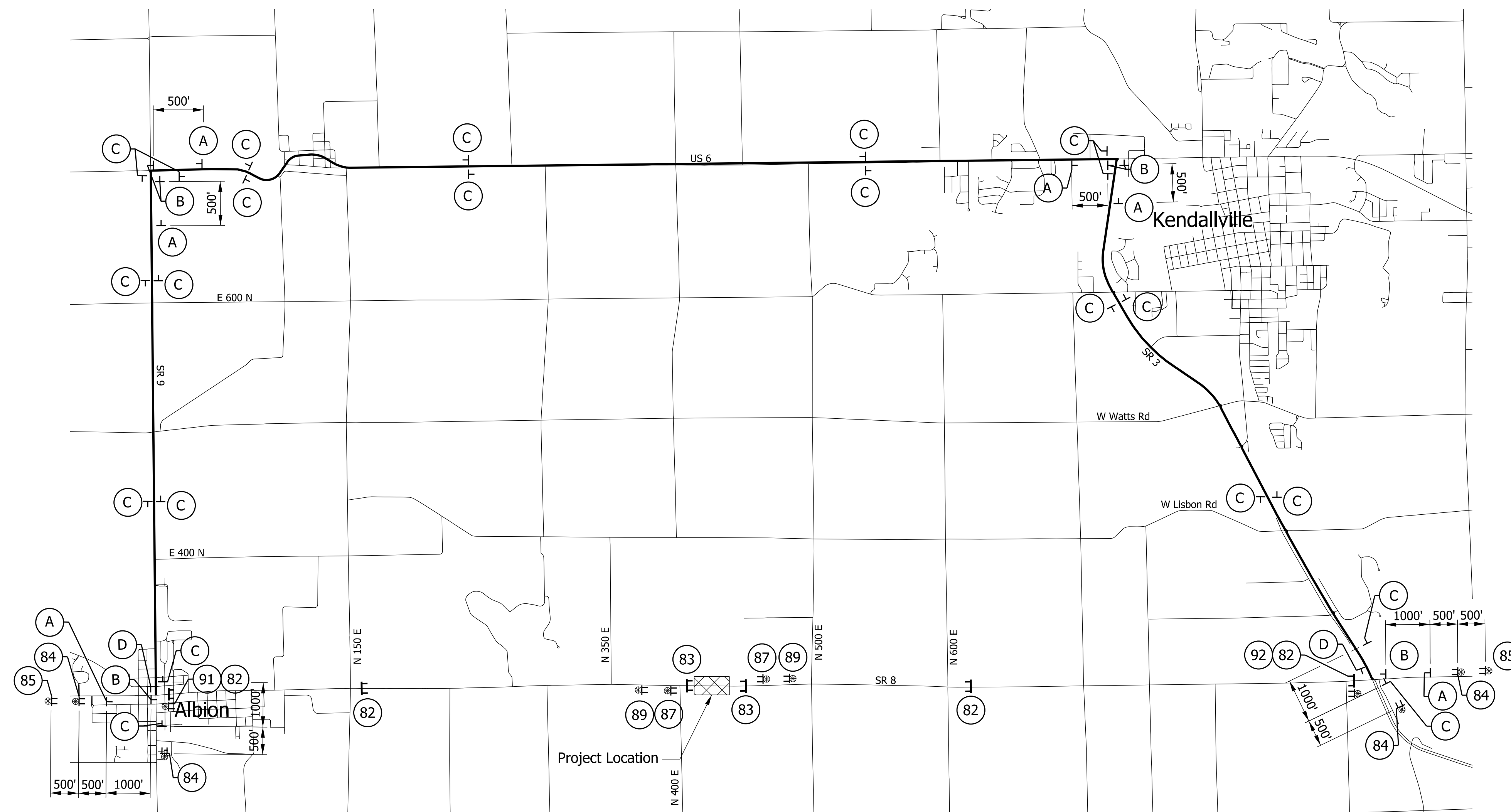
| | | |
|--------------------------|---------------------|------|
| RECOMMENDED FOR APPROVAL | DESIGN ENGINEER | DATE |
| DESIGNED: CJD 2/2023 | DRAWN: DPH 2/2023 | |
| CHECKED: JFM 2/2023 | CHECKED: CJD 2/2023 | |

INDIANA
DEPARTMENT OF TRANSPORTATION

PLAT NO. 1

| | |
|---------------------|--------------------------------------|
| SCALE 1"=50' | CULVERT ASSET ID CV 008-057-47.08 |
| | DESIGNATION 2002234 |
| | SHEETS 4 of 15 |
| CONTRACT R-43287 | PROJECT 2002234 |

2/10/2023 X:\Projects\2021\12161280350 SR 8 SS 2002234\01_ConstrDocs\CAD\Sheet Files\2002234\MT01.dgn



| CONSTRUCTION SIGN SCHEDULE | |
|------------------------------|---------|
| ITEM | TOTALS |
| Type 'A' Sign | |
| XW20-2 | 4 Each |
| XW20-3 | 6 Each |
| R11-2 | 2 Each |
| R11-3 | 4 Each |
| Total Type 'A' Sign | 16 Each |
| Type 'B' Sign | |
| XM4-10L | 1 Each |
| XM4-10R | 1 Each |
| Total Type 'B' Sign | 2 Each |
| Detour Route Marker Assembly | 36 Each |
| Road Closed Sign Assembly | 6 Each |
| Type III-B Barricade | 96 LFT |

| SIGN LEGEND | | |
|----------------|-------------------------------------|----------------|
| SIGN | DESCRIPTION | SIZE (in x in) |
| R11-2 | "Road Closed" Sign | 48 X 30 |
| R11-4 | "Road Closed ___ Miles Ahead" Sign | 60 X 30 |
| XW20-2 | "Detour Ahead" Sign | 48 X 48 |
| XW20-3 | "Road Closed ___" Sign | 48 X 48 |
| XM4-10(R OR L) | "Detour" (Inside Orange Arrow) Sign | 48 X 18 |

- LEGEND**
- (82) Road Closure Sign Assembly with R11-3 and 12 LFT Type III-B Barricade
 - (83) Road Closure Sign Assembly with R11-2 and 24 LFT Type III-B Barricade
 - (84) XW20-2 "Detour Ahead" Sign
 - (85) XW20-3 "Road Closed Ahead" Sign
 - (87) XW20-3 "Road Closed 500 ft" Sign
 - (89) XW20-3 "Road Closed 1000 ft" Sign
 - (91) XM4-10L "Detour Arrow Left" Symbol
 - (92) XM4-10R "Detour Arrow Right" Symbol
 - (A) Advance Turn Detour Route Marker Assembly with M3-2 Plaque
 - (B) Directional Detour Route Marker Assembly with M3-2 Plaque
 - (C) Confirming Detour Route Marker Assembly
 - (D) End Detour Route Marker Assembly
 - TT Construction Sign
 - ⊗ Type 'A' Construction Warning Light
 - ⊥ Type III-B Barricade
 - ⊠ Area Under Construction
 - Detour Route
 - ⊕ Route Marker Assembly

- NOTES**
- All signs, barricades, and pavement markings shall conform to the Indiana Manual on Traffic Control Devices for Streets and Highways, 2011 and any current supplements thereto.
 - Contractor shall maintain access to all commercial and private properties during construction.



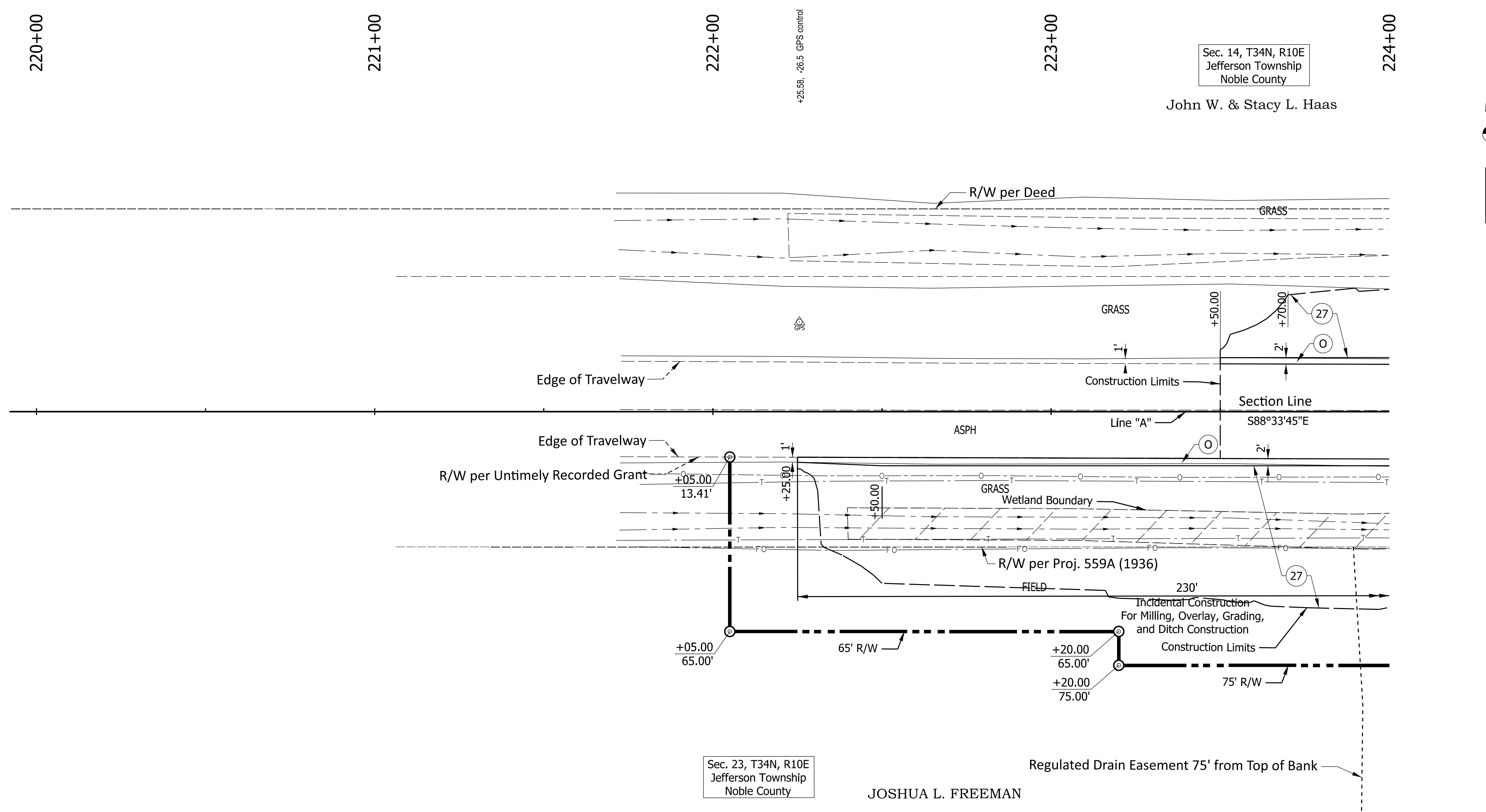
NOT FOR CONSTRUCTION
DLZ INDIANA, LLC

| | | |
|--------------------------|---------------------|------|
| RECOMMENDED FOR APPROVAL | DESIGN ENGINEER | DATE |
| DESIGNED: CJD 2/2023 | DRAWN: DPH 2/2023 | |
| CHECKED: JFM 2/2023 | CHECKED: CJD 2/2023 | |

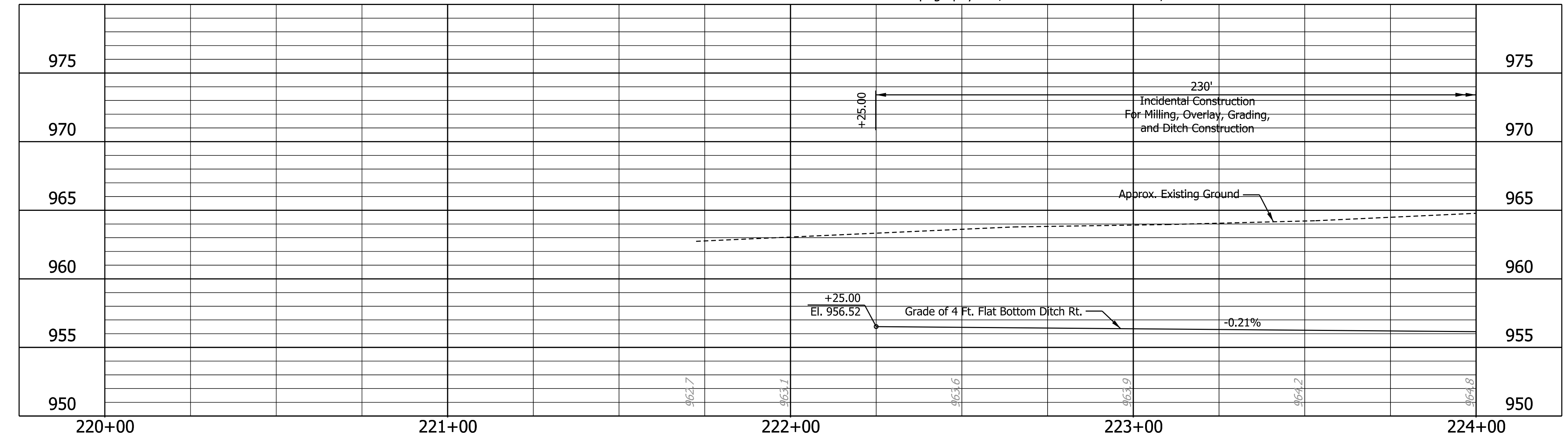
INDIANA DEPARTMENT OF TRANSPORTATION
MAINTENANCE OF TRAFFIC

| | |
|---------------------|--------------------------------------|
| SCALE 1"=3000' | CULVERT ASSET ID CV 008-057-47.08 |
| | DESIGNATION 2002234 |
| | SHEETS 5 of 15 |
| CONTRACT R-43287 | PROJECT 2002234 |

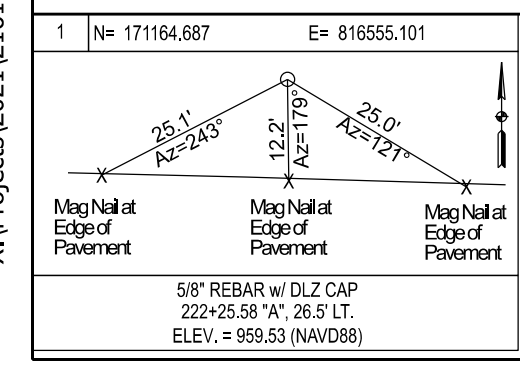
2/10/2023
 X:\Projects\2021\12161\280350 SR 6 SS 2002234\01_Constr\Drawings\CAD\Sheet Files\2002234\APP01.dgn



All Topography & R/W Described from Line "A", Unless Noted Otherwise. Line "A" to Be Constructed.



- LEGEND:**
- Variable Depth Compacted Aggregate, No. 53
 - Mulched Seeding, R
 - Existing Wetlands



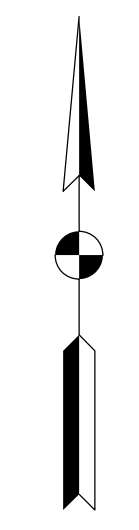
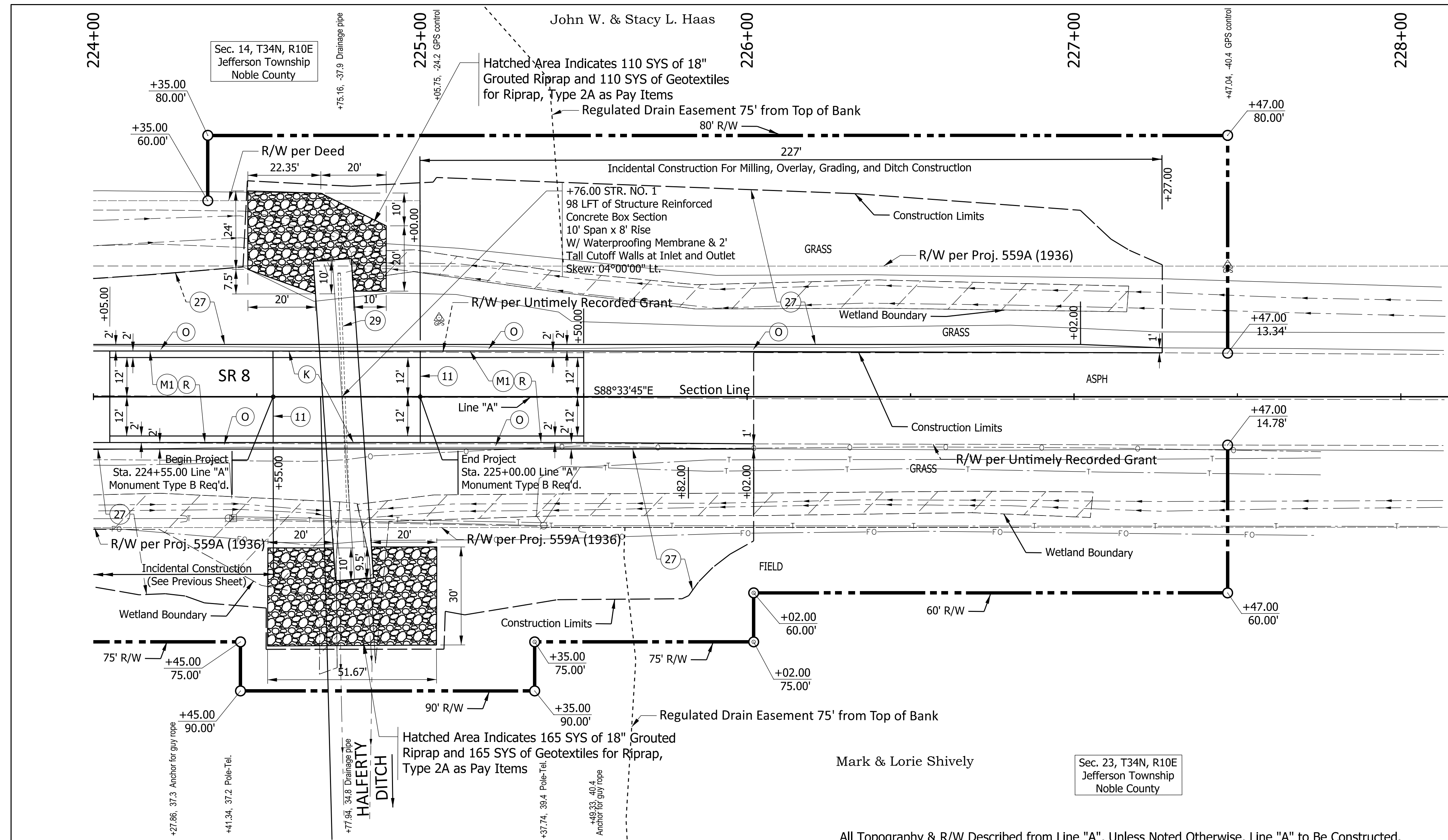
NOT FOR CONSTRUCTION
 DLZ INDIANA, LLC

| | | |
|--------------------------|---------------------|------|
| RECOMMENDED FOR APPROVAL | DESIGN ENGINEER | DATE |
| DESIGNED: CJD 2/2023 | DRAWN: DPH 2/2023 | |
| CHECKED: JFM 2/2023 | CHECKED: CJD 2/2023 | |

INDIANA DEPARTMENT OF TRANSPORTATION

PLAN AND PROFILE LINE "A"

| | |
|------------------|------------------|
| HORIZONTAL SCALE | CULVERT ASSET ID |
| 1"=20' | CV 008-057-47.08 |
| VERTICAL SCALE | DESIGNATION |
| 1"=5' | 2002234 |
| | SHEETS |
| | 6 of 15 |
| CONTRACT | PROJECT |
| R-43287 | 2002234 |



NOTE TO REVIEWER:
EARTHWORK SUMMARY TABLE
DEWATERING PLAN, AND CONTOURS
FOR THE RIPRAP
WILL BE PROVIDED AT STAGE 3

| EARTHWORK SUMMARY TABLE | |
|----------------------------|-----|
| COMMON EXCAVATION | |
| LINE "A" | CYS |
| TOTAL COMMON EXCAVATION | CYS |
| Unusable Excavation | CYS |
| Usable Excavation | CYS |
| FILL | |
| LINE "PRA" | CYS |
| SWELL (25%) | CYS |
| FILL | CYS |
| TOTAL BORROW | CYS |
| Structure Backfill, Type 1 | CYS |
| Structure Backfill, Type 2 | CYS |
| Structure Backfill, Type 5 | CYS |

HYDRAULIC DATA

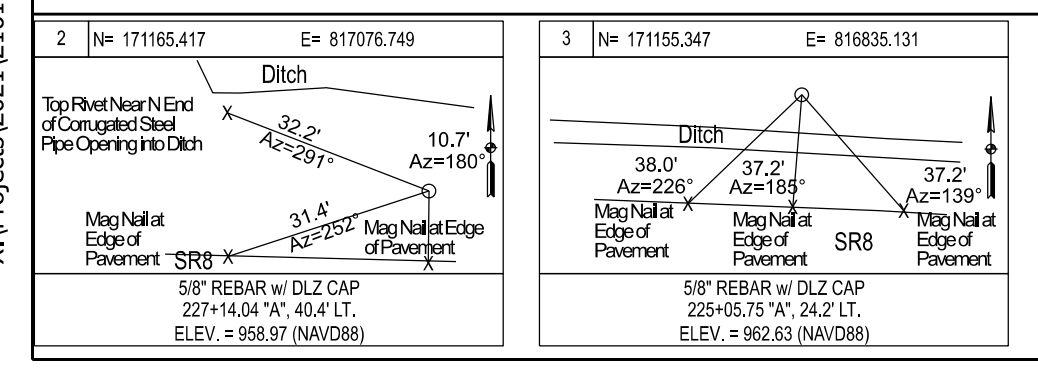
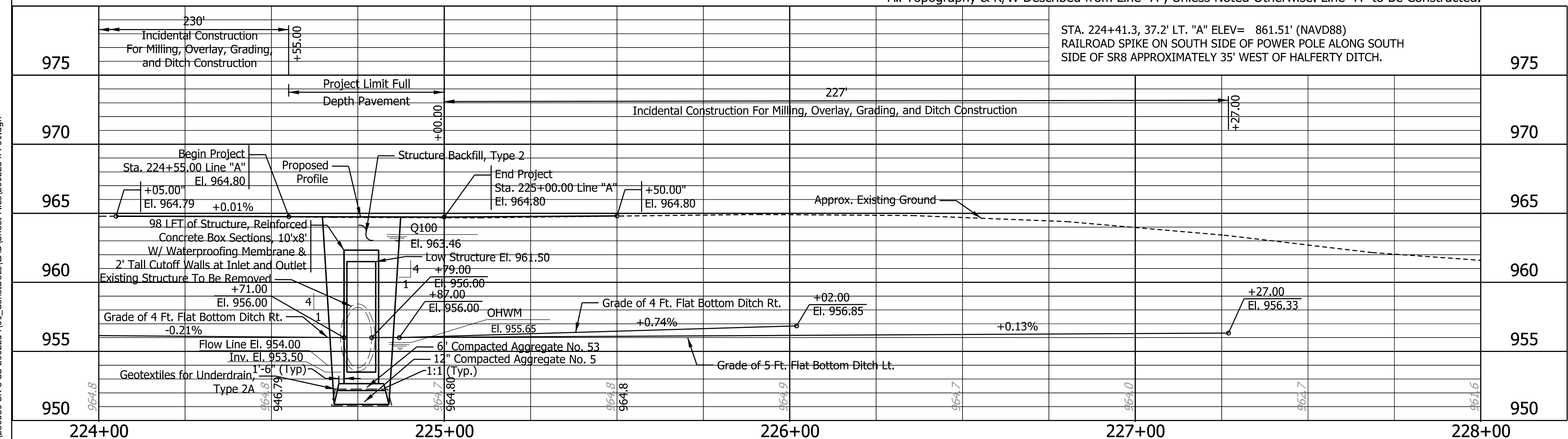
| | |
|--|-----------------|
| Drainage Area | = 6.25 sq. mi. |
| Design Discharge Q100 | = 470 cfs |
| Outlet Velocity @ Q50 | = 5.76 ft/s |
| Natural Channel Velocity @ Q50 | = 1.69 ft/s |
| Q100 Elevation | = 963.46 ft. |
| Backwater at Q100 | = 0.56 ft. |
| Waterway Opening Provided Below Q100 El. | = 74.19 sq. ft. |
| Proposed Low Structure | = 961.50 ft. |
| Skew | = 4°00'00" Lt. |
| Existing Waterway Opening Below Q100 El. | = 10.18 sq.ft |
| Existing Low Structure | = 957.59 ft. |
| Existing Backwater | = 2.71 ft. |

GENERAL NOTES FOR STR. NO. 1:

- Present Structure at Proposed Site to be Removed.
- Allowable Factored Soil Bearing Resistance for Footing is 2,500 psf.
- For Additional Scour Protection Details, see INDOT Standard Drawing E 714-BCSP-01
- Contractor Shall Verify the Existing Flow Line Elevation to Set the Appropriate Sump Depth.
- A Waterproofing Membrane shall be applied to the structure in accordance with 714.11.
- Waterproofing shall be placed on all vertical and top surfaces.
- In order to fully comply with RSP section 714.11 (b), the membrane shall not be damaged when backfill is placed.
- The top joints shall be filled with a non-shrink grout in accordance with 707.09 and ASTM C1107.

LEGEND:

- (K) 165#/SYD QC/QA-HMA, 3, 64, Surface, 9.5 mm, on 275#/SYD QC/QA-HMA, 3, 64, Intermediate, 19.0 mm, on 660#/SYD QC/QA-HMA, 3, 64, Base, 25.0 mm, on Subgrade Treatment Type IC, On Geotextile for Pavement, Type 2B
- (M1) Transition Milling
- (R) 165#/SYD QC/QA-HMA, 3, 64, Surface, 9.5 mm
- (O) Variable Depth Compacted Aggregate, No. 53
- (11) Sawcut
- (27) Mulched Seeding, R
- (29) Remove
- [Hatched] Existing Wetlands



NOT FOR CONSTRUCTION
 DLZ INDIANA, LLC

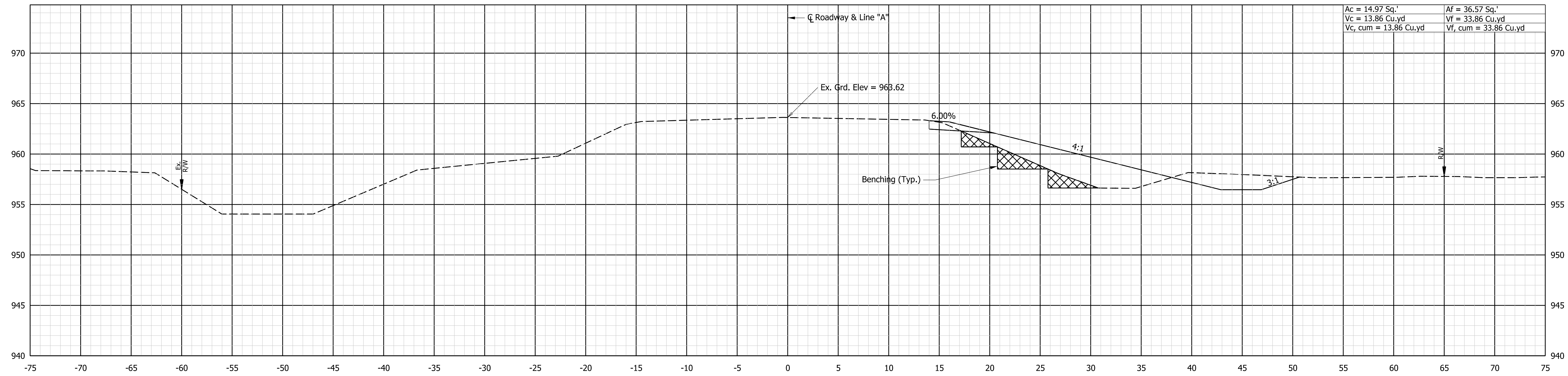
| RECOMMENDED FOR APPROVAL | DESIGN ENGINEER | DATE |
|--------------------------|-----------------|---------------------|
| DESIGNED: CJD | 2/2023 | DRAWN: DPH 2/2023 |
| CHECKED: JFM | 2/2023 | CHECKED: CJD 2/2023 |

INDIANA DEPARTMENT OF TRANSPORTATION
PLAN AND PROFILE LINE "A"

| HORIZONTAL SCALE | CULVERT ASSET ID |
|------------------|------------------|
| 1"=20' | CV 008-057-47.08 |
| VERTICAL SCALE | DESIGNATION |
| 1"=5' | 2002234 |
| SHEETS | |
| 7 | of 15 |
| CONTRACT | PROJECT |
| R-43287 | 2002234 |

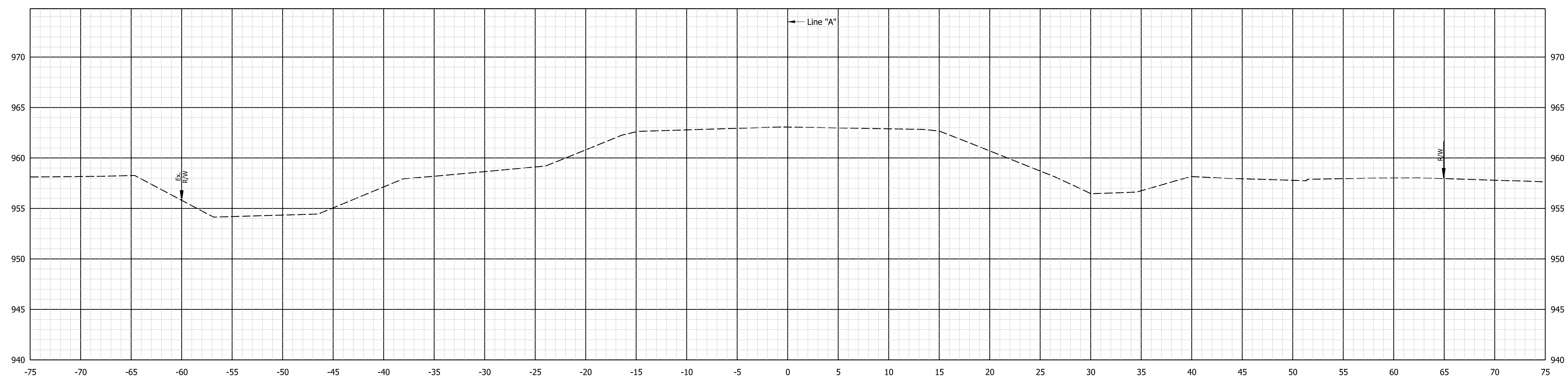
2/10/2023 X:\Projects\2021\12161280350 SR 8 SS 2002234\01_Cons\Drawings\CAD\Sheet Files\2002234\APP01.dgn

| | |
|-----------------------|-----------------------|
| Ac = 14.97 Sq.' | Af = 36.57 Sq.' |
| Vc = 13.86 Cu.yd | Vf = 33.86 Cu.yd |
| Vc, cum = 13.86 Cu.yd | Vf, cum = 33.86 Cu.yd |



222+50.00

Begin Incidental Construction Sta. 222+25.00 Line "A"



222+05.00

2/10/2023 X:\Projects\2021\2161\280350 SR & SS 2002234\01_ConstrDocs\CAD\Sheet Files\2002233X_Sec01.dgn

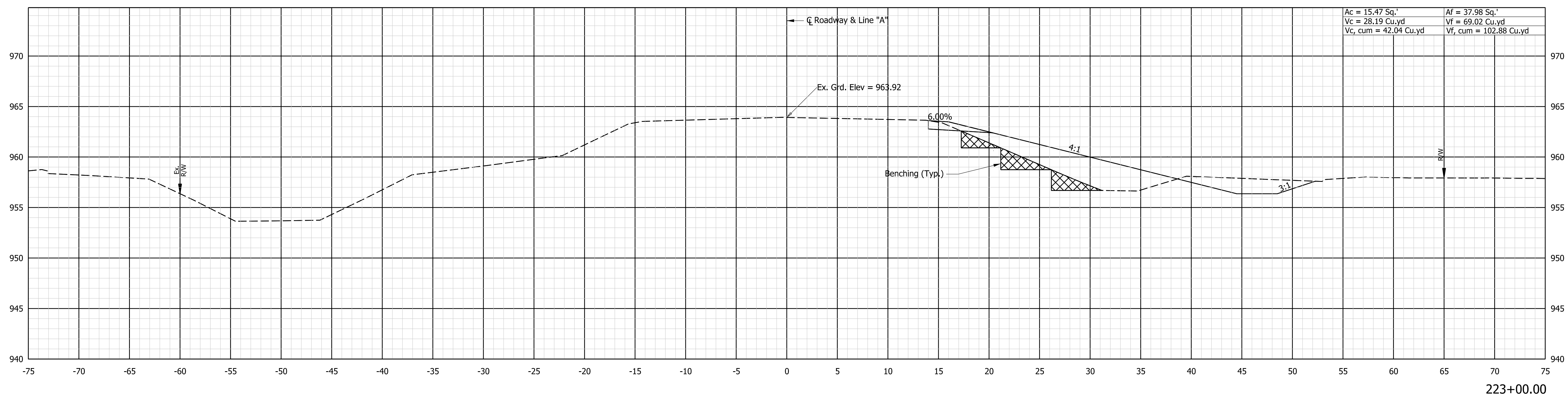
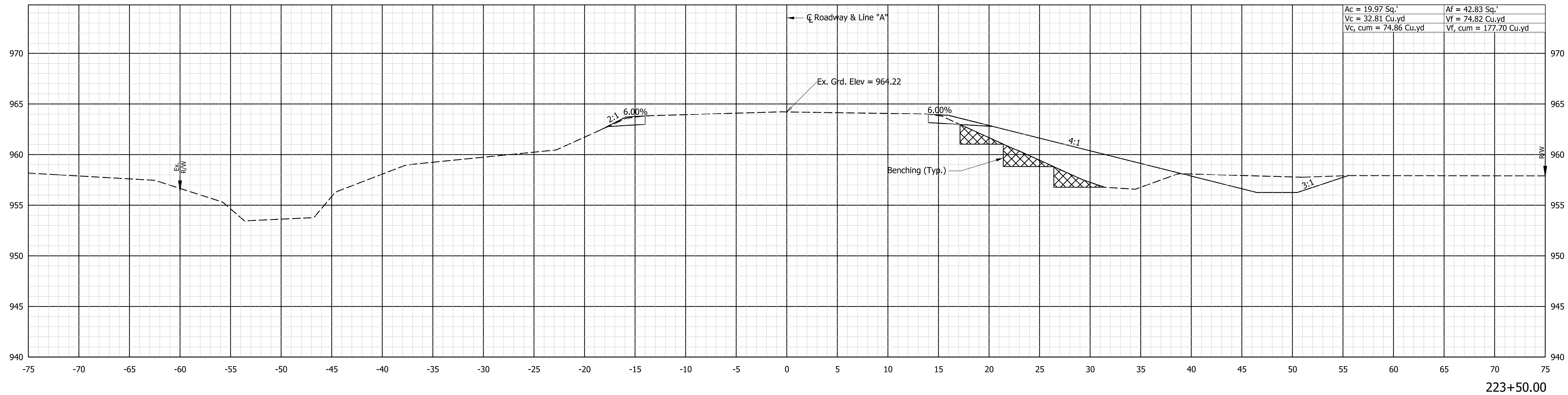


NOT FOR CONSTRUCTION
DLZ INDIANA, LLC

| | | |
|--------------------------|---------------------|------|
| RECOMMENDED FOR APPROVAL | DESIGN ENGINEER | DATE |
| DESIGNED: CJD 2/2023 | DRAWN: DPH 2/2023 | |
| CHECKED: JFM 2/2023 | CHECKED: CJD 2/2023 | |

INDIANA DEPARTMENT OF TRANSPORTATION
CROSS SECTIONS LINE "A"

| | |
|---------------------|--------------------------------------|
| SCALE 1"=5' | CULVERT ASSET ID CV 008-057-47.08 |
| | DESIGNATION 2002234 |
| | SHEETS 9 of 15 |
| CONTRACT R-43287 | PROJECT 2002234 |



2/10/2023
 X:\Projects\2021\2161\280350 SR & SS 2002234\01_ConstrDocs\CAD\Sheet Files\2002233X_Sec01.dgn



NOT FOR
 CONSTRUCTION
 DLZ INDIANA, LLC

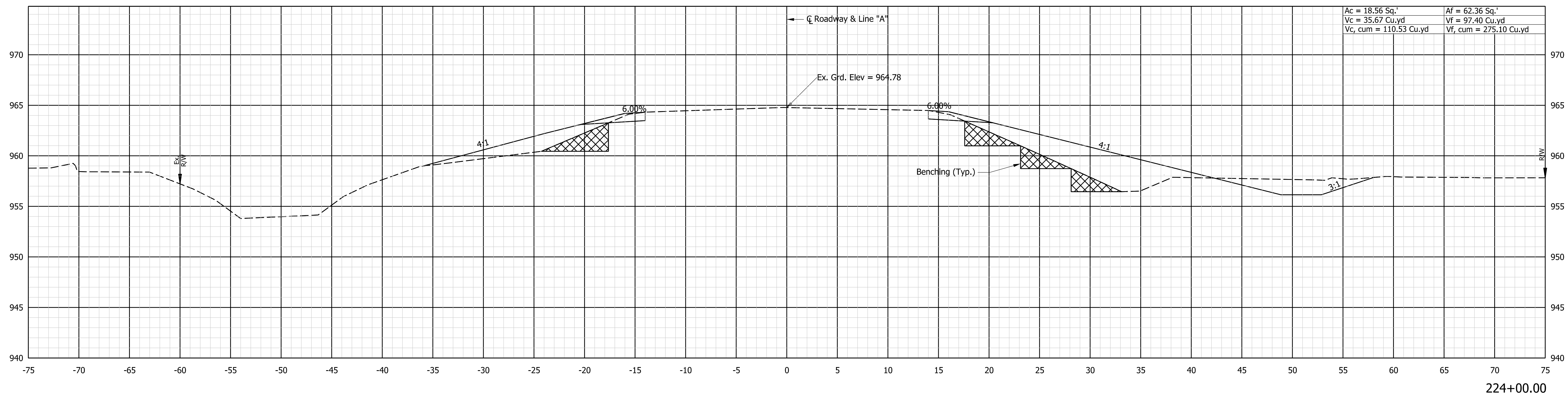
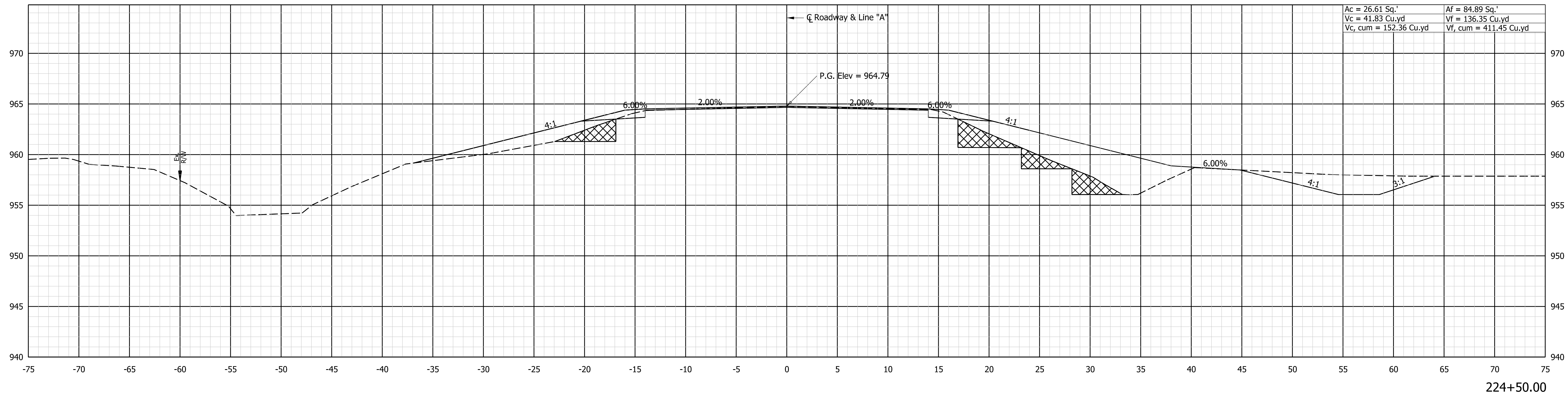
| | | |
|--------------------------|-----------------|--------------|
| RECOMMENDED FOR APPROVAL | DESIGN ENGINEER | DATE |
| DESIGNED: CJD | 2/2023 | DRAWN: DPH |
| 2/2023 | | 2/2023 |
| CHECKED: JFM | 2/2023 | CHECKED: CJD |
| | | 2/2023 |

INDIANA
 DEPARTMENT OF TRANSPORTATION

CROSS SECTIONS
 LINE "A"

| | |
|----------|------------------|
| SCALE | CULVERT ASSET ID |
| 1"=5' | CV 008-057-47.08 |
| | DESIGNATION |
| | 2002234 |
| | SHEETS |
| | 10 of 15 |
| CONTRACT | PROJECT |
| R-43287 | 2002234 |

Begin Project Sta. 224+55.00 Line "A"



2/10/2023 X:\Projects\2021\2161\280350 SR & SS 2002234\01_ConstrDocs\CAD\Sheet Files\2002233X_Sec01.dgn



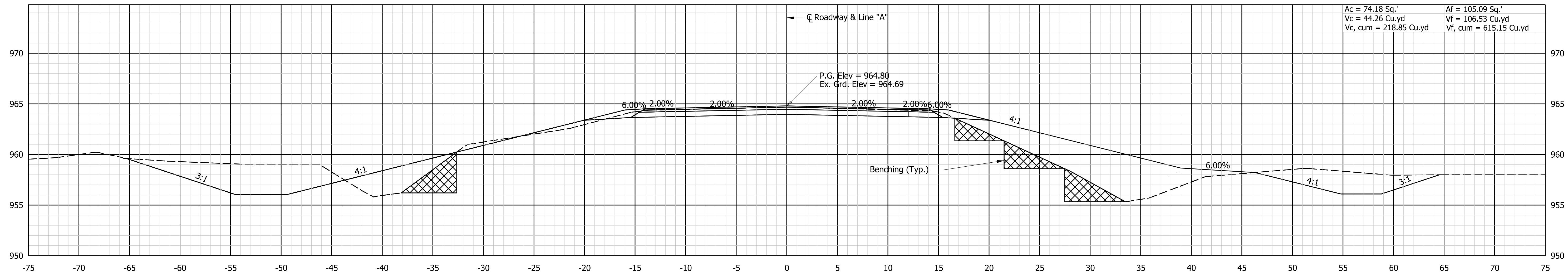
NOT FOR CONSTRUCTION
DLZ INDIANA, LLC

| | | |
|--------------------------|---------------------|------|
| RECOMMENDED FOR APPROVAL | DESIGN ENGINEER | DATE |
| DESIGNED: CJD 2/2023 | DRAWN: DPH 2/2023 | |
| CHECKED: JFM 2/2023 | CHECKED: CJD 2/2023 | |

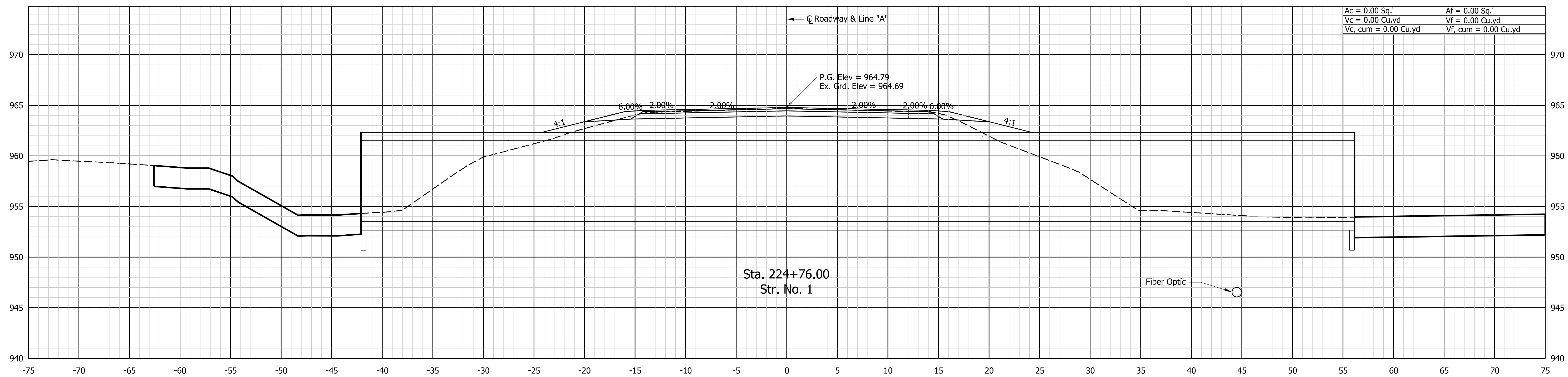
INDIANA DEPARTMENT OF TRANSPORTATION

CROSS SECTIONS LINE "A"

| | |
|---------------------|--------------------------------------|
| SCALE 1"=5' | CULVERT ASSET ID CV 008-057-47.08 |
| | DESIGNATION 2002234 |
| | SHEETS 11 of 15 |
| CONTRACT R-43287 | PROJECT 2002234 |



End Project Sta. 225+00.00 Line "A"



Sta. 224+76.00
Str. No. 1

2/10/2023 X:\Projects\2021\12161\280350 SR & SS 2002234\01_ConstrDocs\CAD\Sheet Files\2002233X_Sec01.dgn



NOT FOR CONSTRUCTION
DLZ INDIANA, LLC

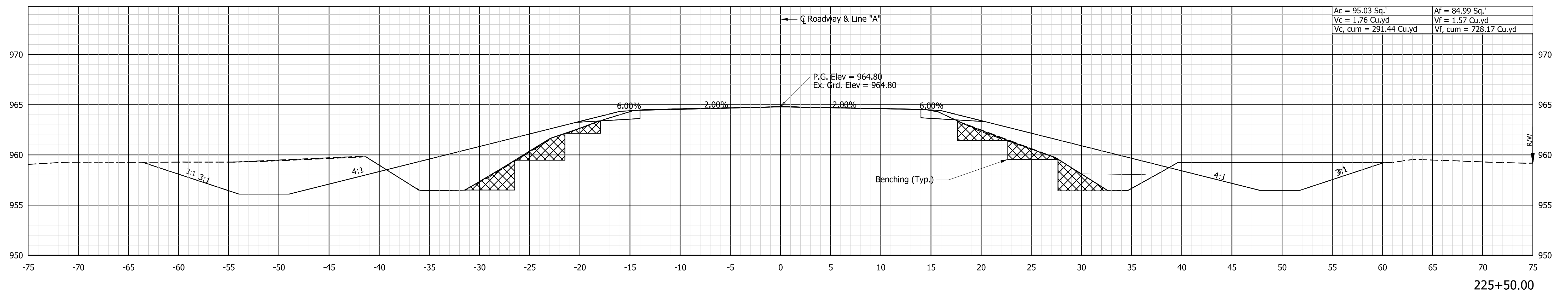
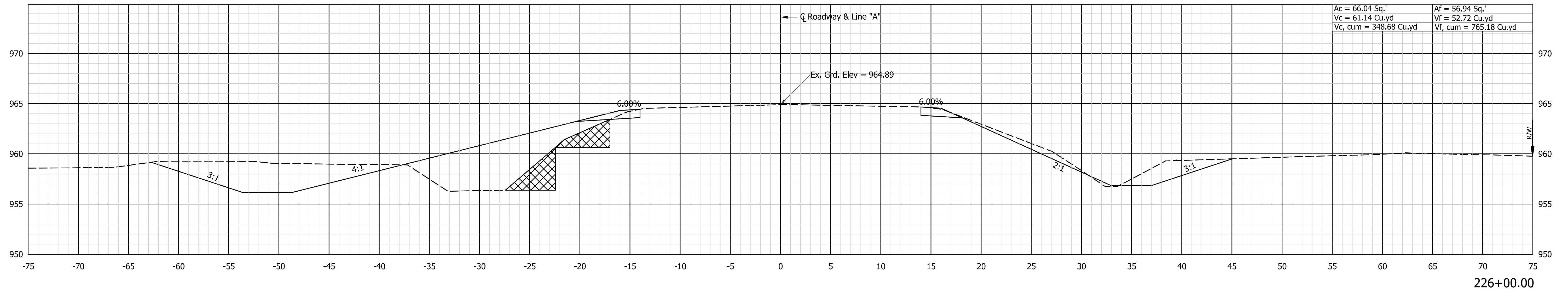
| | | |
|--------------------------|---------------------|------|
| RECOMMENDED FOR APPROVAL | DESIGN ENGINEER | DATE |
| DESIGNED: CJD 2/2023 | DRAWN: DPH 2/2023 | |
| CHECKED: JFM 2/2023 | CHECKED: CJD 2/2023 | |

INDIANA DEPARTMENT OF TRANSPORTATION

CROSS SECTIONS LINE "A"

| | |
|---------------------|--------------------------------------|
| SCALE 1"=5' | CULVERT ASSET ID CV 008-057-47.08 |
| | DESIGNATION 2002234 |
| | SHEETS 12 of 15 |
| CONTRACT R-43287 | PROJECT 2002234 |

2/10/2023 X:\Projects\2021\12161\280350 SR 8 SS 2002234\01_ConstrDocs\CAD\Sheet Files\2002233X_Sec01.dgn



NOT FOR CONSTRUCTION
DLZ INDIANA, LLC

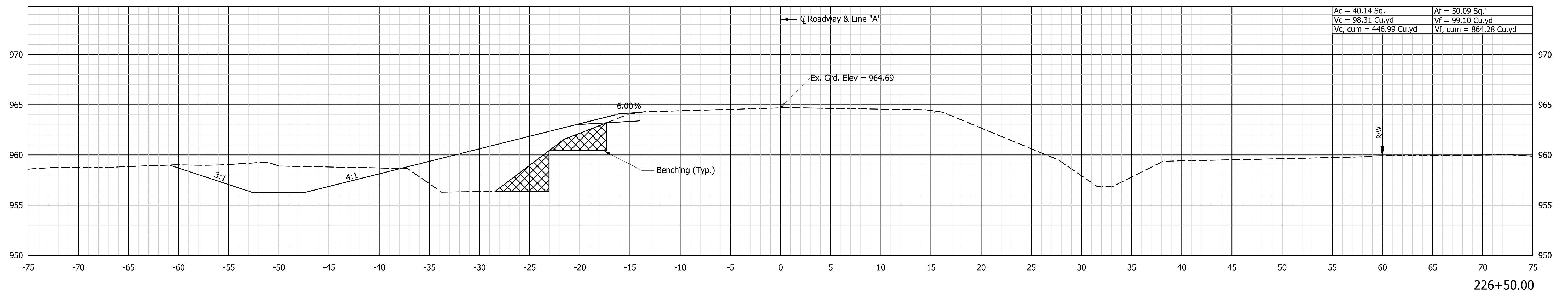
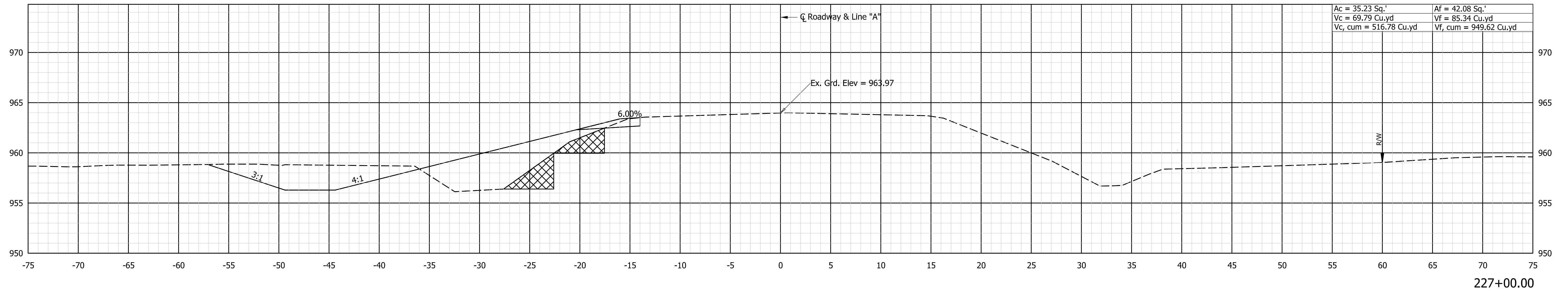
| | | |
|--------------------------|---------------------|------|
| RECOMMENDED FOR APPROVAL | DESIGN ENGINEER | DATE |
| DESIGNED: CJD 2/2023 | DRAWN: DPH 2/2023 | |
| CHECKED: JFM 2/2023 | CHECKED: CJD 2/2023 | |

INDIANA
DEPARTMENT OF TRANSPORTATION

**CROSS SECTIONS
LINE "A"**

| | |
|---------------------|--------------------------------------|
| SCALE 1"=5' | CULVERT ASSET ID CV 008-057-47.08 |
| | DESIGNATION 2002234 |
| | SHEETS 13 of 15 |
| CONTRACT R-43287 | PROJECT 2002234 |

2/10/2023 X:\Projects\2021\12161\280350 SR & SS 2002234\01_ConstrDocs\CAD\Sheet Files\2002233X_Sec01.dgn



NOT FOR CONSTRUCTION
DLZ INDIANA, LLC

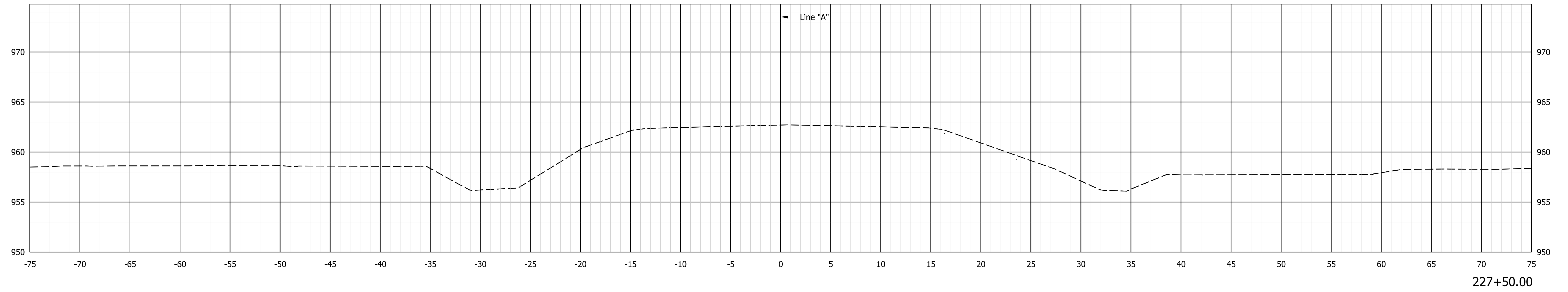
| | | |
|--------------------------|-----------------|--------------|
| RECOMMENDED FOR APPROVAL | DESIGN ENGINEER | DATE |
| DESIGNED: CJD | 2/2023 | DRAWN: DPH |
| 2/2023 | | 2/2023 |
| CHECKED: JFM | 2/2023 | CHECKED: CJD |
| | | 2/2023 |

INDIANA
DEPARTMENT OF TRANSPORTATION

CROSS SECTIONS
LINE "A"

| | |
|----------|------------------|
| SCALE | CULVERT ASSET ID |
| 1"=5' | CV 008-057-47.08 |
| | DESIGNATION |
| | 2002234 |
| | SHEETS |
| | 14 of 15 |
| CONTRACT | PROJECT |
| R-43287 | 2002234 |

2/10/2023
X:\Projects\2021\2161\280350 SR & SS 2002234\01_ConstrDocs\CAD\Sheet Files\2002233X_Sec01.dgn



End Incidental Construction Sta. 227+27.00 Line "A"

227+50.00



**NOT FOR
CONSTRUCTION**
DLZ INDIANA, LLC

| | | |
|--------------------------|-----------------|--------------|
| RECOMMENDED FOR APPROVAL | DESIGN ENGINEER | DATE |
| DESIGNED: CJD | 2/2023 | DRAWN: DPH |
| | | 2/2023 |
| CHECKED: JFM | 2/2023 | CHECKED: CJD |
| | | 2/2023 |

INDIANA
DEPARTMENT OF TRANSPORTATION

CROSS SECTIONS
LINE "A"

| | |
|----------|------------------|
| SCALE | CULVERT ASSET ID |
| 1"=5' | CV 008-057-47.08 |
| | DESIGNATION |
| | 2002234 |
| | SHEETS |
| | 15 of 15 |
| CONTRACT | PROJECT |
| R-43287 | 2002234 |