

STATE ROAD 22 PROJECT

State Road 22
Bridge and Road Reconstruction Project
Des. Nos. 1702864, 1383460 & 1800168

Upland, Grant County, Indiana
April 25, 2022



Welcome

- Introductions of Project Team



Alex Zembala, INDOT
Project Manager

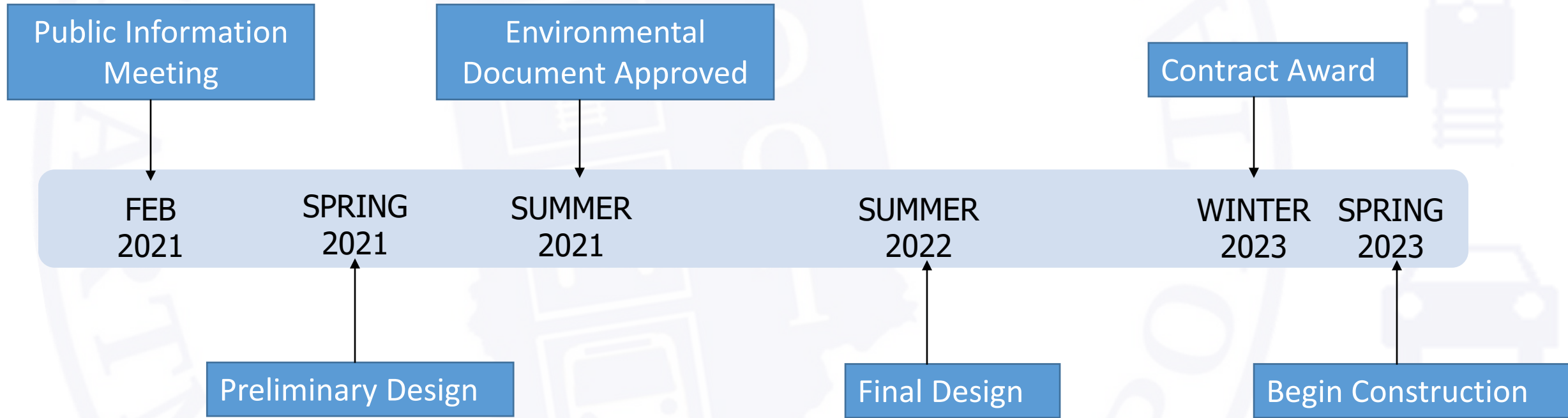


Kyle Muellner, Parsons
Project Manager
Bridge Lead

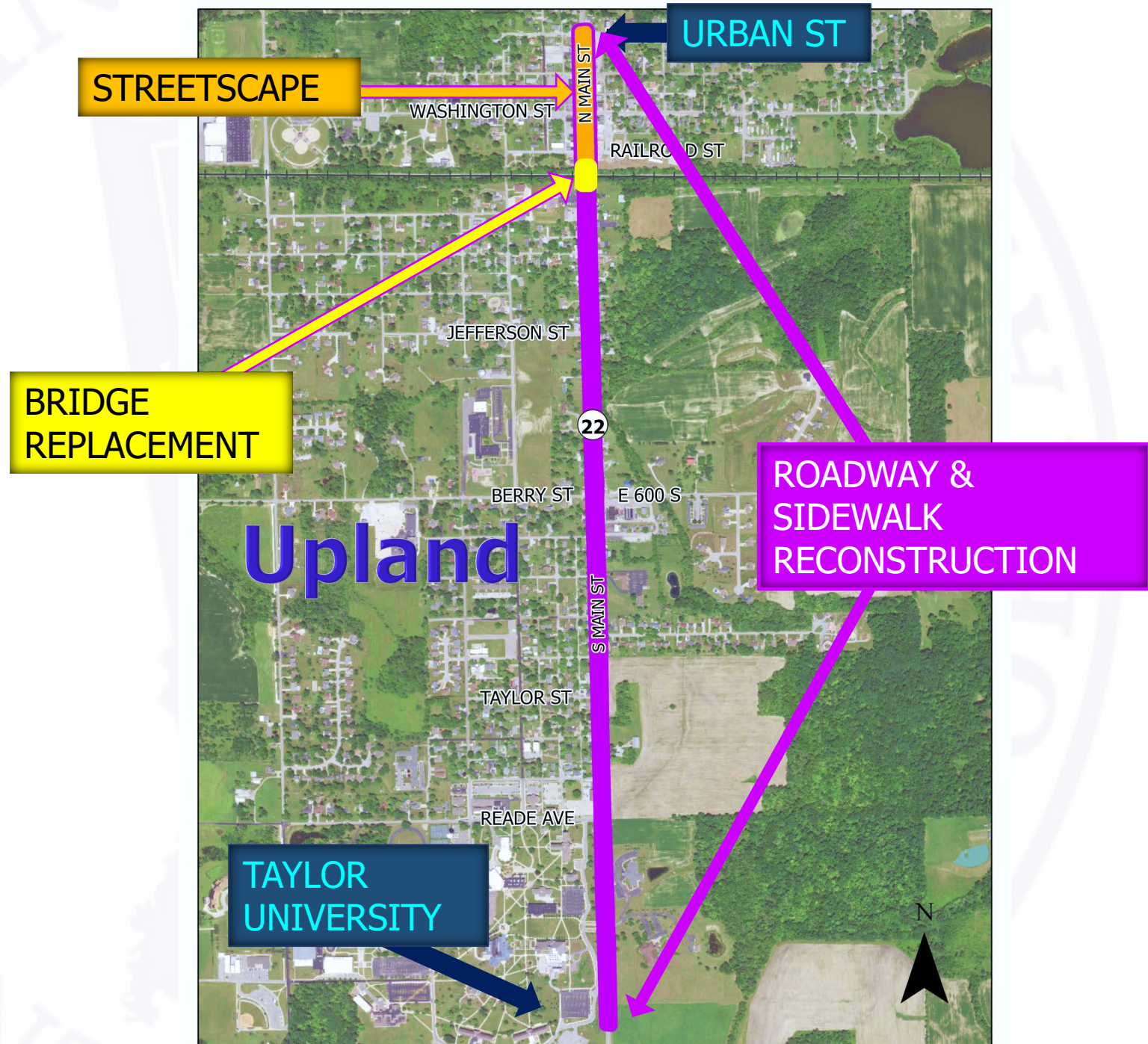


Matt Taylor, Parsons
Roadway Lead

Project Schedule



Project Location



Project Description

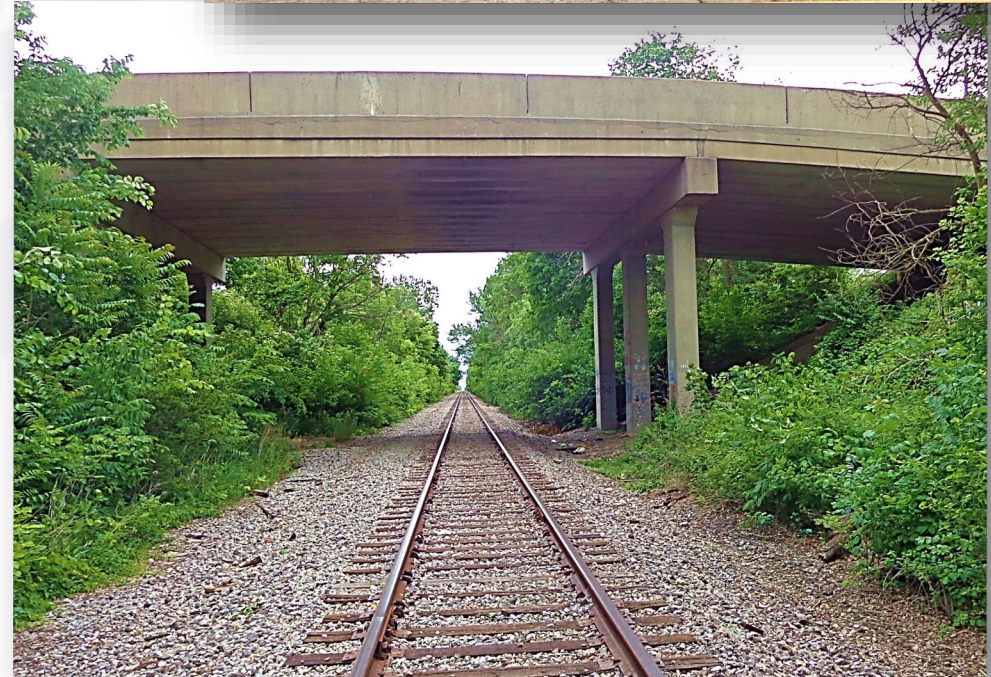
Road Reconstruction

- Reconstruct existing pavement from Urban Street to the entrance of Taylor University
- Pedestrian facilities will be upgraded in accordance with the Americans with Disabilities Act



Bridge Reconstruction

- Reconstruct bridge over railroad



Project Description

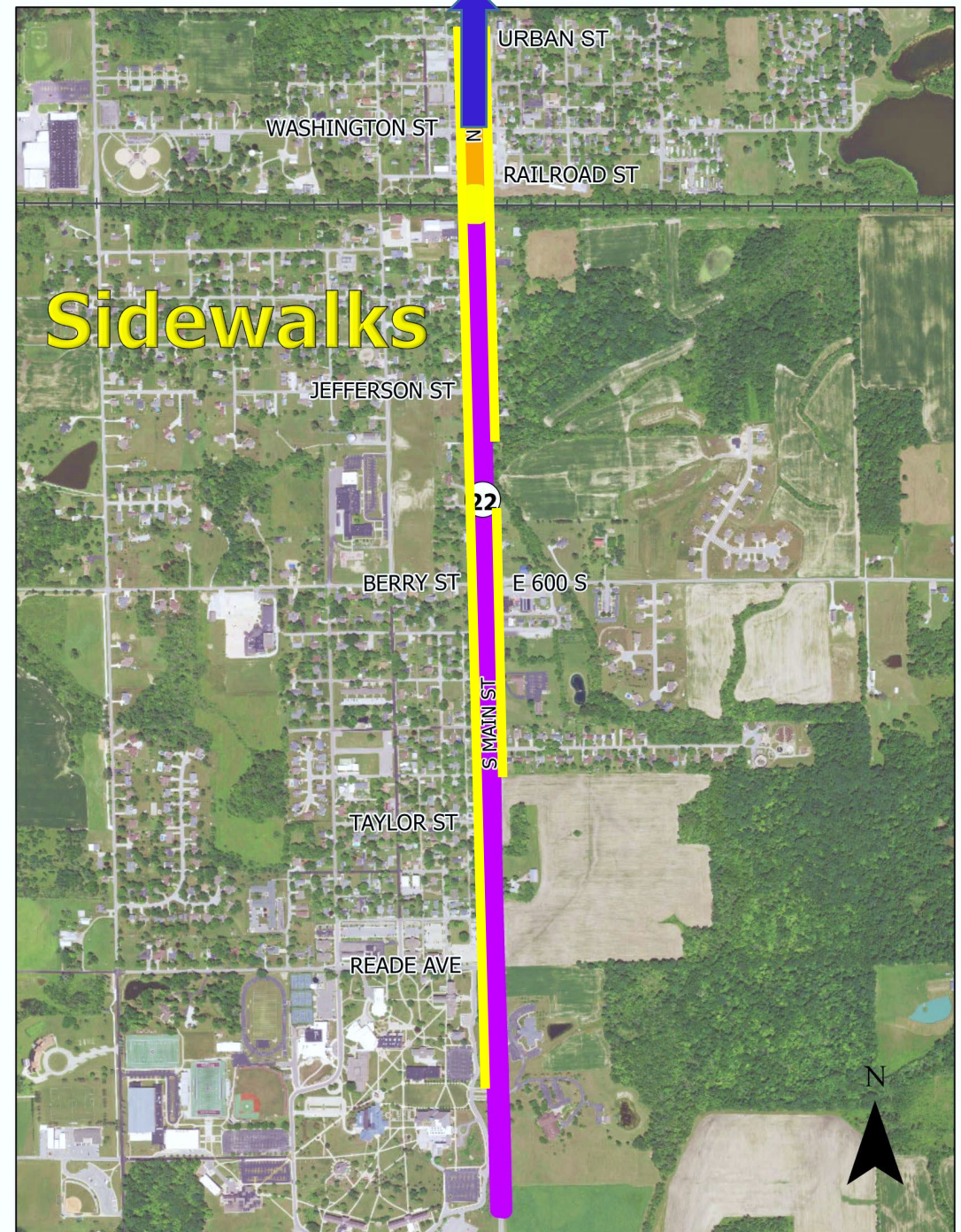
Sidewalks

West Side

- Taylor University throughout the project on the west side

East Side

- Bragg Avenue to Montgomery Street
- South of Jefferson Street through the project limits



Project Description

Road Reconstruction



Looking north along SR 22 (Main Street)



Rendering looking north along SR 22 (Main Street)

Project Description

Downtown Streetscape



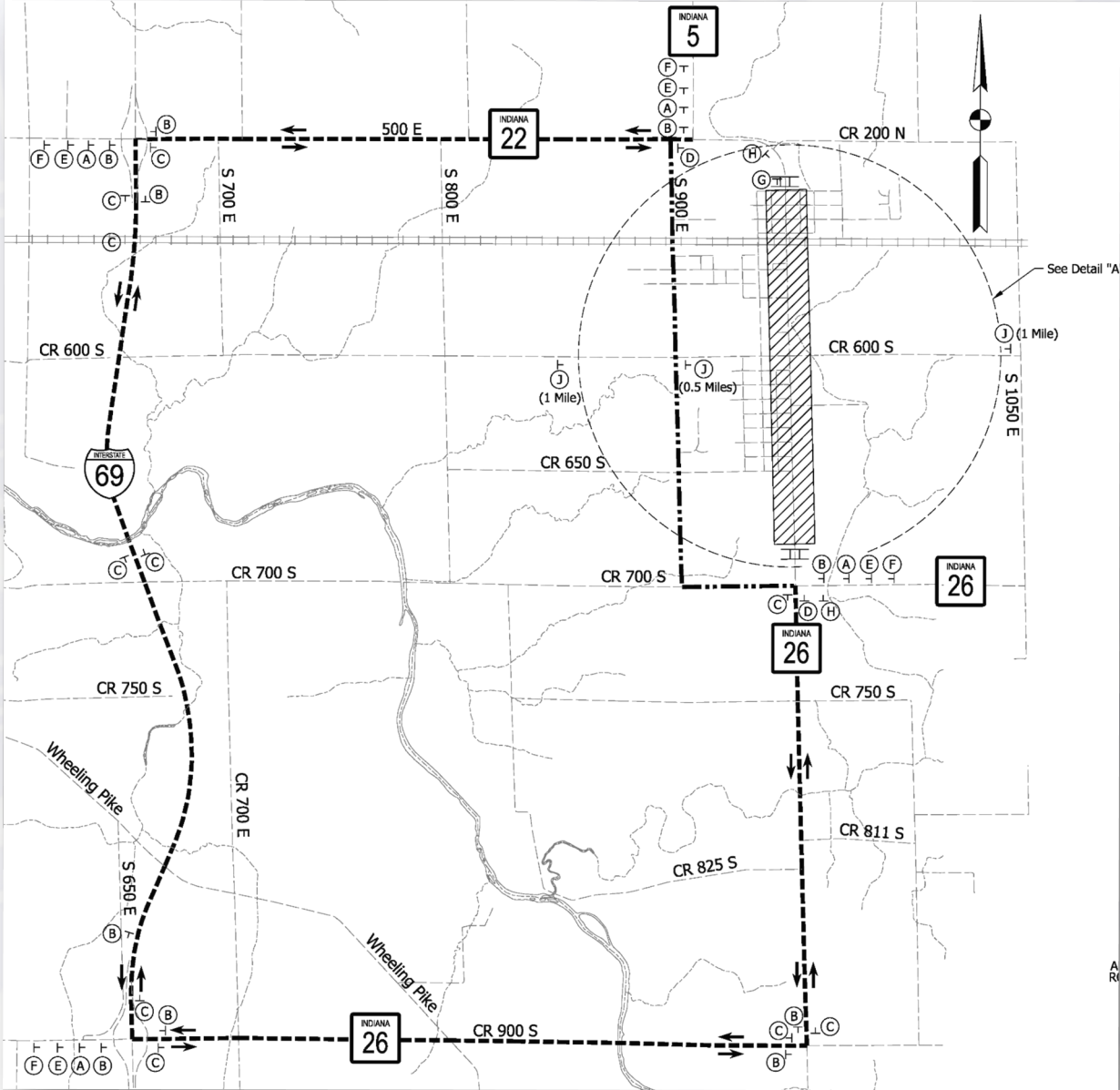
Looking north along SR 22 (Main Street)



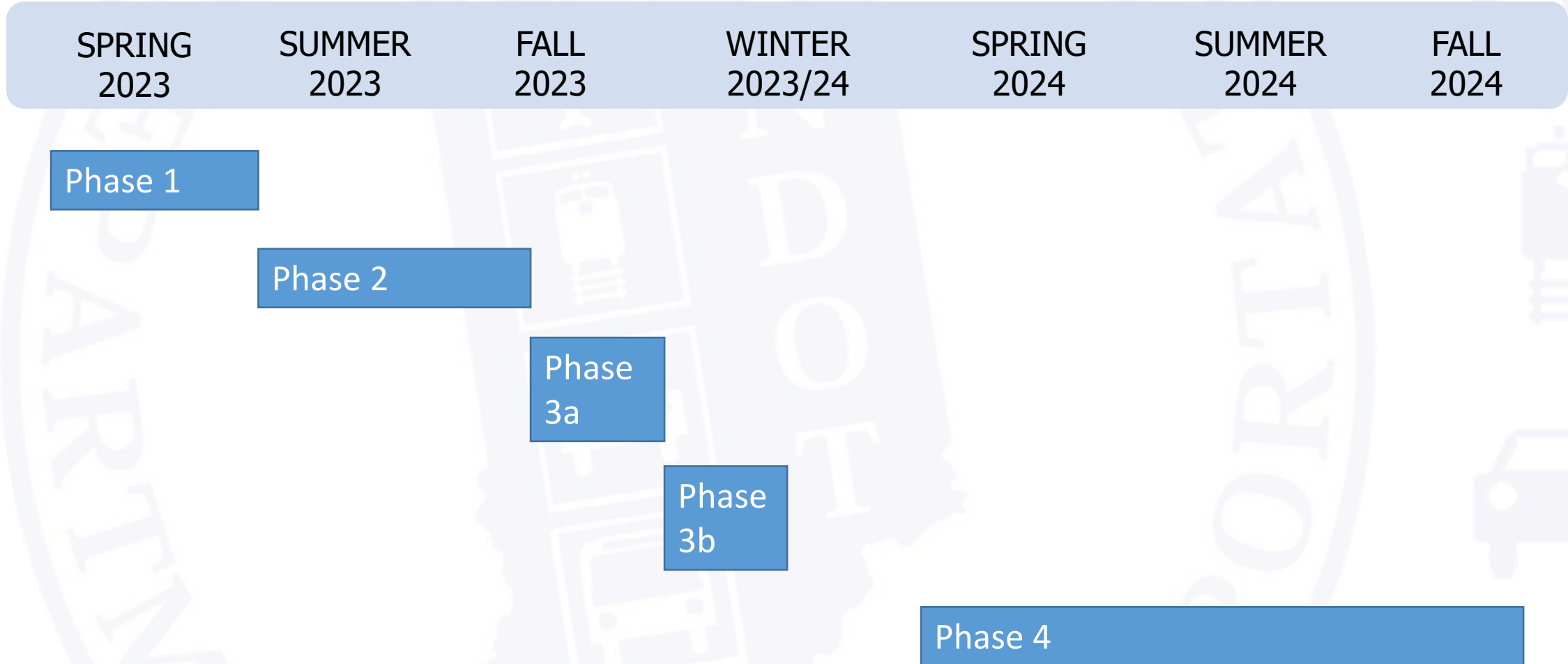
Streetscape rendering looking north along SR 22 (Main Street)

Maintenance of Traffic

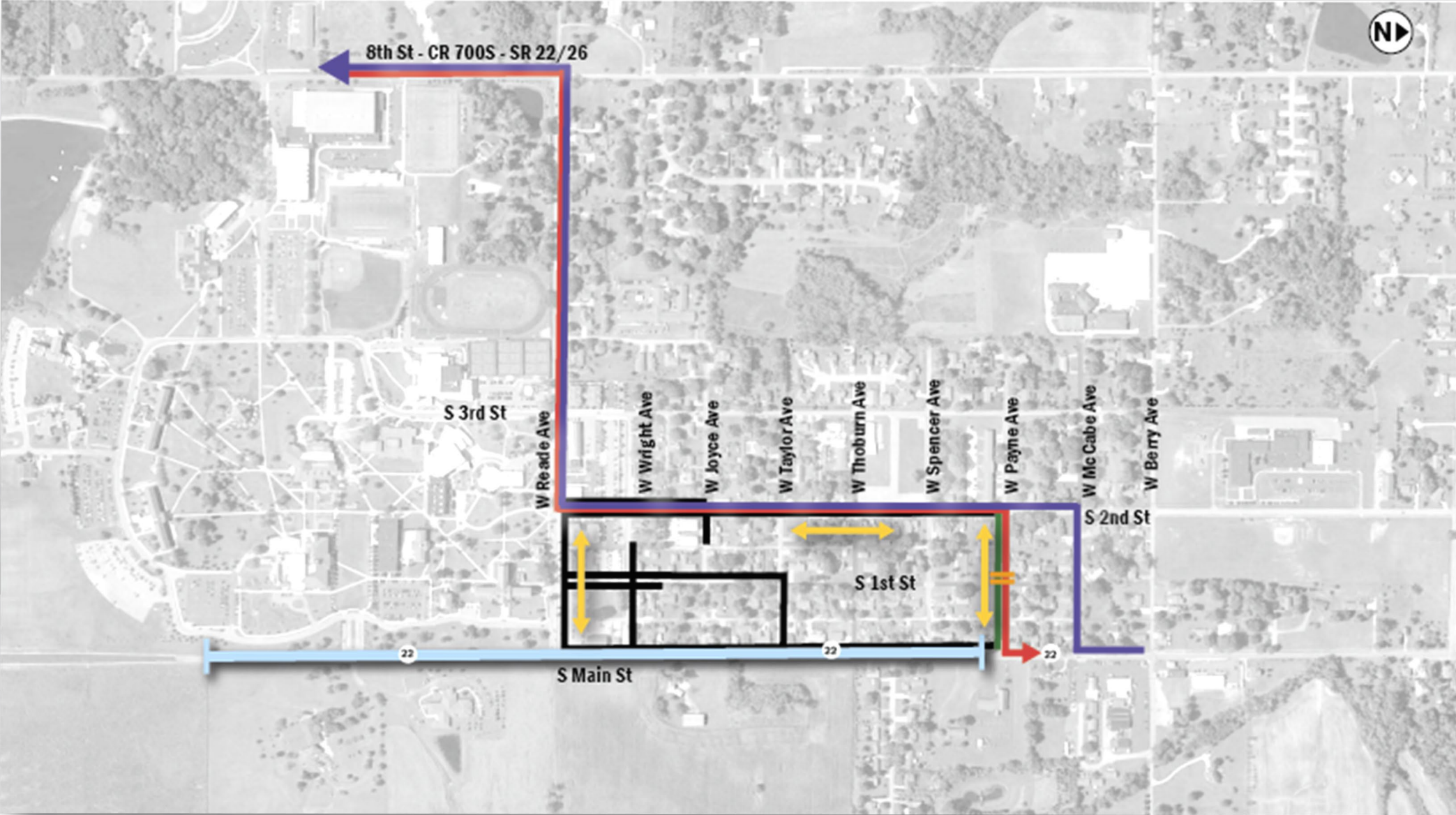
OFFICIAL DETOUR



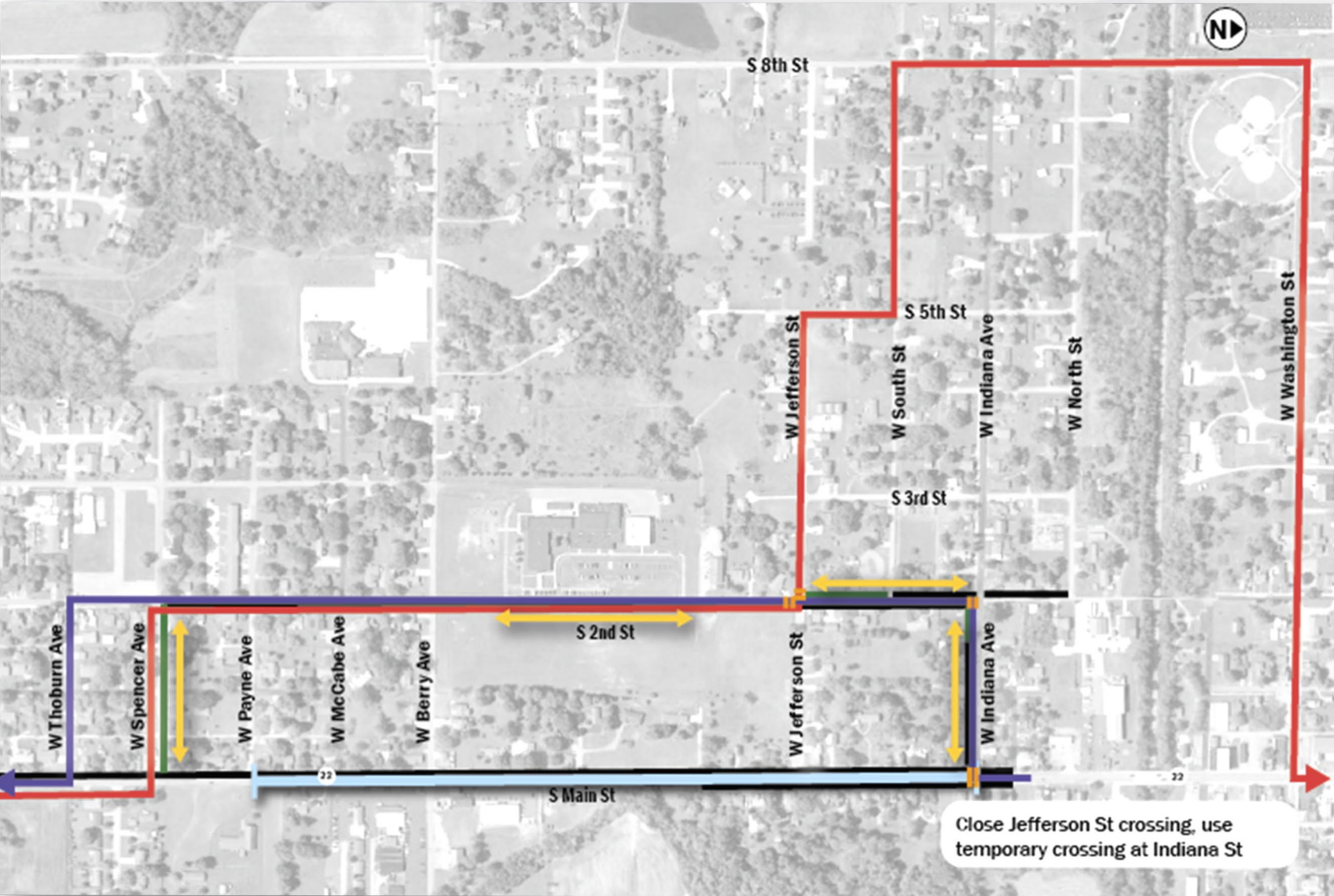
Construction Schedule



Maintenance of Traffic – Phase 1



Maintenance of Traffic – Phase 2



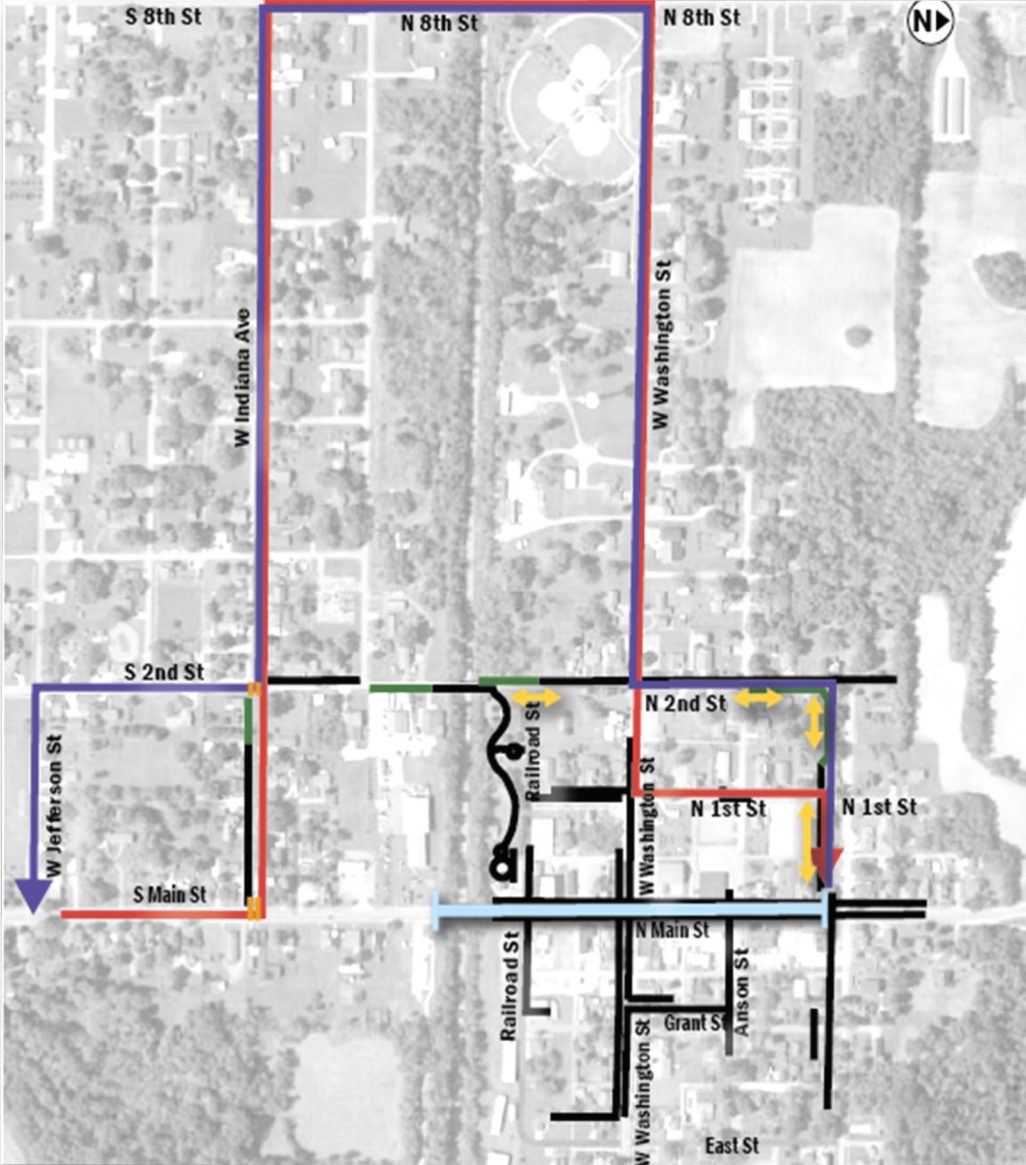
Maintenance of Traffic – Phase 3a



Maintenance of Traffic – Phase 3b



Maintenance of Traffic – Phase 4



Thank You

- Questions or comments:

INDOT Next Level Customer Service

855-INDOT4U (855-463-6848)

www.indot4u.com

indot@indot.in.gov



855-463-6848

Please mention "State Road 22 Bridge and Road Project" in your comments.