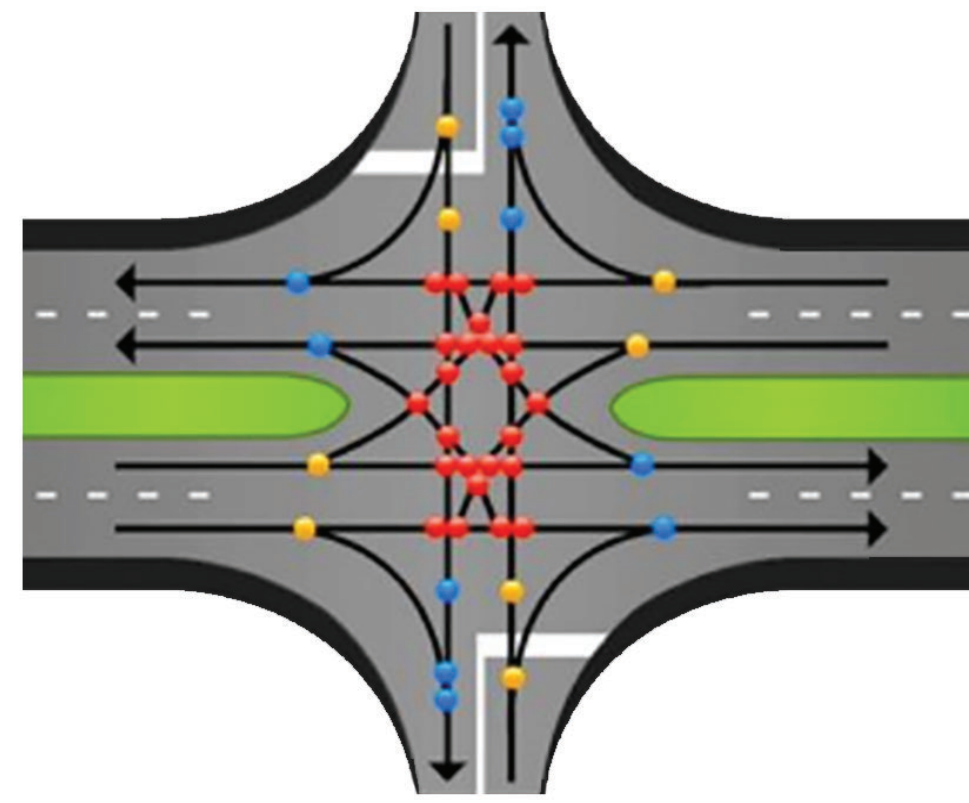


Conflict points for existing SR 37 and Dillman Road:

CONVENTIONAL INTERSECTION

- (24) Crossing Conflict Points
- (10) Merge Conflict Points
- (8) Diverge Conflict Points

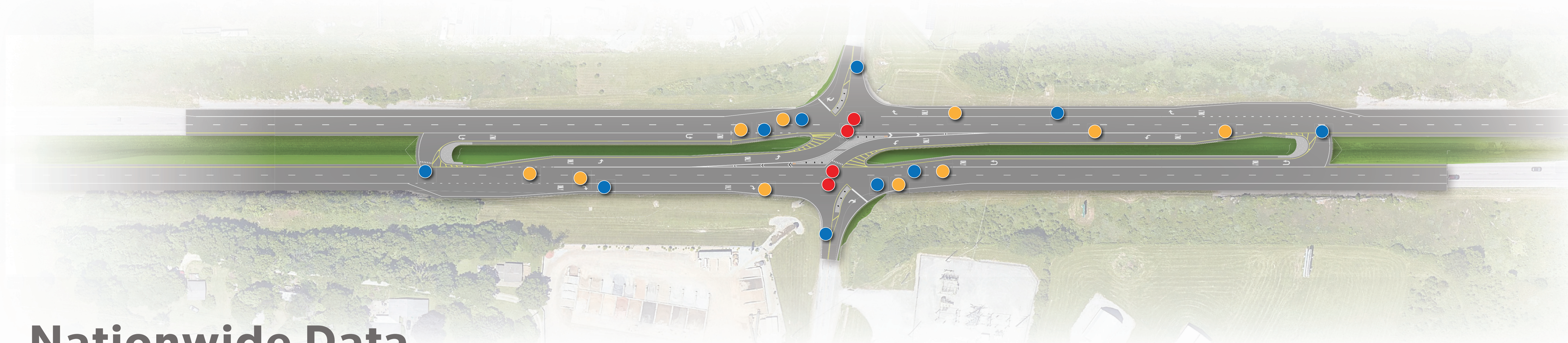


A traditional intersection has a total of **42 conflict points** where an accident could occur.

Of those, **24 crossing conflict points** can cause serious crashes like T-bone or right angle crashes.

* Conflict points for a Reduced Conflict Intersection (RCI) at SR 37 and Dillman Road:

- This RCI reduces the conflict points to **24 total**. Of those, **4 conflict points** can cause serious crashes like T-bone or right angle crashes.



- (4) Crossing
 - (10) Merge
 - (10) Diverge
- (24) Total Conflict Points**

Nationwide Data

When an RCI is installed in an unsignalized rural intersection:

- 50% reduction in ALL crashes
- 85% reduction in FATAL and INJURY crashes

INDIANA DATA

Since 2015, INDOT has installed **11 RCIs** at four-lane highway intersections **across the state**.

After being installed for over a year, crash data was evaluated for comparison.

- **68% reduction in crashes of any severity (ALL crashes)**
- **81% reduction in FATAL and INJURY crashes**

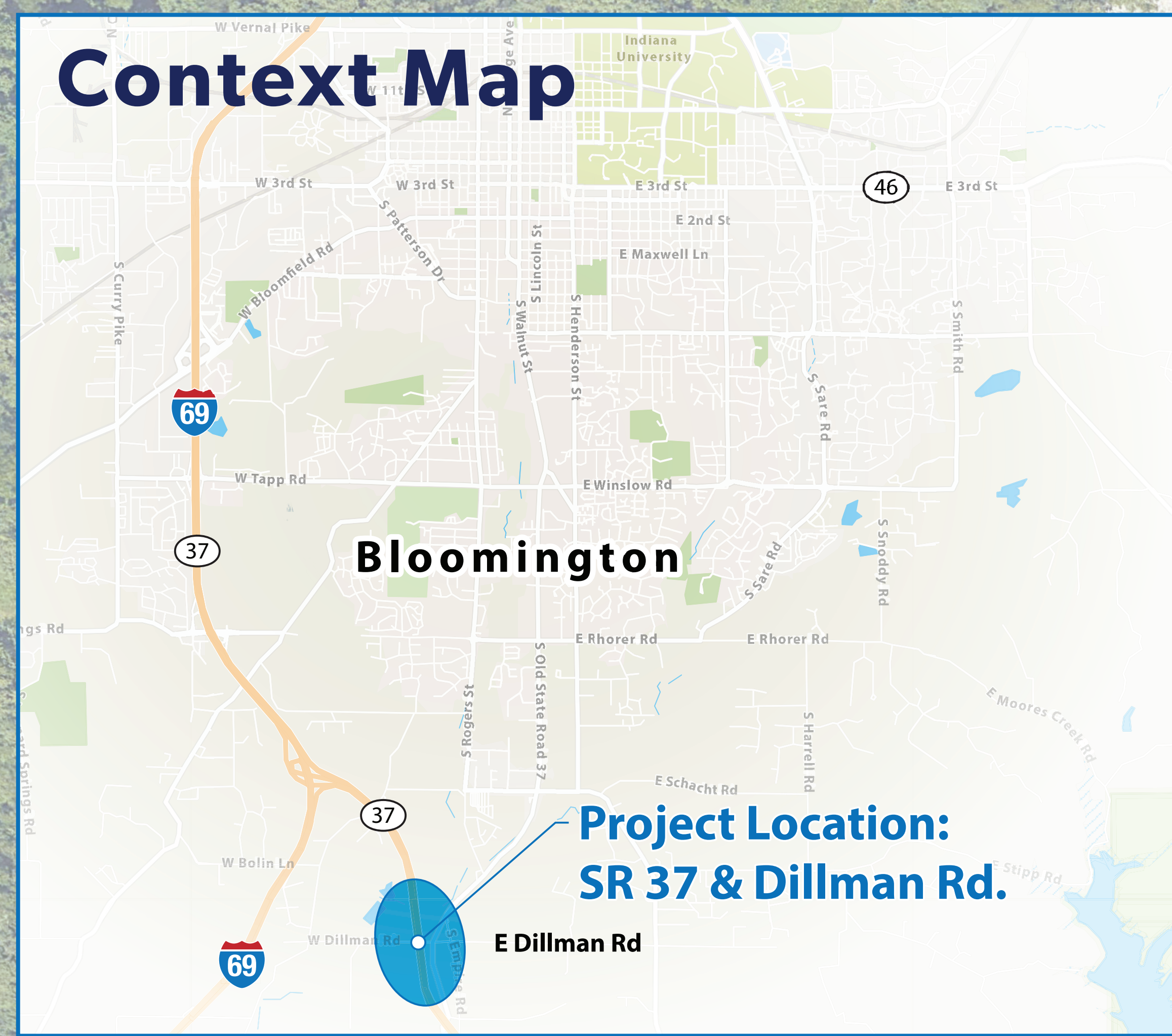
INDOT continues to track the safety performance of these and future RCIs to assess their effectiveness and advance our understanding of the traffic levels, design, and site conditions most suitable for this highway feature.

SR 37 & Dillman Road Intersection Improvement Project

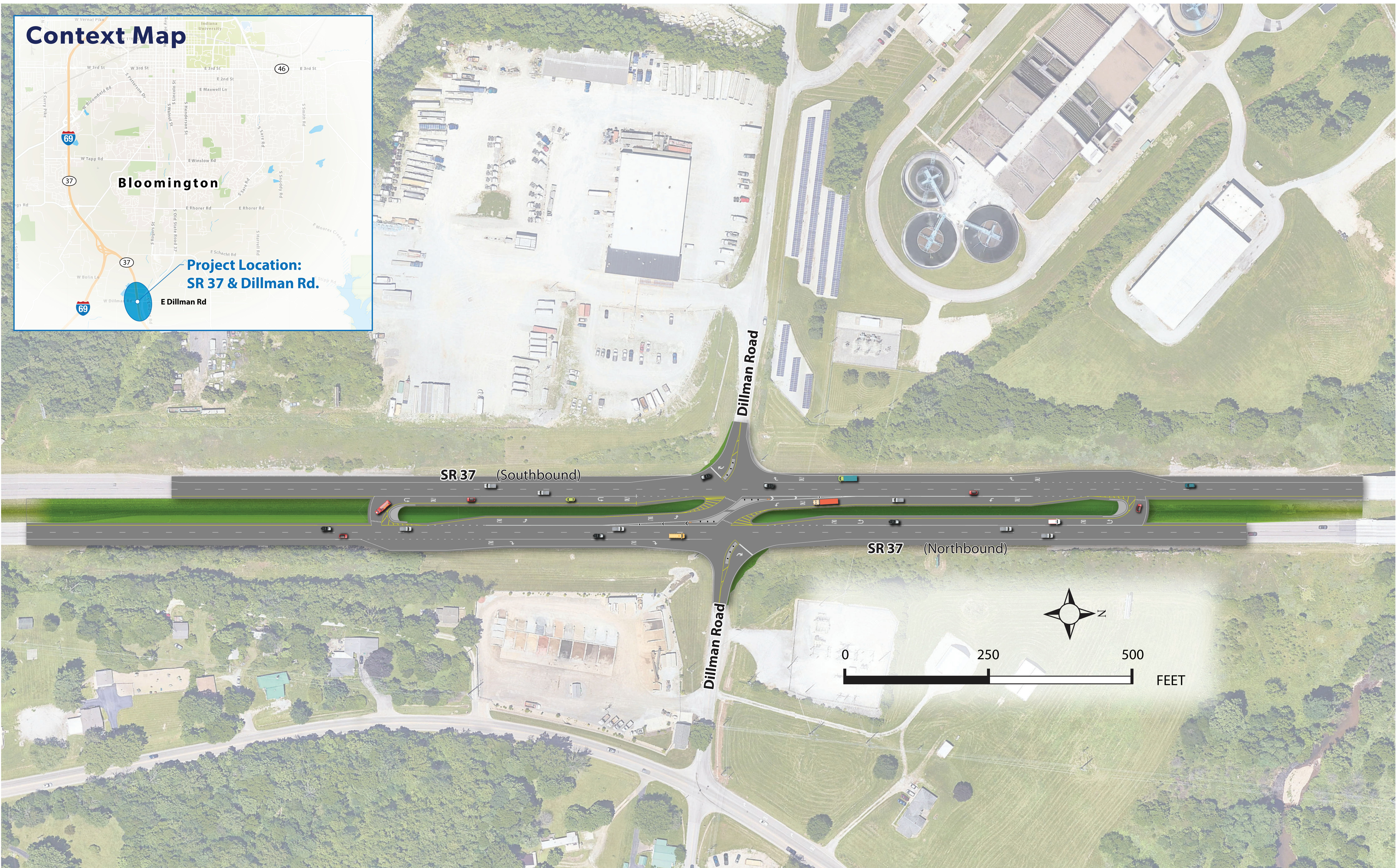
RCI FACTS & DATA



Context Map



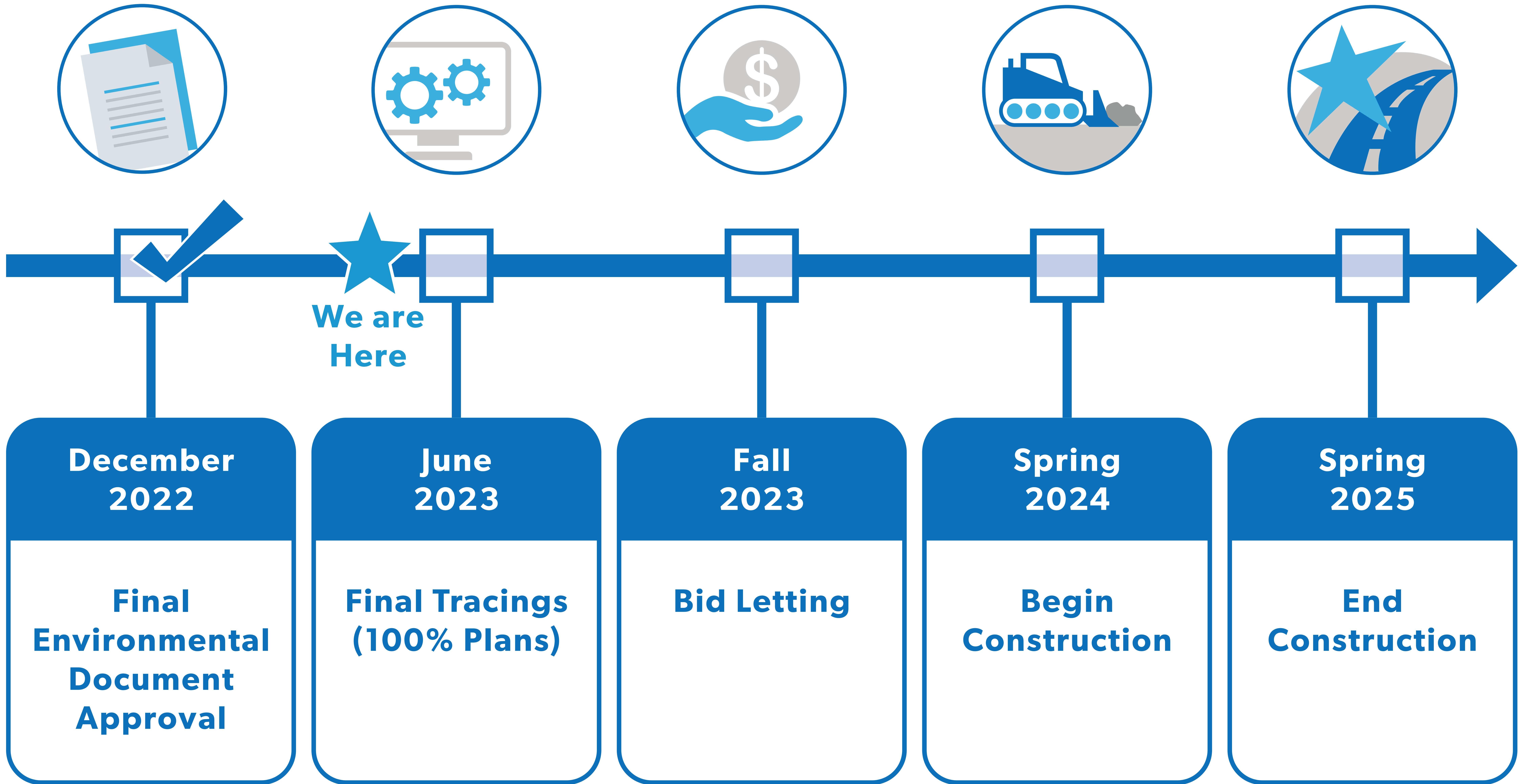
**Project Location:
SR 37 & Dillman Rd.**



SR 37 & Dillman Road Intersection Improvement Project

PROJECT LOCATION

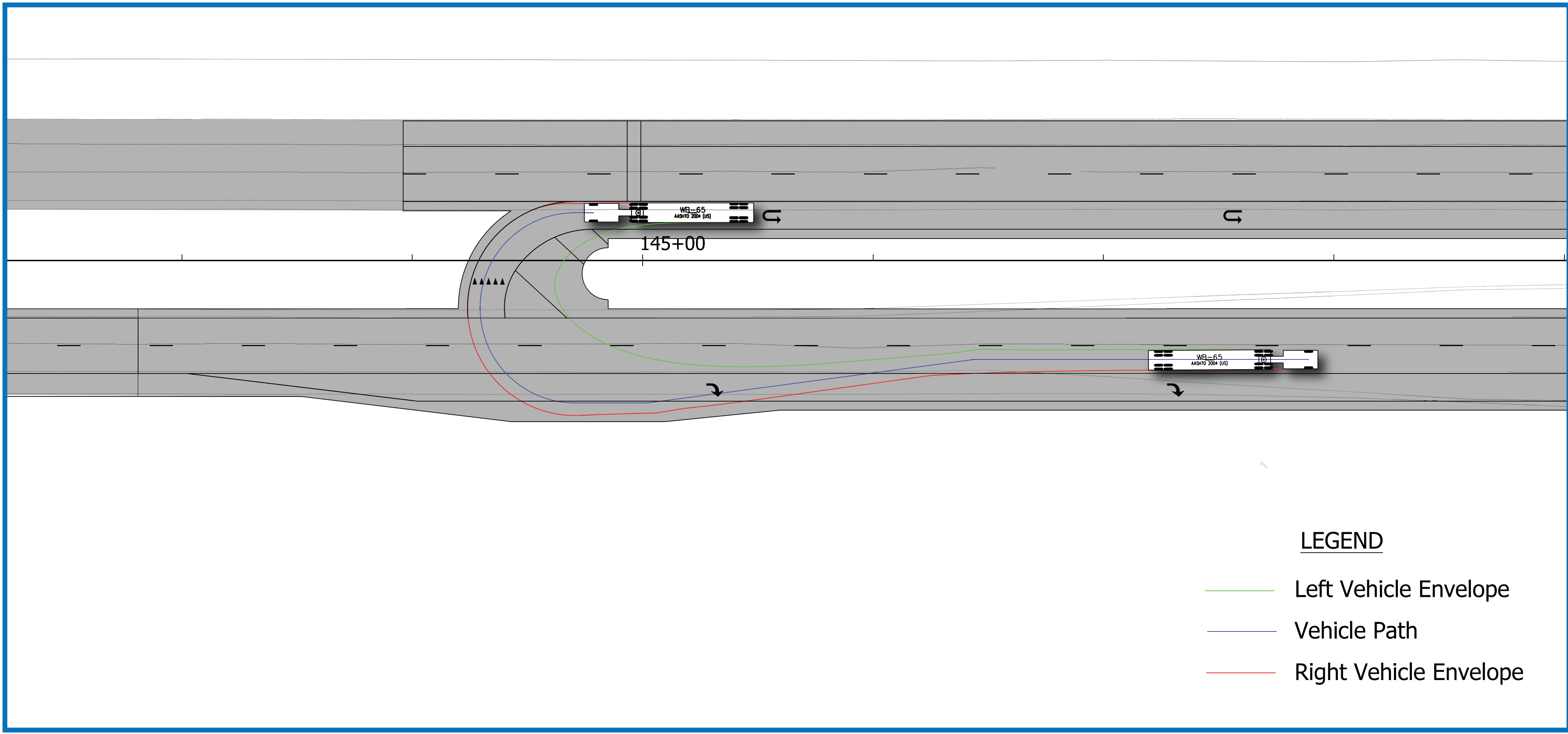




SR 37 & Dillman Road
 Intersection Improvement Project

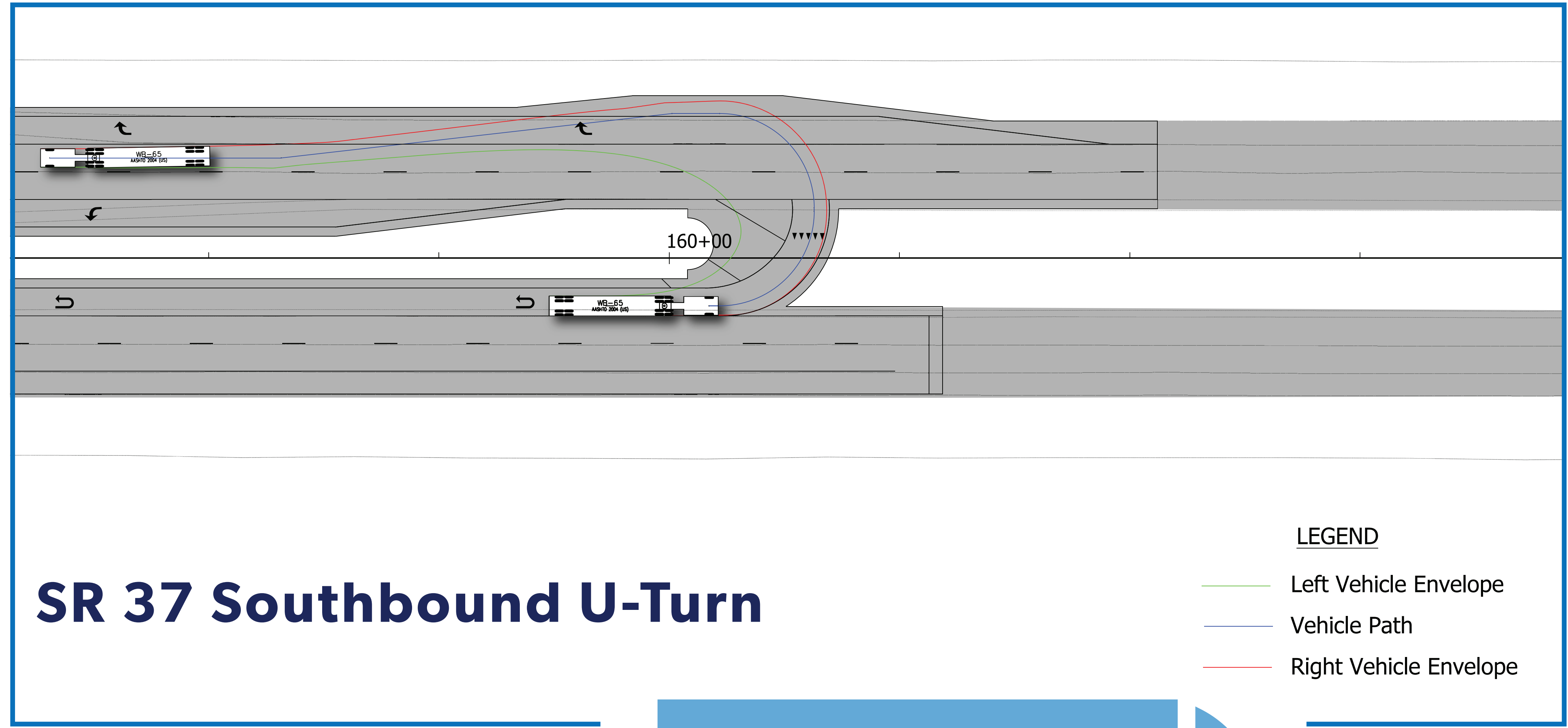
**ANTICIPATED PROJECT
 TIMELINE**





SR 37 Northbound U-Turn

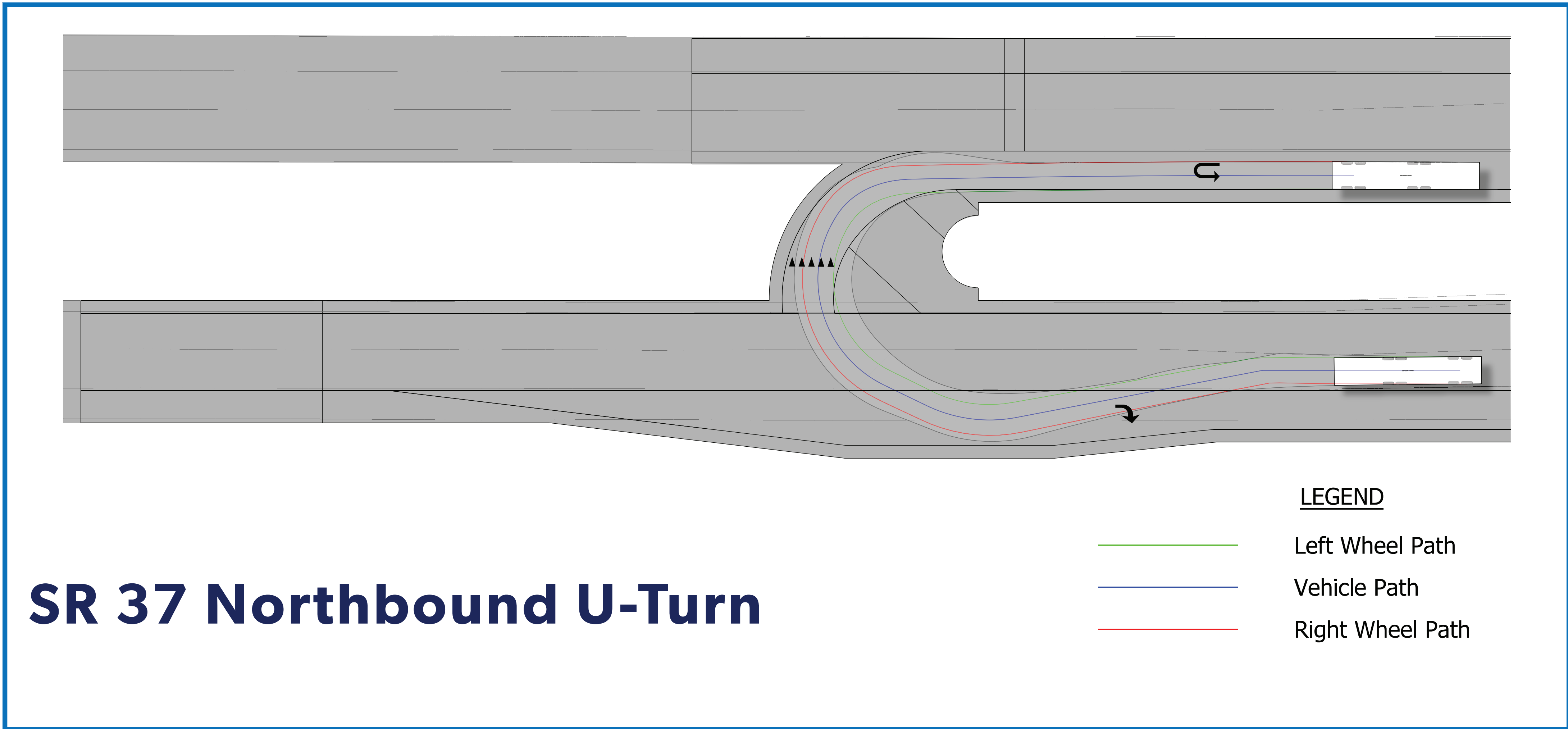
- LEGEND**
- Left Vehicle Envelope
 - Vehicle Path
 - Right Vehicle Envelope



SR 37 Southbound U-Turn

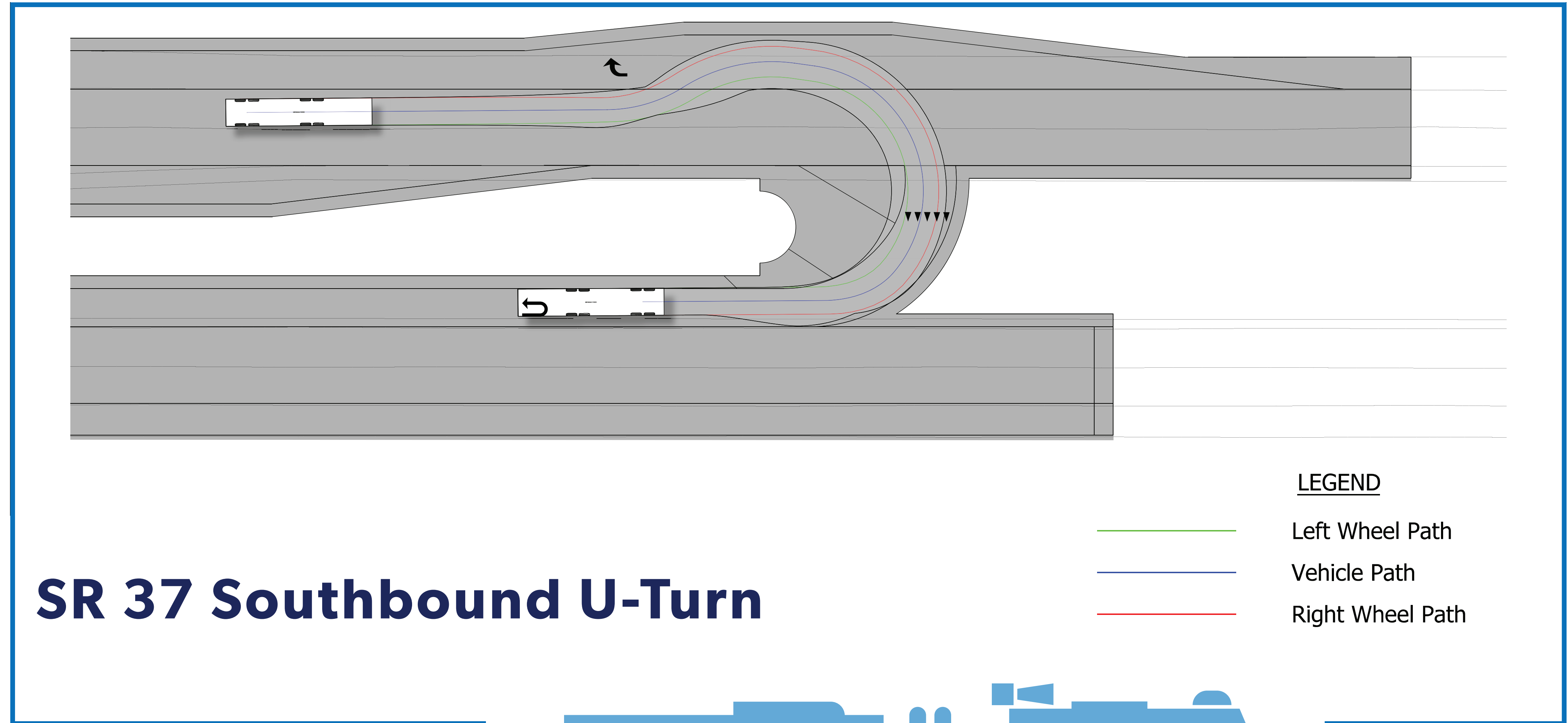
- LEGEND**
- Left Vehicle Envelope
 - Vehicle Path
 - Right Vehicle Envelope

SEMI TRACTOR TRAILER



SR 37 Northbound U-Turn

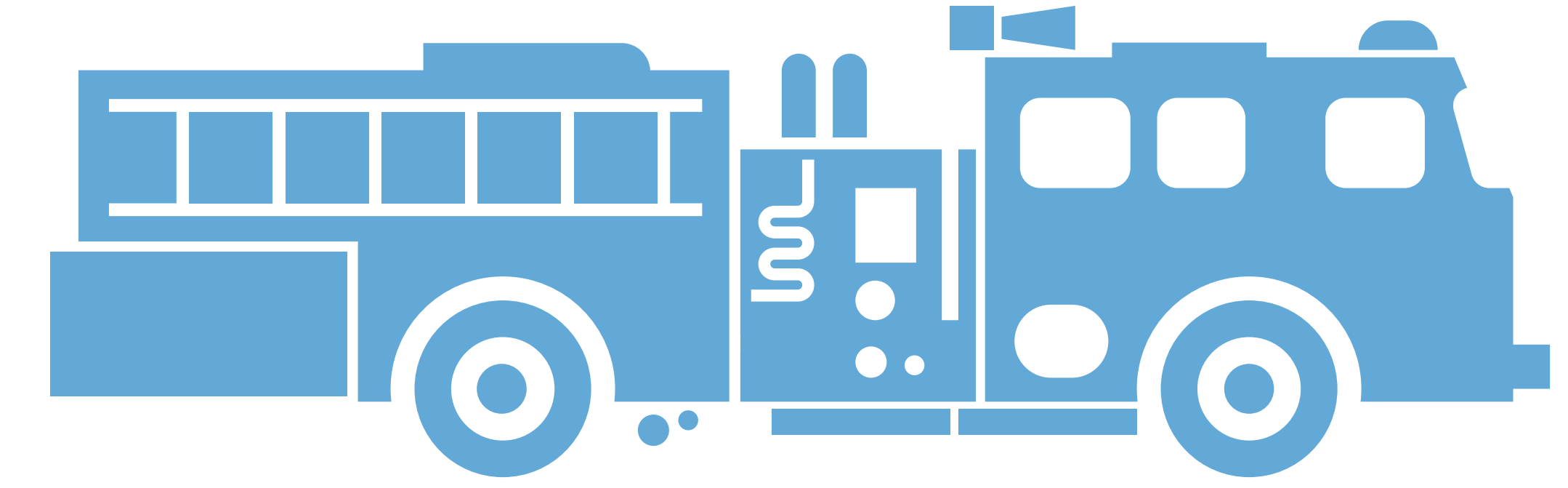
- LEGEND**
- Left Wheel Path
 - Vehicle Path
 - Right Wheel Path



SR 37 Southbound U-Turn

- LEGEND**
- Left Wheel Path
 - Vehicle Path
 - Right Wheel Path

FIRE TRUCK



SR 37 & Dillman Road

Intersection Improvement Project

TURNING MOVEMENTS

