

**TYPICAL SECTION: FROM JUST EAST OF US 27  
TO 350' WEST OF TOWER DRIVE**



**TYPICAL SECTION: FROM 350' WEST OF TOWER DRIVE  
TO ADAMS CENTRAL SCHOOL FIELDS**



Proposed R.O.W.

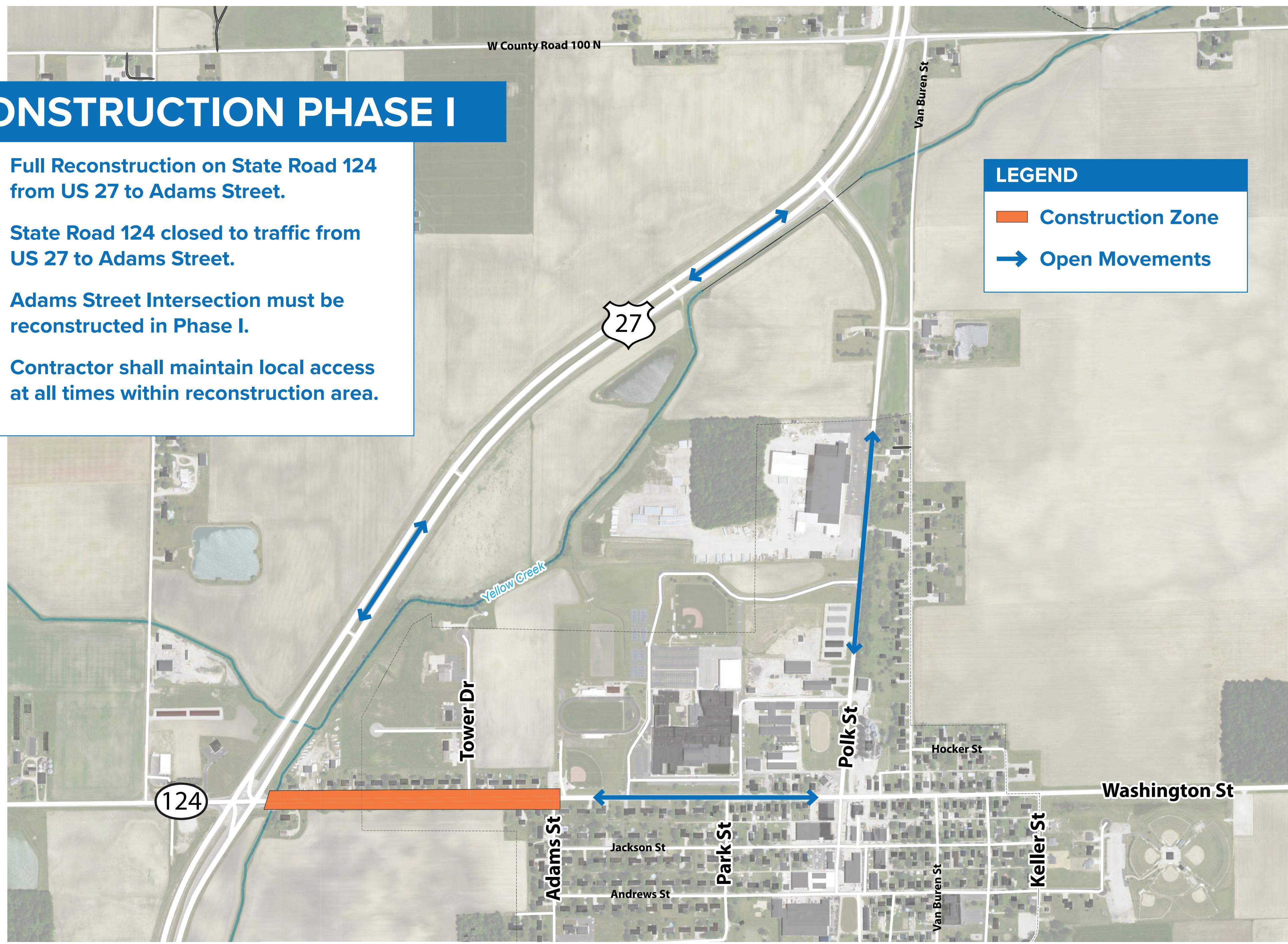
**TYPICAL SECTION: FROM ADAMS CENTRAL SCHOOL FIELDS TO KELLER STREET**

## CONSTRUCTION PHASE I

1. Full Reconstruction on State Road 124 from US 27 to Adams Street.
2. State Road 124 closed to traffic from US 27 to Adams Street.
3. Adams Street Intersection must be reconstructed in Phase I.
4. Contractor shall maintain local access at all times within reconstruction area.

### LEGEND

- Construction Zone
- Open Movements

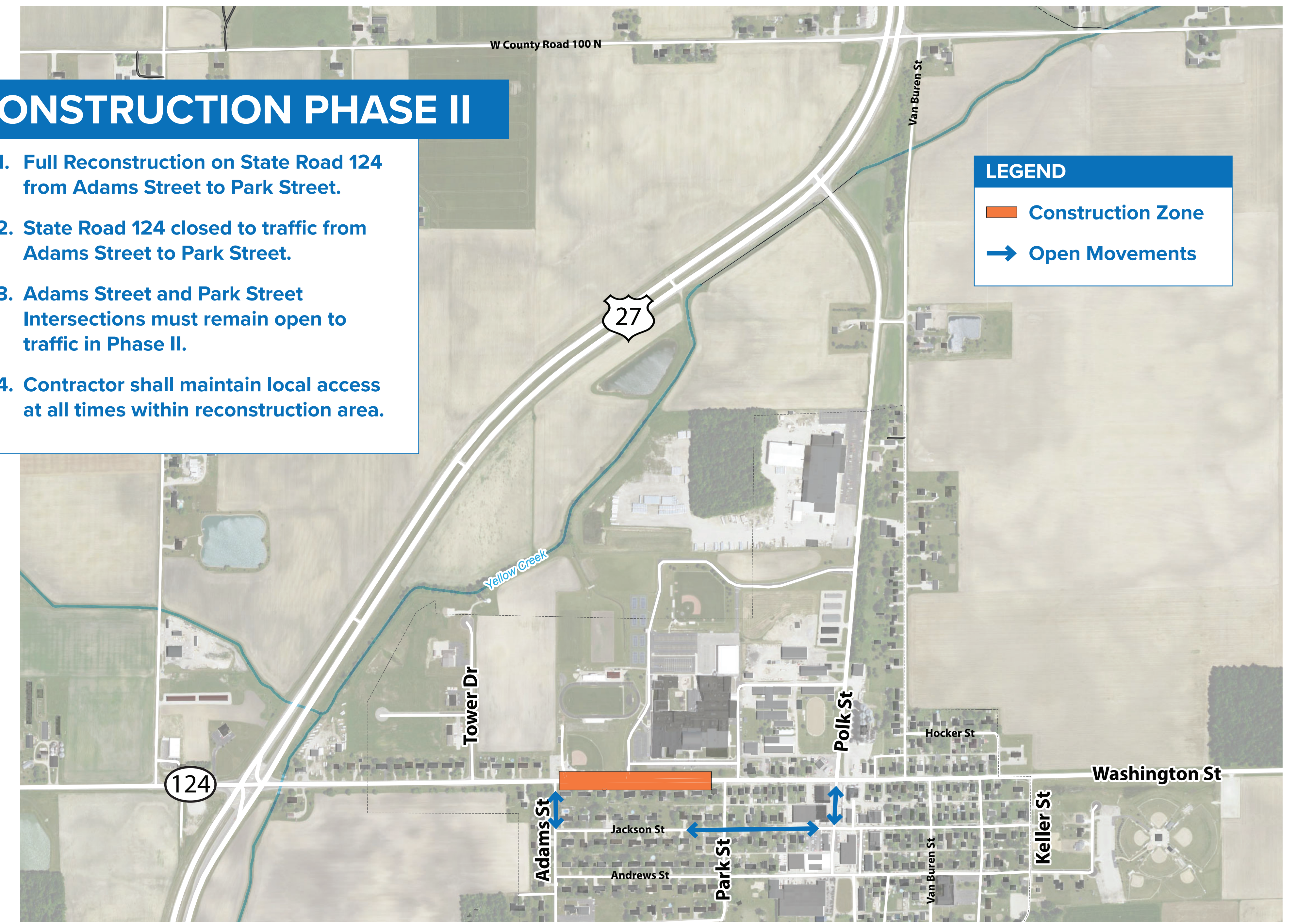


## CONSTRUCTION PHASE II

1. Full Reconstruction on State Road 124 from Adams Street to Park Street.
2. State Road 124 closed to traffic from Adams Street to Park Street.
3. Adams Street and Park Street Intersections must remain open to traffic in Phase II.
4. Contractor shall maintain local access at all times within reconstruction area.

### LEGEND

- Construction Zone
- Open Movements

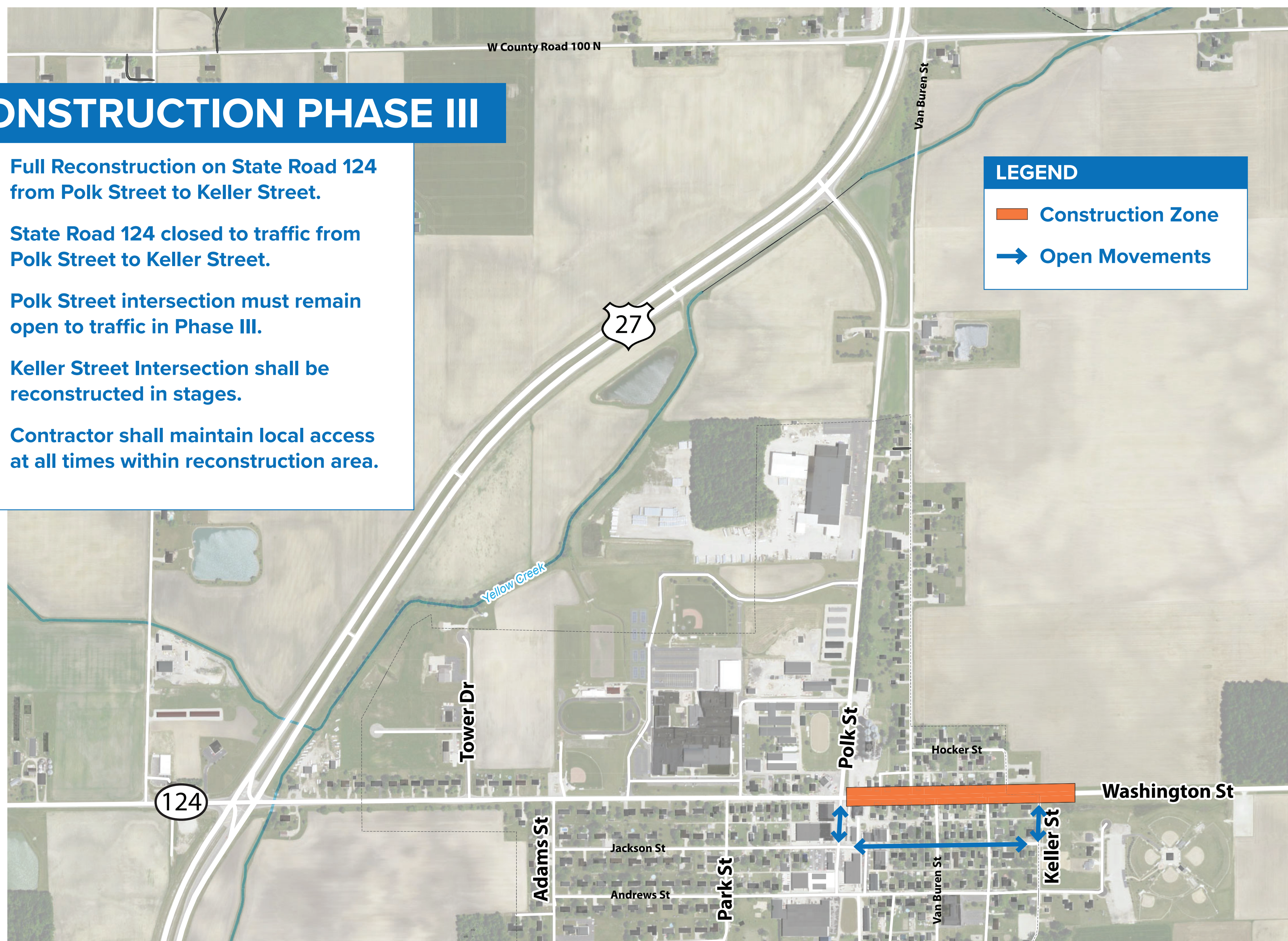


## CONSTRUCTION PHASE III

1. Full Reconstruction on State Road 124 from Polk Street to Keller Street.
2. State Road 124 closed to traffic from Polk Street to Keller Street.
3. Polk Street intersection must remain open to traffic in Phase III.
4. Keller Street Intersection shall be reconstructed in stages.
5. Contractor shall maintain local access at all times within reconstruction area.

### LEGEND

- Construction Zone
- Open Movements

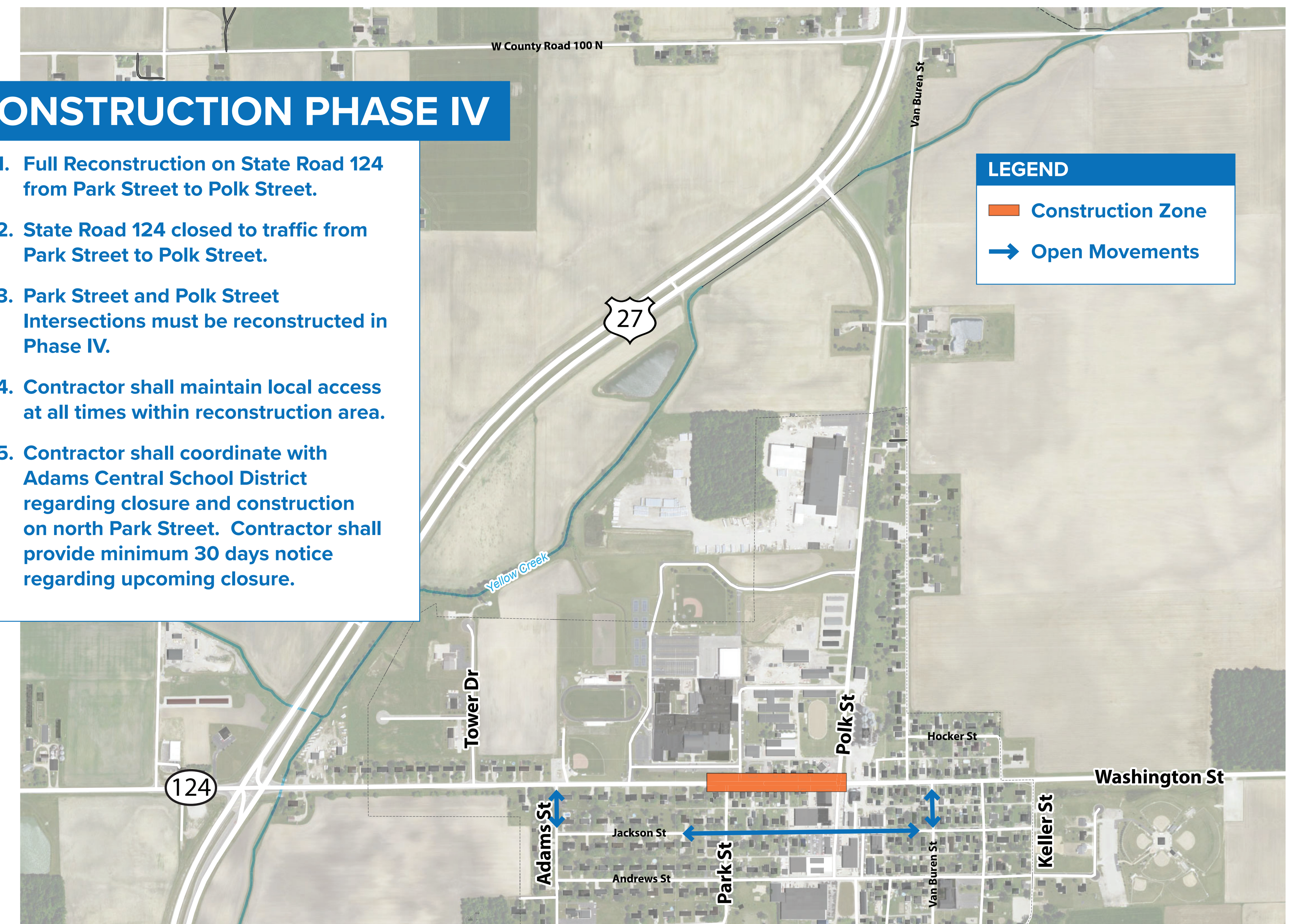


## CONSTRUCTION PHASE IV

1. Full Reconstruction on State Road 124 from Park Street to Polk Street.
2. State Road 124 closed to traffic from Park Street to Polk Street.
3. Park Street and Polk Street Intersections must be reconstructed in Phase IV.
4. Contractor shall maintain local access at all times within reconstruction area.
5. Contractor shall coordinate with Adams Central School District regarding closure and construction on north Park Street. Contractor shall provide minimum 30 days notice regarding upcoming closure.

### LEGEND

- Construction Zone
- Open Movements



# Estimated Timeline

