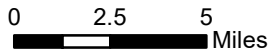


Service Layer Credits: Sources: Esri, HERE, Garmin, USGS, Intermap, INCREMENT P, NRCan, Esri Japan, METI, Esri China (Hong Kong), Esri Korea,

- Project Area
- Tippecanoe County
- NRCS Land Resource Regions**
- Northeast and Northcentral
- Midwest
- Eastern Mountains and Piedmont



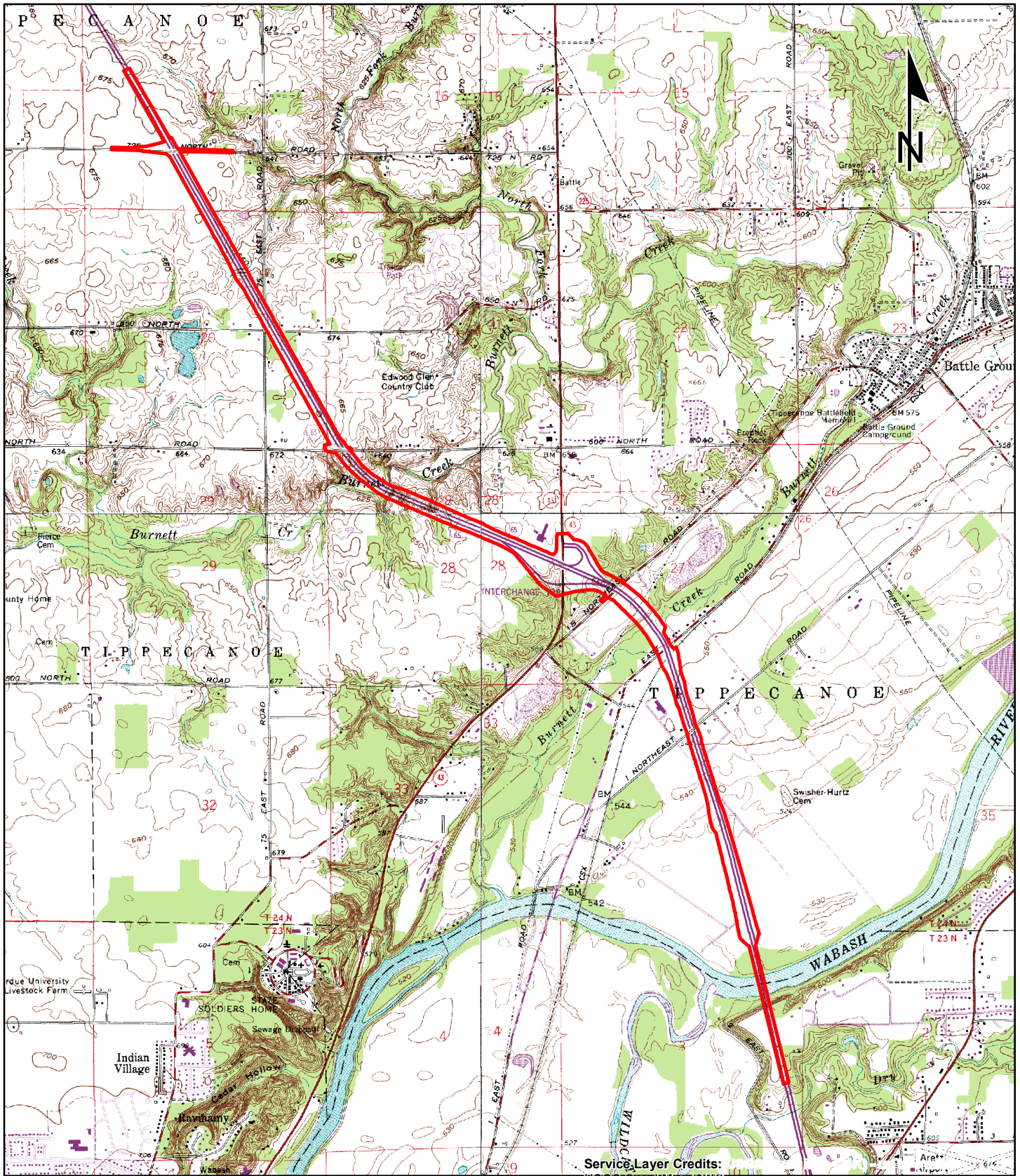
Project Location Map
I-65 Added Travel Lanes Project
Tippecanoe County, Indiana

Des. No. 2001172

1 inch = 5 miles



Graphics created by HNTB Corporation (2021)



Service Layer Credits:
 USGS Quad Map (24K)
 - up to 4 miles

 Project Area

0 1,500 3,000
 Feet

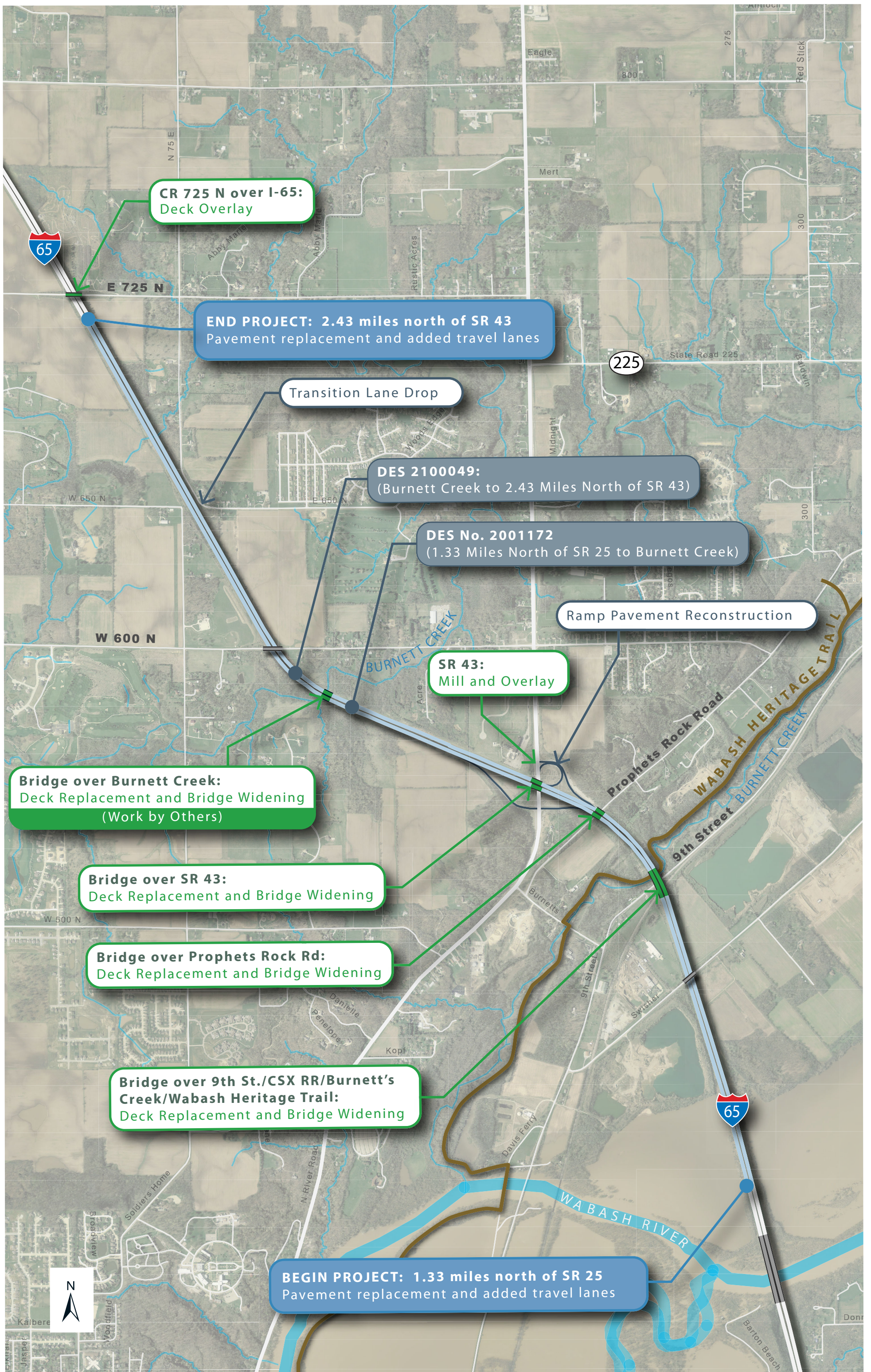
**USGS Topographic Lafayette East & West, Brookston,
 & Brookston SW Quadrangle Map**
 I-65 Added Travel Lanes
 Tippecanoe County, Indiana

Des. No. 2001172

1 in = 3,000 ft

HNTB

Graphics created by HNTB Corporation (2021)



CR 725 N over I-65:
Deck Overlay

END PROJECT: 2.43 miles north of SR 43
Pavement replacement and added travel lanes

Transition Lane Drop

DES 2100049:
(Burnett Creek to 2.43 Miles North of SR 43)

DES No. 2001172
(1.33 Miles North of SR 25 to Burnett Creek)

Ramp Pavement Reconstruction

SR 43:
Mill and Overlay

Bridge over Burnett Creek:
Deck Replacement and Bridge Widening
(Work by Others)

Bridge over SR 43:
Deck Replacement and Bridge Widening

Bridge over Prophets Rock Rd:
Deck Replacement and Bridge Widening

**Bridge over 9th St./CSX RR/Burnett's
Creek/Wabash Heritage Trail:**
Deck Replacement and Bridge Widening

BEGIN PROJECT: 1.33 miles north of SR 25
Pavement replacement and added travel lanes