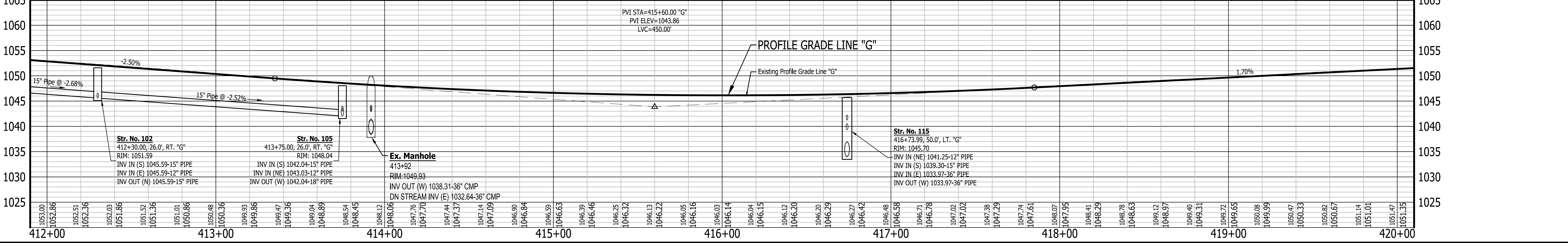


- LEGEND**
- (A) 220#/SYD. CC/QA-HMA, 3, 70, SURFACE 12.5 mm ON 275#/SYD. CC/QA-HMA, 3, 70, INTERMEDIATE 19.0 mm ON 275#/SYD. CC/QA-HMA, 3, 64, BASE 19.0 mm ON 330#/SYD. CC/QA-HMA, 3, 64, BASE 19.0 mm ON 300#/SYD. CC/QA-HMA, 4, 75, INTERMEDIATE, CG, 19.0 mm ON 6 IN. COMPACTED AGGREGATE NO. 53 ON SUBGRADE TREATMENT, TYPE ID
 - (A1) HMA FOR APPROACHES, TYPE C - CONSISTING OF : 220 LBS/SYD. HMA, SURFACE, TYPE C ON 275 LBS/SYD. HMA, INTERMEDIATE, TYPE C ON 605 LBS/SYD. HMA, BASE, TYPE C ON SUBGRADE TREATMENT, TYPE ID
 - (A2) HMA FOR APPROACHES, TYPE D - CONSISTING OF : 220 LBS/SYD. HMA, SURFACE, TYPE D ON 275 LBS/SYD. HMA, INTERMEDIATE, TYPE D ON 880 LBS/SYD. HMA, BASE, TYPE D ON SUBGRADE TREATMENT, TYPE ID
 - (D1) PCCP FOR APPROACHES, 6 IN., ON DENSE GRADED SUBBASE, 6 IN., ON SUBGRADE TREATMENT TYPE II
 - (D2) PCCP FOR APPROACHES, 9 IN., ON DENSE GRADED SUBBASE, 6 IN., ON GEORGRID TYPE 1B, ON SUBGRADE TREATMENT TYPE II
 - (D3) HMA FOR APPROACHES: 165 LBS/SYD. HMA, SURFACE, TYPE C
 - (F) SIDEWALK, CONCRETE, 4 IN.
 - (FT) SIDEWALK TRANSITION
 - (IS) ISLAND, CONCRETE, CURB, 4 IN.
 - (RA) CONCRETE SIDEWALK RAMP
 - (PC) PCC PATCHING, FULL DEPTH
 - (PH) HMA PATCHING, FULL DEPTH, TYPE C
 - (13) CURB, INTEGRAL CONCRETE
 - (14) CURB, CONCRETE
 - (15) CURB AND GUTTER, CONCRETE
 - (16) CONCRETE CENTER CURB TYPE D
 - (27) MULCHED SEEDING, U

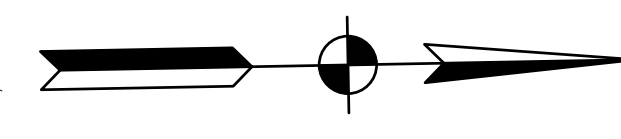


<p>RECOMMENDED FOR APPROVAL</p> <p>DESIGNED: J.P.H.</p> <p>CHECKED: J.L.B.</p>	<p>DESIGN ENGINEER</p> <p>DRAWN: A.M.</p> <p>CHECKED: J.P.H.</p>	<p>DATE</p>	<p>INDIANA DEPARTMENT OF TRANSPORTATION</p> <p>LINE G - S.R. 3</p> <p>PLAN AND PROFILE SHEET 6</p>
<p>HORIZONTAL SCALE: 1" = 30'</p> <p>VERTICAL SCALE: 1" = 10'</p> <p>SURVEY BOOK: N/A</p> <p>CONTRACT: R-39270</p>			<p>BRIDGE FILE: N/A</p> <p>DESIGNATION: 1593230</p> <p>SHEETS: 72 of 227</p> <p>PROJECT: 1593230</p>

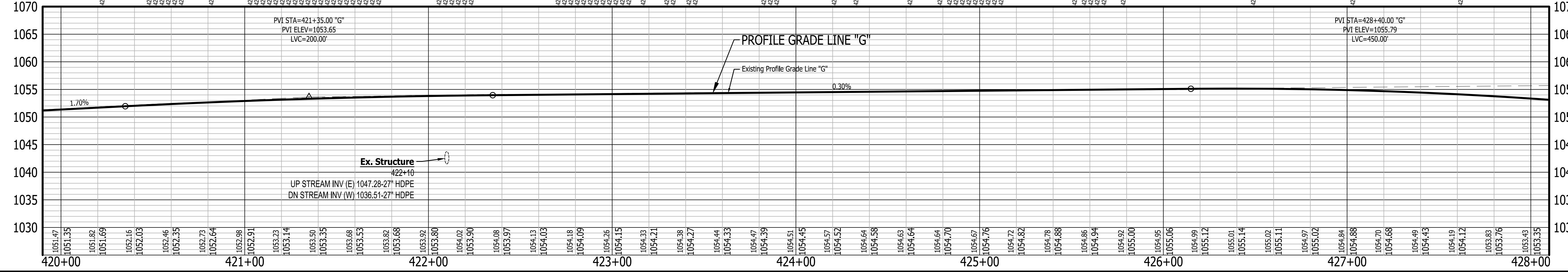
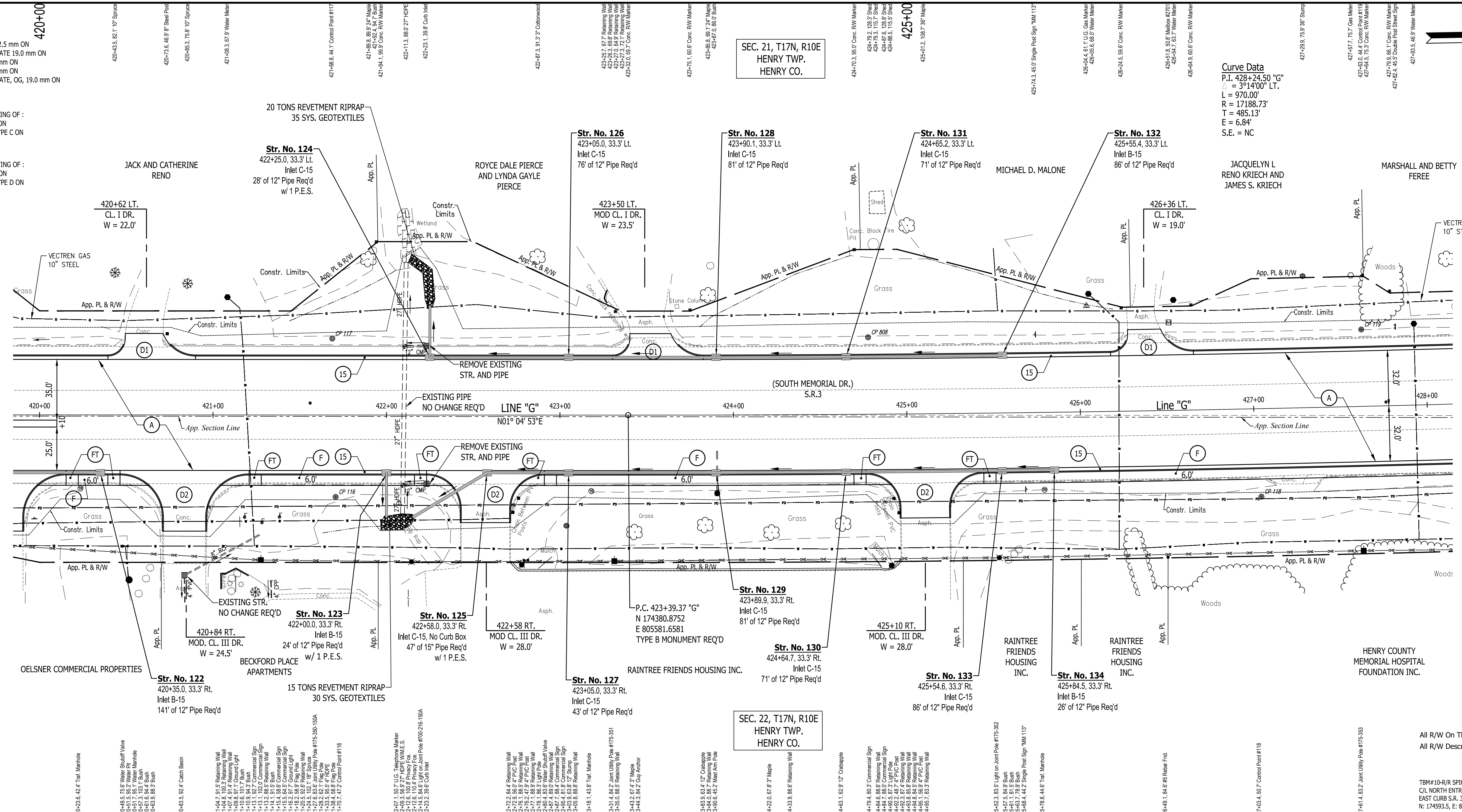
SEC. 21, T17N, R10E
HENRY TWP.
HENRY CO.

SEC. 22, T17N, R10E
HENRY TWP.
HENRY CO.

Curve Data
P.I. 428+24.50 "G"
L = 314'00" LT.
L = 970.00'
R = 17188.73'
T = 485.13'
E = 6.84'
S.E. = NC



- LEGEND**
- (A) 220#/SYD. QC/QA-HMA, 3, 70, SURFACE 12.5 mm ON 275#/SYD. QC/QA-HMA, 3, 70, INTERMEDIATE 19.0 mm ON 275#/SYD. QC/QA-HMA, 3, 64, BASE 19.0 mm ON 330#/SYD. QC/QA-HMA, 3, 64, BASE 19.0 mm ON 300#/SYD. QC/QA-HMA, 4, 76, INTERMEDIATE, OG, 19.0 mm ON 6 IN. COMPACTED AGGREGATE NO. 53 ON SUBGRADE TREATMENT, TYPE ID
 - (A) HMA FOR APPROACHES, TYPE C - CONSISTING OF : 220 LBS/SYD. HMA, SURFACE, TYPE C ON 275 LBS/SYD. HMA, INTERMEDIATE, TYPE C ON 605 LBS/SYD. HMA, BASE, TYPE C ON SUBGRADE TREATMENT, TYPE ID
 - (A) HMA FOR APPROACHES, TYPE D - CONSISTING OF : 220 LBS/SYD. HMA, SURFACE, TYPE D ON 275 LBS/SYD. HMA, INTERMEDIATE, TYPE D ON 880 LBS/SYD. HMA, BASE, TYPE D ON SUBGRADE TREATMENT, TYPE ID
 - (D1) PCCP FOR APPROACHES, 6 IN., ON DENSE GRADED SUBBASE, 6 IN., ON SUBGRADE TREATMENT TYPE II
 - (D2) PCCP FOR APPROACHES, 9 IN., ON DENSE GRADED SUBBASE, 6 IN., ON GEOGRID TYPE IB, ON SUBGRADE TREATMENT TYPE II
 - (D3) HMA FOR APPROACHES: 165 LBS/SYD. HMA, SURFACE, TYPE C
 - (F) SIDEWALK, CONCRETE, 4 IN.
 - (FT) SIDEWALK TRANSITION
 - (IS) ISLAND, CONCRETE, CURB, 4 IN.
 - (R6) CONCRETE SIDEWALK RAMP
 - (PC) PCCP PATCHING, FULL DEPTH
 - (PH) HMA PATCHING, FULL DEPTH, TYPE C
 - (13) CURB, INTEGRAL CONCRETE
 - (14) CURB, CONCRETE
 - (15) CURB AND GUTTER, CONCRETE
 - (16) CONCRETE CENTER CURB TYPE D
 - (27) MULCHED SEEDING, U



All R/W On This Sheet To Be As Shown.
All R/W Described From Line "G" Except As Shown.

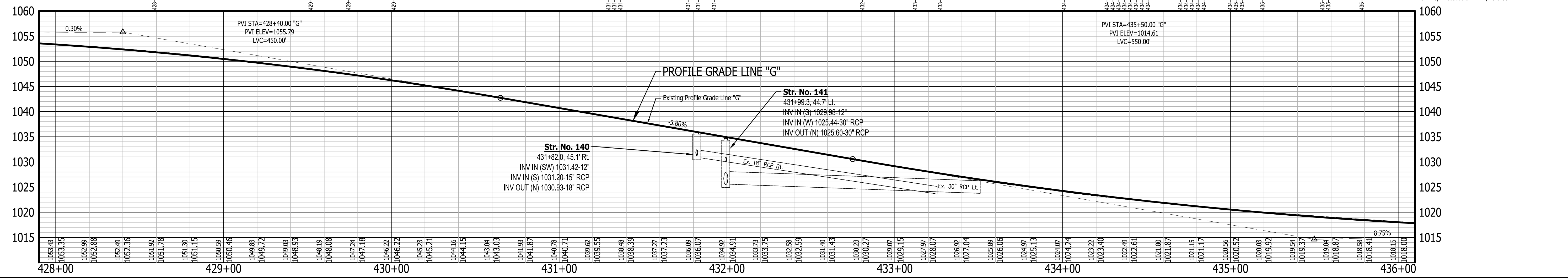
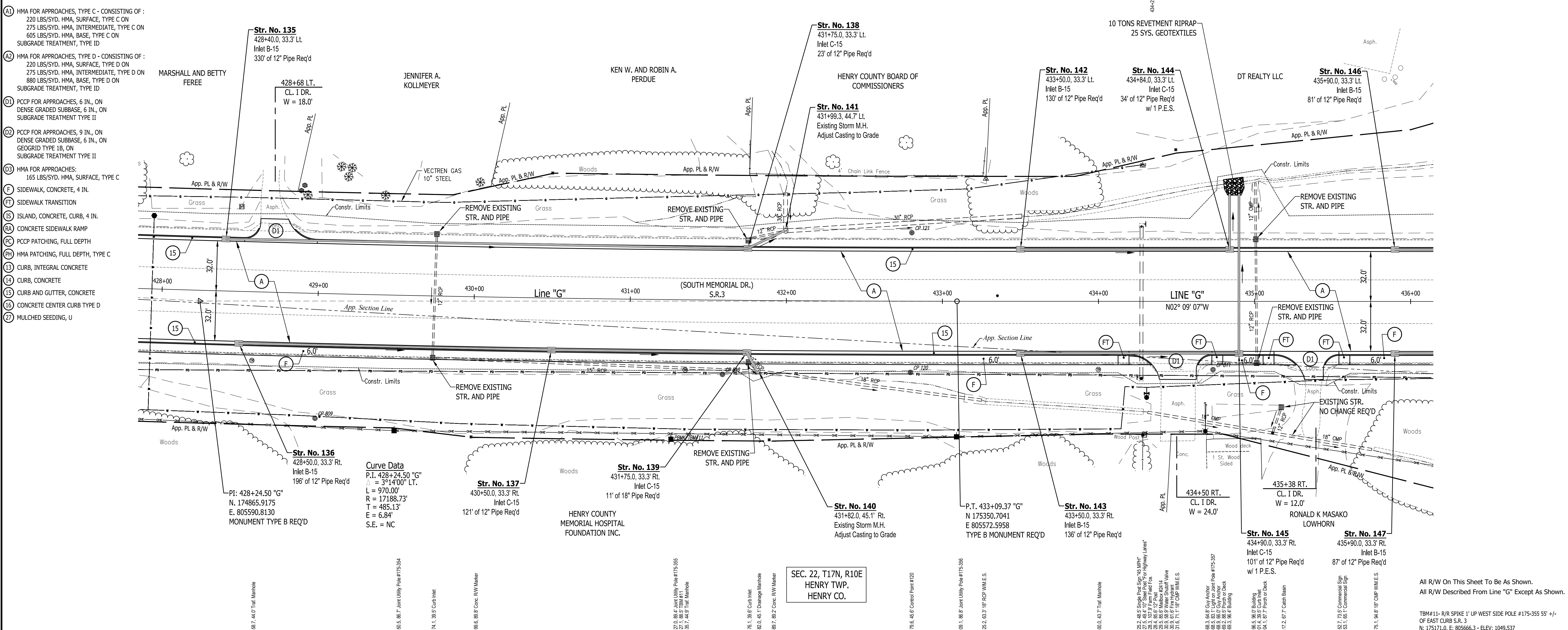
TRM# 10-R/R SPIKE 1' UP WEST SIDE POLE #175-352 40' +/- NORTH OF CL. NORTH ENTRY TO RAINTREE SQUARE APARTMENTS 40' +/- EAST OF EAST CURB S.R. 3
N: 174993.5, E: 805667.0 - ELEV: 1058.715

<p>116 NORTH: 174211.3840 EAST: 805625.7010</p> <p>117 NORTH: 174211.1300 EAST: 805635.3710</p> <p>118 NORTH: 174474.9940 EAST: 805635.3840</p> <p>119 NORTH: 174804.2770 EAST: 805540.0820</p>	<p>INDIANA DEPARTMENT OF TRANSPORTATION</p> <p>RECOMMENDED FOR APPROVAL</p> <p>DESIGNED: J.P.H. DRAWN: A.M.</p> <p>CHECKED: J.L.B. CHECKED: J.P.H.</p> <p>DESIGN ENGINEER DATE</p>	<table border="1" style="width: 100%; border-collapse: collapse;"> <tr> <td>HORIZONTAL SCALE</td> <td>BRIDGE FILE</td> </tr> <tr> <td>1" = 30'</td> <td>N/A</td> </tr> <tr> <td>VERTICAL SCALE</td> <td>DESIGNATION</td> </tr> <tr> <td>1" = 10'</td> <td>1593230</td> </tr> <tr> <td>SURVEY BOOK</td> <td>SHEETS</td> </tr> <tr> <td>N/A</td> <td>73 of 227</td> </tr> <tr> <td>CONTRACT</td> <td>PROJECT</td> </tr> <tr> <td>R-39270</td> <td>1593230</td> </tr> </table>	HORIZONTAL SCALE	BRIDGE FILE	1" = 30'	N/A	VERTICAL SCALE	DESIGNATION	1" = 10'	1593230	SURVEY BOOK	SHEETS	N/A	73 of 227	CONTRACT	PROJECT	R-39270	1593230
HORIZONTAL SCALE	BRIDGE FILE																	
1" = 30'	N/A																	
VERTICAL SCALE	DESIGNATION																	
1" = 10'	1593230																	
SURVEY BOOK	SHEETS																	
N/A	73 of 227																	
CONTRACT	PROJECT																	
R-39270	1593230																	

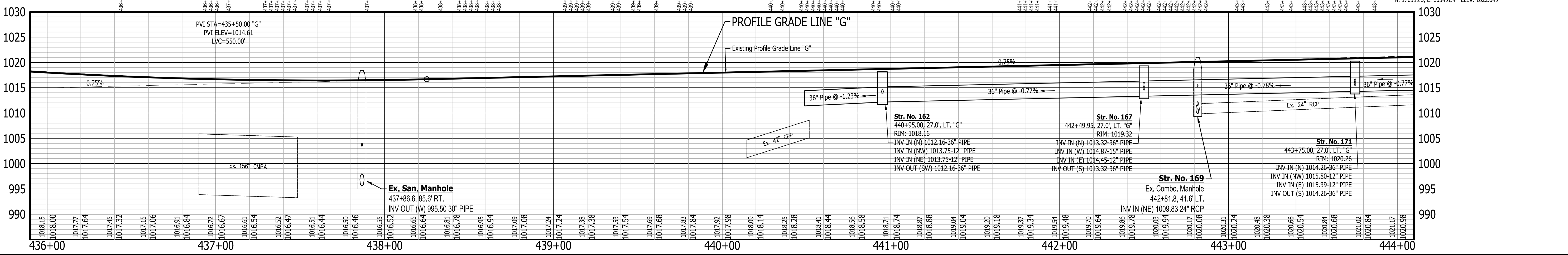
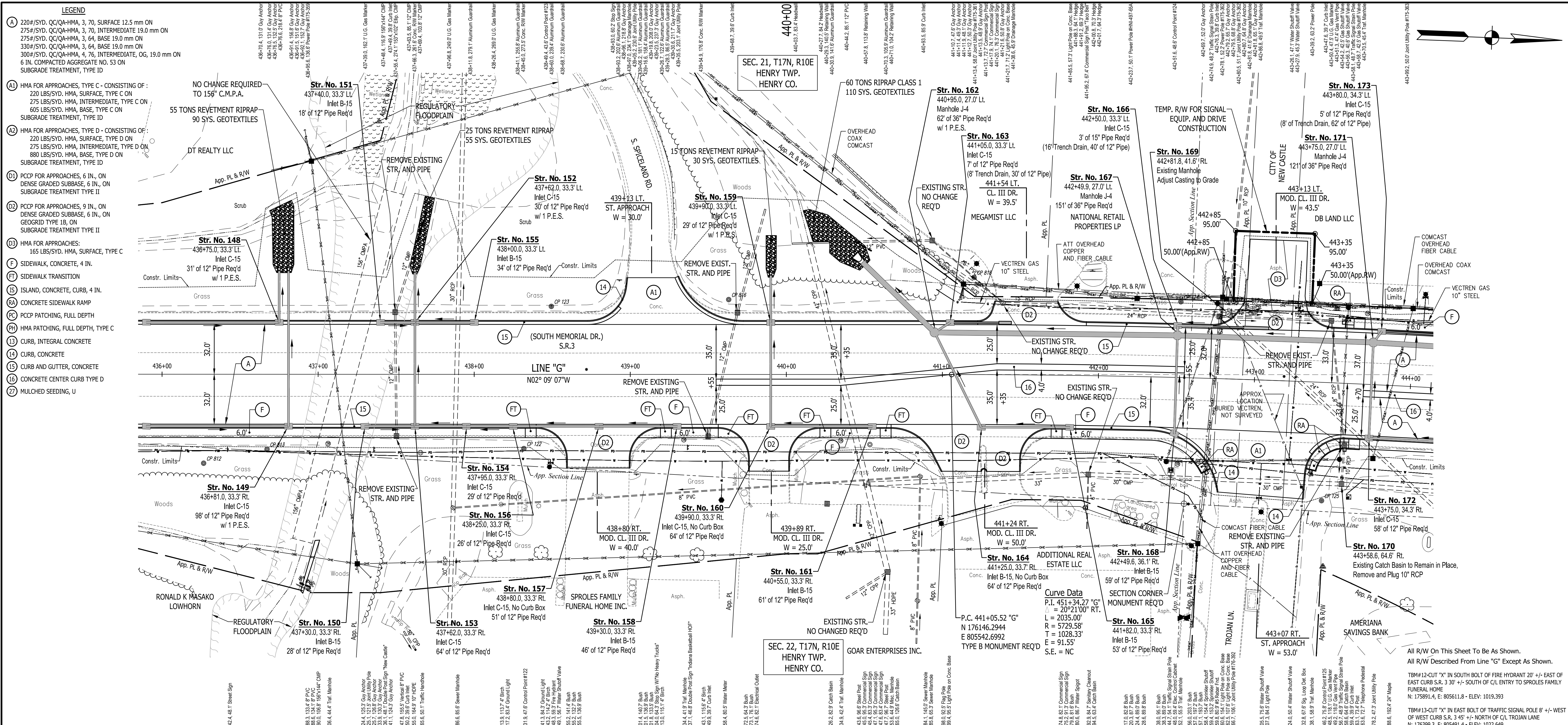
**LINE G - S.R. 3
PLAN AND PROFILE SHEET 7**

LEGEND

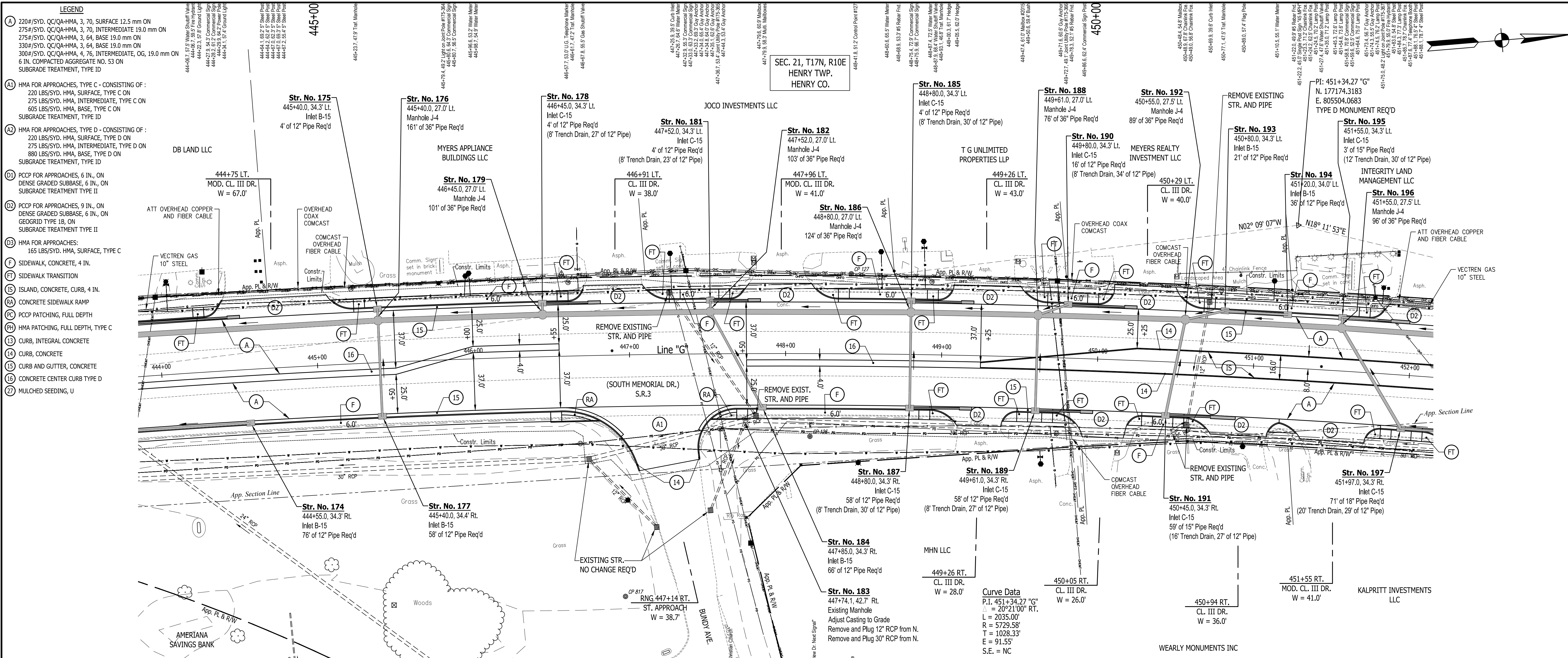
- (A) 220#/SYD, QC/QA-HMA, 3, 70, SURFACE 12.5 mm ON 275#/SYD, QC/QA-HMA, 3, 70, INTERMEDIATE 19.0 mm ON 275#/SYD, QC/QA-HMA, 3, 64, BASE 19.0 mm ON 300#/SYD, QC/QA-HMA, 4, 75, INTERMEDIATE, OG, 19.0 mm ON 6 IN. COMPACTED AGGREGATE NO. 53 ON SUBGRADE TREATMENT, TYPE ID
- (A1) HMA FOR APPROACHES, TYPE C - CONSISTING OF : 220 LBS/SYD, HMA, SURFACE, TYPE C ON 275 LBS/SYD, HMA, INTERMEDIATE, TYPE C ON 605 LBS/SYD, HMA, BASE, TYPE C ON SUBGRADE TREATMENT, TYPE ID
- (A2) HMA FOR APPROACHES, TYPE D - CONSISTING OF : 220 LBS/SYD, HMA, SURFACE, TYPE D ON 275 LBS/SYD, HMA, INTERMEDIATE, TYPE D ON 880 LBS/SYD, HMA, BASE, TYPE D ON SUBGRADE TREATMENT, TYPE ID
- (D1) PCPC FOR APPROACHES, 6 IN., ON DENSE GRADED SUBBASE, 6 IN., ON SUBGRADE TREATMENT TYPE II
- (D2) PCPC FOR APPROACHES, 9 IN., ON DENSE GRADED SUBBASE, 6 IN., ON GEGRID TYPE 1B, ON SUBGRADE TREATMENT TYPE II
- (D3) HMA FOR APPROACHES: 165 LBS/SYD, HMA, SURFACE, TYPE C
- (F) SIDEWALK, CONCRETE, 4 IN.
- (FT) SIDEWALK TRANSITION
- (IS) ISLAND, CONCRETE, CURB, 4 IN.
- (RA) CONCRETE SIDEWALK RAMP
- (PC) PCPC PATCHING, FULL DEPTH
- (PH) HMA PATCHING, FULL DEPTH, TYPE C
- (13) CURB, INTEGRAL CONCRETE
- (14) CURB, CONCRETE
- (15) CURB AND GUTTER, CONCRETE
- (16) CONCRETE CENTER CURB TYPE D
- (27) MULCHED SEEDING, U



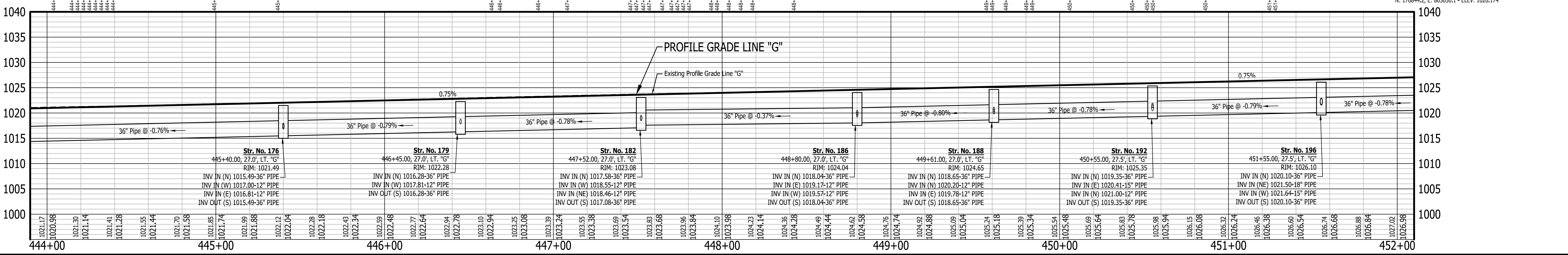
<p>RECOMMENDED FOR APPROVAL</p> <p>DESIGNED: J.P.H.</p> <p>CHECKED: J.L.B.</p>	<p>DESIGN ENGINEER</p> <p>DATE</p> <p>DRAWN: A.M.</p> <p>CHECKED: J.P.H.</p>	<p>INDIANA DEPARTMENT OF TRANSPORTATION</p> <p>LINE G - S.R. 3</p> <p>PLAN AND PROFILE SHEET 8</p>	<p>HORIZONTAL SCALE</p> <p>1" = 30'</p> <p>VERTICAL SCALE</p> <p>1" = 10'</p> <p>SURVEY BOOK</p> <p>N/A</p> <p>CONTRACT</p> <p>R-39270</p>	<p>BRIDGE FILE</p> <p>N/A</p> <p>DESIGNATION</p> <p>1593230</p> <p>SHEETS</p> <p>74 of 227</p> <p>PROJECT</p> <p>1593230</p>
--	--	---	--	--



<p>122 NORTH: 175874.6250 EAST: 805600.5620 P.O.P.T. 438+31.87, 47.62' RT. Line "G"</p>	<p>123 NORTH: 175888.7580 EAST: 805508.7690 P.O.P.T. 438+49.44, 43.58' LT. Line "G"</p>	<p>124 NORTH: 176291.7150 EAST: 805490.5090 P.O.P.T. 442+51.58, 48.56' LT. Line "G"</p>	<p>125 NORTH: 176386.5900 EAST: 805614.4960 P.O.P.T. 443+46.20, 75.80' RT. Line "G"</p>	<p>RECOMMENDED FOR APPROVAL</p> <p>DESIGNED: J.P.H. DRAWN: A.M.</p> <p>CHECKED: J.L.B. CHECKED: J.P.H.</p>	<p>INDIANA DEPARTMENT OF TRANSPORTATION</p> <p>LINE G - S.R. 3 PLAN AND PROFILE SHEET 9</p>	<p>HORIZONTAL SCALE: 1" = 30'</p> <p>VERTICAL SCALE: 1" = 10'</p> <p>SURVEY BOOK: N/A</p> <p>CONTRACT: R-39270</p>	<p>BRIDGE FILE: N/A</p> <p>DESIGNATION: 1593230</p> <p>SHEETS: 75 of 227</p> <p>PROJECT: 1593230</p>
--	--	--	--	--	--	--	--

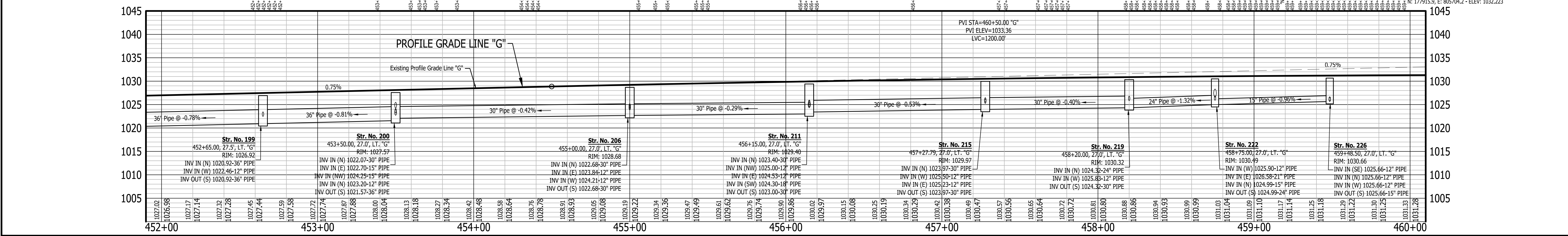
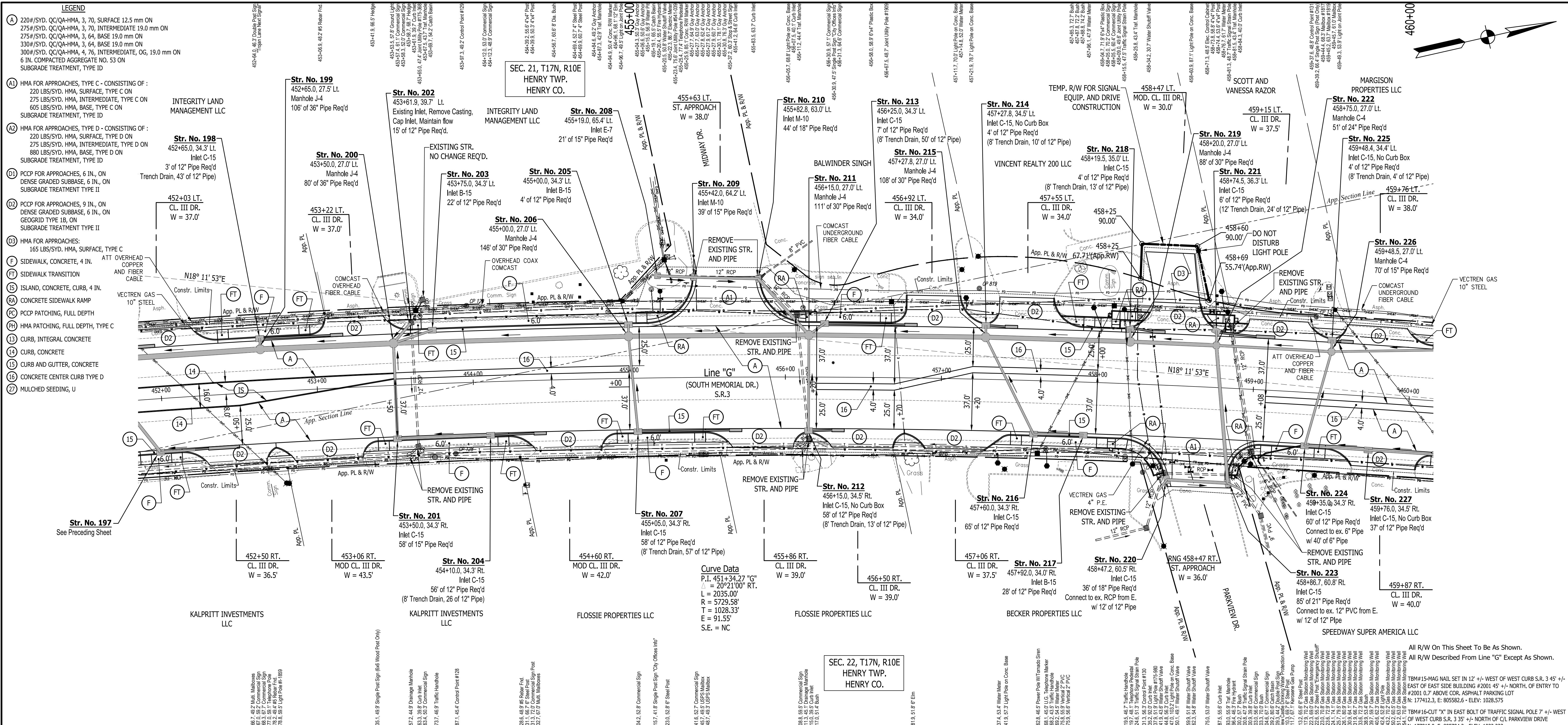


- LEGEND**
- (A) 220#/SYD. CC/QA-HMA, 3, 70, SURFACE 12.5 mm ON 275#/SYD. CC/QA-HMA, 3, 70, INTERMEDIATE 19.0 mm ON 330#/SYD. CC/QA-HMA, 3, 64, BASE 19.0 mm ON 300#/SYD. CC/QA-HMA, 4, 76, INTERMEDIATE, OG, 19.0 mm ON 6 IN. COMPACTED AGGREGATE NO. 53 ON SUBGRADE TREATMENT, TYPE ID
 - (A1) HMA FOR APPROACHES, TYPE C - CONSISTING OF : 220 LBS/SYD. HMA, SURFACE, TYPE C ON 275 LBS/SYD. HMA, INTERMEDIATE, TYPE C ON 605 LBS/SYD. HMA, BASE, TYPE C ON SUBGRADE TREATMENT, TYPE ID
 - (A2) HMA FOR APPROACHES, TYPE D - CONSISTING OF : 220 LBS/SYD. HMA, SURFACE, TYPE D ON 275 LBS/SYD. HMA, INTERMEDIATE, TYPE D ON 880 LBS/SYD. HMA, BASE, TYPE D ON SUBGRADE TREATMENT, TYPE ID
 - (D1) PCCP FOR APPROACHES, 6 IN., ON DENSE GRADED SUBBASE, 6 IN., ON SUBGRADE TREATMENT TYPE II
 - (D2) PCCP FOR APPROACHES, 9 IN., ON DENSE GRADED SUBBASE, 6 IN., ON GEGRID TYPE 1B, ON SUBGRADE TREATMENT TYPE II
 - (D3) HMA FOR APPROACHES: 165 LBS/SYD. HMA, SURFACE, TYPE C
 - (F) SIDEWALK, CONCRETE, 4 IN.
 - (FT) SIDEWALK TRANSITION
 - (IT) ISLAND, CONCRETE, CURB, 4 IN.
 - (RA) CONCRETE SIDEWALK RAMP
 - (PC) PCCP PATCHING, FULL DEPTH
 - (PH) HMA PATCHING, FULL DEPTH, TYPE C
 - (13) CURB, INTEGRAL CONCRETE
 - (14) CURB, CONCRETE
 - (15) CURB AND GUTTER, CONCRETE
 - (16) CONCRETE CENTER CURB TYPE D
 - (27) MULCHED SEEDING, U

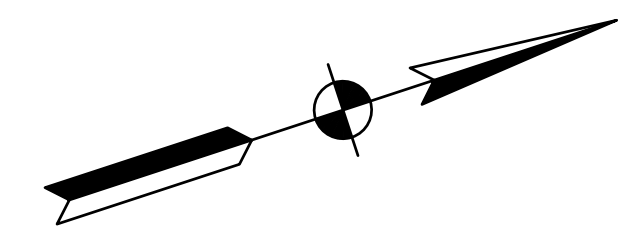


<p>126 NORTH: 176851.3190 EAST: 805612.8340</p> <p>127 NORTH: 176856.4190 EAST: 805511.2700</p>	<p>INDIANA DEPARTMENT OF TRANSPORTATION</p> <p>LINE G - S.R. 3</p> <p>PLAN AND PROFILE SHEET 10</p>	<p>HORIZONTAL SCALE: 1" = 30'</p> <p>VERTICAL SCALE: 1" = 10'</p> <p>SURVEY BOOK: N/A</p> <p>CONTRACT: R-39270</p>	<p>BRIDGE FILE: N/A</p> <p>DESIGNATION: 1593230</p> <p>SHEETS: 76 of 227</p> <p>PROJECT: 1593230</p>
<p>RECOMMENDED FOR APPROVAL</p> <p>DESIGNED: J.P.H. CHECKED: J.L.B.</p> <p>DRAWN: A.M. CHECKED: J.P.H.</p>		<p>DESIGN ENGINEER: DATE</p>	

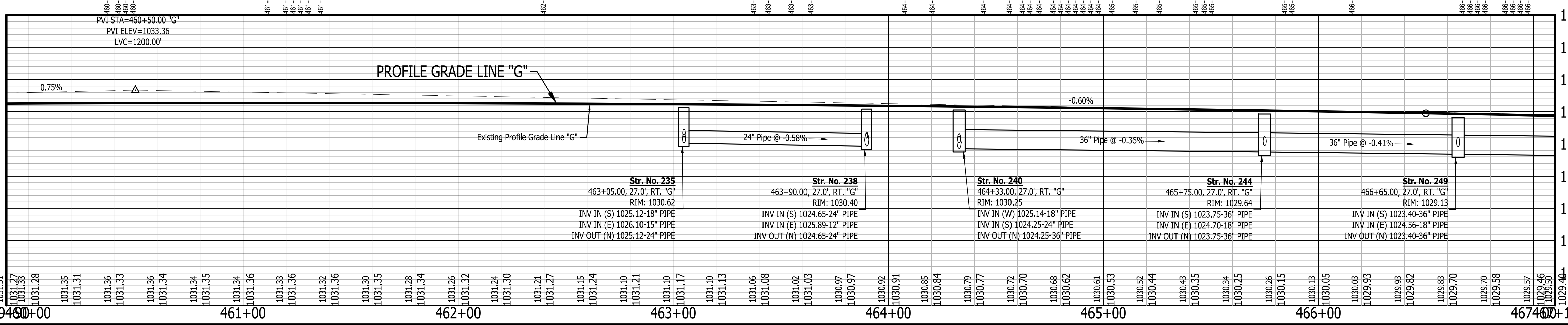
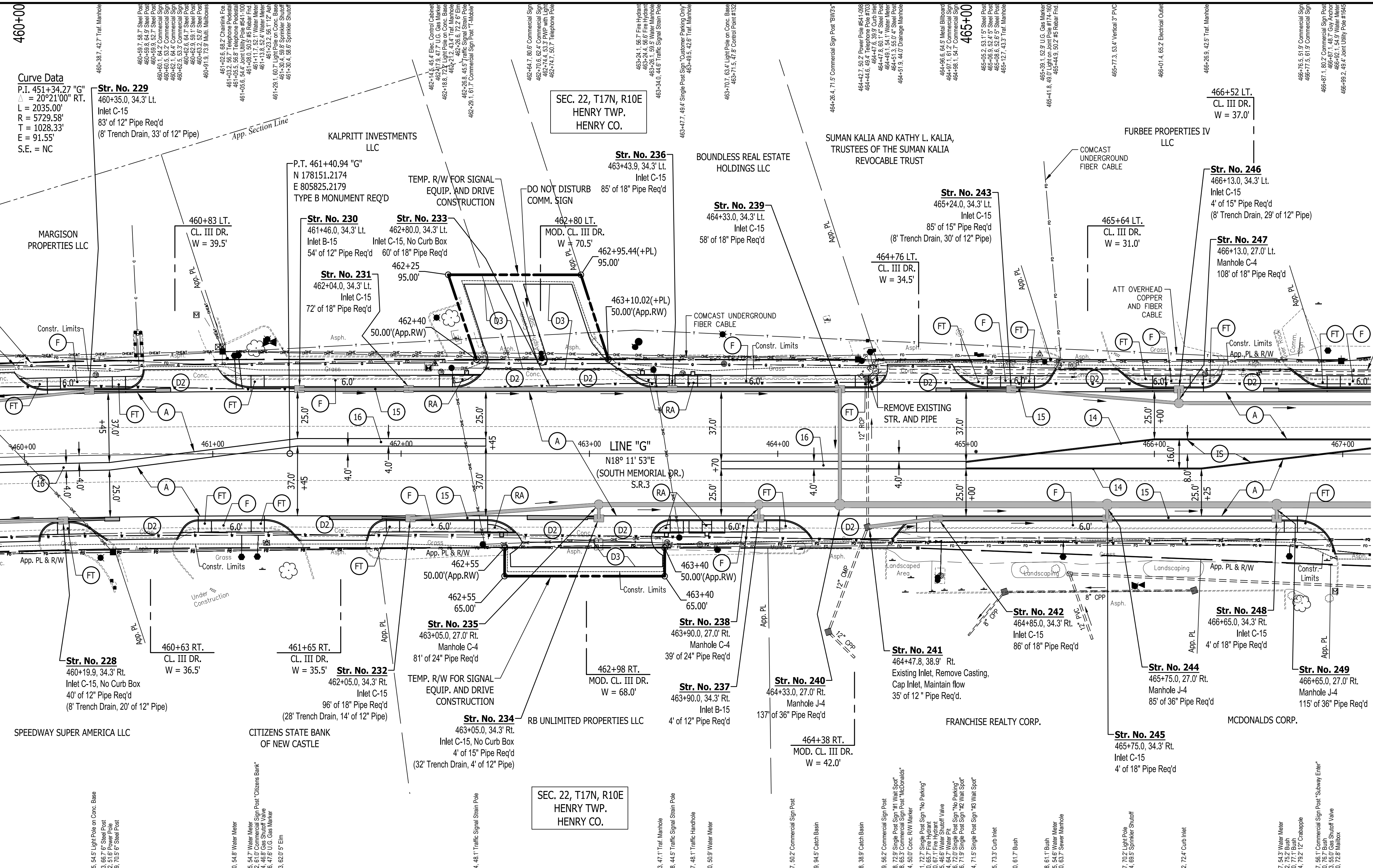
All R/W On This Sheet To Be As Shown.
 All R/W Described From Line "G" Except As Shown.
 TB#14-MAG NAIL SET IN TOP OF CONC. R/W MARKER 80' +/- NORTH OF C/L BUNDY AVE. 35' +/- EAST OF EAST CURB S.R. 3
 N: 176844.2, E: 805630.1 - ELEV: 1026.174



<p>RECOMMENDED FOR APPROVAL</p> <p>DESIGNED: J.P.H. DRAWN: A.M.</p> <p>CHECKED: J.L.B. CHECKED: J.P.H.</p>		<p>DESIGN ENGINEER DATE</p>	
<p>INDIANA DEPARTMENT OF TRANSPORTATION</p> <p>LINE G - S.R. 3</p> <p>PLAN AND PROFILE SHEET 11</p>		<p>HORIZONTAL SCALE BRIDGE FILE</p> <p>1" = 30' N/A</p> <p>VERTICAL SCALE DESIGNATION</p> <p>1" = 10' 1593230</p> <p>SURVEY BOOK SHEETS</p> <p>N/A 77 of 227</p> <p>CONTRACT PROJECT</p> <p>R-39270 1593230</p>	

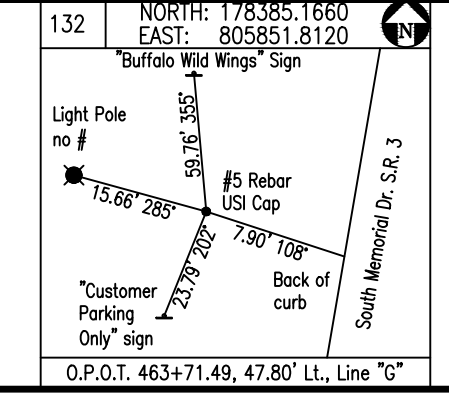


- LEGEND**
- (A) 220#/SYD. QC/QA-HMA, 3, 70, SURFACE 12.5 mm ON 275#/SYD. QC/QA-HMA, 3, 64, BASE 19.0 mm ON 330#/SYD. QC/QA-HMA, 3, 64, BASE 19.0 mm ON 300#/SYD. QC/QA-HMA, 3, 76, INTERMEDIATE, OG, 19.0 mm ON 6 IN. COMPACTED AGGREGATE NO. 53 ON SUBGRADE TREATMENT, TYPE ID
 - (AI) HMA FOR APPROACHES, TYPE C - CONSISTING OF : 220 LBS/SYD. HMA, SURFACE, TYPE C ON 275 LBS/SYD. HMA, INTERMEDIATE, TYPE C ON 605 LBS/SYD. HMA, BASE, TYPE C ON SUBGRADE TREATMENT, TYPE ID
 - (AII) HMA FOR APPROACHES, TYPE D - CONSISTING OF : 220 LBS/SYD. HMA, SURFACE, TYPE D ON 275 LBS/SYD. HMA, INTERMEDIATE, TYPE D ON 880 LBS/SYD. HMA, BASE, TYPE D ON SUBGRADE TREATMENT, TYPE ID
 - (D1) PCPP FOR APPROACHES, 6 IN., ON DENSE GRADED SUBBASE, 6 IN., ON SUBGRADE TREATMENT TYPE II
 - (D2) PCPP FOR APPROACHES, 9 IN., ON DENSE GRADED SUBBASE, 6 IN., ON GEGRID TYPE 1B, ON SUBGRADE TREATMENT TYPE II
 - (D3) HMA FOR APPROACHES: 165 LBS/SYD. HMA, SURFACE, TYPE C
 - (E) SIDEWALK, CONCRETE, 4 IN.
 - (FT) SIDEWALK TRANSITION
 - (IS) ISLAND, CONCRETE, CURB, 4 IN.
 - (RA) CONCRETE SIDEWALK RAMP
 - (RC) PCPP PATCHING, FULL DEPTH
 - (PH) HMA PATCHING, FULL DEPTH, TYPE C
 - (13) CURB, INTEGRAL CONCRETE
 - (14) CURB, CONCRETE
 - (15) CURB AND GUTTER, CONCRETE
 - (16) CONCRETE CENTER CURB TYPE D
 - (27) MULCHED SEEDING, U



All R/W On This Sheet To Be As Shown.
All R/W Described From Line "G" Except As Shown.

TBM#17-MAG NAIL SET IN S.E. COR. OF CONC. BASE FOR BUFFALO WILD WINGS SIGN 30' +/- WEST OF WEST CURB S.R. 3
N: 178442.6, E: 805847.9 - ELEV: 1031.039

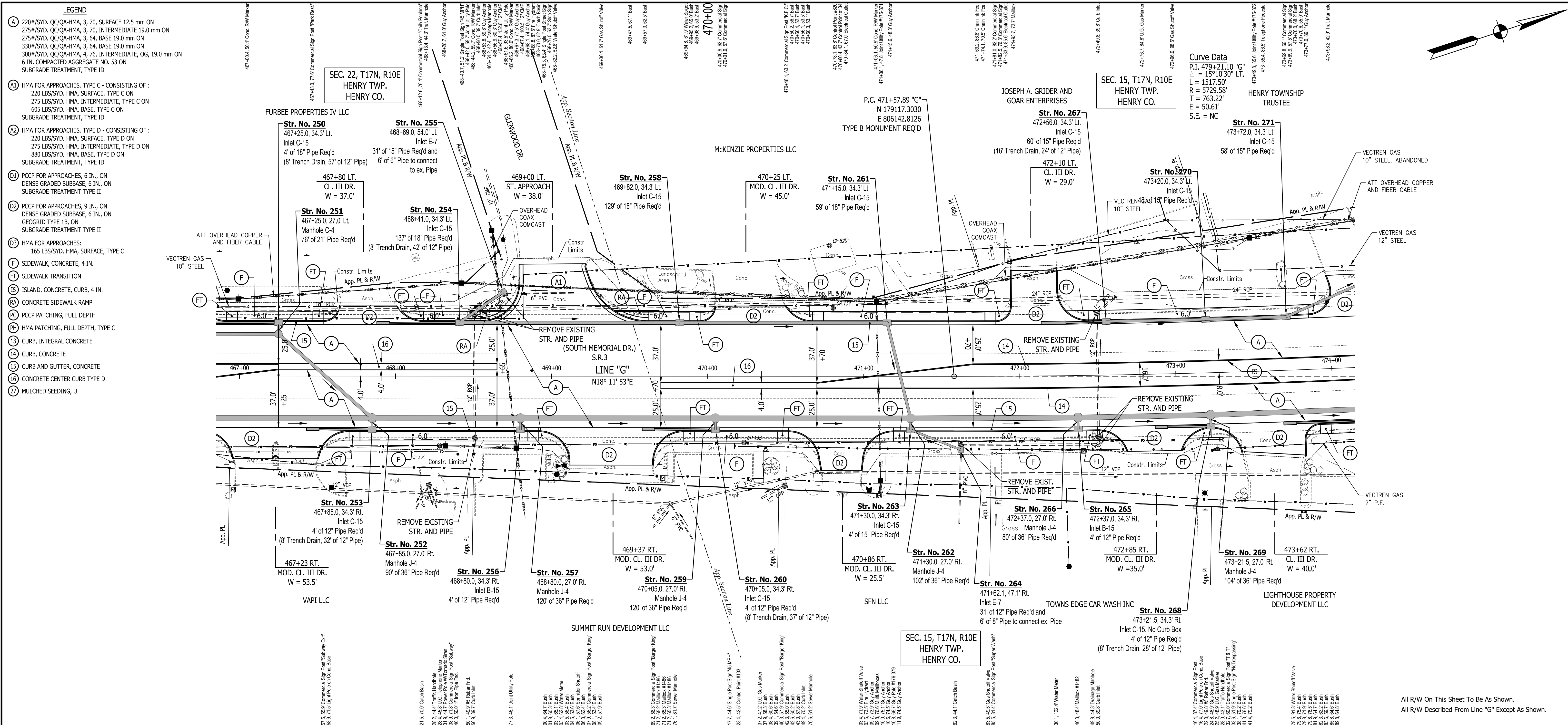


RECOMMENDED FOR APPROVAL	DESIGN ENGINEER	DATE
DESIGNED: J.P.H.	DRAWN: A.M.	
CHECKED: J.L.B.	CHECKED: J.P.H.	

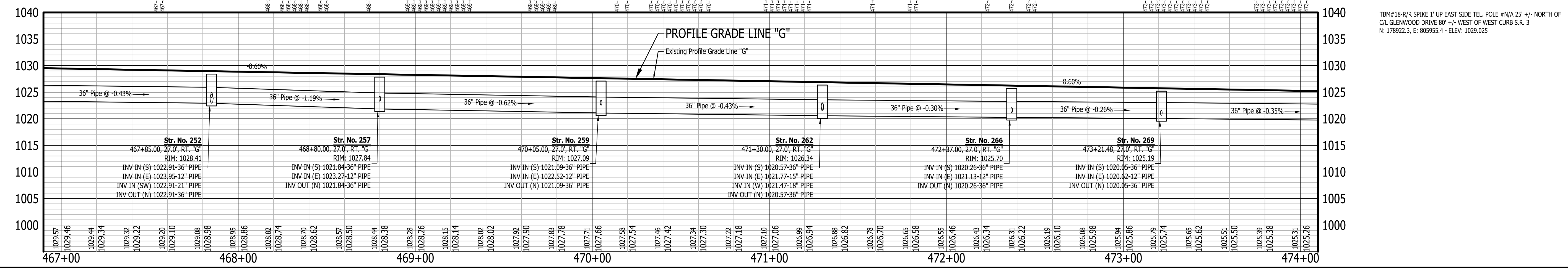
INDIANA
DEPARTMENT OF TRANSPORTATION

LINE G - S.R. 3
PLAN AND PROFILE SHEET 12

HORIZONTAL SCALE	BRIDGE FILE
1" = 30'	N/A
VERTICAL SCALE	DESIGNATION
1" = 10'	1593230
SURVEY BOOK	SHEETS
N/A	78 of 227
CONTRACT	PROJECT
R-39270	1593230



- LEGEND**
- (A) 220#/SYD. QC/QA-HMA, 3, 70, SURFACE 12.5 mm ON 275#/SYD. QC/QA-HMA, 3, 70, INTERMEDIATE 19.0 mm ON 275#/SYD. QC/QA-HMA, 3, 64, BASE 19.0 mm ON 330#/SYD. QC/QA-HMA, 3, 64, BASE 19.0 mm ON 300#/SYD. QC/QA-HMA, 4, 76, INTERMEDIATE, OG, 19.0 mm ON 6 IN. COMPACTED AGGREGATE NO. 53 ON SUBGRADE TREATMENT, TYPE ID
 - (AA) HMA FOR APPROACHES, TYPE C - CONSISTING OF : 220 LBS./SYD. HMA, SURFACE, TYPE C ON 275 LBS./SYD. HMA, INTERMEDIATE, TYPE C ON 605 LBS./SYD. HMA, BASE, TYPE C ON SUBGRADE TREATMENT, TYPE ID
 - (AD) HMA FOR APPROACHES, TYPE D - CONSISTING OF : 220 LBS./SYD. HMA, SURFACE, TYPE D ON 275 LBS./SYD. HMA, INTERMEDIATE, TYPE D ON 880 LBS./SYD. HMA, BASE, TYPE D ON SUBGRADE TREATMENT, TYPE ID
 - (DI) PCCP FOR APPROACHES, 6 IN., ON DENSE GRADED SUBBASE, 6 IN., ON SUBGRADE TREATMENT TYPE II
 - (D2) PCCP FOR APPROACHES, 9 IN., ON DENSE GRADED SUBBASE, 6 IN., ON GEOGRID TYPE 1B, ON SUBGRADE TREATMENT TYPE II
 - (D3) HMA FOR APPROACHES: 165 LBS./SYD. HMA, SURFACE, TYPE C
 - (F) SIDEWALK, CONCRETE, 4 IN.
 - (FT) SIDEWALK TRANSITION
 - (IS) ISLAND, CONCRETE, CURB, 4 IN.
 - (RA) CONCRETE SIDEWALK RAMP
 - (PC) PCCP PATCHING, FULL DEPTH
 - (PH) HMA PATCHING, FULL DEPTH, TYPE C
 - (13) CURB, INTEGRAL CONCRETE
 - (14) CURB, CONCRETE
 - (15) CURB AND GUTTER, CONCRETE
 - (16) CONCRETE CENTER CURB TYPE D
 - (22) MULCHED SEEDING, U



RECOMMENDED FOR APPROVAL

DESIGNED: J.P.H. DRAWN: A.M.

CHECKED: J.L.B. CHECKED: J.P.H.

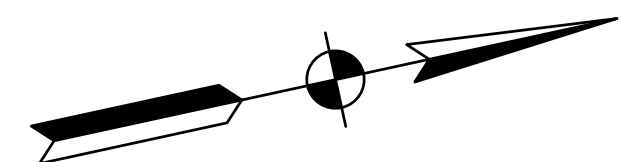
INDIANA
DEPARTMENT OF TRANSPORTATION

LINE G - S.R. 3
PLAN AND PROFILE SHEET 13

HORIZONTAL SCALE	BRIDGE FILE
1" = 30'	N/A
VERTICAL SCALE	DESIGNATION
1" = 10'	1593230
SURVEY BOOK	SHEETS
N/A	79 of 227
CONTRACT	PROJECT
R-39270	1593230

All R/W On This Sheet To Be As Shown.
All R/W Described From Line "G" Except As Shown.

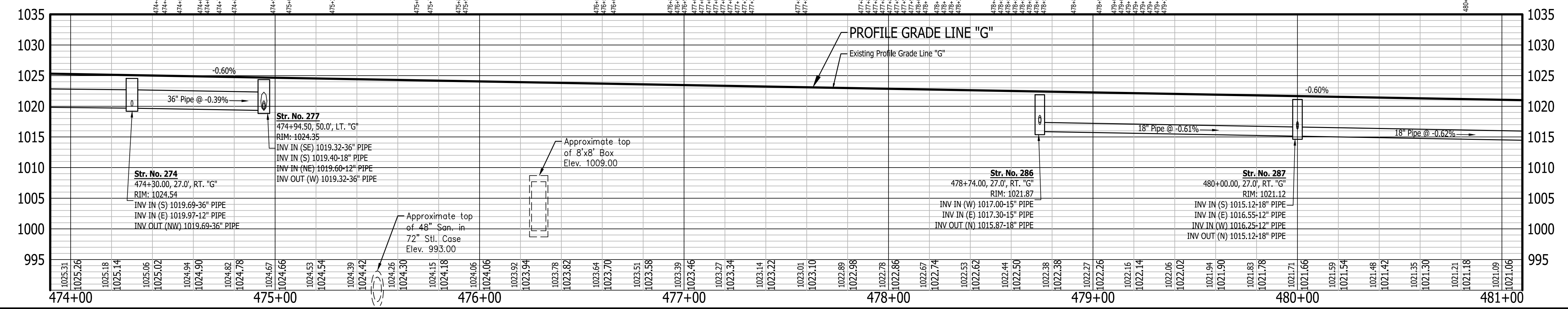
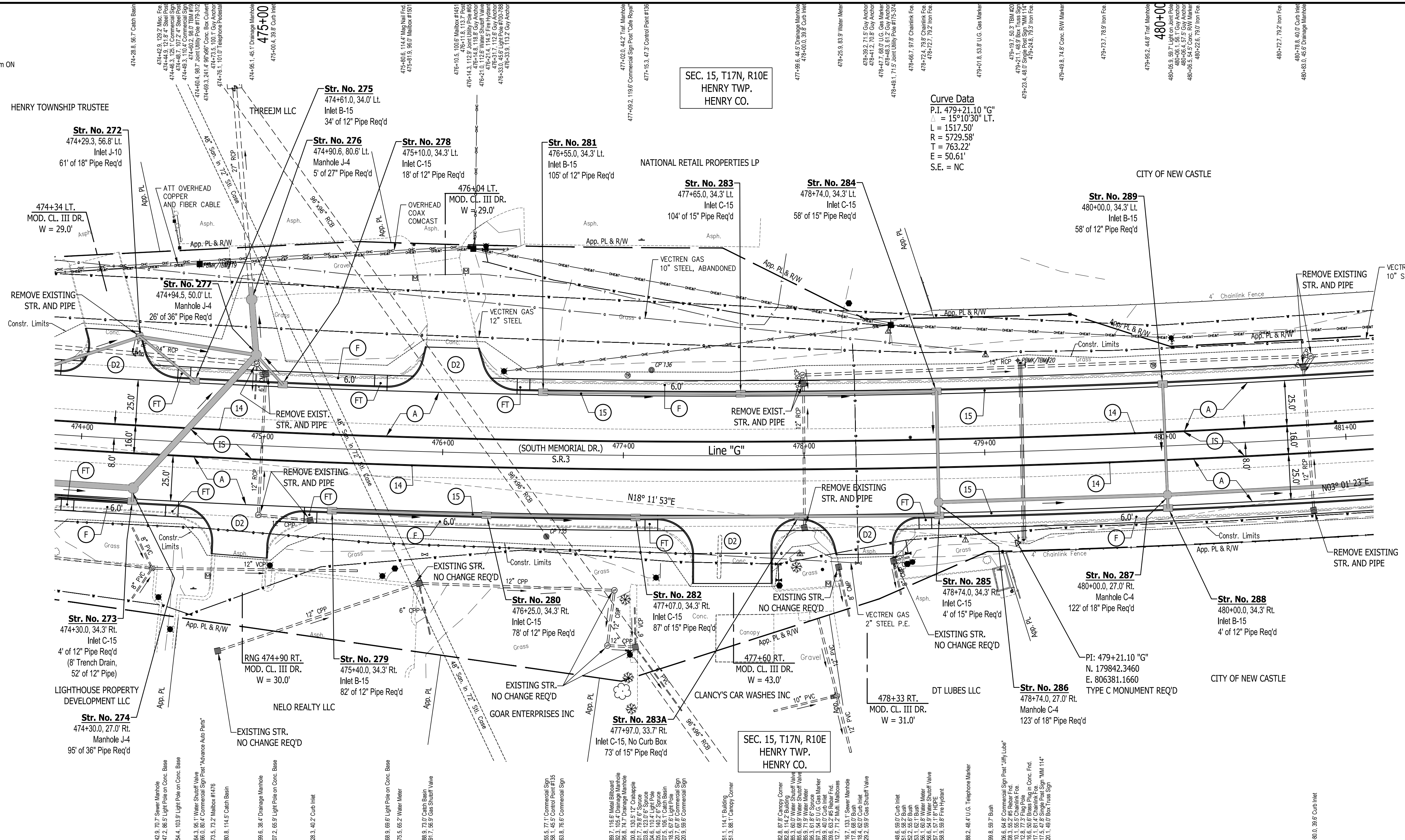
TBM#18-R/S SPIKE 1' UP EAST SIDE TIE POLE #N/A 25' +/- NORTH OF
CL GLENWOOD DRIVE 80' +/- WEST OF WEST CURB S.R. 3
N: 178922.3, E: 805955.4 - ELEV: 1029.025



SEC. 15, T17N, R10E
HENRY TWP.
HENRY CO.

Curve Data
P.I. 479+21.10 "G"
= 15°10'30" LT.
L = 1517.50'
R = 5729.58'
T = 763.22'
E = 50.61'
S.E. = NC

- LEGEND**
- (A) 220#/SYD. CC/QA-HMA, 3, 70, SURFACE 12.5 mm ON 275#/SYD. CC/QA-HMA, 3, 70, INTERMEDIATE 19.0 mm ON 275#/SYD. CC/QA-HMA, 3, 64, BASE 19.0 mm ON 330#/SYD. CC/QA-HMA, 3, 64, BASE 19.0 mm ON 300#/SYD. CC/QA-HMA, 4, 76, INTERMEDIATE, OG, 19.0 mm ON 6 IN. COMPACTED AGGREGATE NO. 53 ON SUBGRADE TREATMENT, TYPE ID
 - (AI) HMA FOR APPROACHES, TYPE C - CONSISTING OF : 220 LBS/SYD. HMA, SURFACE, TYPE C ON 275 LBS/SYD. HMA, INTERMEDIATE, TYPE C ON 605 LBS/SYD. HMA, BASE, TYPE C ON SUBGRADE TREATMENT, TYPE ID
 - (AII) HMA FOR APPROACHES, TYPE D - CONSISTING OF : 220 LBS/SYD. HMA, SURFACE, TYPE D ON 275 LBS/SYD. HMA, INTERMEDIATE, TYPE D ON 880 LBS/SYD. HMA, BASE, TYPE D ON SUBGRADE TREATMENT, TYPE ID
 - (D) PCCP FOR APPROACHES, 6 IN., ON DENSE GRADED SUBBASE, 6 IN., ON SUBGRADE TREATMENT TYPE II
 - (DII) PCCP FOR APPROACHES, 9 IN., ON DENSE GRADED SUBBASE, 6 IN., ON GEOGRID TYPE 1B, ON SUBGRADE TREATMENT TYPE II
 - (DIII) HMA FOR APPROACHES: 165 LBS/SYD. HMA, SURFACE, TYPE C
 - (F) SIDEWALK, CONCRETE, 4 IN.
 - (FT) SIDEWALK TRANSITION
 - (IS) ISLAND, CONCRETE, CURB, 4 IN.
 - (RA) CONCRETE SIDEWALK RAMP
 - (PC) PCPP PATCHING, FULL DEPTH
 - (PH) HMA PATCHING, FULL DEPTH, TYPE C
 - (13) CURB, INTEGRAL CONCRETE
 - (14) CURB, CONCRETE
 - (15) CURB AND GUTTER, CONCRETE
 - (16) CONCRETE CENTER CURB TYPE D
 - (22) MULCHED SEEDING, U



All R/W On This Sheet To Be As Shown.
All R/W Described From Line "G" Except As Shown.

TBM#19-R/SPIKE 1' UP EAST SIDE POLE #179-312 60' +/- WEST OF WEST CURB S.R. 3 35' +/- NORTH OF C/L ENTRY TO THE PAINT PARTY PARLOR
N: 179432.4, E: 806135.1 - ELEV: 1025.612

TBM#20-MAG NAIL SET IN S.W. COR. CONC. BASE FOR OVERHEAD HIGHWAY SIGN 11' +/- WEST OF WEST CURB S.R. 3 ACROSS S.R. 3 FROM JIFFY LUBE OIL CHANGE
N: 179864.3, E: 806282.5 - ELEV: 1022.490

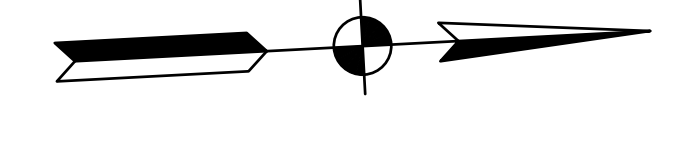


RECOMMENDED FOR APPROVAL	DESIGN ENGINEER	DATE
DESIGNED: J.P.H.	DRAWN: A.M.	
CHECKED: J.L.B.	CHECKED: J.P.H.	

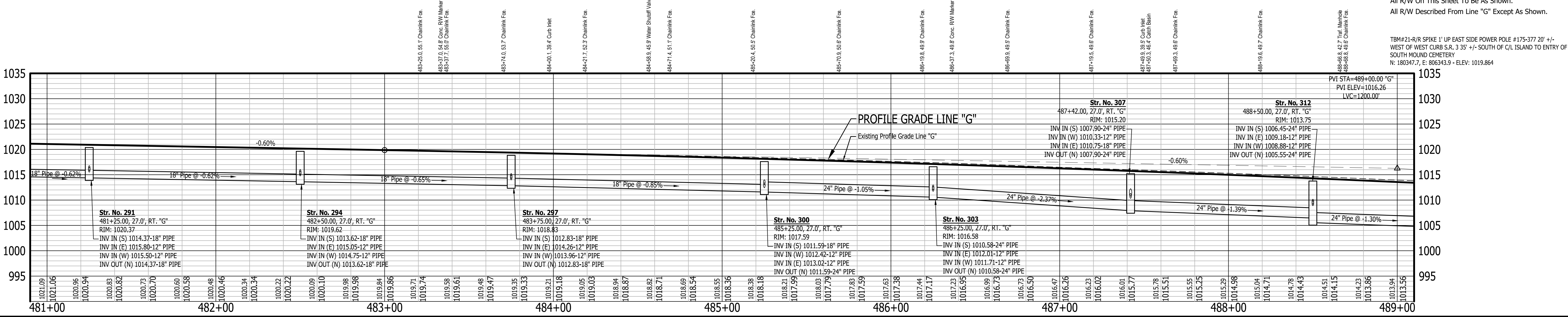
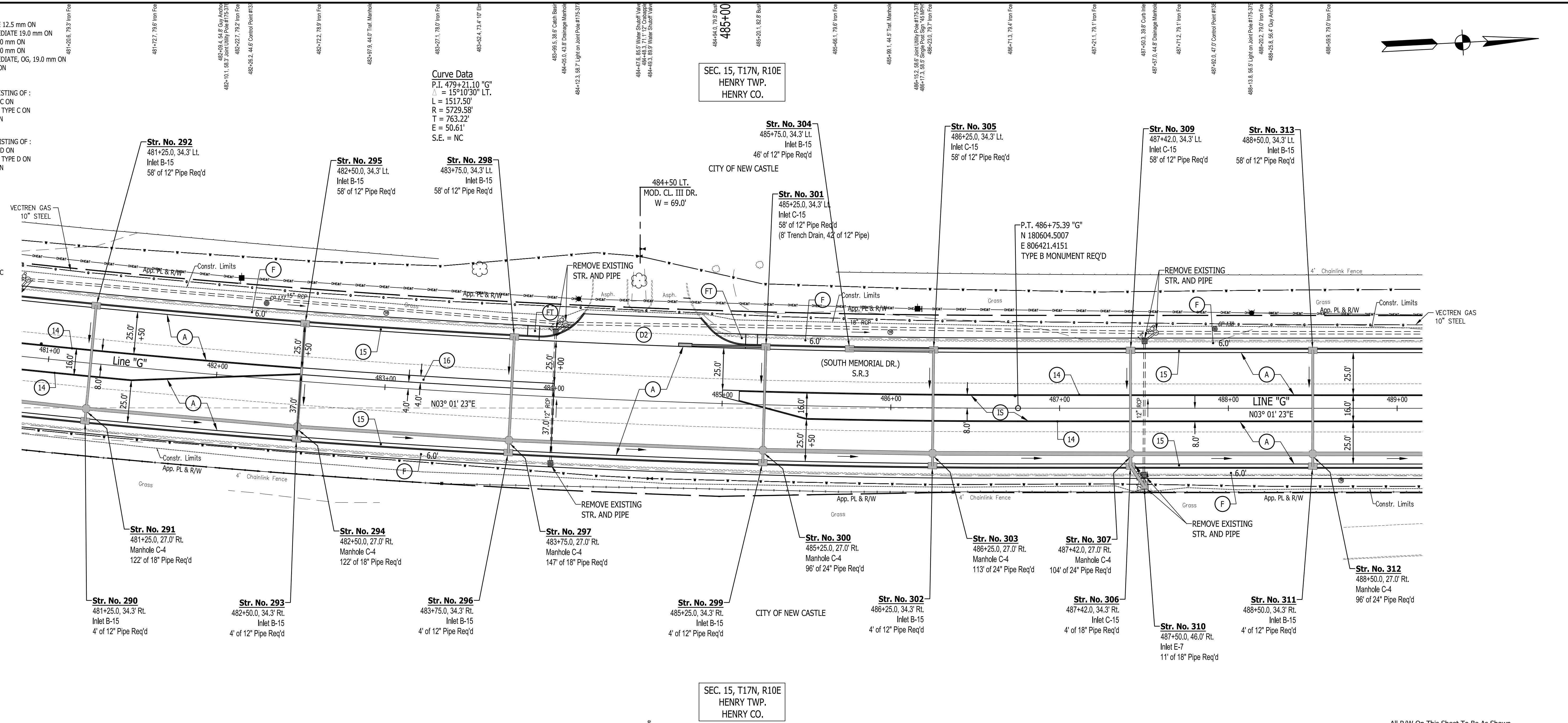
**INDIANA
DEPARTMENT OF TRANSPORTATION**

**LINE G - S.R. 3
PLAN AND PROFILE SHEET 14**

HORIZONTAL SCALE	BRIDGE FILE
1" = 30'	N/A
VERTICAL SCALE	DESIGNATION
1" = 10'	1593230
SURVEY BOOK	SHEETS
N/A	80 of 227
CONTRACT	PROJECT
R-39270	1593230

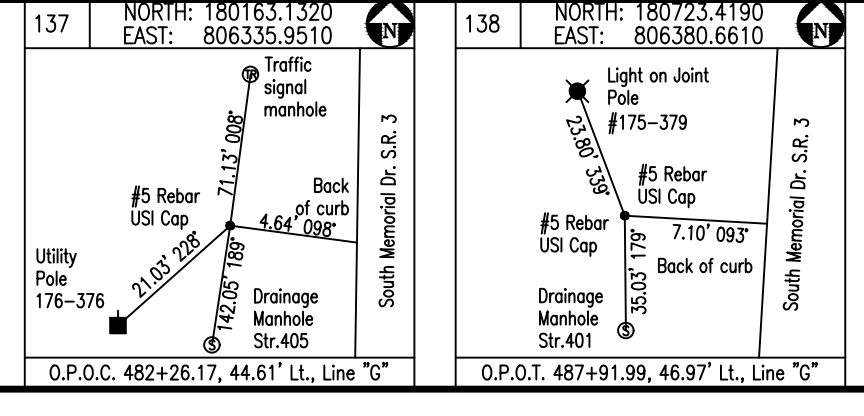


- LEGEND**
- (A) 220#/SYD. CC/QA-HMA, 3, 70, SURFACE 12.5 mm ON 275#/SYD. CC/QA-HMA, 3, 70, INTERMEDIATE 19.0 mm ON 330#/SYD. CC/QA-HMA, 3, 64, BASE 19.0 mm ON 300#/SYD. CC/QA-HMA, 4, 76, INTERMEDIATE, OG, 19.0 mm ON 6 IN. COMPACTED AGGREGATE NO. 53 ON SUBGRADE TREATMENT, TYPE ID
 - (A1) HMA FOR APPROACHES, TYPE C - CONSISTING OF : 220 LBS./SYD. HMA, SURFACE, TYPE C ON 275 LBS./SYD. HMA, INTERMEDIATE, TYPE C ON 605 LBS./SYD. HMA, BASE, TYPE C ON SUBGRADE TREATMENT, TYPE ID
 - (A2) HMA FOR APPROACHES, TYPE D - CONSISTING OF : 220 LBS./SYD. HMA, SURFACE, TYPE D ON 275 LBS./SYD. HMA, INTERMEDIATE, TYPE D ON 880 LBS./SYD. HMA, BASE, TYPE D ON SUBGRADE TREATMENT, TYPE ID
 - (D1) PCPP FOR APPROACHES, 6 IN., ON DENSE GRADED SUBBASE, 6 IN., ON SUBGRADE TREATMENT TYPE II
 - (D2) PCPP FOR APPROACHES, 9 IN., ON DENSE GRADED SUBBASE, 6 IN., ON GEOGRID TYPE 1B, ON SUBGRADE TREATMENT TYPE II
 - (B3) HMA FOR APPROACHES: 165 LBS./SYD. HMA, SURFACE, TYPE C
 - (F) SIDEWALK, CONCRETE, 4 IN.
 - (FT) SIDEWALK TRANSITION
 - (IS) ISLAND, CONCRETE, CURB, 4 IN.
 - (RAM) CONCRETE SIDEWALK RAMP
 - (PCP) PCPP PATCHING, FULL DEPTH
 - (PH) HMA PATCHING, FULL DEPTH, TYPE C
 - (14) CURB, INTEGRAL CONCRETE
 - (15) CURB, CONCRETE
 - (16) CURB AND GUTTER, CONCRETE
 - (17) CONCRETE CENTER CURB TYPE D
 - (27) MULCHED SEEDING, U



All R/W On This Sheet To Be As Shown.
 All R/W Described From Line "G" Except As Shown.

TBM#21-R/R SPIKE 1' UP EAST SIDE POWER POLE #175-377 20' +/- WEST OF WEST CURB S.R. 3 35' +/- SOUTH OF C/L ISLAND TO ENTRY OF SOUTH HOUND CEMETERY
 N: 180347.7, E: 806343.9 - ELEV: 1019.864



RECOMMENDED FOR APPROVAL		DESIGN ENGINEER		DATE	
DESIGNED: J.P.H.		DRAWN: A.M.			
CHECKED: J.L.B.		CHECKED: J.P.H.			
INDIANA DEPARTMENT OF TRANSPORTATION					
LINE G - S.R. 3					
PLAN AND PROFILE SHEET 15					
HORIZONTAL SCALE			BRIDGE FILE		
1" = 30'			N/A		
VERTICAL SCALE			DESIGNATION		
1" = 10'			1593230		
SURVEY BOOK			SHEETS		
N/A			81 of 227		
CONTRACT			PROJECT		
R-39270			1593230		