

# **Appendix C**

## **Draft Construction Plan Excerpts Preferred Alternatives**

# **Appendix C1**

SR 267 Construction Plan Excerpts

Preferred Alternative

Diverging Diamond Interchange (DDI)

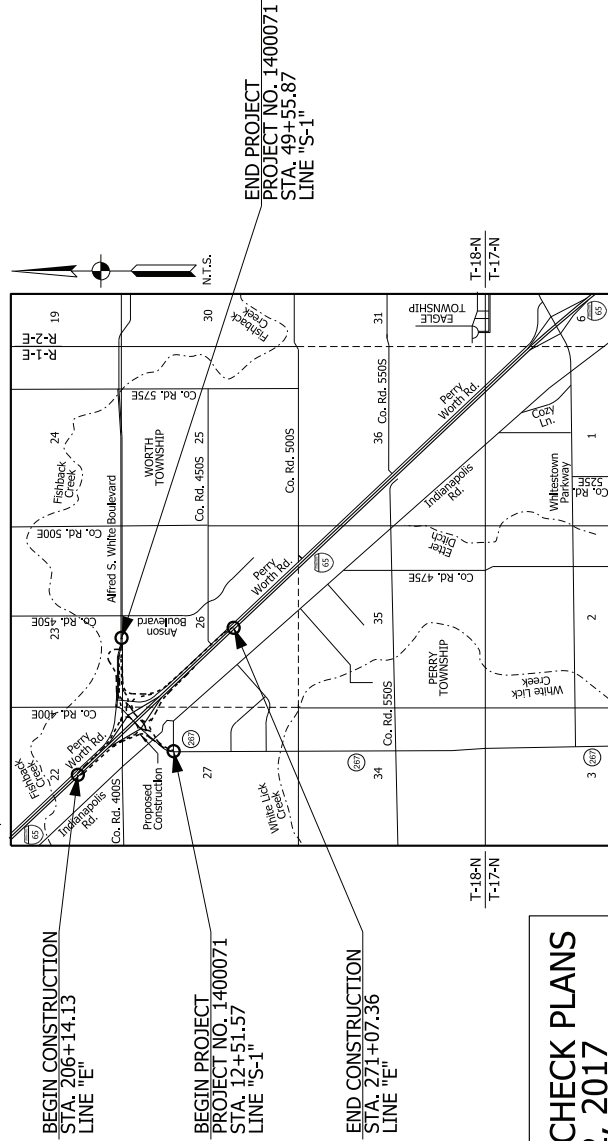
# INDIANA DEPARTMENT OF TRANSPORTATION



## ROAD PLANS I-65/S.R.267

ROUTE: I-65 FROM: RP 132+0.5 TO: RP 133+0.7  
 PROJECT NO. 1400071 P.E.  
 1400071 R/W  
 1400071 CONST.

PROJECT DESCRIPTION  
 INTERCHANGE MODIFICATION AT I-65 AND S.R. 267, LOCATED  
 IN SECTIONS 22 AND 27, T-18-N, R-1-E, PERRY TOWNSHIP,  
 AND SECTIONS 23 AND 26, T-18-N, R-1-E, WORTH TOWNSHIP,  
 BOONE COUNTY, INDIANA.

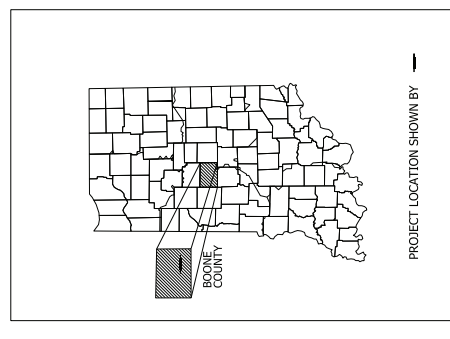


PRELIMINARY FIELD CHECK PLANS  
 NOVEMBER 22, 2017

TRAFFIC DATA		I-65 NB	I-65 SB
ADPT.	(2013)	2,759 V.P.H.	3,156 V.P.H.
ADPT.	(2008)	2,833 V.P.H.	3,196 V.P.H.
ADPT.	(2003)	2,793 V.P.H.	2,766 V.P.H.
DAILY	(2010)	2,766 V.P.H.	2,766 V.P.H.
DIRECTIONAL DISTRIBUTION	(2010)	4.7 %	5.1 %
TRUCKS	(2009)	25.8 % A.A.D.T.	25.3 % A.A.D.T.

DESIGN DATA	
DESIGN SPEED	70 M.P.H.
PROJECT DESIGN CRITERIA	PHASE II CONSTRUCTION (NEW VEHICLE)
FUNCTIONAL CLASSIFICATION	PRINCIPAL ARTERIAL
RURAL/URBAN	URBAN (INTERMEDIATE)
TRUCK	FULL
ACCESS CONTROL	FULL



LATITUDE: 39°58'52" N	LONGITUDE: 86°23'43" W
HYDROLOGIC UNIT CODE: 051202011106 & 051202011302	
GROSS LENGTH:	4.31 MIL.
NET LENGTH:	4.31 MIL.
MAX. GRADE:	4.27 %

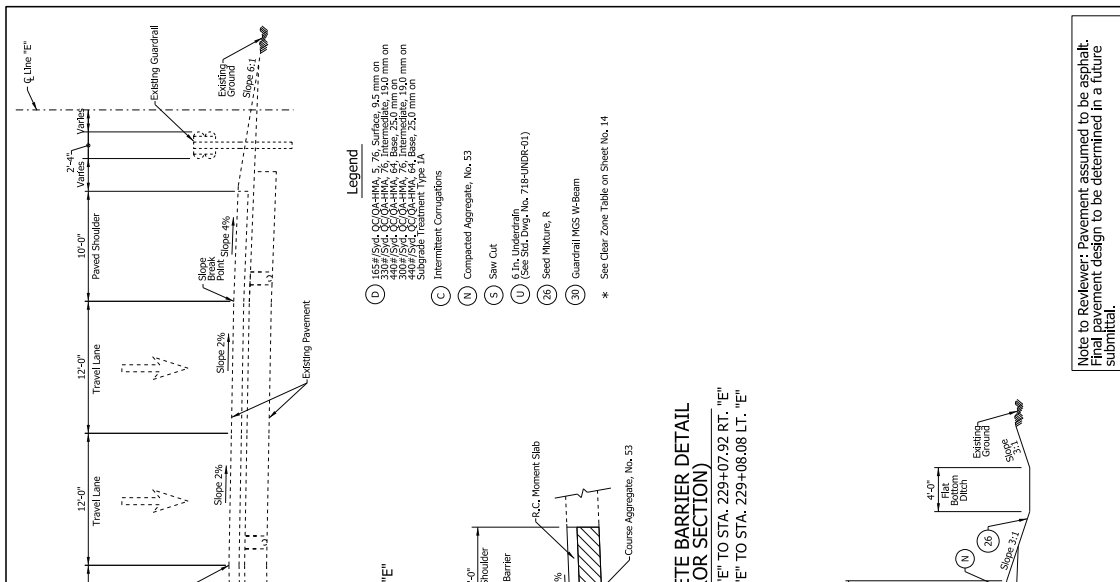
INDIANA DEPARTMENT OF TRANSPORTATION  
 STANDARD SPECIFICATIONS DATED 2018  
 TO BE USED WITH THESE PLANS

PLANS PREPARED BY:	HNTB INDIANA, INC.	(317) 636-6622	PHONE NUMBER
APPROVED BY:			DATE
FOR LETTING:			DATE

DESIGNATION	1400071
SURVEY BOOK	
SHEETS	1 OF 275
CONTRACT	R-39231
PROJECT	1400071

HNTB  
 HNTB CORPORATION  
 ENGINEERS ARCHITECTS PLANNERS  
 111 MONUMENT CIRCLE  
 SUITE 1200  
 INDIANAPOLIS, IN 46204

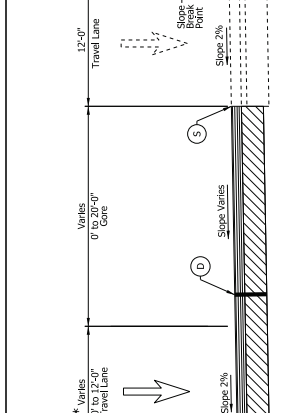




**I-65 TYPICAL SECTION NORTHBOUND LANES**

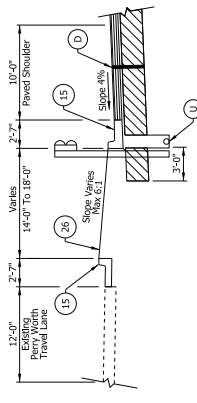
STA. 206+14.13 LT. "E" TO STA. 222+14.48 LT. "E"  
 STA. 237+36.68 LT. "E" TO STA. 271+07.36 LT. "E"  
 \*\* 2-Lane Exit Ramp STA. 240+06.86 "E" TO STA. 248+07.12 "E"

- Legend**
- (D) 185# B-1, CC-04-HMA, 5, 7% Surface, 8.5 mm on 44# B-1, CC-04-HMA, 5, 7% Intermediate, 15.0 mm on 30# B-1, CC-04-HMA, 5, 7% Subgrade, 15.0 mm on 30# B-1, CC-04-HMA, 5, 7% Subgrade Treatment Type 1A
  - (C) Intermittent Curatogates
  - (N) Compacted Aggregate, No. 53
  - (S) Saw Cut
  - (U) 6 In. Underdrain (See Sub Drain, No. 718-UNDR-01)
  - (30) Seed Mixture, R
  - (30) Guardrail M55 W-Beam
- \* See Clear Zone Table on Sheet No. 14



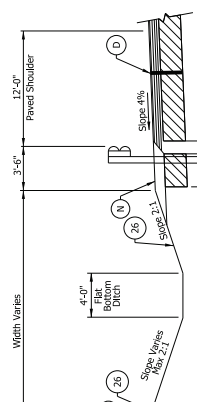
**I-65 TYPICAL SECTION SOUTHBOUND LANES**

STA. 207+43.10 RT. "E" TO STA. 222+86.38 RT. "E"  
 STA. 237+50.23 RT. "E" TO STA. 252+40.72 RT. "E"



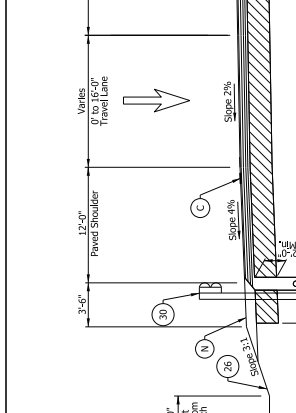
**NB I-65 CONCRETE BARRIER DETAIL (SB MIRROR SECTION)**

SB STA. 228+29.92 RT. "E" TO STA. 229+07.92 RT. "E"  
 NB STA. 228+30.08 LT. "E" TO STA. 229+08.08 LT. "E"



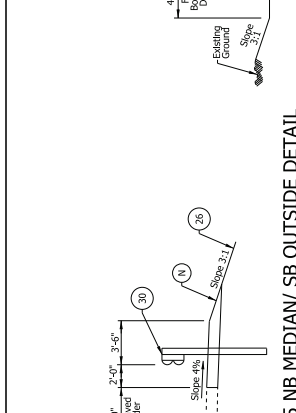
**NB I-65 / PERRY WORTH ROAD GUARDRAIL DETAIL**

STA. 213+90.00 LT. "E" TO STA. 219+40.00 LT. "E"



**I-65 NB MEDJAN / SB OUTSIDE DETAIL**

NB STA. 228+28.31 LT. "E" TO STA. 229+61.27 LT. "E"  
 SB STA. 224+60.17 RT. "E" TO STA. 228+29.92 RT. "E"  
 SB STA. 229+07.92 RT. "E" TO STA. 229+72.78 RT. "E"

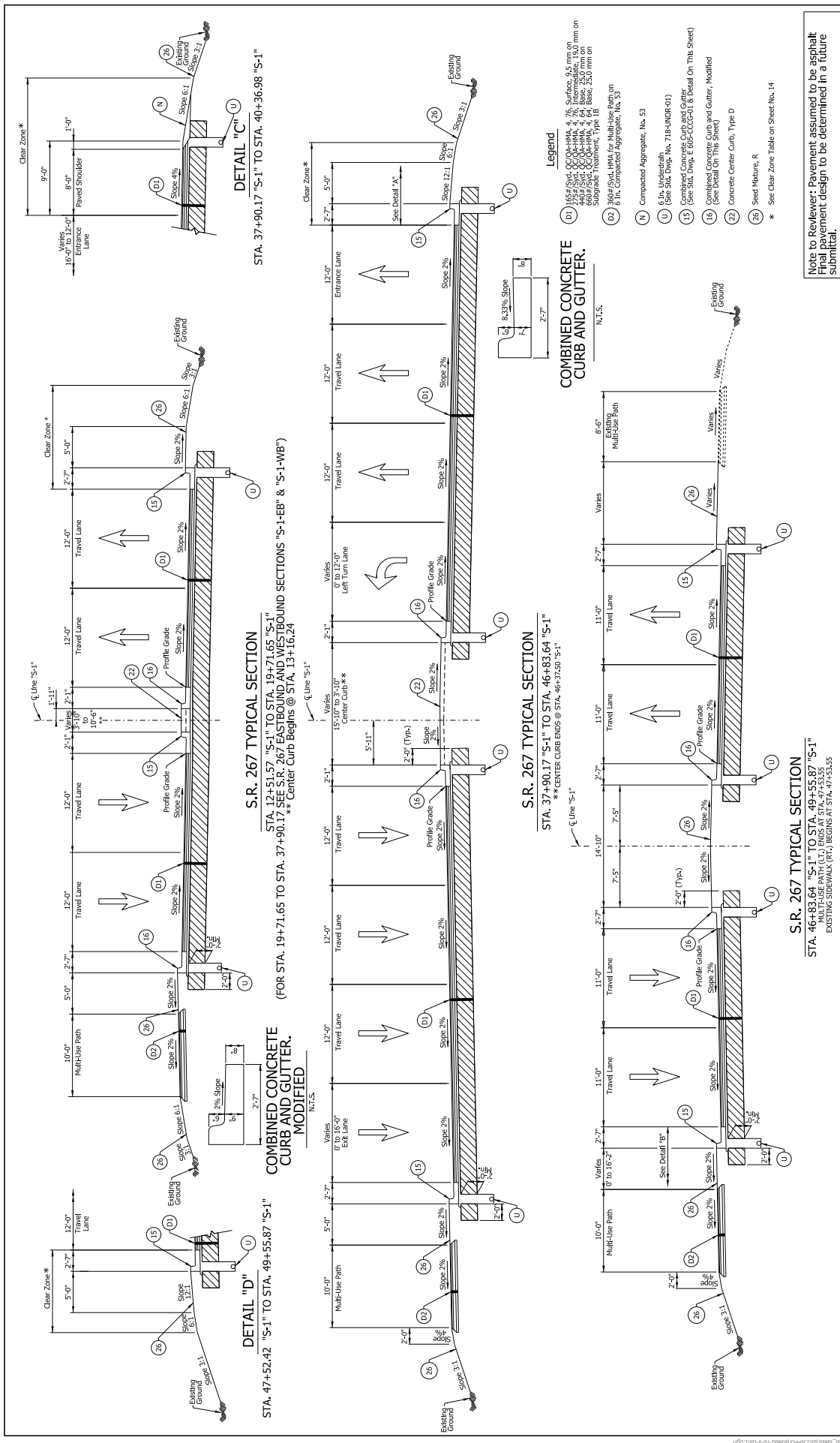


**I-65 NB OUTSIDE DETAIL (MIRROR SECTION)**

NB STA. 229+08.08 LT. "E" TO STA. 229+71.33 LT. "E"

INDIANA DEPARTMENT OF TRANSPORTATION		BRIDGE FILE	
RECOMMENDED FOR APPROVAL	DESIGN ENGINEERS	DATE	
DESIGNER: JBD	DRAWN: DPH	CHECKED: JBD	
CHECKED: JLC			
TYPICAL CROSS SECTIONS I-65		HORIZONTAL SCALE VERTICAL SCALE SURVEY BOOK SHEETS CONTRACT PROJECT	
		140071 N/A N/A TS-41 R-29231 4 3 275 R-29231 40071	

**DRAFT**  
 NOT FOR CONSTRUCTION



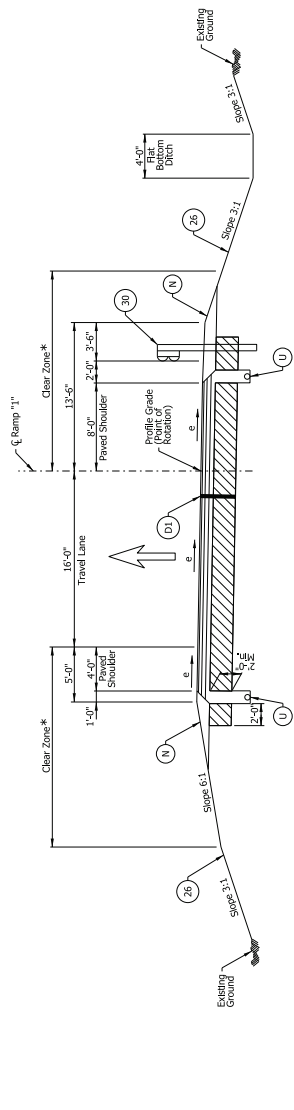
Note to Reviewer: Pavement assumed to be asphalt  
Final pavement design to be determined in a future  
submittal.

INDIANA DEPARTMENT OF TRANSPORTATION		BRIDGE FILE	
RECOMMENDED FOR APPROVAL	DESIGNER ENGINEERS	DATE	DESIGNATION
DESIGNER: JBD	DRAWN: DPH	CHECKED: JBD	140071
CHECKED: JLC	DATE: 3/30		
DRAFT NOT FOR CONSTRUCTION		SHEETS: TS-42	
		PROJECT: 4	
		CONTRACT: 275	
		PROJECT NO.: R-29231	
		SHEET NO.: 40071	



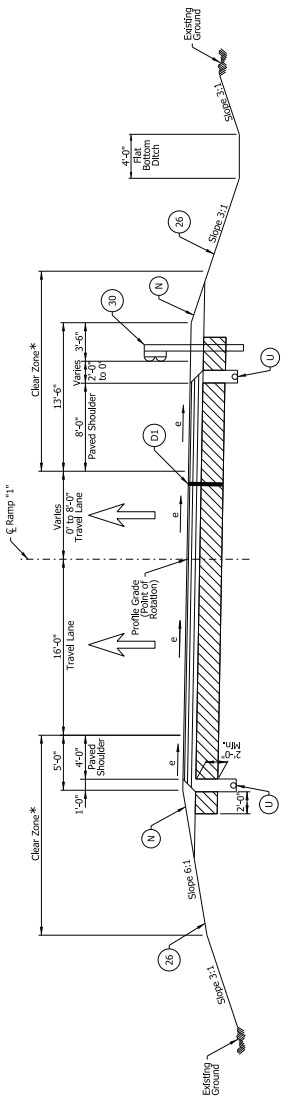






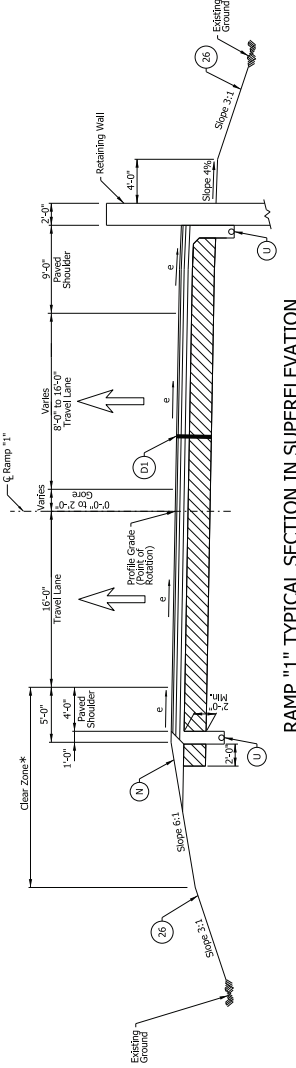
RAMP "1" TYPICAL SECTION IN SUPERELEVATION

RAMP "1" STA. 107+91.86 TO STA. 109+55.45



RAMP "1" TYPICAL SECTION IN SUPERELEVATION

RAMP "1" STA. 109+55.45 TO STA. 111+00.00



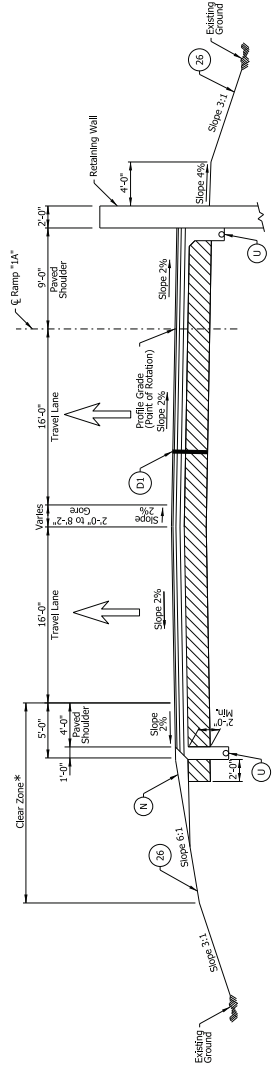
RAMP "1" TYPICAL SECTION IN SUPERELEVATION

RAMP "1" STA. 111+00.00 TO STA. 112+48.77

Note to Reviewer: Pavement assumed to be asphalt  
Final pavement design to be determined in a future  
Retaining Wall type to be determined in a future  
submittal.

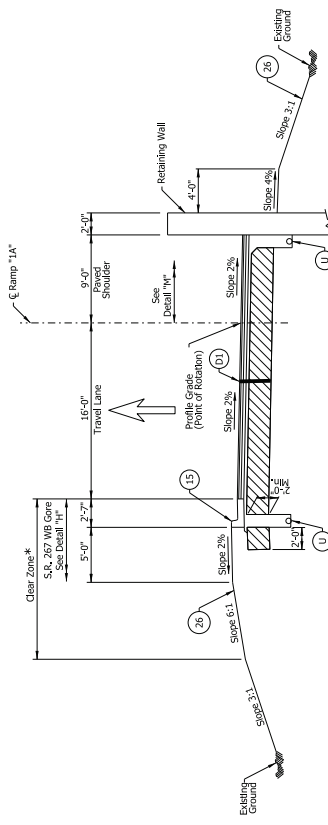
- Legend**
- (D) 165# S/M, CC-QA-HMA, 4, 76, Surface, 9.5 mm on 44# S/M, CC-QA-HMA, 4, 64, Base, 25.0 mm on 44# S/M, CC-QA-HMA, 4, 64, Base, 25.0 mm on 60# S/M, CC-QA-HMA, 4, 64, Base, 25.0 mm on Subgrade Treatment, Type 1B
  - (N) Compacted Aggregate, No. 53
  - (U) 6.1% Ultrafast (See Std. Draw. No. 718-INOR-01)
  - (26) Seed Mixture, R
  - (30) Guardrail MGS W-Beam
- \* See Clear Zone Table on Sheet No. 14  
e See Super-elevation Diagrams on Sheet Nos. 99 - 64

<p><b>DRAFT</b></p> <p>NOT FOR CONSTRUCTION</p>	<p>RECOMMENDED FOR APPROVAL</p> <p>DESIGNER: JBD    DRAWN: DPH    CHECKED: JBO</p>	<p>INDIANA</p> <p>DEPARTMENT OF TRANSPORTATION</p>	<p>HORIZONTAL SCALE</p> <p>VERTICAL SCALE</p> <p>SURVEY BOOK</p> <p>CONTRACT</p>	<p>BRIDGE FILE</p> <p>DESIGNATION</p> <p>SHEETS</p> <p>PROJECT</p>
	<p>DATE</p> <p>CHECKED: JBC</p>	<p>TYPICAL CROSS SECTIONS</p> <p>RAMP "1"</p>	<p>N/A</p> <p>N/A</p> <p>R-29231</p>	<p>140071</p> <p>7</p> <p>4</p> <p>275</p> <p>R02071</p>



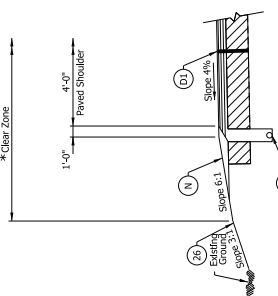
**RAMP "1A" TYPICAL SECTION**

RAMP "1A" STA. 152+92.69 TO STA. 153+84.37



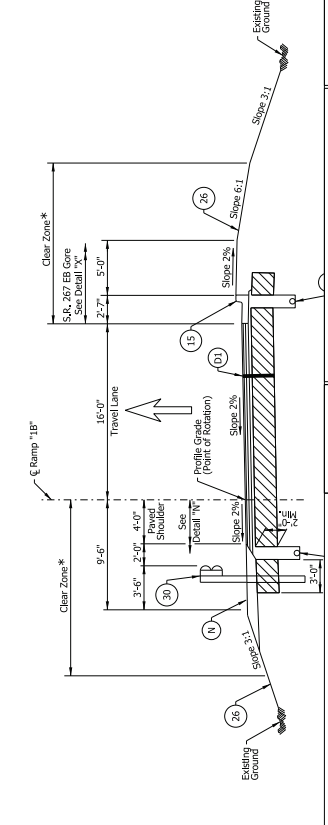
**RAMP "1A" TYPICAL SECTION**

STA. 157+42.75 "1A"



**DETAIL "M"**

STA. 170+88.54 "1B" TO STA. 171+72.87 "1B"



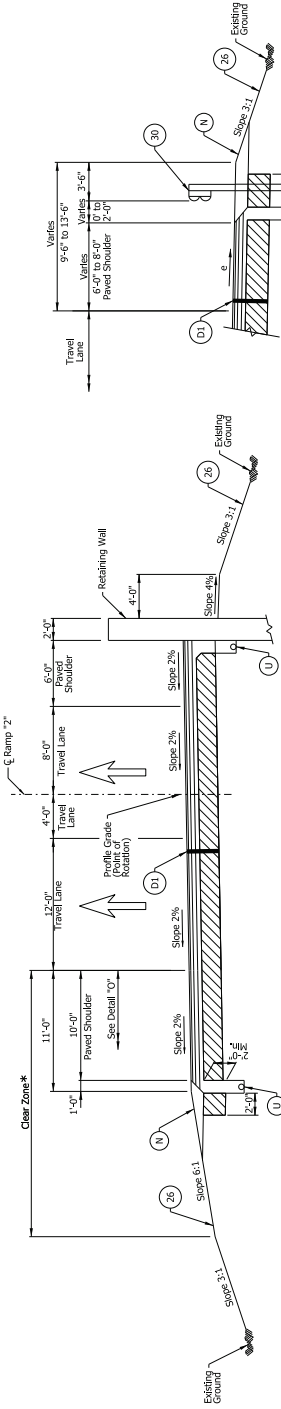
**RAMP "1B" TYPICAL SECTION**

STA. 156+70.00 RT. "1A" TO STA. 157+36.20 RT. "1A"

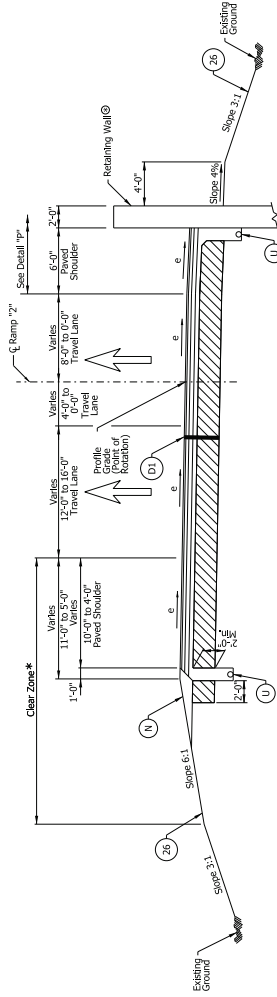
- Legend**
- (D1) 65#/SMA, CCG-1HMA, 4, 76 Surface, 9.5 mm on 44#/SMA, CCG-1HMA, 4, 69 Base, 9.5 mm on 44#/SMA, CCG-1HMA, 4, 69 Base, 25.0 mm on 60#/SMA, CCG-1HMA, 4, 64 Base, 25.0 mm on Subgrade Treatment, Type 1B
  - (N) Compacted Aggregate, No. 53
  - (U) 6.1a, Ultraflex (See Std. Dwg. No. 718-INOR-01)
  - (15) Combined Concrete Curb and Gutter (See Std. Dwg. E 695-CCCG-01)
  - (26) Seed Mixture, R
  - (30) Guardrail MGS W-Beam
- \* See Clear Zone Table on Sheet No. 14

Note to Reviewer: Pavement assumed to be asphalt  
Final pavement design to be determined in a future  
Retaining Wall type to be determined in a future  
submittal.

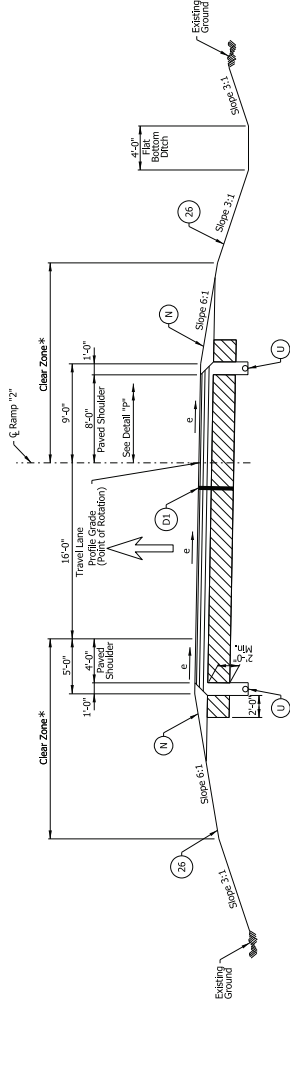
RECOMMENDED FOR APPROVAL	DESIGNER:	300	DATE:	
	CHECKED:	300	DESIGN ENGINEERS:	
DRAFT	DESIGNER:	300	DRAWN:	CPH
	CHECKED:	300	CHECKED:	300
INDIANA DEPARTMENT OF TRANSPORTATION		BRIDGE FILE		
TYPICAL CROSS SECTIONS RAMP "1A" & "1B"		DESIGNATION		
		140071		
		SHEETS		
		8		
		PROJECT		
		R-29231		
		SHEETS		
		8		
		PROJECT		
		R-29231		



**RAMP "2" TYPICAL SECTION IN NORMAL CROWN**  
 RAMP "2" STA. 203+13.53 TO STA. 204+55.00



**RAMP "2" TYPICAL SECTION IN SUPERELEVATION**  
 RAMP "2" STA. 204+55.00 TO STA. 207+80.69  
 @RETAINING WALL ENDS AT STA. 205+70.07



**RAMP "2" TYPICAL SECTION IN SUPERELEVATION**  
 RAMP "2" STA. 207+80.69 TO STA. 209+05.17

**DETAIL "p"**  
 RAMP "2" STA. 205+70.07 RT. TO STA. 209+05.17 RT.

**Legend**

- (D) 65#/SYD CCQ-HMA, 4, 76 Surface, 9.5 mm on 44#/SYD CCQ-HMA, 4, 69 Base, 9.5 mm on 60#/SYD CCQ-HMA, 4, 64 Base, 25.0 mm on Subgrade Treatment, Type 1B
  - (N) Compacted Aggregate, No. 53
  - (U) 1/2" Ultrafines (See Std. Drop No. 718-INOR-01)
  - (30) Seed Mixture, R
  - (30) Guardrail MGS W-beam
- \* See Clear Zone Table on Sheet No. 14  
 e See SuperElevation Diagrams on Sheet No.s 59 - 64

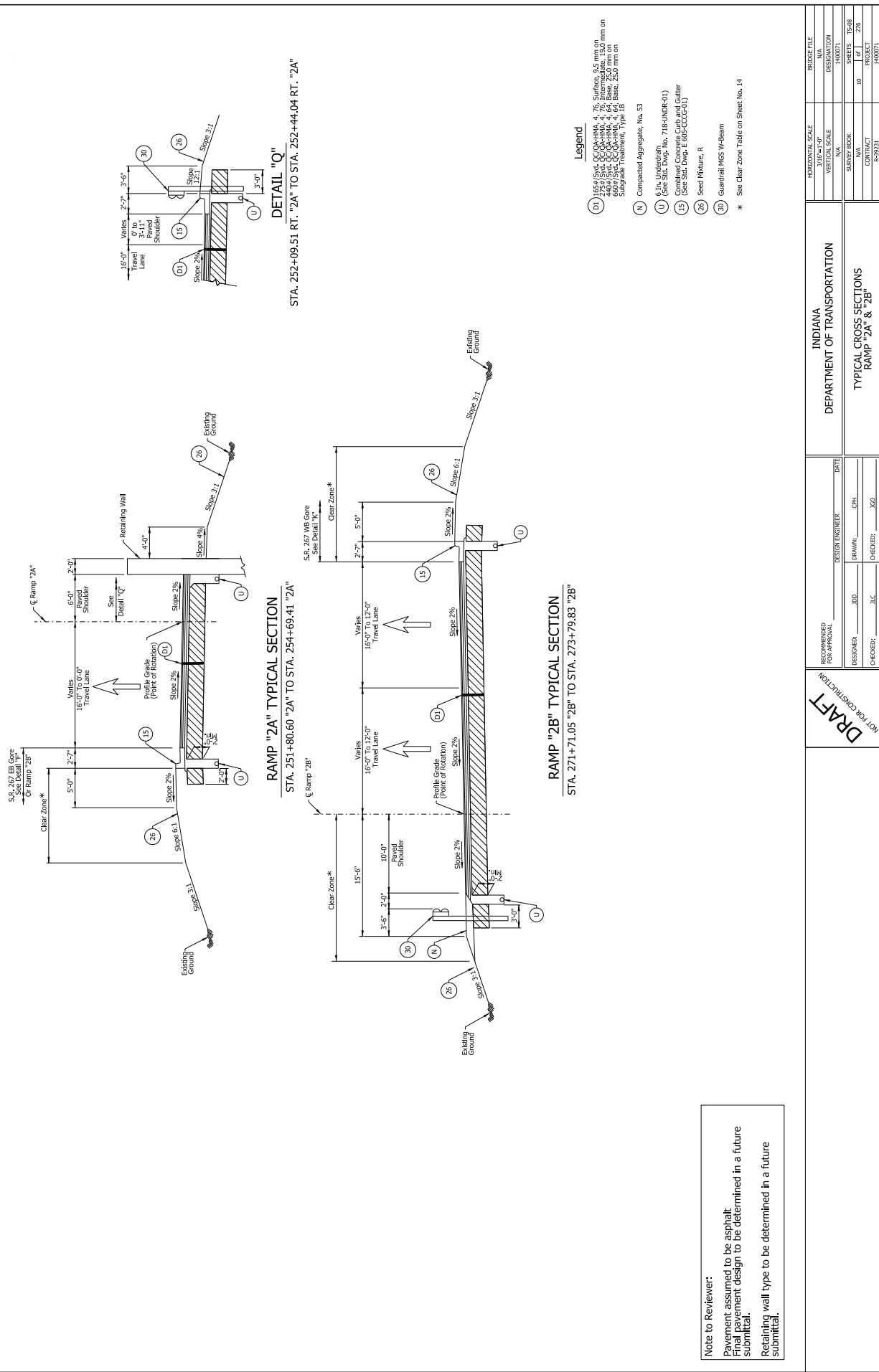
**Note to Reviewer:**  
 Pavement assumed to be asphalt.  
 Final pavement design to be determined in a future submittal.  
 Retaining wall type to be determined in a future submittal.

**DRAFT**

RECOMMENDED FOR APPROVAL	DESIGN ENGINEERS	DATE
DESIGNER: JBD	DRAWN: DPH	CHECKED: JBD
CHECKED: JLC		

<b>INDIANA</b>	
<b>DEPARTMENT OF TRANSPORTATION</b>	
<b>TYPICAL CROSS SECTIONS</b>	
<b>RAMP "2"</b>	

HORIZONTAL SCALE	BRIDGE FILE
VERTICAL SCALE	DESIGNATION
SURVEY BOOK	NO.
SHEETS	TS-07
PROJECT	NO.
CONTRACT	NO.
DATE	NO.



**DETAIL "Q"**  
STA. 252+09.51 RT. "2A" TO STA. 252+44.04 RT. "2A"

**RAMP "2A" TYPICAL SECTION**  
STA. 251+80.60 "2A" TO STA. 254+69.41 "2A"

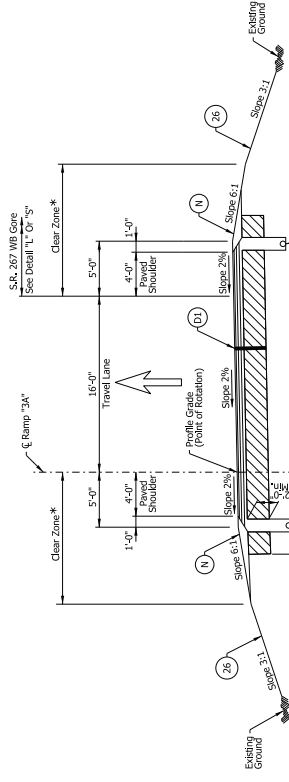
**RAMP "2B" TYPICAL SECTION**  
STA. 271+71.05 "2B" TO STA. 273+79.83 "2B"

- Legend**
- (D) 165# SW/CC/CC-HMA, 4, 76 Surface, 9.5 mm on 440# SW/CC/CC-HMA, 4, 69 Base, 9.5 mm on 600# SW/CC/CC-HMA, 4, 64 Base, 25.0 mm on aggregate treatment, Type 1B
  - (N) Compacted Aggregate, No. 53
  - (U) 6.1% Underdrain (See Std. Dwg. No. 718-INOR-01)
  - (15) Combined Concrete Curb and Gutter (See Std. Dwg. E 69B-CCCC-01)
  - (26) Seed Mixture, R
  - (30) Guardrail MGS W-Beam
- \* See Clear Zone Table on Sheet No. 14

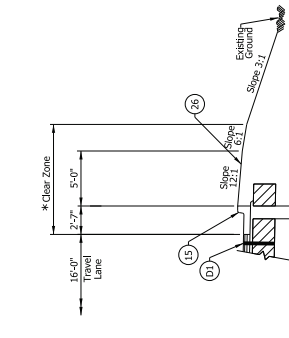
**Note to Reviewer:**  
Pavement assumed to be asphalt.  
Retaining wall design to be determined in a future submittal.  
Retaining wall type to be determined in a future submittal.

NOT FOR CONSTRUCTION	INDIANA DEPARTMENT OF TRANSPORTATION		BRIDGE FILE
	RECOMMENDED FOR APPROVAL	DESIGN ENGINEERS	DATE
DRAFT		DESIGNER: JBD	DRAWN: DPH
		CHECKED: JLC	CHECKED: JBD
TYPICAL CROSS SECTIONS RAMP "2A" & "2B"		SURVEY BOOK	N/A
		SURVEY SCALE	N/A
		HORIZONTAL SCALE	N/A
		VERTICAL SCALE	INDICATION
		INDICATION	1400071
		SHEETS	TS-58
		PROJECT	275
		CONTRACT	R-29231
		PROJECT	440071





**RAMP "3A" TYPICAL SECTION**  
 STA. 358+97.54 "3A" TO STA. 361+09.06 "3A"



**DETAIL "S"**

Ramp "3A" STA. 360+80.73 RT. TO STA. 361+01.92 RT.

**Legend**

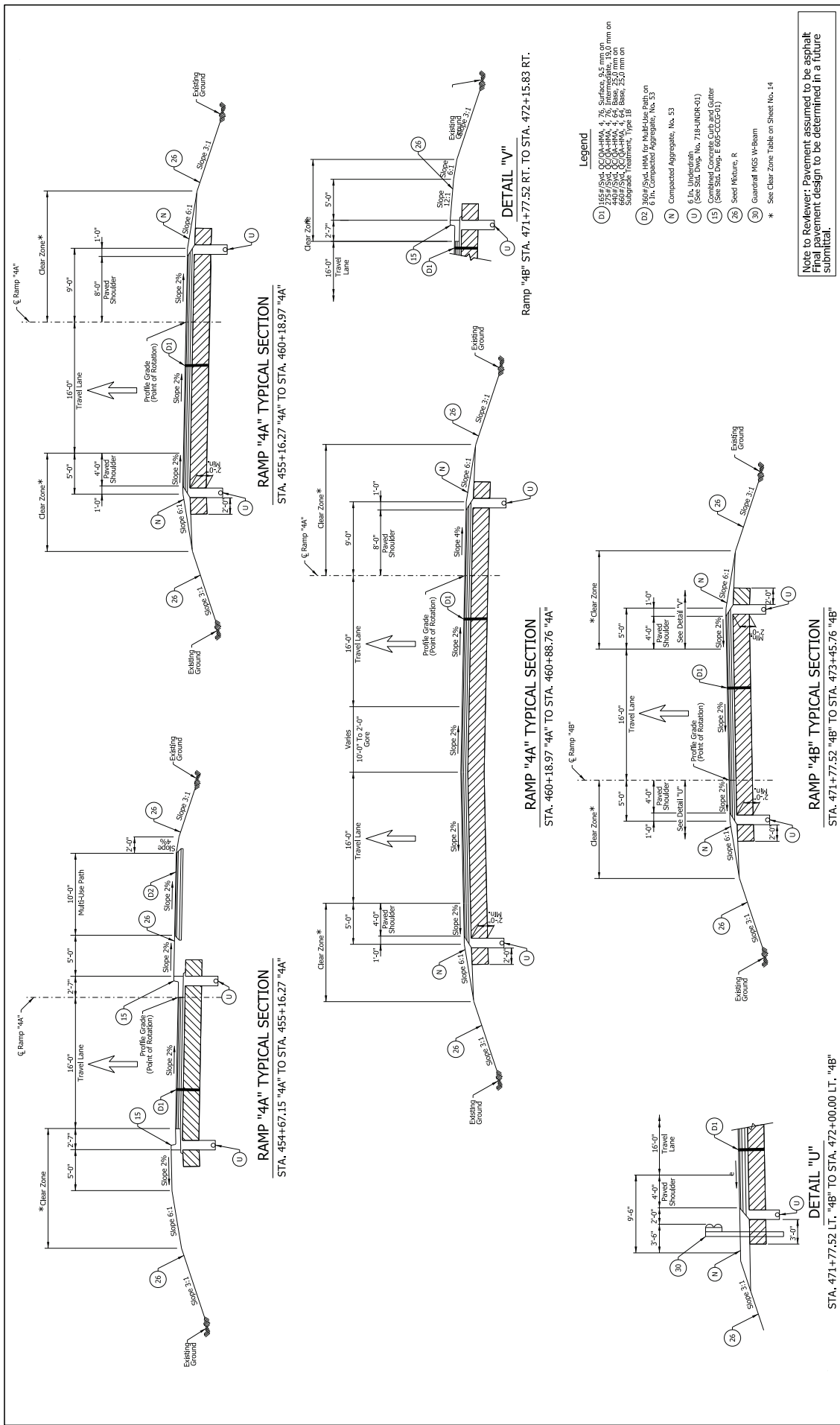
- (D1) 16S# (SMA, CCG-HMA, 4, 76 Surface, 9.5 mm on top, 4.75 mm on bottom) or 16S# (SMA, CCG-HMA, 4, 69 Surface, 9.5 mm on top, 4.75 mm on bottom) or 16S# (SMA, CCG-HMA, 4, 64 Surface, 9.5 mm on top, 4.75 mm on bottom) or 16S# (SMA, CCG-HMA, 4, 64 Base, 25.0 mm on top, 4.75 mm on bottom) Aggregate Treatment, Type 1B
- (N) Compacted Aggregate, No. 53
- (U) 6 in. Unfinished (See Std. Draw. No. 718-UNDR-01)
- (L) Combined Concrete Curb and Gutter (See Std. Draw. E 695-CCCG-1)
- (R) Seed Mixture, R

\* See Clear Zone Table on Sheet No. 14

Note to Reviewer: Pavement assumed to be asphalt  
 Final pavement design to be determined in a future  
 submittal.

<b>DRAFT</b> NOT FOR CONSTRUCTION	RECOMMENDED FOR APPROVAL	DESIGN ENGINEERS	DATE
	DESIGNER: JDO	DRAWN: DPH	CHECKED: JDO
	CHECKED: JLC		
INDIANA DEPARTMENT OF TRANSPORTATION	BRIDGE FILE		
	HORIZONTAL SCALE	VERTICAL SCALE	DESIGNATION
	N/A	N/A	140071
TYPICAL CROSS SECTIONS RAMP "3A"	SURVEY BOOK	SHEETS	TS-10
	N/A	12	4
	CONTRACT	PROJECT	275
	R-29231	R-29231	140071





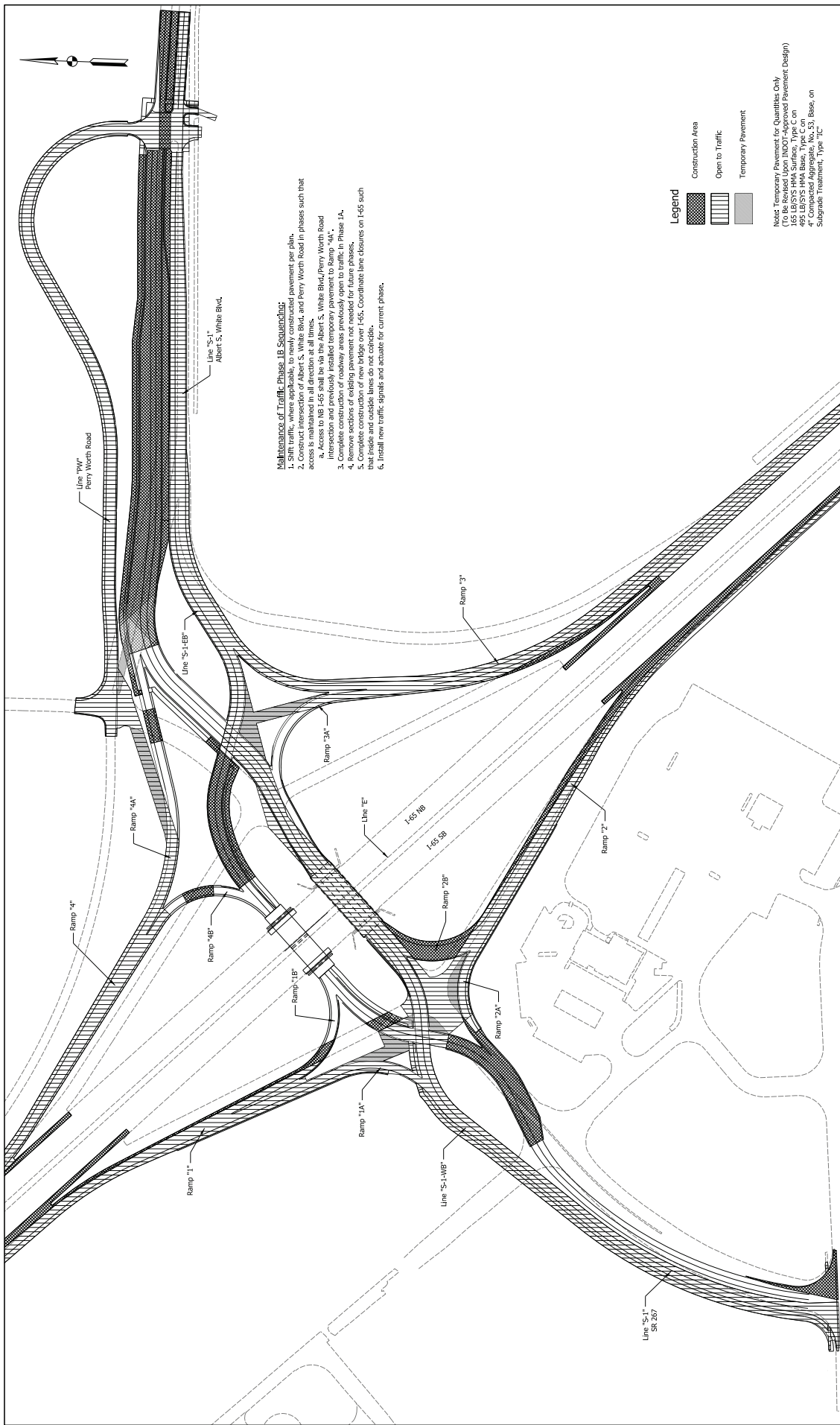
INDIANA DEPARTMENT OF TRANSPORTATION		RECOMMENDED FOR APPROVAL		DESIGN ENGINEERS		DATE	
HORIZONTAL SCALE 1"=40'-0"		VERTICAL SCALE 1"=4'-0"		DRAWN		DATE	
SURVEY BOOK N/A		SHEET NO. 14		CHECKED		DATE	
PROJECT R-29231		SHEETS TS-12		DESIGNER JBD		CHECKED JBD	
CONTRACT R-29231		PROJECT R-29231		DRAWN CPH		CHECKED JBD	
SHEET NO. 14		SHEETS TS-12		DESIGNER JBD		CHECKED JBD	
PROJECT R-29231		SHEETS TS-12		DRAWN CPH		CHECKED JBD	
CONTRACT R-29231		SHEETS TS-12		DESIGNER JBD		CHECKED JBD	

NOT FOR CONSTRUCTION  
DRAFT









**Maintenance of Traffic Phase 1B Sequencing:**

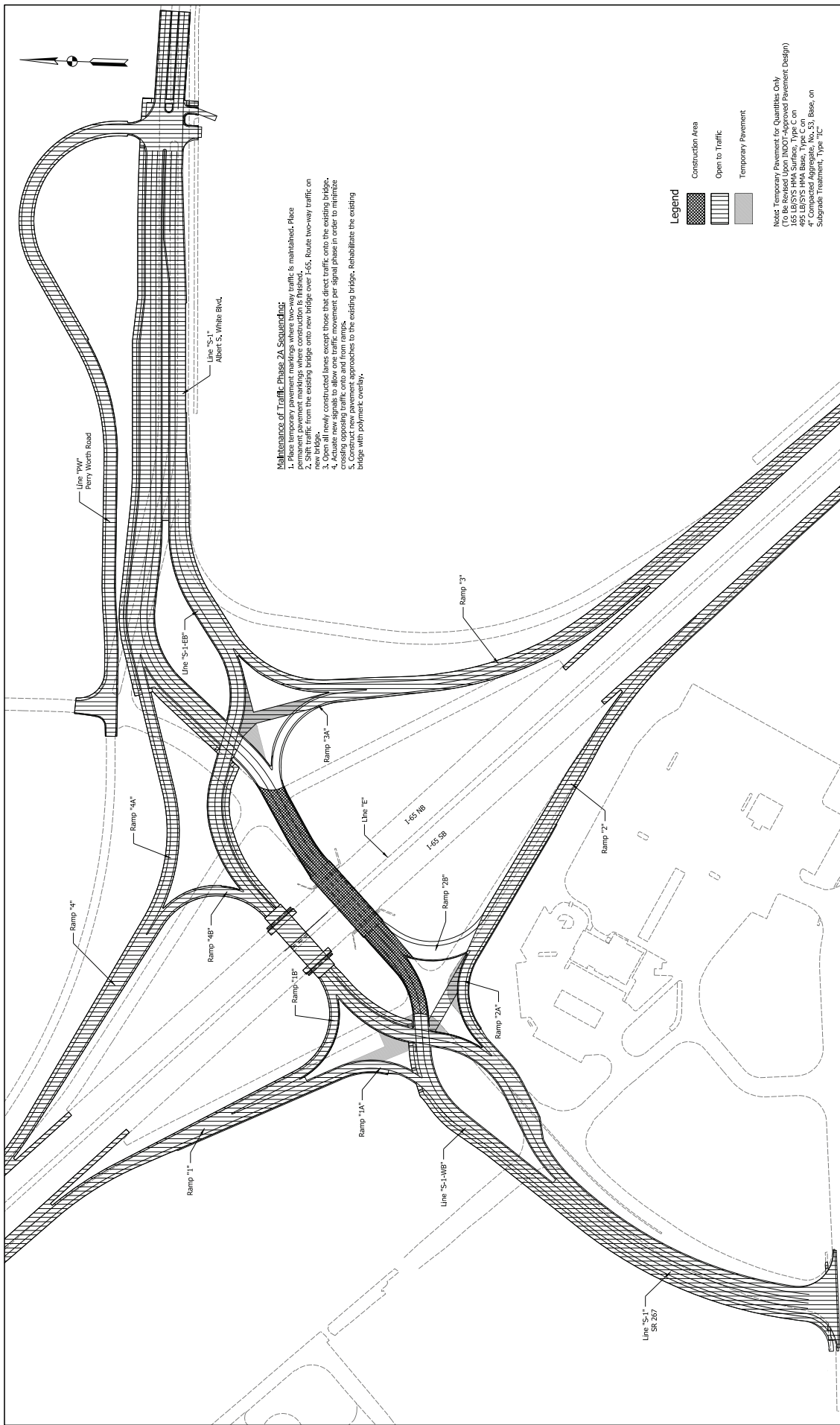
1. Shift traffic, where applicable, to newly constructed pavement per plan.
2. Construct intersection of Albert S, White Blvd, and Perry Worth Road in phases such that access is maintained in all direction at all times.
3. Complete construction of roadway areas previously open to traffic in Phase 1A, including the installation of new traffic signals and traffic signs.
4. Remove sections of existing pavement not needed for future phases.
5. Complete construction of new bridge over I-45. Coordinate lane closures on I-45 such that inside and outside lanes do not collide.
6. Install new traffic signals and actuator for current phase.

**Legend**

- Construction Area
- Open to Traffic
- Temporary Pavement

Note: Temporary Pavement for Quantities Only  
 (1) 1.5" Thick Temporary Pavement Design)  
 165 LB/ST'S HMA Surface, Type C on  
 495 LB/ST'S HMA Base, Type C on  
 4" Compacted Aggregate, No. 53, Base, on  
 Subgrade Treatment, Type 1C

RECOMMENDED FOR APPROVAL NOT FOR CONSTRUCTION <b>DRAFT</b>	DESIGNER: JPP CHECKED: DTO		DESIGN ENGINEERS: JPP CHECKED: DTO		DATE: _____	
	<b>INDIANA          DEPARTMENT OF TRANSPORTATION</b>				BRIDGE FILE DESIGNATION 1400071	
<b>MAINTENANCE OF TRAFFIC          PHASE 1B</b>				HORIZONTAL SCALE VERTICAL SCALE N/A SURVEY BOOK N/A		SHEETS: MD-C2 OF: 25 PROJECT R-29231



**Maintenance of Traffic Phase 2A Sequencing:**

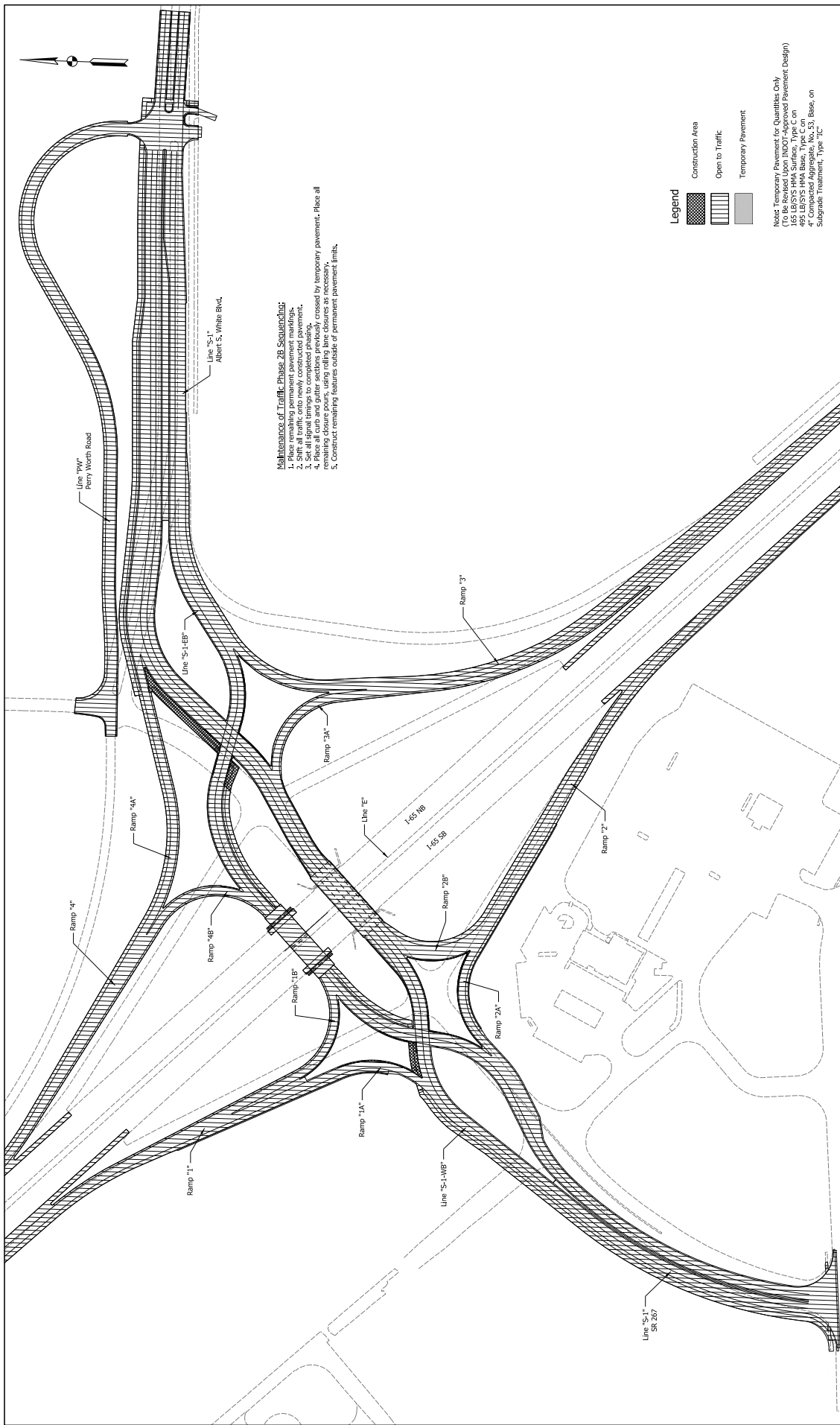
1. Place temporary pavement markings where two-way traffic is maintained. Place permanent pavement markings where construction is finished.
2. Route two-way traffic from the existing bridge onto new bridge over I-65. Route two-way traffic on new bridge.
3. Open all newly constructed lanes except those that direct traffic onto the existing bridge.
4. Activate new signals to allow one traffic movement per signal phase in order to minimize delay.
5. Construct new pavement approaches to the existing bridge. Rehabilitate the existing bridge with polymer overlay.

**Legend**

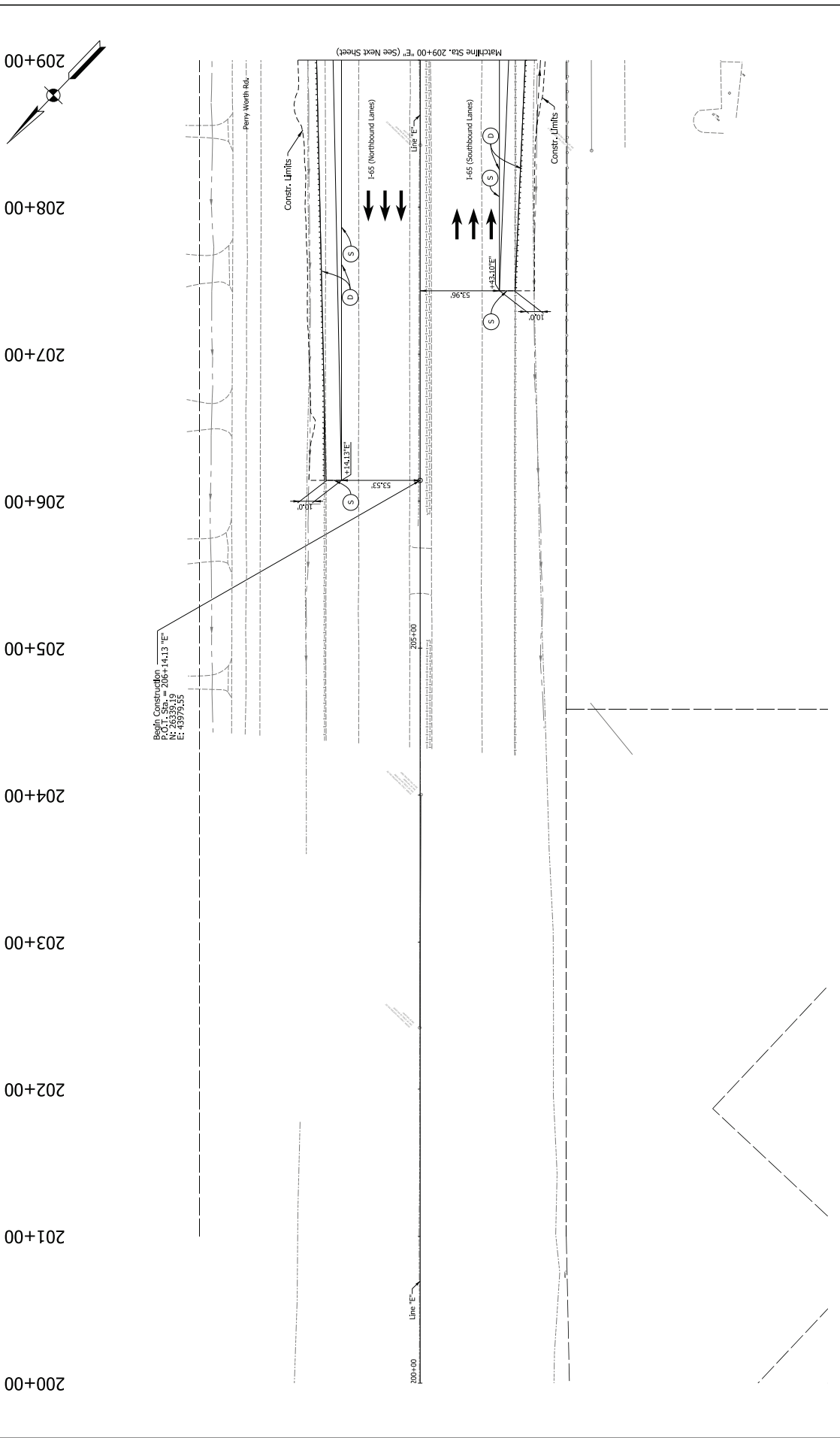
- Construction Area
- Open to Traffic
- Temporary Pavement

**Note:** Temporary Pavement for Quantities Only  
 (1) Temporary Pavement for Quantities Only  
 165 LB/ST'S HMA Surface, Type C on  
 495 LB/ST'S HMA Base, Type C on  
 4" Compacted Aggregate, No. 53, Base, on  
 Subgrade Treatment, Type 1C

RECOMMENDED FOR APPROVAL DESIGNER: JPP CHECKED: DTO	DESIGNED BY: JPP CHECKED: DTO	DATE: _____	
		DESIGN ENGINEERS: _____	
<b>DRAFT</b> NOT FOR CONSTRUCTION		INDIANA DEPARTMENT OF TRANSPORTATION	
		MAINTENANCE OF TRAFFIC PHASE 2A	
BRIDGE FILE DESIGNATION 1400071		HORIZONTAL SCALE VERTICAL SCALE N/A	
SHEETS: MD-C3 PROJECT 23 OF 276		SURVEY BOOK N/A	
CONTRACT RS-9231		DRAWING NO. 23	
PROJECT R-9231		SHEETS: MD-C3 PROJECT 23 OF 276	
PROJECT R-9231		SHEETS: MD-C3 PROJECT 23 OF 276	

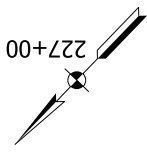
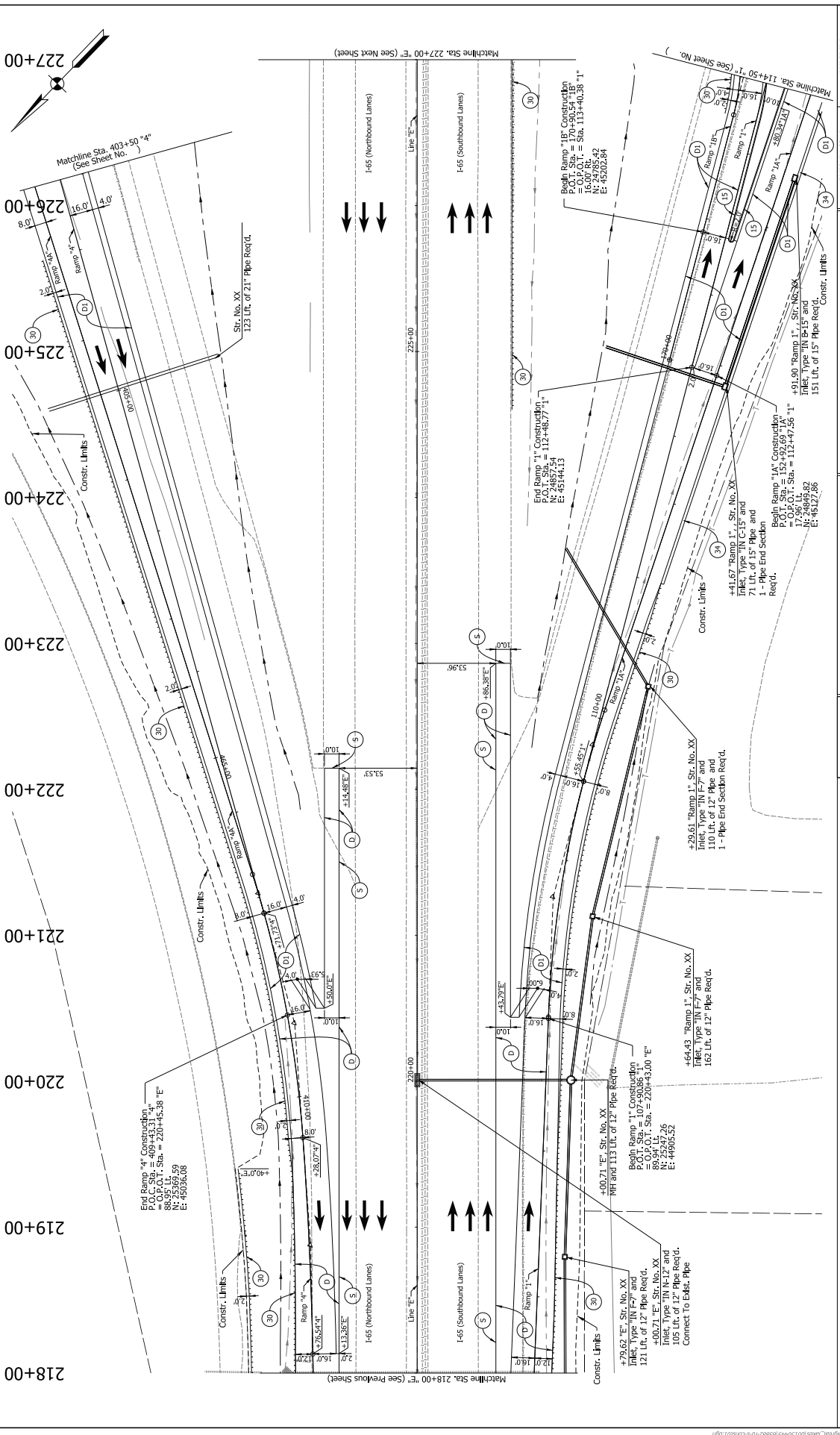


<b>INDIANA</b> <b>DEPARTMENT OF TRANSPORTATION</b>	HORIZONTAL SCALE VERTICAL SCALE DESIGNATION 1/4" = 1'-0" 1/8" = 1'-0" 1400071	BRIDGE FILE DESIGNATION 1400071
	SURVEY BOOK SHEETS NOT-CH 24 24 275	CONTRACT R-29231
<b>DRAFT</b> NOT FOR CONSTRUCTION		RECOMMENDED FOR APPROVAL DATE DESIGNED BY: JPP DRAWN BY: JPP CHECKED BY: DTO DATE CHECKED BY: DTO



Notes: See Sheet No. XX For The Construction Detail Legend	INDIANA DEPARTMENT OF TRANSPORTATION		BRIDGE FILE		
	CONSTRUCTION DETAILS 1-45 LINE 1E		HORIZONTAL SCALE VERTICAL SCALE RESOLUTION 1400071		
RECOMMENDED FOR APPROVAL		DESIGNER ENGINEERS		DATE	
DESIGNER:	300	DRAWN:	DPH	CHECKED:	300
CHECKED:	31C	CHECKED:	300		
NOT FOR CONSTRUCTION			PROJECT		
			CONTRACT		
			R-39231		
			PRODUCT		
			406071		

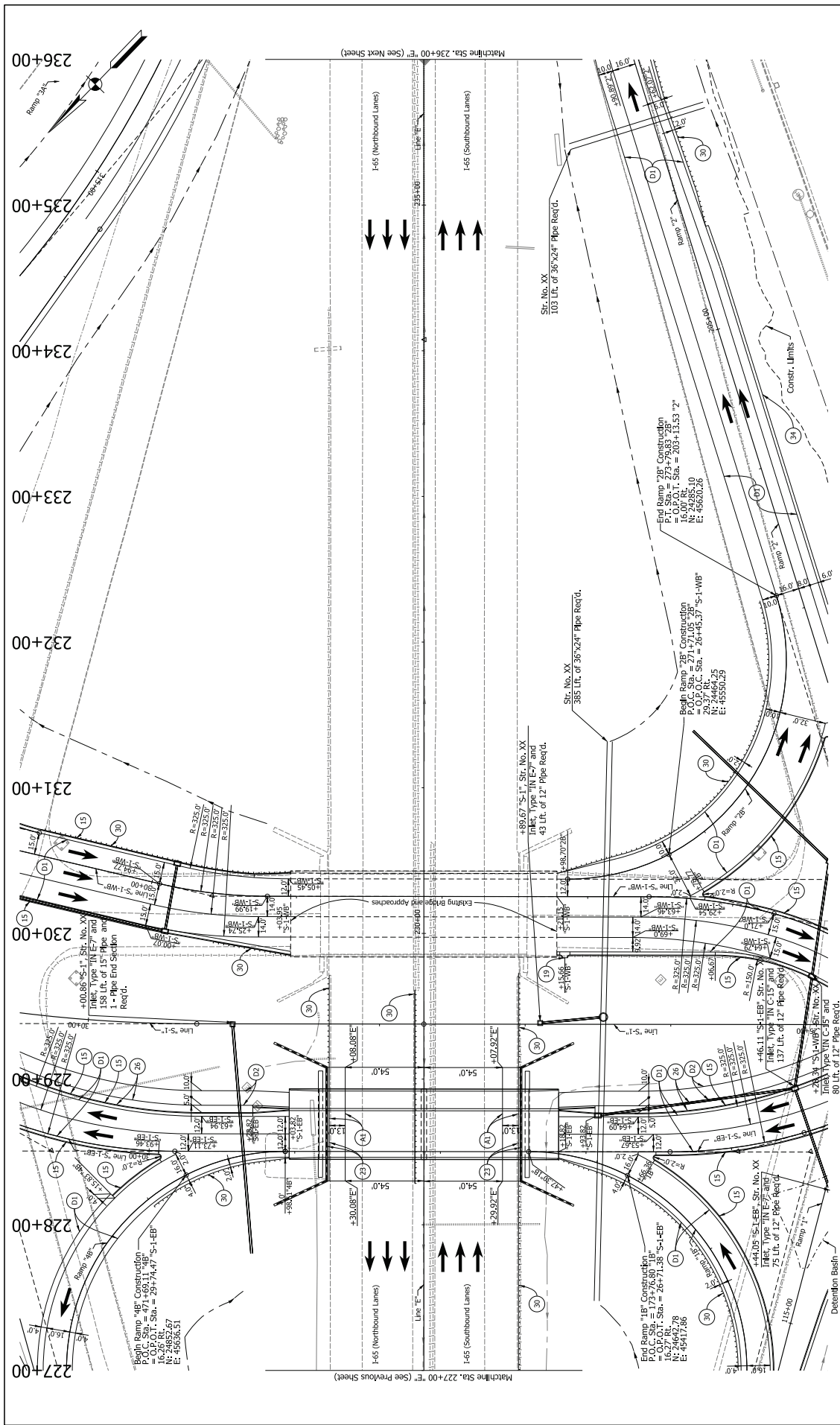




BRIDGE FILE PROJECT NO. 1400071 SHEETS C-041 CONTRACT R-29231 PLAN NO. 1400071	HORIZONTAL SCALE 1" = 40'	VERTICAL SCALE 1" = 4'	SURVEY BOOK N/A	SURVEY NO. N/A	DATE 11/22/2017
	DEPARTMENT OF TRANSPORTATION CONSTRUCTION DETAILS LINE 'E'			DESIGNER JBD	DRAWN JPH
NOT FOR CONSTRUCTION DRAFT					

Appendix C1-23





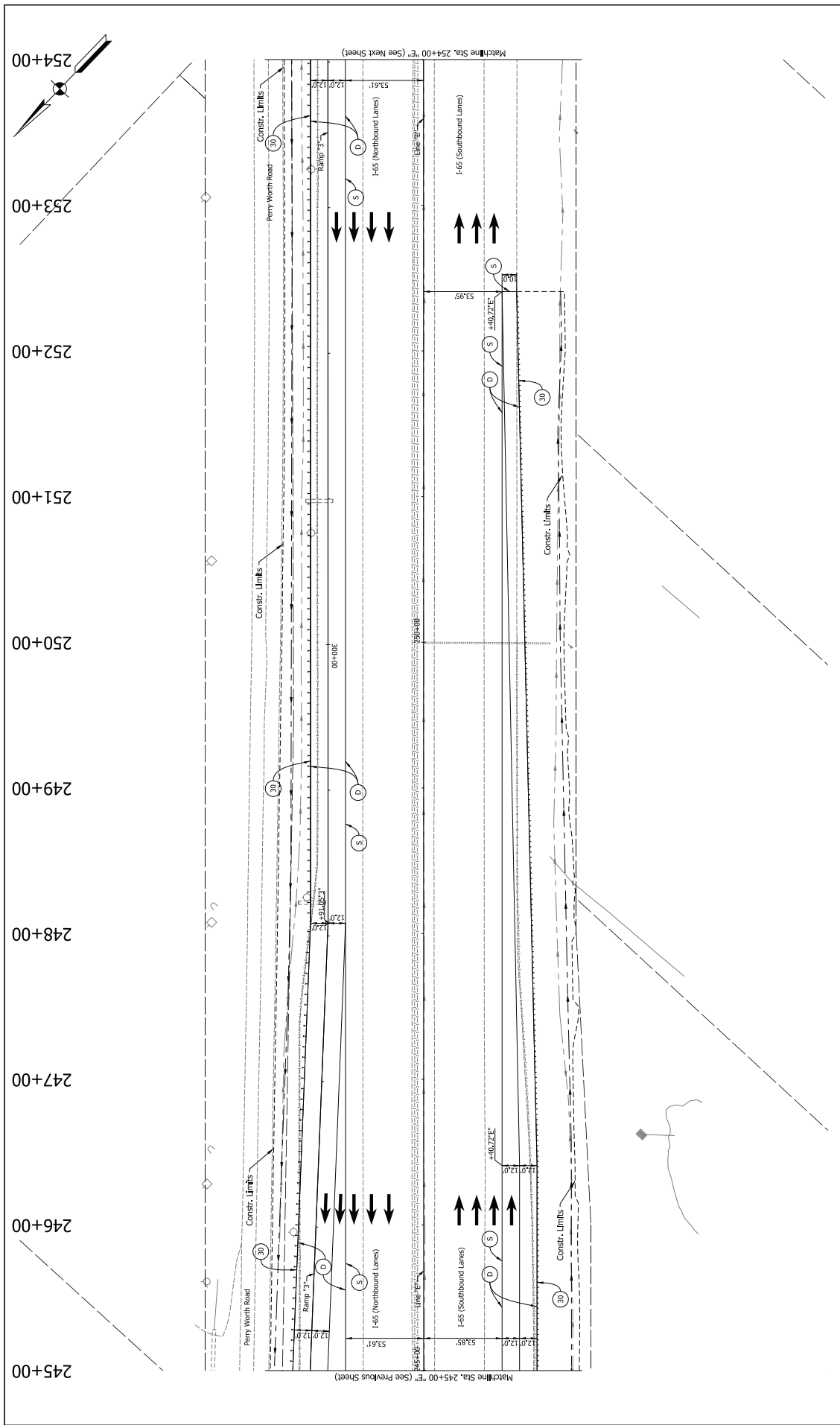
Notes:  
See Sheet No. XX For The Construction Detail Legend

RECOMMENDED FOR APPROVAL	DESIGNER: JBD	DRAWN: JPH	CHECKED: JBD	DATE:
NOT FOR CONSTRUCTION	CHECKED: JLC	CHECKED: JBD		

INDIANA		DEPARTMENT OF TRANSPORTATION	
CONSTRUCTION DETAILS		1-65	
LINE 'E'			

HORIZONTAL SCALE	VERTICAL SCALE	DESIGNATION	BRIDGE FILE
N/A	N/A	140071	
SURVEY BOOK	SHEETS	CD-48	
N/A	15	14	
CONTRACT	PROJECT	275	
R-29231			140071



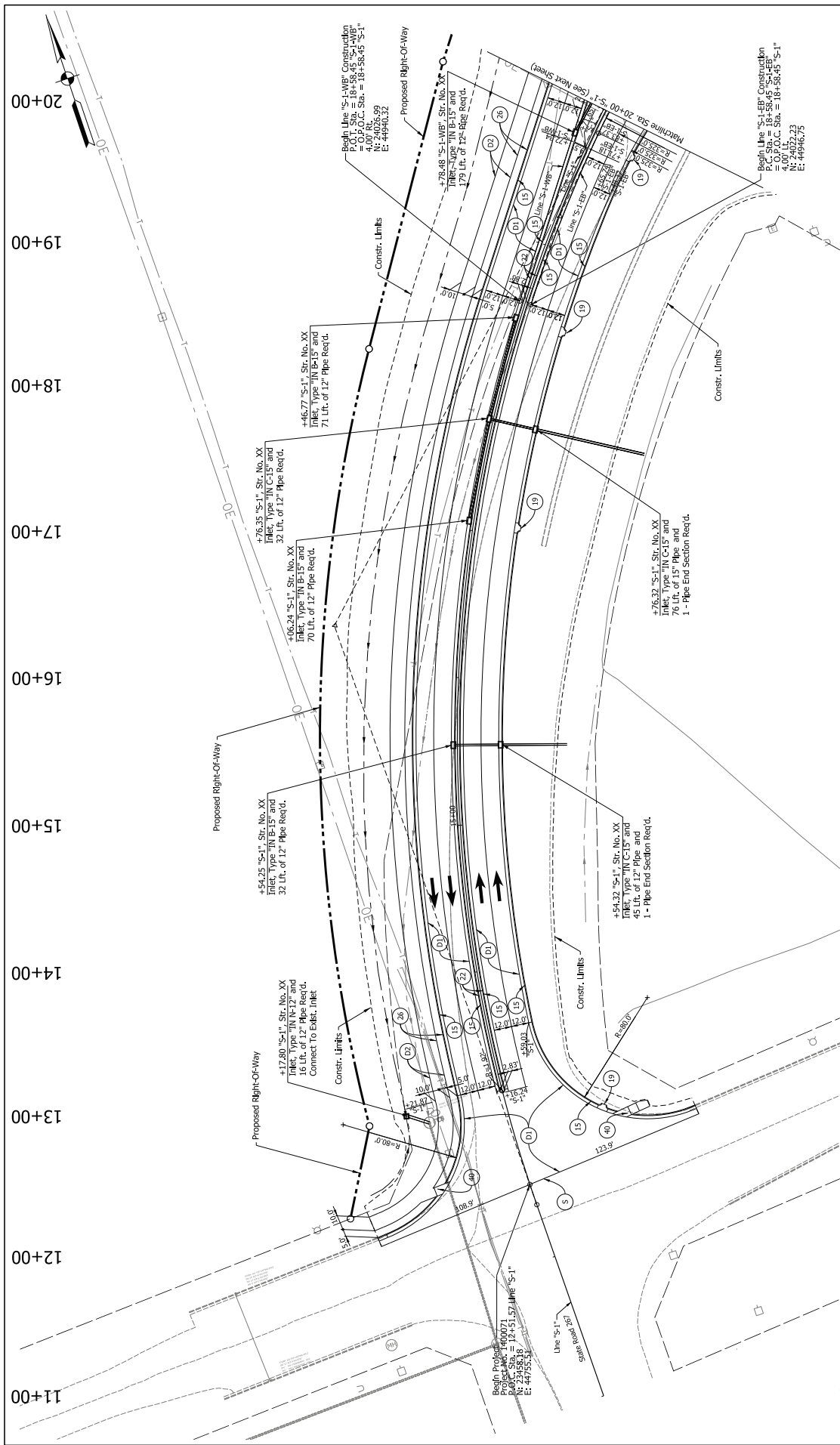


NOT FOR CONSTRUCTION <b>DRAFT</b>	RECOMMENDED FOR APPROVAL		DESIGN ENGINEERS		DATE
	DESIGNER: JBD	CHECKED: JLC	DRAWN: DPH	CHECKED: JBD	
INDIANA DEPARTMENT OF TRANSPORTATION			CONSTRUCTION DETAILS		
BRIDGE FILE			PROJECT		
HORIZONTAL SCALE			CONTRACT		
VERTICAL SCALE			R-29321		
DESIGNATION			SHEETS		
SURVEY BOOK			OF 275		
SHEETS			PROJECT		
140071			480071		

Notes:  
See Sheet No. XX For The Construction Detail Legend







NOT FOR CONSTRUCTION <b>DRAFT</b>	RECOMMENDED FOR APPROVAL		DESIGN ENGINEERS		DATE
	DESIGNER: JBD	CHECKED: JLC	DRAWN: JPH	CHECKED: JBD	
INDIANA DEPARTMENT OF TRANSPORTATION			CONSTRUCTION DETAILS		
S.R. 267			LINE "S-1"		
BRIDGE FILE		HORIZONTAL SCALE		VERTICAL SCALE	
140071		N/A		N/A	
SHEETS: CD-18		SURVEY BOOK		CONTRACT	
90		N/A		R-29231	
OF 275		PROJECT		PLAN 0071	

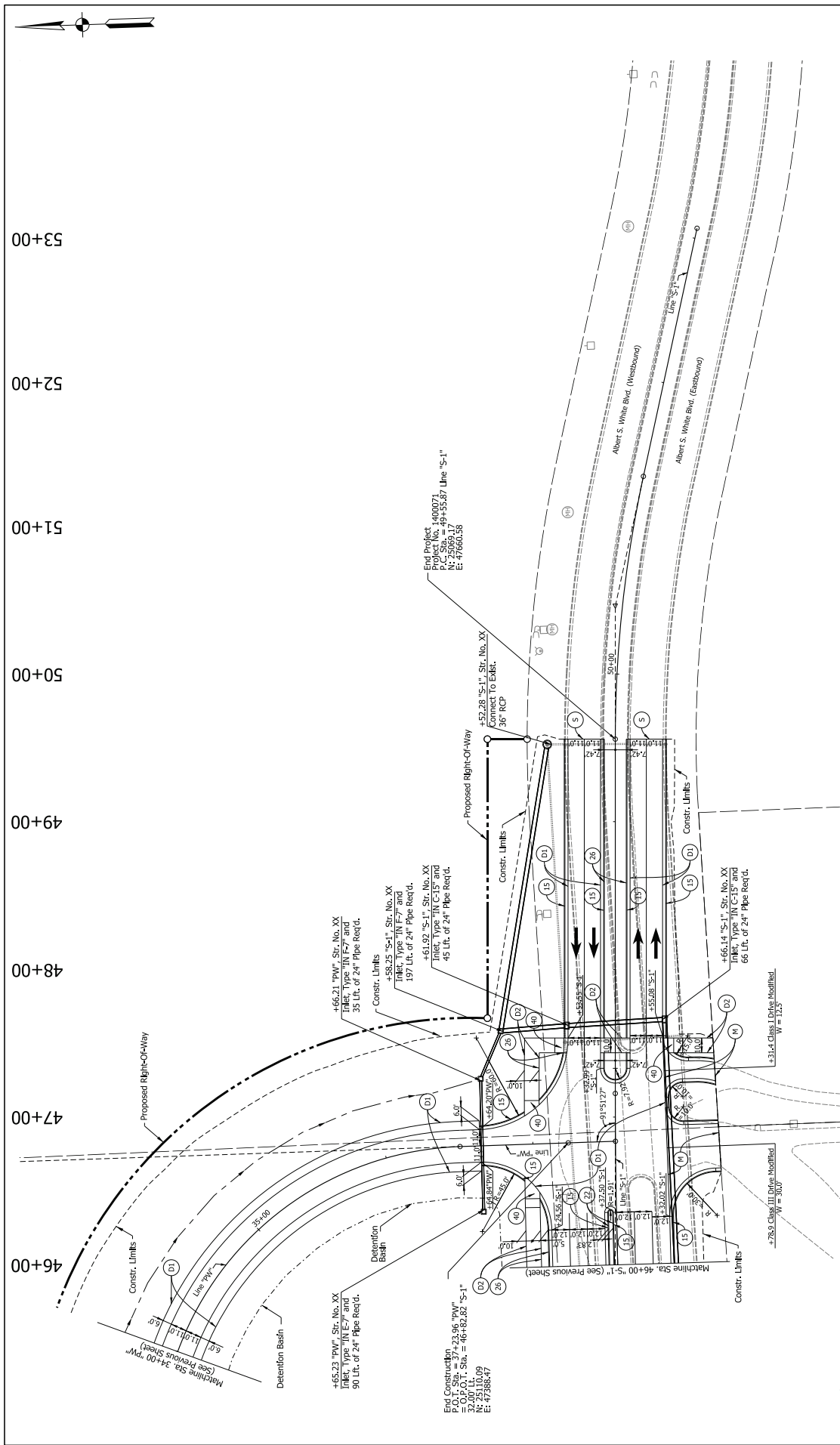
Notes:  
See Sheet No. XX For The Construction Detail Legend







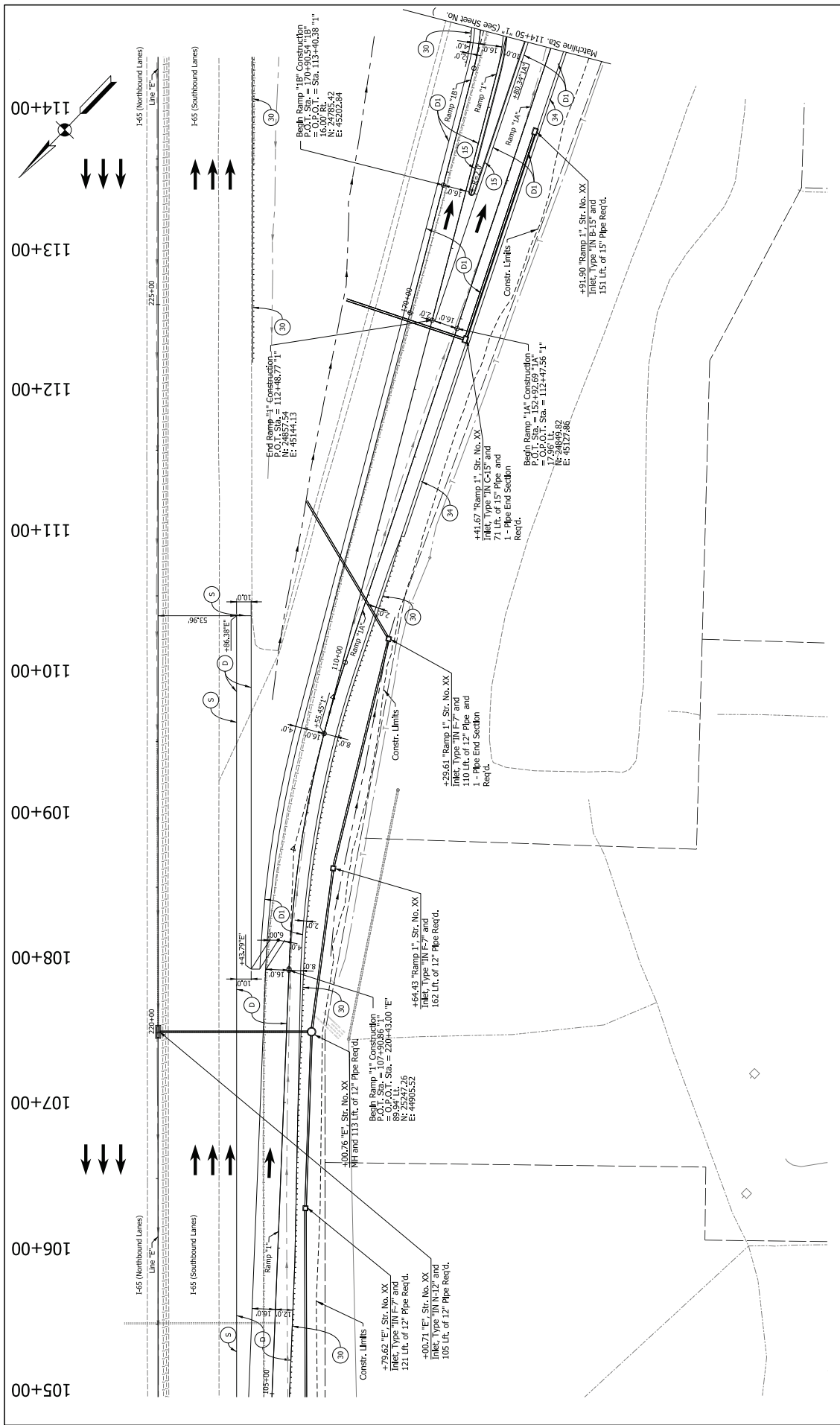




Notes:  
See Sheet No. XX For The Construction Detail Legend

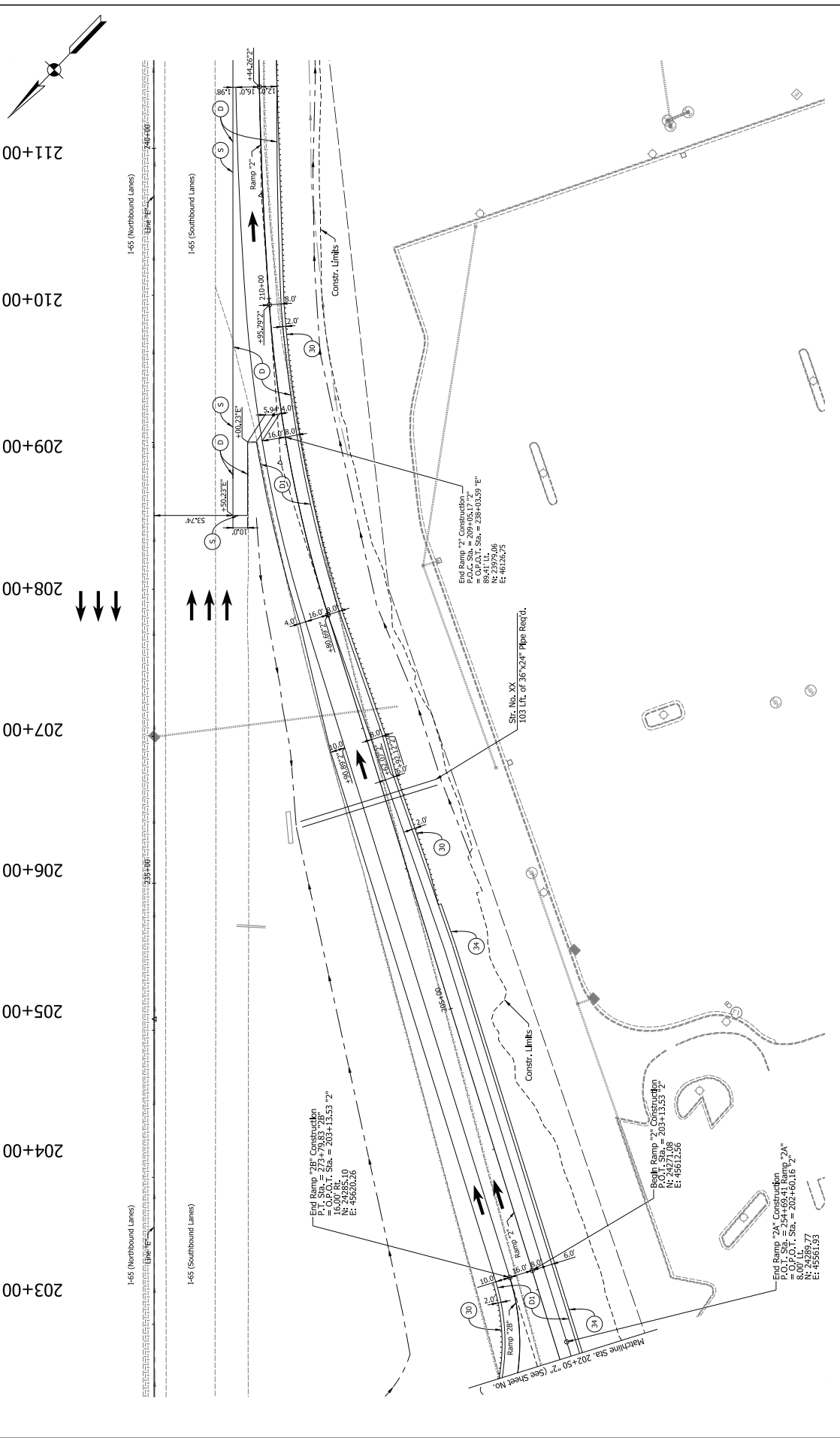
RECOMMENDED FOR APPROVAL		DESIGN ENGINEERS		DATE
DESIGNER: JBD	CHECKED: JLC	DRAWN: DPH	CHECKED: JBD	

INDIANA		BRIDGE FILE	
DEPARTMENT OF TRANSPORTATION		RESUBMITTAL	
CONSTRUCTION DETAILS		RESUBMITTAL	
S.R. 267		SHEETS CD-4	
LINE "S-1"		PROJECT	
		R-29231	
		4	
		94	
		CD-4	
		PROJECT	
		R-29231	
		4	
		94	
		CD-4	
		PROJECT	
		R-29231	
		4	
		94	
		CD-4	
		PROJECT	
		R-29231	
		4	
		94	
		CD-4	
		PROJECT	
		R-29231	
		4	
		94	
		CD-4	
		PROJECT	
		R-29231	
		4	
		94	
		CD-4	
		PROJECT	
		R-29231	
		4	
		94	
		CD-4	
		PROJECT	
		R-29231	
		4	
		94	
		CD-4	
		PROJECT	
		R-29231	
		4	
		94	
		CD-4	
		PROJECT	
		R-29231	
		4	
		94	
		CD-4	
		PROJECT	
		R-29231	
		4	
		94	
		CD-4	
		PROJECT	
		R-29231	
		4	
		94	
		CD-4	
		PROJECT	
		R-29231	
		4	
		94	
		CD-4	
		PROJECT	
		R-29231	
		4	
		94	
		CD-4	
		PROJECT	
		R-29231	
		4	
		94	
		CD-4	
		PROJECT	
		R-29231	
		4	
		94	
		CD-4	
		PROJECT	
		R-29231	
		4	
		94	
		CD-4	
		PROJECT	
		R-29231	
		4	
		94	
		CD-4	
		PROJECT	
		R-29231	
		4	
		94	
		CD-4	
		PROJECT	
		R-29231	
		4	
		94	
		CD-4	
		PROJECT	
		R-29231	
		4	
		94	
		CD-4	
		PROJECT	
		R-29231	
		4	
		94	
		CD-4	
		PROJECT	
		R-29231	
		4	
		94	
		CD-4	
		PROJECT	
		R-29231	
		4	
		94	
		CD-4	
		PROJECT	
		R-29231	
		4	
		94	
		CD-4	
		PROJECT	
		R-29231	
		4	
		94	
		CD-4	
		PROJECT	
		R-29231	
		4	
		94	
		CD-4	
		PROJECT	
		R-29231	
		4	
		94	
		CD-4	
		PROJECT	
		R-29231	
		4	
		94	
		CD-4	
		PROJECT	
		R-29231	
		4	
		94	
		CD-4	
		PROJECT	
		R-29231	
		4	
		94	
		CD-4	
		PROJECT	
		R-29231	
		4	
		94	
		CD-4	
		PROJECT	
		R-29231	
		4	
		94	
		CD-4	
		PROJECT	
		R-29231	
		4	
		94	
		CD-4	
		PROJECT	
		R-29231	
		4	
		94	
		CD-4	
		PROJECT	
		R-29231	
		4	
		94	
		CD-4	
		PROJECT	
		R-29231	
		4	
		94	
		CD-4	
		PROJECT	
		R-29231	
		4	
		94	
		CD-4	
		PROJECT	
		R-29231	
		4	
		94	
		CD-4	
		PROJECT	
		R-29231	
		4	
		94	
		CD-4	
		PROJECT	
		R-29231	
		4	
		94	
		CD-4	
		PROJECT	
		R-29231	
		4	
		94	
		CD-4	
		PROJECT	
		R-29231	
		4	
		94	
		CD-4	
		PROJECT	
		R-29231	
		4	
		94	
		CD-4	
		PROJECT	
		R-29231	
		4	
		94	
		CD-4	
		PROJECT	
		R-29231	
		4	
		94	
		CD-4	
		PROJECT	
		R-29231	
		4	
		94	
		CD-4	
		PROJECT	
		R-29231	
		4	
		94	
		CD-4	
		PROJECT	
		R-29231	
		4	
		94	
		CD-4	
		PROJECT	
		R-29231	
		4	
		94	
		CD-4	
		PROJECT	
		R-29231	
		4	
		94	
		CD-4	
		PROJECT	
		R-29231	
		4	
		94	
		CD-4	
		PROJECT	
		R-29231	
		4	
		94	
		CD-4	
		PROJECT	
		R-29231	
		4	
		94	
		CD-4	
		PROJECT	
		R-29231	
		4	
		94	
		CD-4	
		PROJECT	
		R-29231	
		4	
		94	
		CD-4	
		PROJECT	
		R-29231	
		4	
		94	
		CD-4	
		PROJECT	
		R-29231	
		4	
		94	
		CD-4	
		PROJECT	
		R-29231	
		4	
		94	
		CD-4	
		PROJECT	
		R-29231	
		4	
		94	
		CD-4	
		PROJECT	
		R-29231	
		4	
		94	
		CD-4	
		PROJECT	
		R-29231	
		4	
		94	
		CD-4	
		PROJECT	
		R-29231	
		4	
		94	
		CD-4	
		PROJECT	
		R-29231	
		4	
		94	
		CD-4	
		PROJECT	
		R-29231	
		4	
		94	
		CD-4	
		PROJECT	
		R-29231	
		4	
		94	
		CD-4	
		PROJECT	
		R-29231	
		4	
		94	
		CD-4	
		PROJECT	
		R-29231	
		4	
		94	
		CD-4	
		PROJECT	
		R-29231	
		4	
		94	
		CD-4	
		PROJECT	
		R-29231	
		4	
		94	
		CD-4	
		PROJECT	
		R-29231	
		4	
		94	
		CD-4	
		PROJECT	
		R-29231	
		4	
		94	
		CD-4	
		PROJECT	
		R-29231	
		4	
		94	
		CD-4	
		PROJECT	
		R-29231	
		4	
		94	
		CD-4	
		PROJECT	
		R-29231	
		4	
		94	
		CD-4	
		PROJECT	
		R-29231	
		4	
		94	
		CD-4	
		PROJECT	
		R-29231	
		4	
		94	
		CD-4	
		PROJECT	
		R-29231	
		4	
		94	
		CD-4	
		PROJECT	
		R-29231	
		4	
		94	
		CD-4	
		PROJECT	
		R-29231	
		4	
		94	
		CD-4	
		PROJECT	
		R-29231	
		4	
		94	
		CD-4	
		PROJECT	
		R-29231	
		4	
		94	
		CD-4	
		PROJECT	
		R-29231	
		4	
		94	
		CD-4	
		PROJECT	
		R-29231	
		4	
		94	
		CD-4	
		PROJECT	
		R-29231	
		4	
		94	
		CD-4	
		PROJECT	
		R-29231	
		4	
		94	
		CD-4	
		PROJECT	
		R-29231	
		4	
		94	
		CD-4	
		PROJECT	
		R-292	



NOT FOR CONSTRUCTION <b>DRAFT</b>	RECOMMENDED FOR APPROVAL	DESIGN ENGINEERS	DATE
	DESIGNER: JDO	DRAWN: JPH	CHECKED: JDO
INDIANA DEPARTMENT OF TRANSPORTATION	HORIZONTAL SCALE	BRIDGE FILE	
	VERTICAL SCALE	RESOLUTION	
CONSTRUCTION DETAILS RAMP 1"	SURVEY BOOK	SHEETS	
	CONTRACT	CD-13	
	PROJECT	95	
		PAGE	
		R-29231	
		R-0071	

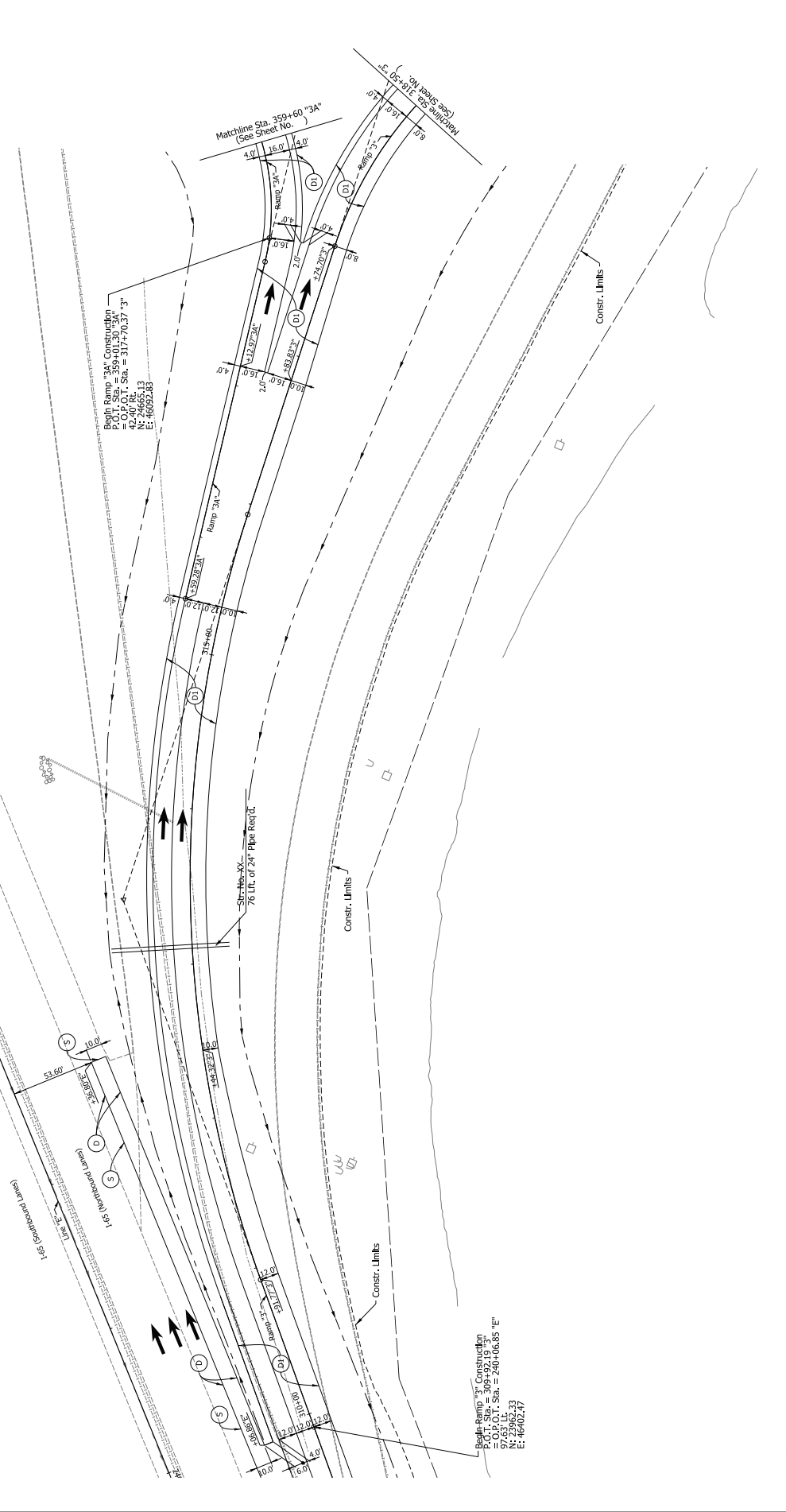
Notes:  
See Sheet No. XX For The Construction Detail Legend



NOT FOR CONSTRUCTION <b>DRAFT</b>	RECOMMENDED FOR APPROVAL	DESIGN ENGINEERS	DATE
	DESIGNER: JDO	DRAWN: JPH	CHECKED: JDO
Notes: See Sheet No. XX For The Construction Detail Legend	INDIANA DEPARTMENT OF TRANSPORTATION		
	CONSTRUCTION DETAILS RAMP 12 <sup>th</sup>		
BRIDGE FILE		DESIGNATION	
HORIZONTAL SCALE		VERTICAL SCALE	
N/A		N/A	
SURVEY BOOK		SHEETS	
N/A		96	
CONTRACT		PROJECT	
R-29231		CD-48	
R-29231		CD-48	
R-29231		R-29231	



310+00 311+00 312+00 313+00 314+00 315+00 316+00 317+00 318+00



Begin Ramp 3% Construction  
 = O.P.O.C. Sta. = 317+40.37"  
 N: 49.65' L: 13  
 E: 46692.83

Begin Ramp 3% Construction  
 = O.P.O.C. Sta. = 241+06.85"  
 N: 57.57' L: 13  
 E: 46602.47

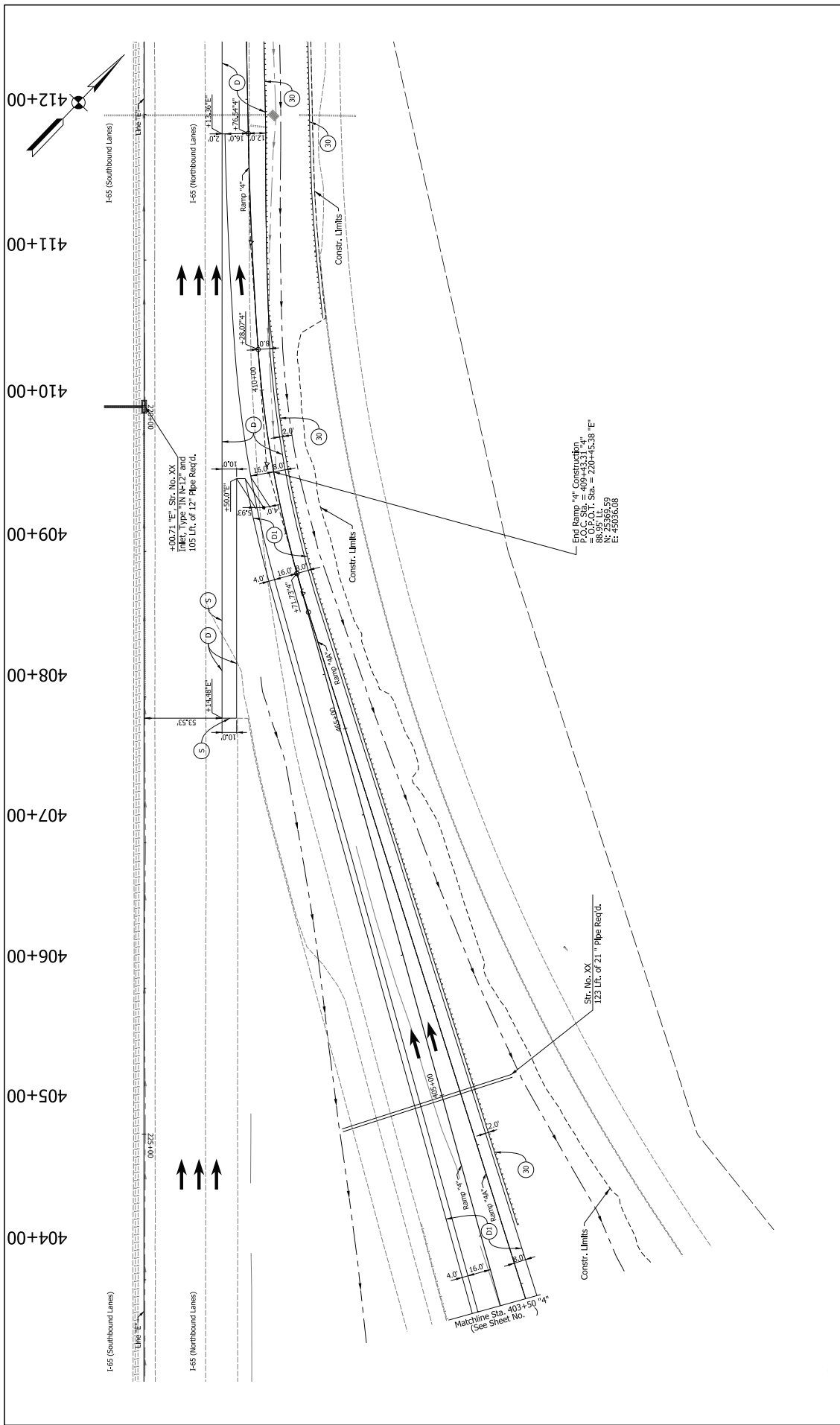
Notes:  
 See Sheet No. XX For The Construction Detail Legend

DRAFT  
 NOT FOR CONSTRUCTION

RECOMMENDED FOR APPROVAL		DESIGN ENGINEERS		DATE
DESIGNER:	JDO	DRAWN:	DPH	
CHECKED:	JLC	CHECKED:	JBO	

INDIANA		DEPARTMENT OF TRANSPORTATION	
CONSTRUCTION DETAILS			
RAMP 3%			

HORIZONTAL SCALE	BRIDGE FILE
VERTICAL SCALE	DESIGNATION
SURVEY BOOK	SHEETS
N/A	47
N/A	275
CONTRACT	PROJECT
R-29231	R-29231
	466971



NOT FOR CONSTRUCTION <b>DRAFT</b>	RECOMMENDED FOR APPROVAL		DESIGN ENGINEERS		DATE
	DESIGNER: JDO	DRAWN: DPH	CHECKED: JLC	CHECKED: JDO	
Notes: See Sheet No. XX For The Construction Detail Legend	INDIANA DEPARTMENT OF TRANSPORTATION			BRIDGE FILE	
	CONSTRUCTION DETAILS RAMP #4			HORIZONTAL SCALE	DESIGNATION
			VERTICAL SCALE	140071	
			SURVEY BOOK	SHEETS CD-18	
			N/A	PROJECT	
			CONTRACT	R-29231	
				PAGE	
				4 OF 275	
				PROJECT	
				R-29231	
				PAGE	
				4 OF 275	
				PROJECT	
				R-29231	
				PAGE	
				4 OF 275	
				PROJECT	
				R-29231	
				PAGE	
				4 OF 275	
				PROJECT	
				R-29231	
				PAGE	
				4 OF 275	
				PROJECT	
				R-29231	
				PAGE	
				4 OF 275	
				PROJECT	
				R-29231	
				PAGE	
				4 OF 275	
				PROJECT	
				R-29231	
				PAGE	
				4 OF 275	
				PROJECT	
				R-29231	
				PAGE	
				4 OF 275	
				PROJECT	
				R-29231	
				PAGE	
				4 OF 275	
				PROJECT	
				R-29231	
				PAGE	
				4 OF 275	
				PROJECT	
				R-29231	
				PAGE	
				4 OF 275	
				PROJECT	
				R-29231	
				PAGE	
				4 OF 275	
				PROJECT	
				R-29231	
				PAGE	
				4 OF 275	
				PROJECT	
				R-29231	
				PAGE	
				4 OF 275	
				PROJECT	
				R-29231	
				PAGE	
				4 OF 275	
				PROJECT	
				R-29231	
				PAGE	
				4 OF 275	
				PROJECT	
				R-29231	
				PAGE	
				4 OF 275	
				PROJECT	
				R-29231	
				PAGE	
				4 OF 275	
				PROJECT	
				R-29231	
				PAGE	
				4 OF 275	
				PROJECT	
				R-29231	
				PAGE	
				4 OF 275	
				PROJECT	
				R-29231	
				PAGE	
				4 OF 275	
				PROJECT	
				R-29231	
				PAGE	
				4 OF 275	
				PROJECT	
				R-29231	
				PAGE	
				4 OF 275	
				PROJECT	
				R-29231	
				PAGE	
				4 OF 275	
				PROJECT	
				R-29231	
				PAGE	
				4 OF 275	
				PROJECT	
				R-29231	
				PAGE	
				4 OF 275	
				PROJECT	
				R-29231	
				PAGE	
				4 OF 275	
				PROJECT	
				R-29231	
				PAGE	
				4 OF 275	
				PROJECT	
				R-29231	
				PAGE	
				4 OF 275	
				PROJECT	
				R-29231	
				PAGE	
				4 OF 275	
				PROJECT	
				R-29231	
				PAGE	
				4 OF 275	
				PROJECT	
				R-29231	
				PAGE	
				4 OF 275	
				PROJECT	
				R-29231	
				PAGE	
				4 OF 275	
				PROJECT	
				R-29231	
				PAGE	
				4 OF 275	
				PROJECT	
				R-29231	
				PAGE	
				4 OF 275	
				PROJECT	
				R-29231	
				PAGE	
				4 OF 275	
				PROJECT	
				R-29231	
				PAGE	
				4 OF 275	
				PROJECT	
				R-29231	
				PAGE	
				4 OF 275	
				PROJECT	
				R-29231	
				PAGE	
				4 OF 275	
				PROJECT	
				R-29231	
				PAGE	
				4 OF 275	
				PROJECT	
				R-29231	
				PAGE	
				4 OF 275	
				PROJECT	
				R-29231	
				PAGE	
				4 OF 275	
				PROJECT	
				R-29231	
				PAGE	
				4 OF 275	
				PROJECT	
				R-29231	
				PAGE	
				4 OF 275	
				PROJECT	
				R-29231	
				PAGE	
				4 OF 275	
				PROJECT	
				R-29231	
				PAGE	
				4 OF 275	
				PROJECT	
				R-29231	
				PAGE	
				4 OF 275	
				PROJECT	
				R-29231	
				PAGE	
				4 OF 275	
				PROJECT	
				R-29231	
				PAGE	
				4 OF 275	
				PROJECT	
				R-29231	
				PAGE	
				4 OF 275	
				PROJECT	
				R-29231	
				PAGE	
				4 OF 275	
				PROJECT	
				R-29231	
				PAGE	
				4 OF 275	
				PROJECT	
				R-29231	
				PAGE	
				4 OF 275	
				PROJECT	
				R-29231	
				PAGE	
				4 OF 275	
				PROJECT	
				R-29231	
				PAGE	
				4 OF 275	
				PROJECT	
				R-29231	
				PAGE	
				4 OF 275	
				PROJECT	
				R-29231	
				PAGE	
				4 OF 275	
				PROJECT	
				R-29231	
				PAGE	
				4 OF 275	
				PROJECT	
				R-29231	
				PAGE	
				4 OF 275	
				PROJECT	
				R-29231	
				PAGE	
				4 OF 275	
				PROJECT	
				R-29231	
				PAGE	
				4 OF 275	
				PROJECT	
				R-29231	
				PAGE	
				4 OF 275	
				PROJECT	
				R-29231	
				PAGE	
				4 OF 275	
				PROJECT	
				R-29231	
				PAGE	
				4 OF 275	
				PROJECT	
				R-29231	
				PAGE	
				4 OF 275	
				PROJECT	
				R-29231	
				PAGE	
				4 OF 275	
				PROJECT	
				R-29231	
				PAGE	
				4 OF 275	
				PROJECT	
				R-29231	
				PAGE	
				4 OF 275	
				PROJECT	
				R-29231	
				PAGE	
				4 OF 275	
				PROJECT	
				R-29231	
				PAGE	
				4 OF 275	
				PROJECT	
				R-29231	
				PAGE	
				4 OF 275	
				PROJECT	
				R-29231	
				PAGE	
				4 OF 275	
				PROJECT	
				R-29231	
				PAGE	
				4 OF 275	
				PROJECT	
				R-29231	
				PAGE	
				4 OF 275	
				PROJECT	
				R-29231	
				PAGE	
				4 OF 275	
				PROJECT	
				R-29231	
				PAGE	
				4 OF 275	
				PROJECT	
				R-29231	
				PAGE	
				4 OF 275	
				PROJECT	
				R-29231	
				PAGE	
				4 OF 275	
				PROJECT	
				R-29231	
				PAGE	
				4 OF 275	
				PROJECT	
				R-29231	
				PAGE	
				4 OF 275	
				PROJECT	
				R-29231	
				PAGE	
				4 OF 275	
				PROJECT	
				R-29231	
				PAGE	
				4 OF 275	
				PROJECT	
				R-29231	
				PAGE	
				4 OF 275	
				PROJECT	
				R-29231	
				PAGE	
				4 OF 275	
				PROJECT	
				R-29231	
				PAGE	
				4 OF 275	
				PROJECT	
				R-29231	
				PAGE	
				4 OF 275	
				PROJECT	
				R-29231	
				PAGE	
				4 OF 275	
				PROJECT	
				R-29231	
				PAGE	
				4 OF 275	
				PROJECT	
				R-29231	
				PAGE	
				4 OF 275	
				PROJECT	
			</		