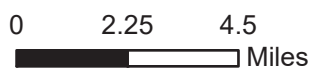
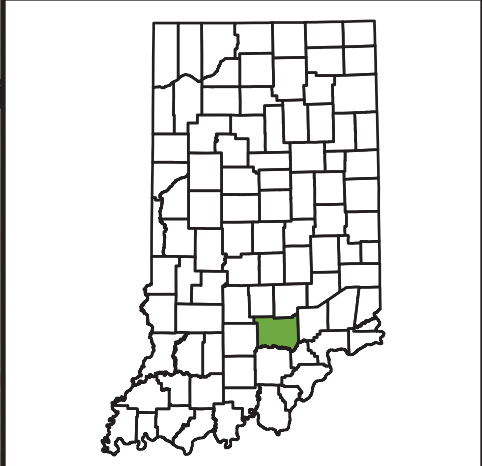
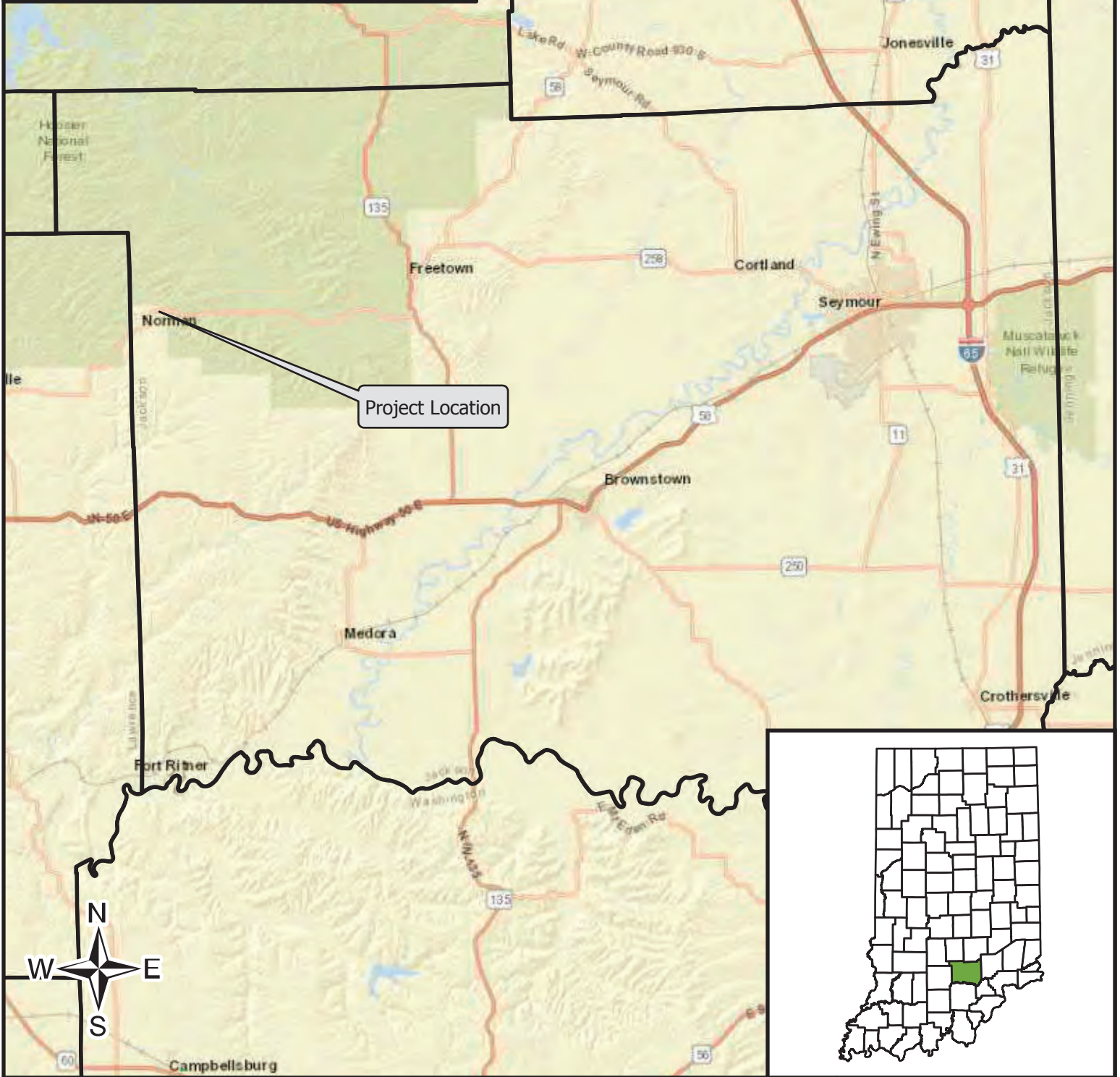


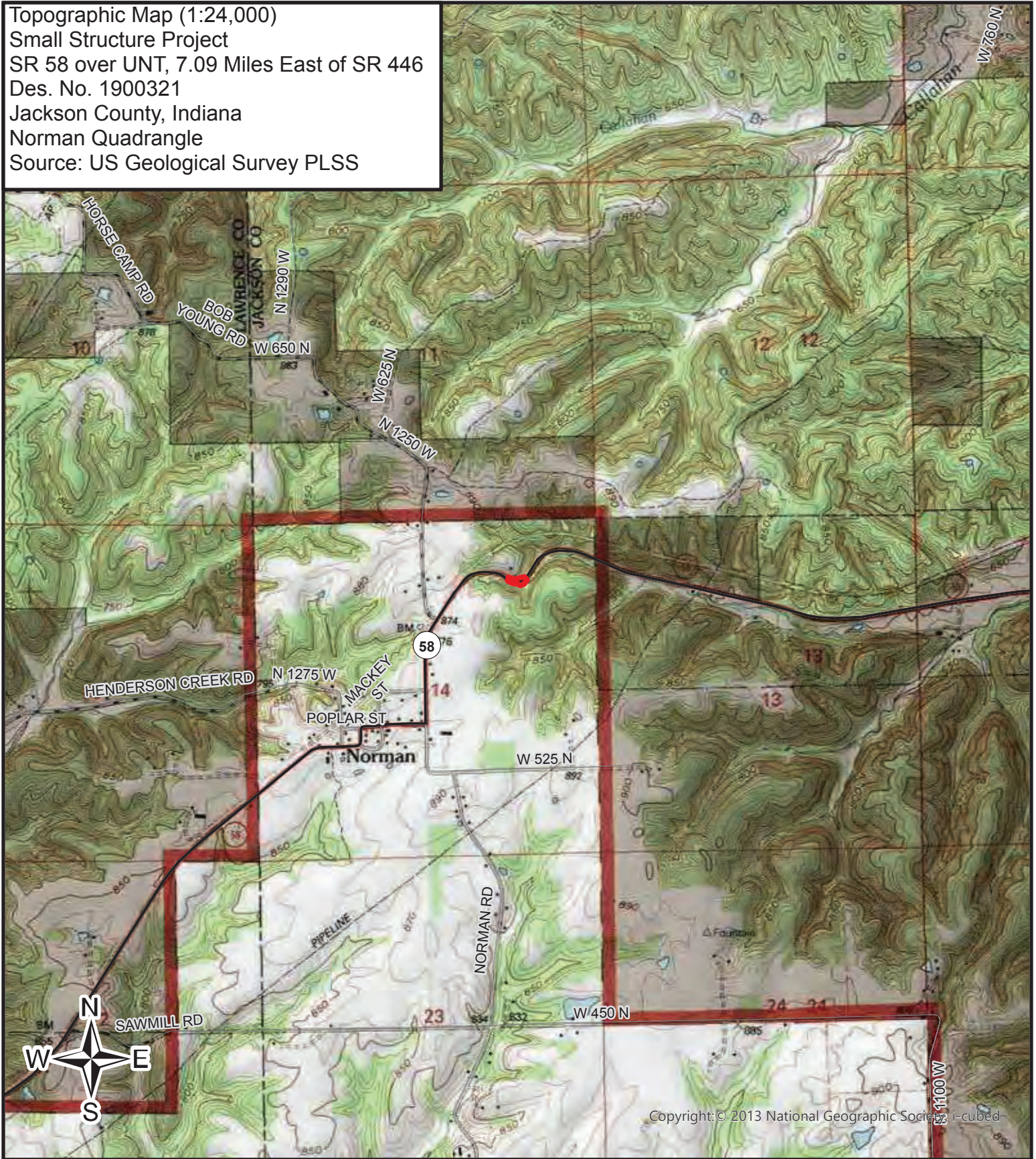
Project Location Map (1:246,741)  
Small Structure Project  
SR 58 over UNT, 7.09 Miles East of SR 446  
Des. No. 1900321  
Jackson County, Indiana  
Source: Indiana Geological Survey



County Boundary  
Project County



Topographic Map (1:24,000)  
Small Structure Project  
SR 58 over UNT, 7.09 Miles East of SR 446  
Des. No. 1900321  
Jackson County, Indiana  
Norman Quadrangle  
Source: US Geological Survey PLSS



Copyright: © 2013 National Geographic Society, i-cubed

0 1,250 2,500  
Feet

 Project Area



11/30/2020

Aerial Map (1:1,000)  
Small Structure Project  
SR 58 over UNT, 7.09 Miles East of SR 446  
Des. No. 1900321  
Jackson County, Indiana  
Source: NAIP 2016 Imagery



National Agriculture Imagery Program (NAIP), Farm Services Agency (FSA), U.S. Department of Agriculture (USDA), UIITS, Indiana Spatial Data Portal

0 55 110 Feet

 Project Area



11/30/2020