

PROJECT	DESIGNATION
1601040	1601040
CONTRACT	BRIDGE FILE
R-39919	-----

INDIANA DEPARTMENT OF TRANSPORTATION



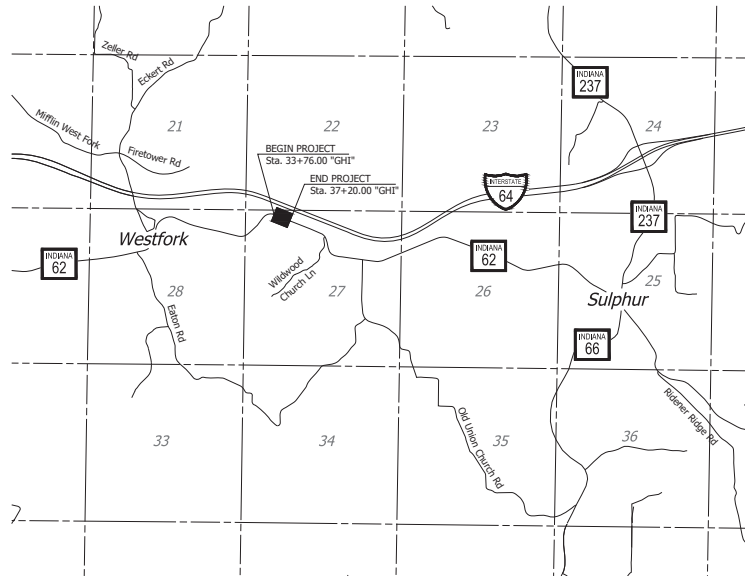
KIN PROJECT INFORMATION	
DESIGNATION	PROJECT DESCRIPTION
* 1601032	Slide Correction along SR 62, Approximately 2.0 miles E of SR-237
1601033	Slide Correction along SR 62, Approximately 2.51 miles W of SR-66N
1601034	Slide Correction along SR 62, Approximately 0.88 miles E of SR-37
1601035	Slide Correction along SR 62, Approximately 1.18 miles E of SR-37
1601036	Slide Correction along SR 62, Approximately 2.78 miles E of SR-37
1601037	Slide Correction along SR 62, Approximately 3.40 miles W of SR-237
1601038	Slide Correction along SR 62, Approximately 2.85 miles W of SR-237
1601039	Slide Correction along SR 62, Approximately 2.68 miles W of SR-237
1601041	Slide Correction along SR 62, Approximately 2.10 miles W of SR-237
1601042	Slide Correction along SR 62, Approximately 1.95 miles W of SR-237
1601043	Slide Correction along SR 62, Approximately 0.70 miles E of SR-237

* LEAD DESIGNATION

ROAD PLANS

PROJECT NO. 1601040 P.E.
PROJECT NO. 1601040 R/W
PROJECT NO. 1601040 CONST.
ROUTE: S.R. 62 AT: RP 96+36

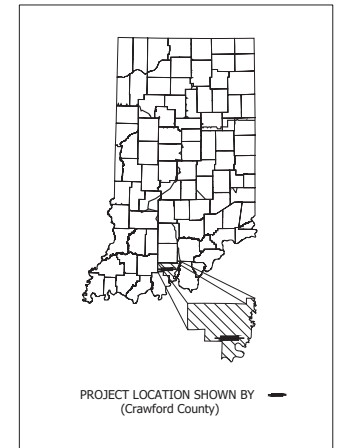
Slide Correction is Located Along S.R. 62, Approximately 2.44 Miles West of S.R. 237, in Section 27, T35, R1W in Union TWP, Crawford County Indiana.



LOCATION MAP

TRAFFIC DATA	
A.A.D.T. (2021)	317 V.P.D.
A.A.D.T. (2041)	317 V.P.D.
D.H.V. (2041)	32 V.P.H.
DIRECTIONAL DISTRIBUTION	50.47 %
TRUCKS	2.52% A.A.D.T. 3.13% D.H.V.

DESIGN DATA	
DESIGN SPEED	45 M.P.H.
PROJECT DESIGN CRITERIA	3R (Non-Freeway)
FUNCTIONAL CLASSIFICATION	State Collector
RURAL/URBAN	Rural
TERRAIN	Rolling
ACCESS CONTROL	None



LATITUDE: 38°14'08" N	LONGITUDE: 86°30'39" W
BRIDGE LENGTH: ----- MI.	
ROADWAY LENGTH: 0.065 MI.	
TOTAL LENGTH: 0.065 MI.	
MAX. GRADE: 8.25 %	
H.U.C. 14	05140104180100 05140104180080

STAGE 3 PLANS
--/--/21

INDIANA DEPARTMENT OF TRANSPORTATION
STANDARD SPECIFICATIONS DATED 2022
TO BE USED WITH THESE PLANS

Plans Prepared By:

LOCHMULLER GROUP
 6200 Vogel Road
 Evansville, Indiana 47715
 Phone: 812.479.6200
 Toll Free: 800.423.7411

SOIL CONSULTANTS
 EARTH EXPLORATION, INC.
 7770 WEST NEW YORK STREET
 INDIANAPOLIS, INDIANA 46214

Preliminary

PLANS PREPARED BY: _____ (____) _____
 PHONE NUMBER

CERTIFIED BY: _____ --/--/--
 DATE

APPROVED FOR LETTING: _____
 INDIANA DEPARTMENT OF TRANSPORTATION DATE

BRIDGE FILE	
DESIGNATION	
1601040	
SURVEY BOOK	SHEETS
CONTRACT	1 of 1
R-39919	PROJECT
	1601032

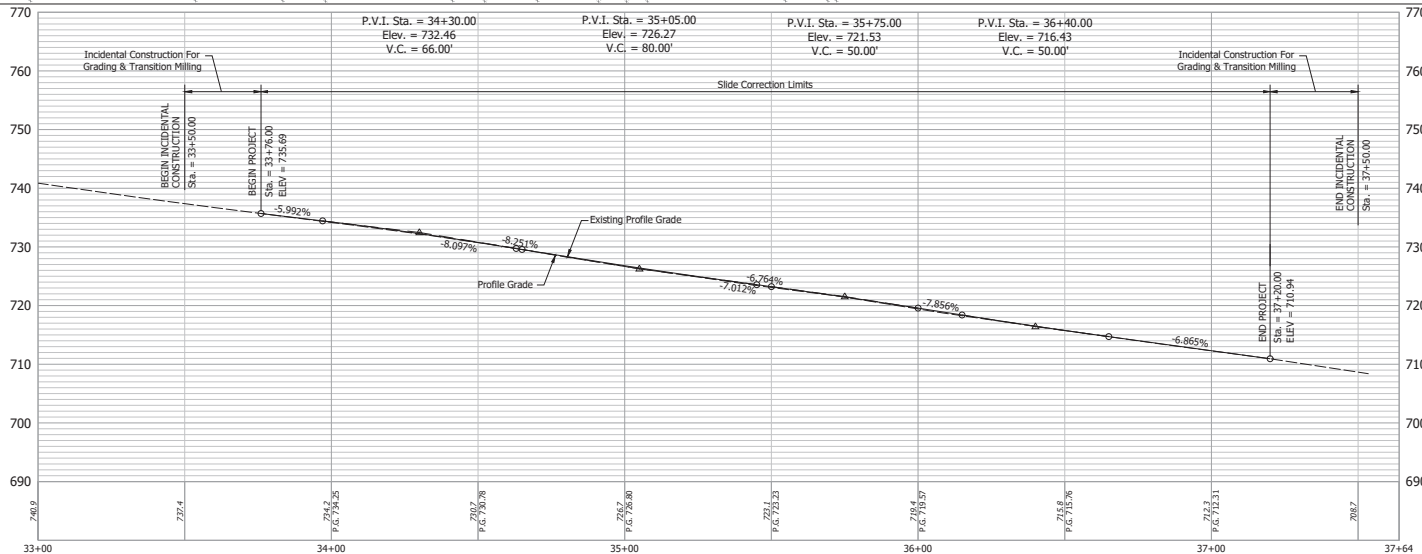
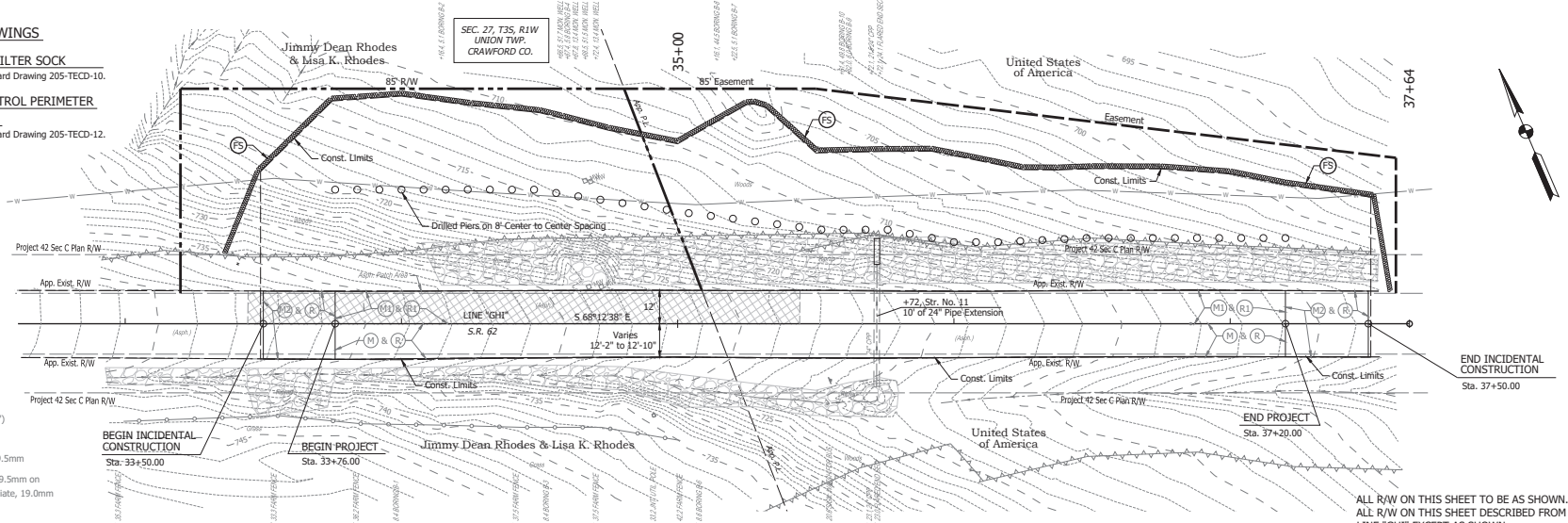
Date: Jan 27, 2021 10:28am User: jkennedy
 File: S:\2020\11\16\1601040\1601040\1601040\1601040\1601040\1601040.dwg

STANDARD INDOT DRAWINGS

- (FS) PERIMETER PROTECTION, FILTER SOCK
Installation shall be per INDOT Standard Drawing 205-TECD-10.
- (CE) TEMPORARY EROSION CONTROL PERIMETER CONSTRUCTION ENTRANCE
Installation shall be per INDOT Standard Drawing 205-TECD-12.

LEGEND
(FS) Filter Sock

- LEGEND**
- (H) Milling, Asphalt, 1.5"
 - (M1) Milling, Asphalt, 2.5" (Varies 1.5" to 3.0")
 - (M2) Milling, Transition
 - (R) 165#/SYS QC/QA-HMA, 3, 64 Surface, 9.5mm
 - (R1) 165#/SYS QC/QA-HMA, 3, 64, Surface, 9.5mm on 275#/SYS QC/QA-HMA, 2, 64, Intermediate, 19.0mm



- Notes:**
- 1) Station/Offset Topnotes, Benchmarks, & Right-of-Way Described from Line "GH1".
 - 2) See Geometric Tie-Up Sheet for Line "GH1" Alignment Information.
 - 3) All Stationing off of Line "GH1" Unless Otherwise Noted.

Preliminary

RECOMMENDED FOR APPROVAL	DESIGN ENGINEER	DATE
DESIGNED: NAW	DRAWN: CEW	
CHECKED: JAW	CHECKED: NAW	

**INDIANA
DEPARTMENT OF TRANSPORTATION**

LINE "GH1"

HORIZONTAL SCALE	BRIDGE FILE
1"=20'	
VERTICAL SCALE	DESIGNATION
1"=10'	1601040
SURVEY BOOK	SHEETS
	17 of 1
CONTRACT	PROJECT
R-39919	1601032

Date: 10/27/2021 10:28am User: jkenny_dfw File: S:\2020\17-AB251\17-AB251\17-AB251\17-AB251\17-AB251.dwg