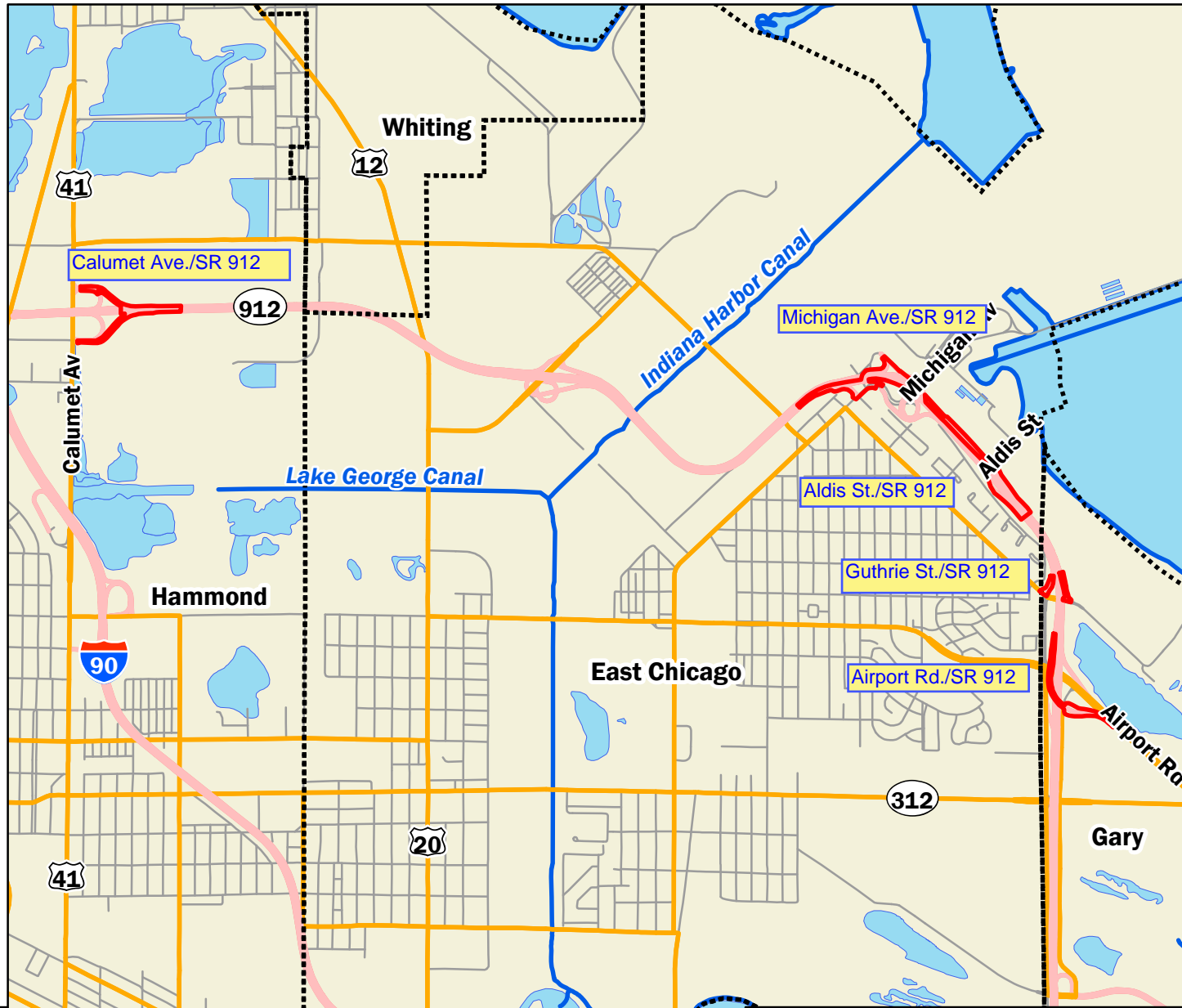
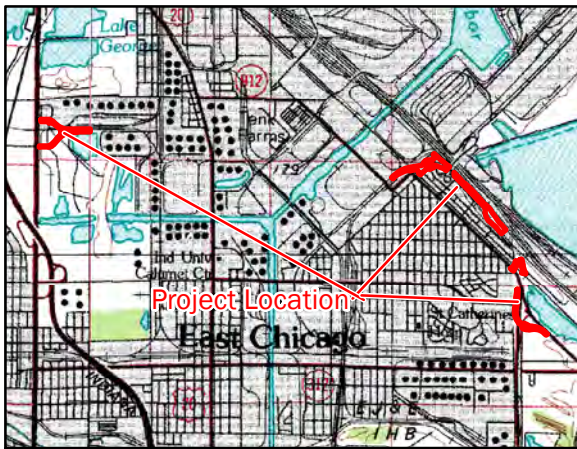
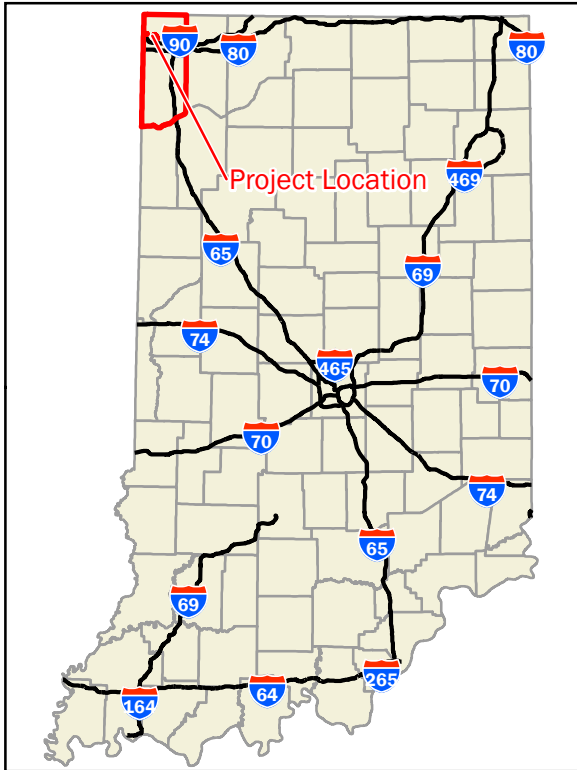
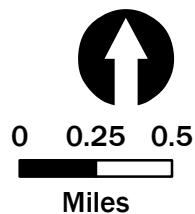


# Appendix B

## Graphics



-  Project Area
-  Interstate
-  Incorporated Areas
-  State Routes
-  Streams and Rivers
-  Local Roads
-  Lake



**SR 912 Roadway and Ramp Project  
Lake County, Indiana  
Project Location**

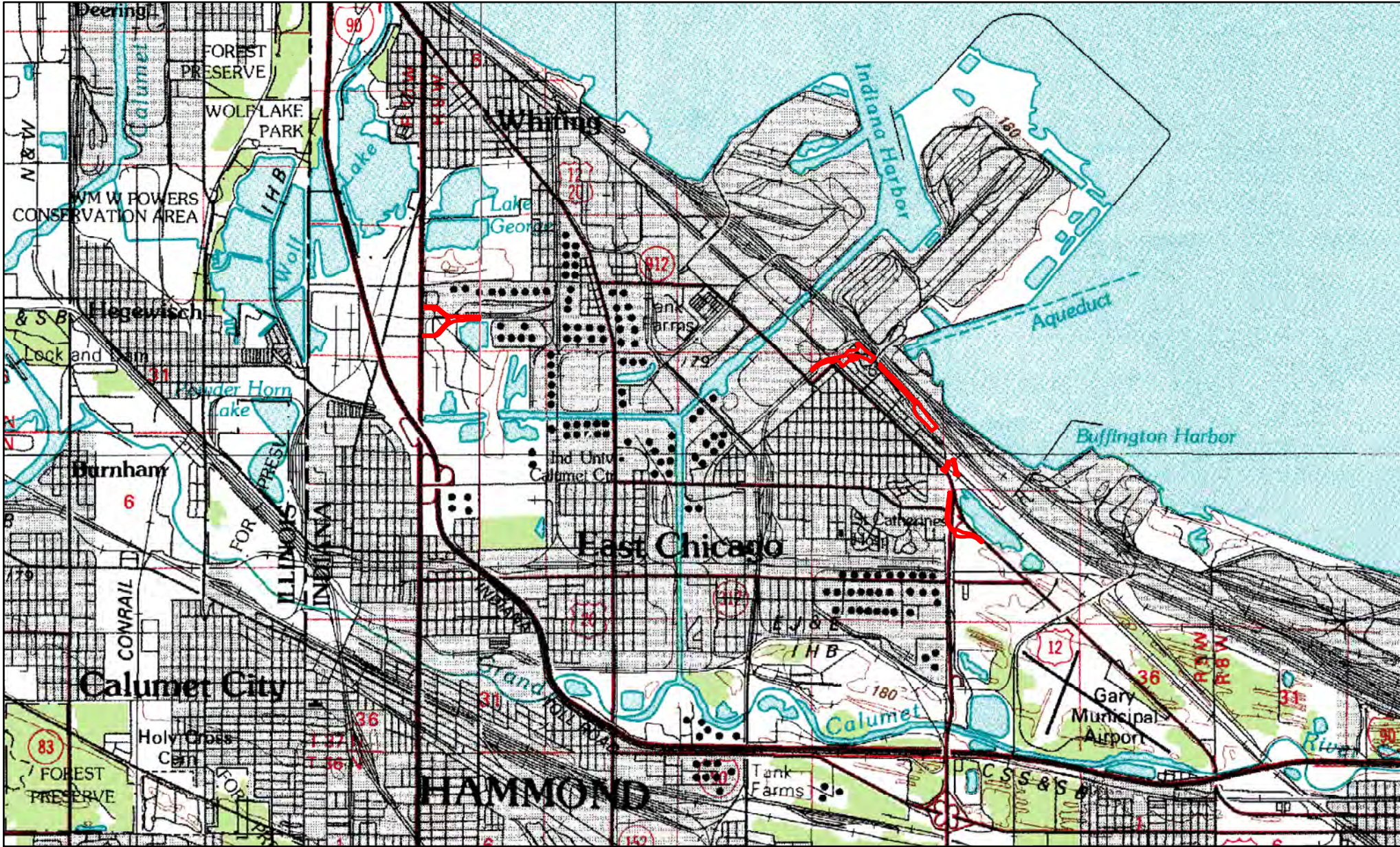
Sources:  
Non Orthophotography Data -  
Obtained from the State of Indiana Geographical  
Information Office Library  
Orthophotography -  
Obtained from Indiana Map  
Framework Data ([www.indianamap.org](http://www.indianamap.org))

Des. 180067 (Lead)

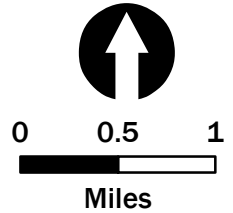
Date: 4/11/2022



**PARSONS**



 Project Area



**SR 912 Roadway and Ramp Project**  
 Lake County, Indiana  
 USGS Topographic

Sources:  
 Non Orthophotography Data -  
 Obtained from the State of Indiana Geographical  
 Information Office Library  
 Orthophotography -  
 Obtained from Indiana Map  
 Framework Data ([www.indianamap.org](http://www.indianamap.org))

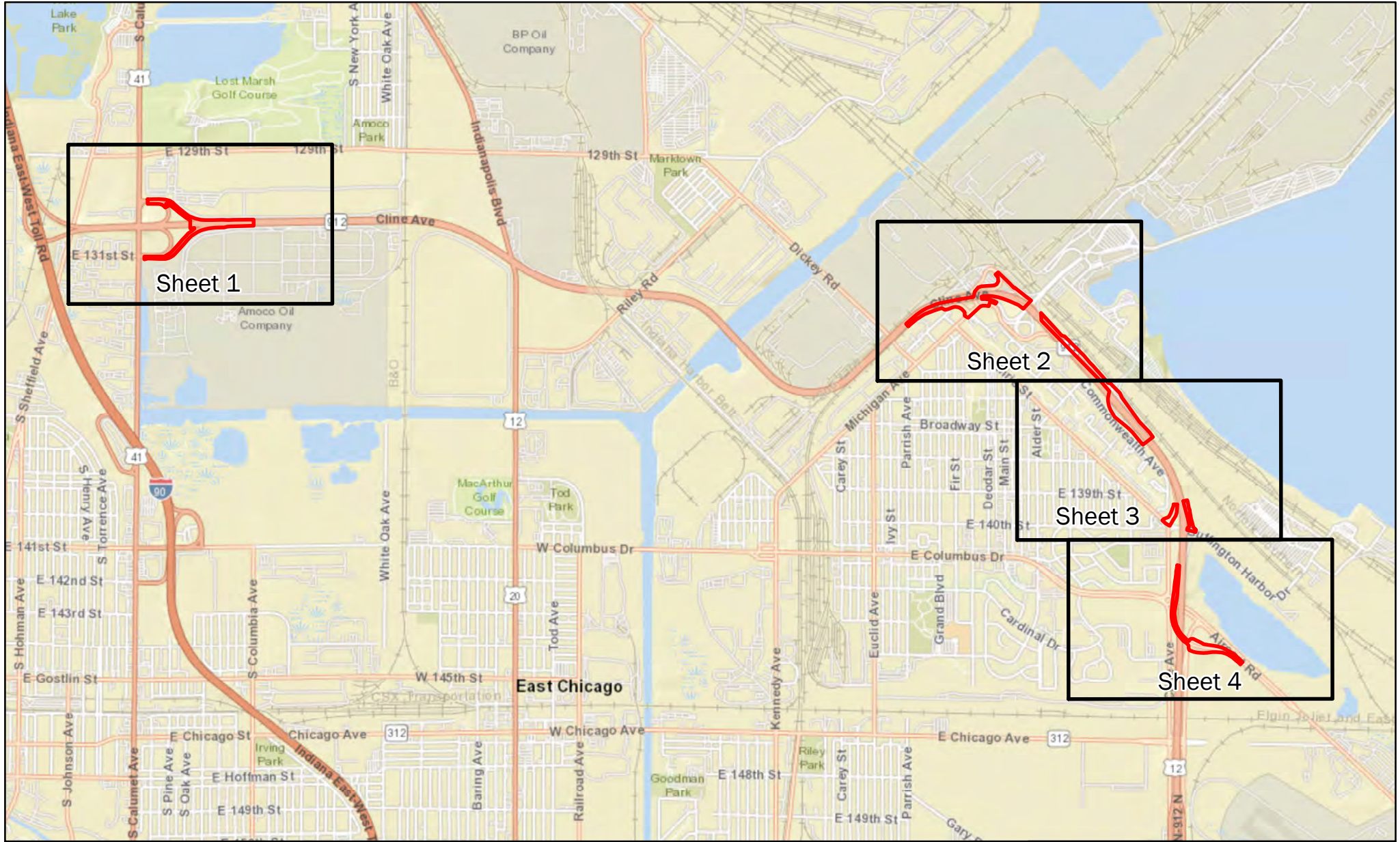
Des. 1800067 (Lead)

Date: 12/16/2021

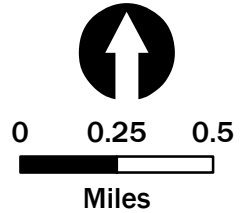


**PARSONS**

Created by: KDV



- ▭ Project Area
- Index Sheet



**SR 912 Roadway and Ramp Project  
Lake County, Indiana  
Index**

Sources:  
 Non Orthophotography Data -  
 Obtained from the State of Indiana Geographical  
 Information Office Library  
 Orthophotography -  
 Obtained from Indiana Map  
 Framework Data ([www.indianamap.org](http://www.indianamap.org))

Des. 1800067 (Lead)

Date: 12/16/2021

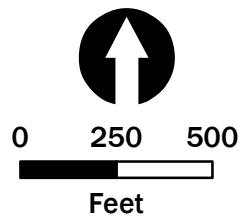


**PARSONS**

Created by: KDV



 Project Area



**SR 912 Roadway and Ramp Project**  
**Lake County, Indiana**  
**2018 Aerial Imagery**  
**Sheet 1 of 4**

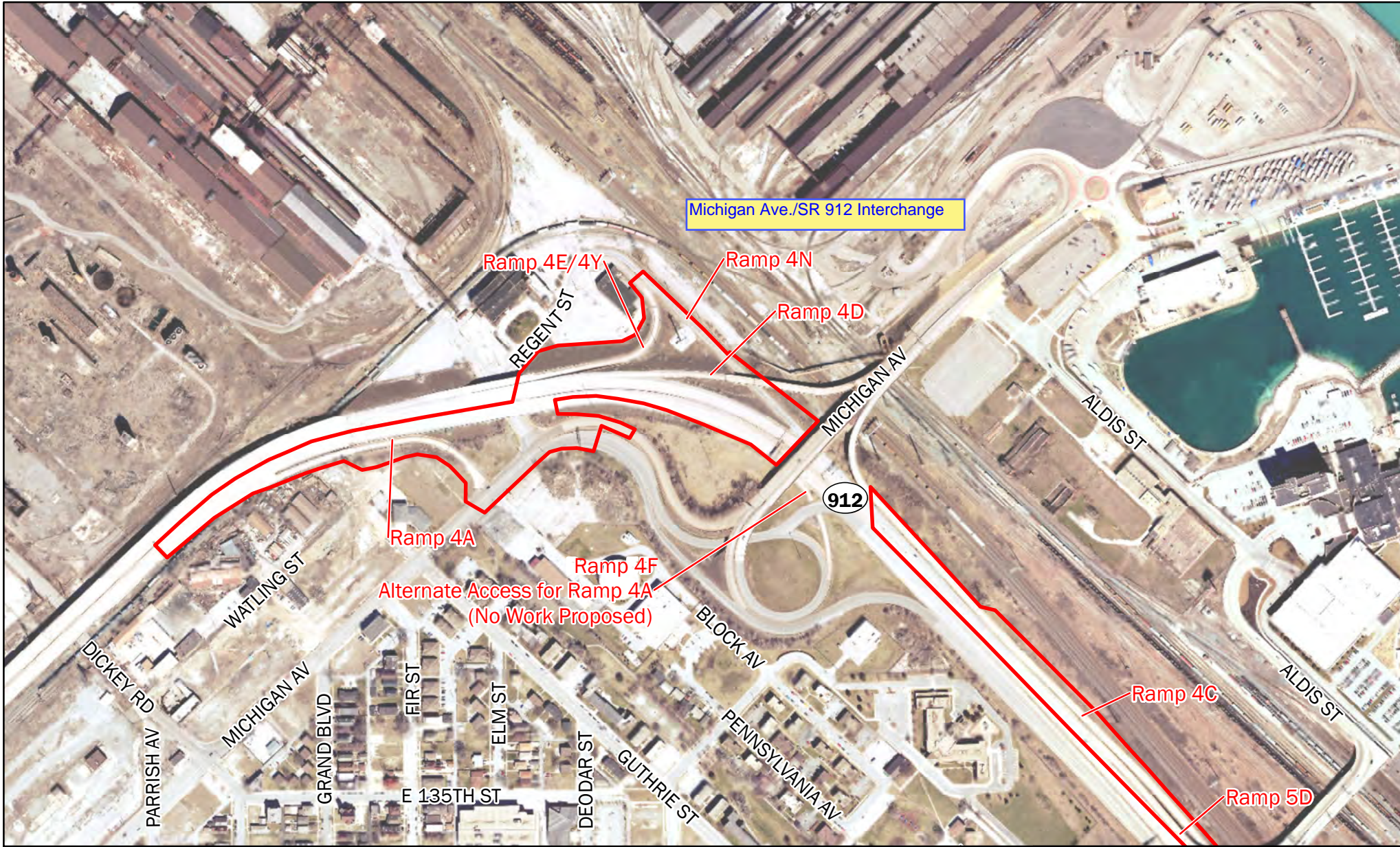
Sources:  
 Non Orthophotography Data -  
 Obtained from the State of Indiana Geographical  
 Information Office Library  
 Orthophotography -  
 Obtained from Indiana Map  
 Framework Data ([www.indianamap.org](http://www.indianamap.org))

Des. 1800067 (Lead)

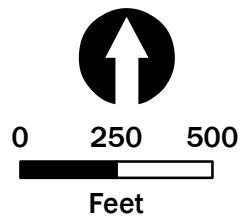
Date: 4/11/2022



**PARSONS**



 Project Area



**SR 912 Roadway and Ramp Project**  
**Lake County, Indiana**  
**2018 Aerial Imagery**  
**Sheet 2 of 4**

Sources:  
 Non Orthophotography Data -  
 Obtained from the State of Indiana Geographical  
 Information Office Library  
 Orthophotography -  
 Obtained from Indiana Map  
 Framework Data ([www.indianamap.org](http://www.indianamap.org))

Des. 1800067 (Lead)

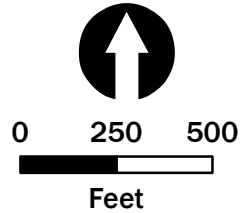
Date: 4/11/2022



**PARSONS**



 Project Area



**SR 912 Roadway and Ramp Project**  
**Lake County, Indiana**  
**2018 Aerial Imagery**  
**Sheet 3 of 4**

Sources:  
 Non Orthophotography Data -  
 Obtained from the State of Indiana Geographical  
 Information Office Library  
 Orthophotography -  
 Obtained from Indiana Map  
 Framework Data ([www.indianamap.org](http://www.indianamap.org))

Des. 1800067 (Lead)

Date: 4/11/2022

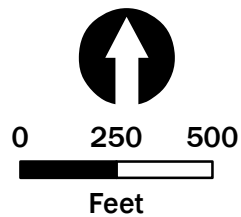


**PARSONS**

Created by: KDV



 Project Area



**SR 912 Roadway and Ramp Project**  
**Lake County, Indiana**  
**2018 Aerial Imagery**  
**Sheet 4 of 4**

Sources:  
 Non Orthophotography Data -  
 Obtained from the State of Indiana Geographical  
 Information Office Library  
 Orthophotography -  
 Obtained from Indiana Map  
 Framework Data ([www.indianamap.org](http://www.indianamap.org))

Des. 1800067 (Lead)

Date: 4/11/2022



**PARSONS**





**Photo 1** - View of the roadside along westbound SR 912 facing west (10/5/2021).



**Photo 2** - View of the roadside along westbound SR 912 facing west (10/5/2021).



**Photo 3** - View of the roadside along SR 912 and the 4A exit ramp to Michigan Avenue facing west (7/15/2021).



**Photo 4** - View of the roadside along SR 912 and the 4A exit ramp to Michigan Avenue facing southeast (7/15/2021).



**Photo 5** - View of westbound SR 912 facing northwest (10/5/2021).



**Photo 6** - View of westbound SR 912 facing southeast (10/5/2021).



**Photo 7** - View of the eastbound SR 912 exit ramp to Industrial Highway facing south (10/5/2021).



**Photo 8** - View of the eastbound SR 912 exit ramp to Industrial Highway facing south (10/5/2021).