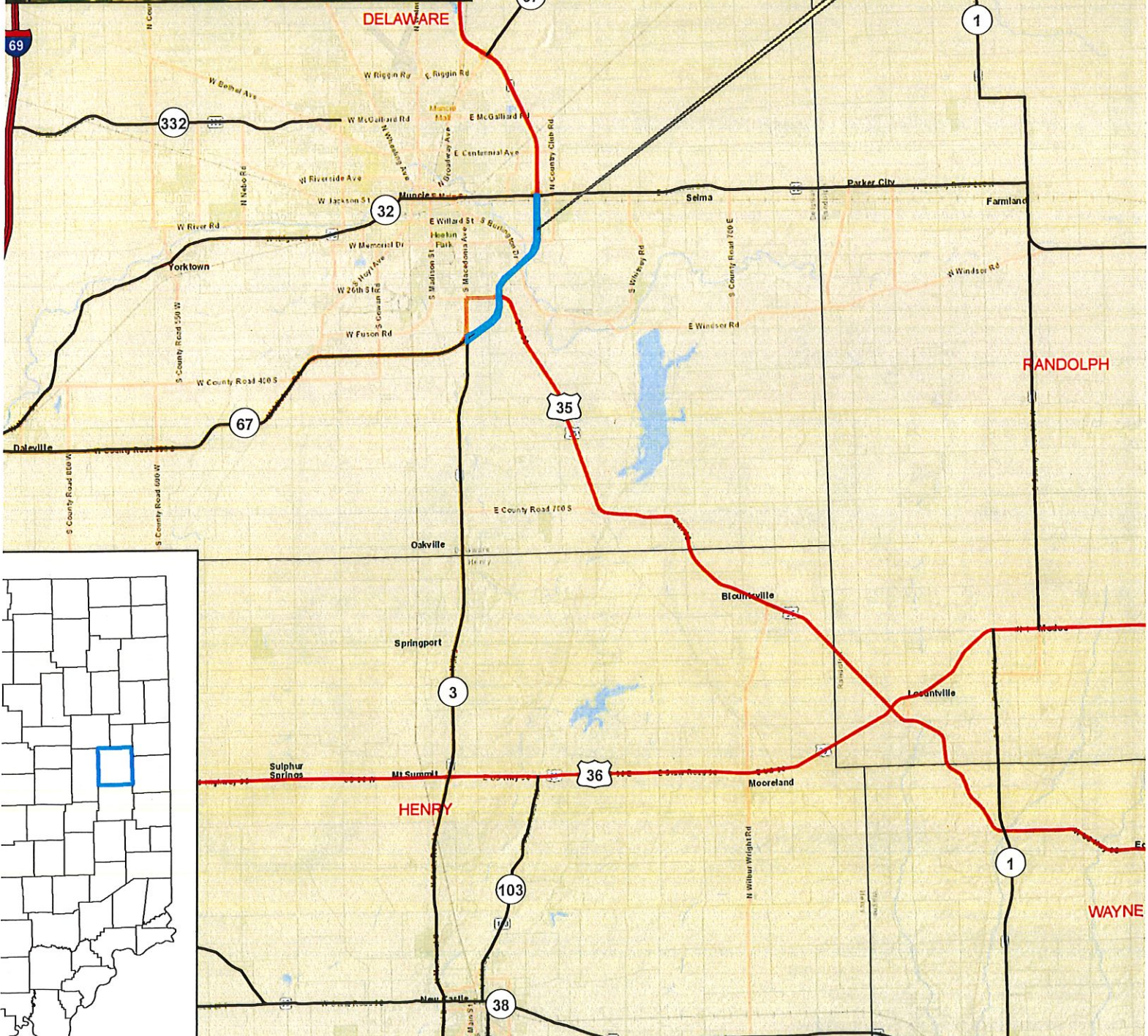


Source: Esri, DigitalGlobe, GeoEye, Earthstar Geographics, CNES/Airbus DS, USDA, USGS, AeroGRID, IGN, and the GIS User Community



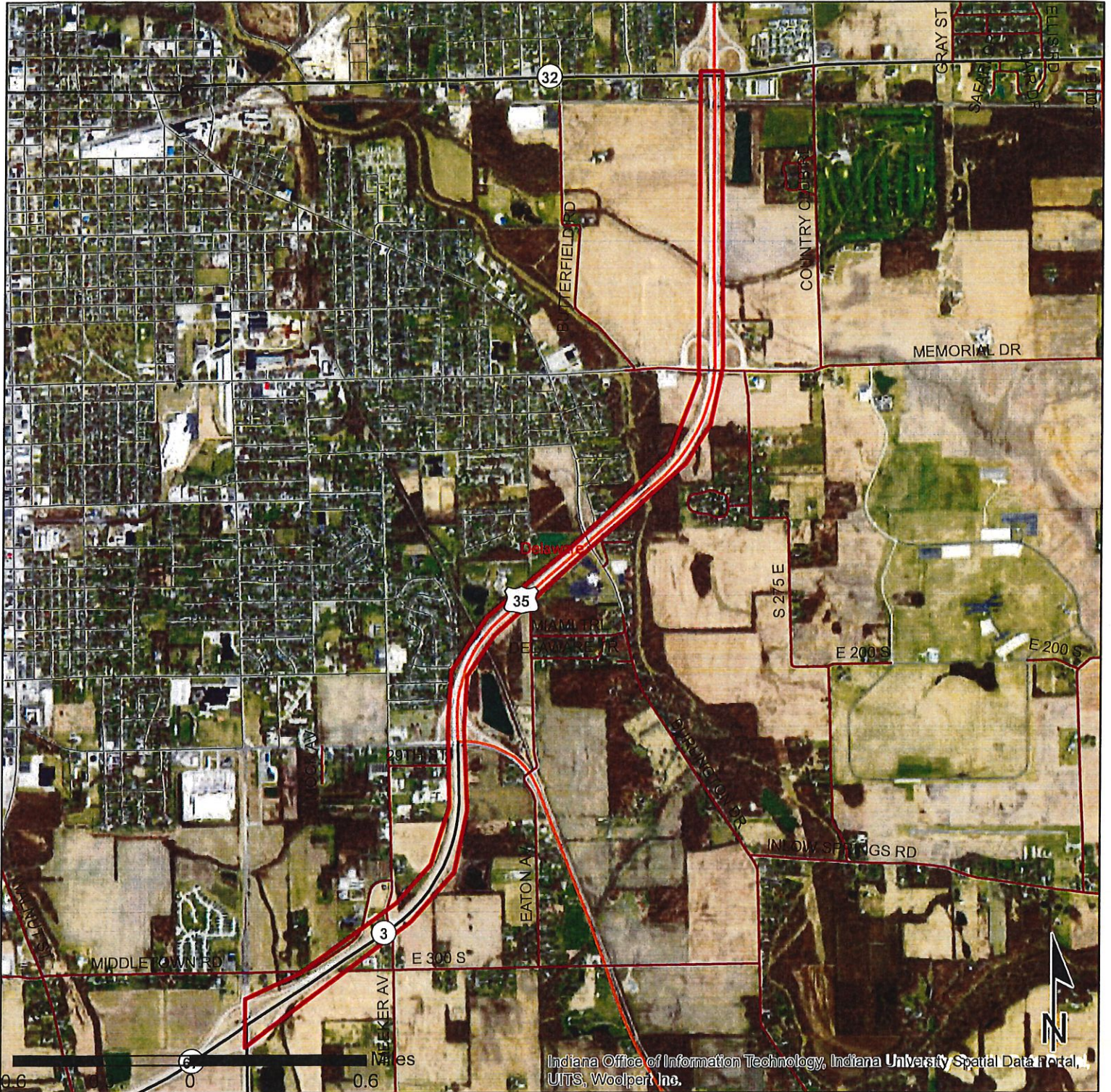
Sources: Esri, HERE, Garmin, USGS, Intermap, INCREMENTAL, NRCAN, Esri Japan

2017 Aerial Photograph

SR 3/SR 67/US 35, From SR 3 to SR 32

Des. No. 1801461, New Cable Barrier Project

Delaware County, Indiana



Scale 1:30,000

Sources: Non Orthophotography
 Data - Obtained from the State of Indiana Geographical Information Office Library
Orthophotography - Obtained from Indiana Map Framework Data (www.indianamap.org)
 Map Projection: UTM Zone 16 N Map Datum: NAD83

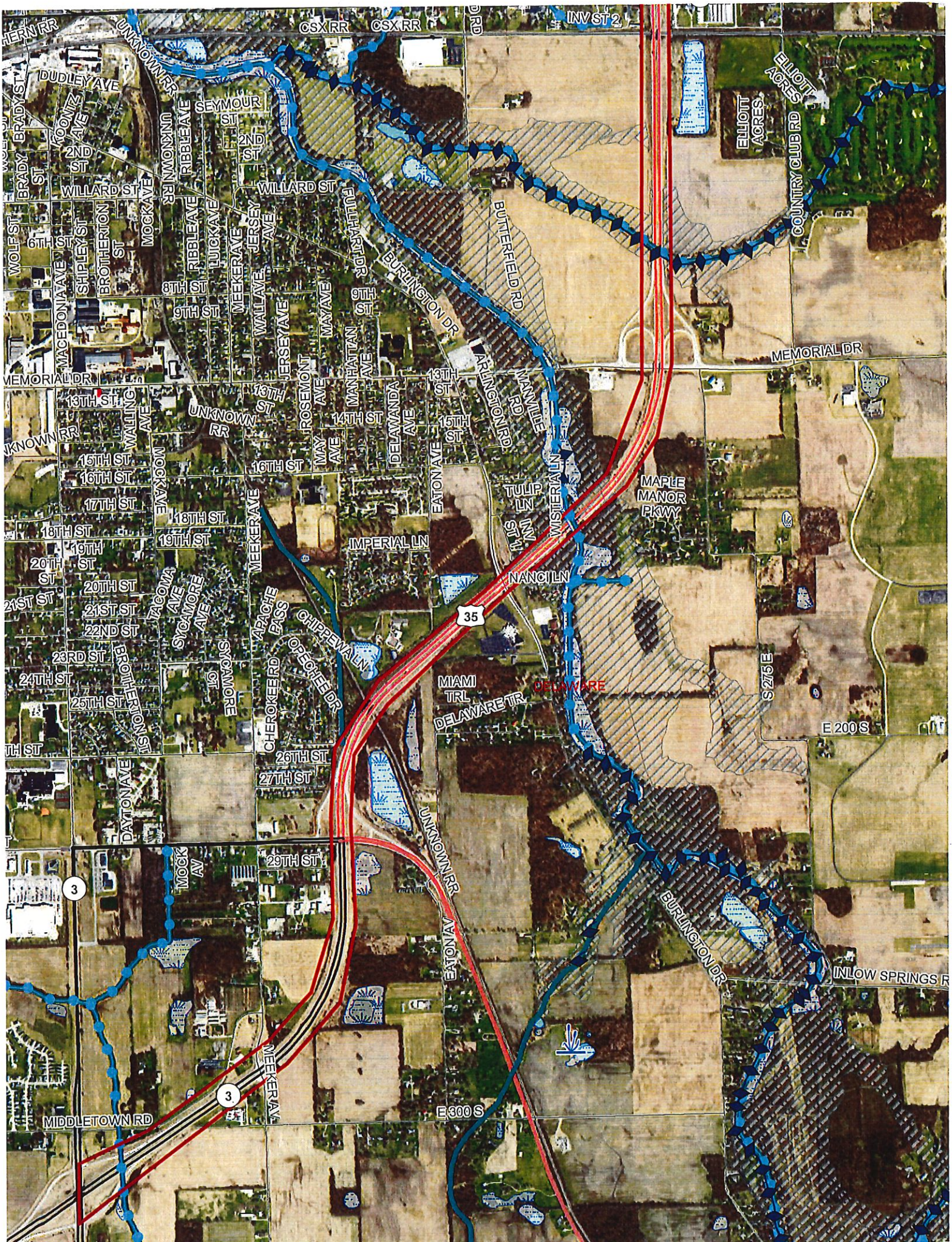
This map is intended to serve as an aid in graphic representation only. This information is not warranted for accuracy or other purposes.

CE-1, Des# 1801461

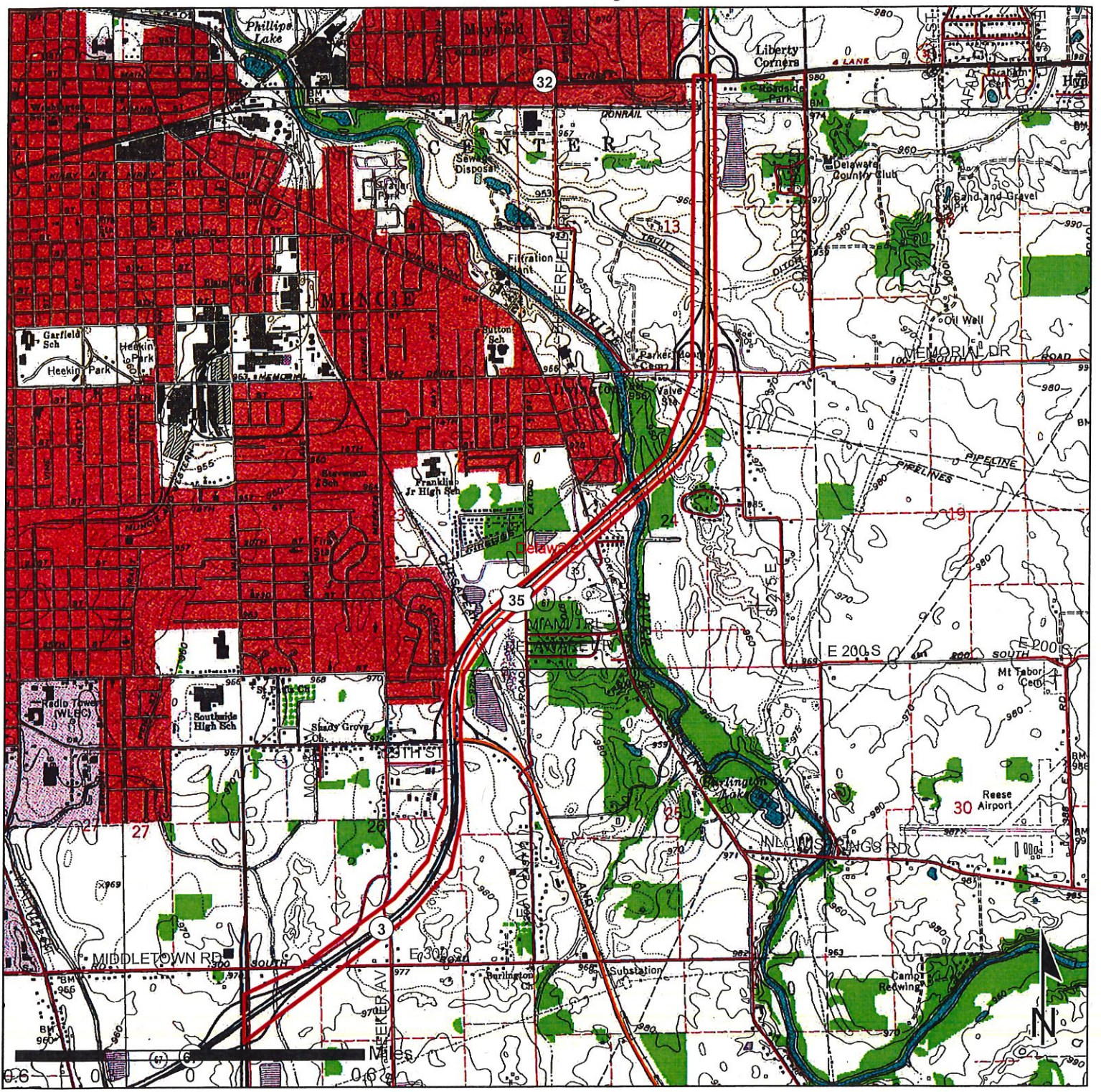
Appendix B

Legend

- Interstates
- State Routes
- US Routes



USGS 7.5' Muncie East, Indiana Topographic Quadrangle SR 3/SR 67/US 35, From SR 3 to SR 32 Des. No. 1801461, New Cable Barrier Project Delaware County, Indiana



Scale 1:30,000

Sources: Non Orthophotography
 Data - Obtained from the State of Indiana Geographical Information Office Library
Orthophotography - Obtained from Indiana Map Framework Data (www.indianamap.org)
 Map Projection: UTM Zone 16 N Map Datum: NAD83

This map is intended to serve as an aid in graphic representation only. This information is not warranted for accuracy or other purposes.

Legend

- Interstates
- State Routes
- US Routes