

"Let us remember that, as much has been given us, much will be expected from us, and that true homage comes from the heart as well as from the lips, and shows itself in deeds."
- Theodore Roosevelt

Riverwatch News: Greetings Riverwatchers!

Hard to believe, but this is our last newsletter of 2013. As such, I would like to take this time to reflect on the past year and express my gratitude to all of you. I have said it before, but this program would not exist without your hard work and dedication. I continue to be amazed by your level of passion and commitment to clean water, which makes my job easier.

This has definitely been a year of transition, but I have confidence that most of the kinks have been worked out and we have found a good home at IDEM and the Watershed Assessment and Planning Branch. We will continue to look at the program and find ways to better integrate Riverwatch into watershed efforts happening throughout the state. One of these efforts is the External Data Framework. Read the article on this new initiative and think about how you or your group may be involved.

I also want to give a shout out to each of you who completed the survey regarding the database. As a state program relying on federal funds, we don't always get to do the things we want to do. However, our hope is to stay current with technology and continue to meet your needs with how you enter and search data. I realize it isn't always perfect, but I believe we have a pretty good system. With that said, I want to address a few things. Several of you commented on finding sites monitored using DataWatch. (Continued on page 7)

November /December 2013

In this Issue:

- OWQ External Data Framework
- InWMC Symposium
- Foam in Streams?
- Asian Carp
- IndianaMAP.org
- Water Calculators

Riverwatch Events:

*Watershed
Leadership
Academy Fee due
by December 13*

Hoosier
Riverwatch is
sponsored by





Introducing the Office of Water Quality External Data Framework

Indiana Department of Environmental Management's (IDEM) Office of Water Quality (OWQ) recognizes that numerous universities, municipalities, watershed and other grassroots organizations and individual citizens throughout the state participate in valuable water monitoring activities at various scales. OWQ is currently developing the External Data Framework (EDF) to provide a voluntary process for organizations to submit water quality data to inform OWQ programs and decisions.

The EDF will encourage participation from all external organizations involved in water monitoring activities. Participating organizations will benefit from technical assistance and data quality review from OWQ Data Quality Assurance Officers. Additionally, submitting data through EDF allows participating organizations' data to be uploaded to STORET, U.S. EPA's national water quality database. We look forward collaborating with external organizations on sampling and analysis strategies to help meet our shared goals of improving and protecting Indiana's water resources. Look for data solicitation and technical assistance resources in 2014.

For more information and inquiries, e-mail Laura Barnhart, External Data Coordinator at WaterQualityEDF@idem.IN.gov.



Indiana Water Monitoring Council Symposium

The Indiana Water Monitoring Council (InWMC) will be hosting its fall symposium entitled *Indiana Energy and Water*.

When:

Date: Thursday, November 21, 2013

Time: 9:00 a.m - 3:00 p.m.

Where:

Indiana Government Center South, Conference Rooms B&C
(302 W. Washington St. Indianapolis, IN 46204)

Details:

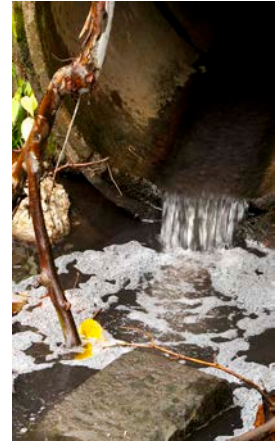
There are no fees to attend the symposium. Please register by Friday, November 15. Visit: www.inwmc.org/ for a detailed agenda and to register for the event.

Foam in Streams?

In the Fall 2011 Conservation Currents newsletter, the Northern Virginia Soil and Water Conservation District provides some hints on how to tell if those suds in your stream are natural or come from man-made sources. Foam, suds, or bubbles can be natural; when plants and animals decompose, they release fatty acids that can break down the surface tension of water, allowing air bubbles to form on the surface when air is mixed with moving water. Weather factors such as temperature and rain can contribute to the buildup of natural foam. Man-made sources of stream suds include over-fertilized lawns, car wash runoff, sanitary sewer or septic field failure, and some industrial discharges.

Hints your suds are natural: the foam is light tan, brown, or white; it has an earthy, fishy, or "fresh cut grass" odor; it occurs at many different places along the stream and can cover large areas; and it increases after rain storms. Hints that it's time to report a problem: the foam is white and either perfumed, like detergent, or has a foul sewer odor; it accumulates near the source of the discharge but dissipates quickly; and it is not related to rain storms.

Source: Northern Virginia Soil and Water Conservation District Conservation Currents, Volume 39, issue 1.



Asian Carp

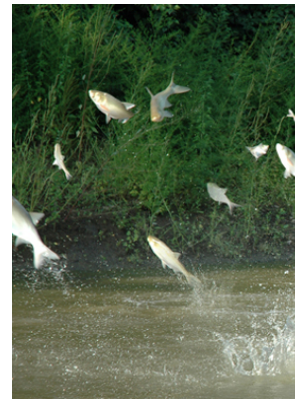
The Michigan DNR Fisheries Division in collaboration with the AIS core team and Michigan-out-of-doors TV has developed and produced an education and outreach video that focuses on identification of juvenile Asian carp. The overall message of the video is to increase awareness of a potential pathway for the introduction of these detrimental invasive species that the common angler can relate with. The filming and editing of the juvenile Asian carp identification video has been completed. Please feel free to distribute the video to anyone that may be interested in the content. The video has been posted to the Michigan DNR's Asian carp webpage. You can find it on there under the videos section.

The link below will take you to the video on Youtube:

www.youtube.com/watch?v=tekJq3L0gPA&feature=youtu.be

To find out more information about Asian Carp in Indiana, visit:

www.IN.gov/dnr/fishwild/3628.htm





Community Job Opportunities

I usually don't post job information, however these have come across my desk in the past few days and thought they may be relevant.

The Orange County SWCD is looking for a Lost River Watershed Coordinator for more details go to [LR Watershed Coordinator Job Announcement 10-22-2013.pdf](#) . They are hoping to fill this position as soon as possible so please forward the information to anyone you know who may be interested.

Earth Force is currently hiring to fill the positions for Director of Center for Teaching Learning and for the Director of Center for Uncommon Collaborative.

Earth Force is a not for profit dedicated to networking community partners, training local groups, and providing curriculum resources to run service-learning and civic action programs in their community.

To view the job descriptions, visit: www.earthforce.org/jobs .



Water Calculators

The Alliance for Water Efficiency has released an updated version of its Home Water Works Household Water Calculator featuring key enhancements that will help more consumers across North America save water. This calculator is a powerful tool that estimates where water is used in the home and provides a personalized plan to save water and energy.

Visit: www.home-water-works.org/calculator for more information.

Stormwater Calculator

U.S. EPA's National Stormwater Calculator is a desktop application that estimates the annual amount of rainwater and frequency of runoff from a specific site anywhere in the United States (including Puerto Rico). Estimates are based on local soil conditions, land cover, and historic rainfall records.

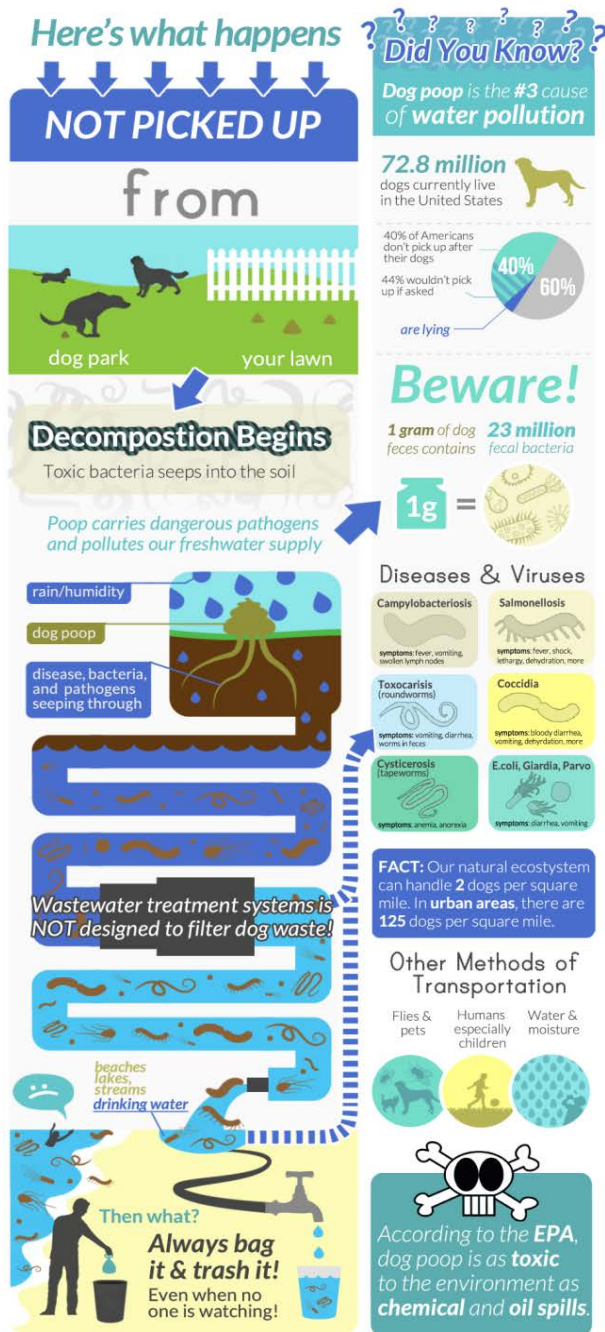
It is designed to be used by anyone interested in reducing runoff from any property, including:

- site developers,
- landscape architects,
- urban planners; and,
- homeowners.

Visit: www.epa.gov/nrmrl/wswrd/wq/models/swc/ for more information.

Ever leave pet waste behind?

In your yard, on the trail, out of sight?



Never forget a bag again.

PoopBuddy aims to inspire responsibility among dog owners by introducing fun to an otherwise stinky task. Learn more at poopbuddy.com.



SOURCES: GreenvilleCounty.org, National Resources Defense Council, Alamo Area, Partners for Animal Welfare, Keep It Clean Partnership, Environmental Protection Agency, Cable News Network

The Dangers of Unscooped Pet Waste

September 27, 2013 by *Tails Magazine*

You know it's important to always pick up your dog's poop, but do you really know why? Unscooped pet waste is a community issue, affecting the environment and the living things in it. According to the U.S. EPA, two or three days worth of droppings from a population of about 100 dogs can contribute enough bacteria to temporarily close a bay and all watershed areas within 20 miles to swimming and shell fishing.

For more information, look to the left at this handy infographic put together by the folks at PoopBuddy.



Getting In Step: Engaging Stakeholders in Your Watershed

U.S. EPA has released an update to a 2001 publication on engaging stakeholders in watershed actions. This second edition update of [Getting in Step: Engaging Stakeholders in Your Watershed](#) presents the tools watershed practitioners need to effectively engage stakeholders to restore and maintain healthy environmental conditions through community support and cooperative action. The 91 page guide (1.3M PDF) is intended primarily for federal, state, tribal, and local agency personnel involved in watershed management activities.

This publication is part of the *Getting In Step* outreach series, available within U.S. EPA's Nonpoint Source Outreach Toolbox at: <http://cfpub.epa.gov/npstbx/getinstep.html> (the updated Stakeholder guide is listed at the bottom of this page).

Here is a direct link to the PDF download:
<http://cfpub.epa.gov/npstbx/files/stakeholderguide.pdf> .



IndianaMAP.org

The State of Indiana has a great geographic, data resource on the web for everyone to use as a viewer and for download of geo-referenced dataset layers. IndianaMAP is the largest public collection of Hoosier Geographic Information System (GIS) data available. In fact, IndianaMAP.org has been honored as a **"Notable Government Document of 2012"** by the "American Library Association - Government Documents Roundtable". To get more information about this honor, click this link: www.igic.org/news/index.php?itemid=569 .

For more information and instruction on the use of this GIS database, visit: www.indianamap.org/ . You can also find the map viewer at: maps.indiana.edu/ .

Geographic Data
Resource:
maps.indiana.edu/



Indiana Department of
Environmental Management
Office of Water Quality Watershed
Assessment and Planning Branch

100 North Senate Avenue,
MC 65-40 - 2 Shadeland
Indianapolis, Indiana
46204-2251

PHONE:
(317) 308-3392

E-MAIL:
Riverwatch@idem.IN.gov



[CLICK HERE to
subscribe](#)

or go to:

www.idem.IN.gov



Greetings... (continued from the cover)

Some of you may remember when access to latitude and longitude was not easy to get. Hurray for Google Maps. Prior to 2011, we did not require lat and long information. When we upgraded the database a few years ago, we tried to format all the existing information and put those on the map. However, there are a number of sites that do not have lat and long information and although there is data associated with those sites; they will not show up on a map. If you have a site that does not show up, you can use the register site function on the database to get the lat and long and send the coordinates to me.

Do not hit submit!

Thank you all for another great year. Do not hesitate to contact me with your comments, suggestions, feedback, stories. I can't always promise to have the answer or the answer you want, but will work with you to find a solution.

Until we meet in 2014, all the best.

- Lisa

Hoosier Riverwatch Mission:

The mission of Hoosier Riverwatch is to involve the citizens of Indiana in becoming active stewards of Indiana's water resources through watershed education and clean-up activities. Hoosier Riverwatch is sponsored by the **Indiana Department of Environmental Management's Office of Water Quality.**

For more information, go to www.idem.IN.gov/riverwatch .

