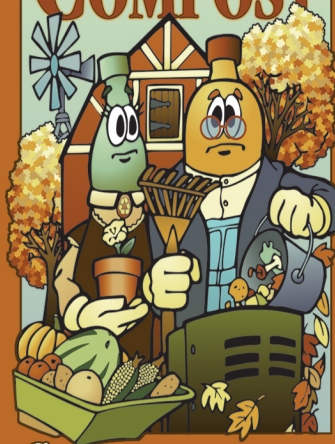


**Grandma and Grandpa
made compost down
on the farm.**

Continue the tradition.

AMERICAN COMPOST



Start composting
... in your own backyard

**INDIANA
DEPARTMENT OF
ENVIRONMENTAL
MANAGEMENT**



**For more information about
recycling in Indiana,
call 1-800-988-7901
or visit www.recycle.IN.gov.**

Printed on 50% recycled paper.

The Recycle Guys appear courtesy of the S.C. Department of Health and Environmental Control's Office of Solid Waste Reduction and Recycling.

Every day you probably toss something into the garbage that could have been reused or recycled. Before you toss it, remember the three Rs: **reduce, reuse and recycle.** Can you find another use for what you are throwing away? If not, can it be recycled? Check with your local recycling office or solid waste management district to find out what can be recycled in your community.



www.recycle.IN.gov

The Recycle Guys appear courtesy of the S.C. Department of Health and Environmental Control's Office of Solid Waste Reduction and Recycling. Printed on 50% recycled paper.