



Microcystins ELISA Summary Report

Office of Water Quality - Watershed Assessment and Planning Branch

Sample #	Location	Date Collected	Date Analyzed	Conc. (ppb)
AB29378	Fairfax SRA	5/15/2017	5/17/2017	< 0.30
AB29379	Paynetown SRA	5/15/2017	5/17/2017	< 0.30
AB29380	Starve Hollow SRA	5/15/2017	5/17/2017	< 0.30
AB29381	Deam Lake SRA	5/15/2017	5/17/2017	< 0.30
AB29382	Hardy Lake SRA	5/15/2017	5/17/2017	< 0.30
AB29383	Whitewater Memorial SP	5/16/2017	5/17/2017	< 0.30
AB29384	Quakertown SRA	5/16/2017	5/17/2017	< 0.30
AB29385	Mounds SRA	5/16/2017	5/17/2017	0.60
AB29386	Raccoon Lake SRA	5/16/2017	5/17/2017	< 0.30
AB29376	Whitewater Memorial (Field Duplicate)	5/16/2017	5/17/2017	< 0.30
AB29377	Field Blank	5/16/2017	5/17/2017	< 0.30
AB29381LD	Deam Lake (Lab Duplicate)	5/15/2017	5/17/2017	< 0.30
20170515LB	Lab Blank	5/15/2017	5/17/2017	< 0.30



Assay Calibration Report

Assay Information

Assay Name: Microcystins ADDA
Assay Mode: 4-Parameter Logistic
Normal: 0.1500 - 5.0000

Units: ng/mL
of decimals: 4
Assay Description:

Controls:
Normal Control

Standards:

Std1, Concentration = 0.0000, Minimum number to use: 2
Std2, Concentration = 0.1500, Minimum number to use: 2
Std3, Concentration = 0.4000, Minimum number to use: 2
Std4, Concentration = 1.0000, Minimum number to use: 2
Std5, Concentration = 2.0000, Minimum number to use: 2
Std6, Concentration = 5.0000, Minimum number to use: 2

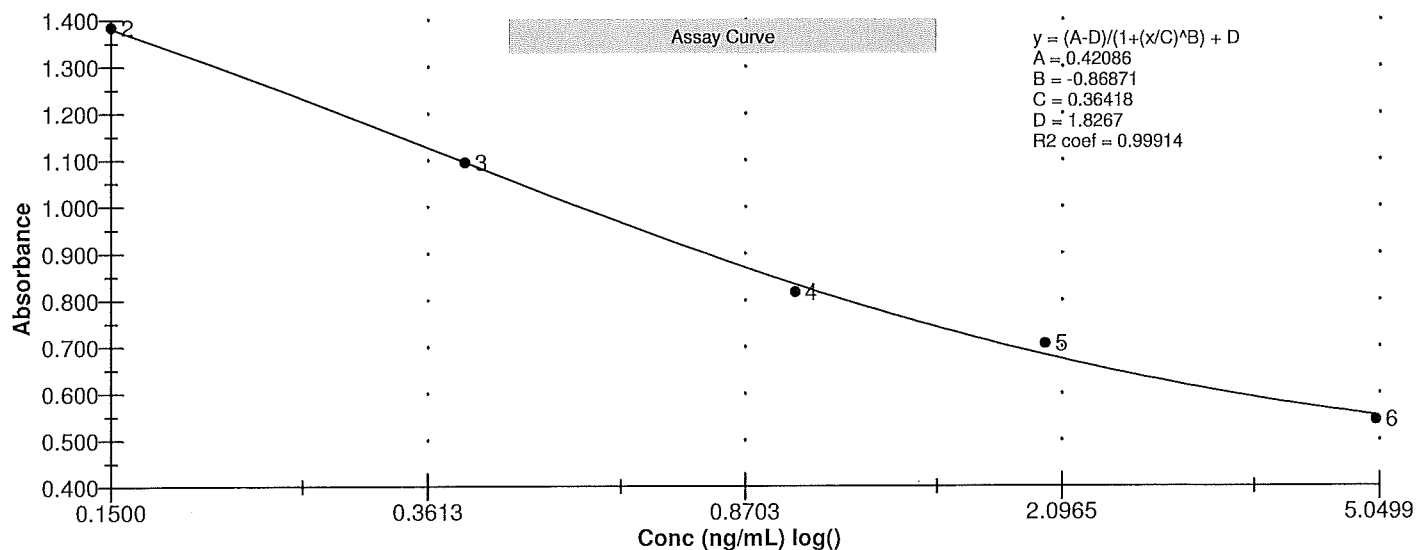
Curve valid interval: 7 days 0 hours

Axis Mode: Y = Abs, X = Log(Conc)

Assay Calibration and Statistics

Name	Absorbance	Concentration	Position
5/17/2017 2:33:13 PM			
Std1	1.856 Abs	< 0.0000 ng/mL	A01
Std1	1.797 Abs	0.0044 ng/mL	B01
Std2	1.387 Abs	0.1471 ng/mL	C01
Std2	1.384 Abs	0.1488 ng/mL	D01
Std3	1.067 Abs	0.4387 ng/mL	E01
Std3	1.123 Abs	0.3650 ng/mL	F01
Std4	0.814 Abs	1.0825 ng/mL	G01
Std4	0.821 Abs	1.0525 ng/mL	H01
Std5	0.736 Abs	1.5200 ng/mL	A02
Std5	0.677 Abs	2.0500 ng/mL	B02
Std6	0.548 Abs	> 5.0000 ng/mL	C02
Std6	0.536 Abs	> 5.0000 ng/mL	D02
5/17/2017 2:33:13 PM			
Normal Control	1.021 Abs	0.5110 ng/mL	F02
Normal Control	0.951 Abs	0.6490 ng/mL	E02

Name	Mean Abs	SD Abs	CV Abs	Mean Conc	SD Conc	CV Conc	Diff Conc
Std1	1.826	0.042	2.28				
Std2	1.385	0.002	0.15	0.148	0.001	0.81	-1.33
Std3	1.095	0.040	3.62	0.402	0.052	12.97	0.50
Std4	0.817	0.005	0.61	1.067	0.021	1.99	6.70
Std5	0.706	0.042	5.91	1.785	0.375	21.00	-10.75
Std6	0.542	0.008	1.57				-100.00
Normal Control	0.986	0.049	5.02	0.580	0.098	16.82	





Test Report

Test Information

Name/ID	Assay	Absorbance	Concentration	Interpretation	Reference	Position
5/17/2017 2:33:13 PM						
Std1	Microcystins ADDA	1.856 Abs	< 0.0000 ng/mL		0.0000	A01
Std1	Microcystins ADDA	1.797 Abs	0.0044 ng/mL		0.0000	B01
Std2	Microcystins ADDA	1.387 Abs	0.1471 ng/mL		0.1500	C01
Std2	Microcystins ADDA	1.384 Abs	0.1488 ng/mL		0.1500	D01
Std3	Microcystins ADDA	1.067 Abs	0.4387 ng/mL		0.4000	E01
Std3	Microcystins ADDA	1.123 Abs	0.3650 ng/mL		0.4000	F01
Std4	Microcystins ADDA	0.814 Abs	1.0825 ng/mL		1.0000	G01
Std4	Microcystins ADDA	0.821 Abs	1.0525 ng/mL		1.0000	H01
Std5	Microcystins ADDA	0.736 Abs	1.5200 ng/mL		2.0000	A02
Std5	Microcystins ADDA	0.677 Abs	2.0500 ng/mL		2.0000	B02
Std6	Microcystins ADDA	0.548 Abs	> 5.0000 ng/mL		5.0000	C02
Std6	Microcystins ADDA	0.536 Abs	> 5.0000 ng/mL		5.0000	D02
Normal Control	Microcystins ADDA	0.951 Abs	0.6490 ng/mL			E02
Normal Control	Microcystins ADDA	1.021 Abs	0.5110 ng/mL			F02
AB29378	Microcystins ADDA	1.799 Abs	0.0041 ng/mL	LOW	0.1500 - 5.0000	G02
AB29378	Microcystins ADDA	1.821 Abs [1.8100] {0.9 C	0.0007 ng/mL [0.0023] {100.2 C	Low [Low]	0.1500 - 5.0000	H02
AB29379	Microcystins ADDA	1.839 Abs	< 0.0000 ng/mL	Out(LR)	0.1500 - 5.0000	A03
AB29379	Microcystins ADDA	1.847 Abs [1.8430] {0.3 C	< 0.0000 ng/mL [< 0.0000]	Out(LR) [Out(LR)]	0.1500 - 5.0000	B03
AB29380	Microcystins ADDA	1.823 Abs	0.0004 ng/mL	LOW	0.1500 - 5.0000	C03
AB29380	Microcystins ADDA	1.808 Abs [1.8155] {0.6 C	0.0026 ng/mL [0.0014] {103.7 C	Low [Low]	0.1500 - 5.0000	D03
AB29381	Microcystins ADDA	1.846 Abs	< 0.0000 ng/mL	Out(LR)	0.1500 - 5.0000	E03
AB29381	Microcystins ADDA	1.923 Abs [1.8845] {2.9 C	< 0.0000 ng/mL [< 0.0000]	Out(LR) [Out(LR)]	0.1500 - 5.0000	F03
AB29382	Microcystins ADDA	1.675 Abs	0.0320 ng/mL	LOW	0.1500 - 5.0000	G03
AB29382	Microcystins ADDA	1.622 Abs [1.6485] {2.3 C	0.0475 ng/mL [0.0395] {27.6 C	Low [Low]	0.1500 - 5.0000	H03
AB29383	Microcystins ADDA	1.774 Abs	0.0087 ng/mL	LOW	0.1500 - 5.0000	A04
AB29383	Microcystins ADDA	1.691 Abs [1.7325] {3.4 C	0.0278 ng/mL [0.0176] {74.0 C	Low [Low]	0.1500 - 5.0000	B04
AB29384	Microcystins ADDA	1.752 Abs	0.0132 ng/mL	LOW	0.1500 - 5.0000	C04
AB29384	Microcystins ADDA	1.627 Abs [1.6895] {5.2 C	0.0459 ng/mL [0.0281] {78.2 C	Low [Low]	0.1500 - 5.0000	D04
AB29385	Microcystins ADDA	0.935 Abs	0.6865 ng/mL		0.1500 - 5.0000	E04
AB29385	Microcystins ADDA	1.008 Abs [0.9715] {5.3 C	0.5340 ng/mL [0.6045] {17.7 C		0.1500 - 5.0000	F04
AB29386	Microcystins ADDA	1.489 Abs	0.0967 ng/mL	LOW	0.1500 - 5.0000	G04
AB29386	Microcystins ADDA	1.704 Abs [1.5965] {9.5 C	0.0244 ng/mL [0.0558] {84.4 C	Low [Low]	0.1500 - 5.0000	H04
AB29376	Microcystins ADDA	1.771 Abs	0.0093 ng/mL	LOW	0.1500 - 5.0000	A05
AB29376	Microcystins ADDA	1.839 Abs [1.8050] {2.7 C	< 0.0000 ng/mL [0.0031]	Out(LR) [Low]	0.1500 - 5.0000	B05
AB29377	Microcystins ADDA	1.743 Abs	0.0152 ng/mL	LOW	0.1500 - 5.0000	C05
AB29377	Microcystins ADDA	1.803 Abs [1.7730] {2.4 C	0.0034 ng/mL [0.0089] {89.7 C	Low [Low]	0.1500 - 5.0000	D05
AB29381LD	Microcystins ADDA	1.792 Abs	0.0053 ng/mL	LOW	0.1500 - 5.0000	E05
AB29381LD	Microcystins ADDA	1.738 Abs [1.7650] {2.2 C	0.0163 ng/mL [0.0105] {72.0 C	Low [Low]	0.1500 - 5.0000	F05
20170515LB	Microcystins ADDA	1.820 Abs	0.0008 ng/mL	LOW	0.1500 - 5.0000	G05
20170515LB	Microcystins ADDA	1.871 Abs [1.8455] {2.0 C	< 0.0000 ng/mL [< 0.0000]	Out(LR) [Out(LR)]	0.1500 - 5.0000	H05

The data in this report is preliminary without a quality control report. This data is not warranted for accuracy or other purposes.

Laboratory Analyst Signature

5/18/17
Date