



Microcystins ELISA Summary Report

Office of Water Quality - Watershed Assessment and Planning Branch

Sample #	Location	Date Collected	Date Analyzed	Conc. (ppb)
AB26294	Potato Creek SP	7/18/2016	7/20/2016	0.61
AB26295	Chain O' Lakes SP	7/18/2016	7/20/2016	< 0.150
AB26295LD	Chain O' Lakes (Lab Duplicate)	7/18/2016	7/20/2016	< 0.150
AB26292	Potato Creek SP (Field Duplicate)	7/18/2016	7/20/2016	0.46
AB26293	Field Blank	7/18/2016	7/20/2016	< 0.150
20160718LB	Lab Blank	7/18/2016	7/20/2016	< 0.150



Assay Calibration Report

Assay Information

Assay Name: Microcystins ADDA
Assay Mode: 4-Parameter Logistic
Normal: 0.1500 - 5.0000
Units: ng/mL
of decimals: 4
Assay Description:

Controls:

Normal Control

Standards:

Std1, Concentration = 0.0000, Minimum number to use: 2
Std2, Concentration = 0.1500, Minimum number to use: 2
Std3, Concentration = 0.4000, Minimum number to use: 2
Std4, Concentration = 1.0000, Minimum number to use: 2
Std5, Concentration = 2.0000, Minimum number to use: 2
Std6, Concentration = 5.0000, Minimum number to use: 2

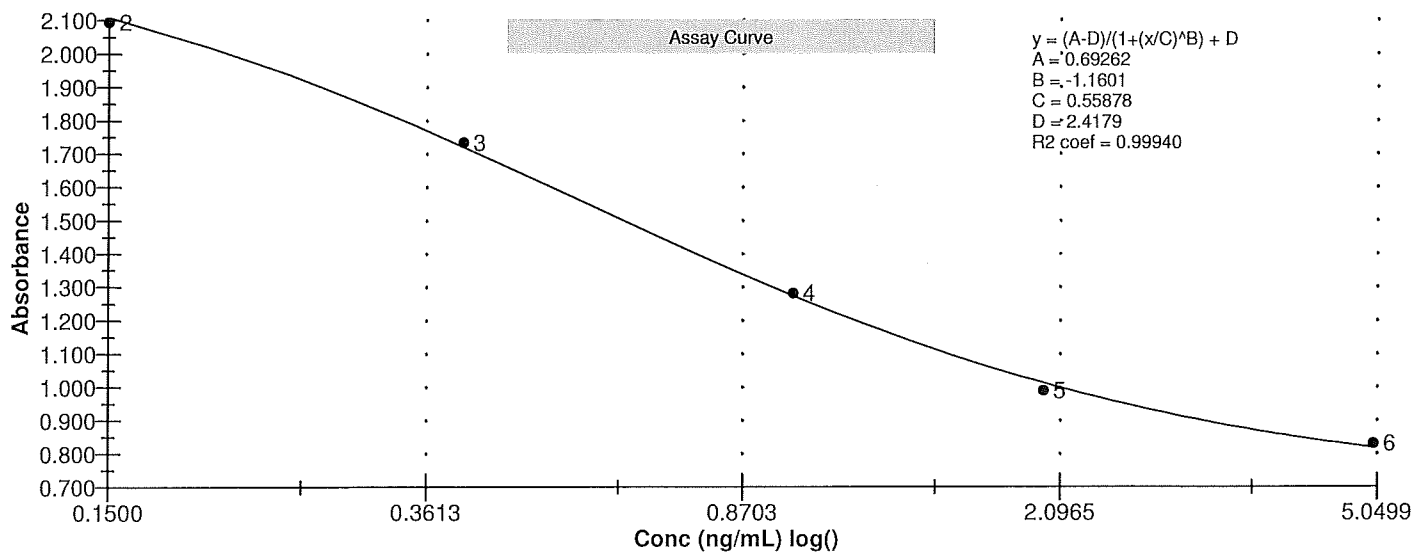
Curve valid interval: 7 days 0 hours

Axis Mode: Y = Abs, X = Log(Conc)

Assay Calibration and Statistics

Name	Absorbance	Concentration	Position
7/20/2016 11:36:14 AM			
Std1	2.380 Abs	0.0212 ng/mL	A01
Std1	2.466 Abs	< 0.0000 ng/mL	B01
Std2	2.133 Abs	0.1382 ng/mL	C01
Std2	2.056 Abs	0.1781 ng/mL	D01
Std3	1.704 Abs	0.4138 ng/mL	E01
Std3	1.765 Abs	0.3643 ng/mL	F01
Std4	1.238 Abs	1.0870 ng/mL	G01
Std4	1.326 Abs	0.8935 ng/mL	H01
Std5	0.960 Abs	2.4115 ng/mL	A02
Std5	1.018 Abs	1.9650 ng/mL	B02
Std6	0.844 Abs	4.2050 ng/mL	C02
Std6	0.817 Abs	> 5.0000 ng/mL	D02
7/20/2016 11:36:14 AM			
Normal Control	1.522 Abs	0.5972 ng/mL	F02
Normal Control	1.435 Abs	0.7116 ng/mL	E02

Name	Mean Abs	SD Abs	CV Abs	Mean Conc	SD Conc	CV Conc	Diff Conc
Std1	2.423	0.061	2.51				
Std2	2.095	0.054	2.60	0.158	0.028	17.84	5.33
Std3	1.734	0.043	2.49	0.389	0.035	9.00	-2.75
Std4	1.282	0.062	4.85	0.990	0.137	13.82	-1.00
Std5	0.989	0.041	4.15	2.188	0.316	14.43	9.40
Std6	0.831	0.019	2.30				-100.00
Normal Control	1.478	0.062	4.16	0.654	0.081	12.36	





Test Report

Test Information

Name/ID	Assay	Absorbance	Concentration	Interpretation	Reference	Position
7/20/2016 11:36:14 AM						
Std1	Microcystins ADDA	2.380 Abs	0.0212 ng/mL		0.0000	A01
Std1	Microcystins ADDA	2.466 Abs	< 0.0000 ng/mL		0.0000	B01
Std2	Microcystins ADDA	2.133 Abs	0.1382 ng/mL		0.1500	C01
Std2	Microcystins ADDA	2.056 Abs	0.1781 ng/mL		0.1500	D01
Std3	Microcystins ADDA	1.704 Abs	0.4138 ng/mL		0.4000	E01
Std3	Microcystins ADDA	1.765 Abs	0.3643 ng/mL		0.4000	F01
Std4	Microcystins ADDA	1.238 Abs	1.0870 ng/mL		1.0000	G01
Std4	Microcystins ADDA	1.326 Abs	0.8935 ng/mL		1.0000	H01
Std5	Microcystins ADDA	0.960 Abs	2.4115 ng/mL		2.0000	A02
Std5	Microcystins ADDA	1.018 Abs	1.9650 ng/mL		2.0000	B02
Std6	Microcystins ADDA	0.844 Abs	4.2050 ng/mL		5.0000	C02
Std6	Microcystins ADDA	0.817 Abs	> 5.0000 ng/mL		5.0000	D02
Normal Control	Microcystins ADDA	1.435 Abs	0.7116 ng/mL			E02
Normal Control	Microcystins ADDA	1.522 Abs	0.5972 ng/mL			F02
AB26292	Microcystins ADDA	1.622 Abs	0.4888 ng/mL		0.1500 - 5.0000	G02
AB26292	Microcystins ADDA	1.692 Abs [1.6570] {3.0 C	0.4241 ng/mL [0.4555] {10.0 C		0.1500 - 5.0000	H02
AB26293	Microcystins ADDA	2.494 Abs	< 0.0000 ng/mL	Out(LR)	0.1500 - 5.0000	A03
AB26293	Microcystins ADDA	2.468 Abs [2.4810] {0.7 C	< 0.0000 ng/mL [< 0.0000]	Out(LR) [Out(LR)]	0.1500 - 5.0000	B03
AB26294	Microcystins ADDA	1.535 Abs	0.5820 ng/mL		0.1500 - 5.0000	C03
AB26294	Microcystins ADDA	1.487 Abs [1.5110] {2.2 C	0.6406 ng/mL [0.6105] {6.8 CV		0.1500 - 5.0000	D03
AB26295	Microcystins ADDA	2.297 Abs	0.0602 ng/mL	LOW	0.1500 - 5.0000	E03
AB26295	Microcystins ADDA	2.329 Abs [2.3130] {1.0 C	0.0454 ng/mL [0.0527] {19.8 C	Low [Low]	0.1500 - 5.0000	F03
AB26295LD	Microcystins ADDA	2.454 Abs	< 0.0000 ng/mL	Out(LR)	0.1500 - 5.0000	G03
AB26295LD	Microcystins ADDA	2.428 Abs [2.4410] {0.8 C	< 0.0000 ng/mL [< 0.0000]	Out(LR) [Out(LR)]	0.1500 - 5.0000	H03
20160718LB	Microcystins ADDA	2.478 Abs	< 0.0000 ng/mL	Out(LR)	0.1500 - 5.0000	A04
20160718LB	Microcystins ADDA	2.536 Abs [2.5070] {1.6 C	< 0.0000 ng/mL [< 0.0000]	Out(LR) [Out(LR)]	0.1500 - 5.0000	B04
AB26292(3X)	Microcystins ADDA	2.233 Abs	0.0899 ng/mL	LOW	0.1500 - 5.0000	C04
AB26292(3X)	Microcystins ADDA	2.258 Abs [2.2455] {0.8 C	0.0782 ng/mL [0.0840] {9.8 CV	Low [Low]	0.1500 - 5.0000	D04
AB26294(3X)	Microcystins ADDA	2.313 Abs	0.0527 ng/mL	LOW	0.1500 - 5.0000	E04
AB26294(3X)	Microcystins ADDA	2.279 Abs [2.2960] {1.0 C	0.0685 ng/mL [0.0606] {18.4 C	Low [Low]	0.1500 - 5.0000	F04

The data in this report is preliminary without a quality control report. This data is not warranted for accuracy or other purposes.

Laboratory Analyst Signature

Date