



Microcystins ELISA Summary Report

Office of Water Quality - Watershed Assessment and Planning Branch

Sample #	Location	Date Collected	Date Analyzed	Conc. (ppb)
AB18766	Field Blank	8/18/2014	8/20/2014	<0.150
AB18767	Raccoon Lake SRA	8/18/2014	8/20/2014	<0.150
AB18768	Fairfax SRA	8/18/2014	8/20/2014	<0.150
AB18769	Paynetown SRA	8/18/2014	8/20/2014	<0.150
AB18775	Monroe Lake Intake	8/18/2014	8/20/2014	<0.150
AB18767LD	Raccoon Lake SRA (Lab Duplicate)	8/18/2014	8/20/2014	0.223
20140818LB	Lab Blank	8/18/2014	8/20/2014	<0.150
AB18770	Hardy Lake SRA	8/19/2014	8/20/2014	0.259
AB18771	Mounds SRA	8/19/2014	8/20/2014	0.774
AB18772	Quakertown SRA	8/19/2014	8/20/2014	0.276
AB18773	Whitewater Memorial SP	8/19/2014	8/20/2014	0.696
AB18765	Quakertown SRA (Field Duplicate)	8/19/2014	8/20/2014	0.254



Assay Calibration Report

Assay Information

Assay Name: Microcystins ADDA
Assay Mode: 4-Parameter Logistic
Normal: 0.1500 - 5.0000

Units: ng/mL
of decimals: 4
Assay Description:

Controls:

Normal Control

Standards:

Std1, Concentration = 0.0000, Minimum number to use: 2

Std2, Concentration = 0.1500, Minimum number to use: 2

Std3, Concentration = 0.4000, Minimum number to use: 2

Std4, Concentration = 1.0000, Minimum number to use: 2

Std5, Concentration = 2.0000, Minimum number to use: 2

Std6, Concentration = 5.0000, Minimum number to use: 2

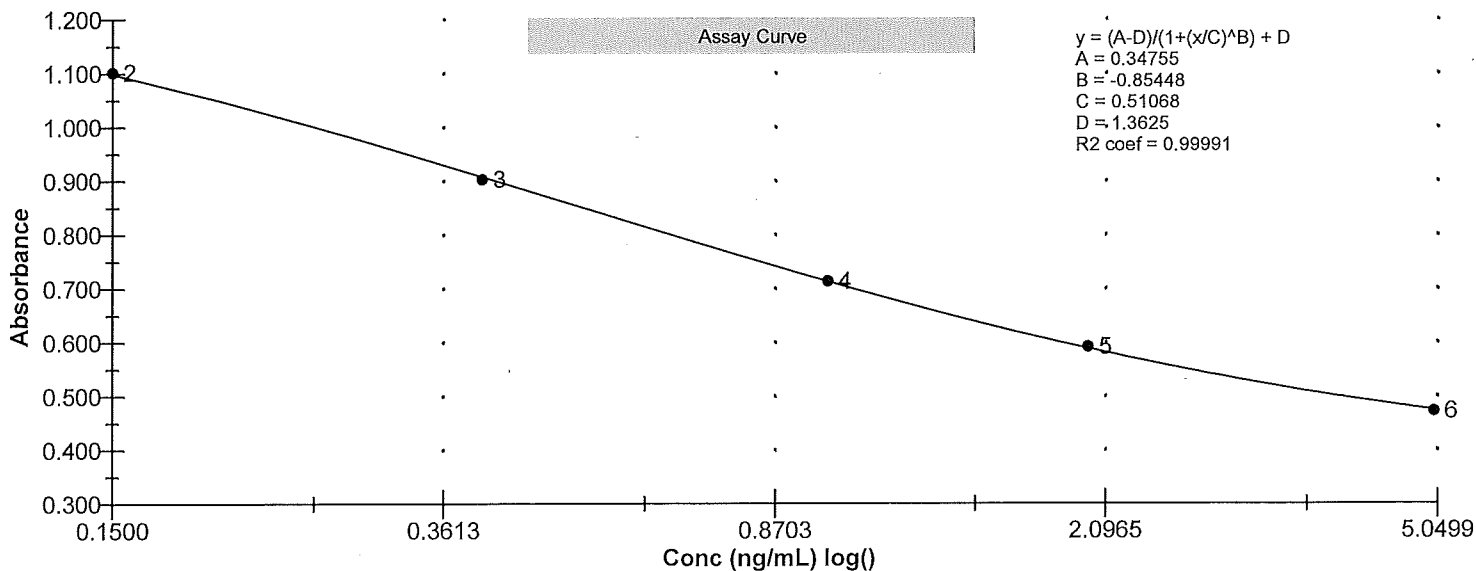
Curve valid interval: 7 days 0 hours

Axis Mode: Y = Abs, X = Log(Conc)

Assay Calibration and Statistics

Name	Absorbance	Concentration	Position
8/20/2014 10:53:50 AM			
Std1	1.350 Abs	0.0031 ng/mL	A01
Std1	1.375 Abs	< 0.0000 ng/mL	B01
Std2	1.100 Abs	0.1490 ng/mL	C01
Std2	1.103 Abs	0.1462 ng/mL	D01
Std3	0.896 Abs	0.4225 ng/mL	E01
Std3	0.910 Abs	0.3960 ng/mL	F01
Std4	0.714 Abs	0.9965 ng/mL	G01
Std4	0.715 Abs	0.9915 ng/mL	H01
Std5	0.587 Abs	2.0200 ng/mL	A02
Std5	0.597 Abs	1.8980 ng/mL	B02
Std6	0.470 Abs	> 5.0000 ng/mL	C02
Std6	0.474 Abs	> 5.0000 ng/mL	D02
8/20/2014 10:53:50 AM			
Normal Control	0.785 Abs	0.7070 ng/mL	F02
Normal Control	0.791 Abs	0.6875 ng/mL	E02

Name	Mean Abs	SD Abs	CV Abs	Mean Conc	SD Conc	CV Conc	Diff Conc
Std1	1.362	0.018	1.30				
Std2	1.102	0.002	0.19	0.148	0.002	1.34	-1.33
Std3	0.903	0.010	1.10	0.409	0.019	4.58	2.25
Std4	0.714	0.001	0.10	0.994	0.004	0.36	-0.60
Std5	0.592	0.007	1.19	1.959	0.086	4.40	-2.05
Std6	0.472	0.003	0.60				-100.00
Normal Control	0.788	0.004	0.54	0.697	0.014	1.98	





Test Report

Test Information

Name/ID	Assay	Absorbance	Concentration	Interpretation	Reference	Position
8/20/2014 10:53:50 AM						
Std1	Microcystins ADDA	1.350 Abs	0.0031 ng/mL		0.0000	A01
Std1	Microcystins ADDA	1.375 Abs	< 0.0000 ng/mL		0.0000	B01
Std2	Microcystins ADDA	1.100 Abs	0.1490 ng/mL		0.1500	C01
Std2	Microcystins ADDA	1.103 Abs	0.1462 ng/mL		0.1500	D01
Std3	Microcystins ADDA	0.896 Abs	0.4225 ng/mL		0.4000	E01
Std3	Microcystins ADDA	0.910 Abs	0.3960 ng/mL		0.4000	F01
Std4	Microcystins ADDA	0.714 Abs	0.9965 ng/mL		1.0000	G01
Std4	Microcystins ADDA	0.715 Abs	0.9915 ng/mL		1.0000	H01
Std5	Microcystins ADDA	0.587 Abs	2.0200 ng/mL		2.0000	A02
Std5	Microcystins ADDA	0.597 Abs	1.8980 ng/mL		2.0000	B02
Std6	Microcystins ADDA	0.470 Abs	> 5.0000 ng/mL		5.0000	C02
Std6	Microcystins ADDA	0.474 Abs	> 5.0000 ng/mL		5.0000	D02
Normal Control	Microcystins ADDA	0.791 Abs	0.6875 ng/mL			E02
Normal Control	Microcystins ADDA	0.785 Abs	0.7070 ng/mL			F02
AB18766	Microcystins ADDA	1.418 Abs	< 0.0000 ng/mL	Out(LR)	0.1500 - 5.0000	G02
AB18766	Microcystins ADDA	1.430 Abs	< 0.0000 ng/mL	Out(LR)	0.1500 - 5.0000	H02
AB18767	Microcystins ADDA	1.082 Abs	0.1655 ng/mL		0.1500 - 5.0000	A03
AB18767	Microcystins ADDA	1.150 Abs	0.1078 ng/mL	LOW	0.1500 - 5.0000	B03
AB18768	Microcystins ADDA	1.347 Abs	0.0039 ng/mL	LOW	0.1500 - 5.0000	C03
AB18768	Microcystins ADDA	1.350 Abs	0.0031 ng/mL	LOW	0.1500 - 5.0000	D03
AB18769	Microcystins ADDA	1.246 Abs	0.0468 ng/mL	LOW	0.1500 - 5.0000	E03
AB18769	Microcystins ADDA	1.252 Abs	0.0436 ng/mL	LOW	0.1500 - 5.0000	F03
AB18775	Microcystins ADDA	1.294 Abs	0.0236 ng/mL	LOW	0.1500 - 5.0000	G03
AB18775	Microcystins ADDA	1.338 Abs	0.0068 ng/mL	LOW	0.1500 - 5.0000	H03
AB18767LD	Microcystins ADDA	1.019 Abs	0.2330 ng/mL		0.1500 - 5.0000	A04
AB18767LD	Microcystins ADDA	1.037 Abs	0.2121 ng/mL		0.1500 - 5.0000	B04
20140818LB	Microcystins ADDA	1.441 Abs	< 0.0000 ng/mL	Out(LR)	0.1500 - 5.0000	C04
20140818LB	Microcystins ADDA	1.425 Abs	< 0.0000 ng/mL	Out(LR)	0.1500 - 5.0000	D04
AB18770	Microcystins ADDA	0.994 Abs	0.2645 ng/mL		0.1500 - 5.0000	E04
AB18770	Microcystins ADDA	1.002 Abs	0.2540 ng/mL		0.1500 - 5.0000	F04
AB18771	Microcystins ADDA	0.782 Abs	0.7170 ng/mL		0.1500 - 5.0000	G04
AB18771	Microcystins ADDA	0.751 Abs	0.8310 ng/mL		0.1500 - 5.0000	H04
AB18772	Microcystins ADDA	0.960 Abs	0.3125 ng/mL		0.1500 - 5.0000	A05
AB18772	Microcystins ADDA	1.014 Abs	0.2391 ng/mL		0.1500 - 5.0000	B05
AB18773	Microcystins ADDA	0.788 Abs	0.6970 ng/mL		0.1500 - 5.0000	C05
AB18773	Microcystins ADDA	0.789 Abs	0.6940 ng/mL		0.1500 - 5.0000	D05
AB18765	Microcystins ADDA	1.013 Abs	0.2405 ng/mL		0.1500 - 5.0000	E05
AB18765	Microcystins ADDA	0.992 Abs	0.2671 ng/mL		0.1500 - 5.0000	F05

The data in this report is preliminary without a quality control report. This data is not warranted for accuracy or other purposes.

Betty R. C. [Signature]

Laboratory Analyst Signature

8/21/14

Date