



## Cylindrospermopsin ELISA Summary Report

Office of Water Quality - Watershed Assessment and Planning Branch

Sample #	Location	Date Collected	Date Analyzed	Conc. (ppb)
AB18787	Chain O'Lakes SP (Field Duplicate)	8/25/2014	8/26/2014	<0.050
AB18788	Field Blank	8/25/2014	8/26/2014	<0.050
AB18789	Chain O'Lakes SP	8/25/2014	8/26/2014	<0.050
AB18790	Potato Creek SP	8/25/2014	8/26/2014	<0.050
AB18789LD	Chain O'Lakes SP (Lab Duplicate)	8/25/2014	8/26/2014	<0.050
20149825LB	Lab Blank	8/25/2014	8/26/2014	<0.050



# Test Report

## Test Information

Name/ID	Assay	Absorbance	Concentration	Interpretation	Reference	Position
8/26/2014 3:13:18 PM						
Std1	Cylindrospermopsin 1X	1.268 Abs	< 0.000 ng/mL		0.000	A01
Std1	Cylindrospermopsin 1X	1.235 Abs	0.000 ng/mL		0.000	B01
Std1	Cylindrospermopsin 1X	1.250 Abs	< 0.000 ng/mL		0.000	C01
Std2	Cylindrospermopsin 1X	0.994 Abs	0.048 ng/mL		0.050	D01
Std2	Cylindrospermopsin 1X	0.955 Abs	0.060 ng/mL		0.050	E01
Std2	Cylindrospermopsin 1X	0.981 Abs	0.052 ng/mL		0.050	F01
Std3	Cylindrospermopsin 1X	0.843 Abs	0.107 ng/mL		0.100	G01
Std3	Cylindrospermopsin 1X	0.844 Abs	0.106 ng/mL		0.100	H01
Std3	Cylindrospermopsin 1X	0.905 Abs	0.079 ng/mL		0.100	A02
Std4	Cylindrospermopsin 1X	0.663 Abs	0.245 ng/mL		0.250	B02
Std4	Cylindrospermopsin 1X	0.678 Abs	0.228 ng/mL		0.250	C02
Std4	Cylindrospermopsin 1X	0.676 Abs	0.230 ng/mL		0.250	D02
Std5	Cylindrospermopsin 1X	0.477 Abs	0.630 ng/mL		0.500	E02
Std5	Cylindrospermopsin 1X	0.500 Abs	0.552 ng/mL		0.500	F02
Std5	Cylindrospermopsin 1X	0.510 Abs	0.522 ng/mL		0.500	G02
Std6	Cylindrospermopsin 1X	0.431 Abs	0.840 ng/mL		1.000	H02
Std6	Cylindrospermopsin 1X	0.405 Abs	1.008 ng/mL		1.000	A03
Std6	Cylindrospermopsin 1X	0.402 Abs	1.030 ng/mL		1.000	B03
Std7	Cylindrospermopsin 1X	0.329 Abs	1.964 ng/mL		2.000	C03
Std7	Cylindrospermopsin 1X	0.339 Abs	1.768 ng/mL		2.000	D03
Std7	Cylindrospermopsin 1X	0.320 Abs	> 2.000 ng/mL		2.000	E03
Normal Control	Cylindrospermopsin 1X	0.441 Abs	0.786 ng/mL			F03
Normal Control	Cylindrospermopsin 1X	0.441 Abs	0.786 ng/mL			G03
Normal Control	Cylindrospermopsin 1X	0.459 Abs	0.702 ng/mL			H03
AB18787	Cylindrospermopsin 1X	1.249 Abs	0.000 ng/mL	LOW	0.050 - 2.000	A04
AB18787	Cylindrospermopsin 1X	1.260 Abs	< 0.000 ng/mL	Out(LR)	0.050 - 2.000	B04
AB18787	Cylindrospermopsin 1X	1.240 Abs	0.000 ng/mL	LOW	0.050 - 2.000	C04
AB18788	Cylindrospermopsin 1X	1.243 Abs	0.000 ng/mL	LOW	0.050 - 2.000	D04
AB18788	Cylindrospermopsin 1X	1.229 Abs	0.000 ng/mL	LOW	0.050 - 2.000	E04
AB18788	Cylindrospermopsin 1X	1.208 Abs	0.000 ng/mL	LOW	0.050 - 2.000	F04
AB18789	Cylindrospermopsin 1X	1.168 Abs	0.000 ng/mL	LOW	0.050 - 2.000	G04
AB18789	Cylindrospermopsin 1X	1.153 Abs	0.000 ng/mL	LOW	0.050 - 2.000	H04
AB18789	Cylindrospermopsin 1X	1.161 Abs	0.000 ng/mL	LOW	0.050 - 2.000	A05
AB18790	Cylindrospermopsin 1X	1.260 Abs	< 0.000 ng/mL	Out(LR)	0.050 - 2.000	B05
AB18790	Cylindrospermopsin 1X	1.242 Abs	0.000 ng/mL	LOW	0.050 - 2.000	C05
AB18790	Cylindrospermopsin 1X	1.274 Abs	< 0.000 ng/mL	Out(LR)	0.050 - 2.000	D05
AB18789LD	Cylindrospermopsin 1X	1.252 Abs	< 0.000 ng/mL	Out(LR)	0.050 - 2.000	E05
AB18789LD	Cylindrospermopsin 1X	1.241 Abs	0.000 ng/mL	LOW	0.050 - 2.000	F05
AB18789LD	Cylindrospermopsin 1X	1.230 Abs	0.000 ng/mL	LOW	0.050 - 2.000	G05
20140825LB	Cylindrospermopsin 1X	1.262 Abs	< 0.000 ng/mL	Out(LR)	0.050 - 2.000	H05
20140825LB	Cylindrospermopsin 1X	1.258 Abs	< 0.000 ng/mL	Out(LR)	0.050 - 2.000	A06
20140825LB	Cylindrospermopsin 1X	1.254 Abs	< 0.000 ng/mL	Out(LR)	0.050 - 2.000	B06

The data in this report is preliminary without a quality control report. This data is not warranted for accuracy or other purposes.

*Betty R. Smith*

Laboratory Analyst Signature

8-27-14

Date



# Assay Calibration Report

## Assay Information

Assay Name: Cylindrospermopsin 1X Units: ng/mL  
 Assay Mode: 4-Parameter Logistic # of decimals: 3  
 Normal: 0.050 - 2.000 Assay Description:

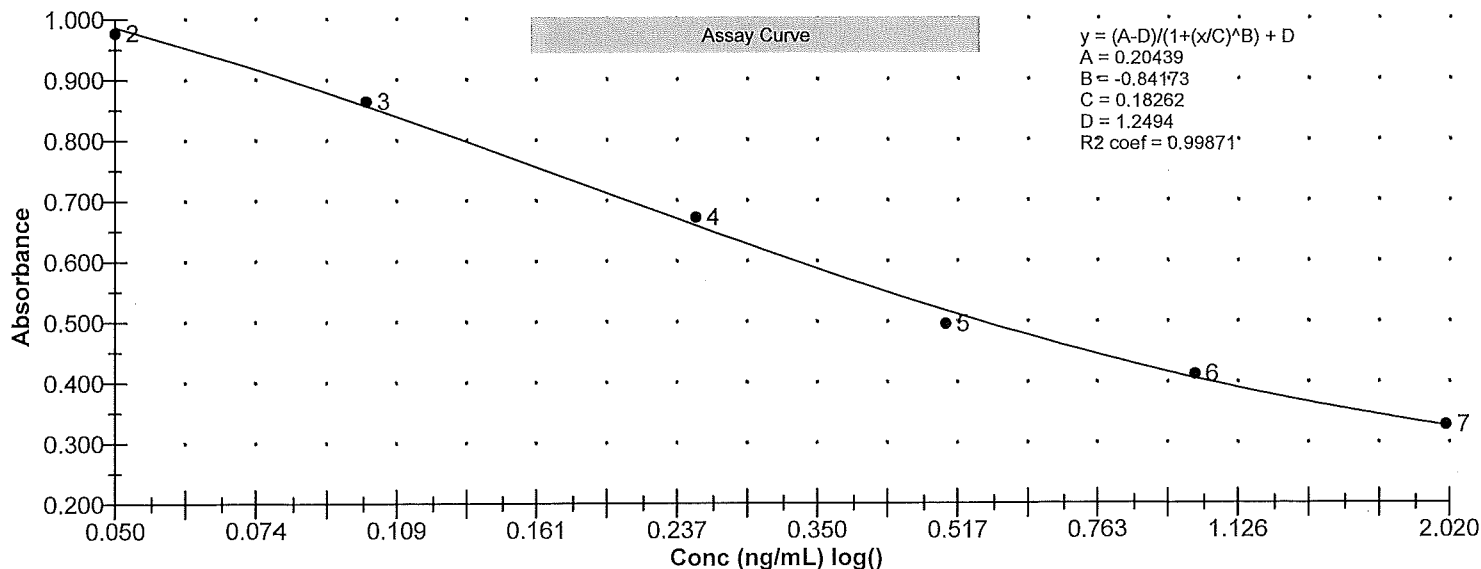
Controls:  
 Normal Control

Standards:  
 Std1, Concentration = 0.000, Minimum number to use: 3  
 Std2, Concentration = 0.050, Minimum number to use: 3  
 Std3, Concentration = 0.100, Minimum number to use: 3  
 Std4, Concentration = 0.250, Minimum number to use: 3  
 Std5, Concentration = 0.500, Minimum number to use: 3  
 Std6, Concentration = 1.000, Minimum number to use: 3  
 Std7, Concentration = 2.000, Minimum number to use: 3  
 Curve valid interval: 7 days 0 hours  
 Axis Mode: Y = Abs, X = Log(Conc)

## Assay Calibration and Statistics

Name	Absorbance	Concentration	Position
8/26/2014 3:13:18 PM			
Std1	1.268 Abs	< 0.000 ng/mL	A01
Std1	1.235 Abs	0.000 ng/mL	B01
Std1	1.250 Abs	< 0.000 ng/mL	C01
Std2	0.994 Abs	0.048 ng/mL	D01
Std2	0.955 Abs	0.060 ng/mL	E01
Std2	0.981 Abs	0.052 ng/mL	F01
Std3	0.843 Abs	0.107 ng/mL	G01
Std3	0.844 Abs	0.106 ng/mL	H01
Std3	0.905 Abs	0.079 ng/mL	A02
Std4	0.663 Abs	0.245 ng/mL	B02
Std4	0.678 Abs	0.228 ng/mL	C02
Std4	0.676 Abs	0.230 ng/mL	D02
Std5	0.477 Abs	0.630 ng/mL	E02
Std5	0.500 Abs	0.552 ng/mL	F02
Std5	0.510 Abs	0.522 ng/mL	G02
Std6	0.431 Abs	0.840 ng/mL	H02
Std6	0.405 Abs	1.008 ng/mL	A03
Std6	0.402 Abs	1.030 ng/mL	B03
Std7	0.329 Abs	1.964 ng/mL	C03
Std7	0.339 Abs	1.768 ng/mL	D03
Std7	0.320 Abs	> 2.000 ng/mL	E03
8/26/2014 3:13:18 PM			
Normal Control	0.459 Abs	0.702 ng/mL	H03
Normal Control	0.441 Abs	0.786 ng/mL	G03
Normal Control	0.441 Abs	0.786 ng/mL	F03

Name	Mean Abs	SD Abs	CV Abs	Mean Conc	SD Conc	CV Conc	Diff Conc
Std1	1.251	0.017	1.32				
Std2	0.977	0.020	2.03	0.053	0.006	11.46	6.00





# Assay Calibration Report

## Assay Information

Assay Name: Cylindrospermopsin 1X Units: ng/mL  
Assay Mode: 4-Parameter Logistic # of decimals: 3  
Normal: 0.050 - 2.000 Assay Description:

### Controls:

Normal Control

### Standards:

Std1, Concentration = 0.000, Minimum number to use: 3

Std2, Concentration = 0.050, Minimum number to use: 3

Std3, Concentration = 0.100, Minimum number to use: 3

Std4, Concentration = 0.250, Minimum number to use: 3

Std5, Concentration = 0.500, Minimum number to use: 3

Std6, Concentration = 1.000, Minimum number to use: 3

Std7, Concentration = 2.000, Minimum number to use: 3

Curve valid interval: 7 days 0 hours

Axis Mode: Y = Abs, X = Log(Conc)

## Assay Calibration and Statistics

Name	Mean Abs	SD Abs	CV Abs	Mean Conc	SD Conc	CV Conc	Diff Conc
Std3	0.864	0.036	4.11	0.097	0.016	16.32	-3.00
Std4	0.672	0.008	1.21	0.234	0.009	3.97	-6.40
Std5	0.496	0.017	3.41	0.568	0.056	9.82	13.60
Std6	0.413	0.016	3.86	0.959	0.104	10.83	-4.10
Std7	0.329	0.010	2.89				-100.00
Normal Control	0.447	0.010	2.32	0.758	0.048	6.40	

