



Assay Calibration Report

Assay Information

Assay Name: Cylindrospermopsin 1X Units: ng/mL
Assay Mode: 4-Parameter Logistic # of decimals: 3
Normal: 0.050 - 2.000 Assay Description:

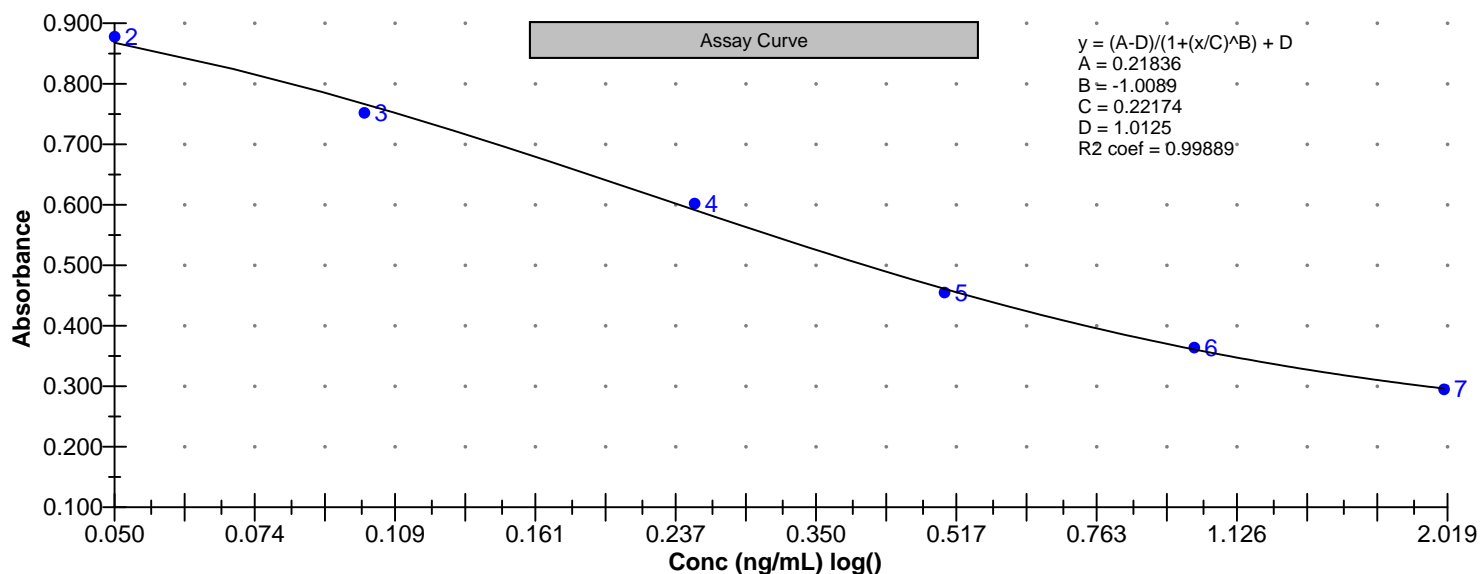
Controls:
Normal Control

Standards:
Std1, Concentration = 0.000, Minimum number to use: 2
Std2, Concentration = 0.050, Minimum number to use: 2
Std3, Concentration = 0.100, Minimum number to use: 2
Std4, Concentration = 0.250, Minimum number to use: 2
Std5, Concentration = 0.500, Minimum number to use: 2
Std6, Concentration = 1.000, Minimum number to use: 2
Std7, Concentration = 2.000, Minimum number to use: 2
Curve valid interval: 7 days 0 hours
Axis Mode: Y = Abs, X = Log(Conc)

Assay Calibration and Statistics

Name	Absorbance	Concentration	Position
7/25/2013 12:43:06 PM			
Std1	1.017 Abs	< 0.000 ng/mL	A01
Std1	1.005 Abs	0.000 ng/mL	B01
Std2	0.868 Abs	0.050 ng/mL	C01
Std2	0.889 Abs	0.041 ng/mL	D01
Std3	0.747 Abs	0.112 ng/mL	E01
Std3	0.756 Abs	0.106 ng/mL	F01
Std4	0.583 Abs	0.261 ng/mL	G01
Std4	0.620 Abs	0.217 ng/mL	H01
Std5	0.452 Abs	0.528 ng/mL	A02
Std5	0.458 Abs	0.510 ng/mL	B02
Std6	0.360 Abs	1.008 ng/mL	C02
Std6	0.368 Abs	0.944 ng/mL	D02
Std7	0.288 Abs	> 2.000 ng/mL	E02
Std7	0.303 Abs	1.822 ng/mL	F02
7/25/2013 12:43:06 PM			
Normal Control	0.411 Abs	0.686 ng/mL	G02
Normal Control	0.415 Abs	0.668 ng/mL	H02

Name	Mean Abs	SD Abs	CV Abs	Mean Conc	SD Conc	CV Conc	Diff Conc
Std1	1.011	0.008	0.84				
Std2	0.878	0.015	1.69	0.046	0.006	13.99	-8.00
Std3	0.752	0.006	0.85	0.109	0.004	3.89	9.00
Std4	0.602	0.026	4.35	0.239	0.031	13.02	-4.40
Std5	0.455	0.004	0.93	0.519	0.013	2.45	3.80
Std6	0.364	0.006	1.55	0.976	0.045	4.64	-2.40
Std7	0.295	0.011	3.59				-100.00





Assay Calibration Report

Assay Information

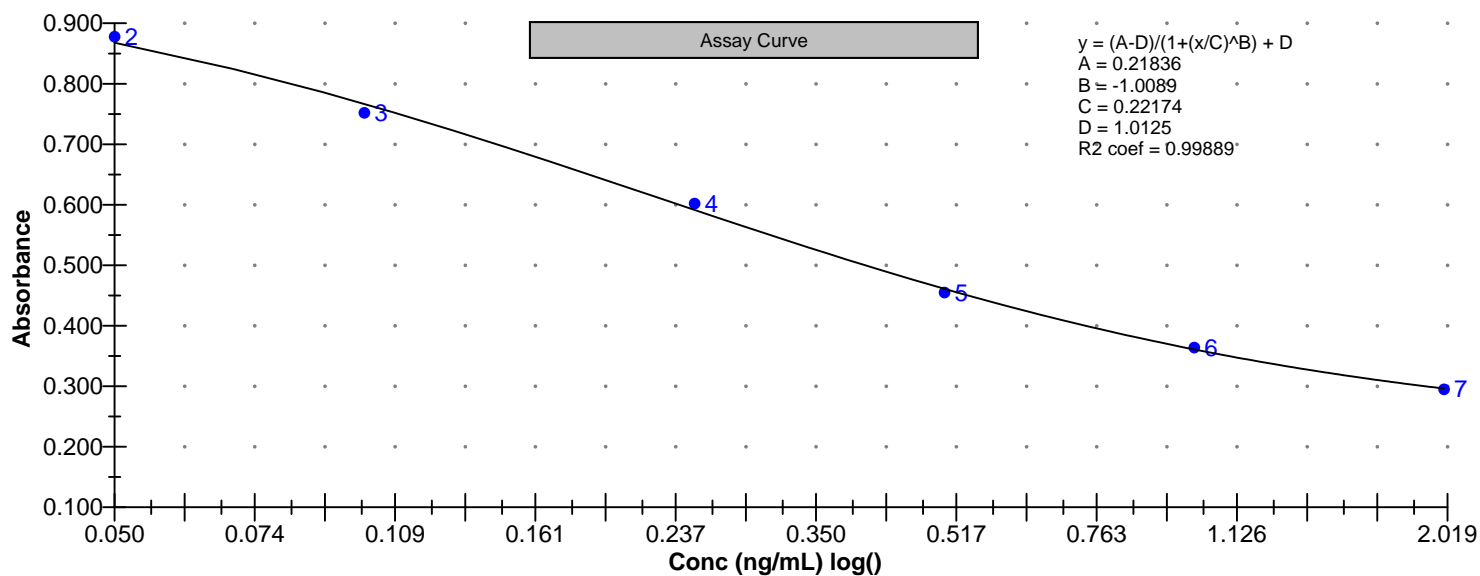
Assay Name: Cylindrospermopsin 1X Units: ng/mL
Assay Mode: 4-Parameter Logistic # of decimals: 3
Normal: 0.050 - 2.000 Assay Description:

Controls:
Normal Control

Standards:
Std1, Concentration = 0.000, Minimum number to use: 2
Std2, Concentration = 0.050, Minimum number to use: 2
Std3, Concentration = 0.100, Minimum number to use: 2
Std4, Concentration = 0.250, Minimum number to use: 2
Std5, Concentration = 0.500, Minimum number to use: 2
Std6, Concentration = 1.000, Minimum number to use: 2
Std7, Concentration = 2.000, Minimum number to use: 2
Curve valid interval: 7 days 0 hours
Axis Mode: Y = Abs, X = Log(Conc)

Assay Calibration and Statistics

Name	Mean Abs	SD Abs	CV Abs	Mean Conc	SD Conc	CV Conc	Diff Conc
Normal Control	0.413	0.003	0.68	0.677	0.013	1.88	





Test Report

Test Information

Name/ID	Assay	Absorbance	Concentration	Interpretation	Reference	Position
7/25/2013 12:43:06 PM						
Std1	Cyldrospermopsin 1X	1.017 Abs	< 0.000 ng/mL		0.000	A01
Std1	Cyldrospermopsin 1X	1.005 Abs	0.000 ng/mL		0.000	B01
Std2	Cyldrospermopsin 1X	0.868 Abs	0.050 ng/mL		0.050	C01
Std2	Cyldrospermopsin 1X	0.889 Abs	0.041 ng/mL		0.050	D01
Std3	Cyldrospermopsin 1X	0.747 Abs	0.112 ng/mL		0.100	E01
Std3	Cyldrospermopsin 1X	0.756 Abs	0.106 ng/mL		0.100	F01
Std4	Cyldrospermopsin 1X	0.583 Abs	0.261 ng/mL		0.250	G01
Std4	Cyldrospermopsin 1X	0.620 Abs	0.217 ng/mL		0.250	H01
Std5	Cyldrospermopsin 1X	0.452 Abs	0.528 ng/mL		0.500	A02
Std5	Cyldrospermopsin 1X	0.458 Abs	0.510 ng/mL		0.500	B02
Std6	Cyldrospermopsin 1X	0.360 Abs	1.008 ng/mL		1.000	C02
Std6	Cyldrospermopsin 1X	0.368 Abs	0.944 ng/mL		1.000	D02
Std7	Cyldrospermopsin 1X	0.288 Abs	> 2.000 ng/mL		2.000	E02
Std7	Cyldrospermopsin 1X	0.303 Abs	1.822 ng/mL		2.000	F02
Normal Control	Cyldrospermopsin 1X	0.411 Abs	0.686 ng/mL			G02
Normal Control	Cyldrospermopsin 1X	0.415 Abs	0.668 ng/mL			H02
AB13739	Cyldrospermopsin 1X	0.988 Abs	0.000 ng/mL	LOW	0.050 - 2.000	A03
AB13739	Cyldrospermopsin 1X	1.018 Abs [1.0030]	< 0.000 ng/mL [0.000]	Out(LR) [Low]	0.050 - 2.000	B03
AB13742	Cyldrospermopsin 1X	1.032 Abs	< 0.000 ng/mL	Out(LR)	0.050 - 2.000	C03
AB13742	Cyldrospermopsin 1X	0.971 Abs [1.0015]	0.000 ng/mL [0.000]	Low [Low]	0.050 - 2.000	D03
AB13740	Cyldrospermopsin 1X	1.041 Abs	< 0.000 ng/mL	Out(LR)	0.050 - 2.000	E03
AB13740	Cyldrospermopsin 1X	1.050 Abs [1.0455]	< 0.000 ng/mL [< 0.000]	Out(LR) [Out(LR)]	0.050 - 2.000	F03
AB13741	Cyldrospermopsin 1X	1.065 Abs	< 0.000 ng/mL	Out(LR)	0.050 - 2.000	G03
AB13741	Cyldrospermopsin 1X	1.043 Abs [1.0540]	< 0.000 ng/mL [< 0.000]	Out(LR) [Out(LR)]	0.050 - 2.000	H03
AB13740LD	Cyldrospermopsin 1X	0.992 Abs	0.000 ng/mL	LOW	0.050 - 2.000	A04
AB13740LD	Cyldrospermopsin 1X	0.982 Abs [0.9870]	0.000 ng/mL [0.000]	Low [Low]	0.050 - 2.000	B04
AB13743	Cyldrospermopsin 1X	0.993 Abs	0.000 ng/mL	LOW	0.050 - 2.000	C04
AB13743	Cyldrospermopsin 1X	1.022 Abs [1.0075]	< 0.000 ng/mL [0.000]	Out(LR) [Low]	0.050 - 2.000	D04
AB13744	Cyldrospermopsin 1X	0.977 Abs	0.000 ng/mL	LOW	0.050 - 2.000	E04
AB13744	Cyldrospermopsin 1X	1.009 Abs [0.9930]	0.000 ng/mL [0.000]	Low [Low]	0.050 - 2.000	F04
AB13745	Cyldrospermopsin 1X	1.016 Abs	< 0.000 ng/mL	Out(LR)	0.050 - 2.000	G04
AB13745	Cyldrospermopsin 1X	1.030 Abs [1.0230]	< 0.000 ng/mL [< 0.000]	Out(LR) [Out(LR)]	0.050 - 2.000	H04
AB13746	Cyldrospermopsin 1X	1.018 Abs	< 0.000 ng/mL	Out(LR)	0.050 - 2.000	A05
AB13746	Cyldrospermopsin 1X	1.012 Abs [1.0150]	0.000 ng/mL [< 0.000]	Low [Out(LR)]	0.050 - 2.000	B05
AB13747	Cyldrospermopsin 1X	1.043 Abs	< 0.000 ng/mL	Out(LR)	0.050 - 2.000	C05
AB13747	Cyldrospermopsin 1X	1.020 Abs [1.0315]	< 0.000 ng/mL [< 0.000]	Out(LR) [Out(LR)]	0.050 - 2.000	D05
20130723LB	Cyldrospermopsin 1X	0.975 Abs	0.000 ng/mL	LOW	0.050 - 2.000	E05
20130723LB	Cyldrospermopsin 1X	0.968 Abs [0.9715]	0.000 ng/mL [0.000]	Low [Low]	0.050 - 2.000	F05

Notes

Signature  July 25, 2013



Cylindrospermopsin 1X ELISA Summary Report

Office of Water Quality - Watershed Assessment and Planning Branch

Sample #	Location	Date Collected	Date Analyzed	Conc. (ppb)
AB13739	Mississinewa SRA	7/22/2013	7/25/2013	<0.050
AB13742	Mississinewa SRA Field Dup	7/22/2013	7/25/2013	<0.050
AB13740	Potato Creek SP	7/22/2013	7/25/2013	<0.050
AB13741	Field Blank	7/22/2013	7/25/2013	<0.050
AB13740LD	Potato Creek SP Lab Dup	7/22/2013	7/25/2013	<0.050
AB13743	Chain O Lakes SP	7/23/2013	7/25/2013	<0.050
AB13744	Pokagon SP	7/23/2013	7/25/2013	<0.050
AB13745	Salamonie Lost Bridge West SRA	7/23/2013	7/25/2013	<0.050
AB13746	Field Blank	7/23/2013	7/25/2013	<0.050
AB13747	Chian O Lakes Field Dup	7/23/2013	7/25/2013	<0.050
20130723LB	Lab Blank	7/23/2013	7/25/2013	<0.050