



Assay Calibration Report

Assay Information

Assay Name: Cylindrospermopsin 1X Units: ng/mL
 Assay Mode: 4-Parameter Logistic # of decimals: 3
 Normal: 0.050 - 2.000 Assay Description:

Controls:

Normal Control

Standards:

Std1, Concentration = 0.000, Minimum number to use: 2
 Std2, Concentration = 0.050, Minimum number to use: 2
 Std3, Concentration = 0.100, Minimum number to use: 2
 Std4, Concentration = 0.250, Minimum number to use: 2
 Std5, Concentration = 0.500, Minimum number to use: 2
 Std6, Concentration = 1.000, Minimum number to use: 2
 Std7, Concentration = 2.000, Minimum number to use: 2

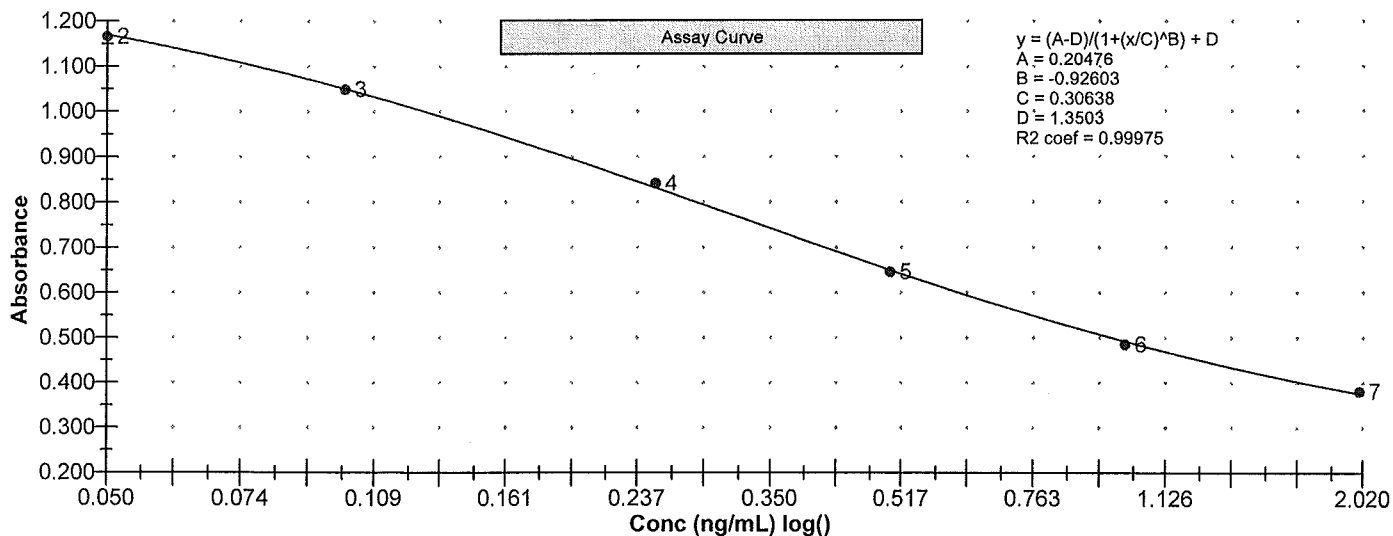
Curve valid interval: 7 days 0 hours

Axis Mode: Y = Abs, X = Log(Conc)

Assay Calibration and Statistics

Name	Absorbance	Concentration	Position
8/8/2012 3:06:29 PM			
Std1	1.339 Abs	0.002 ng/mL	A01
Std1	1.366 Abs	< 0.000 ng/mL	B01
Std2	1.173 Abs	0.049 ng/mL	C01
Std2	1.160 Abs	0.054 ng/mL	D01
Std3	1.024 Abs	0.113 ng/mL	E01
Std3	1.073 Abs	0.089 ng/mL	F01
Std4	0.795 Abs	0.287 ng/mL	G01
Std4	0.887 Abs	0.202 ng/mL	H01
Std5	0.639 Abs	0.522 ng/mL	A02
Std5	0.654 Abs	0.492 ng/mL	B02
Std6	0.477 Abs	1.078 ng/mL	C02
Std6	0.494 Abs	0.989 ng/mL	D02
Std7	0.377 Abs	1.988 ng/mL	E02
Std7	0.385 Abs	1.876 ng/mL	F02
8/8/2012 3:06:29 PM			
Normal Control	0.604 Abs	0.602 ng/mL	G02
Normal Control	0.619 Abs	0.566 ng/mL	H02

Name	Mean Abs	SD Abs	CV Abs	Mean Conc	SD Conc	CV Conc	Diff Conc
Std1	1.352	0.019	1.41				
Std2	1.166	0.009	0.79	0.052	0.004	6.87	4.00
Std3	1.049	0.035	3.30	0.101	0.017	16.80	1.00
Std4	0.841	0.065	7.74	0.245	0.060	24.58	-2.00
Std5	0.646	0.011	1.64	0.507	0.021	4.18	1.40
Std6	0.485	0.012	2.48	1.033	0.063	6.09	3.30
Std7	0.381	0.006	1.48	1.932	0.079	4.10	-3.40





Assay Calibration Report

Assay Information

Assay Name: Cylindrospermopsin 1X Units: ng/mL
Assay Mode: 4-Parameter Logistic # of decimals: 3
Normal: 0.050 - 2.000 Assay Description:

Controls:
Normal Control

Standards:

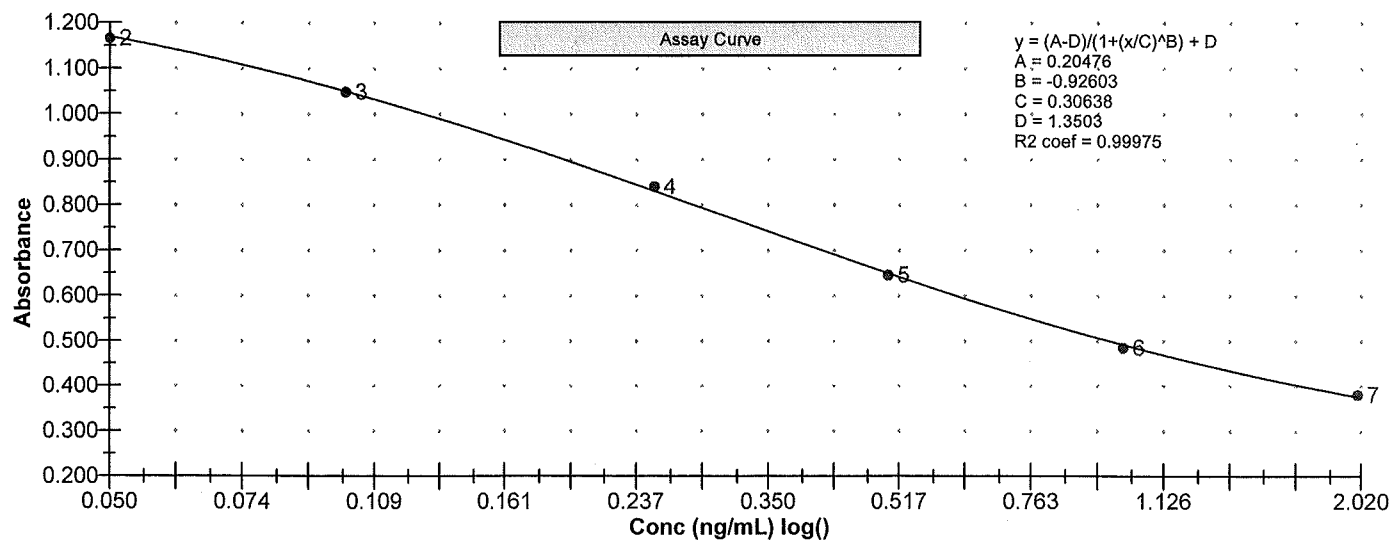
Std1, Concentration = 0.000, Minimum number to use: 2
Std2, Concentration = 0.050, Minimum number to use: 2
Std3, Concentration = 0.100, Minimum number to use: 2
Std4, Concentration = 0.250, Minimum number to use: 2
Std5, Concentration = 0.500, Minimum number to use: 2
Std6, Concentration = 1.000, Minimum number to use: 2
Std7, Concentration = 2.000, Minimum number to use: 2

Curve valid interval: 7 days 0 hours

Axis Mode: Y = Abs, X = Log(Conc)

Assay Calibration and Statistics

Name	Mean Abs	SD Abs	CV Abs	Mean Conc	SD Conc	CV Conc	Diff Conc
Normal Control	0.612	0.011	1.73	0.584	0.025	4.36	





Test Report

Test Information

Name/ID	Assay	Absorbance	Concentration	Interpretation	Reference	Position
8/8/2012 3:06:29 PM						
Std1	Cylindrospermopsin 1X	1.339 Abs	0.002 ng/mL			A01
Std1	Cylindrospermopsin 1X	1.366 Abs	< 0.000 ng/mL			B01
Std2	Cylindrospermopsin 1X	1.173 Abs	0.049 ng/mL			C01
Std2	Cylindrospermopsin 1X	1.160 Abs	0.054 ng/mL			D01
Std3	Cylindrospermopsin 1X	1.024 Abs	0.113 ng/mL			E01
Std3	Cylindrospermopsin 1X	1.073 Abs	0.089 ng/mL			F01
Std4	Cylindrospermopsin 1X	0.795 Abs	0.287 ng/mL			G01
Std4	Cylindrospermopsin 1X	0.887 Abs	0.202 ng/mL			H01
Std5	Cylindrospermopsin 1X	0.639 Abs	0.522 ng/mL			A02
Std5	Cylindrospermopsin 1X	0.654 Abs	0.492 ng/mL			B02
Std6	Cylindrospermopsin 1X	0.477 Abs	1.078 ng/mL			C02
Std6	Cylindrospermopsin 1X	0.494 Abs	0.989 ng/mL			D02
Std7	Cylindrospermopsin 1X	0.377 Abs	1.988 ng/mL			E02
Std7	Cylindrospermopsin 1X	0.385 Abs	1.876 ng/mL			F02
Normal Control	Cylindrospermopsin 1X	0.604 Abs	0.602 ng/mL			G02
Normal Control	Cylindrospermopsin 1X	0.619 Abs	0.566 ng/mL			H02
20120806LB	Cylindrospermopsin 1X	1.288 Abs	0.014 ng/mL	LOW	0.050 - 2.000	A03
20120806LB	Cylindrospermopsin 1X	1.222 Abs [1.2550]	0.033 ng/mL [0.023]	Low [Low]	0.050 - 2.000	B03
AB09756	Cylindrospermopsin 1X	1.152 Abs	0.057 ng/mL		0.050 - 2.000	C03
AB09756	Cylindrospermopsin 1X	1.136 Abs [1.1440]	0.063 ng/mL [0.060]		0.050 - 2.000	D03
AB09759	Cylindrospermopsin 1X	0.993 Abs	0.130 ng/mL		0.050 - 2.000	E03
AB09759	Cylindrospermopsin 1X	1.096 Abs [1.0445]	0.079 ng/mL [0.103]		0.050 - 2.000	F03
AB09759LD	Cylindrospermopsin 1X	1.220 Abs	0.033 ng/mL	LOW	0.050 - 2.000	G03
AB09759LD	Cylindrospermopsin 1X	1.285 Abs [1.2525]	0.015 ng/mL [0.024]	Low [Low]	0.050 - 2.000	H03
AB09757	Cylindrospermopsin 1X	1.264 Abs	0.020 ng/mL	LOW	0.050 - 2.000	A04
AB09757	Cylindrospermopsin 1X	1.313 Abs [1.2885]	0.008 ng/mL [0.014]	Low [Low]	0.050 - 2.000	B04
AB09758	Cylindrospermopsin 1X	1.313 Abs	0.008 ng/mL	LOW	0.050 - 2.000	C04
AB09758	Cylindrospermopsin 1X	1.346 Abs [1.3295]	0.001 ng/mL [0.004]	Low [Low]	0.050 - 2.000	D04
AB09755	Cylindrospermopsin 1X	1.269 Abs	0.019 ng/mL	LOW	0.050 - 2.000	E04
AB09755	Cylindrospermopsin 1X	1.282 Abs [1.2755]	0.016 ng/mL [0.017]	Low [Low]	0.050 - 2.000	F04
AB09545	Cylindrospermopsin 1X	1.345 Abs	0.001 ng/mL	LOW	0.050 - 2.000	G04
AB09545	Cylindrospermopsin 1X	1.285 Abs [1.3150]	0.015 ng/mL [0.007]	Low [Low]	0.050 - 2.000	H04

Notes

Signature



Cylindrospermopsin 1X ELISA Summary Report

Office of Water Quality - Watershed Assessment and Planning Branch

Sample #	Location	Date Collected	Date Analyzed	Conc. (ppb)
20120806LB	Lab Blank	8/6/2012	8/7/2012	< 0.050
AB09756	Field Blank	8/7/2012	8/7/2012	0.060
AB09759	Salamonie	8/6/2012	8/7/2012	0.103
AB09759LD	Lab Duplicate	8/6/2012	8/7/2012	< 0.050
AB09757	Worster Lake	8/7/2012	8/7/2012	< 0.050
AB09758	Mississinewa	8/7/2012	8/7/2012	< 0.050
AB09755	Field Duplicate	8/6/2012	8/7/2012	< 0.050
AB09545	Brookville (Quakertown)	7/30/2012	8/7/2012	< 0.050