



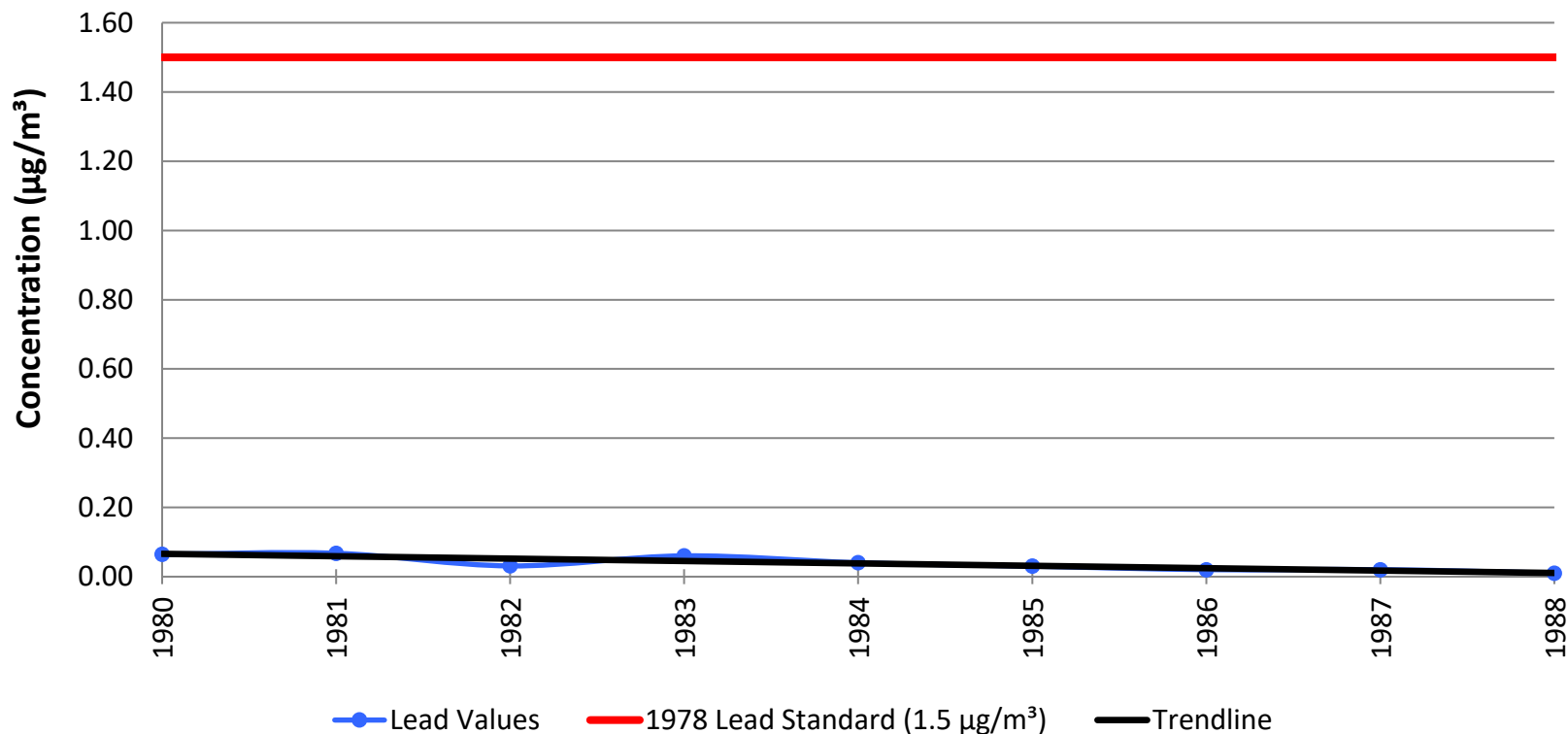
Status of Indiana Air Quality Central Southwest Indiana Region





Lead

**Lead Highest Annual Quarterly Values
Central Southwest Indiana**

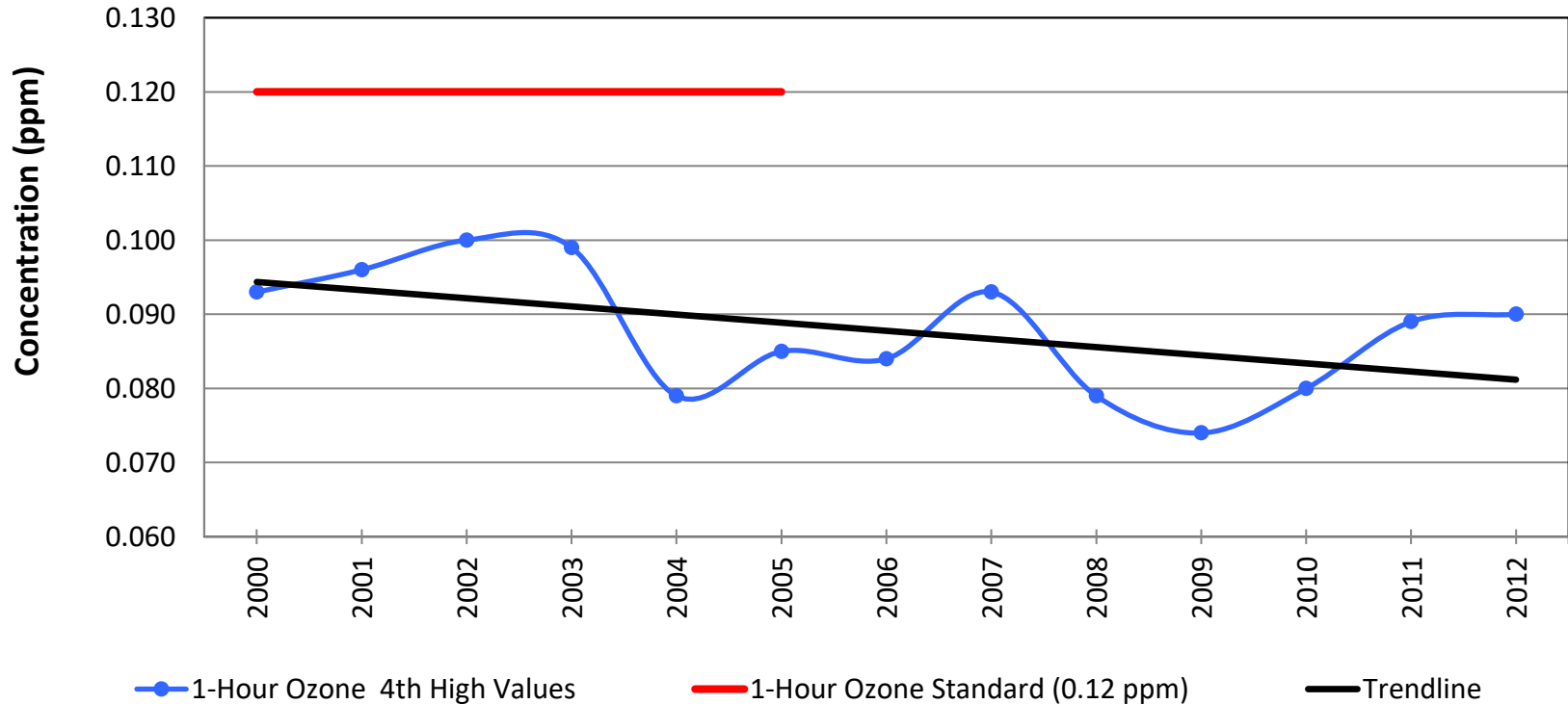


* Lead Standard Lowered to 0.15 µg/m³ in 2008.



Ozone

1-Hour Ozone 4th High Values Central Southwest Indiana

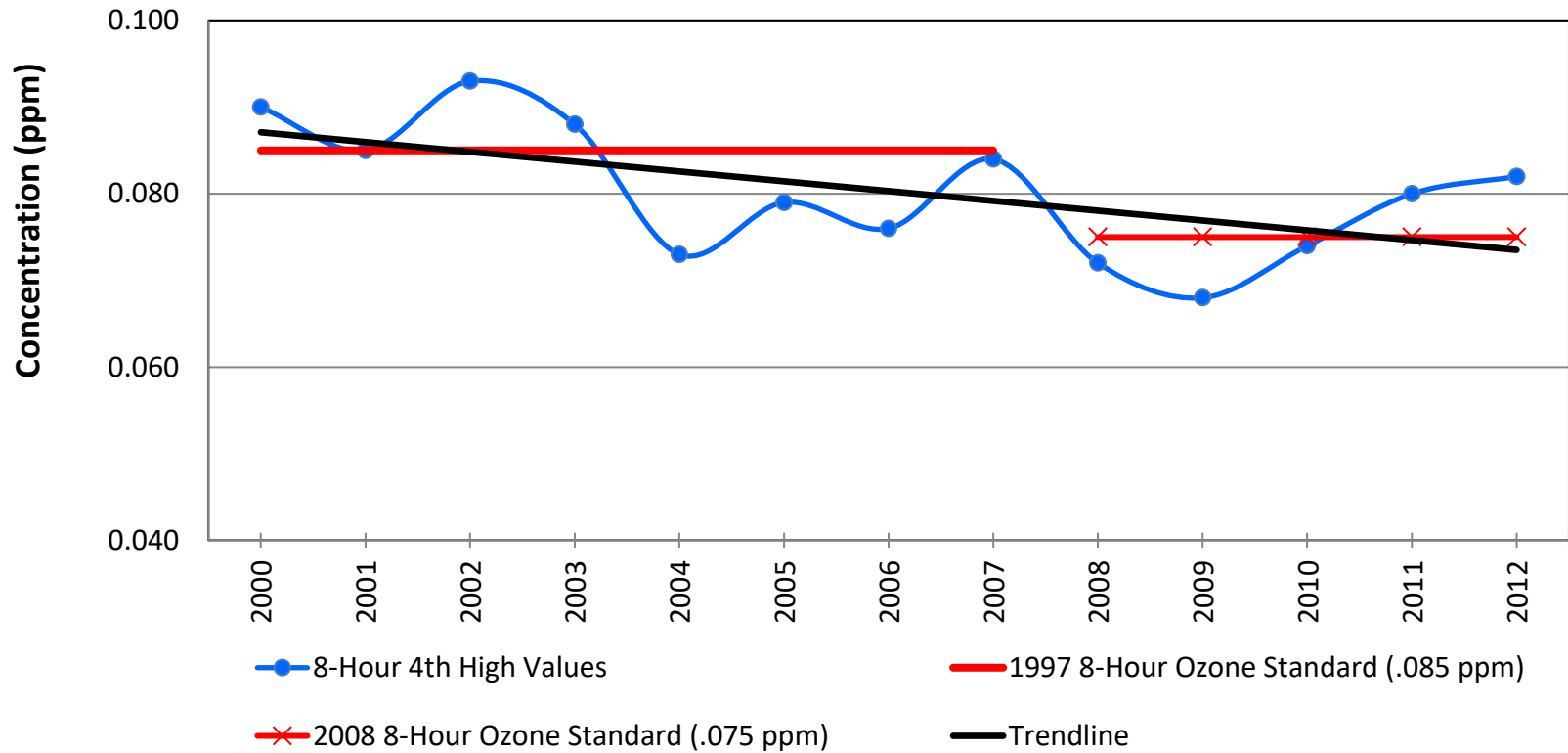


* 1-Hour Ozone Standard Revoked in 2005.



Ozone

8-Hour Ozone 4th High Values Central Southwest Indiana

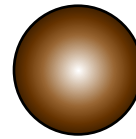
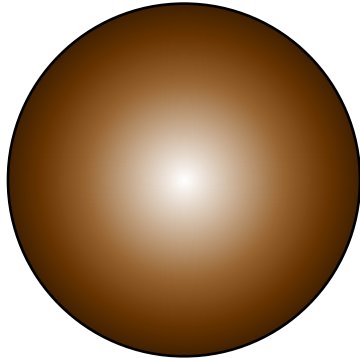


* 8-Hour Ozone Standard Established in 1997.



Changing Particulate Standards

Name	Total Suspended Particle (TSP)	PM ₁₀	PM _{2.5}
Dates	1970-1987	1983-Present	1999-Present
Regulated Size	30 μm	10 μm	2.5 μm
24-Hour Standard	260	150	65 (1999-2005) 35 (2006-Present)
Annual Standard	75	50	15

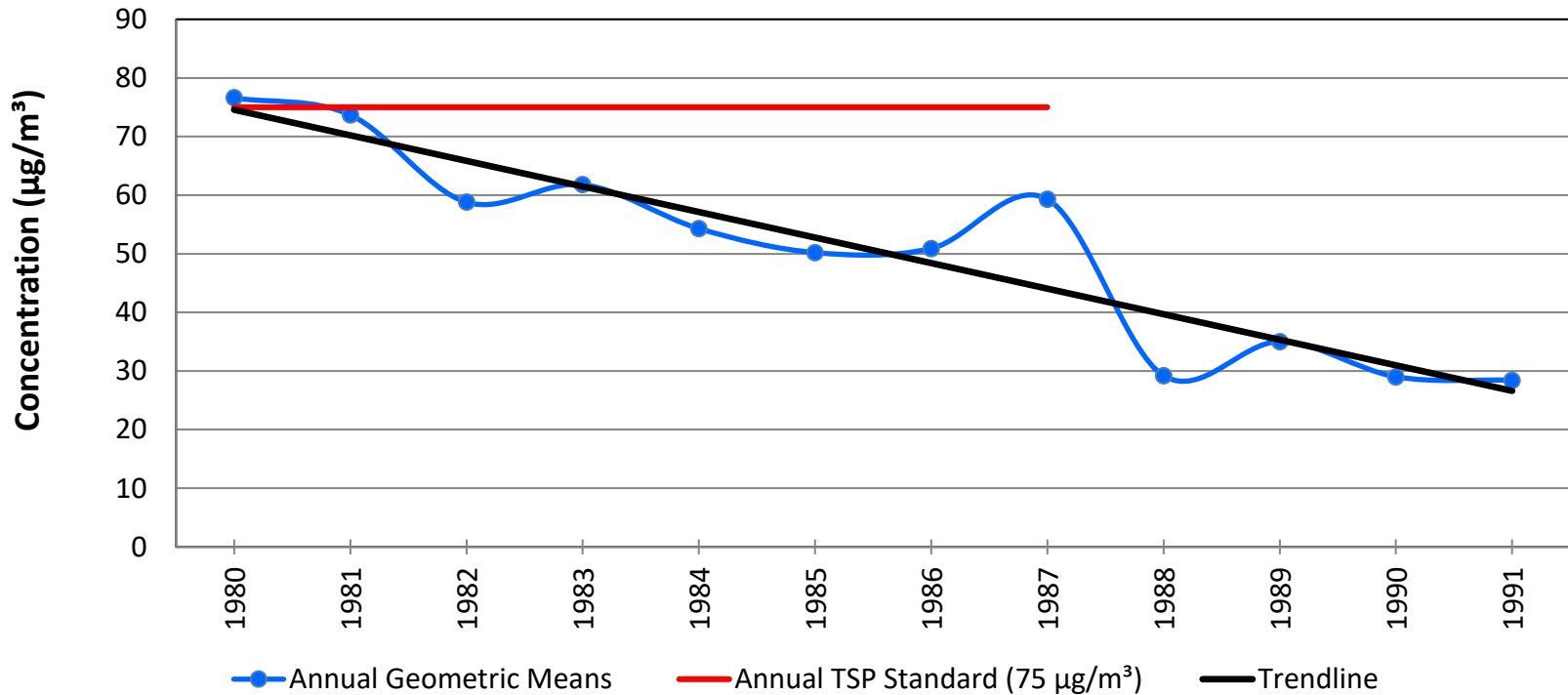


*μm = micrograms



Particulate Matter

Annual Geometric Mean TSP Values
Central Southwest Indiana

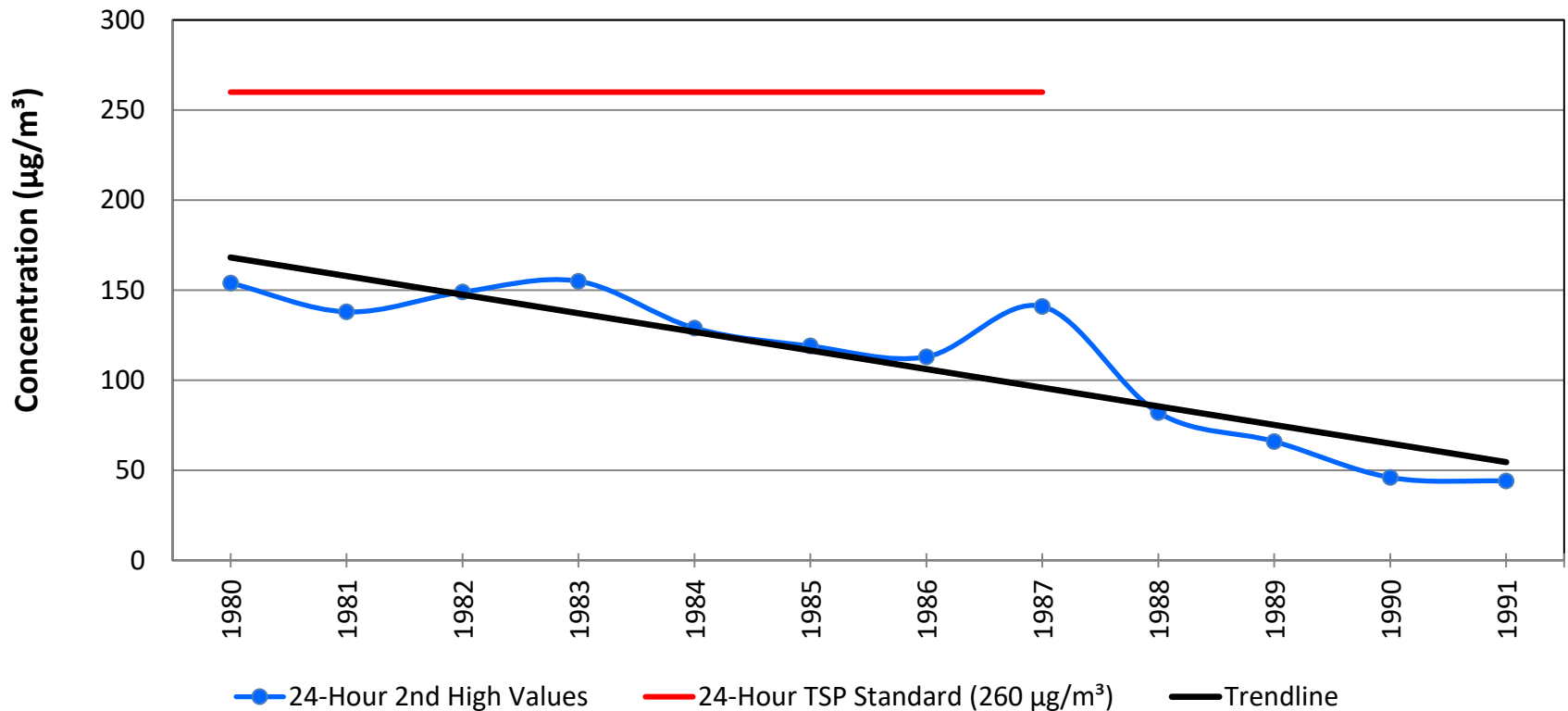


*Annual TSP Standard Revoked in 1987.



Particulate Matter

24-Hour TSP 2nd High Values Central Southwest Indiana



*24-Hour TSP Standard Revoked in 1987.



Air Quality and You

- To learn more about your air quality and what you can do to help, visit:

Smogwatch.IN.gov

- To acquire additional information about air quality in Indiana and IDEM's role, visit:

www.idem.IN.gov



Contact Information for IDEM's Office of Air Quality

- To call please dial:
(317) 233-0178
- To write, please use this mailing address:
**IDEM, Office of Air Quality
100 North Senate Avenue
Indianapolis, IN 46204**