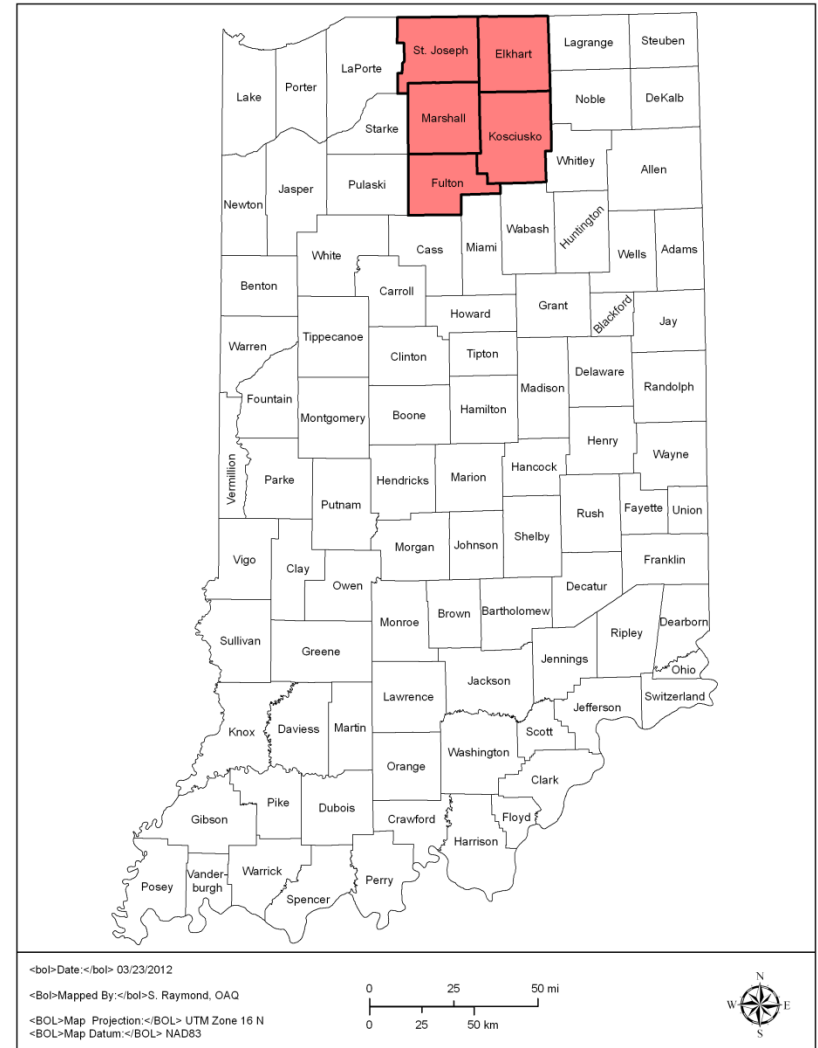




Status of Indiana Air Quality

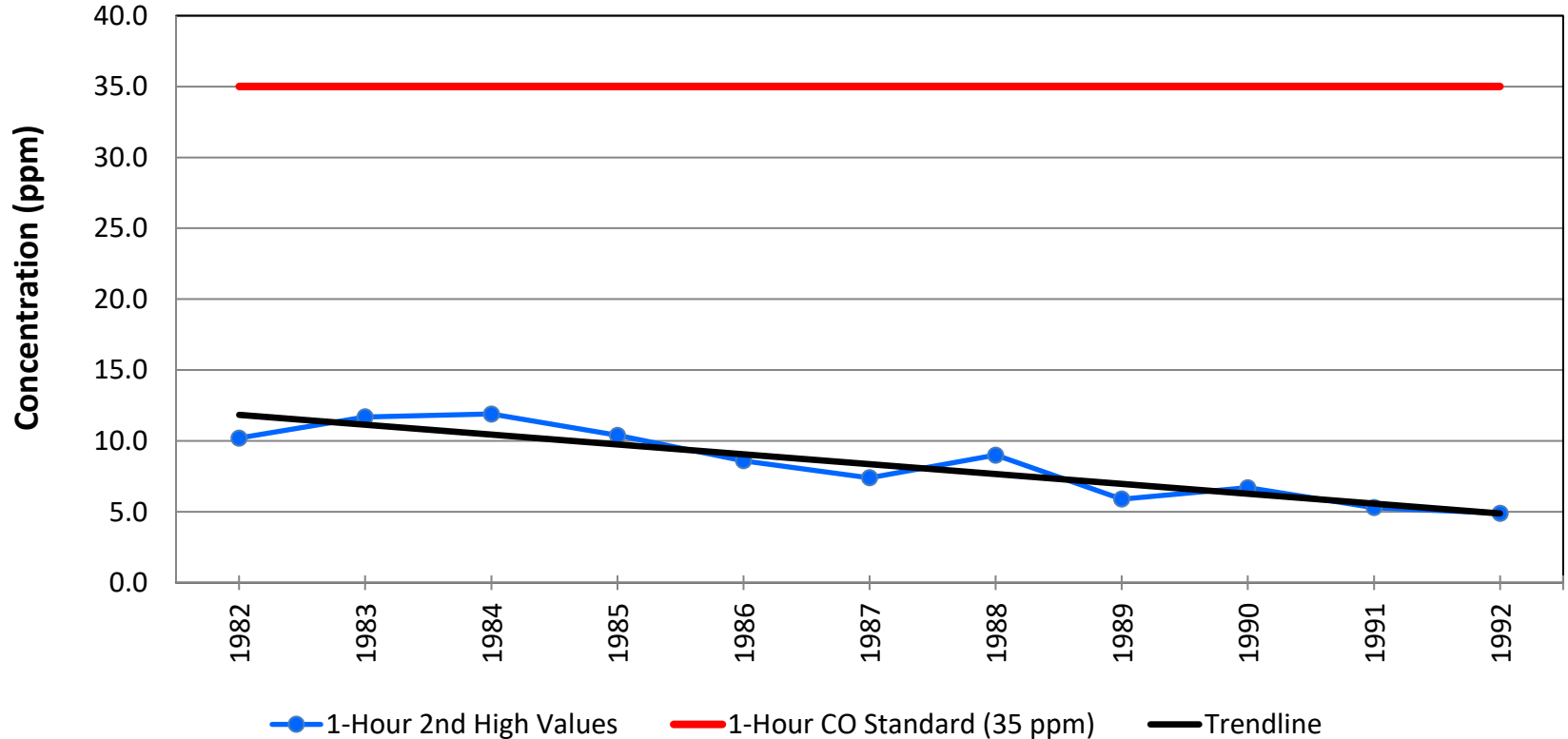
North Central Indiana Region





Carbon Monoxide

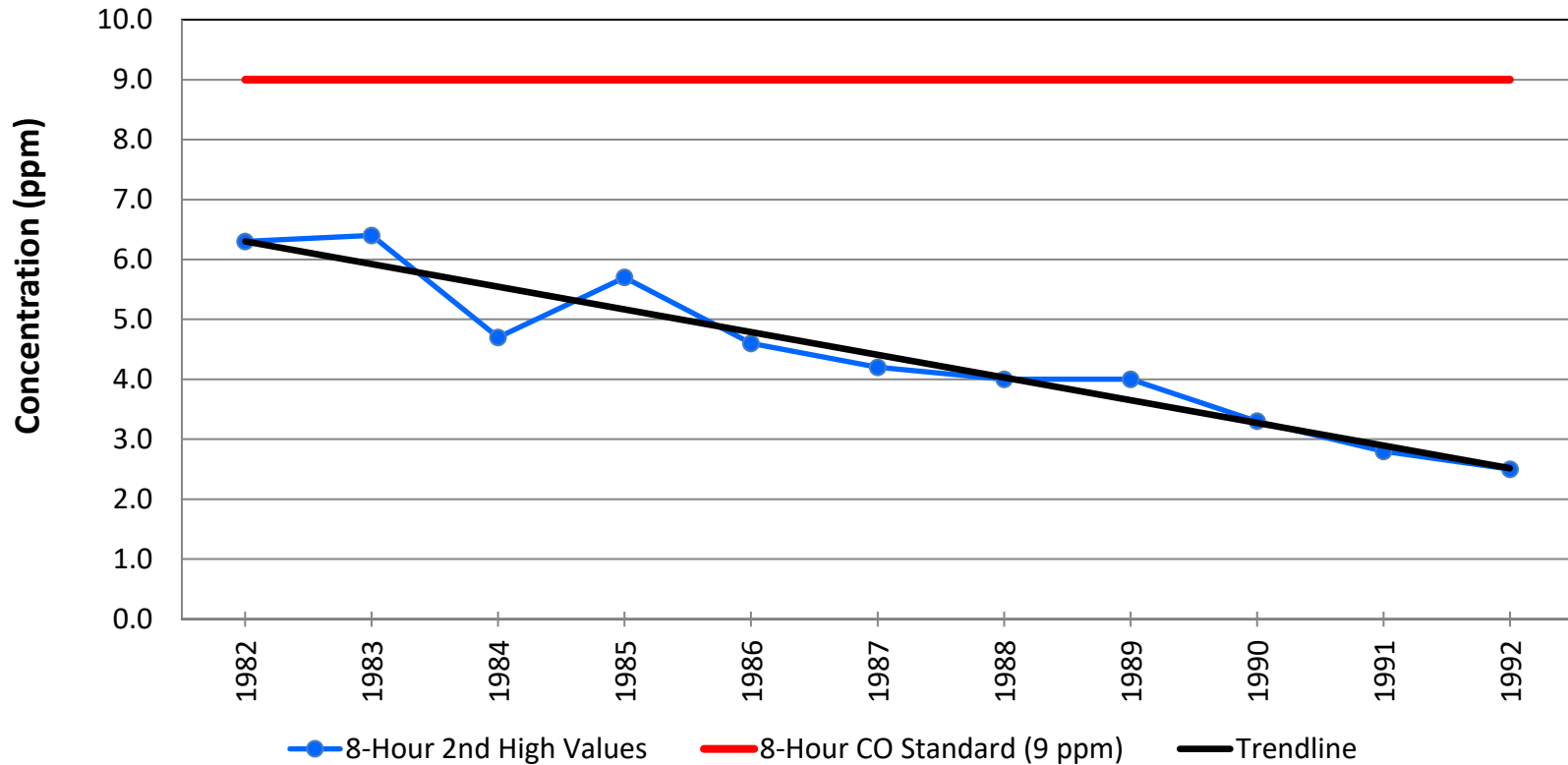
1-Hour CO 2nd High Values North Central Indiana





Carbon Monoxide

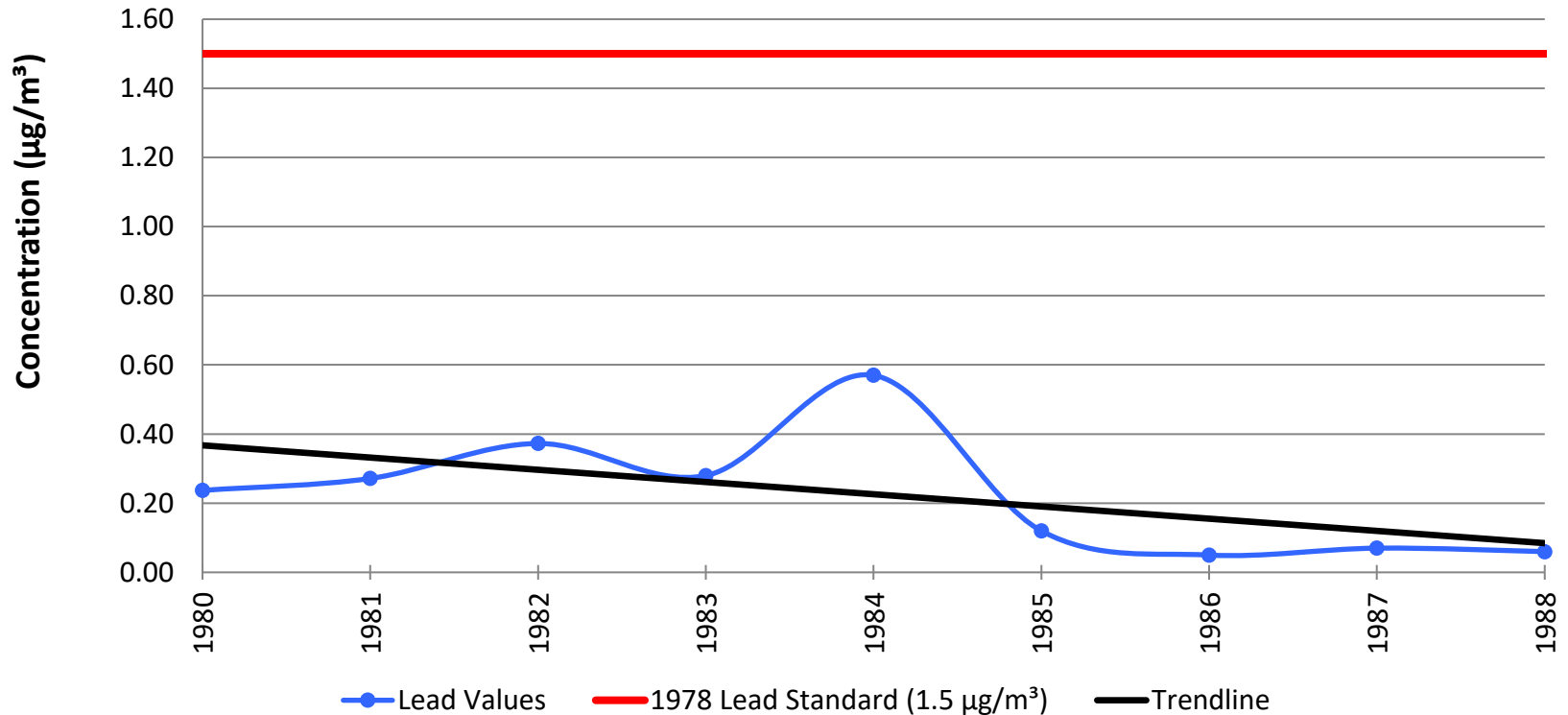
8-Hour CO 2nd High Values
North Central Indiana





Lead

**Lead Highest Annual Quarterly Values
North Central Indiana**

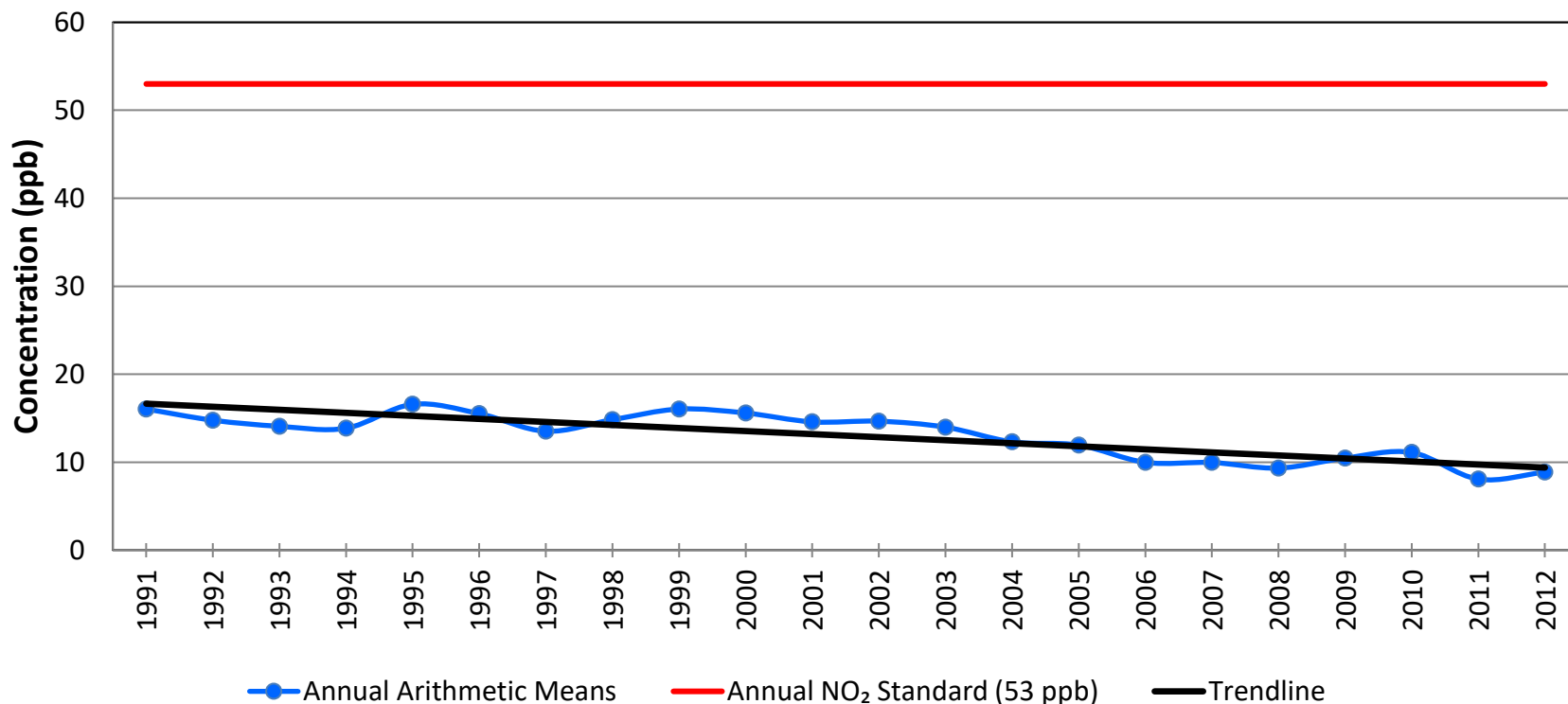


* Lead Standard Lowered to 0.15 µg/m³ in 2008.



Nitrogen Dioxide

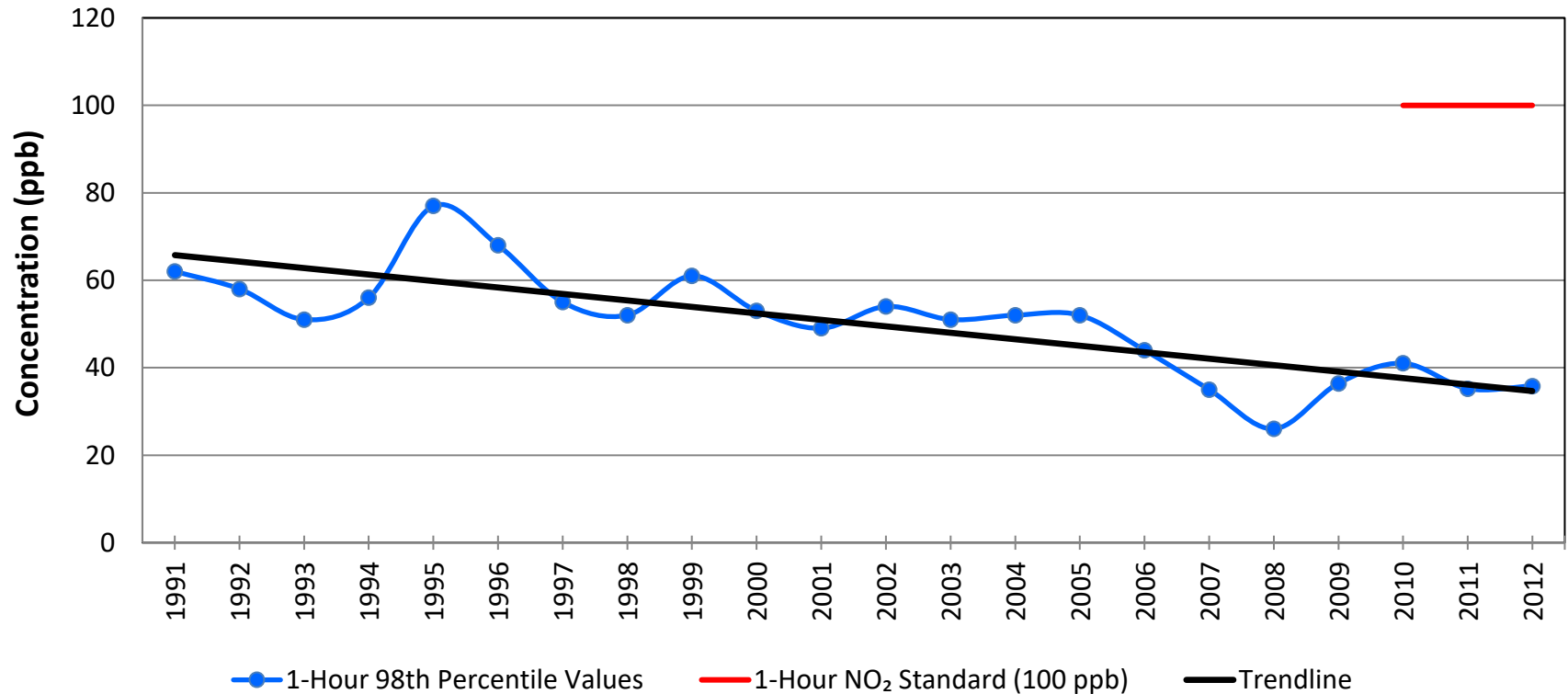
Annual Arithmetic Mean NO₂ Values
North Central Indiana





Nitrogen Dioxide

1-Hour NO₂ 98th Percentile Values
North Central Indiana

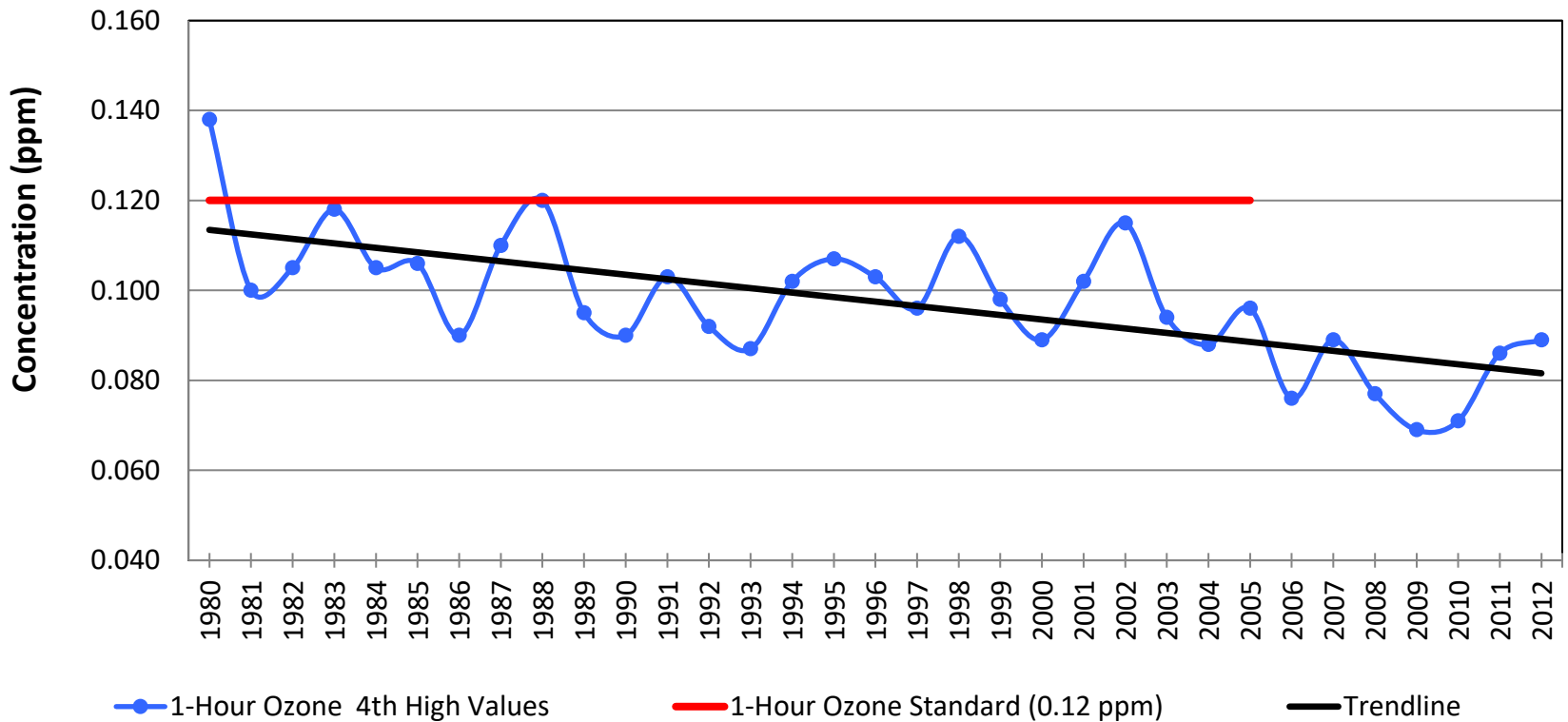


* 1-Hour NO₂ Standard Established in 2010.



Ozone

1-Hour Ozone 4th High Values North Central Indiana

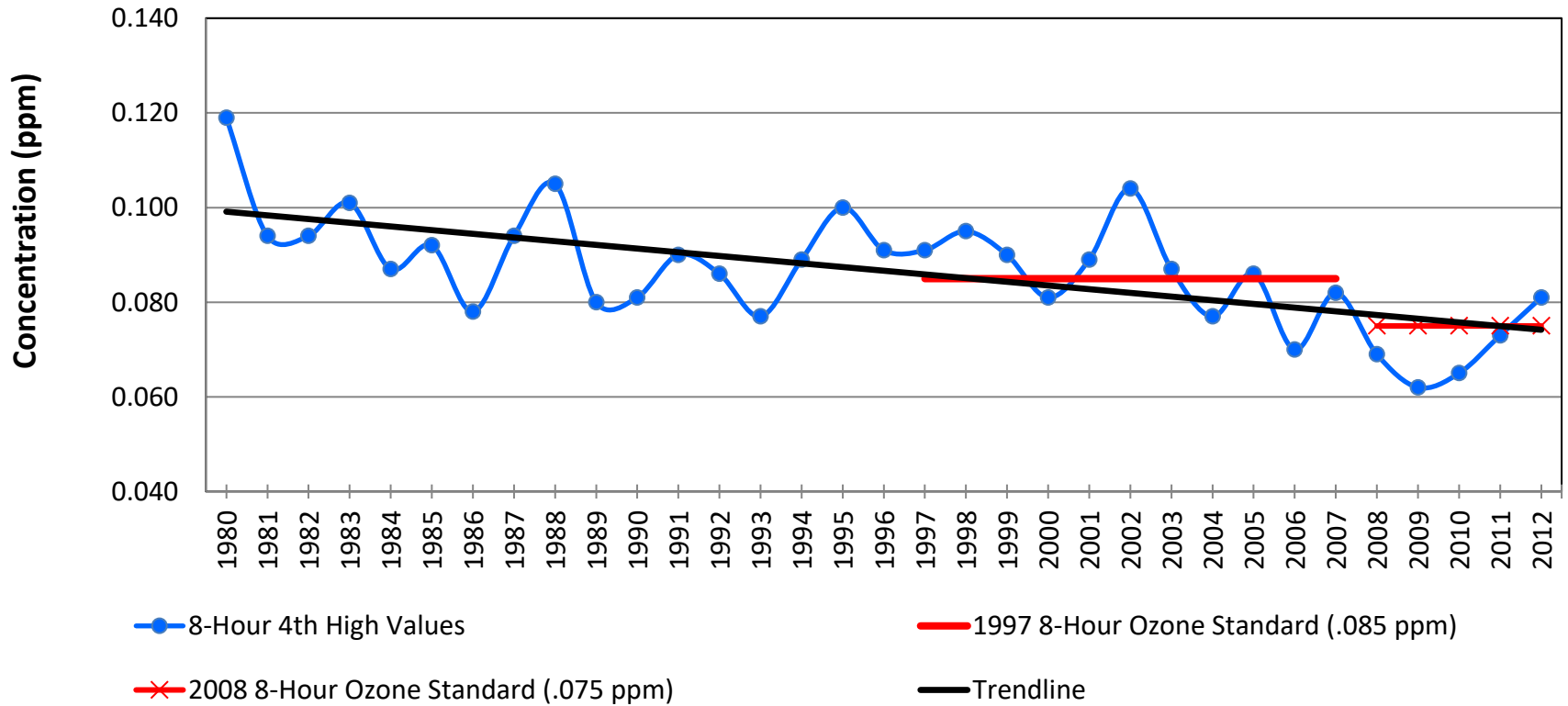


* 1-Hour Ozone Standard Revoked in 2005.



Ozone

8-Hour Ozone 4th High Values North Central Indiana

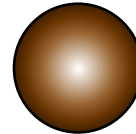
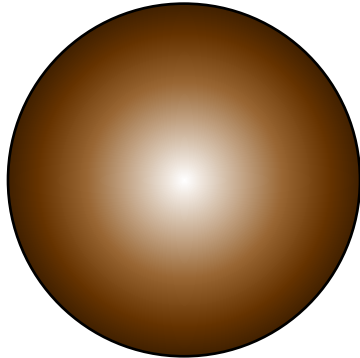


* 8-Hour Ozone Standard Established in 1997.



Changing Particulate Standards

Name	Total Suspended Particle (TSP)	PM ₁₀	PM _{2.5}
Dates	1970-1987	1983-Present	1999-Present
Regulated Size	30 μm	10 μm	2.5 μm
24-Hour Standard	260	150	65 (1999-2005) 35 (2006-Present)
Annual Standard	75	50	15

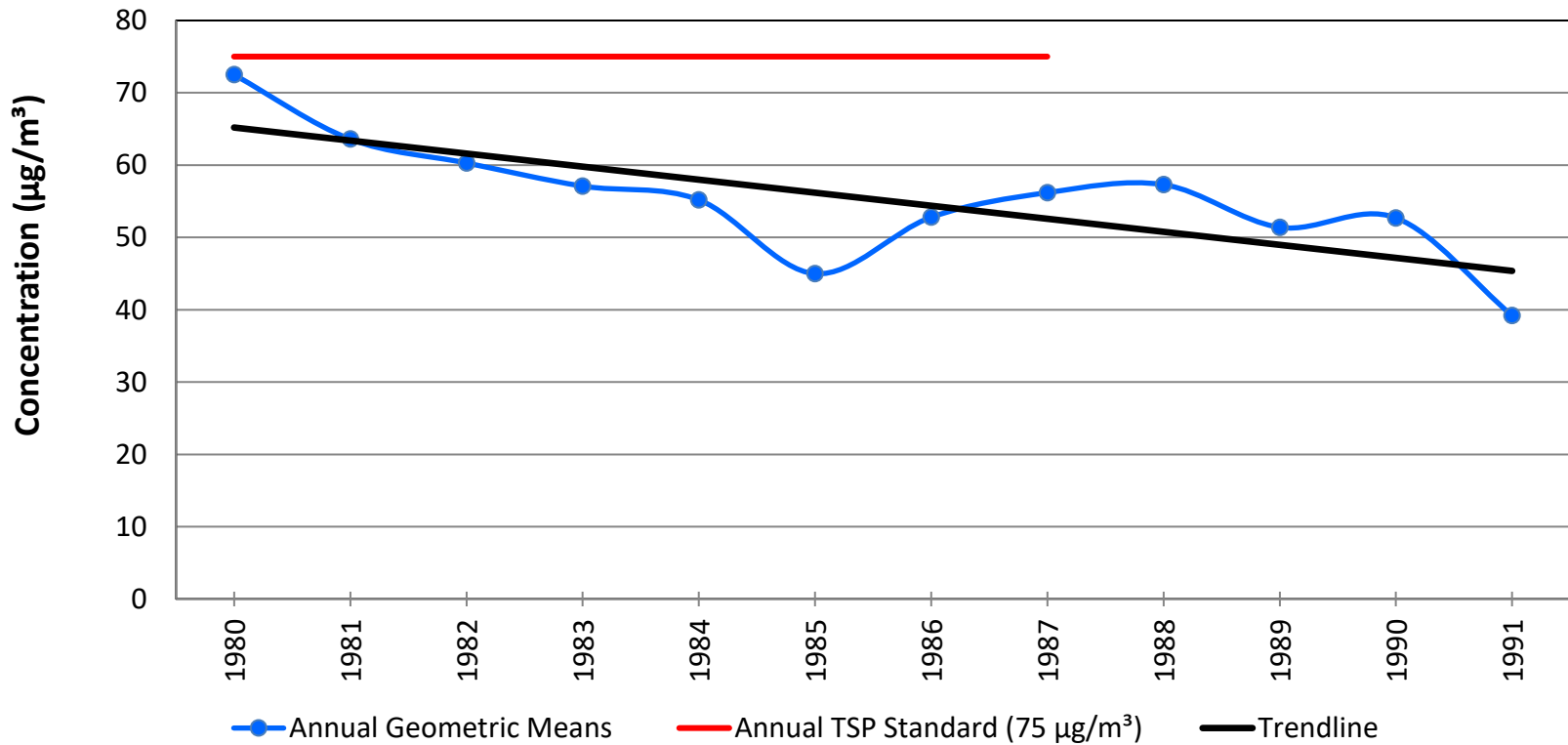


*μm = micrograms



Particulate Matter

Annual Geometric Mean TSP Values North Central Indiana

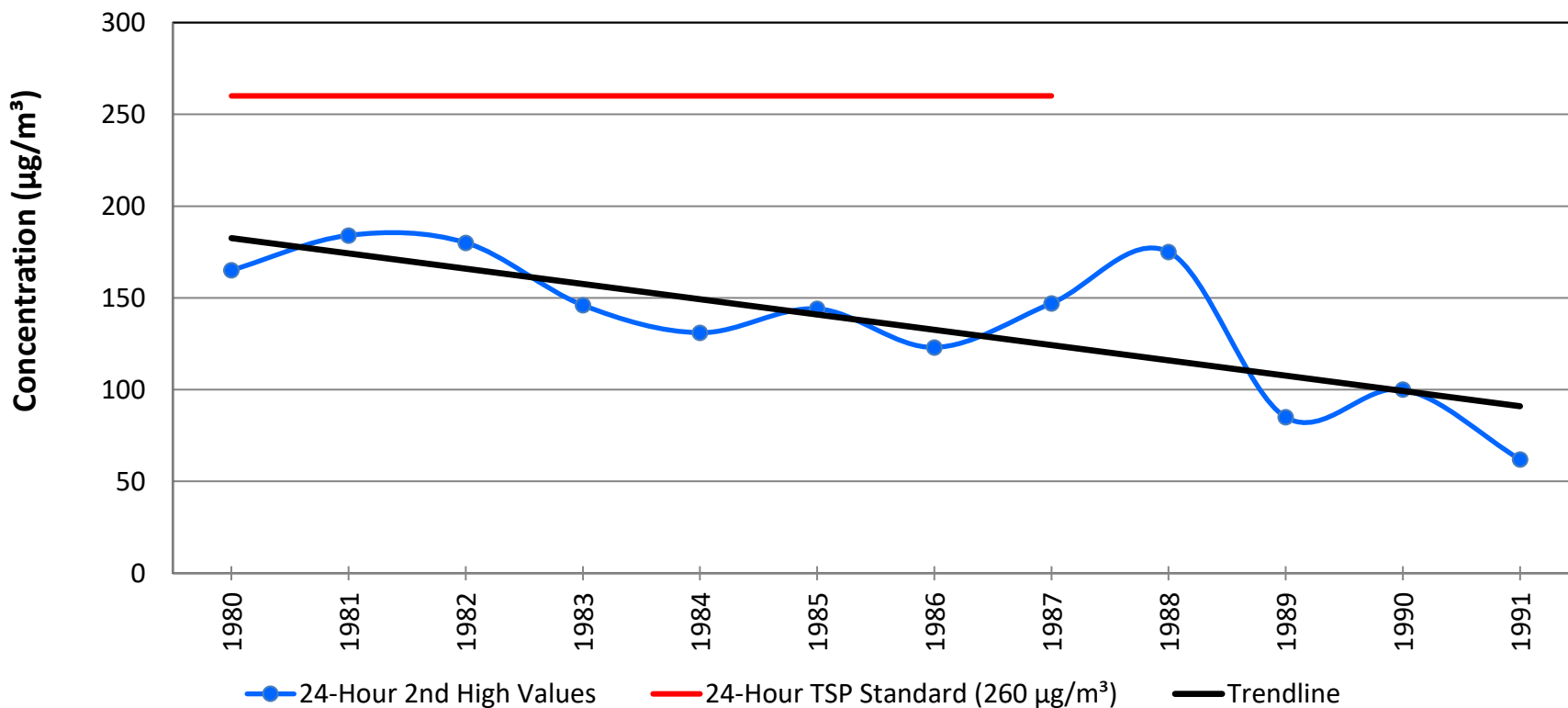


*Annual TSP Standard Revoked in 1987.



Particulate Matter

24-Hour TSP 2nd High Values North Central Indiana

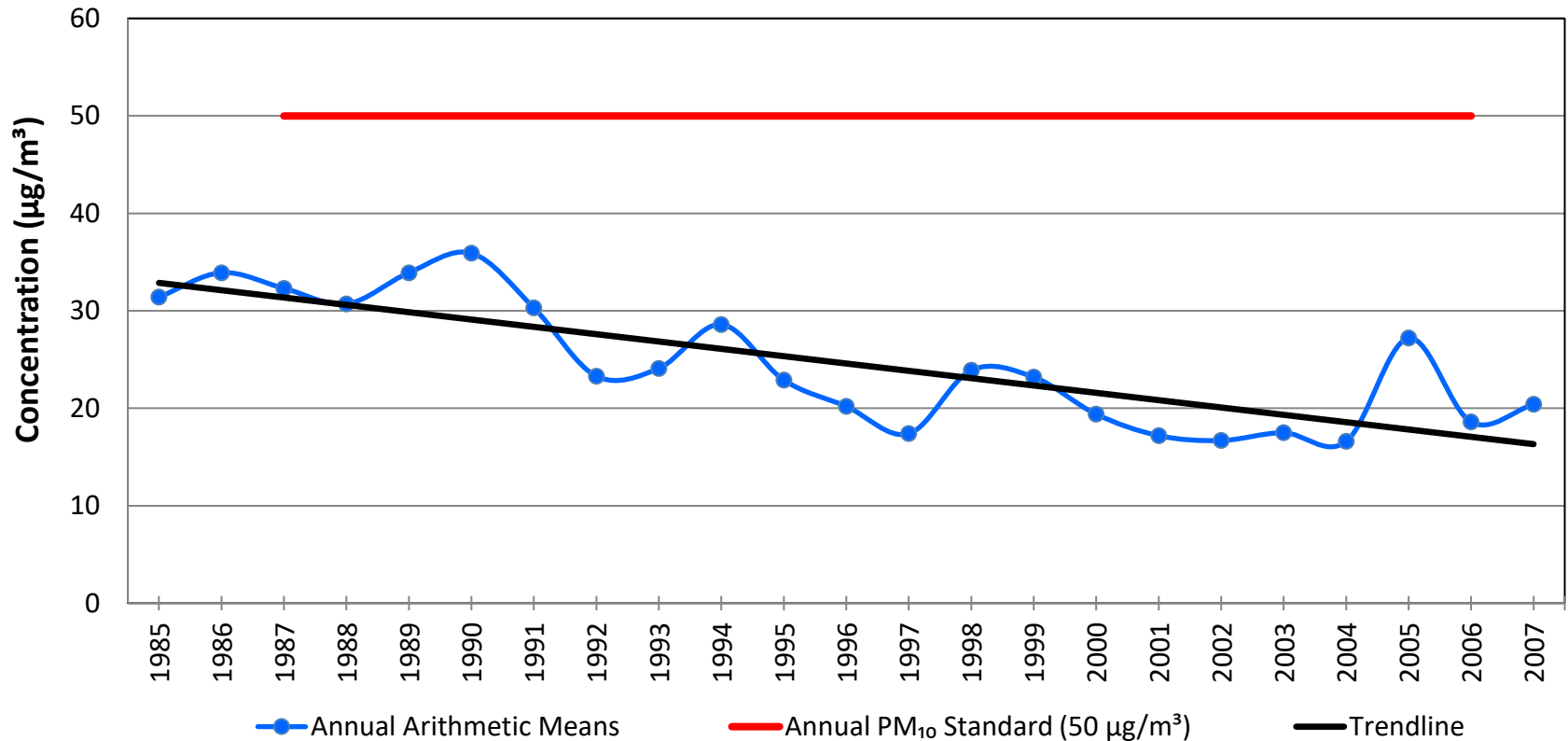


*24-Hour TSP Standard Revoked in 1987.



Particulate Matter

Annual Arithmetic Mean PM₁₀ Values North Central Indiana

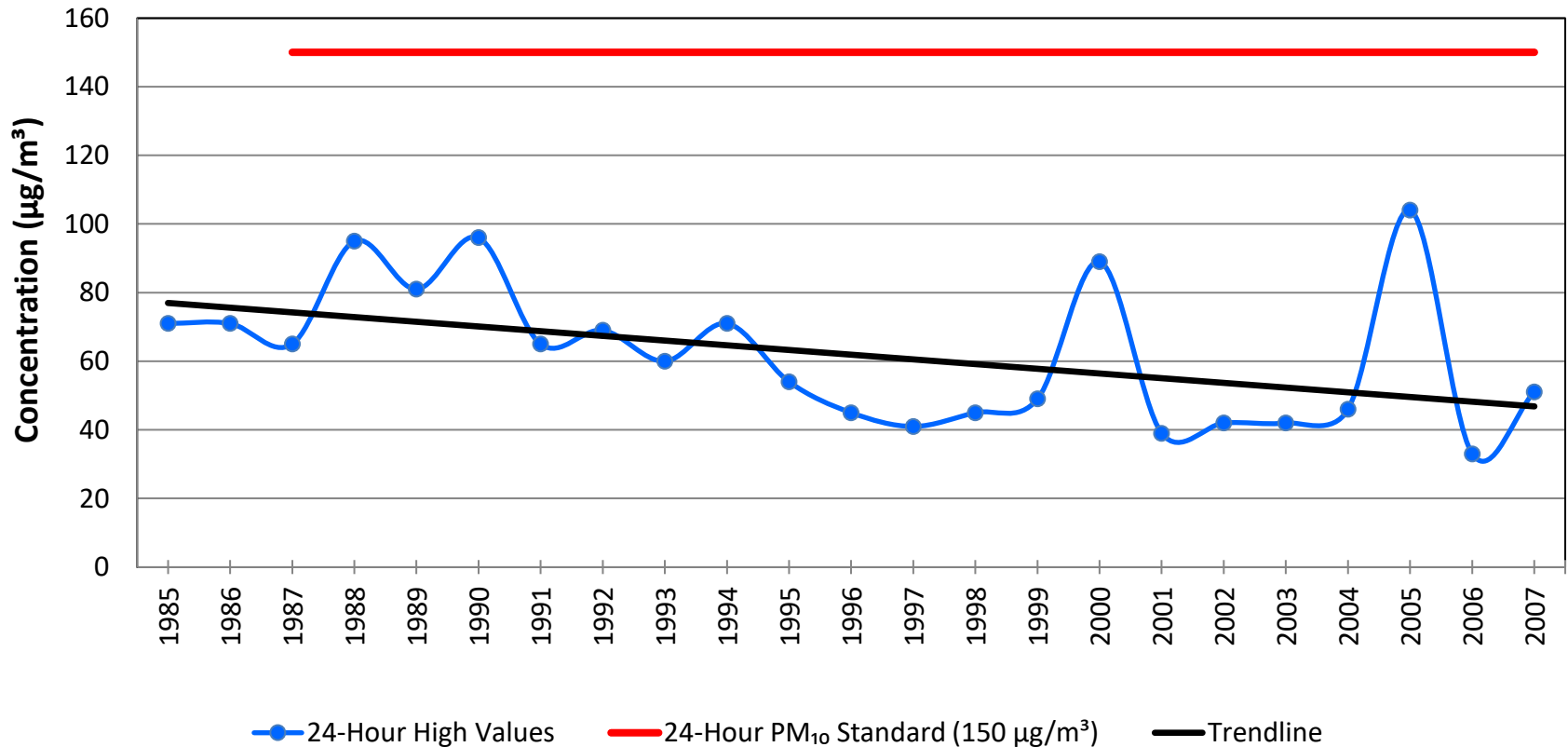


*Annual PM₁₀ Standard Established in 1987 and Revoked in 2006.



Particulate Matter

24-Hour PM₁₀ High Values North Central Indiana

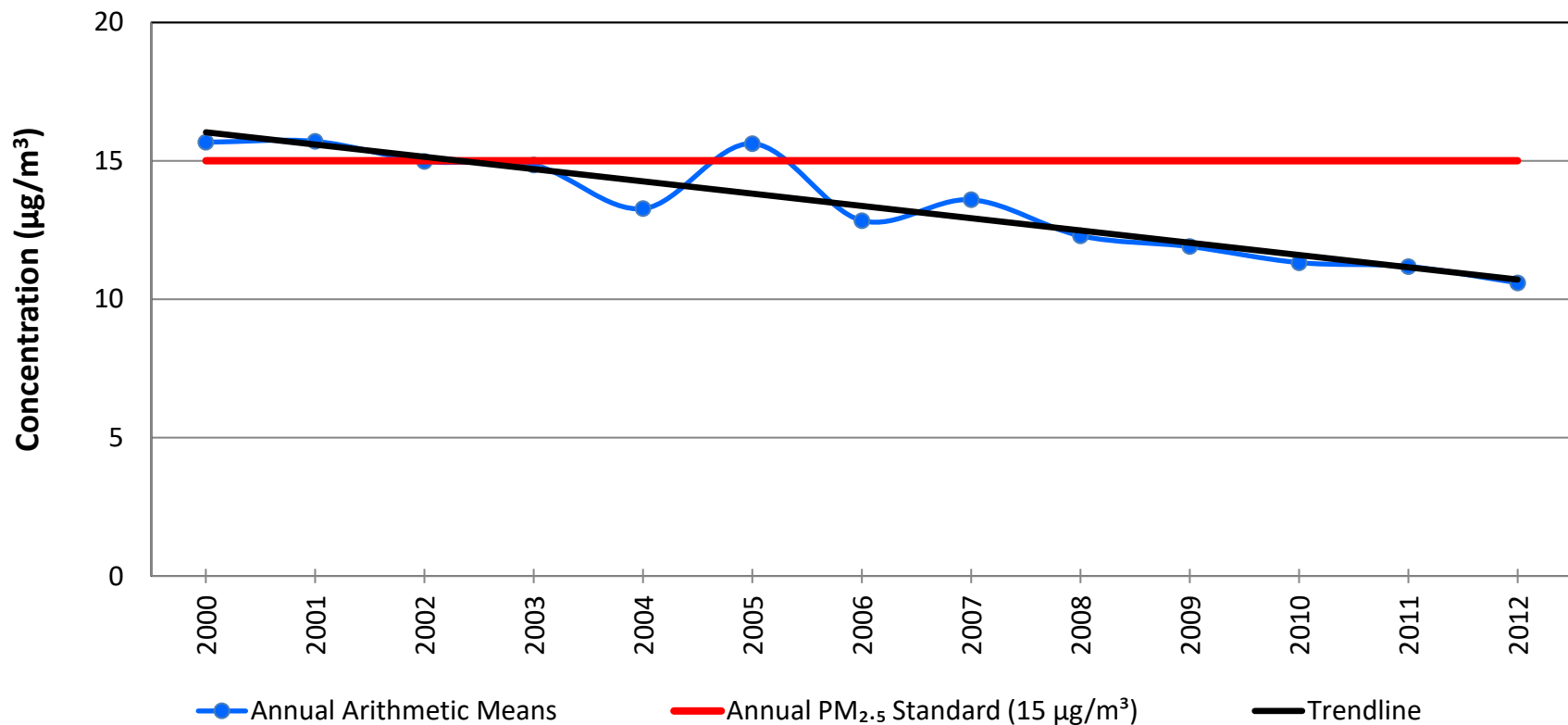


*24-Hour PM₁₀ Standard Established in 1987.



Particulate Matter

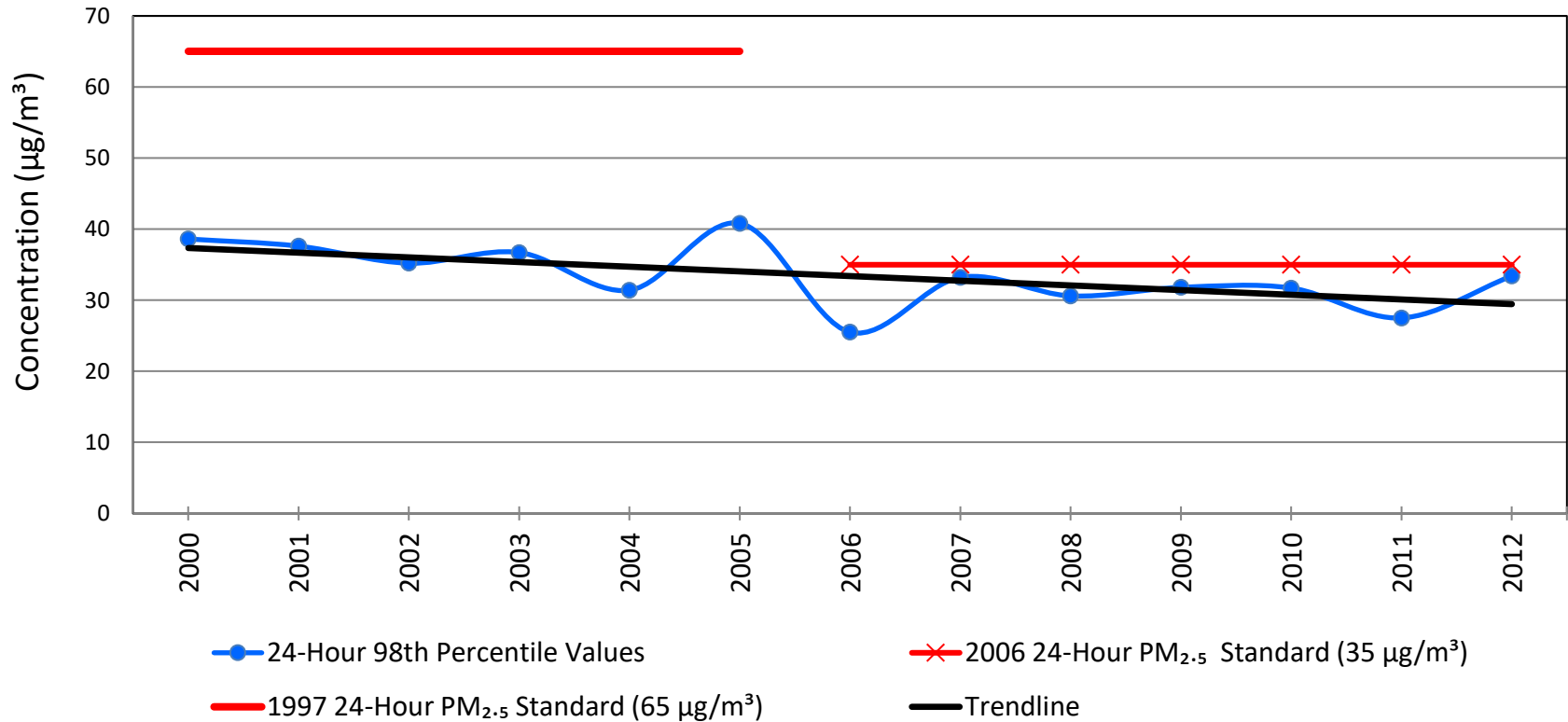
Annual Arithmetic Mean PM_{2.5} Values
North Central Indiana





Particulate Matter

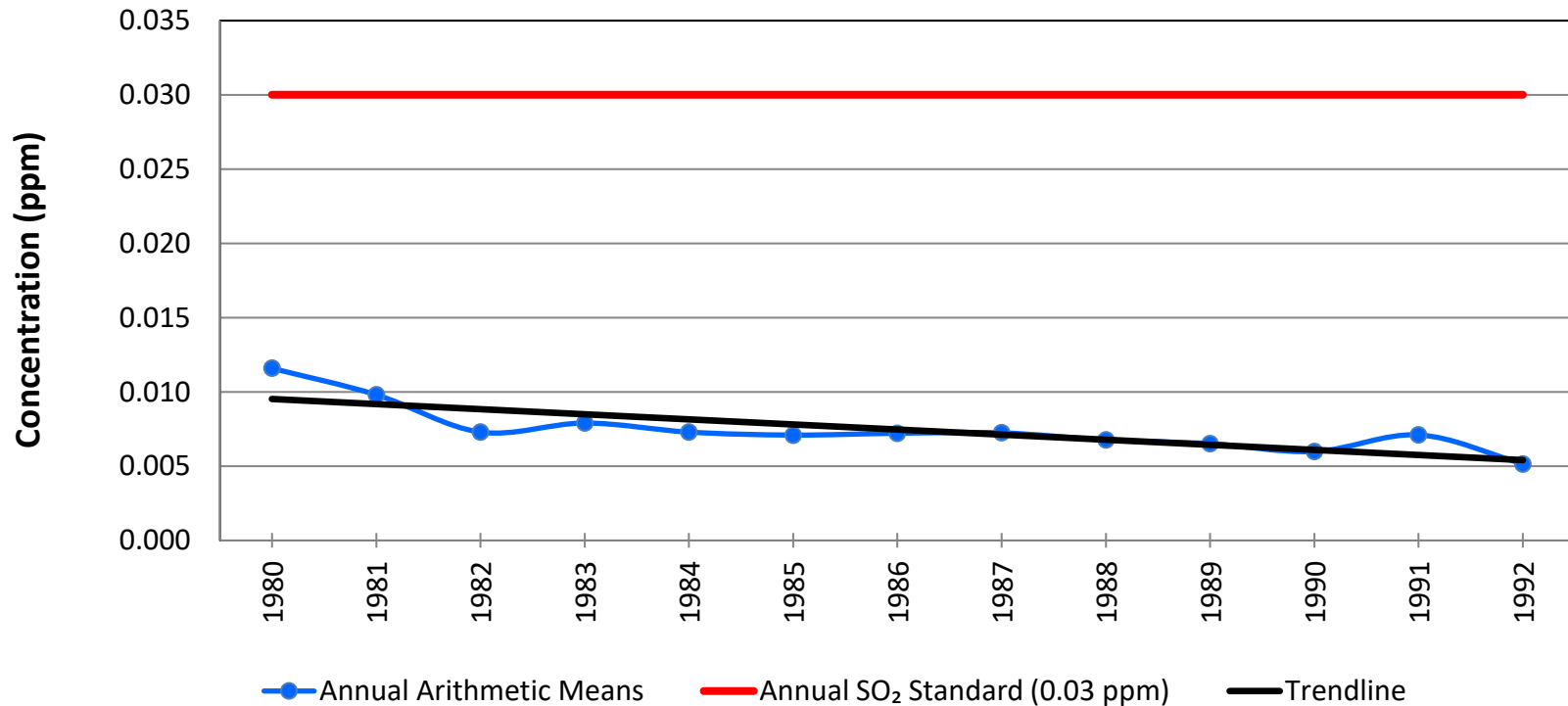
24-Hour PM_{2.5} 98th Percentile Values North Central Indiana





Sulfur Dioxide

Annual Arithmetic Mean SO₂ Values North Central Indiana

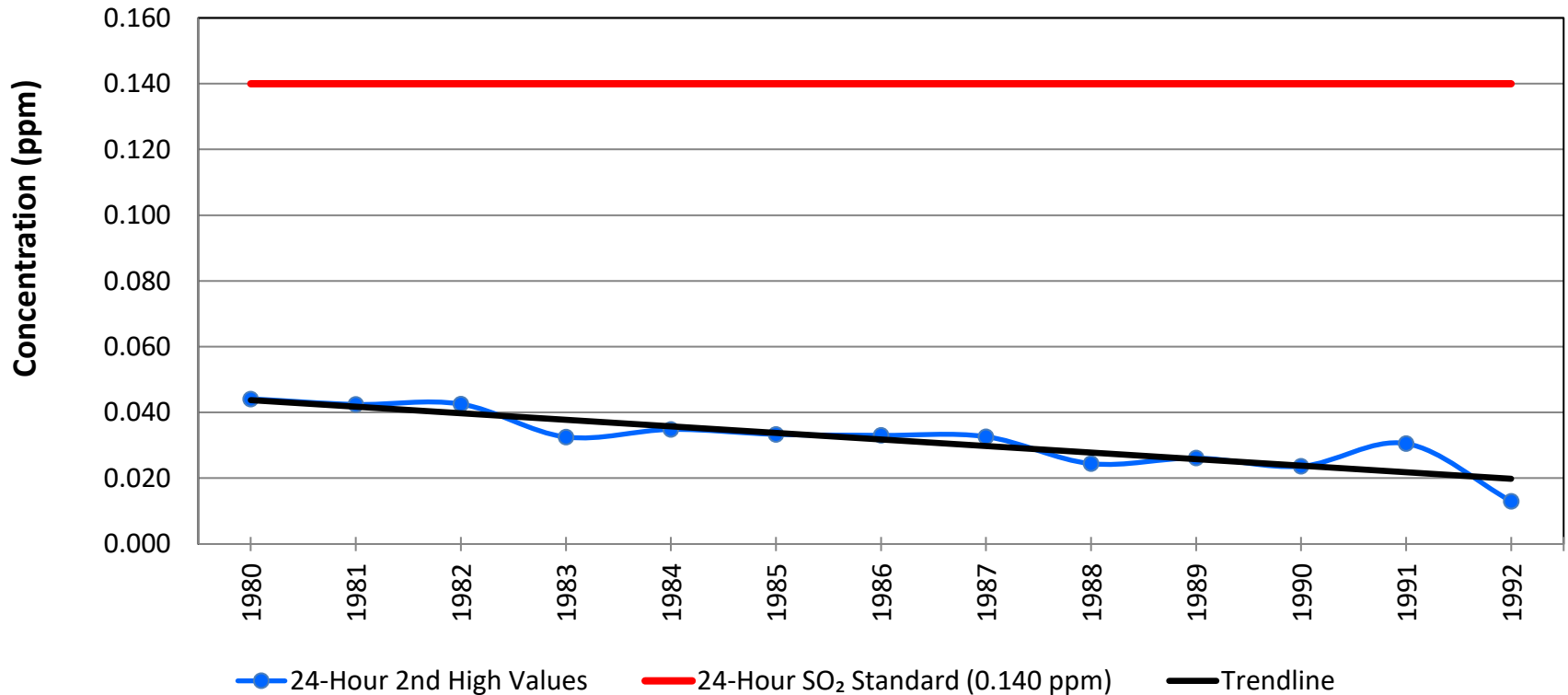


*Annual SO₂ Standard Revoked in 2010.



Sulfur Dioxide

24-Hour SO₂ 2nd High Values North Central Indiana



* 24-Hour SO₂ Standard Revoked in 2010.



Air Quality and You

- To learn more about your air quality and what you can do to help, visit:

Smogwatch.IN.gov

- To acquire additional information about air quality in Indiana and IDEM's role, visit:

www.idem.IN.gov



Contact Information for IDEM's Office of Air Quality

- To call please dial:

(317) 233-0178

- To write, please use this mailing address:

IDEM, Office of Air Quality

100 North Senate Avenue

Indianapolis, IN 46204