



DIVISION OF FAMILY RESOURCES

Monthly Management Report September 2018

State of Indiana

Eric Holcomb
Governor

Family and Social Services Administration

Jennifer Walthall, M.D.
Secretary

Division of Family Resources

Adrienne Shields
Director

For questions regarding data on this report contact:
office.Communications@fssa.IN.gov



State of Indiana

Published October 2018



DIVISION OF FAMILY RESOURCES

Monthly Management Report

Reporting Month: September 2018

Location: Statewide

TEMPORARY ASSISTANCE FOR NEEDY FAMILIES (TANF)

Child-Only and One-Parent Families	Sep 30, 2018	August 2018	September 2017	Annual Change
Number of families receiving TANF Grants	5,847	5,879	6,657	-12.17%
Total number of grant recipients	12,250	12,318	13,941	-12.13%
Number of adult grant recipients	1,699	1,707	1,961	-13.36%
Number of child grant recipients	10,551	10,611	11,980	-11.93%
Total payments	\$1,141,351	\$1,147,398	\$1,281,727	-10.95%
Average payment per case	\$195.20	\$195.17	\$192.54	1.38%
Average payment per recipient	\$93.17	\$93.15	\$91.94	1.34%
Number of cases with benefits reduced to zero	84	83	104	-19.23%
Number of recipients with benefits reduced to zero	180	179	217	-17.05%
Number of adult recipients with benefit reduced to zero	47	44	47	0.00%
Number of child recipients with benefit reduced to zero	133	135	170	-21.76%

Two-Parent Families	Sep 30, 2018	August 2018	September 2017	Annual Change
Number of families receiving TANF Grants	231	230	328	-29.57%
Total number of grant recipients	882	891	1,335	-33.93%
Number of adult grant recipients	309	310	480	-35.62%
Number of child grant recipients	573	581	855	-32.98%
Total payments	\$47,799	\$48,370	\$70,874	-32.56%
Average payment per case	\$206.92	\$210.30	\$216.08	-4.24%
Average payment per recipient	\$54.19	\$54.29	\$53.09	2.08%
Number of cases with benefits reduced to zero	6	5	4	50.00%
Number of recipients with benefits reduced to zero	22	18	14	57.14%
Number of adult recipients with benefit reduced to zero	9	7	6	50.00%
Number of child recipients with benefit reduced to zero	13	11	8	62.50%

Note:

All data July 2014 and following will be broken out according to the new DFR region structure effective July 1 2014.

Source:



DIVISION OF FAMILY RESOURCES

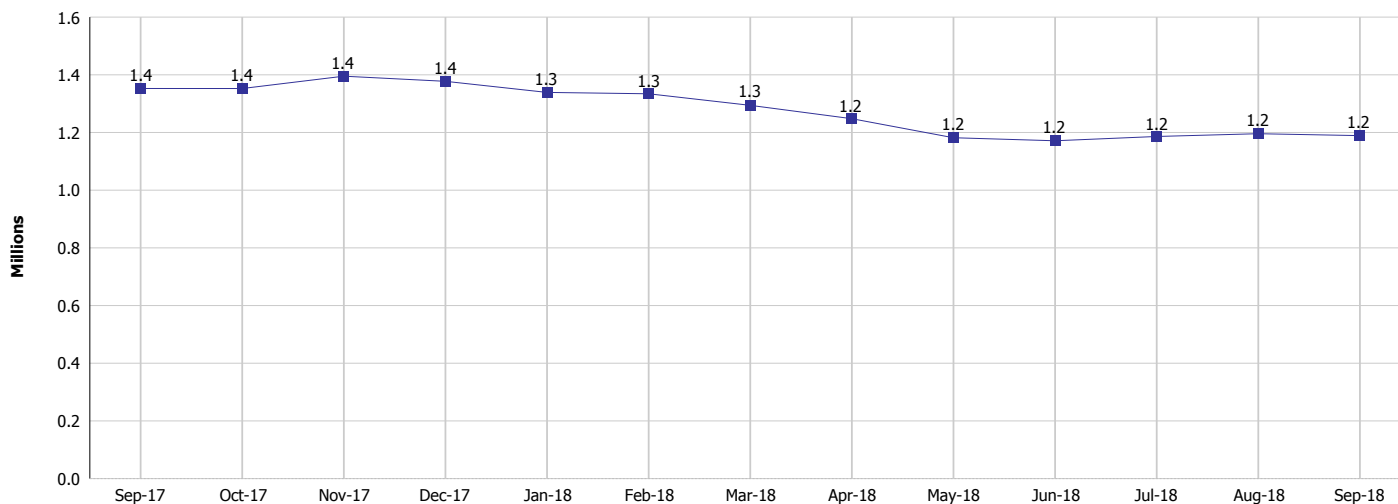
Monthly Management Report

Reporting Month: September 2018

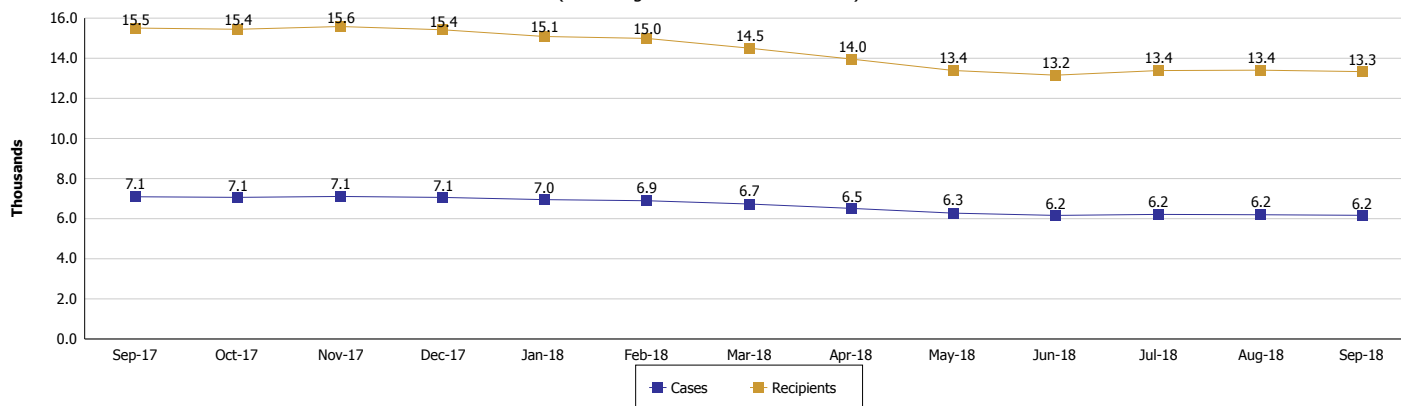
Location: Statewide

TEMPORARY ASSISTANCE FOR NEEDY FAMILIES (TANF)

TANF Cash Assistance
(TANF Regular and TANF Two-Parent)



TANF Cases and Recipients
(TANF Regular and TANF Two-Parent)



Note:

All data July 2014 and following will be broken out according to the new DFR region structure effective July 1 2014.



DIVISION OF FAMILY RESOURCES

Monthly Management Report

Reporting Month: September 2018

Location: Statewide

SUPPLEMENTAL NUTRITION ASSISTANCE PROGRAM (SNAP)

	September 2018	August 2018	September 2017	Annual Change
Total issuance	\$71,379,747	\$72,153,331	\$77,570,785	-7.98%
Number of households receiving SNAP benefits	270,223	271,644	287,971	-6.16%
Number of recipients	602,055	606,194	649,165	-7.26%
Average issuance per household	\$264.15	\$265.62	\$269.37	-1.94%
Average issuance per recipient	\$118.56	\$119.03	\$119.49	-0.78%

Note:

All data July 2014 and following will be broken out according to the new DFR region structure effective July 1 2014.

SNAP ERROR RATES

	May 2018	April 2018	March 2018	Cumulative FFY 2017
FFY Cumulative Positive Error Rate	5.02%	5.10%	4.85%	9.19%
Monthly Positive Error Rate	4.51%	6.46%	1.37%	NA
FFY Cumulative Negative Error Rate	41.29%	42.75%	43.14%	30.52%
Monthly Negative Error Rate	31.03%	40.35%	37.50%	NA

Note:

All data July 2014 and following will be broken out according to the new DFR region structure effective July 1 2014.

Notes:

Reporting periods for SNAP Error Rates reflect the review period and Federal submission deadline. The month reported above is the month in which an action was taken included in the review sample.

Positive actions are those which produced an issuance of benefits to a household. Negative actions are those which closed or denied benefits to a household.

Error Rate data is reported by the state before the federal agency has accepted and finalized the results. This rate is subject to revision based upon: completion and submission of outstanding reviews; final review corrections; and completion of previously dropped reviews. Monthly numbers are taken from end-of-month totals. The error status of cases may be changed by the State or Federal Review process, which would cause a change that might not be reflected in the previous monthly numbers.



DIVISION OF FAMILY RESOURCES

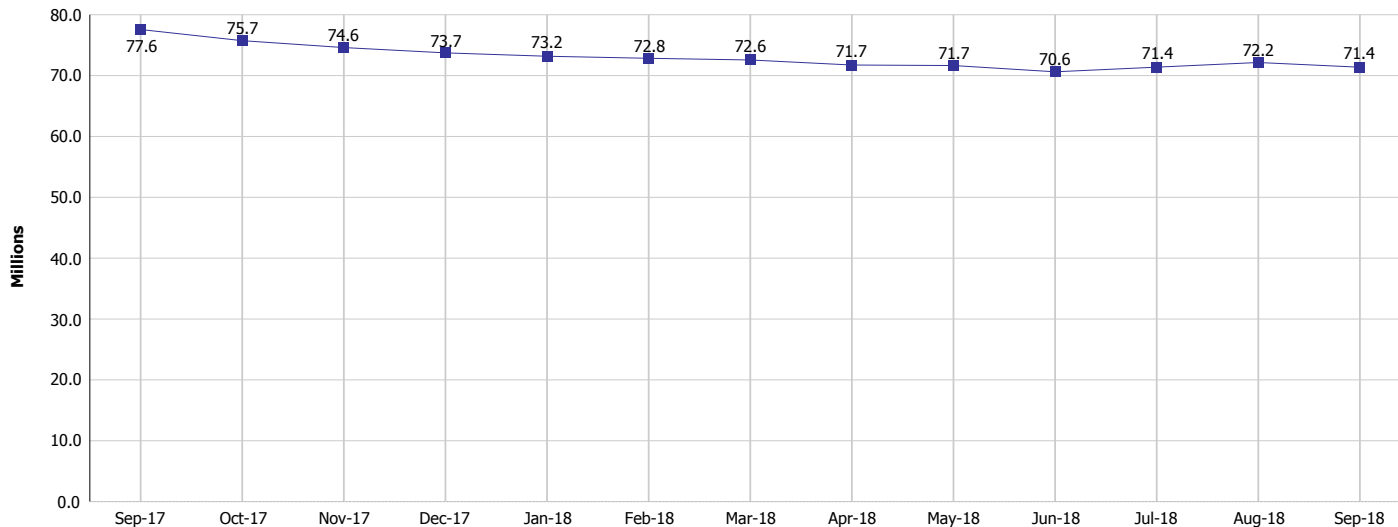
Monthly Management Report

Reporting Month: September 2018

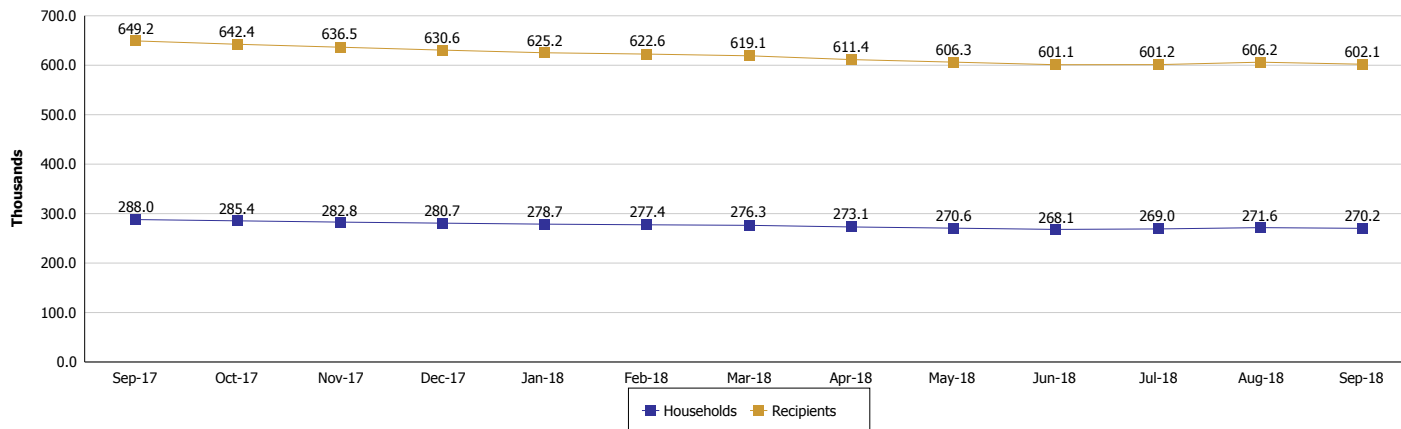
Location: Statewide

SUPPLEMENTAL NUTRITION ASSISTANCE PROGRAM (SNAP)

SNAP Issuance



SNAP Households and Recipients



Note:

All data July 2014 and following will be broken out according to the new DFR region structure effective July 1 2014.



DIVISION OF FAMILY RESOURCES

Monthly Management Report

Reporting Month: September 2018

Location: Statewide

HIP 2.0 and SNAP

	September 2018	August 2018	September 2017	Annual Change
Total HIP 2.0 Members	422,515	422,915	446,532	-5.38%
HIP Members also SNAP Recipients	145,298	144,462	152,463	-4.70%
Percentage HIP Members SNAP Recipients	34.4%	34.2%	34.1%	-4.65%
HIP Members SNAP ABAWDs	7,450	6,754	4,334	71.90%
Percentage HIP Members SNAP ABAWDs	1.8%	1.6%	1.0%	-4.65%

Note:

All data July 2014 and following will be broken out according to the new DFR region structure effective July 1 2014.



DIVISION OF FAMILY RESOURCES

Monthly Management Report

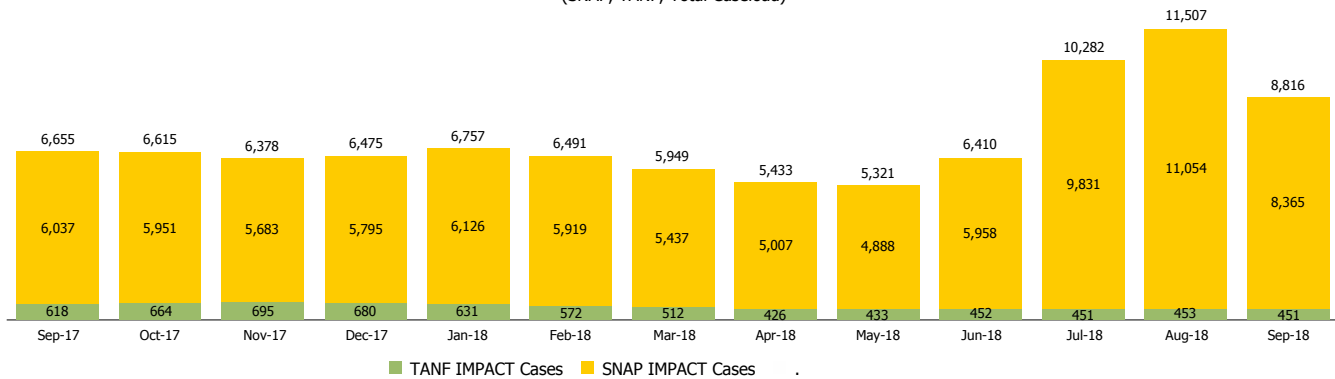
Reporting Month: September 2018

Location: Statewide

INDIANA MANPOWER PLACEMENT AND COMPREHENSIVE TRAINING (IMPACT)

	September 2018	August 2018	September 2017	Annual Change
Number of IMPACT cases	8,816	11,507	6,655	32.47%
Number of TANF IMPACT adults	451	453	618	-27.02%
Number of SNAP IMPACT Cases	8,365	11,054	6,037	38.56%
Total number of adults employed	1,432	1,747	1,250	14.56%
Number of TANF IMPACT adults newly employed (within past 30 days)	101	123	123	-17.89%
Number of SNAP IMPACT adults employed	1,331	1,624	1,127	18.10%
Total number of adults ineligible due to employment	5,353	3,956	5,892	-9.15%
Number of TANF adults ineligible due to employment	9	14	16	-43.75%
Number of SNAP adults ineligible due to employment	5,344	3,942	5,876	-9.05%

IMPACT Caseloads
(SNAP, TANF, Total Caseload)



Note:

All data July 2014 and following will be broken out according to the new DFR region structure effective July 1 2014.