



DIVISION OF FAMILY RESOURCES

Monthly Management Report October 2010

State of Indiana
Mitchell E. Daniels, Jr.
Governor

**Family and Social Services
Administration**
Anne W. Murphy
Secretary

**Division of Family
Resources**
Mike Carr
Interim Director

For questions regarding data on this report contact:
office.Communications@fssa.IN.gov



State of Indiana

Published December 2010



DIVISION OF FAMILY RESOURCES

Monthly Management Report

Reporting Month: October 2010

Location: Statewide

TEMPORARY ASSISTANCE FOR NEEDY FAMILIES (TANF)

TANF - REGULAR	October 2010	September 2010	October 2009	Annual Change
Number of families receiving TANF Grants	30,545	31,492	33,006	-7.46%
Total number of grant recipients	77,619	80,175	85,130	-8.82%
Number of adult grant recipients	22,968	23,896	25,528	-10.03%
Number of child grant recipients	54,651	56,279	59,602	-8.31%
Total payments	\$6,360,739	\$6,625,602	\$6,985,156	-8.94%
Average payment per case	\$208.24	\$210.39	\$211.63	-1.60%
Average payment per recipient	\$81.95	\$82.64	\$82.05	-0.13%
Number of cases with benefits reduced to zero	2,747	2,702	2,878	-4.55%
Number of recipients with benefits reduced to zero	7,560	7,411	8,126	-6.97%
Number of adult recipients with benefit reduced to zero	2,542	2,483	2,697	-5.75%
Number of child recipients with benefit reduced to zero	5,018	4,928	5,429	-7.57%

TANF - UNEMPLOYED PARENT	October 2010	September 2010	October 2009	Annual Change
Number of families receiving TANF Grants	3,813	4,222	4,800	-20.56%
Total number of grant recipients	15,162	16,913	19,296	-21.42%
Number of adult grant recipients	6,853	7,634	8,742	-21.61%
Number of child grant recipients	8,309	9,279	10,554	-21.27%
Total payments	\$1,029,041	\$1,166,609	\$1,335,677	-22.96%
Average payment per case	\$269.88	\$276.32	\$278.27	-3.01%
Average payment per recipient	\$67.87	\$68.98	\$69.22	-1.95%
Number of cases with benefits reduced to zero	575	535	533	7.88%
Number of recipients with benefits reduced to zero	2,437	2,231	2,213	10.12%
Number of adult recipients with benefit reduced to zero	1,096	1,015	1,027	6.72%
Number of child recipients with benefit reduced to zero	1,341	1,216	1,186	13.07%



DIVISION OF FAMILY RESOURCES

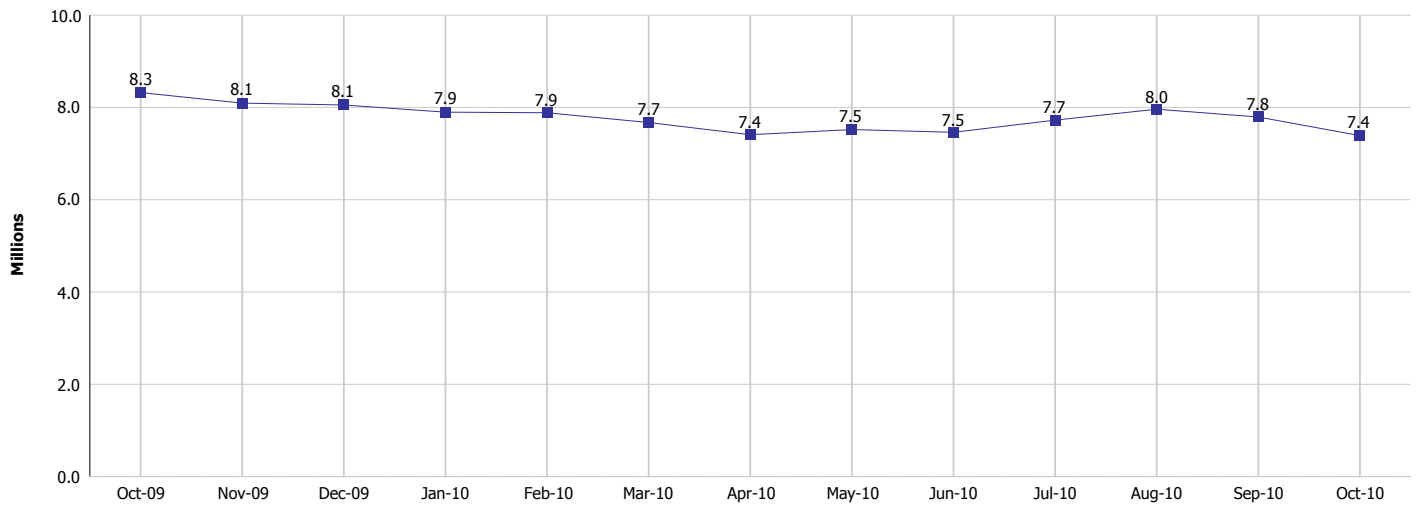
Monthly Management Report

Reporting Month: October 2010

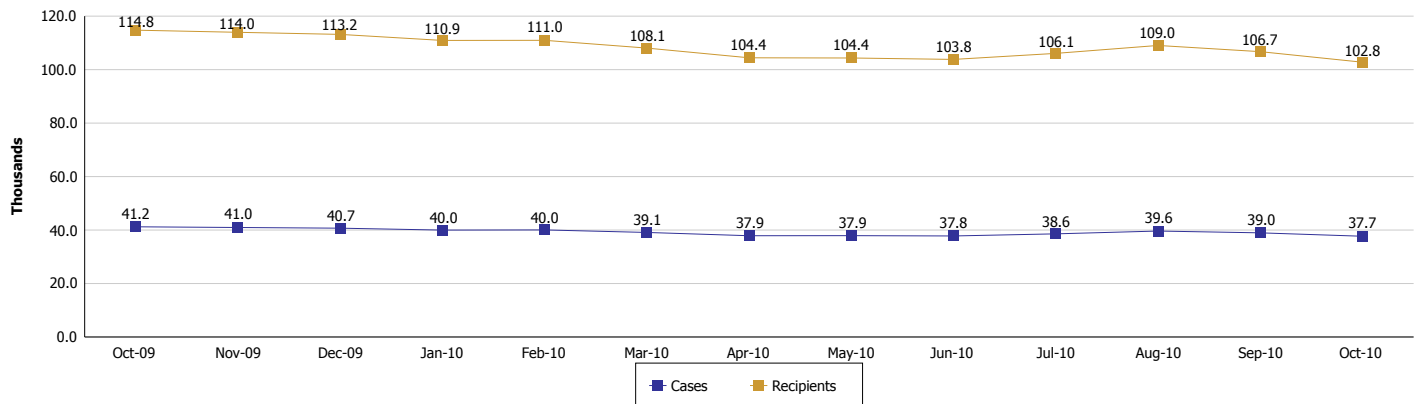
Location: Statewide

TEMPORARY ASSISTANCE FOR NEEDY FAMILIES (TANF)

TANF Cash Assistance
(TANF Regular and TANF UP)



TANF Cases and Recipients
(TANF Regular and TANF UP)





DIVISION OF FAMILY RESOURCES

Monthly Management Report

Reporting Month: October 2010

Location: Statewide

SUPPLEMENTAL NUTRITION ASSISTANCE PROGRAM (SNAP)

	October 2010	September 2010	October 2009	Annual Change
Total issuance	\$113,973,776	\$114,310,956	\$103,480,403	10.14%
Number of households receiving SNAP benefits	370,885	368,888	329,534	12.55%
Number of recipients	860,953	858,026	774,849	11.11%
Average issuance per household	\$307.30	\$309.88	\$314.02	-2.14%
Average issuance per recipient	\$132.38	\$133.23	\$133.55	-0.87%

SNAP ERROR RATES

	May 2010	April 2010	March 2010	Cumulative FFY 2009
FFY Cumulative Positive Error Rate	3.01%	3.44%	3.53%	7.02%
Monthly Positive Error Rate	0.34%	2.90%	3.89%	NA
FFY Cumulative Negative Error Rate	2.47%	2.61%	2.59%	13.65%
Monthly Negative Error Rate	1.43%	2.74%	1.22%	NA

Notes:

Reporting periods for SNAP Error Rates reflect the review period and Federal submission deadline. The month reported above is the month in which an action was taken included in the review sample.

Positive actions are those which produced an issuance of benefits to a household. Negative actions are those which closed or denied benefits to a household.

Error Rate data is reported by the state before the federal agency has accepted and finalized the results. This rate is subject to revision. Monthly numbers are taken from the end of the month totals. Error status of cases may be changed by either State or Federal Review process, which would cause a change that might not be reflected in the previous monthly numbers.



DIVISION OF FAMILY RESOURCES

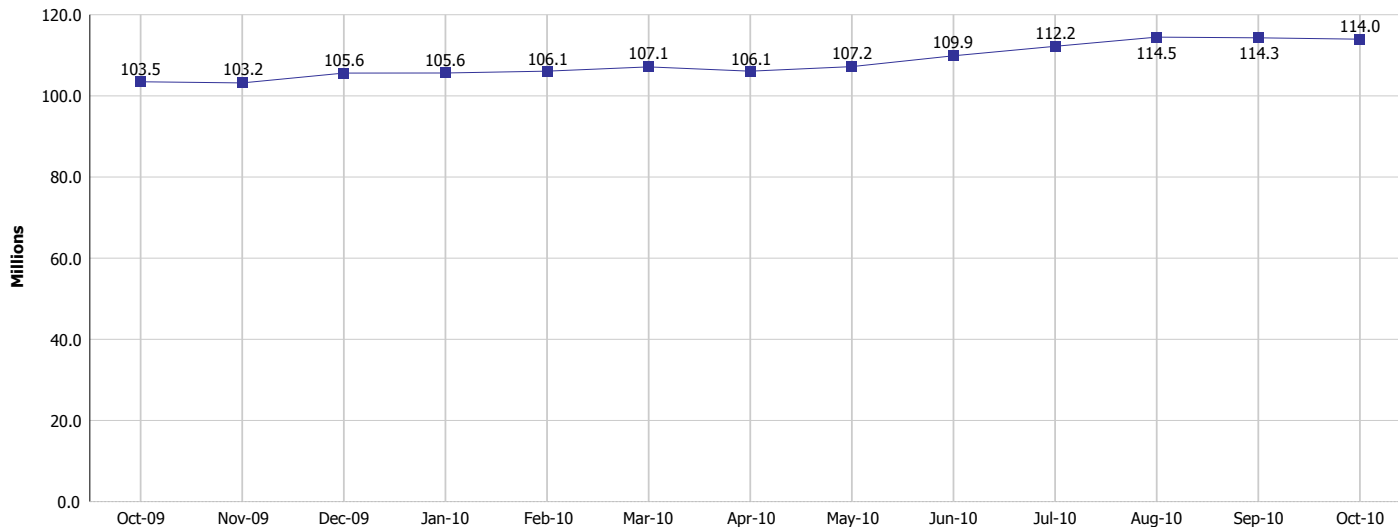
Monthly Management Report

Reporting Month: October 2010

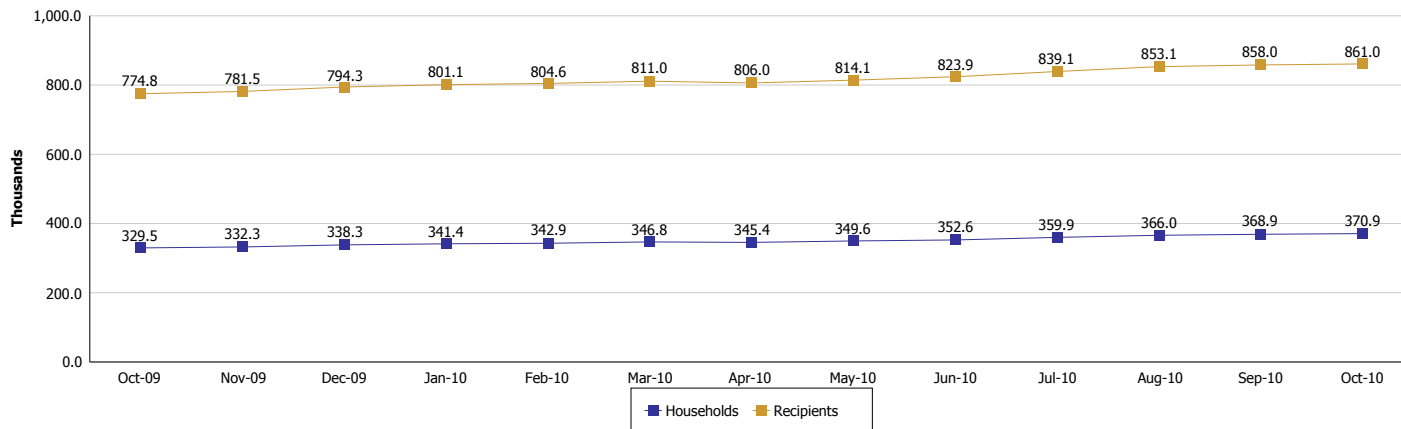
Location: Statewide

SUPPLEMENTAL NUTRITION ASSISTANCE PROGRAM (SNAP)

SNAP Issuance



SNAP Households and Recipients





DIVISION OF FAMILY RESOURCES

Monthly Management Report

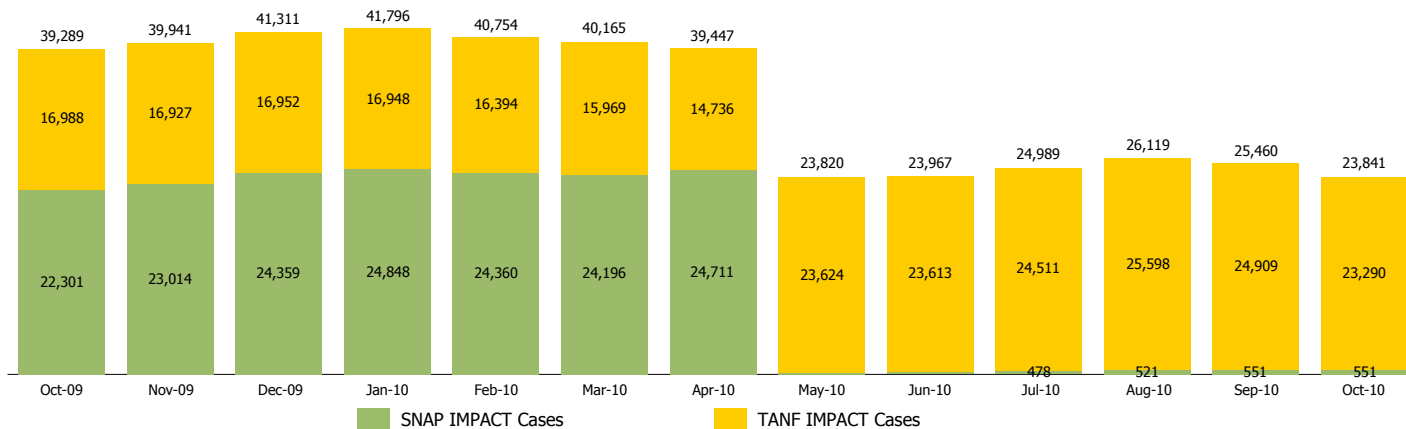
Reporting Month: October 2010

Location: Statewide

INDIANA MANPOWER PLACEMENT AND COMPREHENSIVE TRAINING (IMPACT)

	October 2010	September 2010	October 2009	Annual Change
Number of IMPACT cases	23,841	25,460	39,289	-39.32%
Number of TANF IMPACT Cases	23,290	24,909	16,988	37.10%
Number of SNAP IMPACT Cases	551	551	22,301	-97.53%
Total number of adults employed	1,352	1,432	3,416	-60.42%
Number of TANF IMPACT adults employed	1,259	1,357	1,277	-1.41%
Number of SNAP IMPACT adults employed	93	75	2,139	-95.65%
Total number of adults ineligible due to employment	1,798	1,715	968	85.74%
Number of TANF adults ineligible due to employment	99	84	144	-31.25%
Number of SNAP adults ineligible due to employment	1,699	1,631	824	106.19%

IMPACT Caseloads
(SNAP, TANF, Total Caseload)



Notes:

The methodology used for counting the number of TANF IMPACT cases changed in June 2010 to show all individuals referred to IMPACT for services.

Beginning with May 2010 the SNAP IMPACT program became a voluntary program. This change resulted in a substantial reduction in the number of IMPACT cases.



DIVISION OF FAMILY RESOURCES

Monthly Management Report

Reporting Month: October 2010

Location: Statewide

CHILD CARE

	October 2010	September 2010	October 2009	Annual Change
Total Subsidized Child Care Payments	\$11,813,268	\$11,588,980	\$12,350,547	-4.35%
Total Number of CCDF Children	33,075	33,077	35,140	-5.88%
Total Number of licensed Child Care Homes	3,045	3,055	3,057	-0.39%
Licensed Capacity of Child Care Homes	38,087	38,191	38,038	0.13%
Total Number of Licensed CC Centers	595	596	586	1.54%
Licensed Capacity of CC Centers	64,331	64,384	62,225	3.38%
Total Number of Registered Ministries (Capacity not Regulated)	733	728	709	3.39%