



## DIVISION OF FAMILY RESOURCES

# Monthly Management Report November 2011

**State of Indiana**  
Mitchell E. Daniels, Jr.  
Governor

**Family and Social Services  
Administration**  
Michael Gargano  
Secretary

**Division of Family  
Resources**  
Mike Carr  
Interim Director

For questions regarding data on this report contact:  
[office.Communications@fssa.IN.gov](mailto:office.Communications@fssa.IN.gov)



## State of Indiana

Published December 2011



## DIVISION OF FAMILY RESOURCES

### Monthly Management Report

Reporting Month: November 2011

Location: Statewide

#### TEMPORARY ASSISTANCE FOR NEEDY FAMILIES (TANF)

TANF - REGULAR	November 2011	October 2011	November 2010	Annual Change
Number of families receiving TANF Grants	19,929	20,459	29,511	-32.47%
Total number of grant recipients	48,873	50,271	74,641	-34.52%
Number of adult grant recipients	12,623	13,180	22,015	-42.66%
Number of child grant recipients	36,250	37,091	52,626	-31.12%
Total payments	\$3,852,799	\$4,003,667	\$6,128,342	-37.13%
Average payment per case	\$193.33	\$195.69	\$207.66	-6.90%
Average payment per recipient	\$78.83	\$79.64	\$82.10	-3.98%
Number of cases with benefits reduced to zero	1,012	1,116	2,826	-64.19%
Number of recipients with benefits reduced to zero	2,525	2,845	7,775	-67.52%
Number of adult recipients with benefit reduced to zero	795	911	2,609	-69.53%
Number of child recipients with benefit reduced to zero	1,730	1,934	5,166	-66.51%

TANF - UNEMPLOYED PARENT	November 2011	October 2011	November 2010	Annual Change
Number of families receiving TANF Grants	1,675	1,769	3,658	-54.21%
Total number of grant recipients	6,814	7,211	14,560	-53.20%
Number of adult grant recipients	2,812	2,982	6,534	-56.96%
Number of child grant recipients	4,002	4,229	8,026	-50.14%
Total payments	\$395,403	\$422,742	\$987,466	-59.96%
Average payment per case	\$236.06	\$238.97	\$269.95	-12.55%
Average payment per recipient	\$58.03	\$58.62	\$67.82	-14.44%
Number of cases with benefits reduced to zero	95	134	578	-83.56%
Number of recipients with benefits reduced to zero	385	534	2,418	-84.08%
Number of adult recipients with benefit reduced to zero	155	231	1,103	-85.95%
Number of child recipients with benefit reduced to zero	230	303	1,315	-82.51%



## DIVISION OF FAMILY RESOURCES

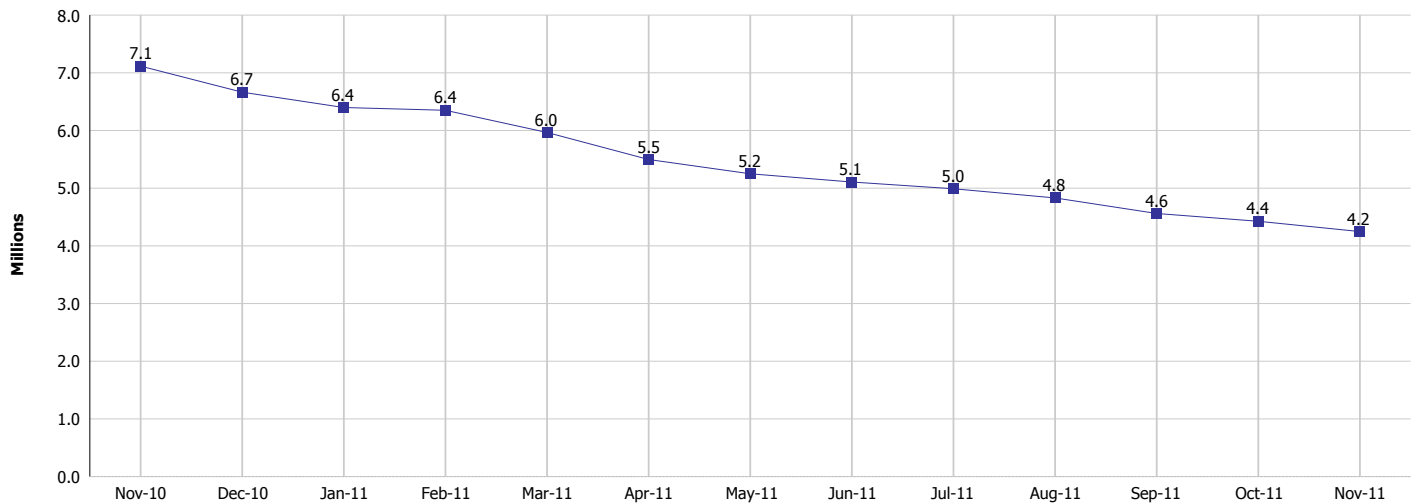
### Monthly Management Report

Reporting Month: November 2011

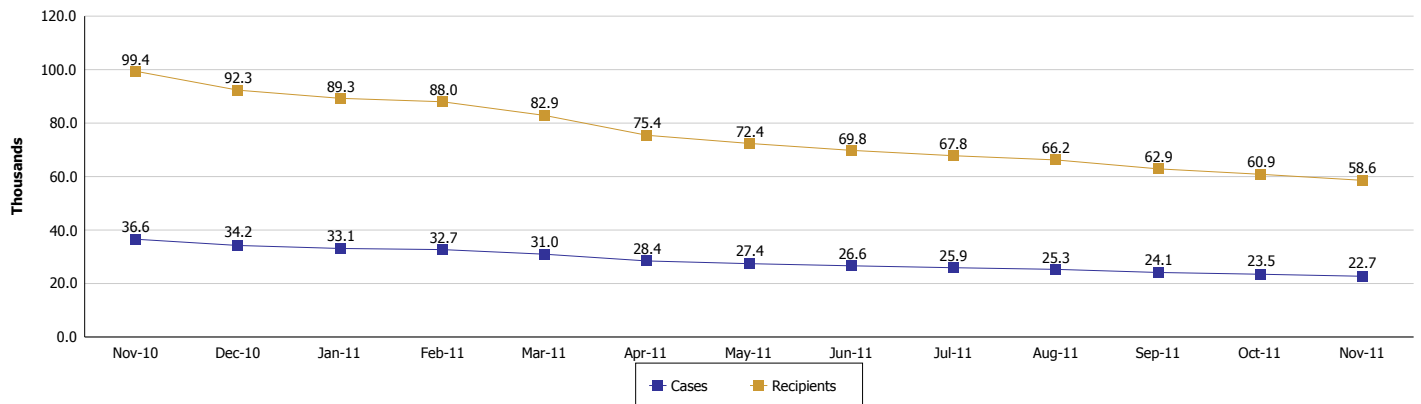
Location: Statewide

#### TEMPORARY ASSISTANCE FOR NEEDY FAMILIES (TANF)

**TANF Cash Assistance**  
(TANF Regular and TANF UP)



**TANF Cases and Recipients**  
(TANF Regular and TANF UP)





## DIVISION OF FAMILY RESOURCES

### Monthly Management Report

Reporting Month: November 2011

Location: Statewide

#### SUPPLEMENTAL NUTRITION ASSISTANCE PROGRAM (SNAP)

	November 2011	October 2011	November 2010	Annual Change
Total issuance	\$119,803,686	\$120,217,349	\$114,038,455	5.06%
Number of households receiving SNAP benefits	395,270	395,281	372,453	6.13%
Number of recipients	900,811	901,987	863,515	4.32%
Average issuance per household	\$303.09	\$304.13	\$306.18	-1.01%
Average issuance per recipient	\$133.00	\$133.28	\$132.06	0.71%

#### SNAP ERROR RATES

	July 2011	June 2011	May 2011	Cumulative FFY 2010
FFY Cumulative Positive Error Rate	3.11%	3.33%	3.54%	2.48%
Monthly Positive Error Rate	0.97%	1.57%	2.41%	NA
FFY Cumulative Negative Error Rate	3.25%	3.42%	3.39%	2.69%
Monthly Negative Error Rate	1.72%	3.70%	2.00%	NA

#### Notes:

Reporting periods for SNAP Error Rates reflect the review period and Federal submission deadline. The month reported above is the month in which an action was taken included in the review sample.

Positive actions are those which produced an issuance of benefits to a household. Negative actions are those which closed or denied benefits to a household.

Error Rate data is reported by the state before the federal agency has accepted and finalized the results. This rate is subject to revision. Monthly numbers are taken from the end of the month totals. Error status of cases may be changed by either State or Federal Review process, which would cause a change that might not be reflected in the previous monthly numbers.



# DIVISION OF FAMILY RESOURCES

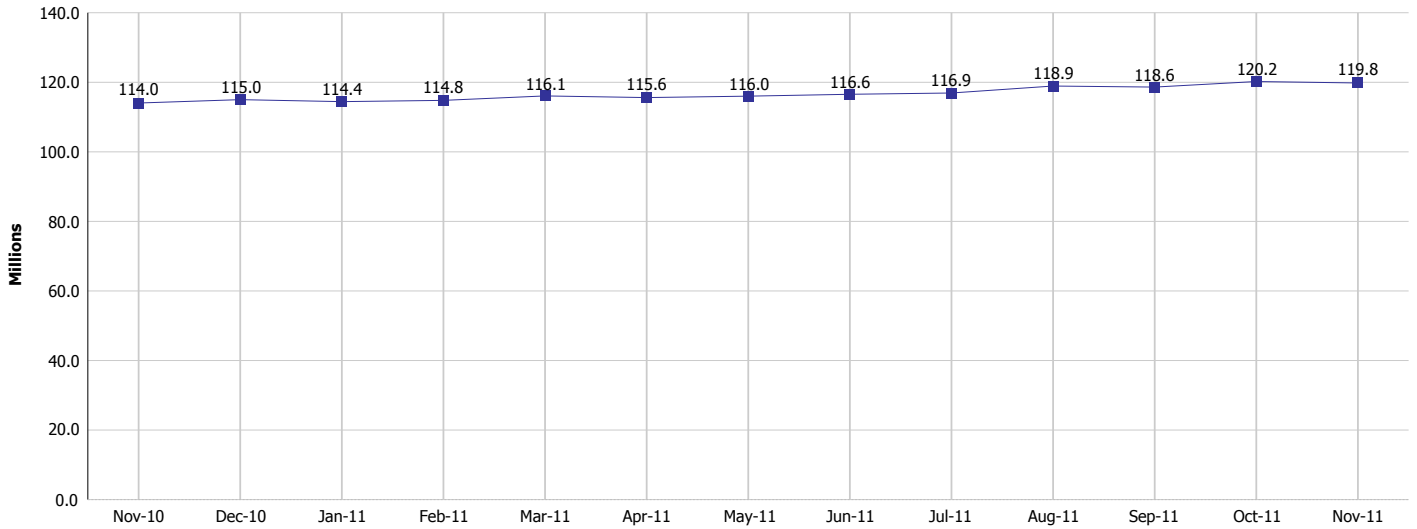
## Monthly Management Report

Reporting Month: November 2011

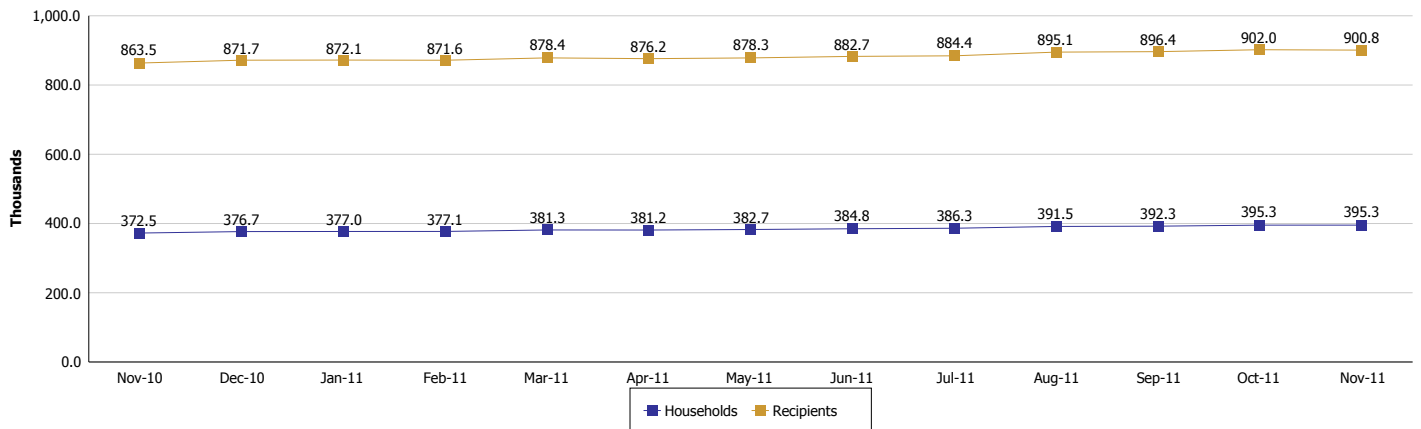
Location: Statewide

### SUPPLEMENTAL NUTRITION ASSISTANCE PROGRAM (SNAP)

#### SNAP Issuance



#### SNAP Households and Recipients





## DIVISION OF FAMILY RESOURCES

### Monthly Management Report

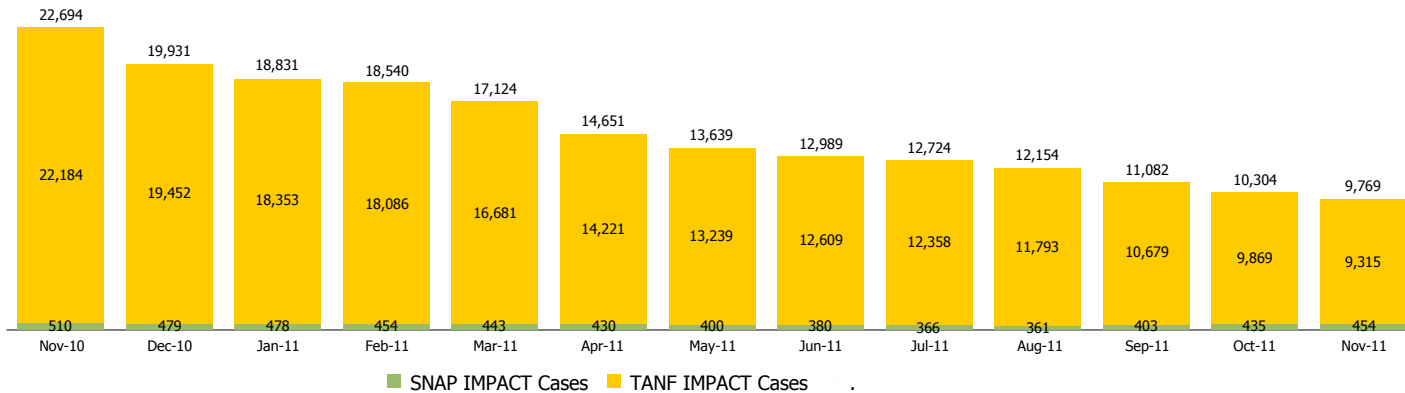
Reporting Month: November 2011

Location: Statewide

#### INDIANA MANPOWER PLACEMENT AND COMPREHENSIVE TRAINING (IMPACT)

	November 2011	October 2011	November 2010	Annual Change
Number of IMPACT cases	9,769	10,304	22,694	-56.95%
Number of TANF IMPACT Cases	9,315	9,869	22,184	-58.01%
Number of SNAP IMPACT Cases	454	435	510	-10.98%
Total number of adults employed	765	748	1,178	-35.06%
Number of TANF IMPACT adults employed	685	668	1,114	-38.51%
Number of SNAP IMPACT adults employed	80	80	64	25.00%
Total number of adults ineligible due to employment	1,866	1,755	1,644	13.50%
Number of TANF adults ineligible due to employment	49	45	130	-62.31%
Number of SNAP adults ineligible due to employment	1,817	1,710	1,514	20.01%

**IMPACT Caseloads**  
(SNAP, TANF, Total Caseload)



**Notes:**

The methodology used for counting the number of TANF IMPACT cases changed in June 2010 to show all individuals referred to IMPACT for services.

Beginning with May 2010 the SNAP IMPACT program became a voluntary program. This change resulted in a substantial reduction in the number of IMPACT cases.



## DIVISION OF FAMILY RESOURCES

### Monthly Management Report

Reporting Month: November 2011

Location: Statewide

#### CHILD CARE

	November 2011	October 2011	November 2010	Annual Change
Total Subsidized Child Care Payments	\$11,147,136	\$10,422,900	\$12,002,245	-7.12%
Total Number of CCDF Children	31,727	29,557	33,765	-6.04%
Total Number of licensed Child Care Homes	2,920	2,934	3,058	-4.51%
Licensed Capacity of Child Care Homes	36,636	36,832	38,271	-4.27%
Total Number of Licensed CC Centers	598	598	595	0.50%
Licensed Capacity of CC Centers	64,769	64,622	64,285	0.75%
Total Number of Registered Ministries (Capacity not Regulated)	738	743	741	-0.40%