



## DIVISION OF FAMILY RESOURCES

# Monthly Management Report May 2017

### State of Indiana

Eric Holcomb  
Governor

### Family and Social Services Administration

Jennifer Walthall, M.D.  
Secretary

### Division of Family Resources

Adrienne Shields  
Director

For questions regarding data on this report contact:  
[office.Communications@fssa.IN.gov](mailto:office.Communications@fssa.IN.gov)



## State of Indiana

Published June 2017



## DIVISION OF FAMILY RESOURCES

### Monthly Management Report

Reporting Month: May 2017

Location: Statewide

#### TEMPORARY ASSISTANCE FOR NEEDY FAMILIES (TANF)

Child-Only and One-Parent Families	May 31, 2017	April 2017	May 2016	Annual Change
Number of families receiving TANF Grants	6,674	6,753	7,367	-9.41%
Total number of grant recipients	13,632	13,821	15,202	-10.33%
Number of adult grant recipients	1,860	1,900	2,255	-17.52%
Number of child grant recipients	11,772	11,921	12,947	-9.08%
Total payments	\$1,262,255	\$1,278,417	\$1,379,240	-8.48%
Average payment per case	\$189.13	\$189.31	\$187.22	1.02%
Average payment per recipient	\$92.59	\$92.50	\$90.73	2.06%
Number of cases with benefits reduced to zero	113	123	196	-42.35%
Number of recipients with benefits reduced to zero	224	253	419	-46.54%
Number of adult recipients with benefit reduced to zero	47	49	106	-55.66%
Number of child recipients with benefit reduced to zero	177	204	313	-43.45%

Two-Parent Families	May 31, 2017	April 2017	May 2016	Annual Change
Number of families receiving TANF Grants	353	385	455	-22.42%
Total number of grant recipients	1,487	1,633	1,875	-20.69%
Number of adult grant recipients	538	600	713	-24.54%
Number of child grant recipients	949	1,033	1,162	-18.33%
Total payments	\$76,229	\$85,994	\$97,545	-21.85%
Average payment per case	\$215.95	\$223.36	\$214.38	0.73%
Average payment per recipient	\$51.26	\$52.66	\$52.02	-1.46%
Number of cases with benefits reduced to zero	7	8	14	-50.00%
Number of recipients with benefits reduced to zero	23	25	50	-54.00%
Number of adult recipients with benefit reduced to zero	8	10	20	-60.00%
Number of child recipients with benefit reduced to zero	15	15	30	-50.00%

**Note:**

All data July 2014 and following will be broken out according to the new DFR region structure effective July 1 2014.

Source:



## DIVISION OF FAMILY RESOURCES

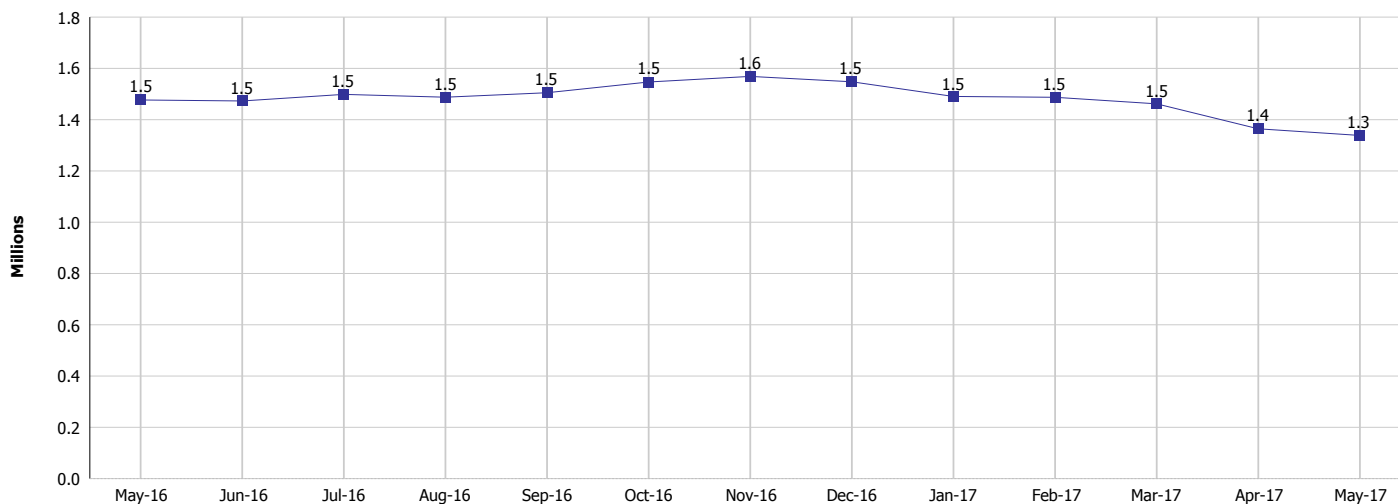
### Monthly Management Report

Reporting Month: May 2017

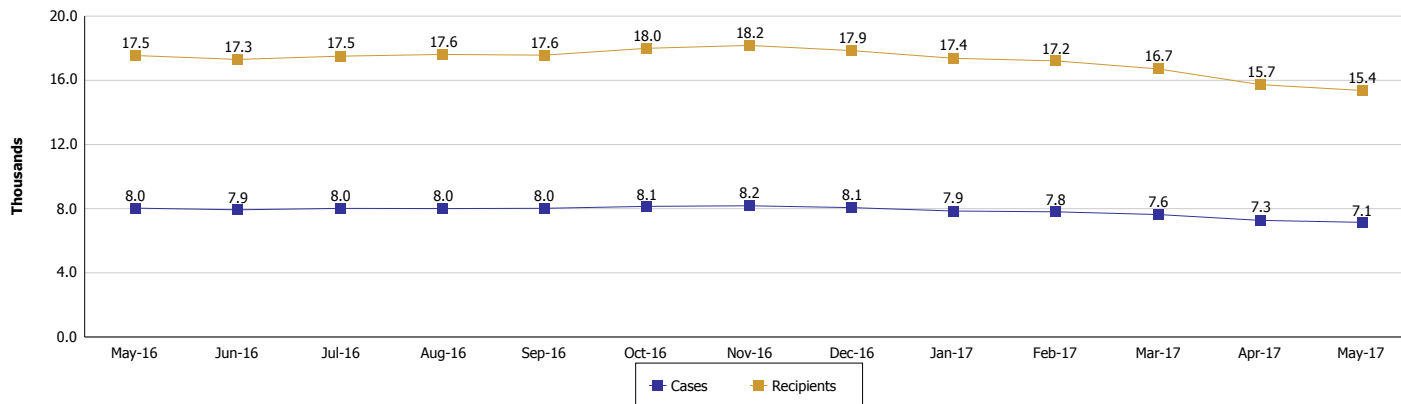
Location: Statewide

#### TEMPORARY ASSISTANCE FOR NEEDY FAMILIES (TANF)

**TANF Cash Assistance**  
(TANF Regular and TANF Two-Parent)



**TANF Cases and Recipients**  
(TANF Regular and TANF Two-Parent)



**Note:**

All data July 2014 and following will be broken out according to the new DFR region structure effective July 1 2014.



## DIVISION OF FAMILY RESOURCES

### Monthly Management Report

Reporting Month: May 2017

Location: Statewide

#### SUPPLEMENTAL NUTRITION ASSISTANCE PROGRAM (SNAP)

	May 2017	April 2017	May 2016	Annual Change
Total issuance	\$78,820,567	\$78,421,632	\$86,358,189	-8.73%
Number of households receiving SNAP benefits	291,881	293,370	319,523	-8.65%
Number of recipients	657,971	661,284	723,395	-9.04%
Average issuance per household	\$270.04	\$267.31	\$270.27	-0.08%
Average issuance per recipient	\$119.79	\$118.59	\$119.38	0.35%

**Note:**

All data July 2014 and following will be broken out according to the new DFR region structure effective July 1 2014.

#### SNAP ERROR RATES

	January 2017	December 2016	November 2016	Cumulative FFY 2016
FFY Cumulative Positive Error Rate	8.86%	8.79%	8.55%	6.94%
Monthly Positive Error Rate	9.04%	9.21%	9.29%	NA
FFY Cumulative Negative Error Rate	34.01%	32.26%	30.71%	27.12%
Monthly Negative Error Rate	39.34%	35.59%	35.94%	NA

**Note:**

All data July 2014 and following will be broken out according to the new DFR region structure effective July 1 2014.

**Notes:**

Reporting periods for SNAP Error Rates reflect the review period and Federal submission deadline. The month reported above is the month in which an action was taken included in the review sample.

Positive actions are those which produced an issuance of benefits to a household. Negative actions are those which closed or denied benefits to a household.

Error Rate data is reported by the state before the federal agency has accepted and finalized the results. This rate is subject to revision based upon: completion and submission of outstanding reviews; final review corrections; and completion of previously dropped reviews. Monthly numbers are taken from end-of-month totals. The error status of cases may be changed by the State or Federal Review process, which would cause a change that might not be reflected in the previous monthly numbers.



# DIVISION OF FAMILY RESOURCES

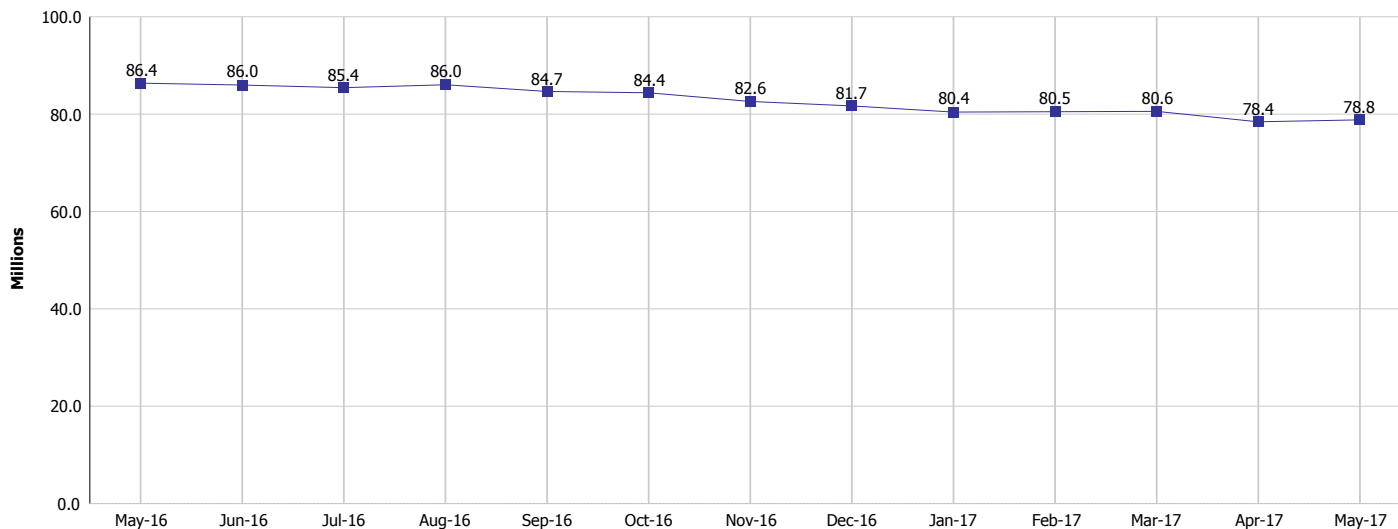
## Monthly Management Report

Reporting Month: May 2017

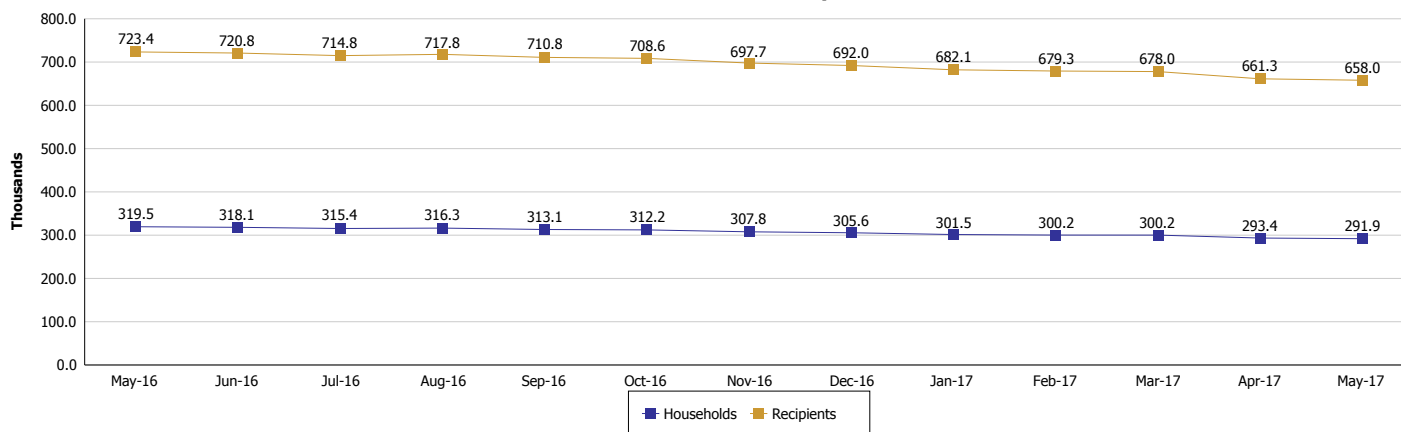
Location: Statewide

### SUPPLEMENTAL NUTRITION ASSISTANCE PROGRAM (SNAP)

#### SNAP Issuance



#### SNAP Households and Recipients



**Note:**

All data July 2014 and following will be broken out according to the new DFR region structure effective July 1 2014.



## DIVISION OF FAMILY RESOURCES

### Monthly Management Report

Reporting Month: May 2017

Location: Statewide

#### HIP 2.0 and SNAP

	May 2017	April 2017	May 2016	Annual Change
Total HIP 2.0 Members	439,529	437,293	399,388	10.05%
HIP Members also SNAP Recipients	153,711	154,320	163,010	-5.70%
Percentage HIP Members SNAP Recipients	35.0%	35.3%	40.8%	5.12%
HIP Members SNAP ABAWDs	4,323	4,664	6,081	-28.91%
Percentage HIP Members SNAP ABAWDs	1.0%	1.1%	1.5%	5.12%

**Note:**

All data July 2014 and following will be broken out according to the new DFR region structure effective July 1 2014.



## DIVISION OF FAMILY RESOURCES

### Monthly Management Report

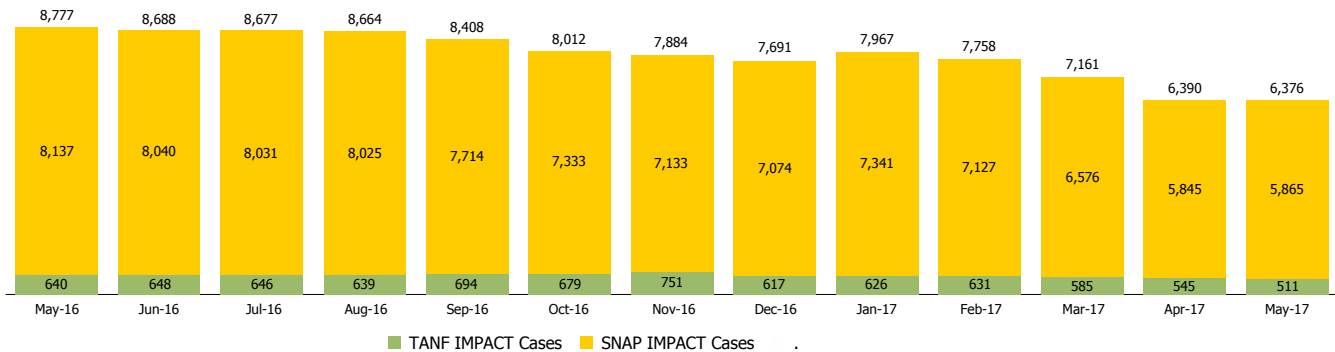
Reporting Month: May 2017

Location: Statewide

#### INDIANA MANPOWER PLACEMENT AND COMPREHENSIVE TRAINING (IMPACT)

	May 2017	April 2017	May 2016	Annual Change
Number of IMPACT cases	6,376	6,390	8,777	-27.36%
Number of TANF IMPACT adults	511	545	640	-20.16%
Number of SNAP IMPACT Cases	5,865	5,845	8,137	-27.92%
Total number of adults employed	1,270	2,411	1,408	-9.80%
Number of TANF IMPACT adults newly employed (within past 30 days)	119	221	101	17.82%
Number of SNAP IMPACT adults employed	1,151	2,190	1,307	-11.94%
Total number of adults ineligible due to employment	5,214	6,223	7,470	-30.20%
Number of TANF adults ineligible due to employment	19	17	36	-47.22%
Number of SNAP adults ineligible due to employment	5,195	6,206	7,434	-30.12%

**IMPACT Caseloads**  
(SNAP, TANF, Total Caseload)



**Note:**

All data July 2014 and following will be broken out according to the new DFR region structure effective July 1 2014.