



DIVISION OF FAMILY RESOURCES

Monthly Management Report March 2017

State of Indiana

Eric Holcomb
Governor

Family and Social Services Administration

Jennifer Walthall, M.D.
Secretary

Division of Family Resources

Adrienne Shields
Director

For questions regarding data on this report contact:
office.Communications@fssa.IN.gov



State of Indiana

Published April 2017



DIVISION OF FAMILY RESOURCES

Monthly Management Report

Reporting Month: March 2017

Location: Statewide

TEMPORARY ASSISTANCE FOR NEEDY FAMILIES (TANF)

Child-Only and One-Parent Families	Mar 31, 2017	February 2017	March 2016	Annual Change
Number of families receiving TANF Grants	7,087	7,231	7,711	-8.09%
Total number of grant recipients	14,663	15,018	15,960	-8.13%
Number of adult grant recipients	2,085	2,124	2,411	-13.52%
Number of child grant recipients	12,578	12,894	13,549	-7.17%
Total payments	\$1,361,640	\$1,374,904	\$1,442,581	-5.61%
Average payment per case	\$192.13	\$190.14	\$187.08	2.70%
Average payment per recipient	\$92.86	\$91.55	\$90.39	2.74%
Number of cases with benefits reduced to zero	121	109	208	-41.83%
Number of recipients with benefits reduced to zero	260	226	456	-42.98%
Number of adult recipients with benefit reduced to zero	51	49	105	-51.43%
Number of child recipients with benefit reduced to zero	209	177	351	-40.46%

Two-Parent Families	Mar 31, 2017	February 2017	March 2016	Annual Change
Number of families receiving TANF Grants	418	451	513	-18.52%
Total number of grant recipients	1,762	1,929	2,089	-15.65%
Number of adult grant recipients	656	721	810	-19.01%
Number of child grant recipients	1,106	1,208	1,279	-13.53%
Total payments	\$100,116	\$112,416	\$112,450	-10.97%
Average payment per case	\$239.51	\$249.26	\$219.20	9.27%
Average payment per recipient	\$56.82	\$58.28	\$53.83	5.55%
Number of cases with benefits reduced to zero	9	12	14	-35.71%
Number of recipients with benefits reduced to zero	28	40	54	-48.15%
Number of adult recipients with benefit reduced to zero	12	18	21	-42.86%
Number of child recipients with benefit reduced to zero	16	22	33	-51.52%

Note:

All data July 2014 and following will be broken out according to the new DFR region structure effective July 1 2014.

Source:



DIVISION OF FAMILY RESOURCES

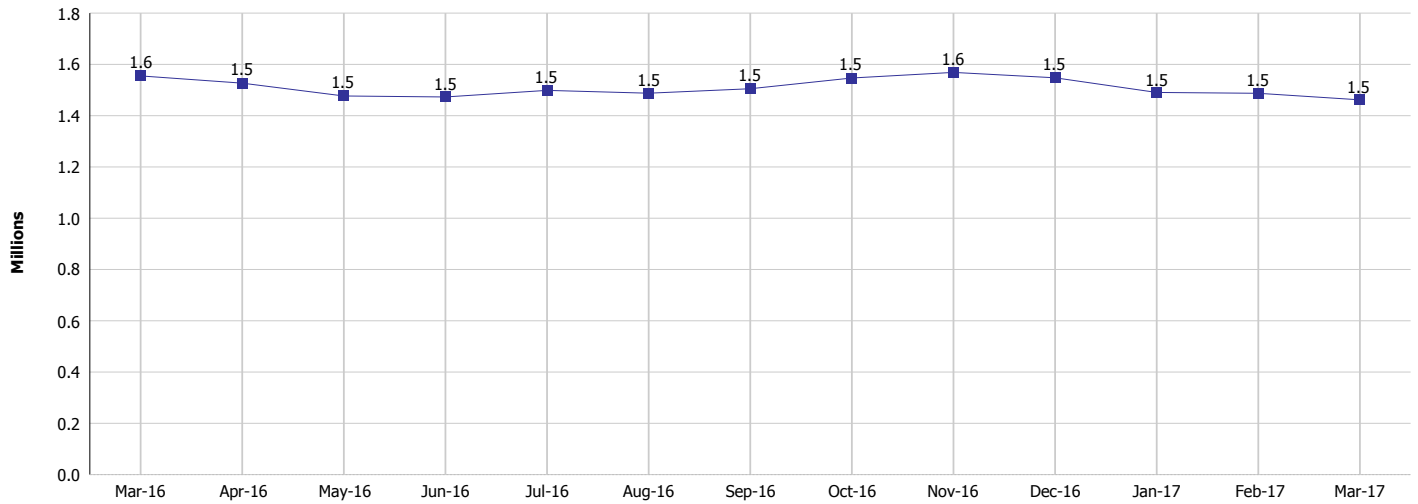
Monthly Management Report

Reporting Month: March 2017

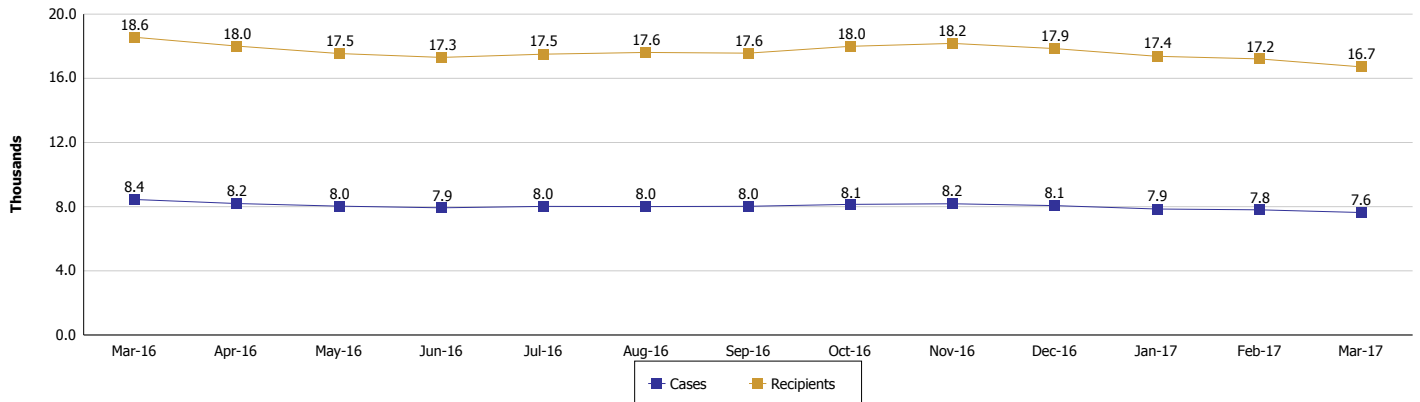
Location: Statewide

TEMPORARY ASSISTANCE FOR NEEDY FAMILIES (TANF)

TANF Cash Assistance
(TANF Regular and TANF Two-Parent)



TANF Cases and Recipients
(TANF Regular and TANF Two-Parent)



Note:

All data July 2014 and following will be broken out according to the new DFR region structure effective July 1 2014.



DIVISION OF FAMILY RESOURCES

Monthly Management Report

Reporting Month: March 2017

Location: Statewide

SUPPLEMENTAL NUTRITION ASSISTANCE PROGRAM (SNAP)

	March 2017	February 2017	March 2016	Annual Change
Total issuance	\$80,564,770	\$80,492,248	\$90,233,318	-10.72%
Number of households receiving SNAP benefits	300,159	300,225	329,904	-9.02%
Number of recipients	678,005	679,289	745,530	-9.06%
Average issuance per household	\$268.41	\$268.11	\$273.51	-1.87%
Average issuance per recipient	\$118.83	\$118.49	\$121.03	-1.82%

Note:

All data July 2014 and following will be broken out according to the new DFR region structure effective July 1 2014.

SNAP ERROR RATES

	November 2016	October 2016	Cumulative FFY 2016
FFY Cumulative Positive Error Rate	8.55%	7.81%	6.94%
Monthly Positive Error Rate	9.29%	7.81%	NA
FFY Cumulative Negative Error Rate	30.71%	25.40%	27.12%
Monthly Negative Error Rate	35.94%	25.40%	NA

Note:

All data July 2014 and following will be broken out according to the new DFR region structure effective July 1 2014.

Notes:

Reporting periods for SNAP Error Rates reflect the review period and Federal submission deadline. The month reported above is the month in which an action was taken included in the review sample.

Positive actions are those which produced an issuance of benefits to a household. Negative actions are those which closed or denied benefits to a household.

Error Rate data is reported by the state before the federal agency has accepted and finalized the results. This rate is subject to revision based upon: completion and submission of outstanding reviews; final review corrections; and completion of previously dropped reviews. Monthly numbers are taken from end-of-month totals. The error status of cases may be changed by the State or Federal Review process, which would cause a change that might not be reflected in the previous monthly numbers.



DIVISION OF FAMILY RESOURCES

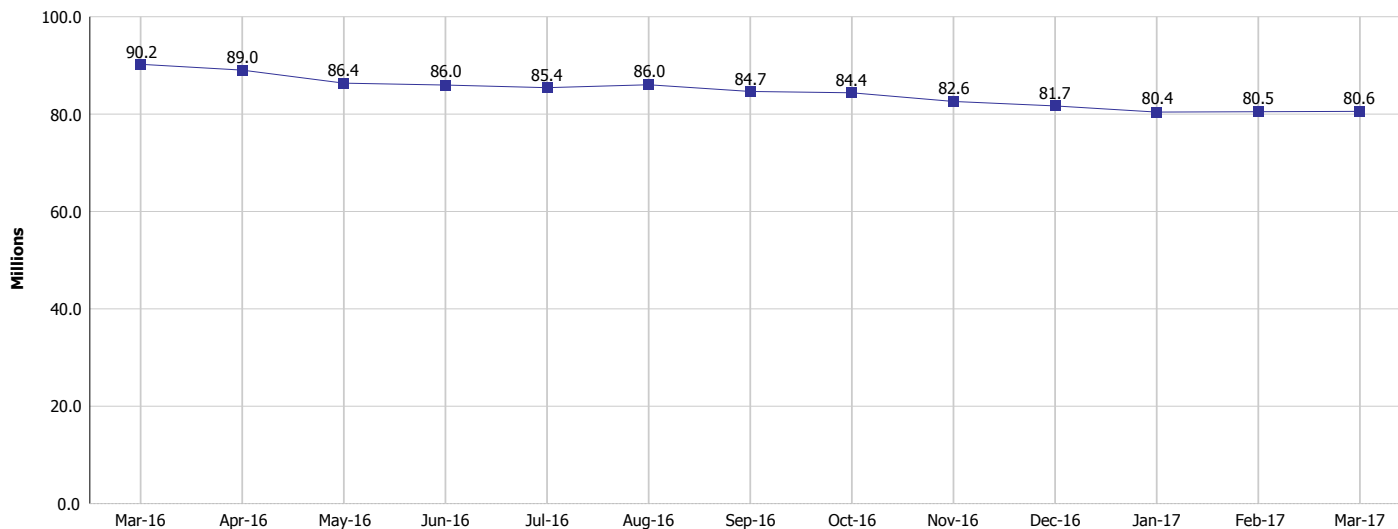
Monthly Management Report

Reporting Month: March 2017

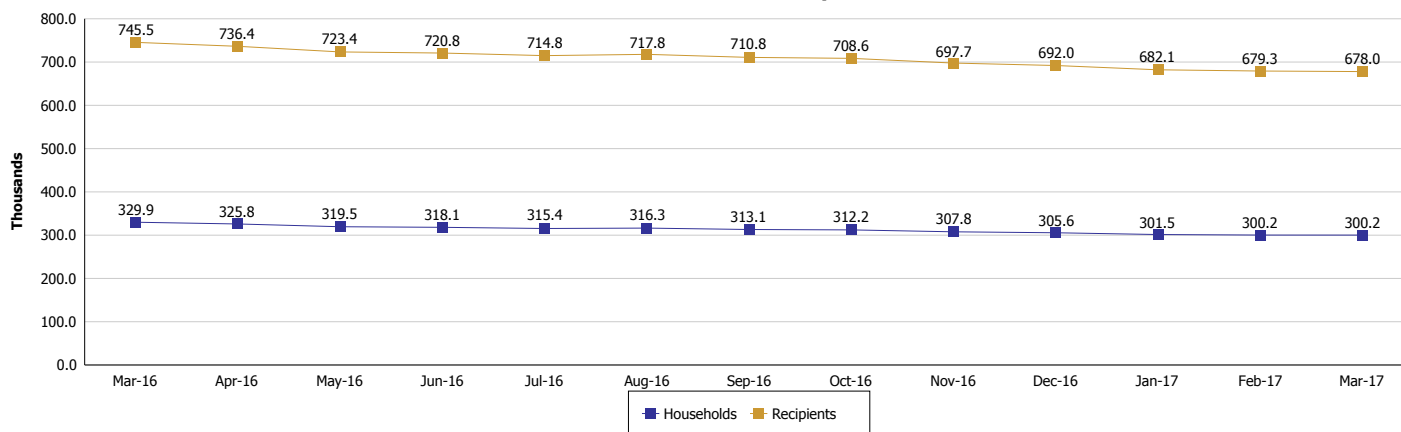
Location: Statewide

SUPPLEMENTAL NUTRITION ASSISTANCE PROGRAM (SNAP)

SNAP Issuance



SNAP Households and Recipients



Note:

All data July 2014 and following will be broken out according to the new DFR region structure effective July 1 2014.



DIVISION OF FAMILY RESOURCES

Monthly Management Report

Reporting Month: March 2017

Location: Statewide

HIP 2.0 and SNAP

	March 2017	February 2017	March 2016	Annual Change
Total HIP 2.0 Members	439,796	434,161	393,697	11.71%
HIP Members also SNAP Recipients	157,725	157,208	166,782	-5.43%
Percentage HIP Members SNAP Recipients	35.9%	36.2%	42.4%	6.18%
HIP Members SNAP ABAWDs	5,146	5,237	7,124	-27.77%
Percentage HIP Members SNAP ABAWDs	1.2%	1.2%	1.8%	6.18%

Note:

All data July 2014 and following will be broken out according to the new DFR region structure effective July 1 2014.



DIVISION OF FAMILY RESOURCES

Monthly Management Report

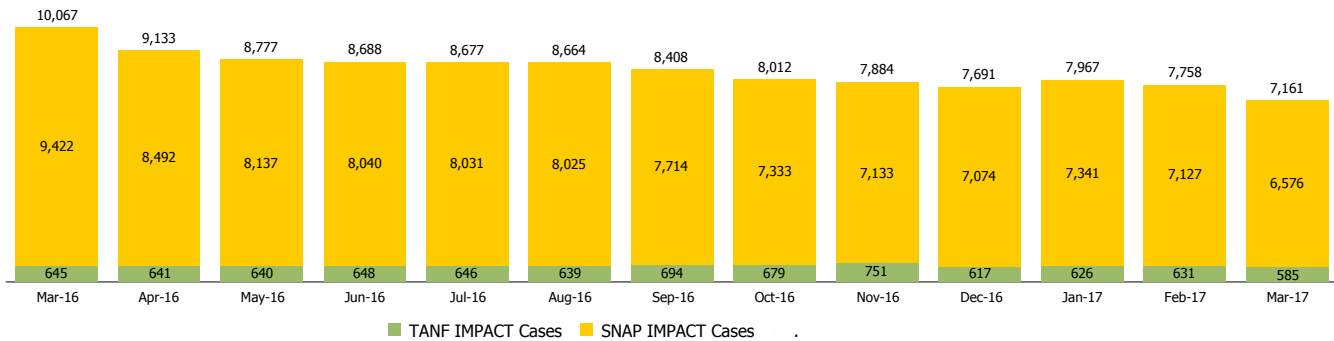
Reporting Month: March 2017

Location: Statewide

INDIANA MANPOWER PLACEMENT AND COMPREHENSIVE TRAINING (IMPACT)

	March 2017	February 2017	March 2016	Annual Change
Number of IMPACT cases	7,161	7,758	10,067	-28.87%
Number of TANF IMPACT adults	585	631	645	-9.30%
Number of SNAP IMPACT Cases	6,576	7,127	9,422	-30.21%
Total number of adults employed	1,351	1,156	1,613	-16.24%
Number of TANF IMPACT adults newly employed (within past 30 days)	137	97	168	-18.45%
Number of SNAP IMPACT adults employed	1,214	1,059	1,445	-15.99%
Total number of adults ineligible due to employment	5,394	4,805	6,076	-11.22%
Number of TANF adults ineligible due to employment	20	17	28	-28.57%
Number of SNAP adults ineligible due to employment	5,374	4,788	6,048	-11.14%

IMPACT Caseloads
(SNAP, TANF, Total Caseload)



Note:

All data July 2014 and following will be broken out according to the new DFR region structure effective July 1 2014.