



DIVISION OF FAMILY RESOURCES

Monthly Management Report April 2013

State of Indiana

Michael R. Pence
Governor

Family and Social Services Administration

Debra F. Minott
Secretary

Division of Family Resources

Lance Rhodes
Director

For questions regarding data on this report contact:
office.Communications@fssa.IN.gov



State of Indiana

Published May 2013



DIVISION OF FAMILY RESOURCES

Monthly Management Report

Reporting Month: April 2013

Location: Statewide

TEMPORARY ASSISTANCE FOR NEEDY FAMILIES (TANF)

Child-Only and One-Parent Families	April 2013	March 2013	April 2012	Annual Change
Number of families receiving TANF Grants	11,541	11,929	15,098	-23.56%
Total number of grant recipients	25,395	26,494	35,432	-28.33%
Number of adult grant recipients	4,964	5,283	8,097	-38.69%
Number of child grant recipients	20,431	21,211	27,335	-25.26%
Total payments	\$2,118,569	\$2,188,695	\$2,775,933	-23.68%
Average payment per case	\$183.57	\$183.48	\$183.86	-0.16%
Average payment per recipient	\$83.42	\$82.61	\$78.35	6.48%
Number of cases with benefits reduced to zero	492	499	699	-29.61%
Number of recipients with benefits reduced to zero	1,119	1,104	1,628	-31.27%
Number of adult recipients with benefit reduced to zero	291	296	478	-39.12%
Number of child recipients with benefit reduced to zero	828	808	1,150	-28.00%

Two-Parent Families	April 2013	March 2013	April 2012	Annual Change
Number of families receiving TANF Grants	824	869	1,135	-27.40%
Total number of grant recipients	3,392	3,575	4,654	-27.12%
Number of adult grant recipients	1,327	1,401	1,833	-27.61%
Number of child grant recipients	2,065	2,174	2,821	-26.80%
Total payments	\$179,425	\$188,065	\$242,529	-26.02%
Average payment per case	\$217.75	\$216.42	\$213.68	1.90%
Average payment per recipient	\$52.90	\$52.61	\$52.11	1.51%
Number of cases with benefits reduced to zero	31	29	50	-38.00%
Number of recipients with benefits reduced to zero	124	108	200	-38.00%
Number of adult recipients with benefit reduced to zero	47	43	82	-42.68%
Number of child recipients with benefit reduced to zero	77	65	118	-34.75%



DIVISION OF FAMILY RESOURCES

Monthly Management Report

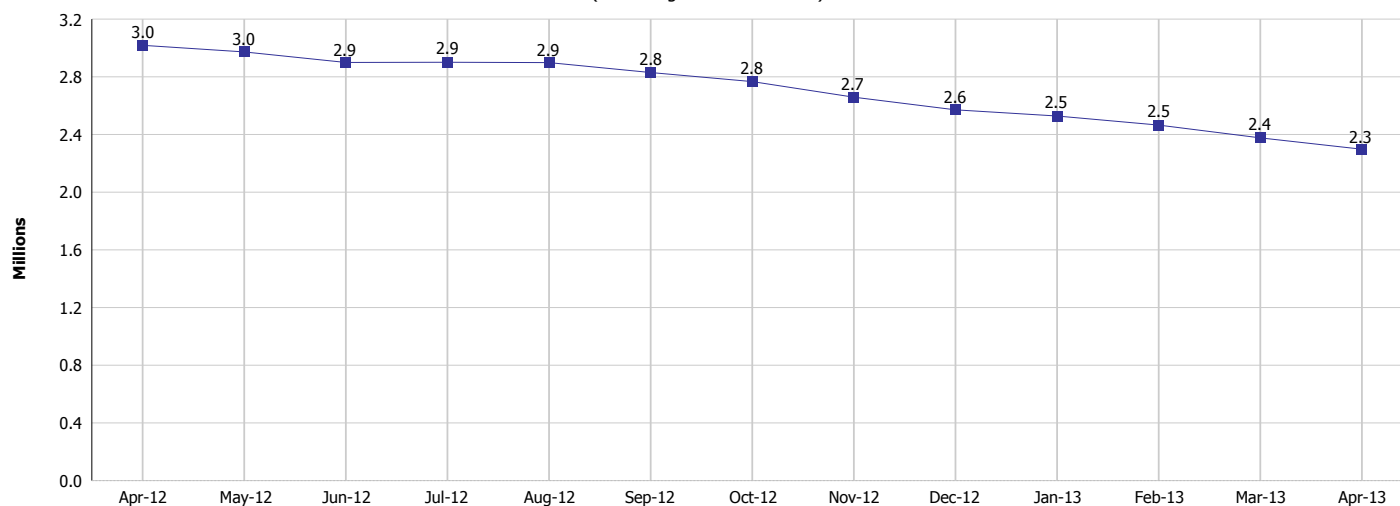
Reporting Month: April 2013

Location: Statewide

TEMPORARY ASSISTANCE FOR NEEDY FAMILIES (TANF)

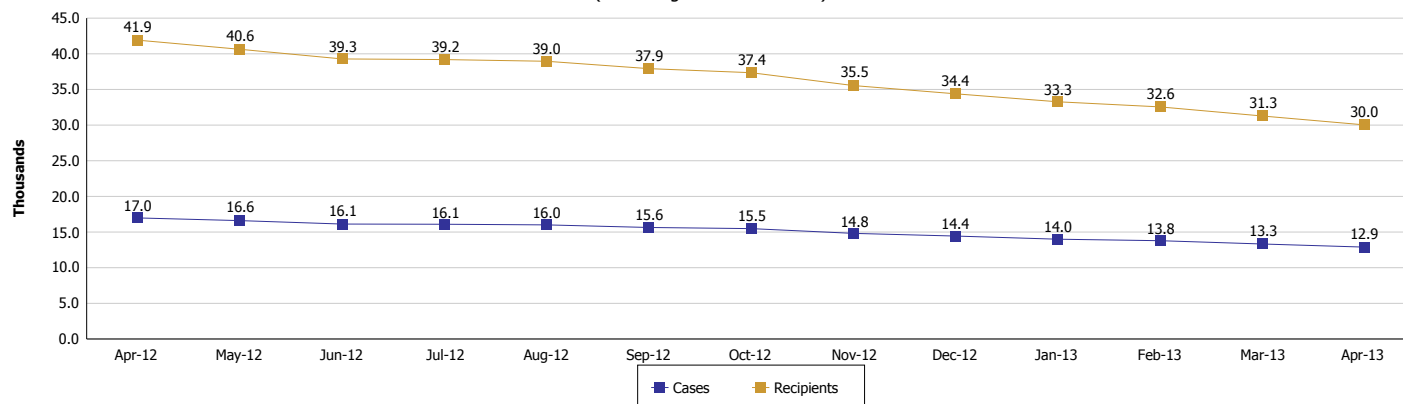
TANF Cash Assistance

(TANF Regular and TANF UP)



TANF Cases and Recipients

(TANF Regular and TANF UP)





DIVISION OF FAMILY RESOURCES

Monthly Management Report

Reporting Month: April 2013

Location: Statewide

SUPPLEMENTAL NUTRITION ASSISTANCE PROGRAM (SNAP)

	April 2013	March 2013	April 2012	Annual Change
Total issuance	\$122,022,530	\$122,190,290	\$118,708,029	2.79%
Number of households receiving SNAP benefits	415,295	415,700	398,291	4.27%
Number of recipients	924,536	926,997	901,315	2.58%
Average issuance per household	\$293.82	\$293.94	\$298.04	-1.42%
Average issuance per recipient	\$131.98	\$131.81	\$131.71	0.21%

SNAP ERROR RATES

	December 2012	November 2012	October 2012	Cumulative FFY 2012
FFY Cumulative Positive Error Rate	6.28%	4.98%	6.68%	3.47%
Monthly Positive Error Rate	8.76%	3.38%	6.68%	NA
FFY Cumulative Negative Error Rate	0.00%	0.00%	0.00%	2.46%
Monthly Negative Error Rate	0.00%	0.00%	0.00%	NA

Notes:

Reporting periods for SNAP Error Rates reflect the review period and Federal submission deadline. The month reported above is the month in which an action was taken included in the review sample.

Positive actions are those which produced an issuance of benefits to a household. Negative actions are those which closed or denied benefits to a household.

Error Rate data is reported by the state before the federal agency has accepted and finalized the results. This rate is subject to revision. Monthly numbers are taken from the end of the month totals. Error status of cases may be changed by either State or Federal Review process, which would cause a change that might not be reflected in the previous monthly numbers.



DIVISION OF FAMILY RESOURCES

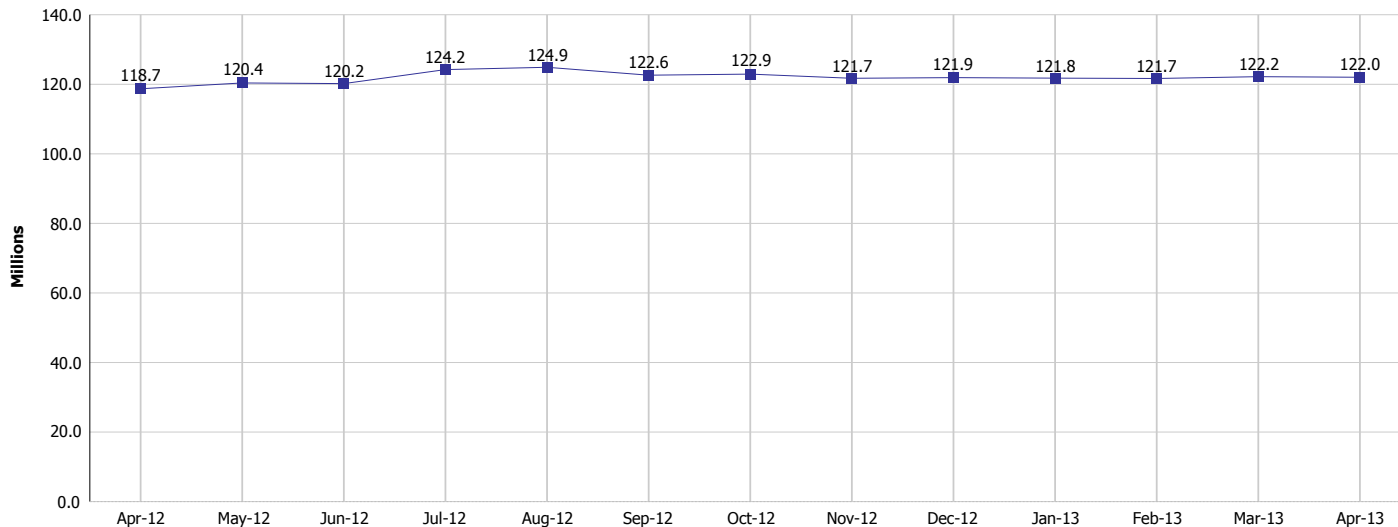
Monthly Management Report

Reporting Month: April 2013

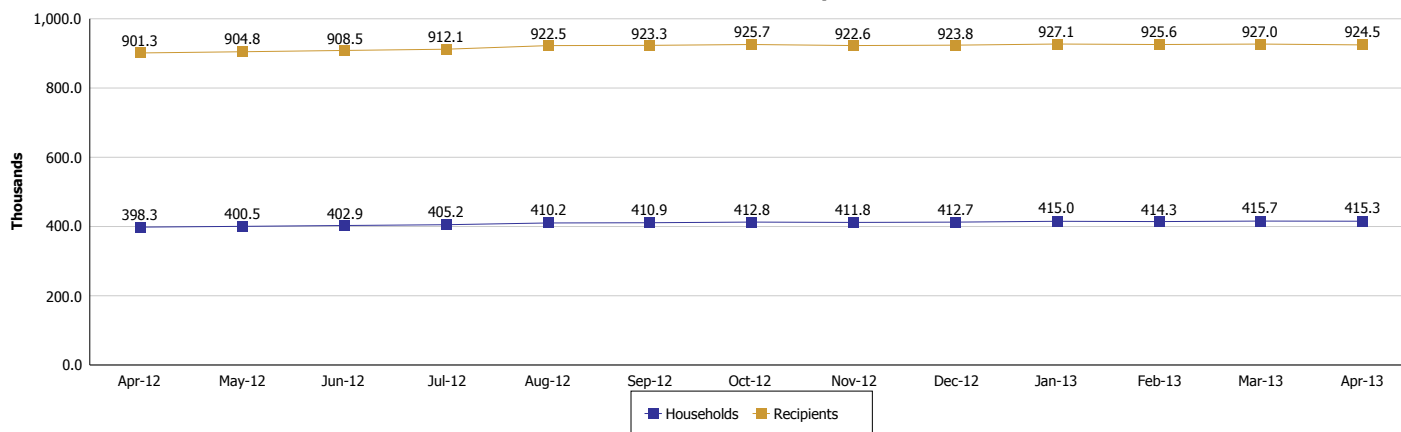
Location: Statewide

SUPPLEMENTAL NUTRITION ASSISTANCE PROGRAM (SNAP)

SNAP Issuance



SNAP Households and Recipients





DIVISION OF FAMILY RESOURCES

Monthly Management Report

Reporting Month: April 2013

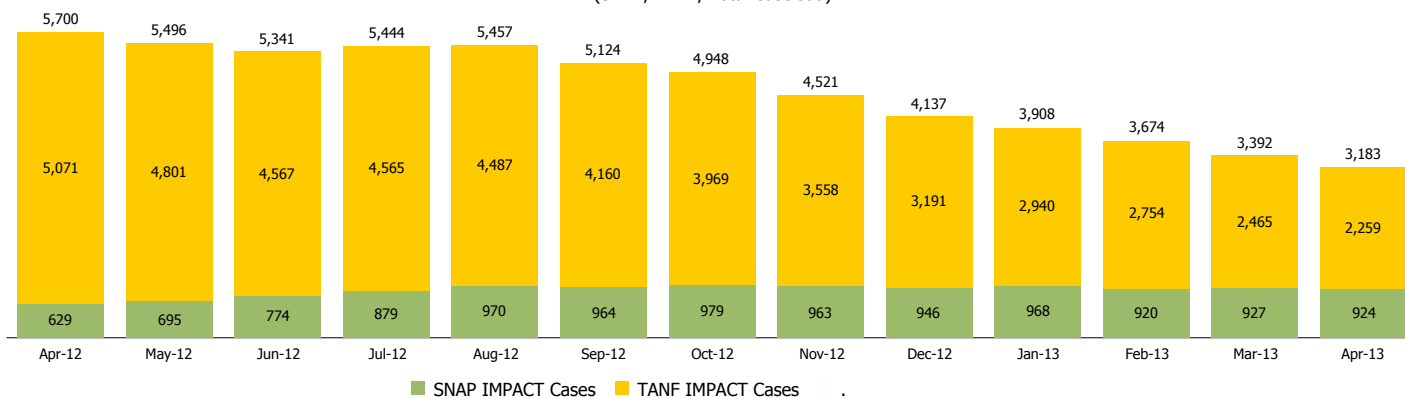
Location: Statewide

INDIANA MANPOWER PLACEMENT AND COMPREHENSIVE TRAINING (IMPACT)

	April 2013	March 2013	April 2012	Annual Change
Number of IMPACT cases	3,183	3,392	5,700	-44.16%
Number of TANF IMPACT Cases	2,259	2,465	5,071	-55.45%
Number of SNAP IMPACT Cases	924	927	629	46.90%
Total number of adults employed	259	248	411	-36.98%
Number of TANF IMPACT adults employed	195	201	348	-43.97%
Number of SNAP IMPACT adults employed	64	47	63	1.59%
Total number of adults ineligible due to employment	1,654	1,641	1,621	2.04%
Number of TANF adults ineligible due to employment	29	21	27	7.41%
Number of SNAP adults ineligible due to employment	1,625	1,620	1,594	1.94%

IMPACT Caseloads

(SNAP, TANF, Total Caseload)



Notes:

The methodology used for counting the number of TANF IMPACT cases changed in June 2010 to show all individuals referred to IMPACT for services.

Beginning with May 2010 the SNAP IMPACT program became a voluntary program. This change resulted in a substantial reduction in the number of IMPACT cases.



DIVISION OF FAMILY RESOURCES

Monthly Management Report

Reporting Month: April 2013

Location: Statewide

CHILD CARE

	April 2013	March 2013	April 2012	Annual Change
Total Subsidized Child Care Payments	\$13,339,377	\$13,390,436	\$12,689,075	5.12%
Total Number of CCDF Children	36,127	36,014	34,079	6.01%
Total Number of licensed Child Care Homes	2,825	2,819	2,875	-1.74%
Licensed Capacity of Child Care Homes	35,799	35,664	36,111	-0.86%
Total Number of Licensed CC Centers	590	592	602	-1.99%
Licensed Capacity of CC Centers	63,915	64,024	65,268	-2.07%
Total Number of Registered Ministries (Capacity not Regulated)	681	680	722	-5.68%