



DIVISION OF FAMILY RESOURCES

Statewide Monthly Management Report July 2022

State of Indiana
Eric Holcomb
Governor

**Family and Social Services
Administration**
Dan Rusyniak, MD
Secretary

**Division of Family
Resources**
Adrienne Shields
Director

For questions regarding data on this report contact:
office.Communications@fssa.IN.gov



State of Indiana
Published August 2022



DIVISION OF FAMILY RESOURCES

Monthly Management Report

Reporting Month: July 2022

Location: Statewide

TEMPORARY ASSISTANCE FOR NEEDY FAMILIES (TANF)

Child-Only and One-Parent Families	July 2022	June 2022	July 2021	Annual Change
Number of families receiving TANF Grants	3,760	3,762	5,983	-37.16%
Total number of grant recipients	7,440	7,531	13,306	-44.09%
Number of adult grant recipients	690	707	2,625	-73.71%
Number of child grant recipients	6,750	6,824	10,681	-36.80%
Total payments	\$722,998	\$729,157	\$1,249,917	-42.16%
Average payment per case	\$192.29	\$193.82	\$208.91	-7.96%
Average payment per recipient	\$97.18	\$96.82	\$93.94	3.45%
Number of cases with benefits reduced to zero	106	97	411	-74.21%
Number of recipients with benefits reduced to zero	203	188	1,089	-81.36%
Number of adult recipients with benefit reduced to zero	36	30	304	-88.16%
Number of child recipients with benefit reduced to zero	167	158	785	-78.73%

Two-Parent Families	July 2022	June 2022	July 2021	Annual Change
Number of families receiving TANF Grants	256	223	1,053	-75.69%
Total number of grant recipients	890	761	2,919	-69.51%
Number of adult grant recipients	331	263	842	-60.69%
Number of child grant recipients	559	498	2,077	-73.09%
Total payments	\$74,622	\$63,738	\$249,499	-70.09%
Average payment per case	\$291.49	\$285.82	\$236.94	23.02%
Average payment per recipient	\$83.84	\$83.76	\$85.47	-1.91%
Number of cases with benefits reduced to zero	2	3	63	-96.83%
Number of recipients with benefits reduced to zero	10	13	230	-95.65%
Number of adult recipients with benefit reduced to zero	4	6	72	-94.44%
Number of child recipients with benefit reduced to zero	6	7	158	-96.20%

Note:

For August 2021, a one time payment of \$400 per recipient was included in the Total payments and Average payments.
 TANF section rules changed to reflect Federal reporting logic effective September 2021.

Source:



DIVISION OF FAMILY RESOURCES

Monthly Management Report

Reporting Month: July 2022

Location: Statewide

TANF - APPLICATIONS

	July 2022	June 2022	July 2021	Annual Change
Number of Applications	3,573	4,013	3,390	5.40%



DIVISION OF FAMILY RESOURCES

Monthly Management Report

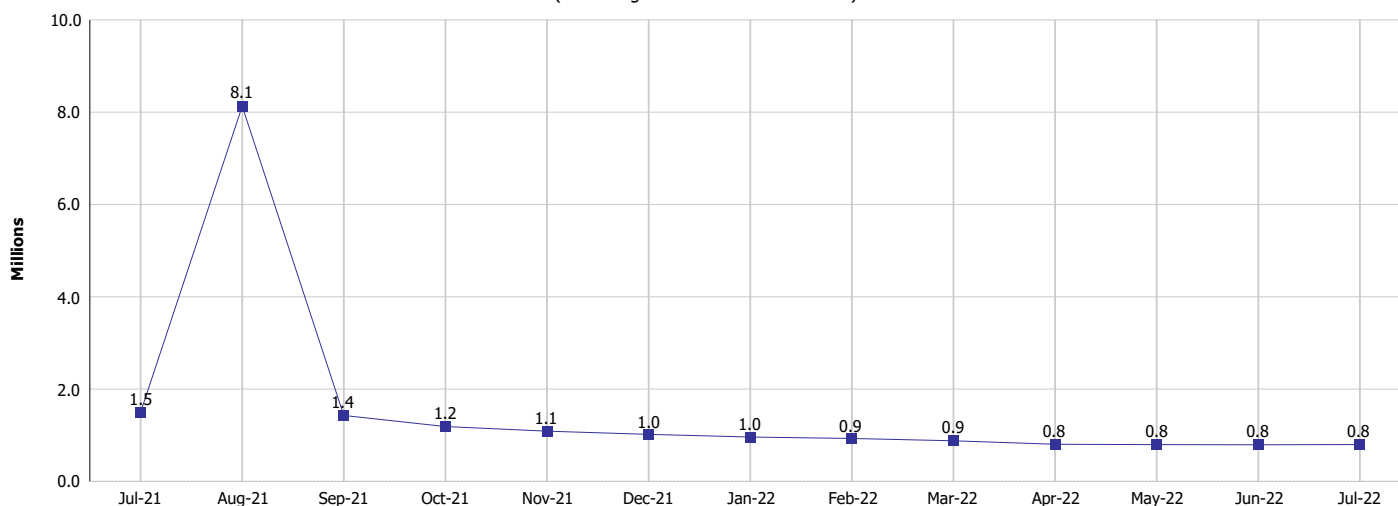
Reporting Month: July 2022

Location: Statewide

TEMPORARY ASSISTANCE FOR NEEDY FAMILIES (TANF)

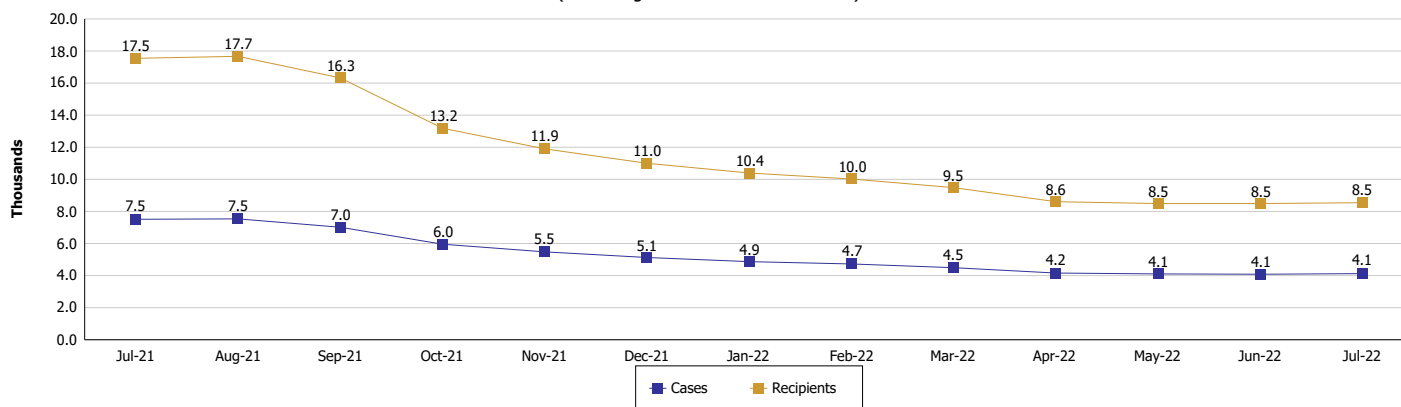
TANF Cash Assistance

(TANF Regular and TANF Two-Parent)



TANF Cases and Recipients

(TANF Regular and TANF Two-Parent)



Note:

For August 2021, a one time payment of \$400 per recipient was included in the Total payments and Average payments. TANF section rules changed to reflect Federal reporting logic effective September 2021.



DIVISION OF FAMILY RESOURCES

Monthly Management Report

Reporting Month: July 2022

Location: Statewide

SUPPLEMENTAL NUTRITION ASSISTANCE PROGRAM (SNAP)

	July 2022	June 2022	July 2021	Annual Change
Total issuance	\$101,529,156	\$104,747,398	\$143,941,752	-29.47%
Number of households receiving SNAP benefits	288,743	289,891	293,072	-1.48%
Number of recipients	613,106	616,629	624,959	-1.90%
Average issuance per household	\$351.62	\$361.33	\$491.15	-28.41%
Average issuance per recipient	\$165.60	\$169.87	\$230.32	-28.10%
Number of Applications	21,030	23,402	19,812	6.15%



DIVISION OF FAMILY RESOURCES

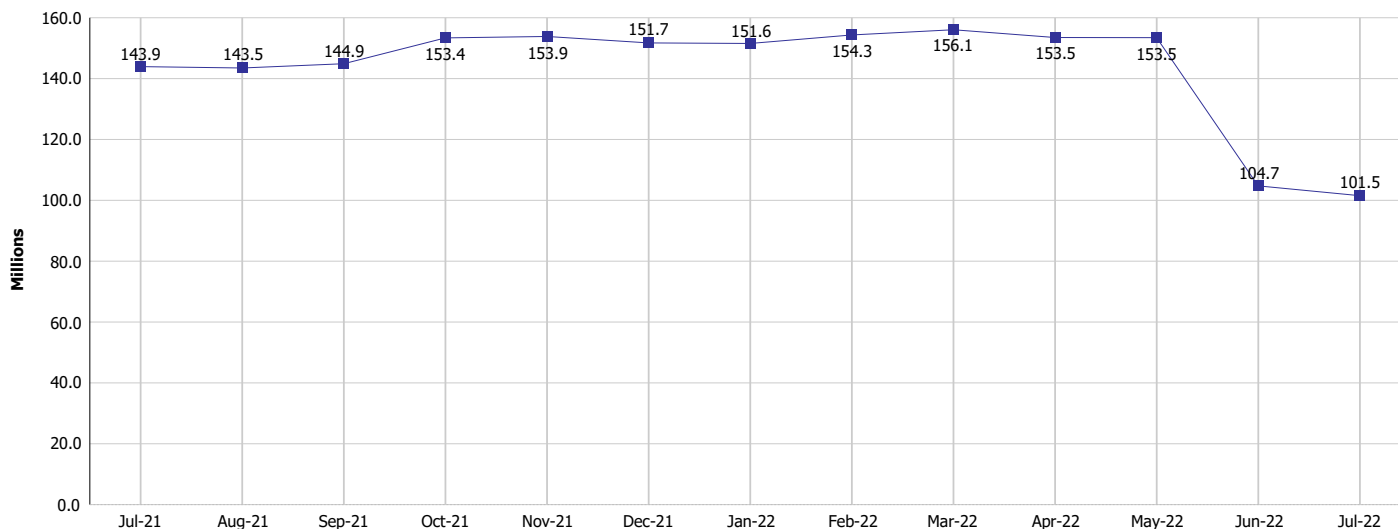
Monthly Management Report

Reporting Month: July 2022

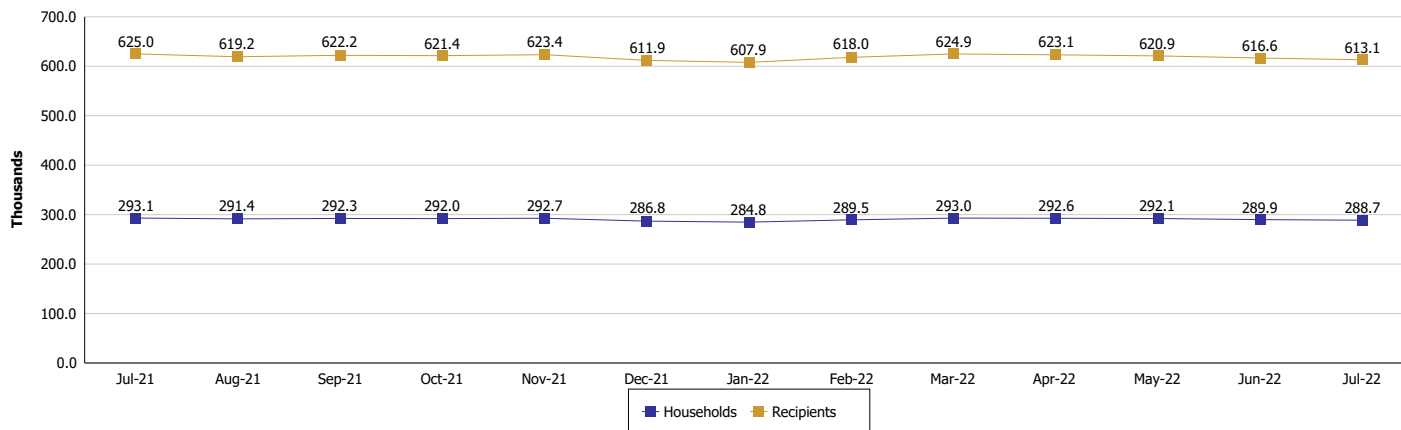
Location: Statewide

SUPPLEMENTAL NUTRITION ASSISTANCE PROGRAM (SNAP)

SNAP Issuance



SNAP Households and Recipients



Note:

Run Date: Aug 14, 2022



DIVISION OF FAMILY RESOURCES

Monthly Management Report

Reporting Month: July 2022

Location: Statewide

HIP 2.0 and SNAP

	July 2022	June 2022	July 2021	Annual Change
Total HIP 2.0 Members	795,550	788,651	695,520	14.38%
HIP Members also SNAP Recipients	185,660	186,535	186,215	-0.30%
Percentage HIP Members SNAP Recipients	23.3%	23.7%	26.8%	-3.44
HIP Members SNAP ABAWDs	10,600	7,983	0	0%
Percentage HIP Members SNAP ABAWDs	1.3%	1.0%	0	1.3



DIVISION OF FAMILY RESOURCES

Monthly Management Report

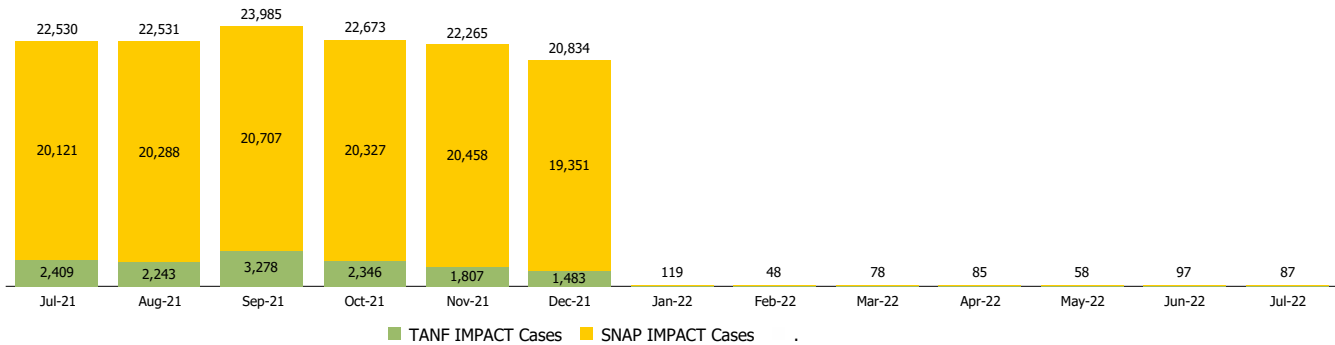
Reporting Month: July 2022

Location: Statewide

INDIANA MANPOWER PLACEMENT AND COMPREHENSIVE TRAINING (IMPACT)

	July 2022	June 2022	July 2021	Annual Change
Number of IMPACT cases	87	97	22,530	-99.61%
Number of TANF IMPACT adults	34	40	2,409	-98.59%
Number of SNAP IMPACT Cases	53	57	20,121	-99.74%
Total number of adults employed	2,740	2,712	2,209	24.04%
Number of TANF IMPACT adults newly employed (within past 30 days)	39	39	161	-75.78%
Number of SNAP IMPACT adults employed	2,701	2,673	2,048	31.88%
Total number of adults ineligible due to employment	2,210	2,713	2,461	-10.20%
Number of TANF adults ineligible due to employment	20	19	22	-9.09%
Number of SNAP adults ineligible due to employment	2,190	2,694	2,439	-10.21%

IMPACT Caseloads
(SNAP, TANF, Total Caseload)



Note:

Effective January 2022, these numbers have been adjusted to reflect only those actually participating in IMPACT.