



DIVISION OF FAMILY RESOURCES

Monthly Management Report July 2019

State of Indiana

Eric Holcomb
Governor

Family and Social Services Administration

Jennifer Walthall, M.D.
Secretary

Division of Family Resources

Adrienne Shields
Director

For questions regarding data on this report contact:
office.Communications@fssa.IN.gov



State of Indiana

Published August 2019



DIVISION OF FAMILY RESOURCES

Monthly Management Report

Reporting Month: July 2019

Location: Statewide

TEMPORARY ASSISTANCE FOR NEEDY FAMILIES (TANF)

Child-Only and One-Parent Families	Jul 31, 2019	June 2019	July 2018	Annual Change
Number of families receiving TANF Grants	5,024	5,111	5,893	-14.75%
Total number of grant recipients	10,308	10,445	12,288	-16.11%
Number of adult grant recipients	1,404	1,409	1,691	-16.97%
Number of child grant recipients	8,904	9,036	10,597	-15.98%
Total payments	\$961,770	\$971,434	\$1,138,353	-15.51%
Average payment per case	\$191.44	\$190.07	\$193.17	-0.90%
Average payment per recipient	\$93.30	\$93.00	\$92.64	0.72%
Number of cases with benefits reduced to zero	68	66	84	-19.05%
Number of recipients with benefits reduced to zero	142	137	188	-24.47%
Number of adult recipients with benefit reduced to zero	34	31	44	-22.73%
Number of child recipients with benefit reduced to zero	108	106	144	-25.00%

Two-Parent Families	Jul 31, 2019	June 2019	July 2018	Annual Change
Number of families receiving TANF Grants	219	220	230	-4.78%
Total number of grant recipients	806	814	890	-9.44%
Number of adult grant recipients	295	297	307	-3.91%
Number of child grant recipients	511	517	583	-12.35%
Total payments	\$50,222	\$45,845	\$47,787	5.10%
Average payment per case	\$229.32	\$208.39	\$207.77	10.37%
Average payment per recipient	\$62.31	\$56.32	\$53.69	16.05%
Number of cases with benefits reduced to zero	6	5	6	0.00%
Number of recipients with benefits reduced to zero	29	26	21	38.10%
Number of adult recipients with benefit reduced to zero	10	9	8	25.00%
Number of child recipients with benefit reduced to zero	19	17	13	46.15%

Note:

All data July 2014 and following will be broken out according to the new DFR region structure effective July 1 2014.

Source:



DIVISION OF FAMILY RESOURCES

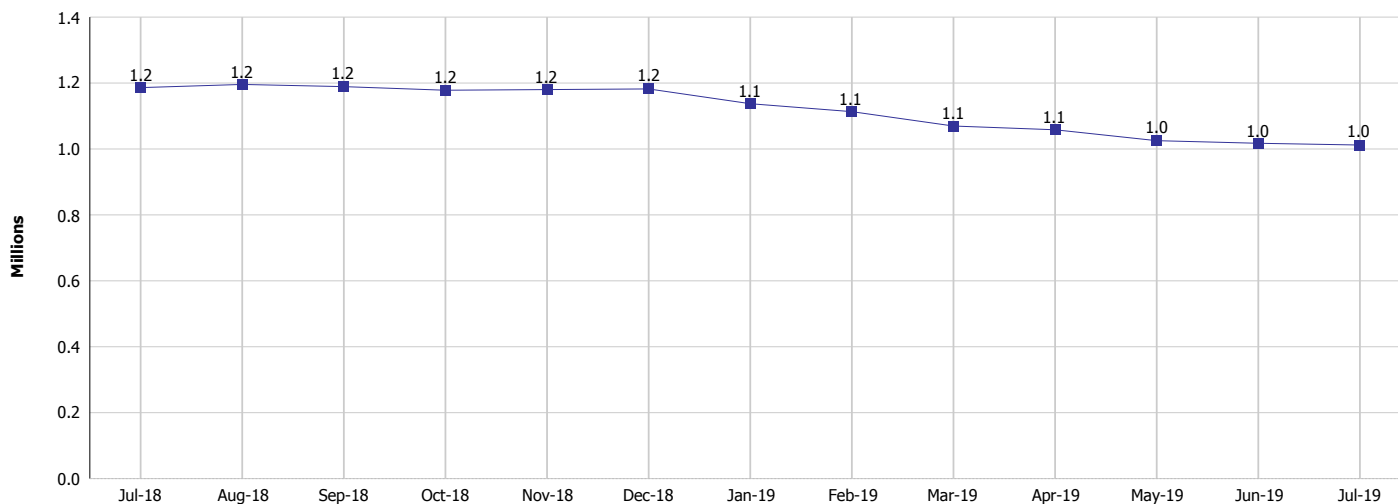
Monthly Management Report

Reporting Month: July 2019

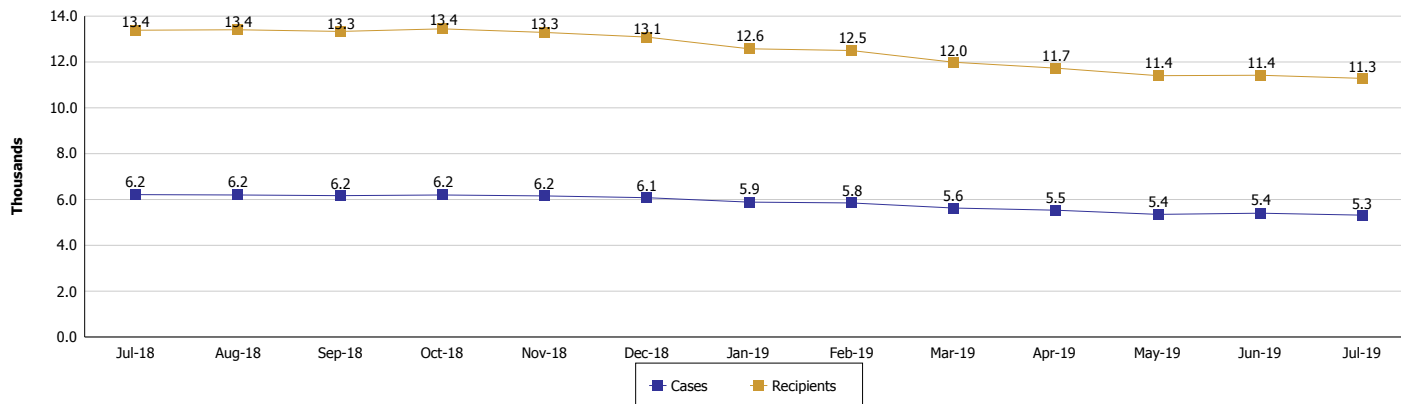
Location: Statewide

TEMPORARY ASSISTANCE FOR NEEDY FAMILIES (TANF)

TANF Cash Assistance
(TANF Regular and TANF Two-Parent)



TANF Cases and Recipients
(TANF Regular and TANF Two-Parent)



Note:

All data July 2014 and following will be broken out according to the new DFR region structure effective July 1 2014.

Monthly Management Report

Reporting Month: July 2019 Location: Statewide

SUPPLEMENTAL NUTRITION ASSISTANCE PROGRAM (SNAP)

	July 2019	June 2019	July 2018	Annual Change
Total issuance	\$68,195,853	\$69,339,552	\$71,387,921	-4.47%
Number of households receiving SNAP benefits	258,339	267,100	269,045	-3.98%
Number of recipients	573,295	588,987	601,227	-4.65%
Average issuance per household	\$263.98	\$259.60	\$265.34	-0.51%
Average issuance per recipient	\$118.95	\$117.73	\$118.74	0.18%

Note:
All data July 2014 and following will be broken out according to the new DFR region structure effective July 1 2014.

SNAP ERROR RATES

	March 2019	February 2019	January 2019	Cumulative FFY 2018
FFY Cumulative Positive Error Rate	9.12%	9.36%	9.50%	6.10%
Monthly Positive Error Rate	8.20%	3.96%	5.09%	NA
FFY Cumulative Negative Error Rate	41.50%	40.61%	37.96%	39.94%
Monthly Negative Error Rate	46.30%	54.17%	49.09%	NA

Note:
All data July 2014 and following will be broken out according to the new DFR region structure effective July 1 2014.

Notes:
Reporting periods for SNAP Error Rates reflect the review period and Federal submission deadline. The month reported above is the month in which an action was taken included in the review sample.
Positive actions are those which produced an issuance of benefits to a household. Negative actions are those which closed or denied benefits to a household.
Error Rate data is reported by the state before the federal agency has accepted and finalized the results. This rate is subject to revision based upon: completion and submission of outstanding reviews; final review corrections; and completion of previously dropped reviews. Monthly numbers are taken from end-of-month totals. The error status of cases may be changed by the State or Federal Review process, which would cause a change that might not be reflected in the previous monthly numbers.



DIVISION OF FAMILY RESOURCES

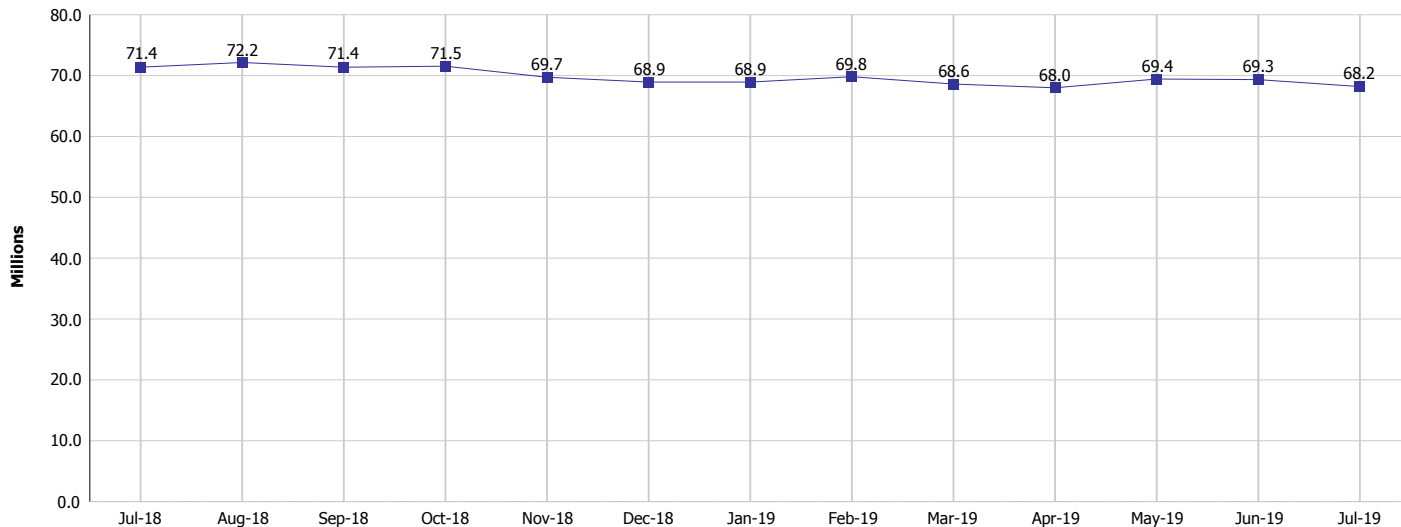
Monthly Management Report

Reporting Month: July 2019

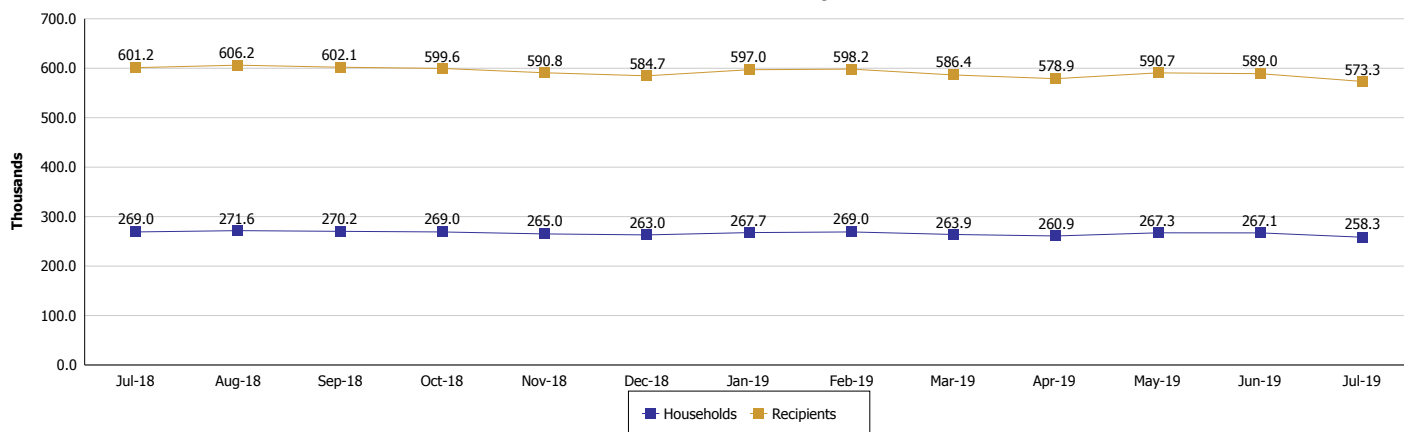
Location: Statewide

SUPPLEMENTAL NUTRITION ASSISTANCE PROGRAM (SNAP)

SNAP Issuance



SNAP Households and Recipients



Note:

All data July 2014 and following will be broken out according to the new DFR region structure effective July 1 2014.



DIVISION OF FAMILY RESOURCES

Monthly Management Report

Reporting Month: July 2019

Location: Statewide

HIP 2.0 and SNAP

	July 2019	June 2019	July 2018	Annual Change
Total HIP 2.0 Members	426,318	427,799	426,512	-0.05%
HIP Members also SNAP Recipients	138,892	139,873	144,728	-4.03%
Percentage HIP Members SNAP Recipients	32.6%	32.7%	33.9%	-1.43%
HIP Members SNAP ABAWDs	3,869	3,969	6,089	-36.46%
Percentage HIP Members SNAP ABAWDs	0.9%	0.9%	1.4%	-1.43%

Note:

All data July 2014 and following will be broken out according to the new DFR region structure effective July 1 2014.



DIVISION OF FAMILY RESOURCES

Monthly Management Report

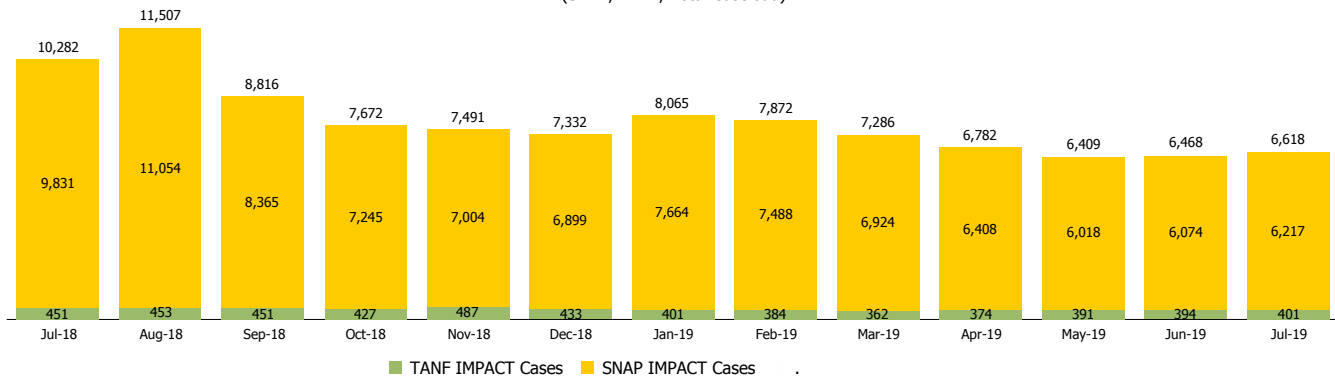
Reporting Month: July 2019

Location: Statewide

INDIANA MANPOWER PLACEMENT AND COMPREHENSIVE TRAINING (IMPACT)

	July 2019	June 2019	July 2018	Annual Change
Number of IMPACT cases	6,618	6,468	10,282	-35.64%
Number of TANF IMPACT adults	401	394	451	-11.09%
Number of SNAP IMPACT Cases	6,217	6,074	9,831	-36.76%
Total number of adults employed	1,047	1,030	1,331	-21.34%
Number of TANF IMPACT adults newly employed (within past 30 days)	83	69	93	-10.75%
Number of SNAP IMPACT adults employed	964	961	1,238	-22.13%
Total number of adults ineligible due to employment	4,364	4,800	4,544	-3.96%
Number of TANF adults ineligible due to employment	16	6	11	45.45%
Number of SNAP adults ineligible due to employment	4,348	4,794	4,533	-4.08%

IMPACT Caseloads
(SNAP, TANF, Total Caseload)



Note:

All data July 2014 and following will be broken out according to the new DFR region structure effective July 1 2014.