



DIVISION OF FAMILY RESOURCES

Monthly Management Report January 2021

State of Indiana

Eric Holcomb
Governor

Family and Social Services Administration

Jennifer Sullivan, M.D.
Secretary

Division of Family Resources

Adrienne Shields
Director

For questions regarding data on this report contact:
office.Communications@fssa.IN.gov



State of Indiana

Published February 2021



DIVISION OF FAMILY RESOURCES

Monthly Management Report

Reporting Month: January 2021

Location: Statewide

TEMPORARY ASSISTANCE FOR NEEDY FAMILIES (TANF)

Child-Only and One-Parent Families	Jan 31, 2021	December 2020	January 2020	Annual Change
Number of families receiving TANF Grants	7,816	7,842	5,086	53.68%
Total number of grant recipients	17,900	17,931	10,566	69.41%
Number of adult grant recipients	3,792	3,800	1,389	173.00%
Number of child grant recipients	14,108	14,131	9,177	53.73%
Total payments	\$1,646,696	\$1,647,599	\$979,976	68.03%
Average payment per case	\$210.68	\$210.10	\$192.68	9.34%
Average payment per recipient	\$91.99	\$91.89	\$92.75	-0.81%
Number of cases with benefits reduced to zero	416	410	68	511.76%
Number of recipients with benefits reduced to zero	1,058	1,019	129	720.16%
Number of adult recipients with benefit reduced to zero	297	277	27	1,000.00%
Number of child recipients with benefit reduced to zero	761	742	102	646.08%

Two-Parent Families	Jan 31, 2021	December 2020	January 2020	Annual Change
Number of families receiving TANF Grants	795	766	223	256.50%
Total number of grant recipients	2,667	2,612	839	217.88%
Number of adult grant recipients	867	855	289	200.00%
Number of child grant recipients	1,800	1,757	550	227.27%
Total payments	\$212,757	\$206,344	\$52,235	307.31%
Average payment per case	\$267.62	\$269.38	\$234.24	14.25%
Average payment per recipient	\$79.77	\$79.00	\$62.26	28.13%
Number of cases with benefits reduced to zero	53	45	6	783.33%
Number of recipients with benefits reduced to zero	204	180	26	684.62%
Number of adult recipients with benefit reduced to zero	80	71	10	700.00%
Number of child recipients with benefit reduced to zero	124	109	16	675.00%

Note:

All data July 2014 and following will be broken out according to the new DFR region structure effective July 1 2014.

Source:



DIVISION OF FAMILY RESOURCES

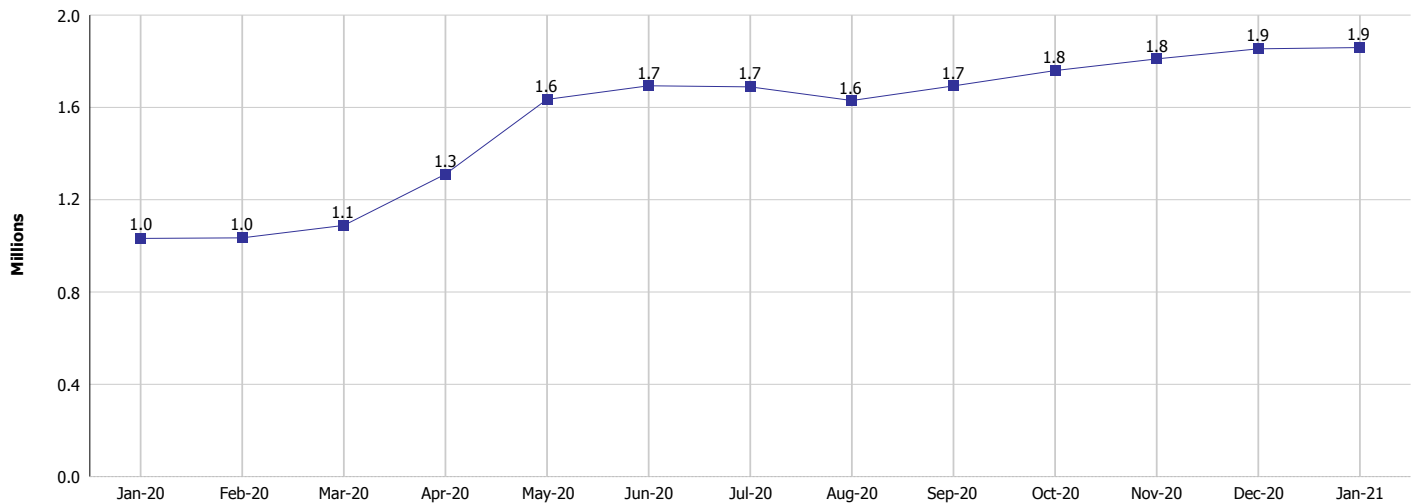
Monthly Management Report

Reporting Month: January 2021

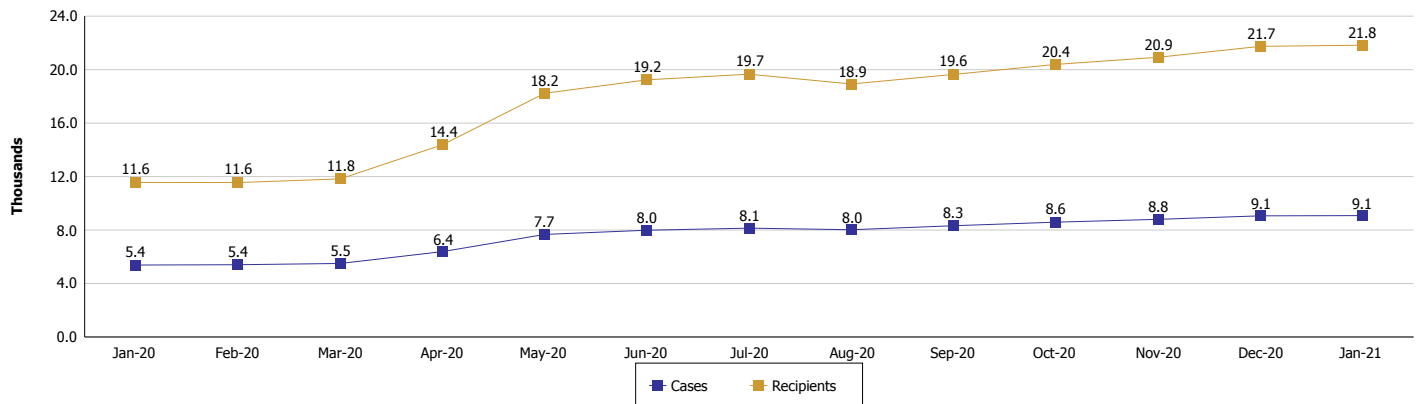
Location: Statewide

TEMPORARY ASSISTANCE FOR NEEDY FAMILIES (TANF)

TANF Cash Assistance
(TANF Regular and TANF Two-Parent)



TANF Cases and Recipients
(TANF Regular and TANF Two-Parent)



Note:

All data July 2014 and following will be broken out according to the new DFR region structure effective July 1 2014.

Monthly Management Report

Reporting Month: January 2021 Location: Statewide

SUPPLEMENTAL NUTRITION ASSISTANCE PROGRAM (SNAP)

	January 2021	December 2020	January 2020	Annual Change
Total issuance	\$142,817,607	\$124,914,906	\$67,073,356	112.93%
Number of households receiving SNAP benefits	312,811	306,899	255,163	22.59%
Number of recipients	674,297	663,854	563,336	19.70%
Average issuance per household	\$456.56	\$407.02	\$262.86	73.69%
Average issuance per recipient	\$211.80	\$188.17	\$119.06	77.89%

Note:
All data July 2014 and following will be broken out according to the new DFR region structure effective July 1 2014.

SNAP ERROR RATES

	Cumulative FFY
FFY Cumulative Positive Error Rate	
Monthly Positive Error Rate	NA
FFY Cumulative Negative Error Rate	
Monthly Negative Error Rate	NA

Note:
All data July 2014 and following will be broken out according to the new DFR region structure effective July 1 2014.

Notes:
Reporting periods for SNAP Error Rates reflect the review period and Federal submission deadline. The month reported above is the month in which an action was taken included in the review sample.
Positive actions are those which produced an issuance of benefits to a household. Negative actions are those which closed or denied benefits to a household.
Error Rate data is reported by the state before the federal agency has accepted and finalized the results. This rate is subject to revision based upon: completion and submission of outstanding reviews; final review corrections; and completion of previously dropped reviews. Monthly numbers are taken from end-of-month totals. The error status of cases may be changed by the State or Federal Review process, which would cause a change that might not be reflected in the previous monthly numbers.



DIVISION OF FAMILY RESOURCES

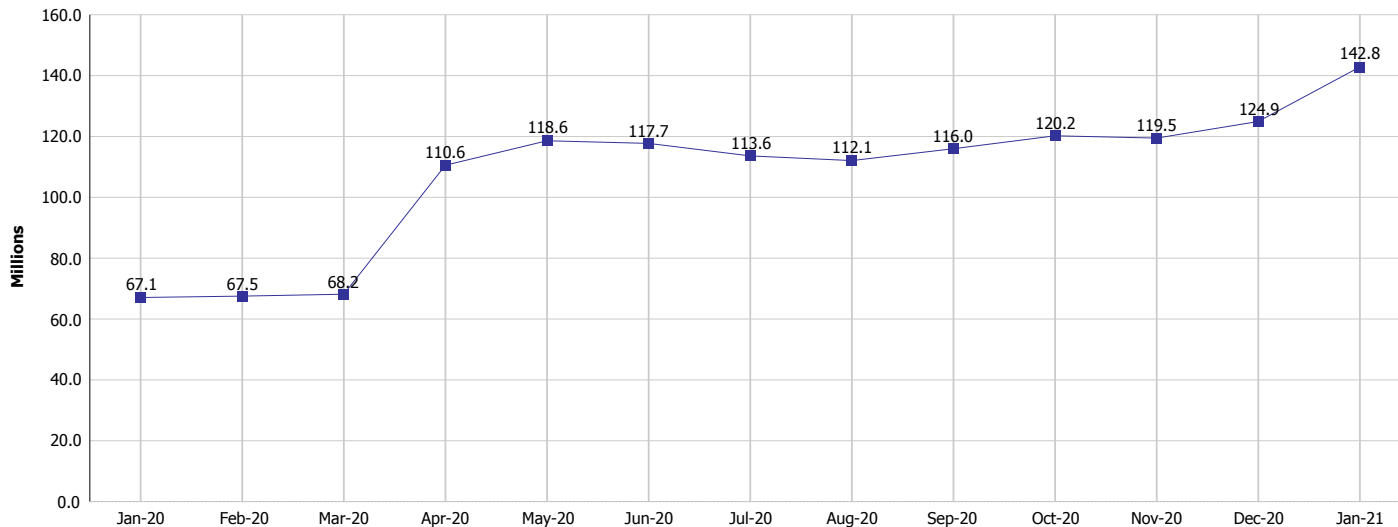
Monthly Management Report

Reporting Month: January 2021

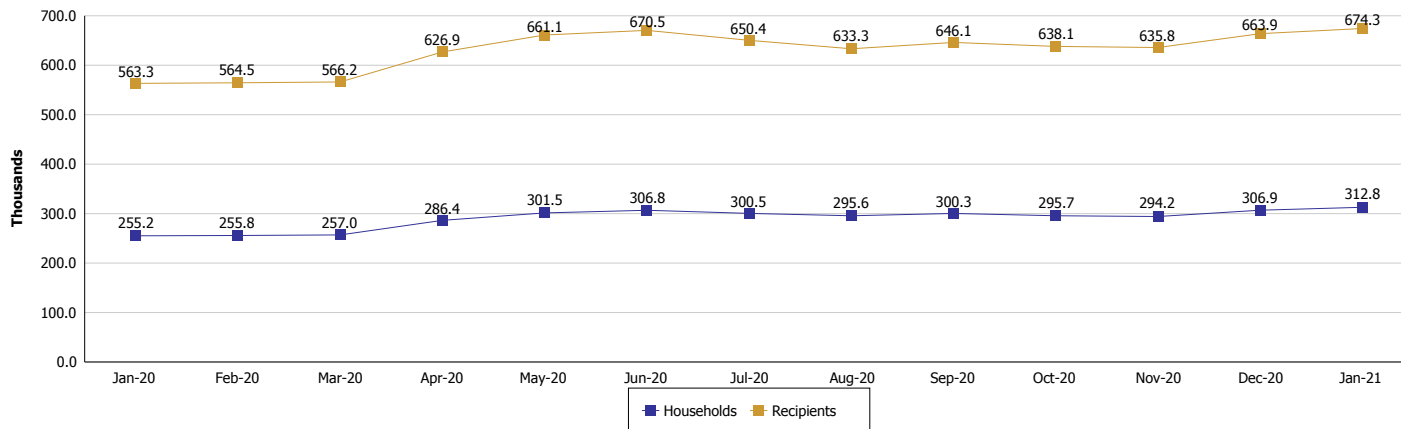
Location: Statewide

SUPPLEMENTAL NUTRITION ASSISTANCE PROGRAM (SNAP)

SNAP Issuance



SNAP Households and Recipients



Note:

All data July 2014 and following will be broken out according to the new DFR region structure effective July 1 2014.



DIVISION OF FAMILY RESOURCES

Monthly Management Report

Reporting Month: January 2021

Location: Statewide

HIP 2.0 and SNAP

	January 2021	December 2020	January 2020	Annual Change
Total HIP 2.0 Members	636,641	623,595	437,787	45.42%
HIP Members also SNAP Recipients	198,415	194,451	139,826	41.90%
Percentage HIP Members SNAP Recipients	31.2%	31.2%	31.9%	-0.77
HIP Members SNAP ABAWDs	0	0	3,075	-100.00%
Percentage HIP Members SNAP ABAWDs	0	0	0.7%	-0.7

Note:

All data July 2014 and following will be broken out according to the new DFR region structure effective July 1 2014.



DIVISION OF FAMILY RESOURCES

Monthly Management Report

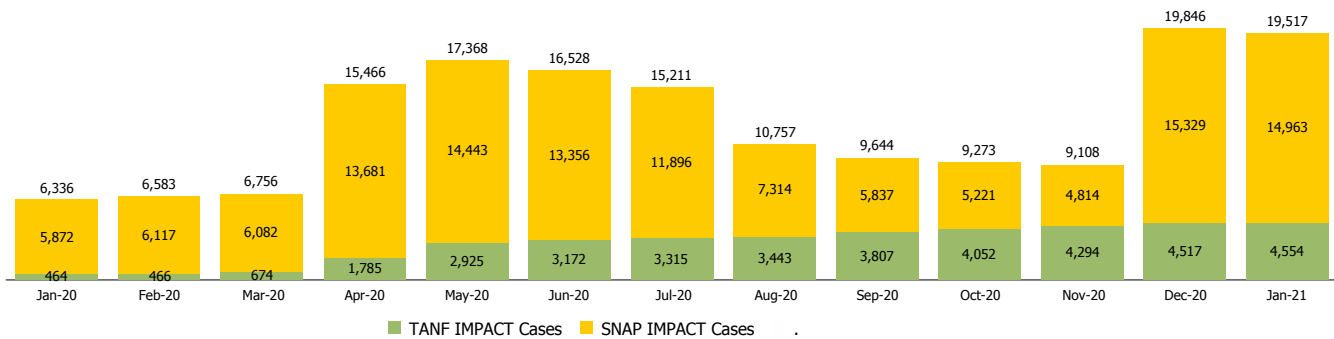
Reporting Month: January 2021

Location: Statewide

INDIANA MANPOWER PLACEMENT AND COMPREHENSIVE TRAINING (IMPACT)

	January 2021	December 2020	January 2020	Annual Change
Number of IMPACT cases	19,517	19,846	6,336	208.03%
Number of TANF IMPACT adults	4,554	4,517	464	881.47%
Number of SNAP IMPACT Cases	14,963	15,329	5,872	154.82%
Total number of adults employed	1,853	1,818	681	172.10%
Number of TANF IMPACT adults newly employed (within past 30 days)	159	152	57	178.95%
Number of SNAP IMPACT adults employed	1,694	1,666	624	171.47%
Total number of adults ineligible due to employment	3,413	2,126	4,478	-23.78%
Number of TANF adults ineligible due to employment	59	47	22	168.18%
Number of SNAP adults ineligible due to employment	3,354	2,079	4,456	-24.73%

IMPACT Caseloads
(SNAP, TANF, Total Caseload)



Note:

All data July 2014 and following will be broken out according to the new DFR region structure effective July 1 2014.