



DIVISION OF FAMILY RESOURCES

Statewide Monthly Management Report August 2022

State of Indiana

Eric Holcomb
Governor

Family and Social Services Administration

Dan Rusyniak, MD
Secretary

Division of Family Resources

Adrienne Shields
Director

For questions regarding data on this report contact:
office.Communications@fssa.IN.gov



State of Indiana

Published October 2022



DIVISION OF FAMILY RESOURCES

Monthly Management Report

Reporting Month: August 2022

Location: Statewide

TEMPORARY ASSISTANCE FOR NEEDY FAMILIES (TANF)

Child-Only and One-Parent Families	August 2022	July 2022	August 2021	Annual Change
Number of families receiving TANF Grants	3,886	3,760	6,397	-39.25%
Total number of grant recipients	7,699	7,440	14,482	-46.84%
Number of adult grant recipients	735	690	2,987	-75.39%
Number of child grant recipients	6,964	6,750	11,495	-39.42%
Total payments	\$2,634,710	\$722,998	\$6,701,893	-60.69%
Average payment per case	\$678.00	\$192.29	\$1,047.66	-35.28%
Average payment per recipient	\$342.21	\$97.18	\$462.77	-26.05%
Number of cases with benefits reduced to zero	0	106	22	-100.00%
Number of recipients with benefits reduced to zero	0	203	23	-100.00%
Number of adult recipients with benefit reduced to zero	0	36	7	-100.00%
Number of child recipients with benefit reduced to zero	0	167	16	-100.00%

Two-Parent Families	August 2022	July 2022	August 2021	Annual Change
Number of families receiving TANF Grants	316	256	1,114	-71.63%
Total number of grant recipients	1,112	890	3,159	-64.80%
Number of adult grant recipients	427	331	918	-53.49%
Number of child grant recipients	685	559	2,241	-69.43%
Total payments	\$332,259	\$74,622	\$1,427,476	-76.72%
Average payment per case	\$1,051.45	\$291.49	\$1,281.40	-17.94%
Average payment per recipient	\$298.79	\$83.84	\$451.88	-33.88%
Number of cases with benefits reduced to zero	0	2	3	-100.00%
Number of recipients with benefits reduced to zero	0	10	4	-100.00%
Number of adult recipients with benefit reduced to zero	0	4	1	-100.00%
Number of child recipients with benefit reduced to zero	0	6	3	-100.00%

Note:

For August 2021, a one time payment of \$400 per recipient was included in the Total payments and Average payments. TANF section rules changed to reflect Federal reporting logic effective September 2021. For August 2022, a one-time payment of \$269 per recipient was included in the Total payments and Average payments.

Source:



DIVISION OF FAMILY RESOURCES

Monthly Management Report

Reporting Month: August 2022

Location: Statewide

TANF - APPLICATIONS

	August 2022	July 2022	August 2021	Annual Change
Number of Applications	4,644	3,573	4,058	14.44%



DIVISION OF FAMILY RESOURCES

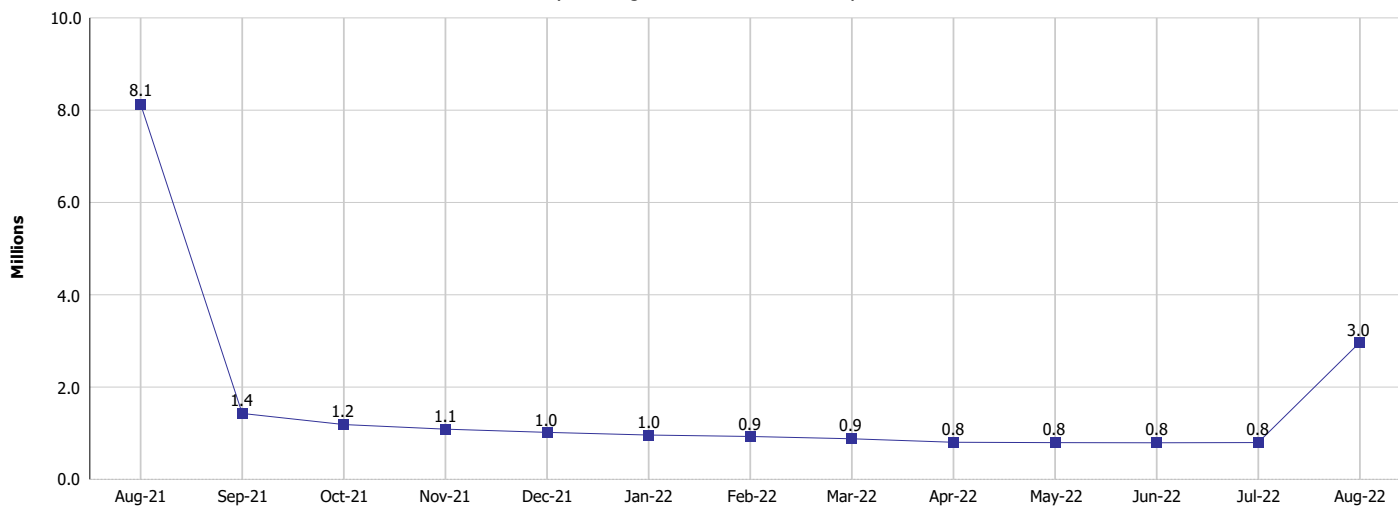
Monthly Management Report

Reporting Month: August 2022

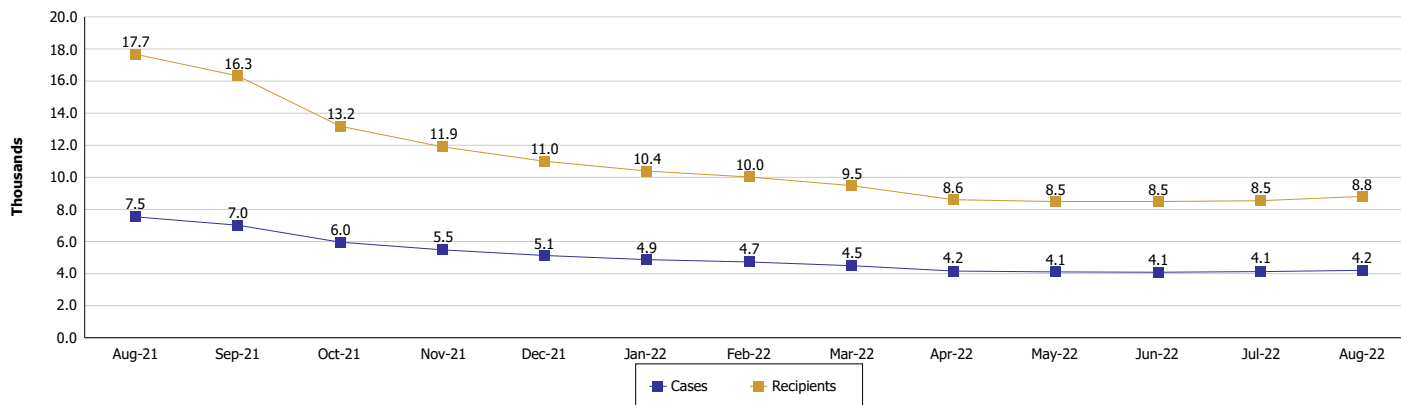
Location: Statewide

TEMPORARY ASSISTANCE FOR NEEDY FAMILIES (TANF)

TANF Cash Assistance (TANF Regular and TANF Two-Parent)



TANF Cases and Recipients (TANF Regular and TANF Two-Parent)



Note:

For August 2021, a one time payment of \$400 per recipient was included in the Total payments and Average payments. TANF section rules changed to reflect Federal reporting logic effective September 2021. For August 2022, a one-time payment of \$269 per recipient was included in the Total payments and Average payments.



DIVISION OF FAMILY RESOURCES

Monthly Management Report

Reporting Month: August 2022

Location: Statewide

SUPPLEMENTAL NUTRITION ASSISTANCE PROGRAM (SNAP)

	August 2022	July 2022	August 2021	Annual Change
Total issuance	\$102,549,875	\$101,529,156	\$143,491,661	-28.53%
Number of households receiving SNAP benefits	290,192	288,743	291,435	-0.43%
Number of recipients	614,024	613,106	619,201	-0.84%
Average issuance per household	\$353.39	\$351.62	\$492.36	-28.23%
Average issuance per recipient	\$167.01	\$165.60	\$231.74	-27.93%
Number of Applications	25,413	21,030	23,530	8.00%



DIVISION OF FAMILY RESOURCES

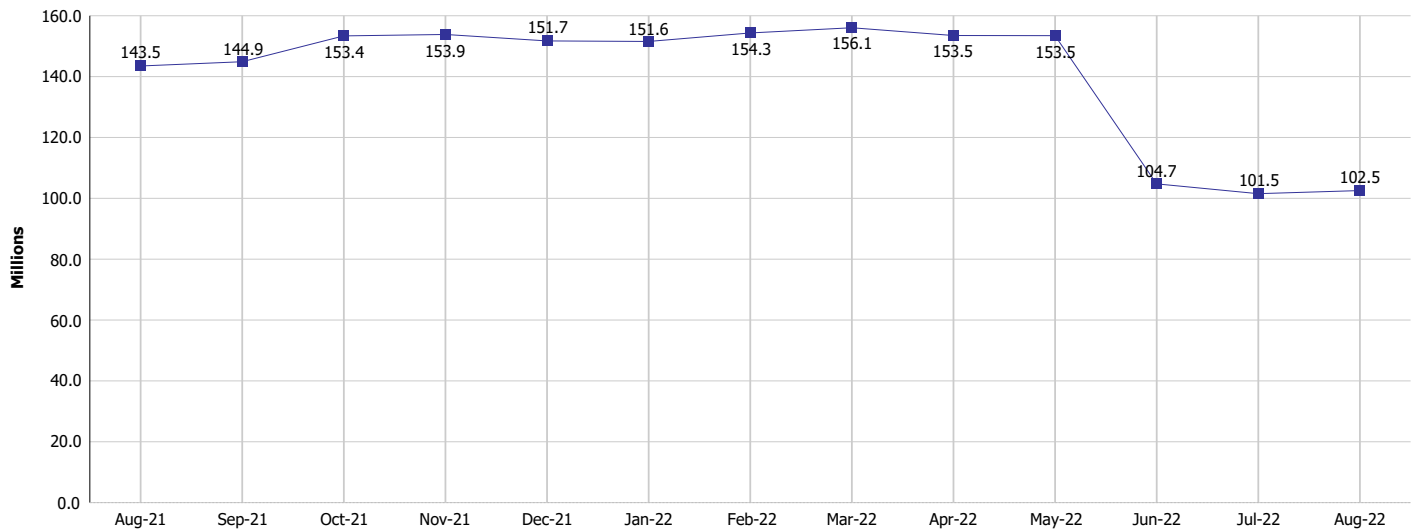
Monthly Management Report

Reporting Month: August 2022

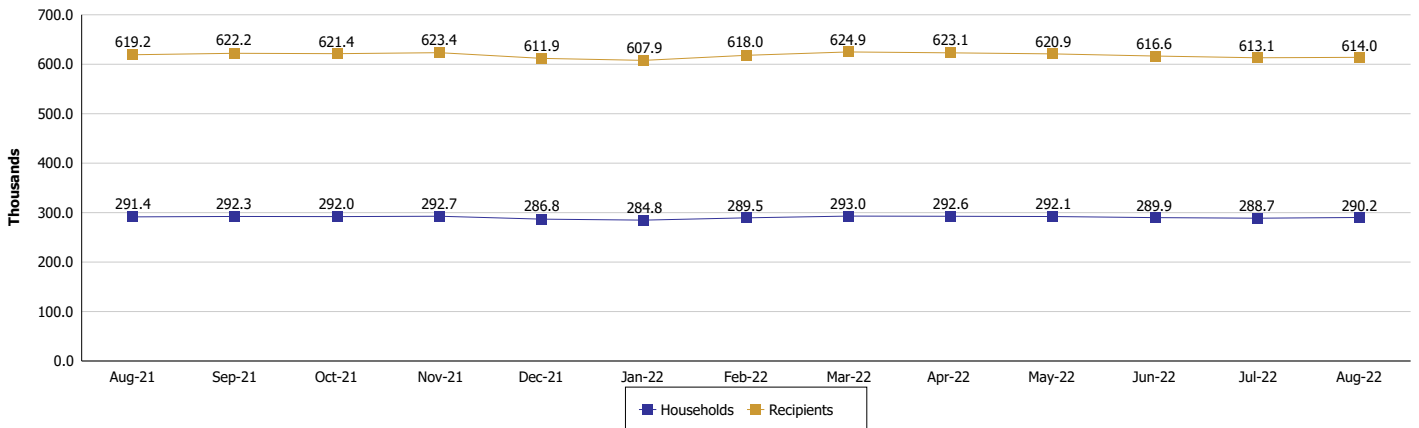
Location: Statewide

SUPPLEMENTAL NUTRITION ASSISTANCE PROGRAM (SNAP)

SNAP Issuance



SNAP Households and Recipients



Note:

Run Date: Oct 6, 2022



DIVISION OF FAMILY RESOURCES

Monthly Management Report

Reporting Month: August 2022

Location: Statewide

HIP 2.0 and SNAP

	August 2022	July 2022	August 2021	Annual Change
Total HIP 2.0 Members	804,385	795,550	706,930	13.79%
HIP Members also SNAP Recipients	186,790	185,660	185,095	0.92%
Percentage HIP Members SNAP Recipients	23.2%	23.3%	26.2%	-2.96
HIP Members SNAP ABAWDs	11,435	10,600	0	0%
Percentage HIP Members SNAP ABAWDs	1.4%	1.3%	0	1.4



DIVISION OF FAMILY RESOURCES

Monthly Management Report

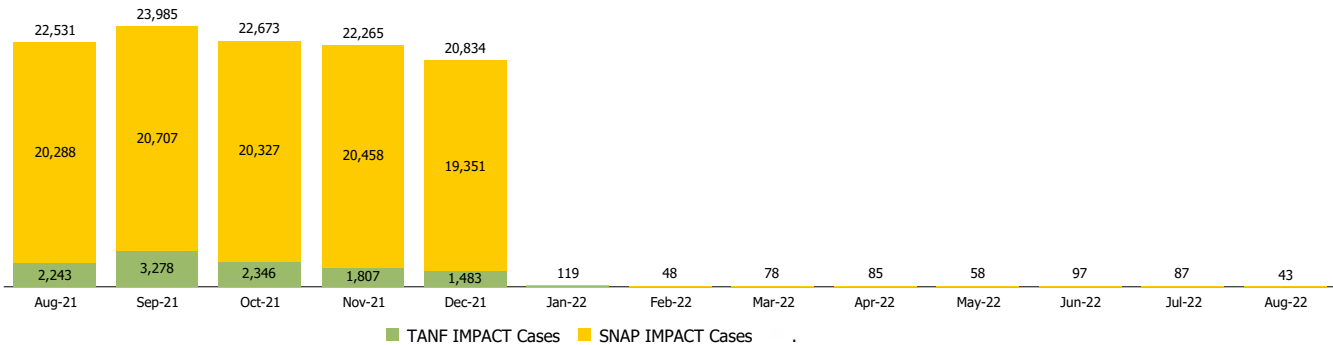
Reporting Month: August 2022

Location: Statewide

INDIANA MANPOWER PLACEMENT AND COMPREHENSIVE TRAINING (IMPACT)

	August 2022	July 2022	August 2021	Annual Change
Number of IMPACT cases	43	87	22,531	-99.81%
Number of TANF IMPACT adults	11	34	2,243	-99.51%
Number of SNAP IMPACT Cases	32	53	20,288	-99.84%
Total number of adults employed	3,891	2,740	3,413	14.01%
Number of TANF IMPACT adults newly employed (within past 30 days)	47	39	187	-74.87%
Number of SNAP IMPACT adults employed	3,844	2,701	3,226	19.16%
Total number of adults ineligible due to employment	1,298	2,210	2,415	-46.25%
Number of TANF adults ineligible due to employment	15	20	14	7.14%
Number of SNAP adults ineligible due to employment	1,283	2,190	2,401	-46.56%

IMPACT Caseloads
(SNAP, TANF, Total Caseload)



Note:

Effective January 2022, these numbers have been adjusted to reflect only those actually participating in IMPACT.