

# **2015 Changes to Provider Eligibility Standards**

Impacting child outcomes and making a  
difference through the 2015 changes to  
the  
CCDF Provider Eligibility Standards (PES)  
(IC12-17.2-3.5)

**An introduction to the law**

- PES requirements are the standards that unlicensed providers must meet in order to receive payment through the Child Care Development Fund (CCDF) program

**What are the Provider Eligibility Standards (PES)**

- During the 2013 General Assembly session additional requirements were added to IC12-17.2-3.5 and signed into law
- Some changes including national criminal history checks, minimum age for caregivers and transportation safety, came into effect July 1, 2014
- Remaining changes came into effect July 1, 2015

**When did the requirements become law?**

You must meet the new requirements if you receive CCDF funds and you are:

- An Unlicensed Registered Ministries
- A legally licensed exempt (LLEP) Home
- A legally licensed exempt (LLEP) Center

**Who is impacted?**

You are not impacted by these changes if you do not take CCDF funds or if you are licensed.

- Unlicensed Registered Ministries that DO NOT take CCDF
- Licensed Homes
- Licensed Centers

**Who is not impacted-**

Why are these changes  
so important?

CCDF is an essential tool to the two-generational approach to poverty reduction

The CCDF voucher program:

- Supports the parent(s) in reaching economic self sufficiency
- Supports the child's growth and development for better future health, academic and economic outcomes

**The Purpose of the CCDF Program**



Child care is the number one barrier to low income families getting to work and working enough to be economically self sufficient. Families receiving vouchers must be employed, attending school/training or participating in the TANF impact program in order to find work.

By making child care affordable parent(s) can work or obtain the skills necessary to work.

**Supporting Families**

# **You make a difference!**

A high quality child care program makes a difference for children by:

- keeping them safe
- promoting good health
- providing learning environments

**Impacting Children's Outcomes**

Goal of the new law is to INCREASE THE QUALITY of child care so that children are:

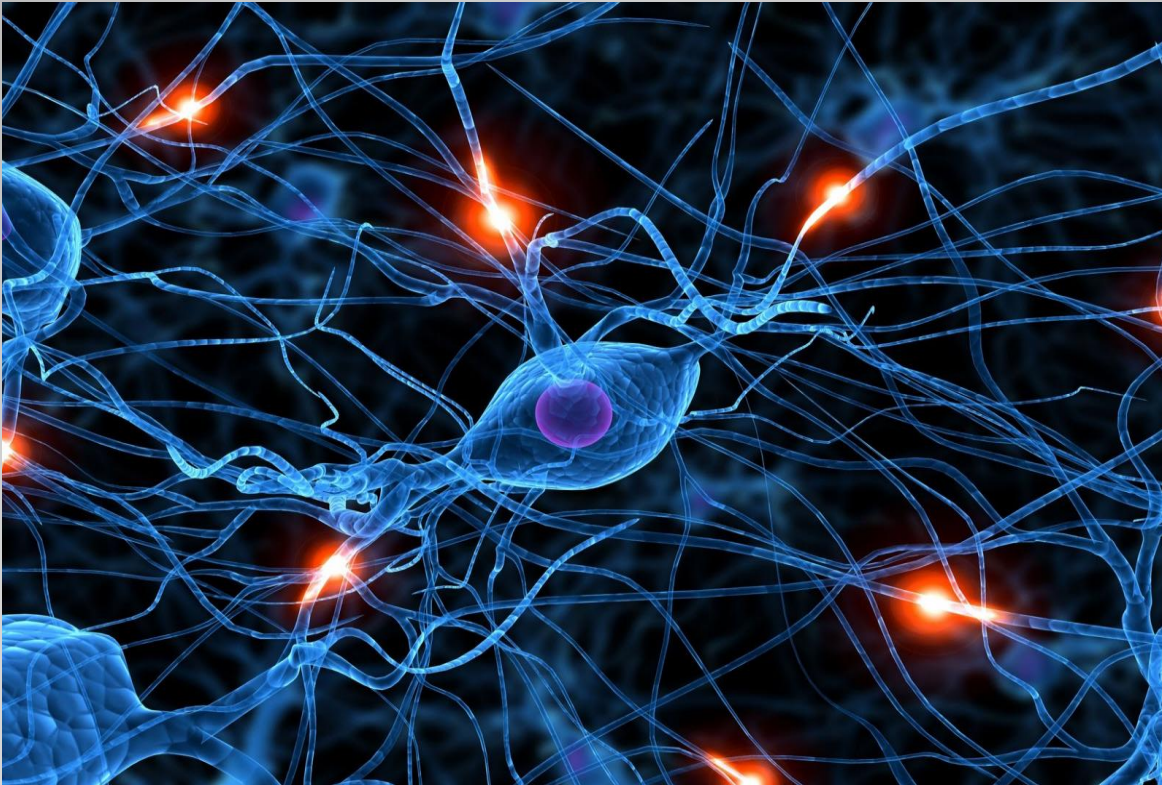
- Safe
- Healthy
- Ready for school

**Goal of the PES laws:**

- A child's brain development is not genetically hardwired, rather is dependent on the child's environment and the responsiveness of the child's caregivers.



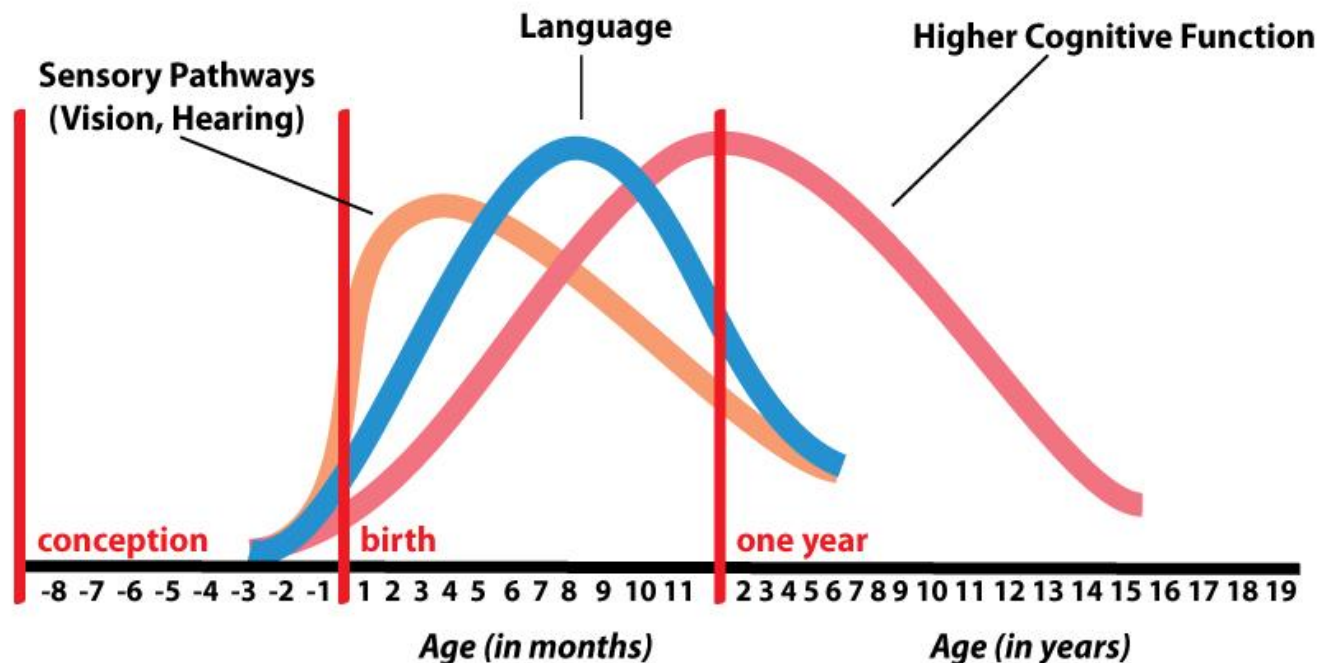
An infant forms up to 700 new neurological connections  
each second



90% of all brain development occurs before the age of five

## Human Brain Development

Synapse Formation Dependent on Early Experiences



There is an effective way to decrease the achievement gap among low income children....

by providing access to rich learning environments much sooner than standard school entry for children who live in disadvantaged environments.



There are five key areas that are changing under IC12-17.2-3.5

1. Staff ratios/group sizes
2. Training requirements
3. Nutrition
4. Daily activities
5. Policies for a safe environment

**What are the changes?**



## Staff to child ratios and group sizes:

- Ratios- the number of qualified adults that must be present based on the number of children in the group
- Group size is the number of children who routinely work, learn, eat, sleep, and play together inside and outside a facility where a provider operates a child care program

## Staff to Child Ratios

- Most important indicator of quality
- Impacts child outcomes significantly
- Improves safety, reduces accidents and injuries
- Lowers the likelihood of cases of abuse and neglect
- Peer interaction with the same group of children on regular basis promotes the social emotional development needed for school readiness
- Adequate staff and appropriate group sizes minimizes classroom management issues and promotes learning

**Why are staff to ratios important?**

## Things to remember:

- All children enrolled in the program count in the ratios and the group sizes- not just children receiving a CCDF voucher
- Programs that enroll 16 or fewer children follow the Licensed Home statutes
- Programs that enroll more than 16 children must follow Licensed Center statutes for ratios and group sizes

**Staff to child ratios/group size**

## Things to remember

- Not a square footage requirement- although square footage can become a safety issue
- Groups do not have to be in separate classrooms, providers may utilize other effective means
- Infants and Toddlers must be kept protected from harm from older children
- May require onsite technical assistance

**Group Size**

- Staff counted in staff to child ratios must receive 12 clock hours of training each year.

**On-going training requirements**

- Research has shown that the education and training of caregivers/teachers is directly related to positive child outcomes
- Ongoing training helps you understand children's developmental needs, including health and safety, social, emotional, cognitive and school readiness, and how to best support these needs
- Ongoing training also helps you understand how to identify developmental delays and how to work with families to best support each child

**Why is this important?**

## Things to remember:

- Training must be relative to the age of the children caregiver/teacher/volunteer is caring for
- Hours will be prorated for the first year based on month of the inspection-training within the past 12 months will count
- New staff hours prorated based on individual start date
- First aid/CPR can be counted in the twelve hours
- Same training will not be counted multiple times unless the training is designed as a refresher or recommended by consultant/coach to address observed issues (First Aid/CPR excluded)

# Training for Staff

## Things to remember if you are an LLEP Home Provider:

- If you are a relative of all the children enrolled in the child care program you may be exempt from on-going clock hour training.
- Be prepared to show that each child is a relative (birth certificates, other documentation)
- You must still take other required trainings such as CPR, First Aid, Child Abuse Detection and Prevention

**Training for LLEP Home Providers**



- Many resources are available including Training Central and your local CCR&R
- Look on [www.childcarefinder.in.gov](http://www.childcarefinder.in.gov) for other resources

**Free and Reduced Cost Trainings**

- If you are enrolled in non-formal CDA or other credit bearing coursework in Early Childhood or related subject matter- that time counts.
- Credit bearing training counts!  
1 credit hour= 16 clock hours

## **CDA and other Credit Bearing Courses**

You must provide nutritious, adequately timed meals and snacks and make drinking water available at all times.

**Nutrition**

- All children in care must receive food and drinking water
- Timing- not less than 2 hours but not more than 3.5 hours between meals and snacks- do not have to wake children up to feed them

## **Nutrition**

- Low income children are at a high risk for food insecurity
- Children cannot learn and cannot develop optimally without adequate nutrition- they cannot learn when they are hungry
- Hunger can lead to additional behavior/classroom management issues
- Water is critical for overall health and obesity prevention

**Why is this important?**

## Things to remember:

- Families can “brown bag” lunches, but providers must have a plan for times that children do not have a lunch and snacks
- Providers must plan for snacks that include at least two food groups
- Seconds should be available to children who request additional food

## Things to remember for infants:

- Parents can supply the formula/breast milk and must indicate the desired feeding schedule for their child-
- Each infant must have an individualized feeding schedules (provided by the parent(s)) and these plans are to be followed
- These plans should include the timing of the introduction of solid foods

- Child and Adult Food Care Program (CACFP) covers the cost of food and provides assistance with nutrition questions
- For more information on how to join go to: <http://www.doe.in.gov/nutrition/child-and-adult-care-food-program>

**CACFP**



- CCDF providers must make available daily activities that meets the developmental needs of the children in the child care program.

## **Schedule of Daily Activities**

- A rich learning environment and the presence of a responsive adult is key to a child's development
- Daily schedules reduce negative behaviors and classroom management issues
- Build a routine that provides security and builds trust

**Why is this important?**

## Things to remember:

- You must post your written schedule and complete the daily activities
- Activities must fit the age and developmental needs of each child
- Should take into consideration the number of children in care
- Must include active and quiet play, indoor and outdoor play time
- Nap and rest time as appropriate must be included

## **Daily Activities**

## Things to remember:

- The daily schedule should be predictable
- Should not be overly rigid but allow children some flexibility
- Adequate supplies and equipment must be present to meet the development needs of the children
- There are no specific requirements for the amount of time spent on each activity but should be balanced to meet children's developmental needs

# **Daily Activities**

Provider shall have, and maintain compliance with, a written policy describing the practice of the provider concerning the following:

- Safe conditions in the facility and on the grounds.
- Safety of motor vehicles used to transport children.

## **Safety Policies**

- Prevents accidents and injuries
- Provides clear plans on how to respond in an emergency

**Why is this important**

## Things to remember:

- You must post the written policy and must follow the policy to keep the facility and the grounds safe

**Safety Policies**

- Trainings available through your local Child Care Resource and Referral agencies
- OECOSL consultants

**Need Help?**



- These standards are for all children in the child care program- not just the CCDF children
- You are required to be in compliance at all times

**Keep in mind:**

- Your consultant will check for compliance during your normal inspections
- All standards are effective as of July 1, 2015
- Complaints on these standards will be investigated and non-compliances will be cited

**Meeting the new standards:**

During your first inspection with the new standards:

- If you are cited for a non-compliance of one of these five new requirements, during an inspection or complaint visit, you will be given time to complete and implement a plan of correction
- If you fail to respond with a plan to correct the non-compliances or fail to make the necessary changes within the timeframe allowed, you will receive a Notice of Order and be decertified from the CCDF program.
- Citations for non-compliance with the standards that were in existence prior to July 1, 2015 will be handled as usual with the issuance of a NOO.

**Making the necessary changes:**

Failure to meet these new standards will not impact an unlicensed provider's ability to operate- but if these standards are not met, a provider may not receive public funds through CCDF

This also does not impact a provider's ability to provide religious instruction or religious activities

- Questions?

**Questions and Answers**