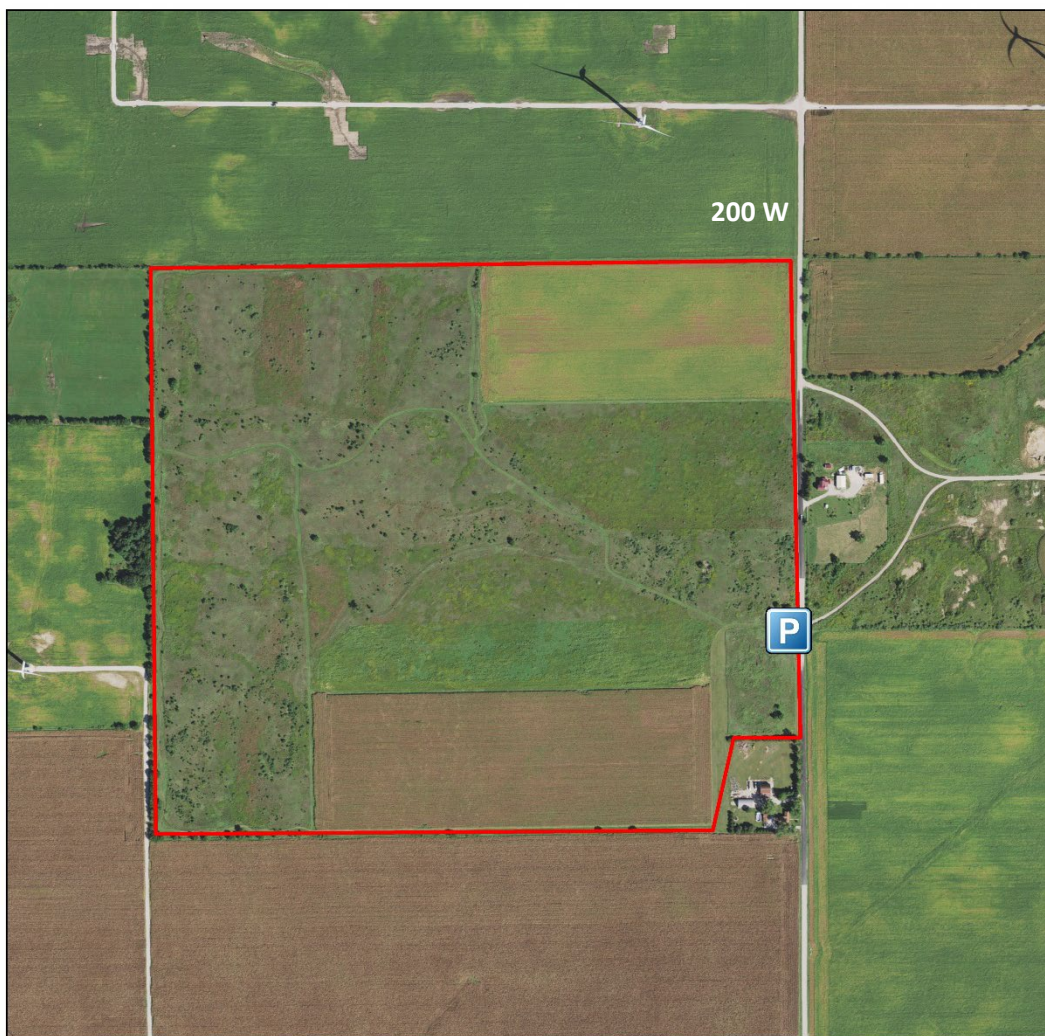


Watland Game Bird Area

Benton County, Indiana



Watland Game Bird Area is a 145-acre property. It was purchased by the Division of Fish & Wildlife in 1994 with Game Bird Habitat Stamp funds. The site is predominantly grass with some small agricultural fields.

Access is by written permit only and is awarded only for hunting opportunities, research, and volunteer conservation work. No other access is granted. Call Willow Slough FWA at 219-285-2704 for more information.

Directions: From Fowler, go west on S.R. 18 approximately 2 miles to 200 W. Turn north onto 200 W. and travel for ½ a mile. The property will be on the west side of the road. Park by the wooden sign.

GPS coordinates for the parking area: (40.631933, -87.362595). All boundaries on the map are approximate.