

Appendix A

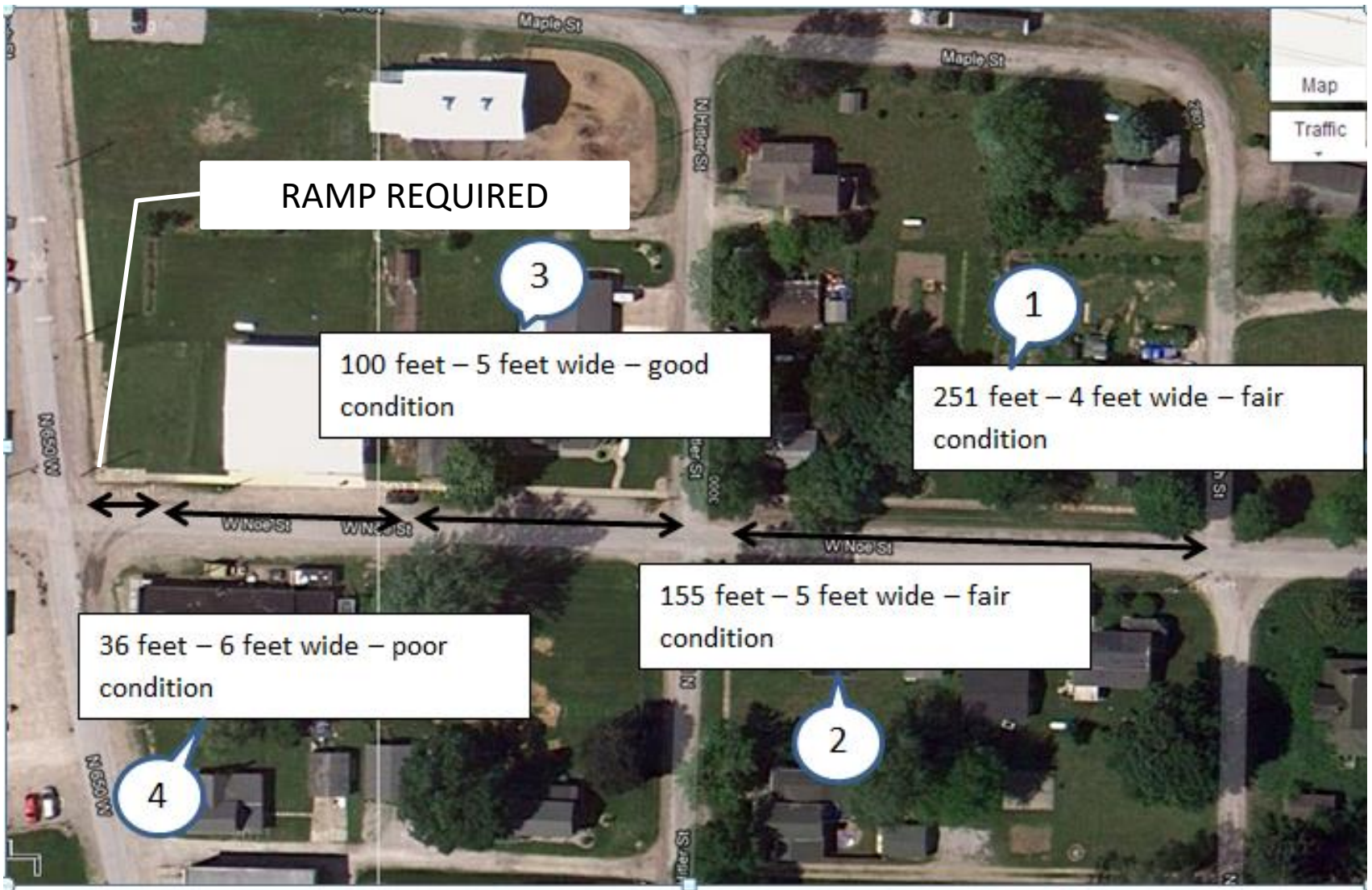
Sidewalk and Ramp Survey

Noble County Community of Kimmell

ADA Sidewalk Assessment Report



KIMMELL SIDEWALKS



Kimmel 1-2-3-4



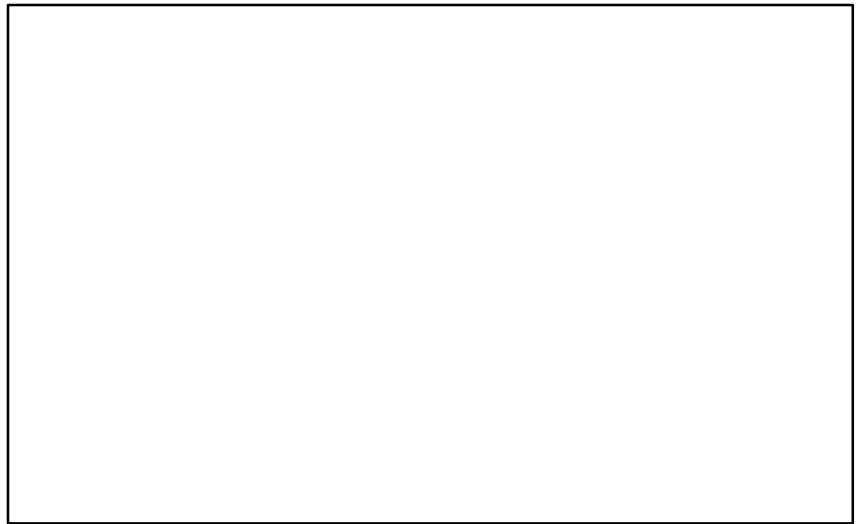
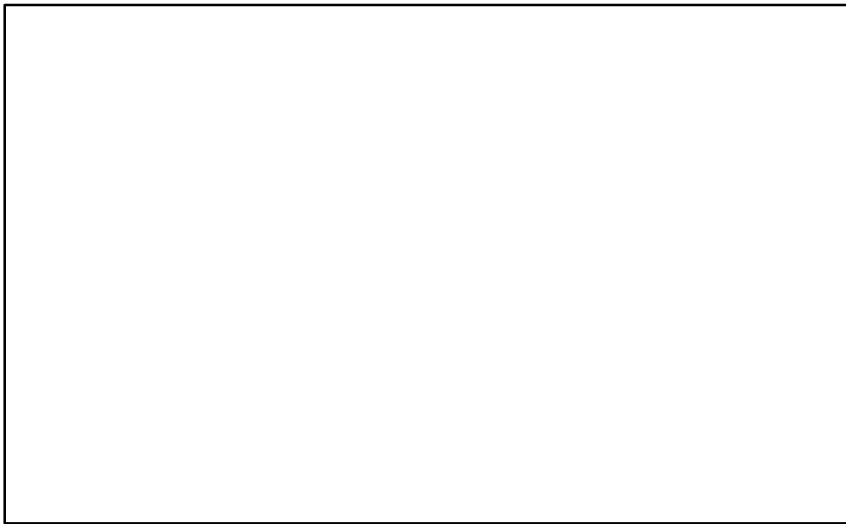
KIMMELL - SITE #1 & 2



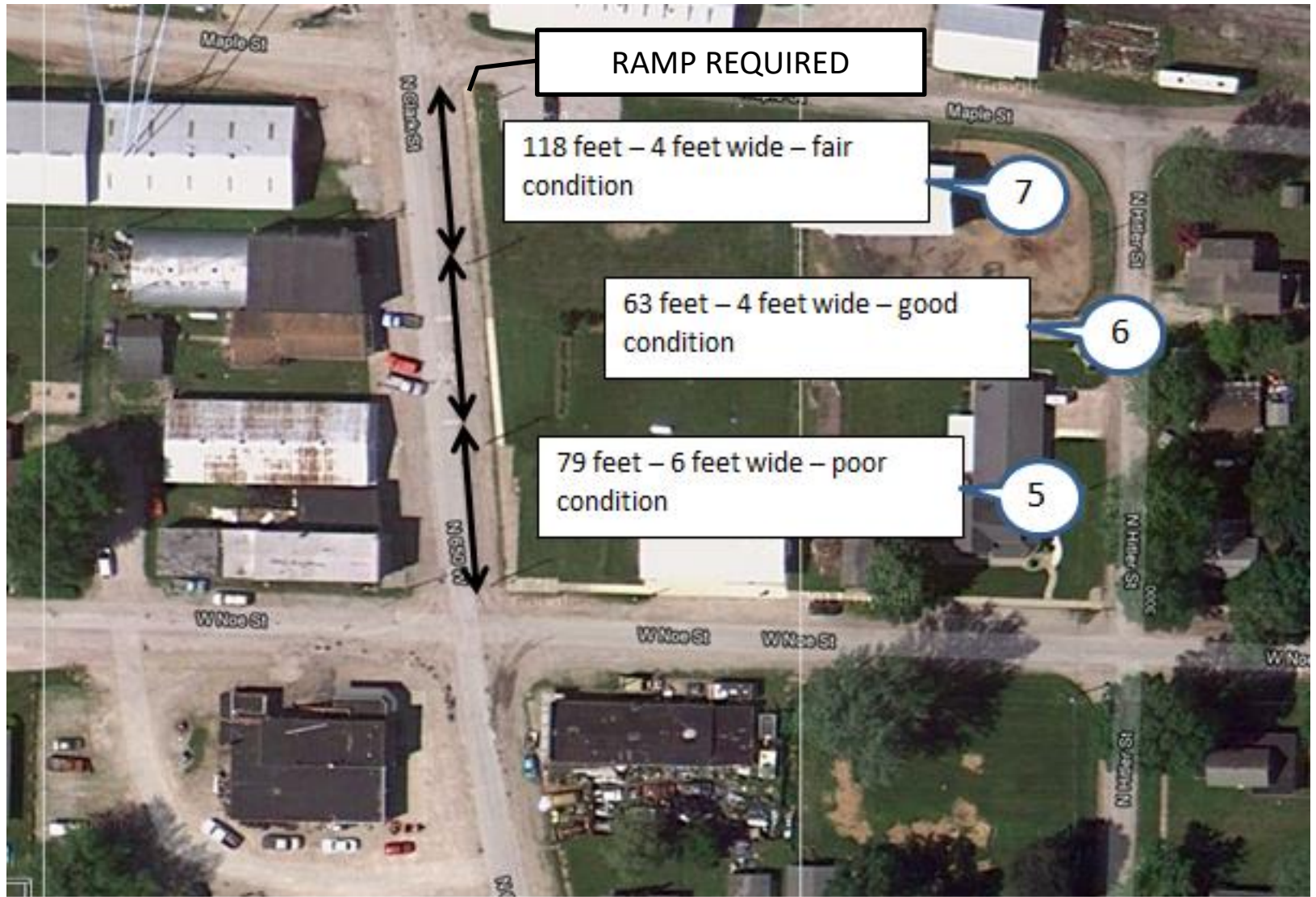
KIMMELL - SITE #1 & 2



KIMMELL - SITE #3 & 4



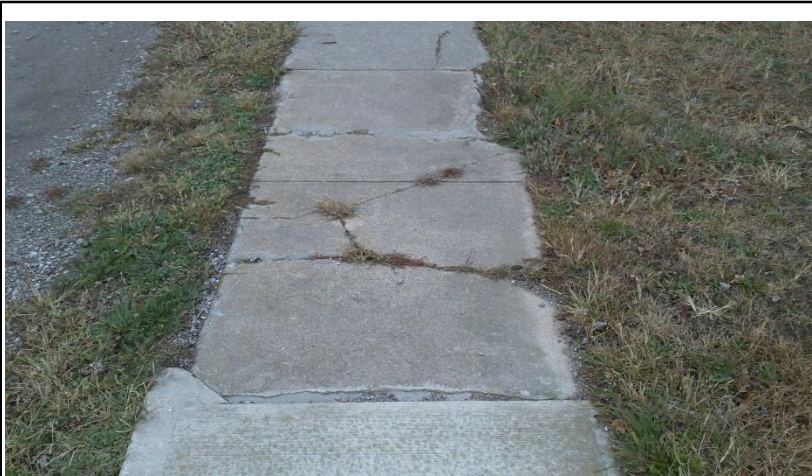
KIMMELL - SITE #3 &4



Kimmel 5-6-7



KIMMELL - SITE #5 & 6



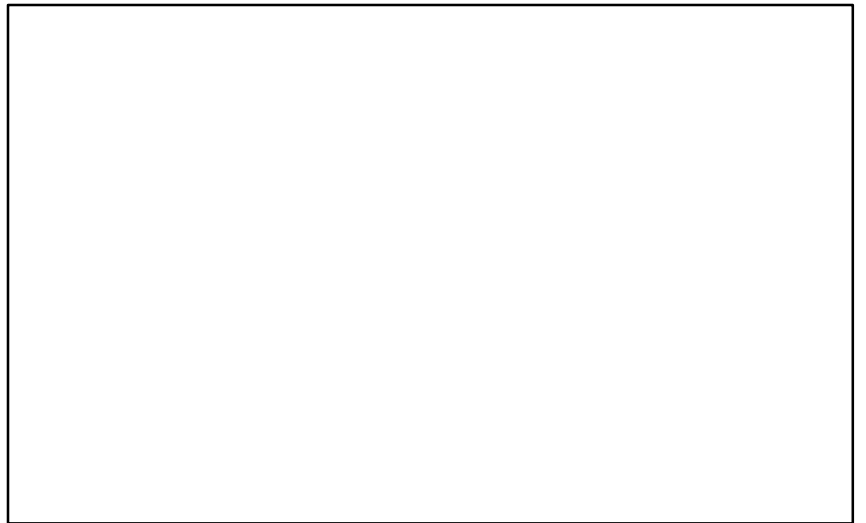
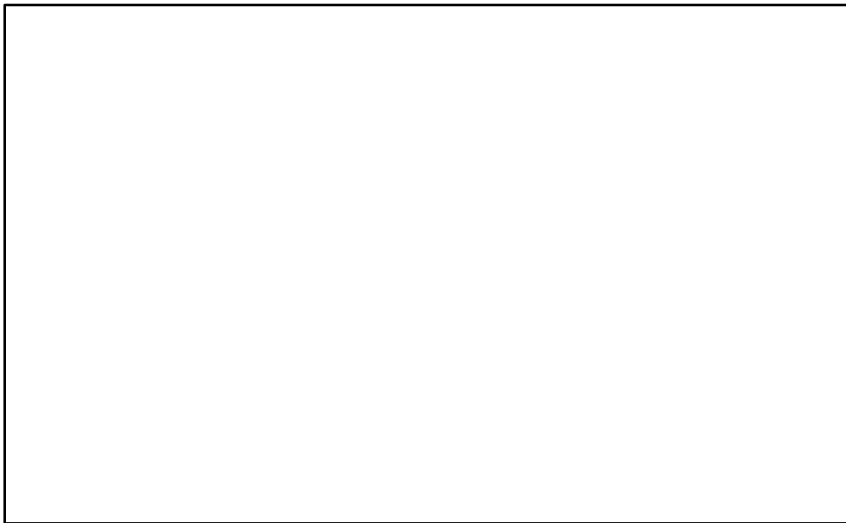
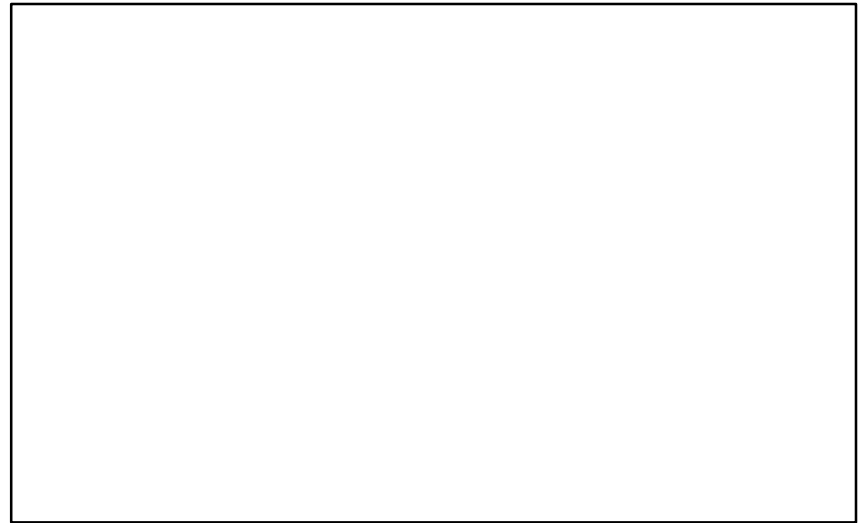
KIMMELL - SITE #6 &7



Kimmel 8



KIMMELL - SITE #8



KIMMELL - SITE #8



Kimmel 9-10-11-12-13



KIMMELL - SITE #9



KIMMELL - SITE #10



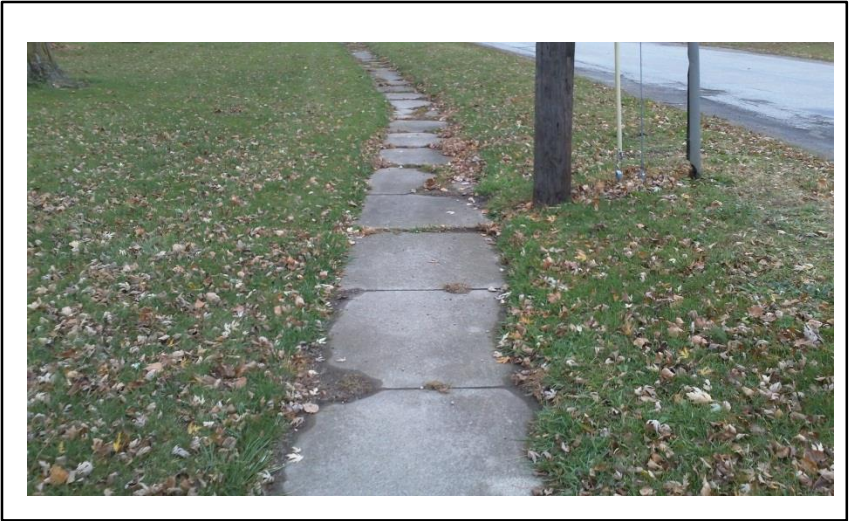
KIMMELL - SITE #11



KIMMELL - SITE #11



KIMMELL - SITE #12



KIMMELL - SITE #12



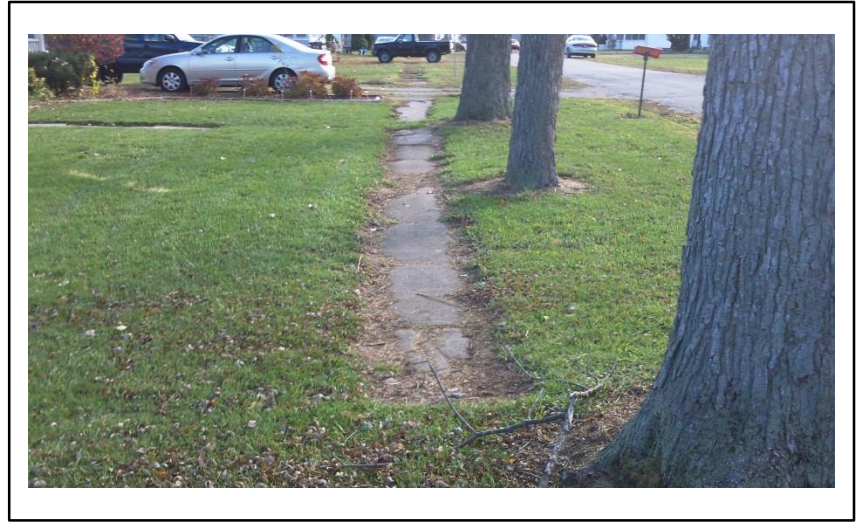
KIMMELL - SITE #13



KIMMELL - SITE #13



Kimmel 14



KIMMELL - SITE #14



KIMMELL - SITE #14



KIMMELL - SITE #14



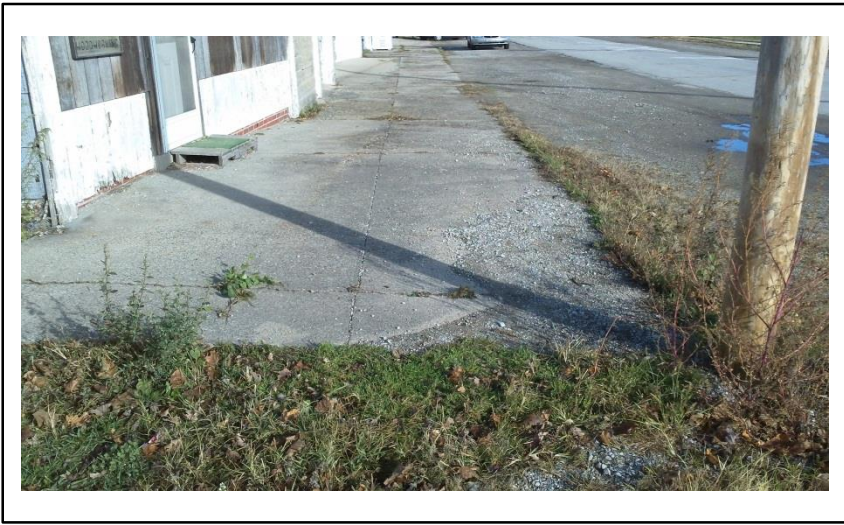
KIMMELL - SITE #14



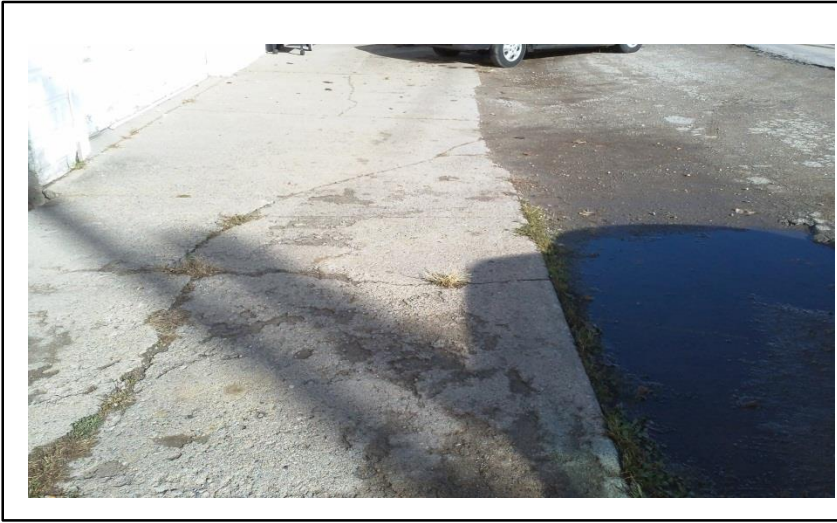
KIMMELL - SITE #14



Kimmel 15



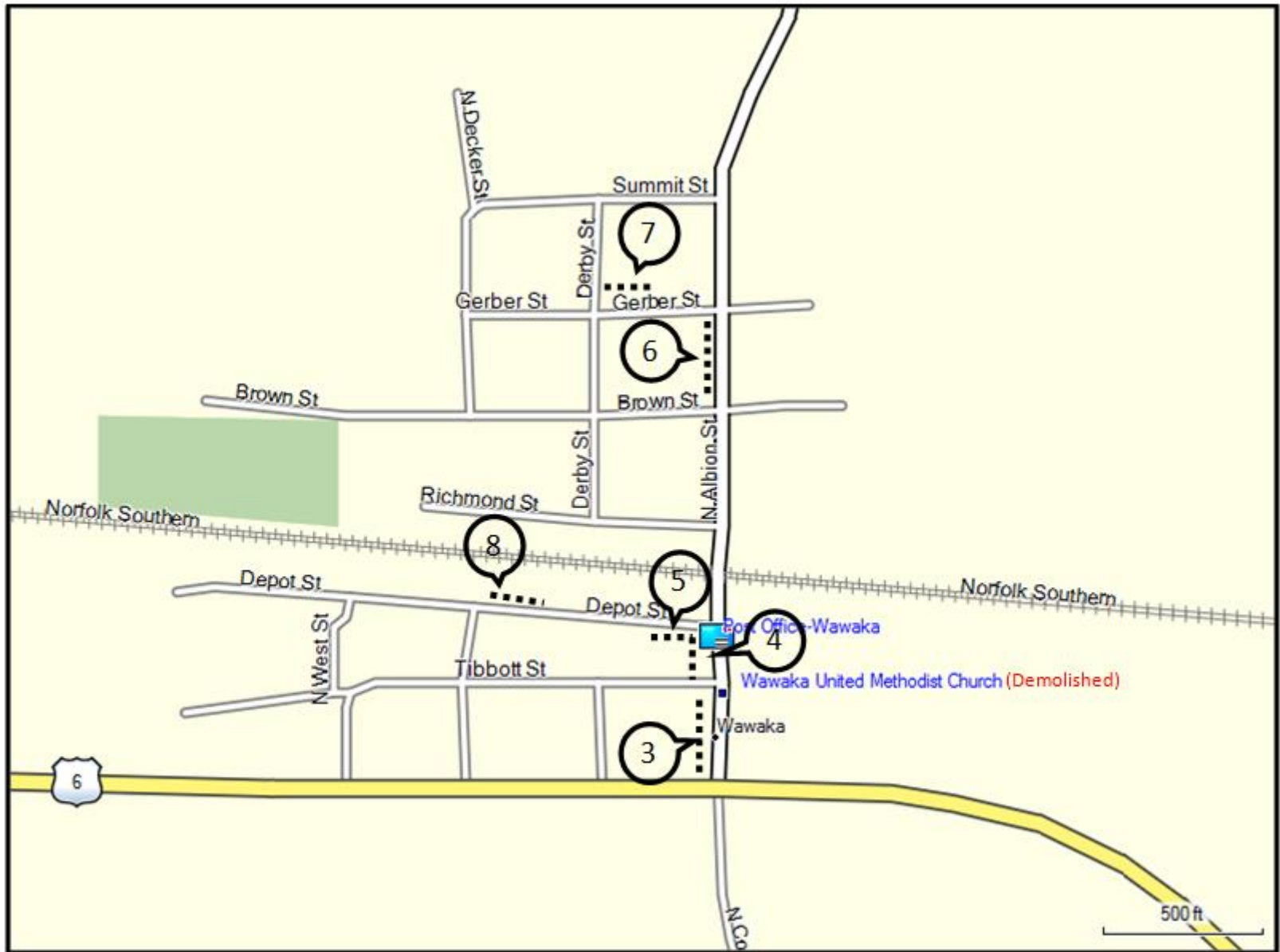
KIMMELL - SITE #15



KIMMELL - SITE #15

Noble County Community of Wawaka

ADA Sidewalk Assessment Report



WAWAKA SIDEWALK - RAMP MAP



Wawaka 3



WAWAKA - SITE #3



153 feet – 5 feet wide – excellent condition (2016)

5

ADA Ramp - excellent condition (2016)

5a

118 feet – 5 feet wide – excellent condition (2016)

4

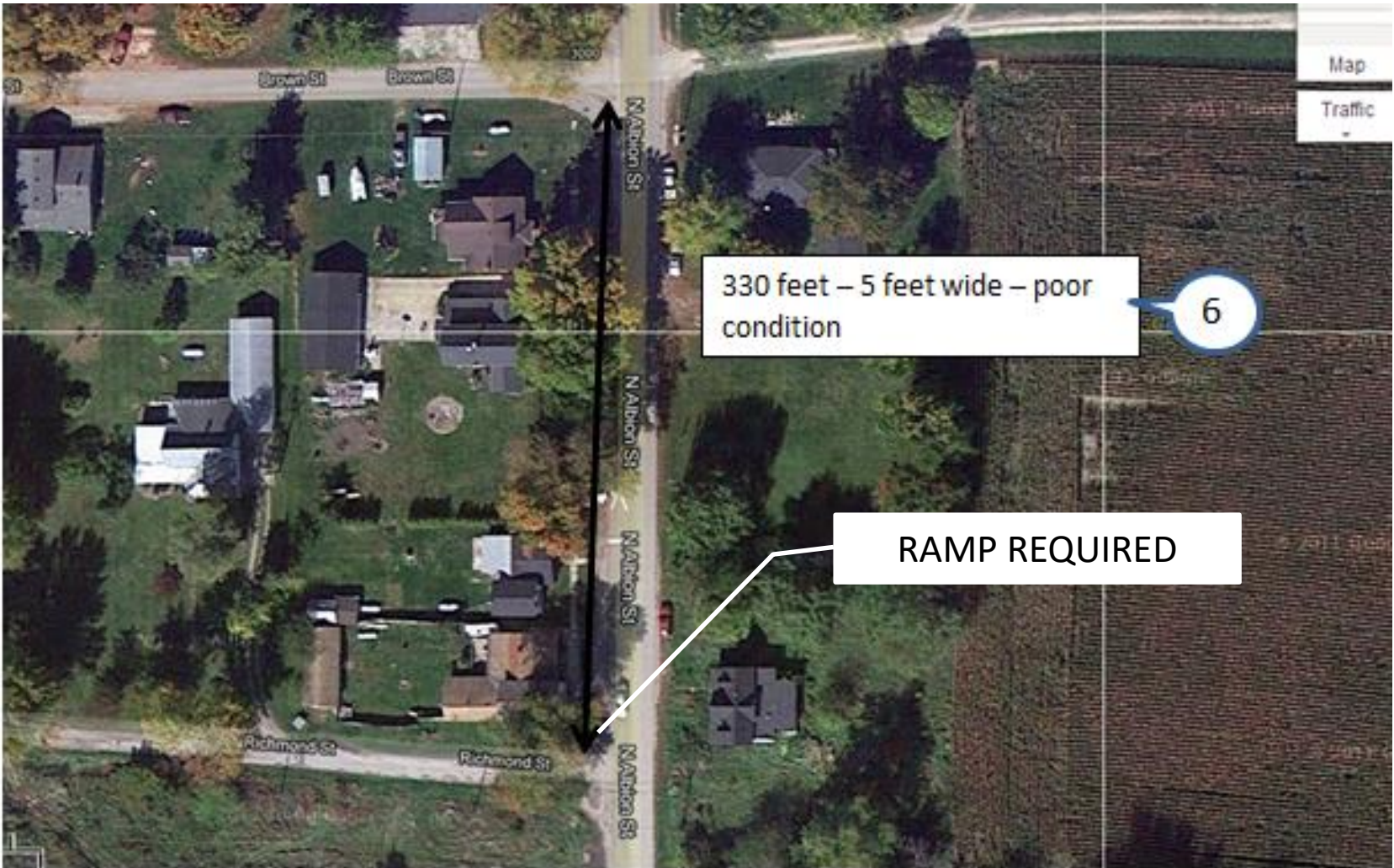
ADA Ramp - excellent condition (2016)

4a

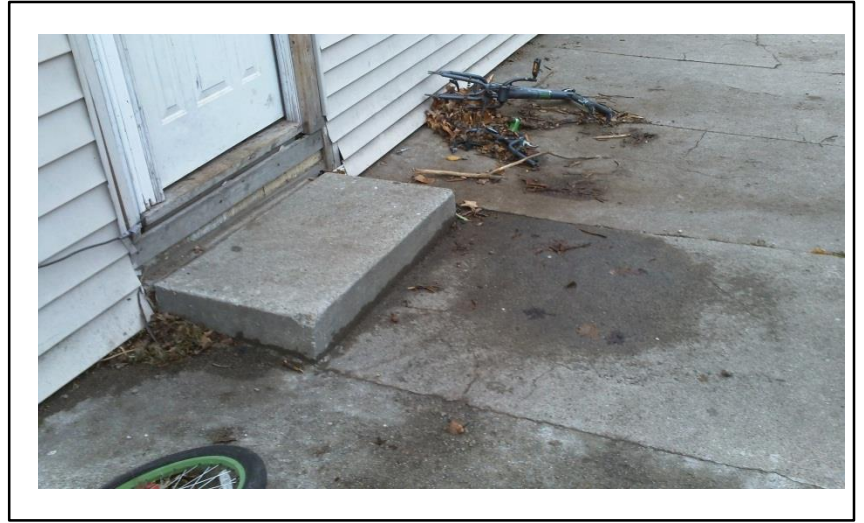
Wawaka 4-5



WAWAKA - SITE #4&5



Wawaka 6



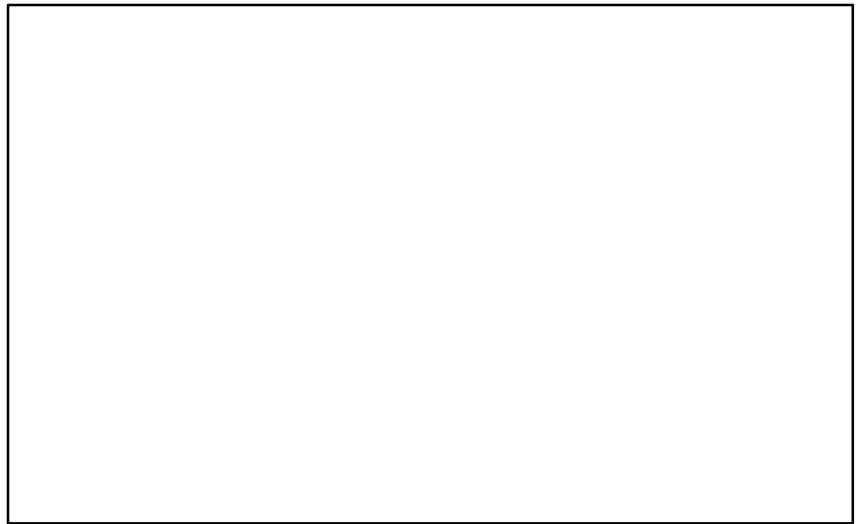
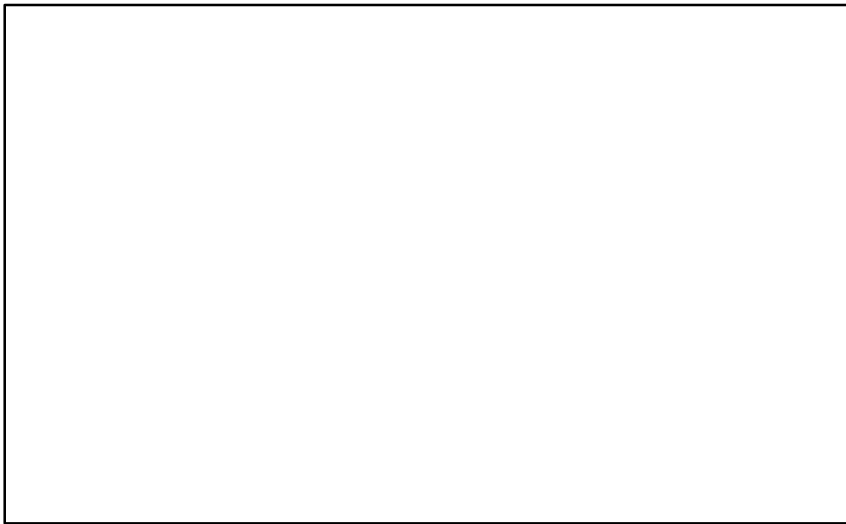
WAWAKA - SITE #6



WAWAKA - SITE #6



WAWAKA - SITE #6

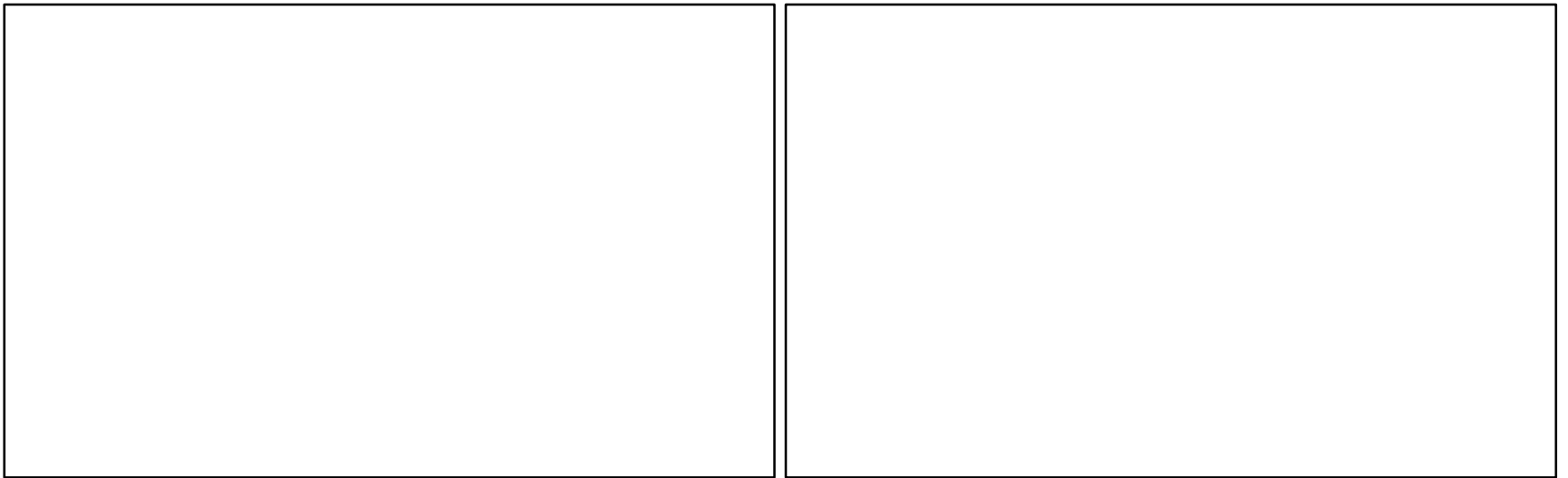
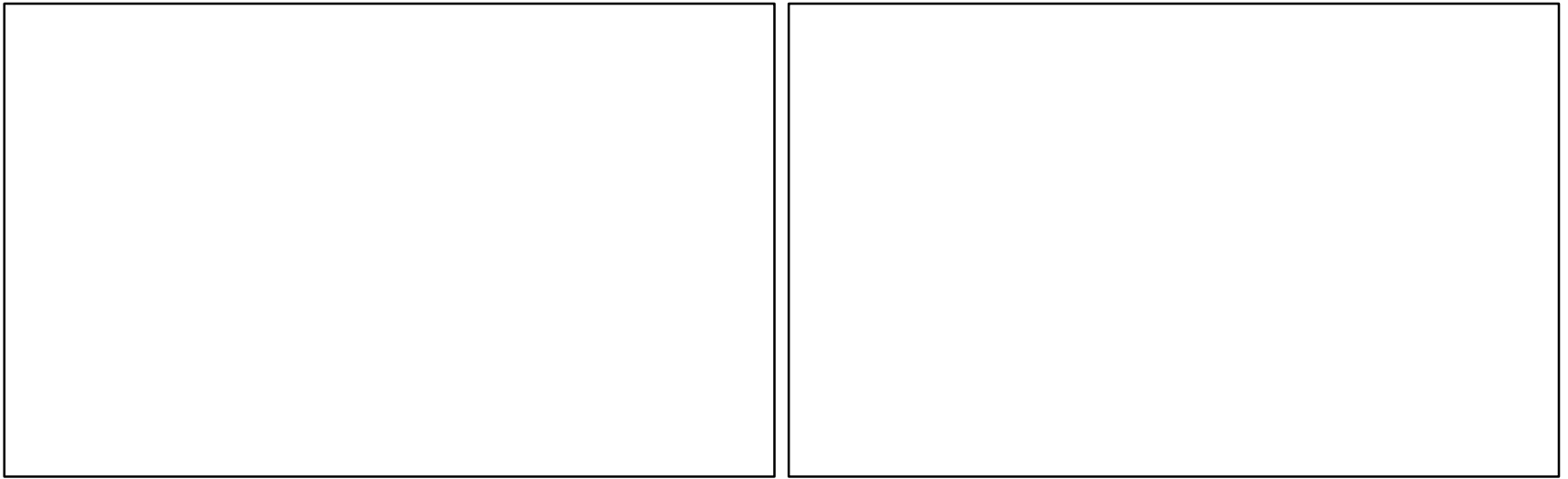


WAWAKA - SITE #6



50 feet - 5 feet wide - poor

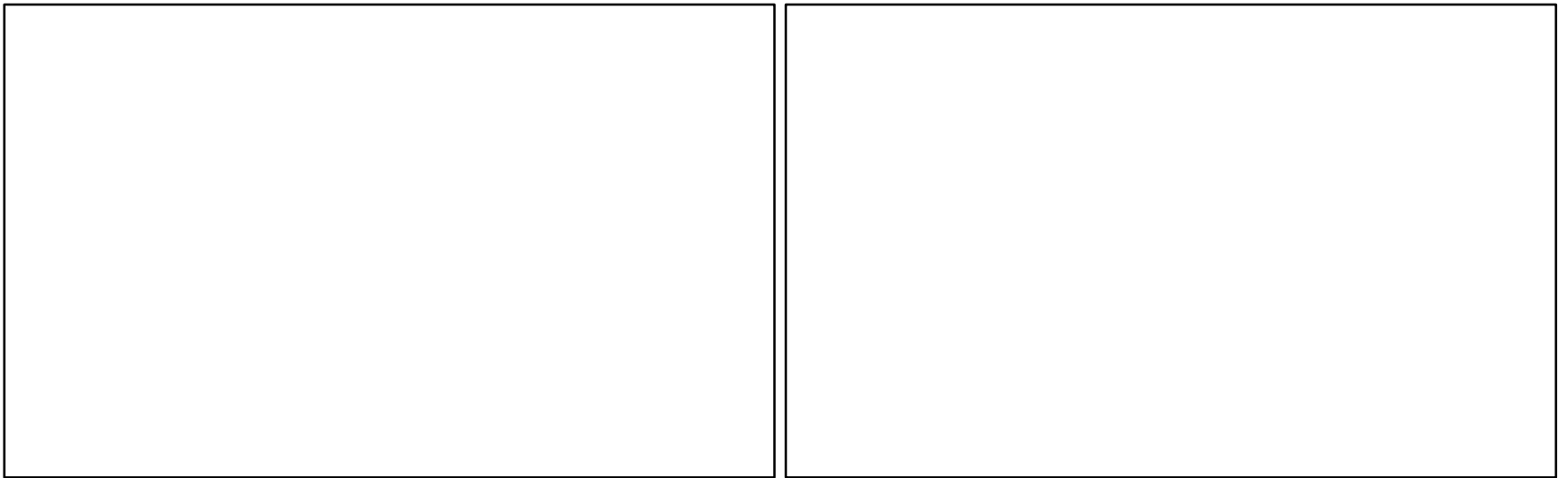
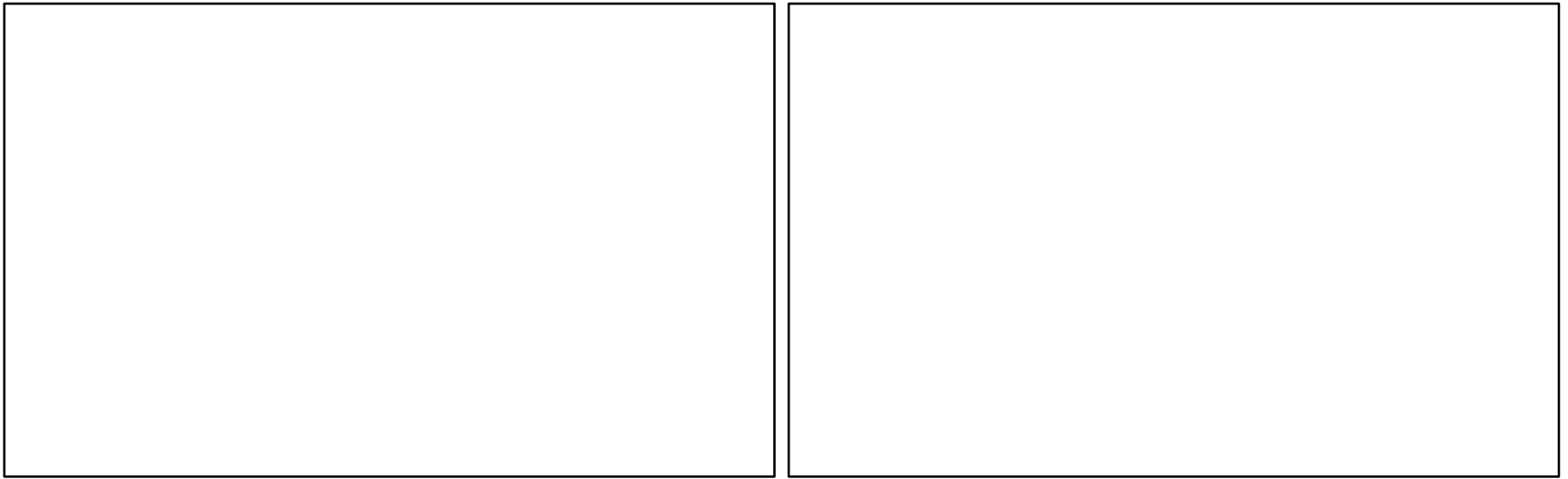




WAWAKA - SITE #7



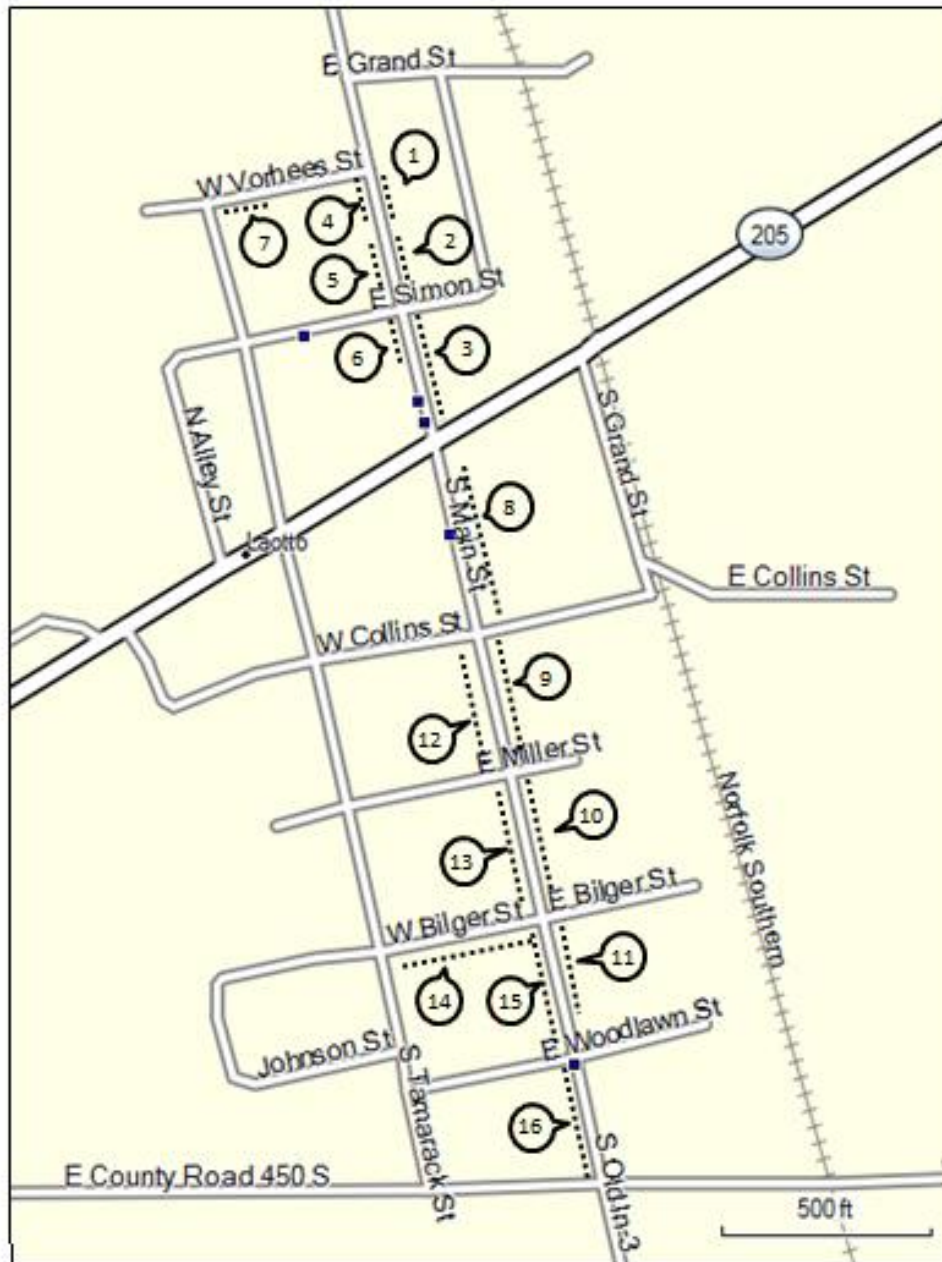
Wawaka 8



WAWAKA - SITE #8

Noble County Community of LaOtto

ADA Sidewalk Assessment Report



LAOTTO SIDEWALKS



LaOtto 1 & 2



LaOtto - Site 1 & 2



3a ADA Ramp – excellent condition (2018)

3 250 feet – 5 feet wide – excellent condition (2018)



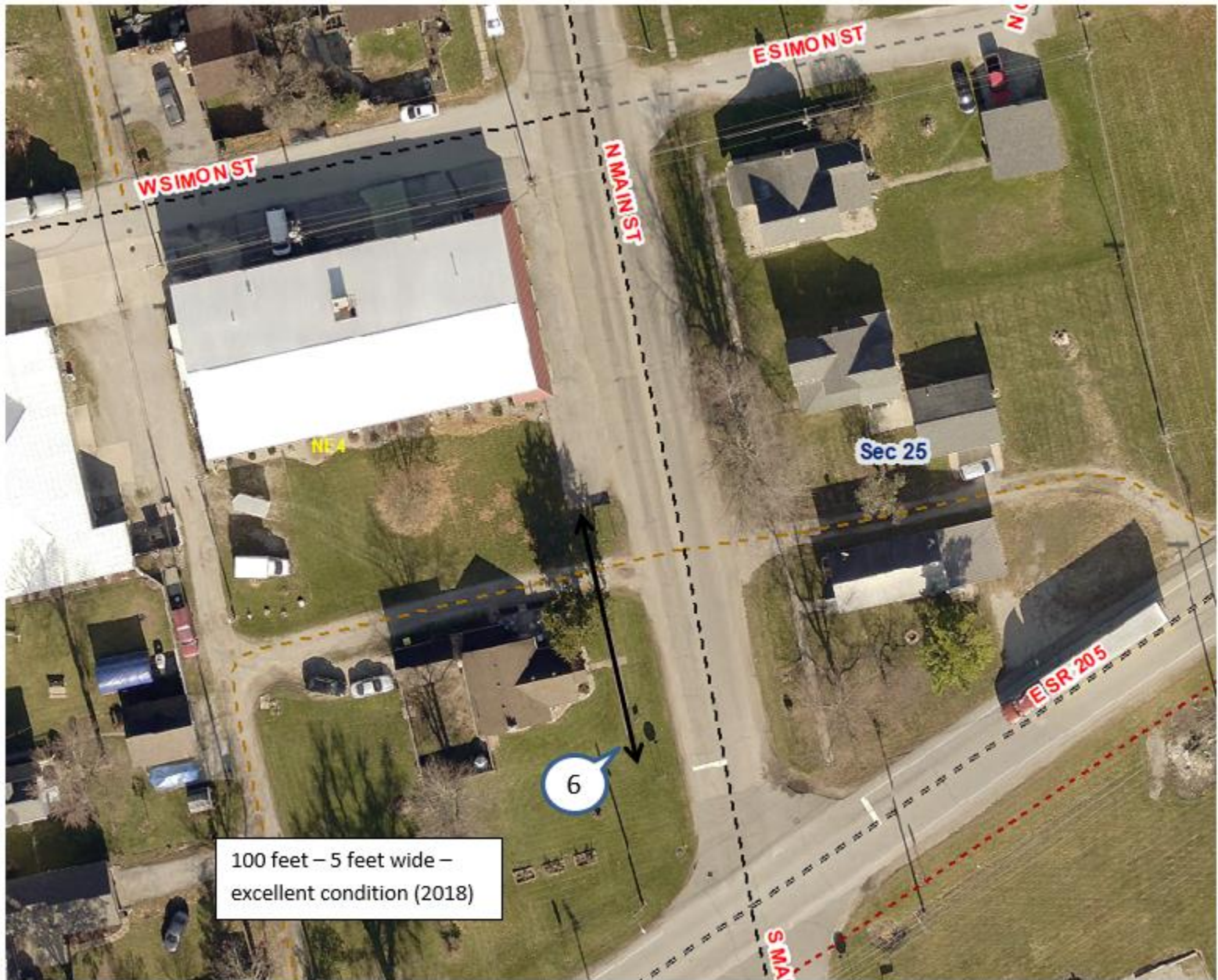
LaOtto – Site 3



LaOtto 5 & 6



LaOtto- Site 4 & 5



100 feet - 5 feet wide -
excellent condition (2018)

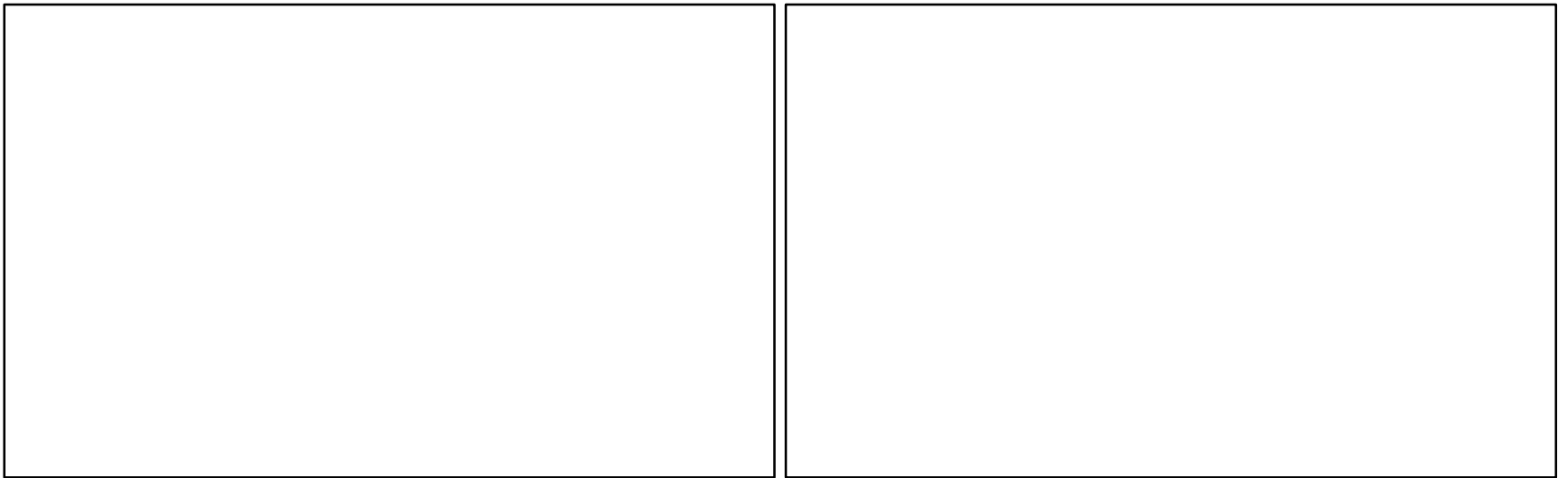
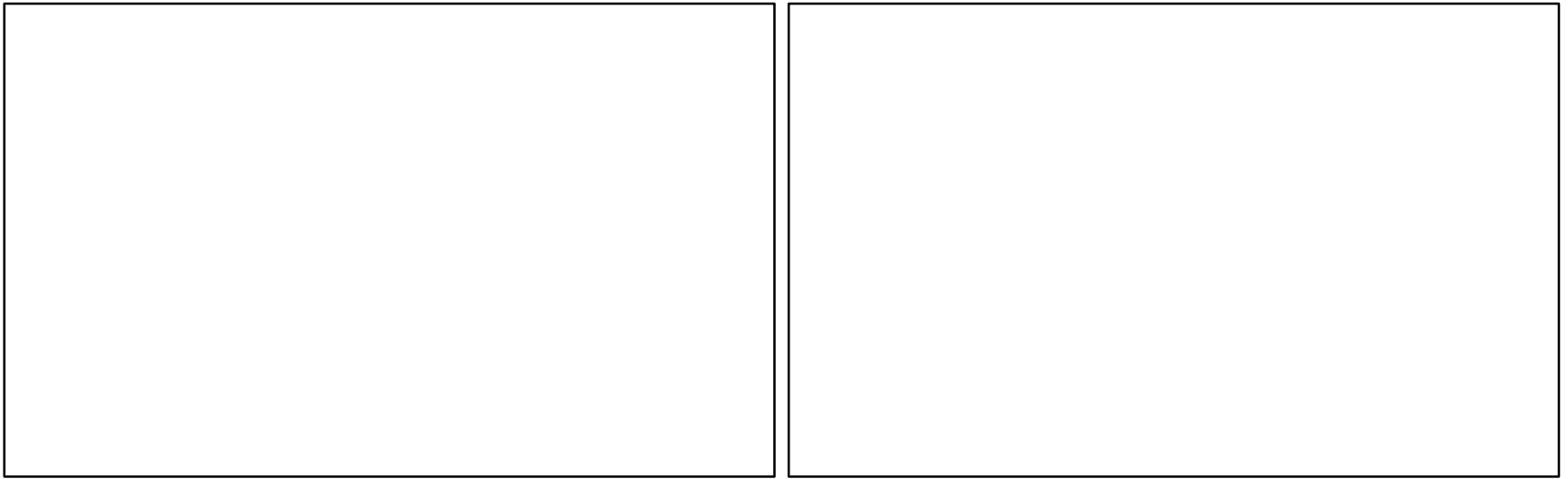


LaOtto – Site 6



LaOtto 7

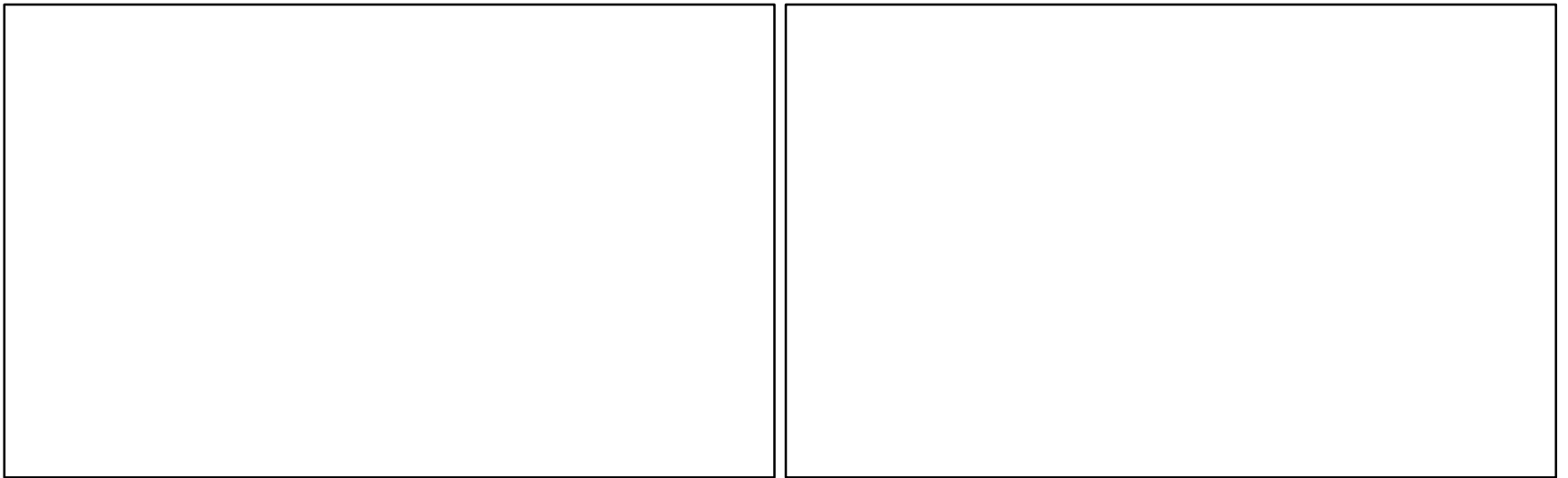
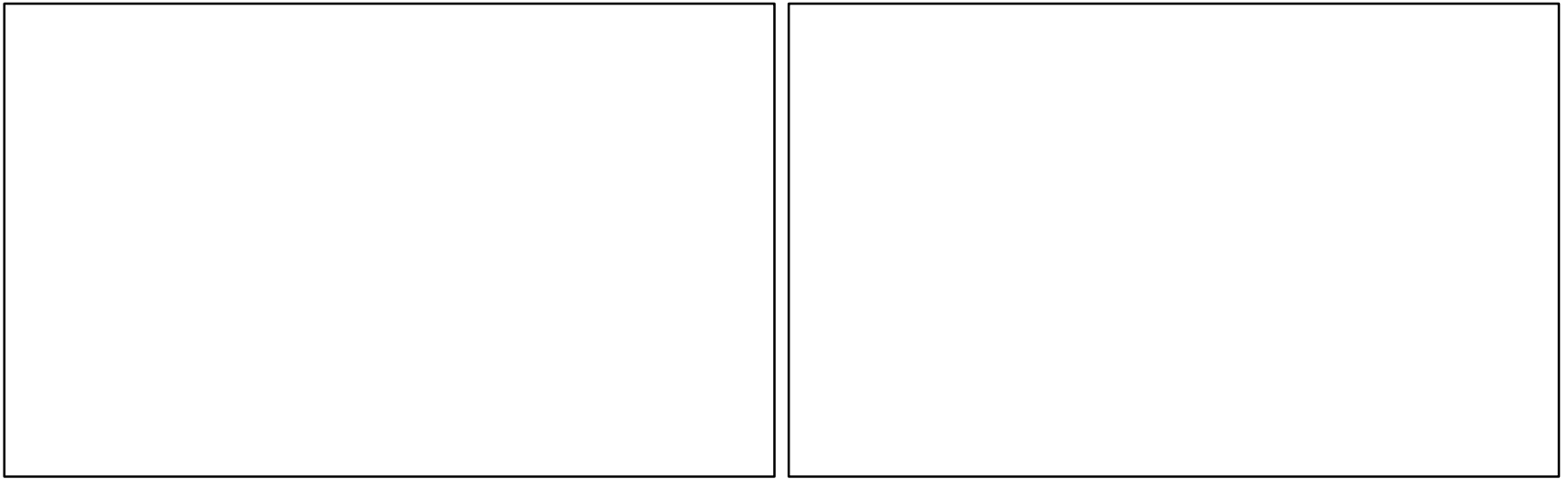




WAWAKA - SITE #4



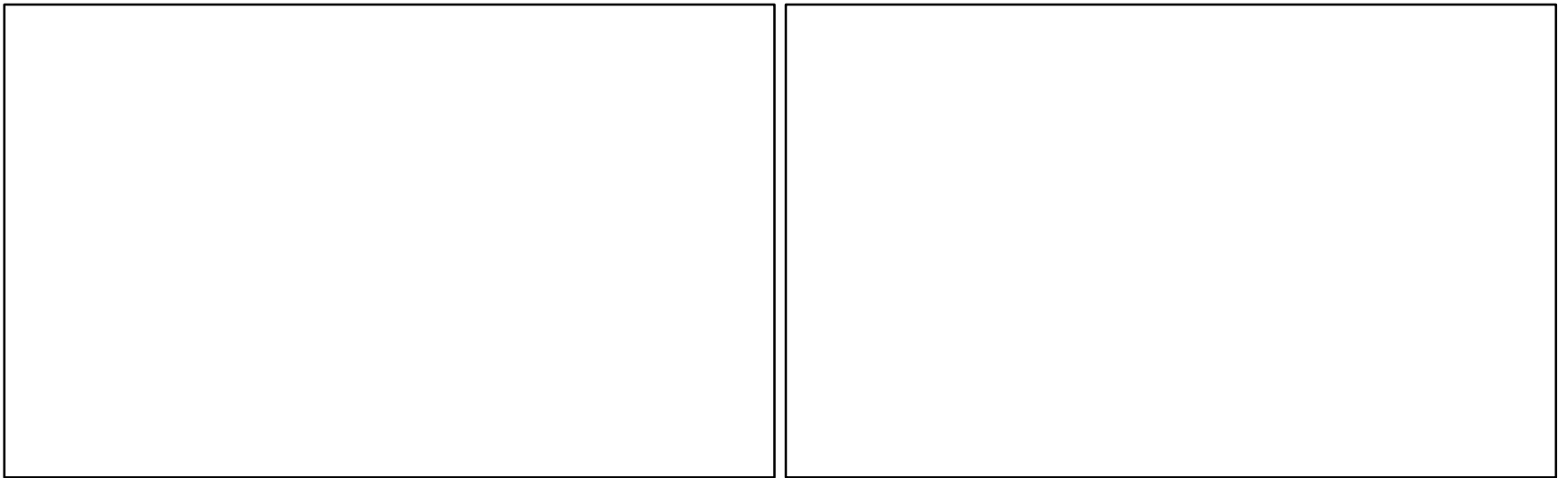
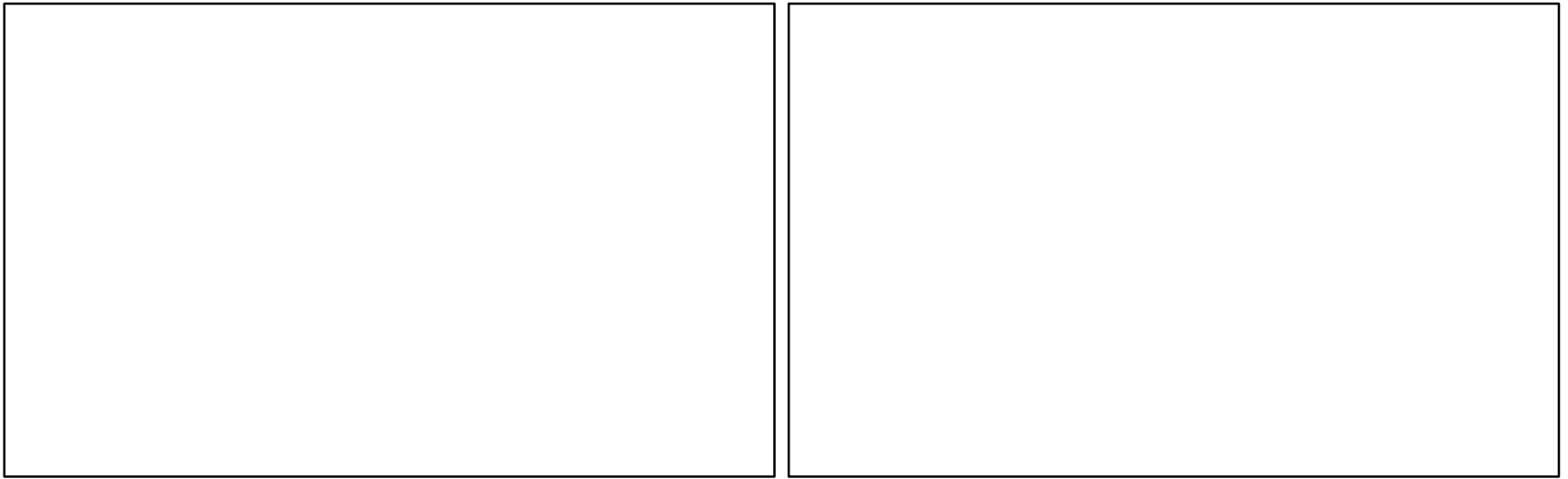
LaOtto9



WAWAKA - SITE #4



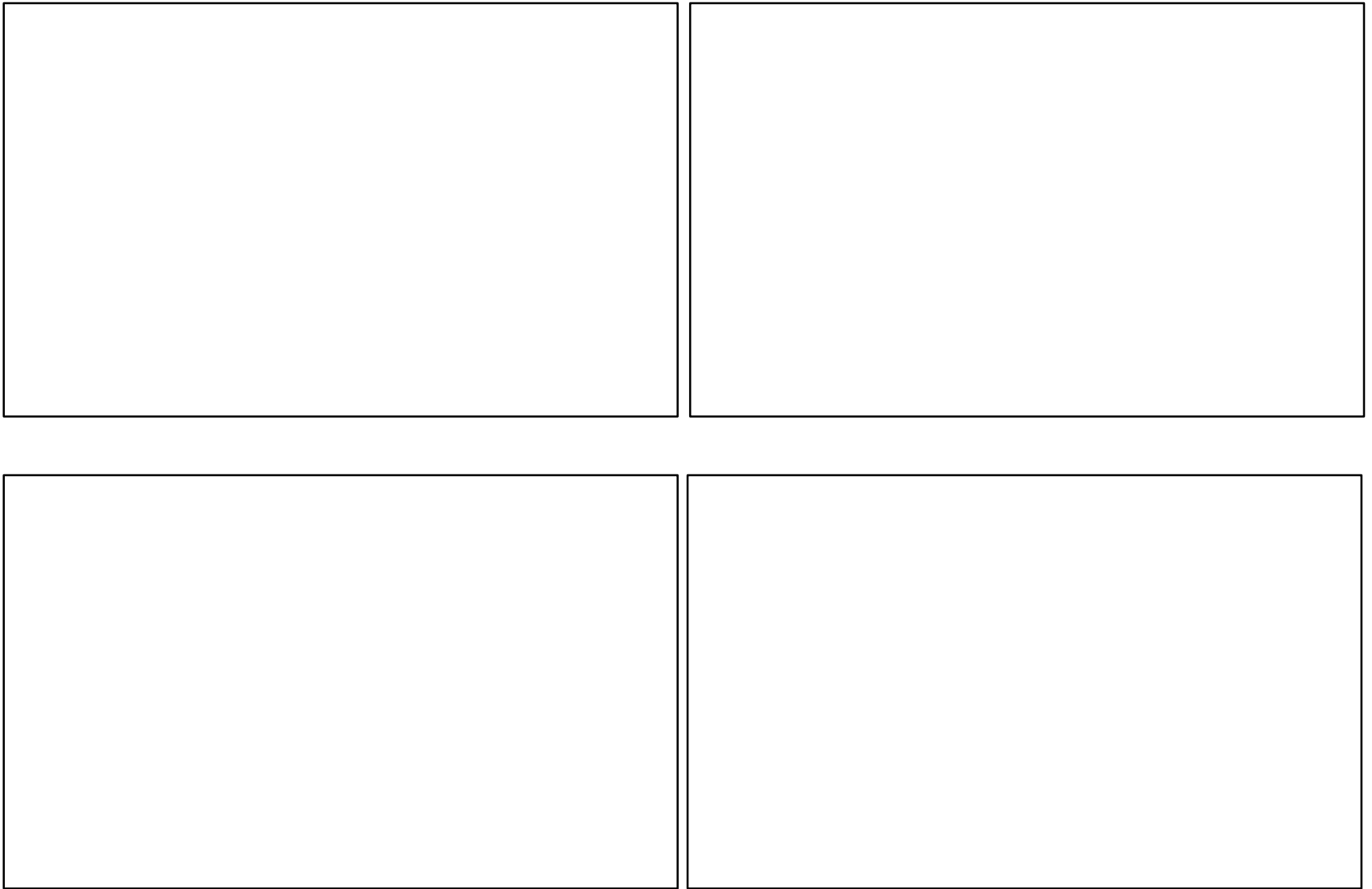
LaOtto 10



WAWAKA - SITE #4



LaOtto 11



WAWAKA - SITE #4

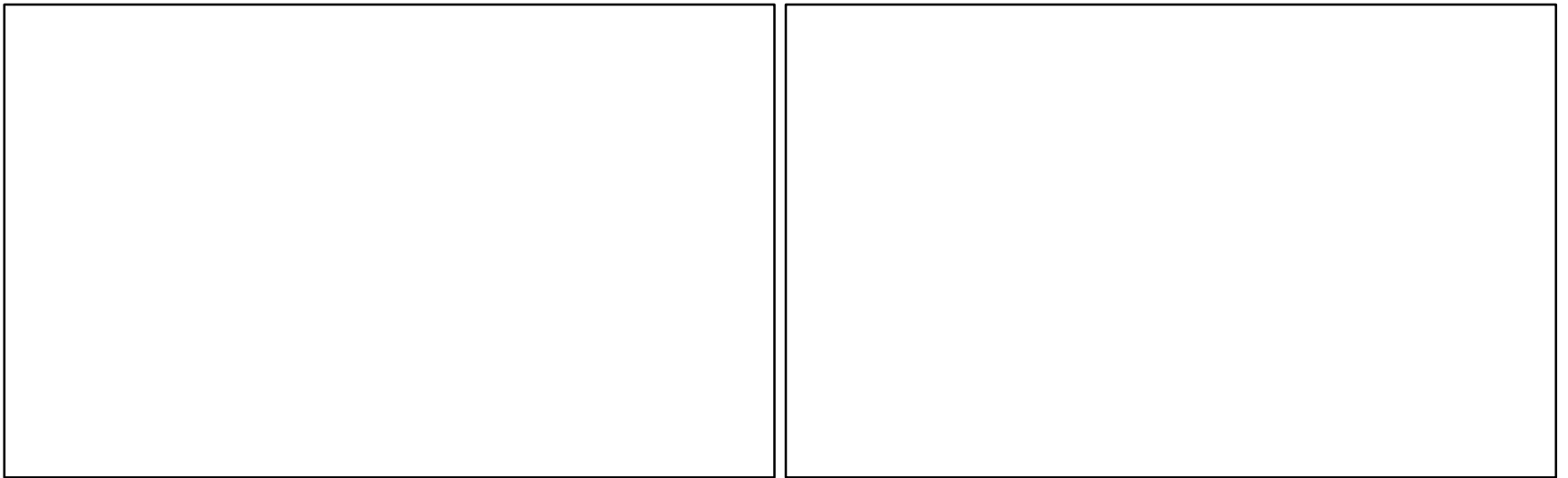
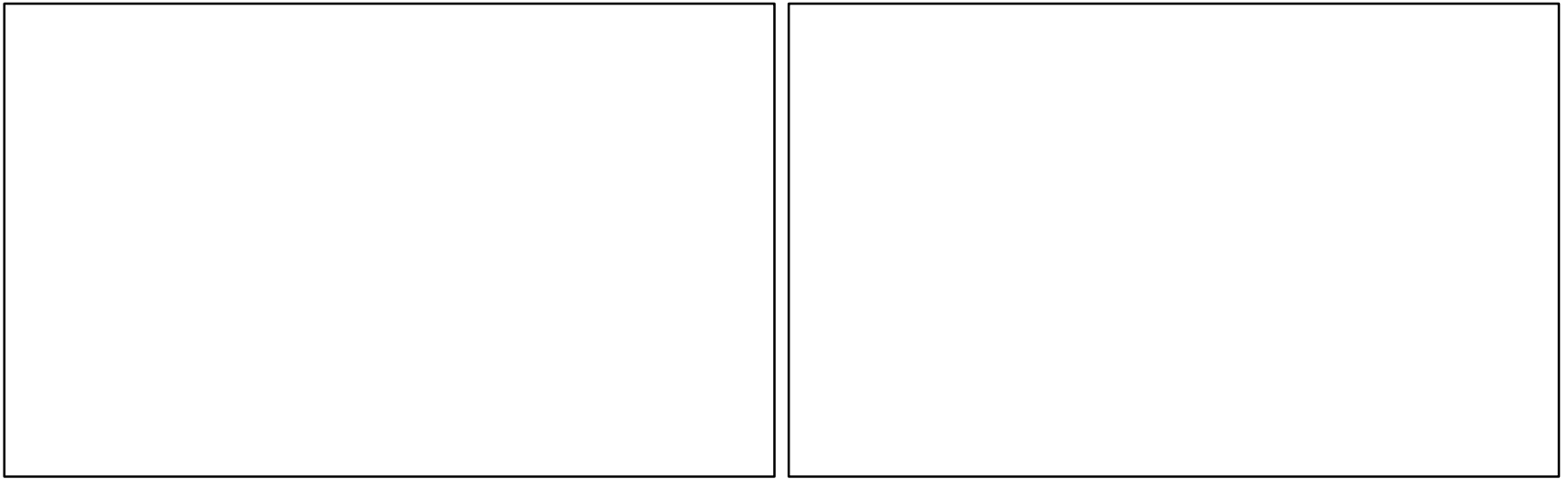


LaOtto 12



LaOtto – Site 12

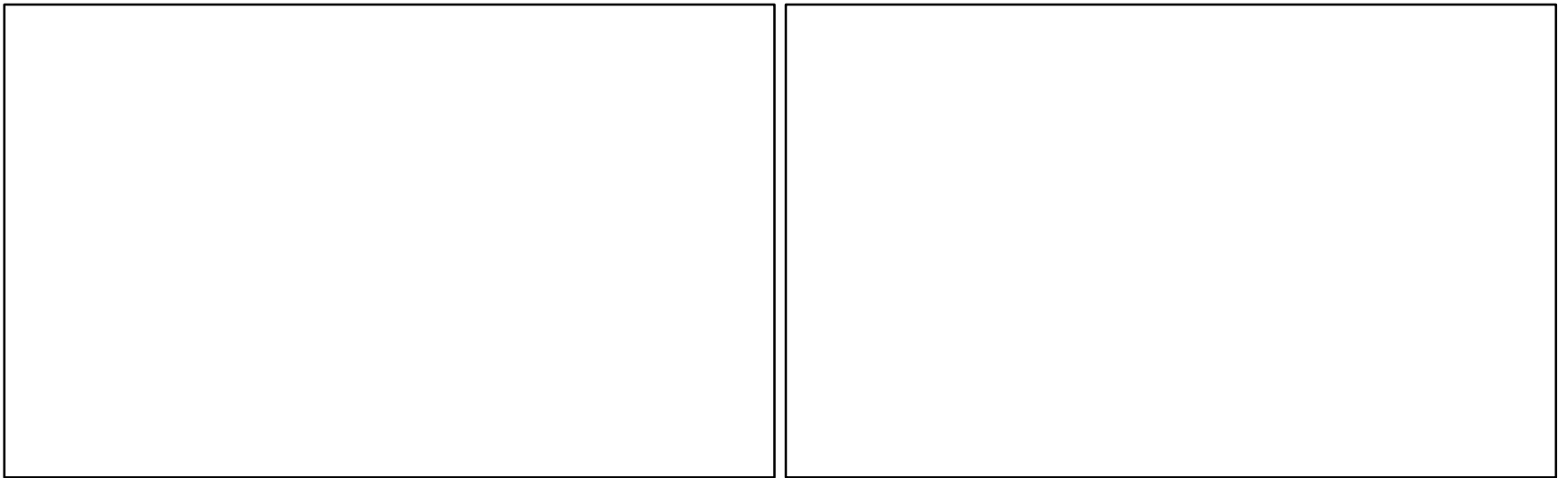
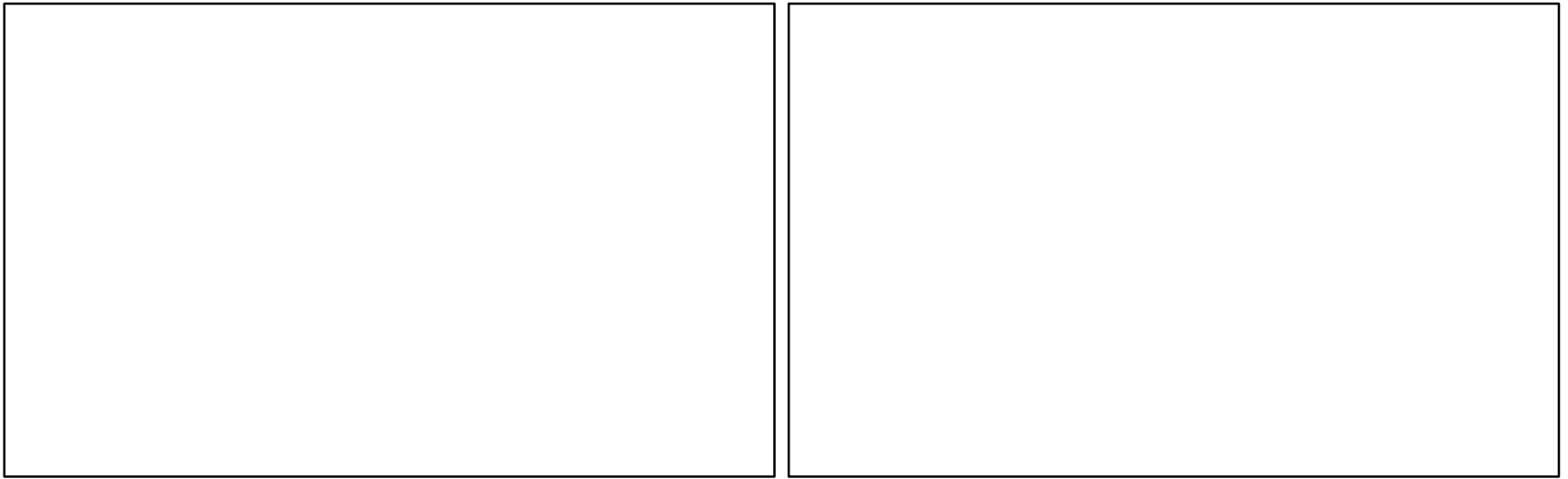




WAWAKA - SITE #4



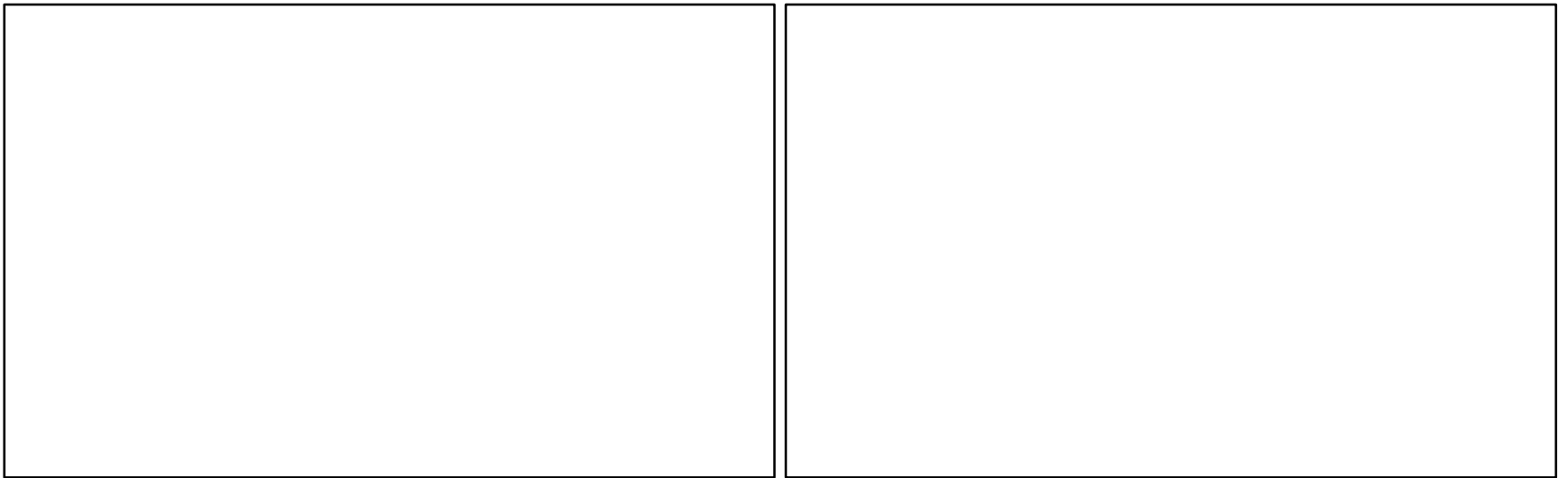
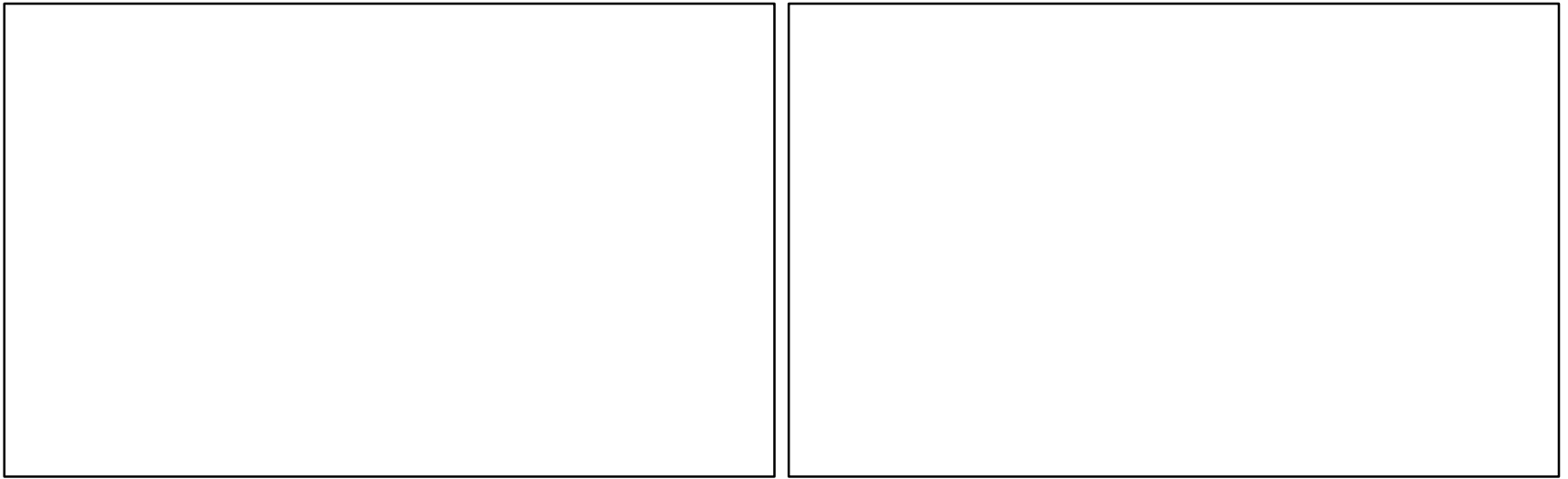
LaOtto 14



WAWAKA - SITE #4



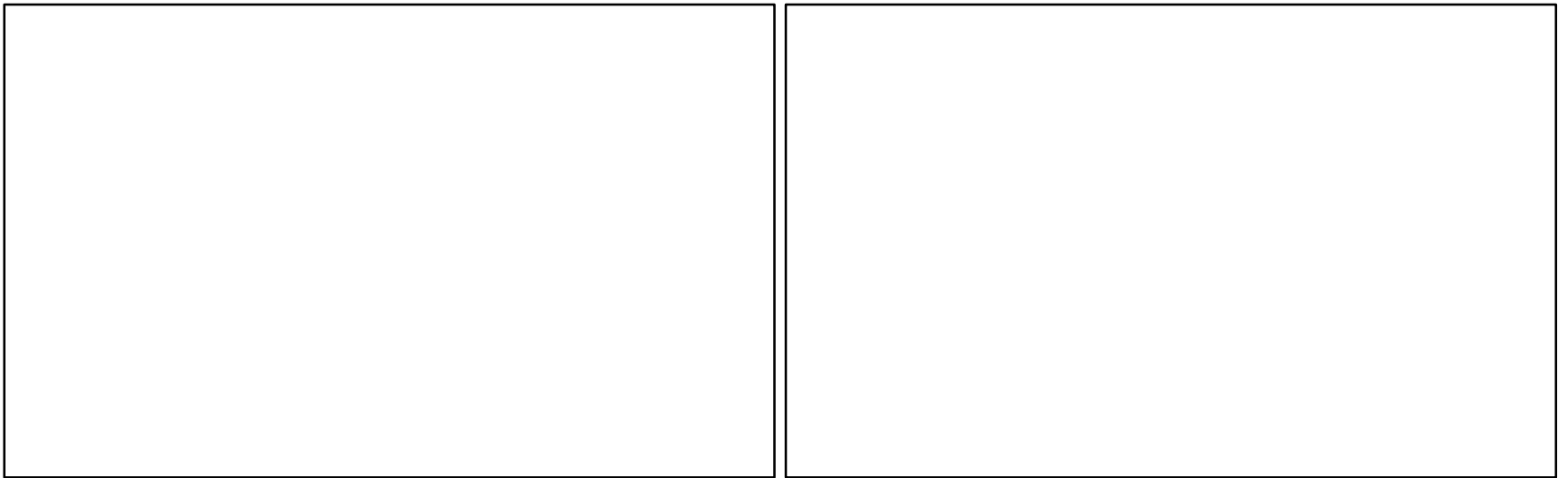
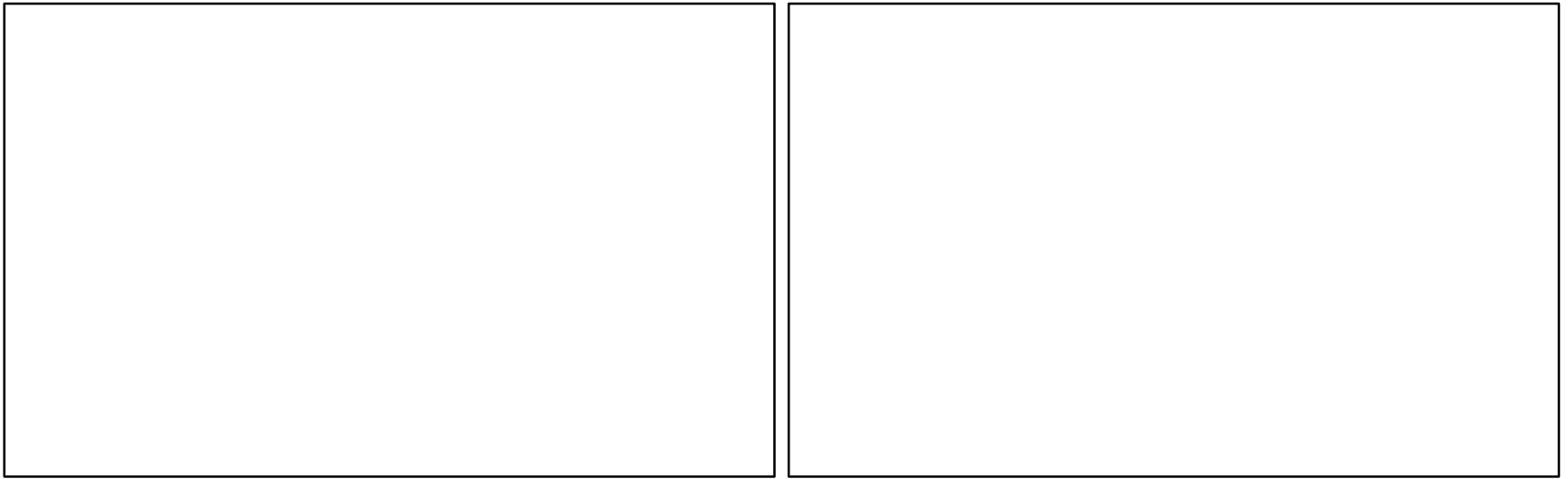
LaOtto 15



WAWAKA - SITE #4



LaOtto 16



WAWAKA - SITE #4

Noble County Community of Wolf Lake

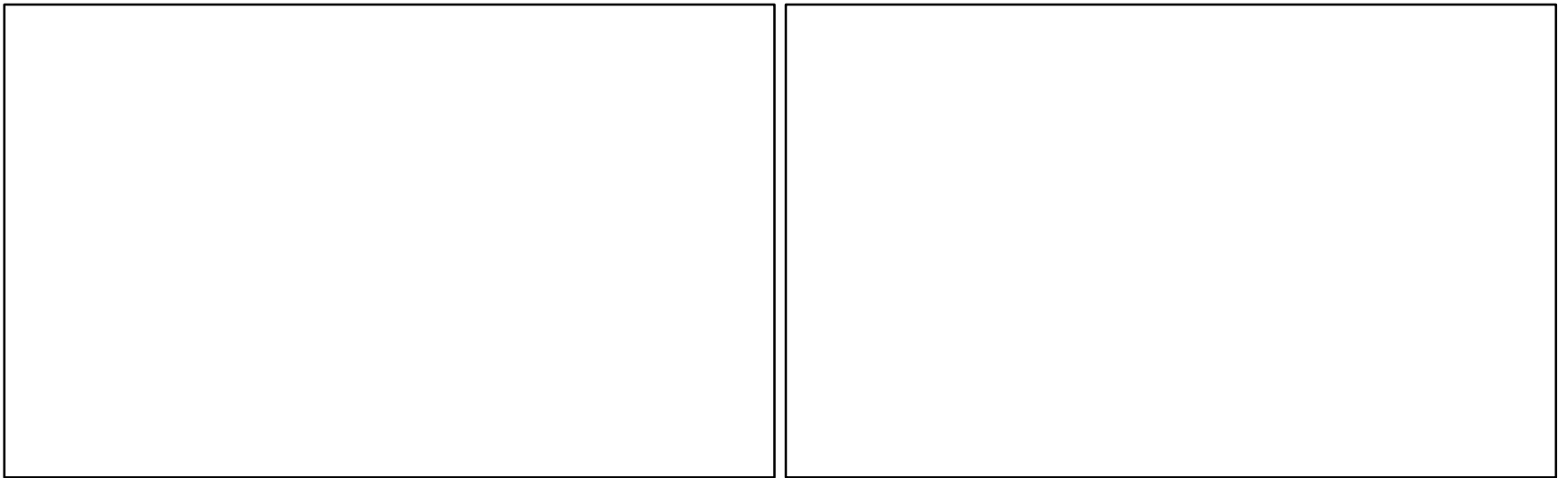
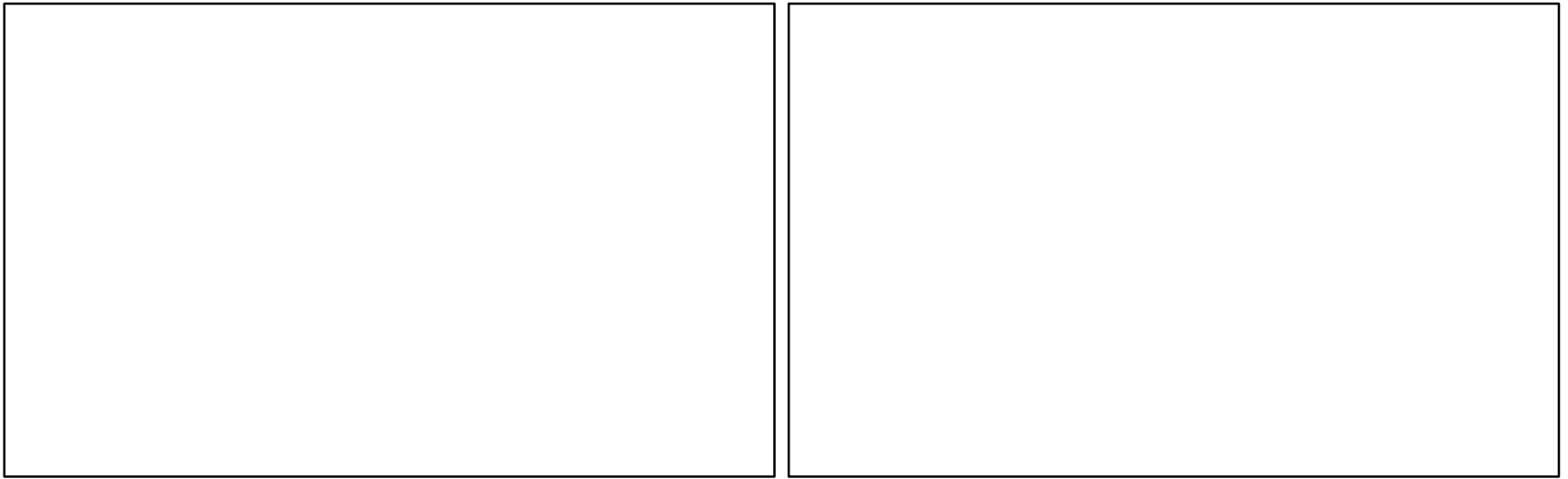
ADA Sidewalk Assessment Report



WOLFLAKE SIDEWALKS



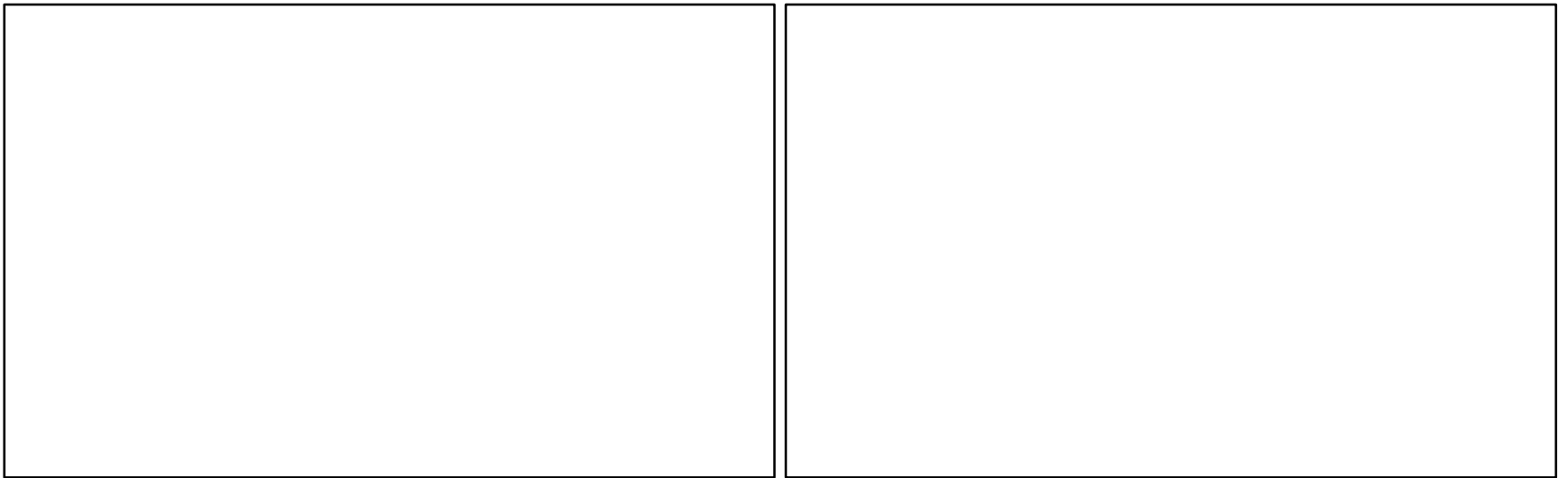
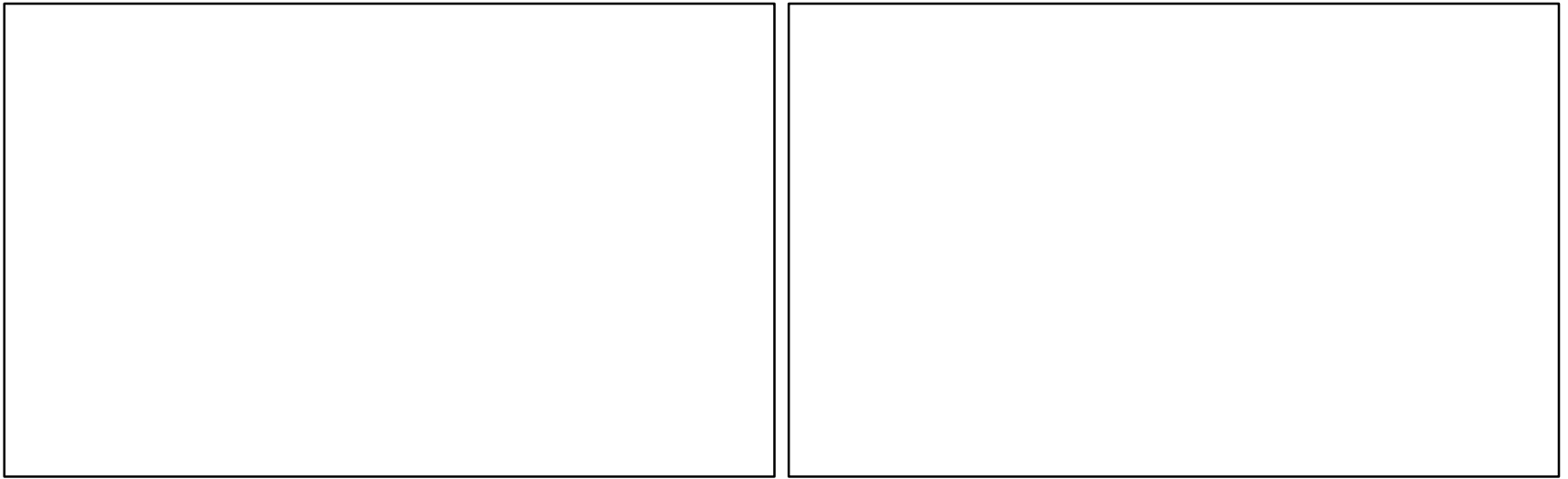
Wolflake 1



WAWAKA - SITE #1



Wolfake 2



WAWAKA - SITE #2



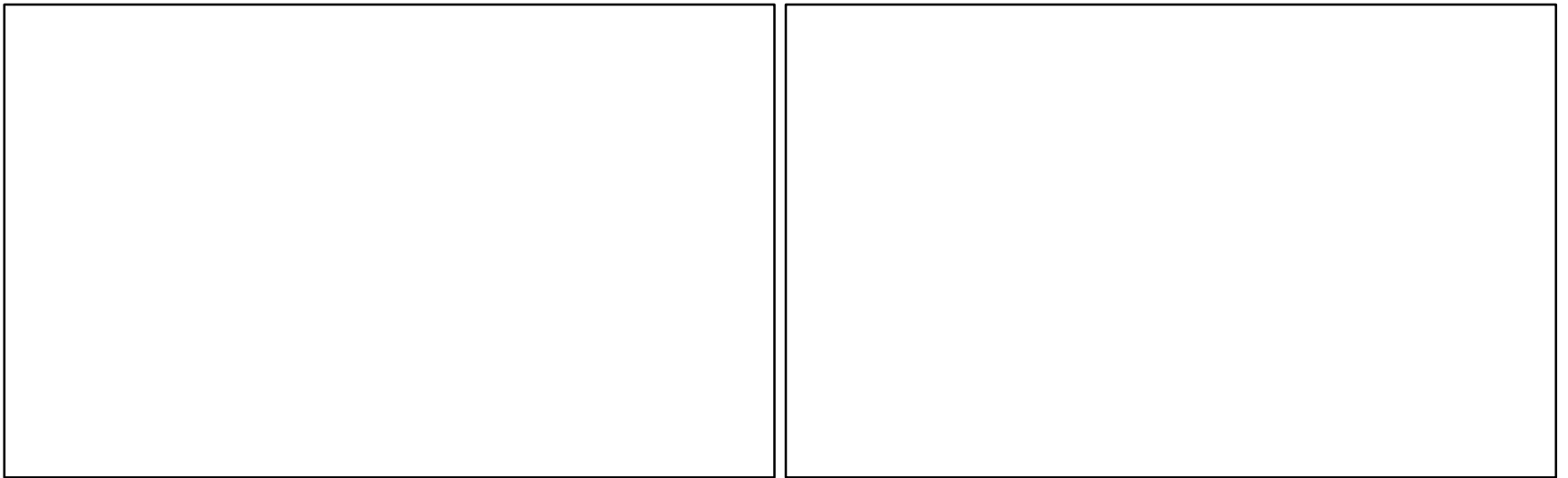
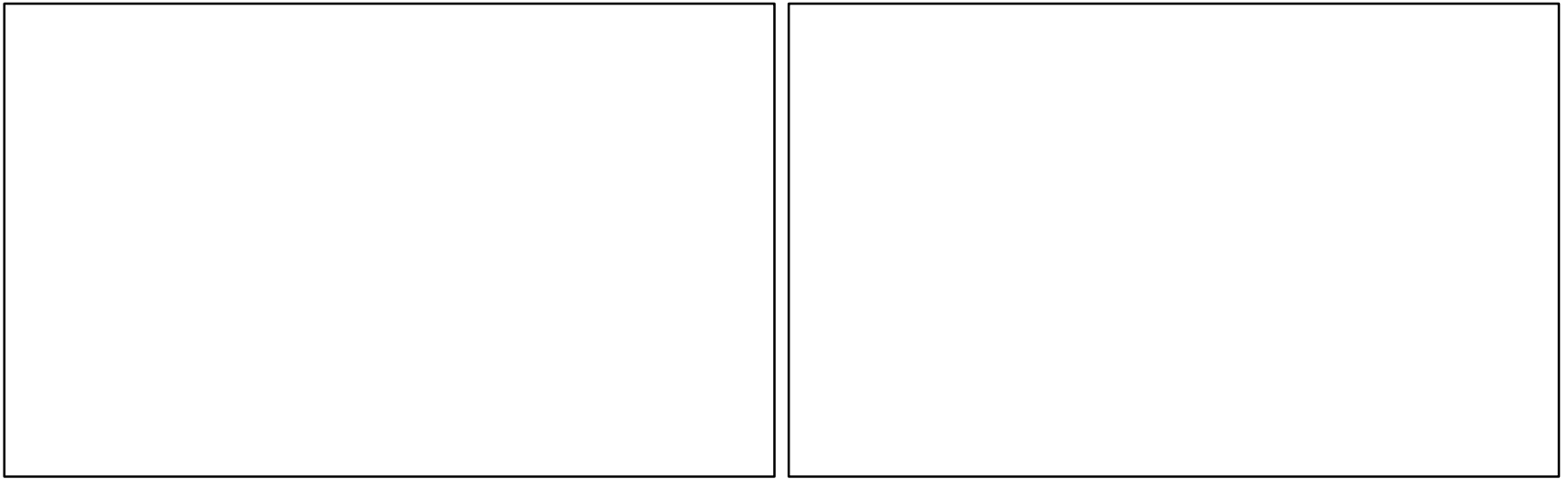
Wolflake 3



WAWAKA - SITE #3



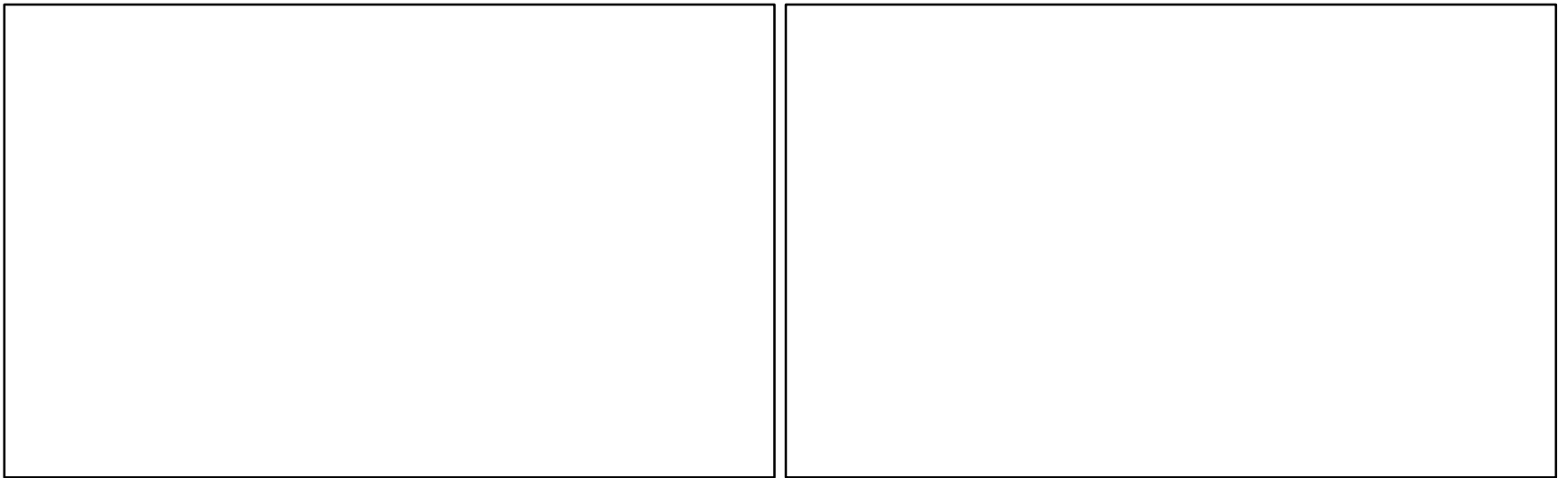
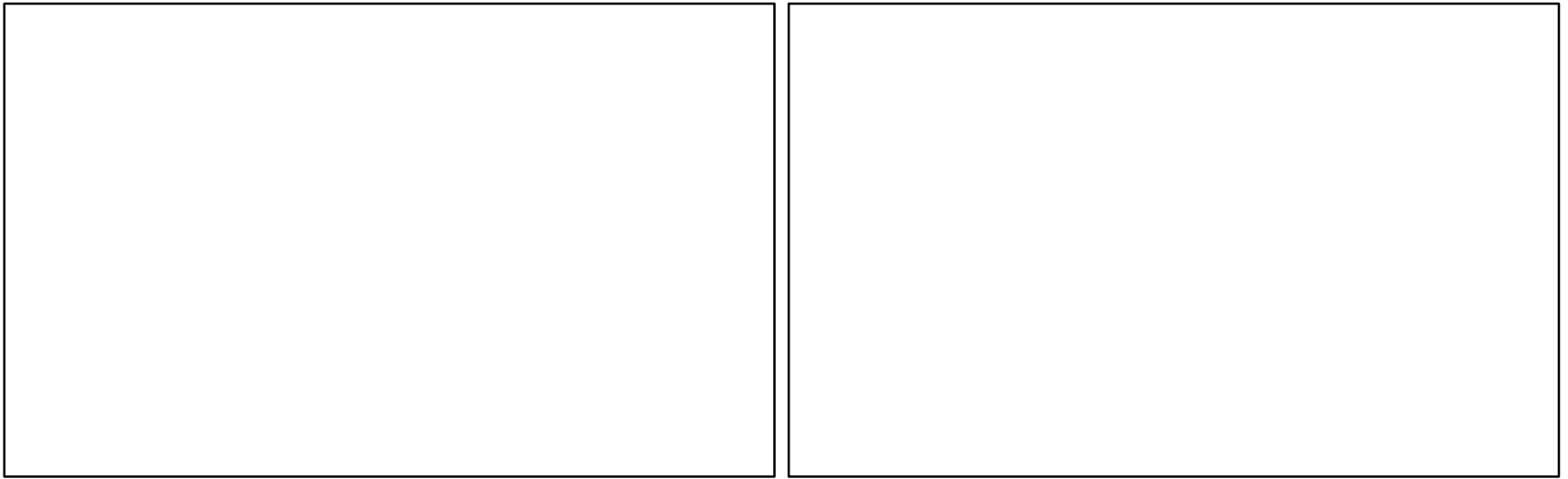
Wolflake 4



WAWAKA - SITE #4



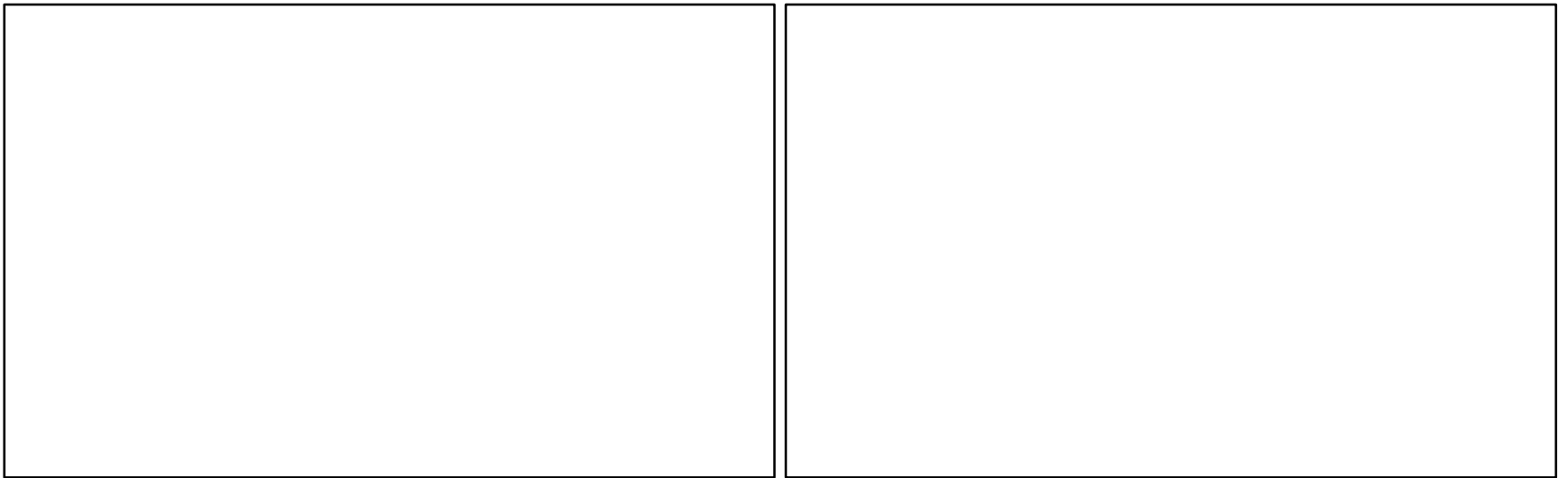
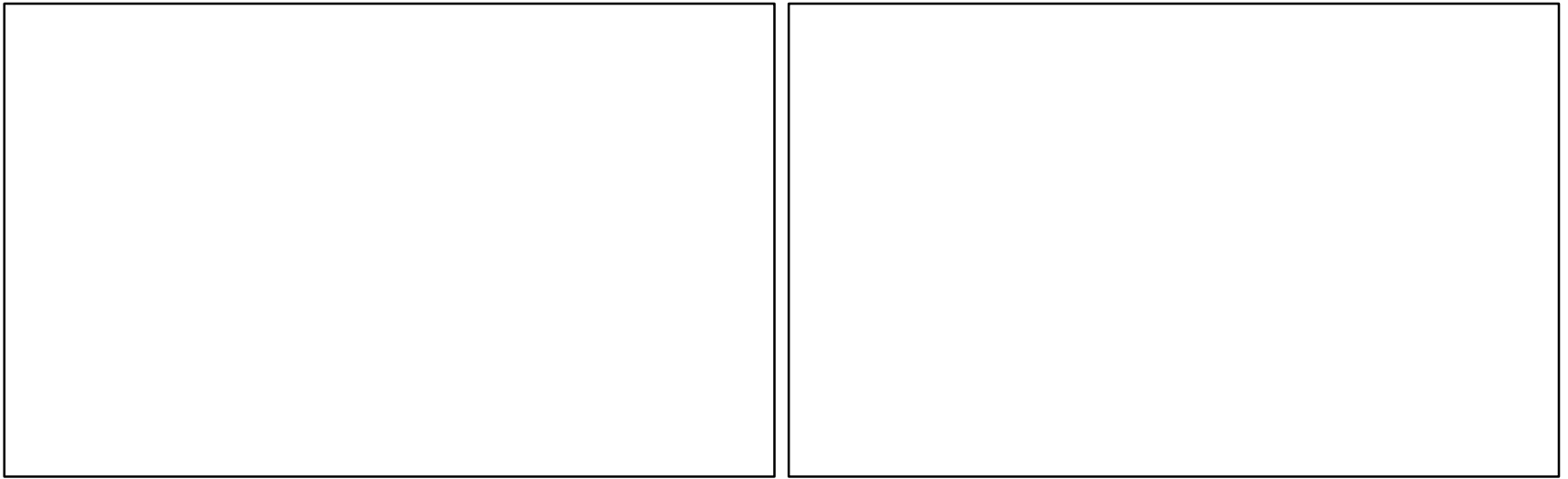
Wolflake 5



WAWAKA - SITE #4



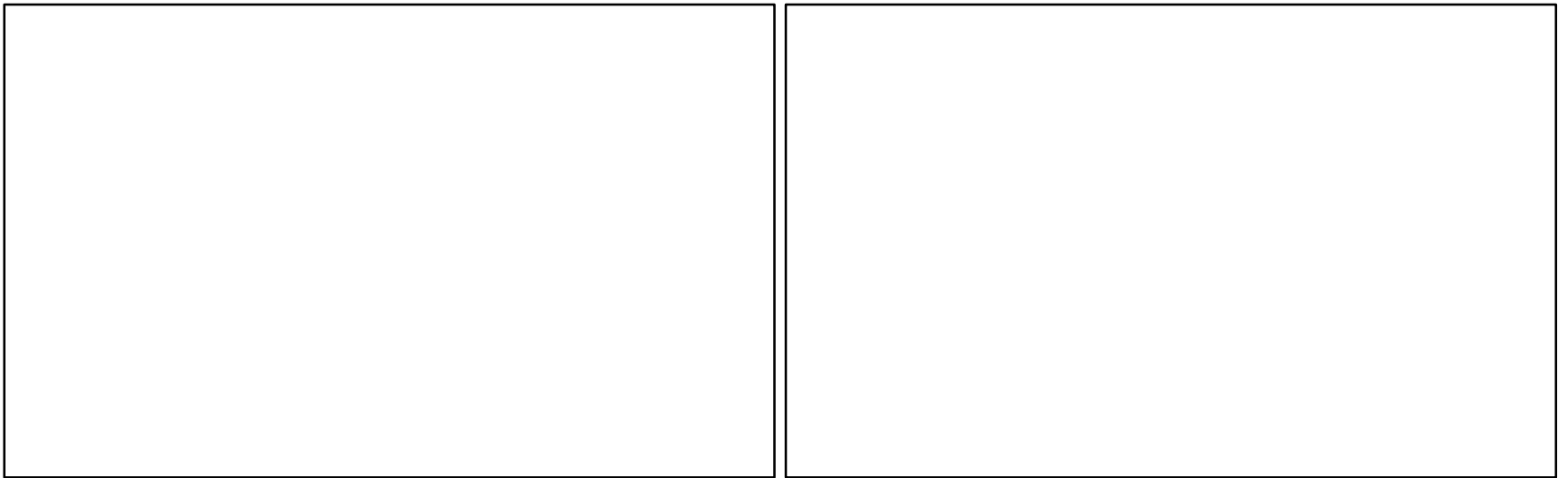
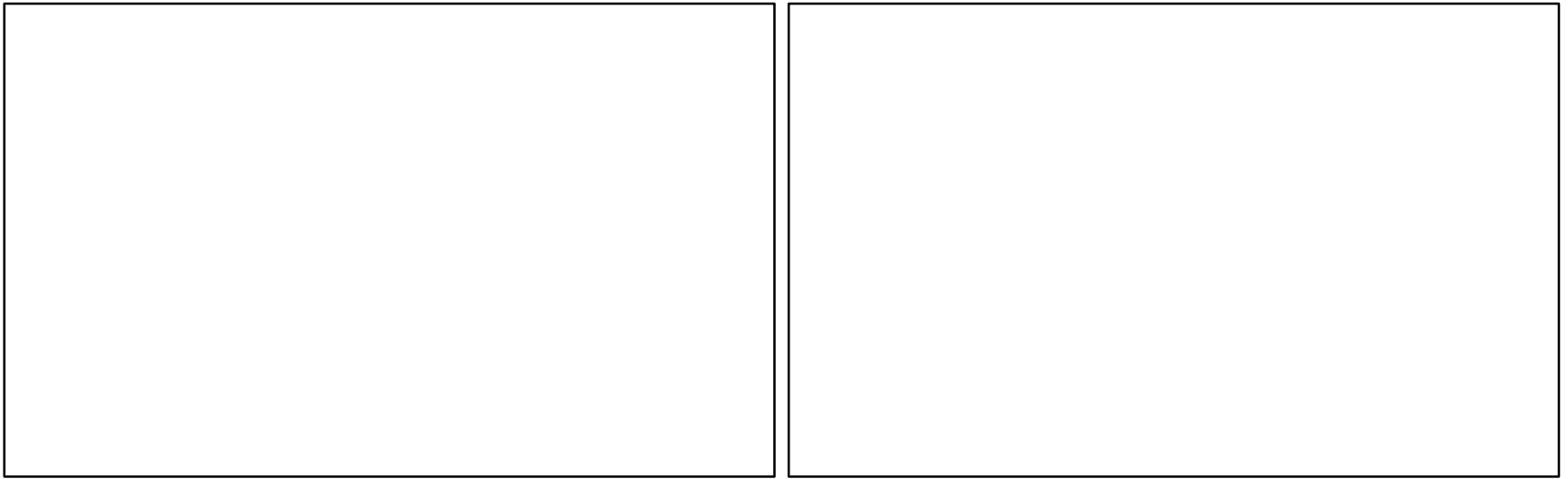
Wolf Lake 6



WAWAKA - SITE #4



Wolflake 7



WAWAKA - SITE #4

Noble County Cobblestone Subdivision

ADA Sidewalk Assessment Report



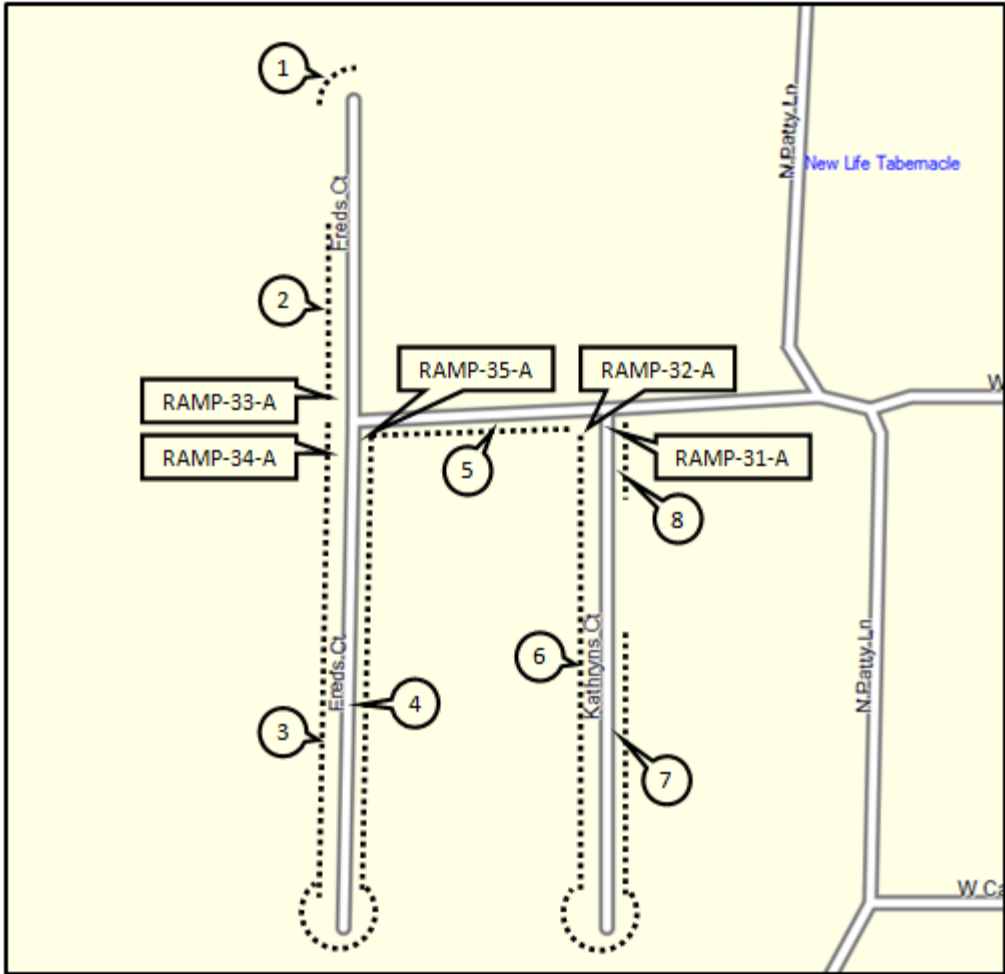
Cobblestone Subdivision



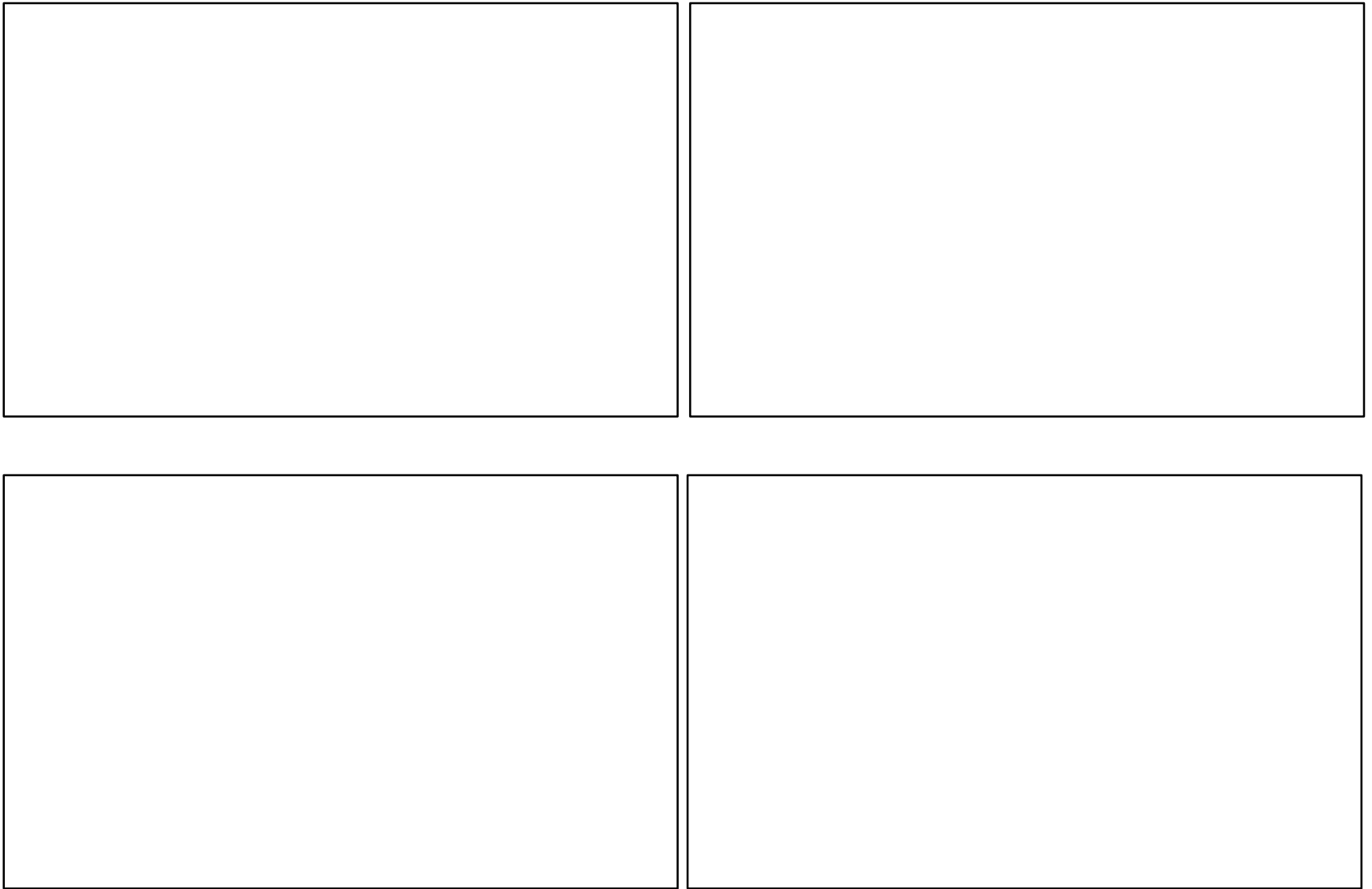
COBBLESTONE

Noble County Meadow Lane Subdivision

ADA Sidewalk Assessment Report



MEADOW LANE SIDEWALK – RAMP MAP



MEADOW LANE - SITE #1

Noble County CR 1000 East

ADA Sidewalk Assessment Report



CR 1000 EAST SIDEWALK - MAP



CR 1000 East - SITE #1 - 3

Noble County Sidewalk and Ramp Cost Estimate

Row#	Location	Area	Length	Width	Condition	Area (SqYd)	Cost	Est Repair \$
1	LaOtto	1	167	3	D	55.67	\$ 2,783.33	\$ 2,505.00
2	LaOtto	2	167	3	D	55.67	\$ 2,783.33	\$ 2,505.00
3	LaOtto	3	283	3	D	94.33	\$ 4,716.67	\$ 4,245.00
4	LaOtto	4	167	3	D	55.67	\$ 2,783.33	\$ 2,505.00
5	LaOtto	5	167	3	D	55.67	\$ 2,783.33	\$ 2,505.00
6	LaOtto	6	52	3	A	17.33	\$ 866.67	\$ -
7	LaOtto	7	84	2	A	18.67	\$ 933.33	\$ -
8	LaOtto	8	418	4	C	185.78	\$ 9,288.89	\$ 5,573.33
9	LaOtto	9	320	4	D	142.22	\$ 7,111.11	\$ 6,400.00
10	LaOtto	10	334	3	D	111.33	\$ 5,566.67	\$ 5,010.00
11	LaOtto	11	266	3	D	88.67	\$ 4,433.33	\$ 3,990.00
12	LaOtto	12	290	4	C	128.89	\$ 6,444.44	\$ 3,866.67
13	LaOtto	13	336	3	C	112.00	\$ 5,600.00	\$ 3,360.00
14	LaOtto	14	133	3	D	44.33	\$ 2,216.67	\$ 1,995.00
15	LaOtto	15	333	3	C	111.00	\$ 5,550.00	\$ 3,330.00
16	LaOtto	16	260	3	C	86.67	\$ 4,333.33	\$ 2,600.00
17	Wawaka	1	119	6	A	79.33	\$ 3,966.67	\$ -
18	Wawaka	2	99	6	A	66.00	\$ 3,300.00	\$ -
19	Wawaka	3	210	5	D	116.67	\$ 5,833.33	\$ 5,250.00
20	Wawaka	4	118	4	D	52.44	\$ 2,622.22	\$ 2,360.00
21	Wawaka	5	153	5	D	85.00	\$ 4,250.00	\$ 3,825.00
22	Wawaka	6	330	5	D	183.33	\$ 9,166.67	\$ 8,250.00
23	Wawaka	7	50	5	D	27.78	\$ 1,388.89	\$ 1,250.00

Noble County Sidewalk and Ramp Cost Estimate

Row#	Location	Area	Length	Width	Condition	Area (SqYd)	Cost	Est Repair \$
24	Wawaka	8	65	2	A	14.44	\$ 722.22	\$ -
25	Kimmell	1	251	4	C	111.56	\$ 5,577.78	\$ 3,346.67
26	Kimmell	2	155	5	C	86.11	\$ 4,305.56	\$ 2,583.33
27	Kimmell	3	100	5	A	55.56	\$ 2,777.78	\$ -
28	Kimmell	4	36	6	D	24.00	\$ 1,200.00	\$ 1,080.00
29	Kimmell	5	79	6	D	52.67	\$ 2,633.33	\$ 2,370.00
30	Kimmell	6	63	4	A	28.00	\$ 1,400.00	\$ -
31	Kimmell	7	118	4	C	52.44	\$ 2,622.22	\$ 1,573.33
32	Kimmell	8	77	3	D	25.67	\$ 1,283.33	\$ 1,155.00
33	Kimmell	9	320	3	D	106.67	\$ 5,333.33	\$ 4,800.00
34	Kimmell	10	320	3	D	106.67	\$ 5,333.33	\$ 4,800.00
35	Kimmell	11	400	3	D	133.33	\$ 6,666.67	\$ 6,000.00
36	Kimmell	12	165	3	D	55.00	\$ 2,750.00	\$ 2,475.00
37	Kimmell	13	430	3	D	143.33	\$ 7,166.67	\$ 6,450.00
38	Kimmell	14	434	3	D	144.67	\$ 7,233.33	\$ 6,510.00
39	Kimmell	15	235	6	D	156.67	\$ 7,833.33	\$ 7,050.00
40	Wolflake	1	70	4	A	31.11	\$ 1,555.56	\$ -
41	Wolflake	2	290	4	A	128.89	\$ 6,444.44	\$ -
42	Wolflake	3	278	4	D	123.56	\$ 6,177.78	\$ 5,560.00
43	Wolflake	4	70	2	A	15.56	\$ 777.78	\$ -
44	Wolflake	5	70	3	C	23.33	\$ 1,166.67	\$ 700.00
45	Wolflake	6	71	3	A	23.67	\$ 1,183.33	\$ -
46	Wolflake	7	232	3	C	77.33	\$ 3,866.67	\$ 2,320.00

Noble County Sidewalk and Ramp Cost Estimate

Row#	Location	Area	Length	Width	Condition	Area (SqYd)	Cost	Est Repair \$
47	Cobblestone	1	200	5	A	111.11	\$ 5,555.56	\$ -
48	Cobblestone	2	140	5	A	77.78	\$ 3,888.89	\$ -
49	Cobblestone	3	300	5	A	166.67	\$ 8,333.33	\$ -
50	Cobblestone	4	350	5	A	194.44	\$ 9,722.22	\$ -
51	Cobblestone	5	295	5	A	163.89	\$ 8,194.44	\$ -
52	Cobblestone	6	300	5	A	166.67	\$ 8,333.33	\$ -
53	Cobblestone	7	60	5	A	33.33	\$ 1,666.67	\$ -
54	Cobblestone	8	210	5	A	116.67	\$ 5,833.33	\$ -
55	Cobblestone	9	345	5	A	191.67	\$ 9,583.33	\$ -
56	Cobblestone	10	140	5	A	77.78	\$ 3,888.89	\$ -
57	Cobblestone	11	200	5	A	111.11	\$ 5,555.56	\$ -
58	Cobblestone	12	100	5	A	55.56	\$ 2,777.78	\$ -
59	Cobblestone	13	190	5	A	105.56	\$ 5,277.78	\$ -
60	Cobblestone	14	290	5	A	161.11	\$ 8,055.56	\$ -
61	Cobblestone	15	610	5	A	338.89	\$ 16,944.44	\$ -
62	Cobblestone	16	390	5	A	216.67	\$ 10,833.33	\$ -
63	Cobblestone	17	500	5	A	277.78	\$ 13,888.89	\$ -
64	Cobblestone	18	350	5	A	194.44	\$ 9,722.22	\$ -
65	Cobblestone	19	380	5	A	211.11	\$ 10,555.56	\$ -
66	Cobblestone	Ramp 44	8	5	B	4.44	\$ 222.22	\$ 44.44
67	Cobblestone	Ramp 45	8	5	B	4.44	\$ 222.22	\$ 44.44
68	Cobblestone	Ramp 46	8	5	B	4.44	\$ 222.22	\$ 44.44
69	Cobblestone	Ramp 47	8	5	B	4.44	\$ 222.22	\$ 44.44

Noble County Sidewalk and Ramp Cost Estimate

Row#	Location	Area	Length	Width	Condition	Area (SqYd)	Cost	Est Repair \$
70	Cobblestone	Ramp 48	8	5	B	4.44	\$ 222.22	\$ 44.44
71	Cobblestone	Ramp 50	8	5	B	4.44	\$ 222.22	\$ 44.44
72	Cobblestone	Ramp 51	8	5	B	4.44	\$ 222.22	\$ 44.44
73	Cobblestone	Ramp 52	8	5	B	4.44	\$ 222.22	\$ 44.44
74	Cobblestone	Ramp 53	8	5	B	4.44	\$ 222.22	\$ 44.44
75	Cobblestone	Ramp 54	8	5	B	4.44	\$ 222.22	\$ 44.44
76	Cobblestone	Ramp 55	8	5	B	4.44	\$ 222.22	\$ 44.44
77	Cobblestone	Ramp 56	8	5	B	4.44	\$ 222.22	\$ 44.44
78	Cobblestone	Ramp 57	8	5	B	4.44	\$ 222.22	\$ 44.44
79	Meadow Ln	1	80	5	A	44.44	\$ 2,222.22	\$ -
80	Meadow Ln	2	170	5	A	94.44	\$ 4,722.22	\$ -
81	Meadow Ln	3	515	5	A	286.11	\$ 14,305.56	\$ -
82	Meadow Ln	4	500	5	A	277.78	\$ 13,888.89	\$ -
83	Meadow Ln	5	240	5	A	133.33	\$ 6,666.67	\$ -
84	Meadow Ln	6	500	5	A	277.78	\$ 13,888.89	\$ -
85	Meadow Ln	7	380	5	A	211.11	\$ 10,555.56	\$ -
86	Meadow Ln	8	70	5	A	38.89	\$ 1,944.44	\$ -
87	Meadow Ln	Ramp 33	8	5	A	4.44	\$ 222.22	\$ -
88	Meadow Ln	Ramp 34	8	5	A	4.44	\$ 222.22	\$ -
89	Meadow Ln	Ramp 35	8	5	A	4.44	\$ 222.22	\$ -
90	Meadow Ln	Ramp 32	8	5	A	4.44	\$ 222.22	\$ -
91	Meadow Ln	Ramp 31	8	5	A	4.44	\$ 222.22	\$ -