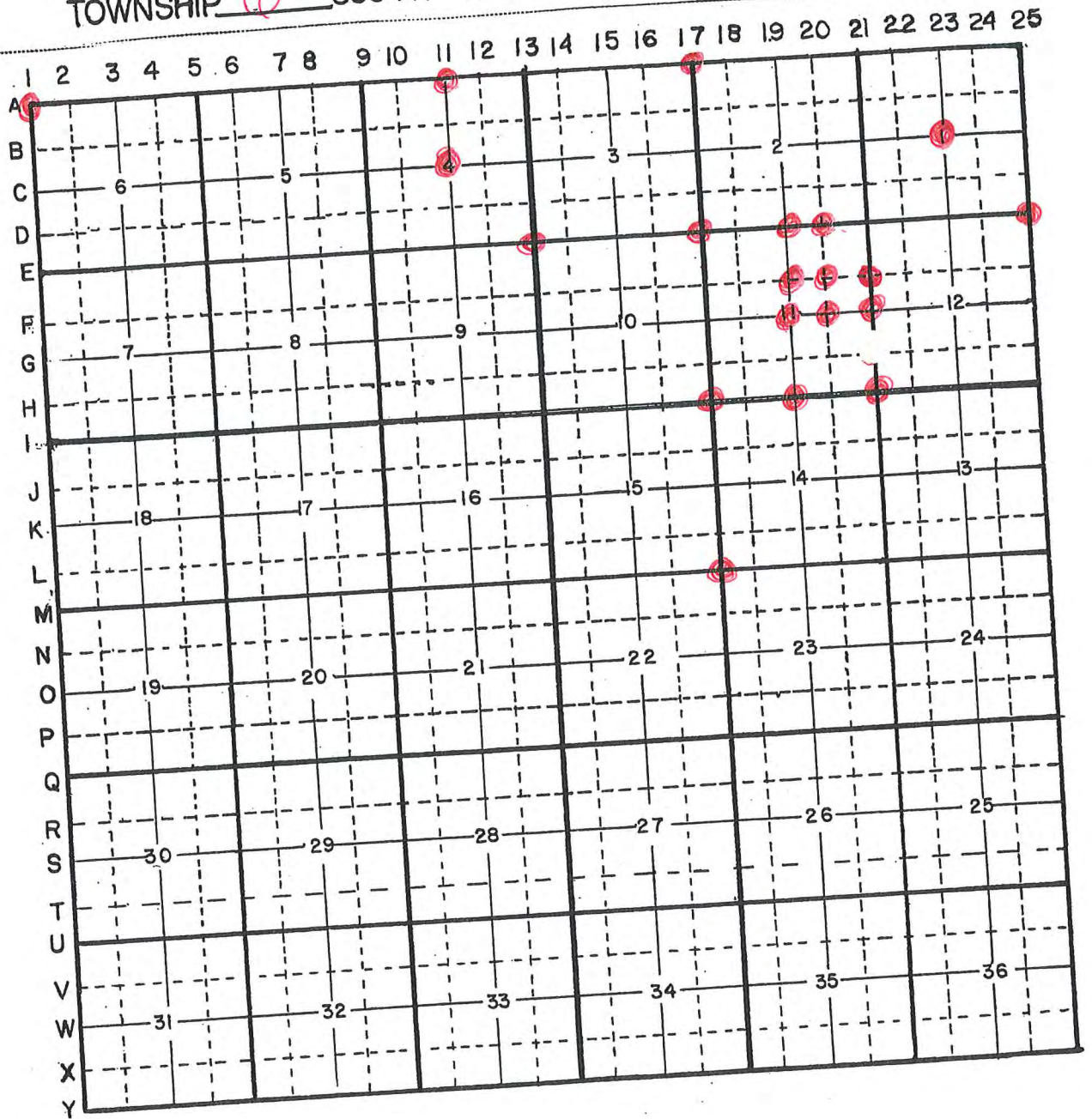


HARRISON COUNTY CORNER REFERENCE

TOWNSHIP 10 SOUTH RANGE 4 EAST



HARRISON

COUNTY

1-A

PRINCIPAL MERIDIAN

2ND

RANGE 4 EAST

TOWNSHIP 6

CORNER 1-A

LOCATION	DESCRIPTION OF		DISTANCE FROM CORNER	BEARING FROM CORNER	DATE CHECKED	CHECKED BY	FIELD BOOK	REMARKS
	MONUMENT	REFERENCE						
N.W. Corner Section 6	Stone	6" Hickory	15.45	S44-40E	3-6-87	T.B.	#3 Pg. 45	Sign Placed
		72" Oak	19.98	S39-10-0W	3-6-87	T.B.		Sign Placed
		19" Ash	3.61	S33-40-0W	3-6-87	T.B.		Sign Placed

1-A

↑ W

All Trees have a witness sign to blaze with a aluminum nail in middle.

Stone is .60 x .20 ft flush with ground. Stone is marked with a metal post & sign x

1.60' Oak nail is on west side & 1.4' up.

3.61 533-40-0W

49.98 539-10-0W

.60' Oak nail is on west side & 1.55 up.

Date 3-6-87
Party Chief T. Brown
Head Chain A. Clements
Rear Chain D. Dehn

15.75 544-40E

.50' Hickory nail is on east side & 1.40' up.

N.W. Cor. Section 6
T6S, R1E

1-A

HARRISON COUNTY

TOWNSHIP 11-A

RANGE 4 EAST

2 ND PRINCIPAL MERIDIAN

11-A

CORNER 11-A

LOCATION	DESCRIPTION OF REFERENCE		DISTANCE FROM CORNER	BEARING FROM CORNER	DATE CHECKED	CHECKED BY	FIELD BOOK	REMARKS
	MONUMENT							
N.W. Corner, N.E. 1/4 Section 4	Pipe	6-25-03 REMOVED	34.10	S58-55-10W	10-11-84	T.B.	#2 PG63	Sign Placed
		14" Ash	22.90	N21-50-0W	10-11-84	T.B.		Sign Placed
		.40 Burried Cable	36.30	N14-20-30W	10-11-84	T.B.		Sign Placed
		22" Walnut	65.80					
		12" Hickory						

558-55-10W 06-25-03 T.B

T.B. - Tom Bube
6-25-03

11-A

COPY

HARRISON

PRINCIPAL MERIDIAN

2ND

EAST

RANGE 4

TOWNSHIP 6

CORNER 11-A

LOCATION	DESCRIPTION OF MONUMENT		DISTANCE FROM CORNER	BEARING FROM CORNER	DATE CHECKED	CHECKED BY	FIELD BOOK	REMARKS
	MONUMENT	REFERENCE						
N.W. Corner, N.E. 1/4 Sect. 04	Pipe	12" Hickory	65.80	S58-55-10W	6-25-03	T.O.B.	Bk 2 pg63	Sign Placed
		.40 Burried Cable	22.90	N21-50-0W	10-11-84	T.B.		Sign Placed
		22" Walnut	36.30	N14-20-30W	10-11-84	T.B.		Sign Placed

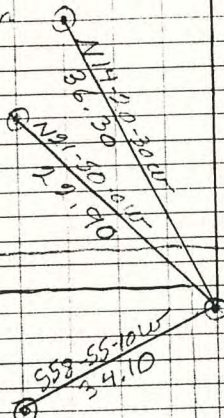
II-A

DIETZGEN NO. 385-3

NORTH

1.80 Walnut, nail on west side + 2.10 up.

HO Buried cable post, nail on East side + 1.90 up.



All Trees have a blaze with a aluminum nail in middle.

All Trees + post have a witness sign.

Date 10-11-84

1" Pipe F

Pipe is .80' underground

1.20 Ash, nail on north side + 2.15 up.

Party Chief T. Brown

Head Chain B. Clements

Lead Chain M. Messes

NW Cor, NE 1/4, Sect 4

T-65, R 4 E

11-C

HARRISON

COUNTY

PRINCIPAL MERIDIAN

2ND

EAST

4

RANGE

TOWNSHIP 6

CORNER 11-C

6

LOCATION	DESCRIPTION OF		DISTANCE FROM CORNER	BEARING FROM CORNER	DATE CHECKED	CHECKED BY	FIELD BOOK	REMARKS
	MONUMENT	REFERENCE						
NW 1/4 SE Corn. Section 4	Stone	24" Blk Wall Fence Post	13.70' 30"	N 0 -W 95 0 N-80 E	06-25-03 06-25-03	T.O.B. T.O.B.	BK2 pg68	Sign Place Sign Placed

ALL Post - Tree
HAVE WITNESS SIGN

N 0° 95' W 3/8" PP
Rebar 16'
24" Black
Walnut 20' x 4"

STONE
FOUND

N 0° 80' E Fence Post
XXXXXXX
Fence
15'

Shirley Hennings
BK 94 Pg. 73-77

Witness By
Tom Burde

06-25-03

NW 1/4 SE Corner
Sect 4, T6S, R4E

JACKSON RD

BK 2 Pg 68 11C

13-E

CORNER RECORD

HARRISON COUNTY

CORNER 13-E TOWNSHIP 6 SOUTH RANGE 4 EAST 2 ND PRINCIPAL MERIDIAN

LOCATION	DESCRIPTION OF		DISTANCE FROM CORNER	BEARING FROM CORNER	DATE CHECKED	CHECKED BY	FIELD BOOK	REMARKS
	MONUMENT	REFERENCE						
SE Corner of Section 4	Stone	14" Hickory	20.15	N38-23E	6-26-81	M.B.	#/Pg. 37	Sign Placed
		12" Maple	6.96	S71-57E	6-26-81	M.B.		Sign Placed
		12" Red Oak	23.06	N75-56W	6-26-81	M.B.		Sign Placed

13-E

13-E

SE COR OF SEC 24

TGS RHE

G-26-81

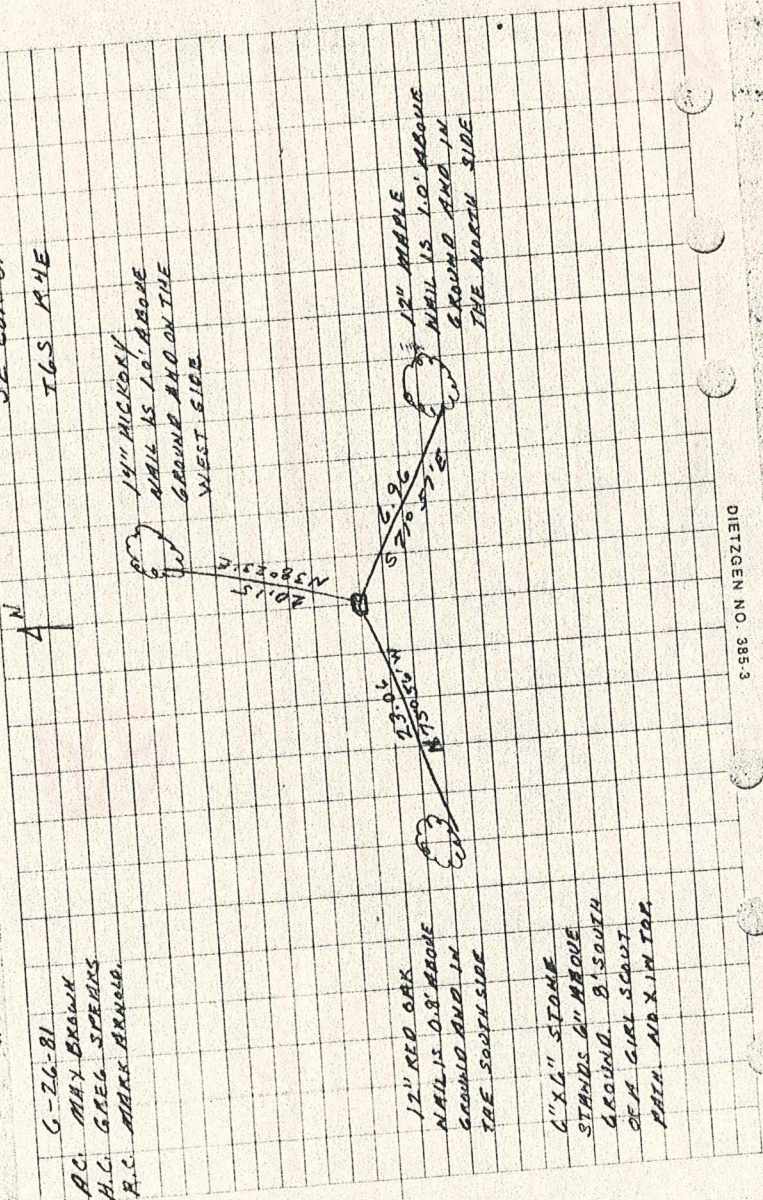
AC. MAX BROWN
H.C. GREG SPEARS
R.C. MARK ARNSP.

14" HICKORY
NAIL IS 1.0' ABOVE
GROUND AND ON THE
WEST SIDE

12" RED OAK
NAIL IS 0.8' ABOVE
GROUND AND IN
THE SOUTH SIDE

6" X 6" STONE
STANDS 6" ABOVE
GROUND. B' SOUTH
OF A GIRL SCOUT
PATH. AND X IN TOP

12" MAPLE
NAIL IS 1.0' ABOVE
GROUND AND IN
THE NORTH SIDE



DIETZEN NO. 3853


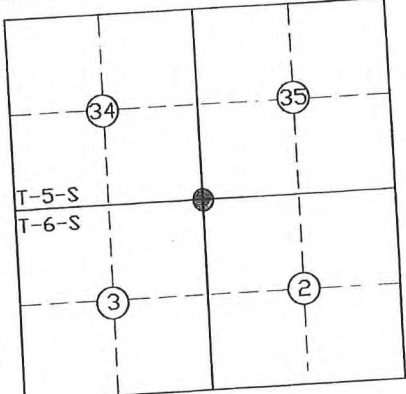
17-A

Harrison County No. Y-17 - A-17

T 5 S R 4 E 2nd Mer. , County Harrison State Indiana

Section Corner common to Sections 34 & 35, T-5-S, R-4-E and Sections 2 & 3, T-6-E, R-4-E

EXISTING SURVEYS

<p>No Original Government Survey Evidence Recovered</p>	<p>Picture/Sketch</p>
<p>See Survey recorded in Survey Book 1, oversized Document 02849 and 02863 and as Instrument Number 2011101613.</p>	
<p>Subsequent Corner Restoration</p>	<p>Evidence of Subsequent Corner Restoration Found</p>
<p>Year surveyed _____ By _____ Where filed or recorded _____ Monument _____ (Original, concrete post, iron rod, etc...)</p>	<p>Year of search <u>2014</u> By <u>VHM</u> Recovered #4 projecting 1.0' with carsonite post & "T" post with Harrison County Surveyor's sign.</p>
<p>Bearing Trees, Reference Objects</p> <p>Species _____ Diameter _____ Bearing _____ Distance _____</p>	<p>Perpetuation Record</p> <p>Monument and accessories established. Include brief description of area. <u>Replaced monument with #5 x 24" rebar with 3/4" aluminum disk stamped to depict the corner position. Set carsonite post North 0.5', metal post with sign South 1/2' and "T" post with sign Northeast 1/2'. The monument is situated in prominent North-South, East-West cultural intersection. Monument is also in a ditch.. Corner accessories established:</u></p> <p>W. Oak 18, N 62° W, 13.95' to mag nail 1/2' up in Northeast side, Red Oak 19", N 85° E' 12.28' to mag nail 1/2' up in Southeast side with Harrison County Surveyor's sign. Hickory 10", S 4° E, 19.5' to mag nail 1/2' up in Southwest side.</p>
	<p>N: 1011266.2 E: 218094.2</p>
<p>Signature <u>Vik H. M.</u> Date: <u>Dec. 08, 2014</u></p>	<p><u>Nawbak Amster 2014</u></p>

LAND CORNER RECORD
(RECTANGULAR SURVEYS)


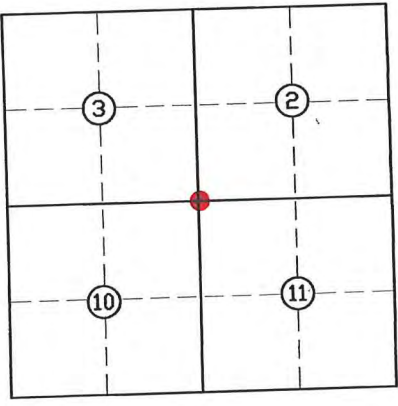
17-E

Harrison County Surveyor's Reference Index Number: E-17

T 6 S R 4 E 2nd Mer. , County Harrison State Indiana

Section Corner common to Sections 2, 3, 10 and 11

EXISTING SURVEYS

No Original Government Survey Evidence Recovered	Picture/Sketch
<p>See 1988-1989 survey recorded as Document Number 02863, dated June 29, 1989 or 1990 and Survey Plat file.</p>	
Subsequent Corner Restoration	Evidence of Subsequent Corner Restoration Found
<p>Year surveyed _____ By _____ Where filed or recorded _____ Monument _____ <small>(Original, concrete post, iron rod, etc...)</small></p> <p>Bearing Trees, Reference Objects</p> <p>Species _____ Diameter _____ Bearing _____ Distance _____</p>	<p>Year of search <u>2015</u> By <u>VHM</u> Recovered <u>railroad spike, 1.0' deep, in "T" intersection, 11' North of South edge of pavement in centerline of Fredericks Way to the North.</u></p>
	<p>Perpetuation Record</p> <p>Monument and accessories established. Include brief description of area. <u>Monument left as recovered. Set mag hub in concrete plug over monument. Corner accessories established:</u> <u>Stop Sign with Harrison County Surveyor's sign, N 25° W, 29.20'.</u> <u>Telephone Pedestal, S 13° E, 21.65'.</u> <u>Water Valve, S 54° E, 25.75'.</u></p> <p>N: 1005957.7 E: 218151.8</p>
<p>Signature <u>Vick H. M</u> Date: <u>11/02/15</u></p>	

HARRISON

COUNTY

17-I

PRINCIPAL MERIDIAN

2ND

EAST

4

RANGE

6

TOWNSHIP

17-I

CORNER

LOCATION	DESCRIPTION OF		DISTANCE FROM CORNER	BEARING FROM CORNER	DATE CHECKED	CHECKED BY	FIELD BOOK	REMARKS
	MONUMENT	REFERENCE						
Quarter Sec. Corner Sec. 14 & 15	Monument is	Situated @	Toe of Road	Slope 90°	bend in road			
		5" Sugar	15.9'	N03°E	10-29-89	V.H.M. K.M.	#3 Pg59	
		3½" Sugar	15.2'	S50°W	10-29-89	V.H.M. K.M.		
		5" Sugar	11.1'	S33°E	10-29-89	V.H.M. K.M.		
		Gum	1.5'	N55E	10-29-89	VHM K.M.		

QUARTER SECTION CORNER
 Sec 14 & 15, T6S, R4E
 HARRISON CO., IN.

MONUMENT IS SITUATED @ TOE
 OF ROAD SLOPE - CORNER
 ROAD MARKS DOUBLED
 IN ROW.

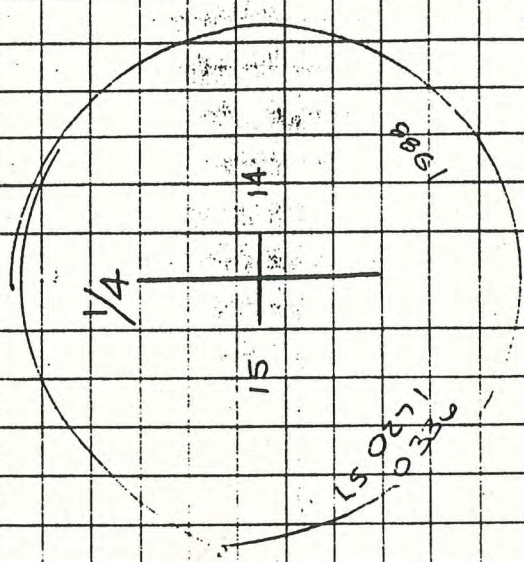
VHM
 N.M.

10-29-08

CLEAR

17-I

SET 30" ALUM. PIPES TO
 REPAIR STONE RECOVER, BUT
 BROKEN @ 12" BELOW GRADE.



SUGAR	SUGAR	SUGAR	SUGAR	SUGAR
5"	3 1/2'	5 3/8'	5'	9'
N 03° E	S 50° W	S 33° E	S 33° E	N 15° E
15.0'	15.2'	11.1'	15'	15'

PAGE 59
 17-I

HARRISON

COUNTY

17-M

PRINCIPAL MERIDIAN

2ND

RANGE 4 EAST

TOWNSHIP 6

CORNER 17-M

LOCATION	DESCRIPTION OF MONUMENT		DISTANCE FROM CORNER	BEARING FROM CORNER	DATE CHECKED	CHECKED BY	FIELD BOOK	REMARKS
	MONUMENT	REFERENCE						
Sec. Corner Sec. 14, 15 22, & 23	Set 30" Alum. Monument		5.2'	S89'E	10-29-89	VHM KM	#3 Pg60	Sign Placed
		9" Sugar	10.4'	N03°W	10-29-89	VHM KM		Sign, Placed
		8" Sugar	11.5	N80°W	10-29-89	VHM KM		

SECTION CORNER
 Sec 14, 15, 22, 23, T6S, R4E
 MARK 522

BS 15	K	11.014	
512		0.0000	
		179.5952	
653	513	2.152721	2.23
		85.2719	

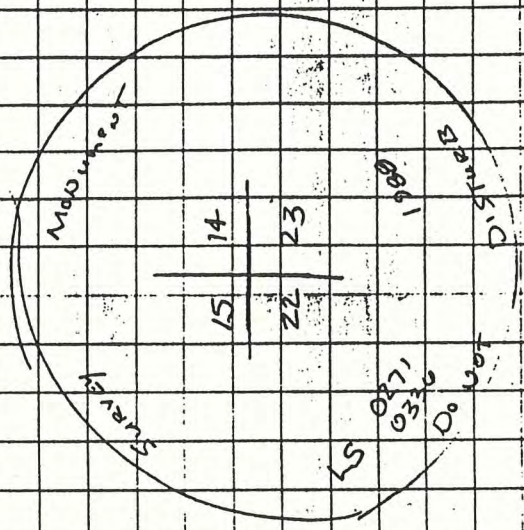
VHM
 A.M

Sunny
 Mild

17-M

10-29-83

Set 30" ALUM. MON.



WITNESSES ESTABLISHED

EX PIN	SUGAR	SUGAR
PIPE	9"	8"
5.89'E	MON	4.80'W
5.2'	14.4'	11.5'
	SIGN	

19-E

HARRISON COUNTY

TOWNSHIP 6 SOUTH RANGE 4 EAST 2 ND PRINCIPAL MERIDIAN

CORNER 19-E

TOWNSHIP 6 SOUTH

RANGE 4 EAST

2 ND PRINCIPAL MERIDIAN

LOCATION	DESCRIPTION OF MONUMENT		DISTANCE FROM CORNER	BEARING FROM CORNER	DATE CHECKED	CHECKED BY	FIELD BOOK	REMARKS
	MONUMENT	REFERENCE						
N.E. Corner of the N.W $\frac{1}{4}$ of Section 11	Stone	11" Poplar	12.90	S72-20-E	10-14-81	M.B.	#1 P ₆ .56	Sign Placed
		18" Beech	28.32	S16-40-E	10-14-81	M.B.		Sign Placed
		12" Maple	23.93	N39-30-W	10-14-81	M.B.		Sign Placed

Original does not call out Stone in

T6 R4 S11

19E

19-E

E-19

DIETZGEN NO. 385-3

P.C. MAX BROWN
H.C. GREG SPEARS
M.C. TED BROWN

10-14-81

4N

NE CORNER OF THE NW 1/4
OF SEC #11 T6S R4E

12" MAPLE
NAIL IN WEST SIDE
14" ABOVE GROUND

N 59° 20' W
23.73

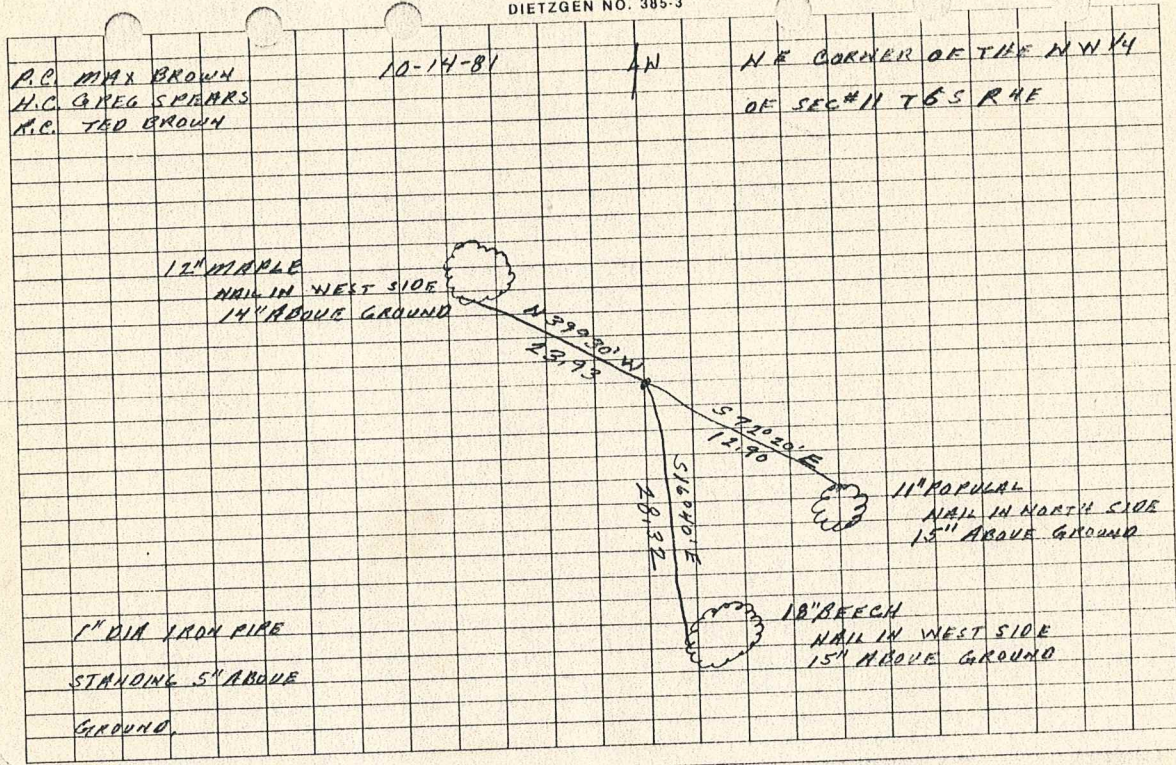
S 70° 20' E
12.90

S 18° 01' E
28.32

11" POPULAR
NAIL IN NORTH SIDE
15" ABOVE GROUND

1" DIA IRON PIPE
STANDING 5" ABOVE
GROUND.

18" BEECH
NAIL IN WEST SIDE
15" ABOVE GROUND



CORNER RECORD

HARRISON COUNTY

CORNER 19-F TOWNSHIP 6 SOUTH RANGE 4 EAST 2 ND PRINCIPAL MERIDIAN

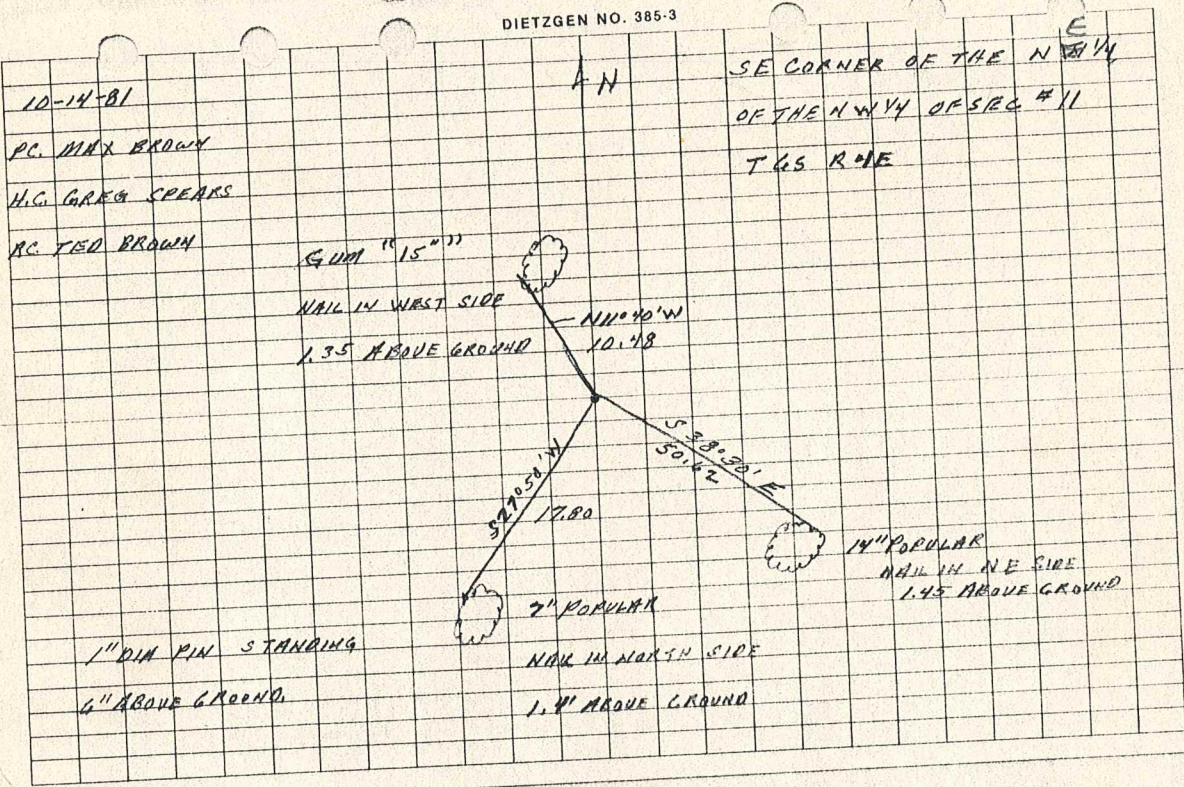
LOCATION	DESCRIPTION OF		DISTANCE FROM CORNER	BEARING FROM CORNER	DATE CHECKED	CHECKED BY	FIELD BOOK	REMARKS
	MONUMENT	REFERENCE						
S.E. Corner of the N.E. $\frac{1}{4}$ OF the N.W. $\frac{1}{4}$ of Section 11	Stone	15" Gum	10.48	N11-40W	10-14-81	M.B.	#196.55	Sign Placed
		14" Poplar	50.62	S38-30E	10-14-81	M.B.		Sign Placed
		7" Poplar	17.80	S27-50W	10-14-81	M.B.		Sign Placed

*No Stone Called out
in Original
Book / Page 55
T 6 R 4 S 11*

19-F

F-19

DIETZGEN NO. 385-3



CORNER RECORD

PAGE _____

19-G

HARRISON COUNTY

CORNER 19-G TOWNSHIP 6 SOUTH RANGE 4 EAST 2 ND PRINCIPAL MERIDIAN

LOCATION	DESCRIPTION OF		DISTANCE FROM CORNER	BEARING FROM CORNER	DATE CHECKED	CHECKED BY	FIELD BOOK	REMARKS
	MONUMENT	REFERENCE						
S.E. Corner of the N.W. 1/4 OF Section 11	Stone	6" Dog Wood	23.8	N5-6E	10-14-81	M.B.	#176.57	Sign Placed
		16" White Oak	10.41	S61-56W	10-14-81	M.B.		Sign Placed
		16" White Oak	31.65	N47-52W	10-14-81	M.B.		Sign Placed

19-G

G-19

DIETZGEN NO. 385-3

P.C. MAX BROWN
H.C. GREG SPEARS
R.C. TED BROWN

10-14-81

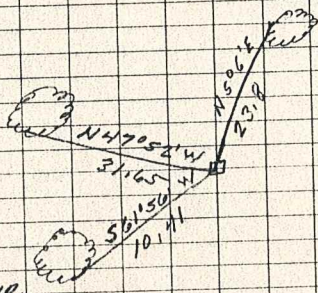
AN

SE CORNER OF THE NW 1/4
OF SEC. 11 T6S R4E

16" DIA WHITE OAK
NAIL IN SOUTH SIDE
15" ABOVE GROUND.

WHITE OAK 16" DIA
NAIL IN SOUTH WEST
SIDE 15" ABOVE GROUND.

6" DOG WOOD
NAIL IN WEST SIDE
16" ABOVE GROUND.



BROKEN OFF LIMESTONE
5" X 1" AND FLUSH WITH
THE GROUND AND MARKED
BY A 1" DIA STEEL PIPE.

HARRISON

COUNTY

19-I

PRINCIPAL MERIDIAN

CORNER 19-I

TOWNSHIP 6

RANGE 4 EAST

2ND

LOCATION	DESCRIPTION OF		DISTANCE FROM CORNER	BEARING FROM CORNER	DATE CHECKED	CHECKED BY	FIELD BOOK	REMARKS
	MONUMENT	REFERENCE						
Quarter Sec. cor. Sec. 11&14	REBAR w/cap over old stone	Power Pole	570°	5.2	10-29-89	V.H.W & K.M.	#3 Pg57	
		Poplar 12"	N42°E	45.45	10-29-89	↓		
		18" Poplar	S40°E	52.3	10-29-89			

CORNER RECORD

PAGE _____

HARRISON COUNTY

20-E

CORNER 20-E TOWNSHIP 6 SOUTH

RANGE 4 EAST 2 ND PRINCIPAL MERIDIAN

LOCATION	DESCRIPTION OF		DISTANCE FROM CORNER	BEARING FROM CORNER	DATE CHECKED	CHECKED BY	FIELD BOOK	REMARKS
	MONUMENT	REFERENCE						
N.W. Corner of The N.E. $\frac{1}{4}$ of The N.E. $\frac{1}{4}$ of Section 11	Stone	22" Oak	7.80	East	10-9-81	M.B.	#1 Pg. 51	Sign Placed
		5" Maple	29.26	S32-20'E.	10-9-81	M.B.		Sign Placed
		12" Oak	11.82	N85-10'W.	10-9-81	M.B.		Sign Placed

20-E

20-E

DIETZGEN NO. 385-3

X MAX BROWN

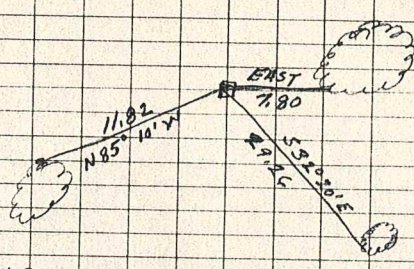
10-9-81

A NORTH

STONE MARKING THE
NW COR. OF THE NE 1/4
OF THE NE 1/4 OF
SEC 11 T6S R 4E

H.C. GREG SPENRS

R.C. TED BROWN



OAK - 22" DIA

NAIL 12" ABOVE GROUND
ON SOUTH SIDE.

12" OAK

NAIL 1.3' ABOVE

GROUND ON NORTH SIDE

WHITE 5" DIA

NAIL IN WEST SIDE

12" ABOVE GROUND.

LIMESTONE ROCK
7" X 4" STANDING 10"
ABOVE GROUND NO "X"
IN TOP.

20-F

CORNER RECORD

HARRISON COUNTY

20-F
RANGE 4 EAST 2 ND PRINCIPAL MERIDIAN

CORNER 20-F

TOWNSHIP 6 SOUTH

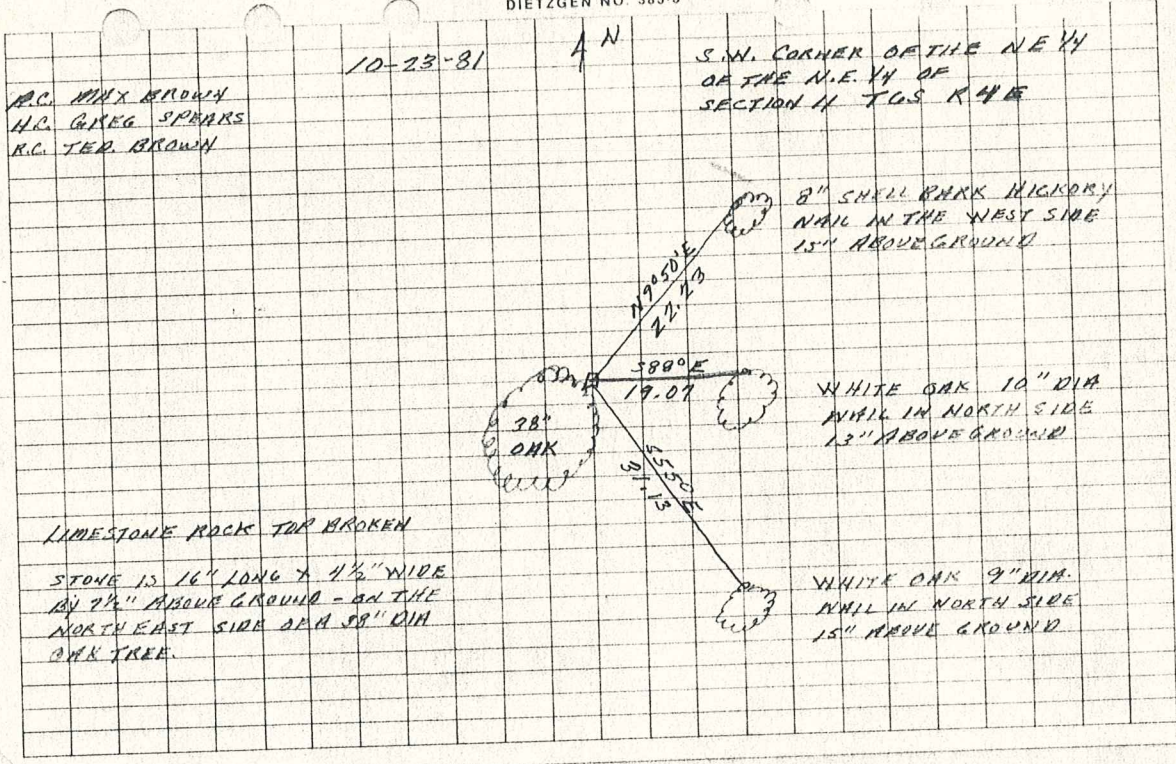
RANGE 4 EAST 2 ND PRINCIPAL MERIDIAN

LOCATION	DESCRIPTION OF		DISTANCE FROM CORNER	BEARING FROM CORNER	DATE CHECKED	CHECKED BY	FIELD BOOK	REMARKS
	MONUMENT	REFERENCE						
S.W. Corner of the N.E. 1/4 of the N.E. 1/4 of Section 11	Stone	8" Shell Bark Hickory	22.23	N9-50E	10-23-81	M.B.	#1 P6.59	Sign Placed
		10" White Oak	19.07	S88E	10-23-81	M.B.		Sign Placed
		9" White Oak	31.13	S55E	10-23-81	M.B.		Sign Placed

20-F

7-20

DIETZGEN NO. 385-3



HARRISON

COUNTY

20-G

PRINCIPAL MERIDIAN

2ND

EAST

4

RANGE

6

TOWNSHIP

CORNER 20-G

LOCATION	DESCRIPTION OF		DISTANCE FROM CORNER	BEARING FROM CORNER	DATE CHECKED	CHECKED BY	FIELD BOOK	REMARKS
	MONUMENT	REFERENCE						
S.E. Corner S.W. $\frac{1}{4}$, N.E. $\frac{1}{4}$ Section 11	#5 rebar Stone	19" Oak		East 24.88	4-6-87	T.B.	#3 Pg. 44	Sign Placed
		12" Hickory		South 7.74	4-6-87	T.B.		Sign Placed
		10" Oak		West 14.14	4-6-87	T.B.		Sign Placed

20-G

20-G

all trees have a base with
an aluminum nail in middle
all trees have a witness
sign.

Date 4-6-87

0.8' oak nail is on north
side + 1.2 up.

10 lbs 14.14

Party chief T. Brown
Head chain A. Clements
Rear chain P. O. Elm

stone is 9.50 x 0.30 x
thick with ground. The
top of stone has been
highly polished having
thereby left stone is
marked with a metal
point + sign + a #5 value.

1.6 oak nail is on south
side + 1.5 up.

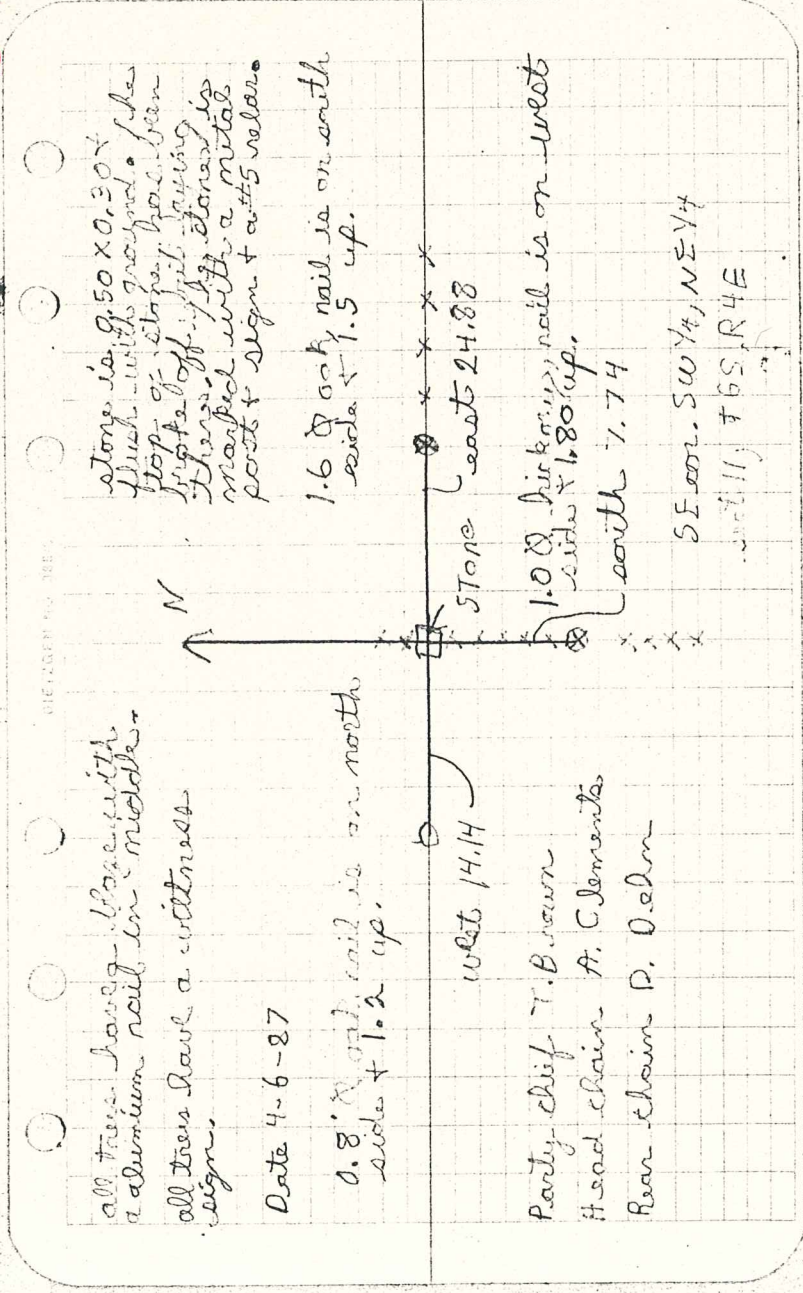
stone east 24.88

1.08 birch nail is on west
side + 1.80 up.
south 1.74

SE cor. SW 1/4, NE 1/4
sect 11, T6S, R4E

N

MEASURED BY DEB



21-F

CORNER RECORD

HARRISON COUNTY

RANGE 4 EAST 2 ND PRINCIPAL MERIDIAN

TOWNSHIP 6 SOUTH

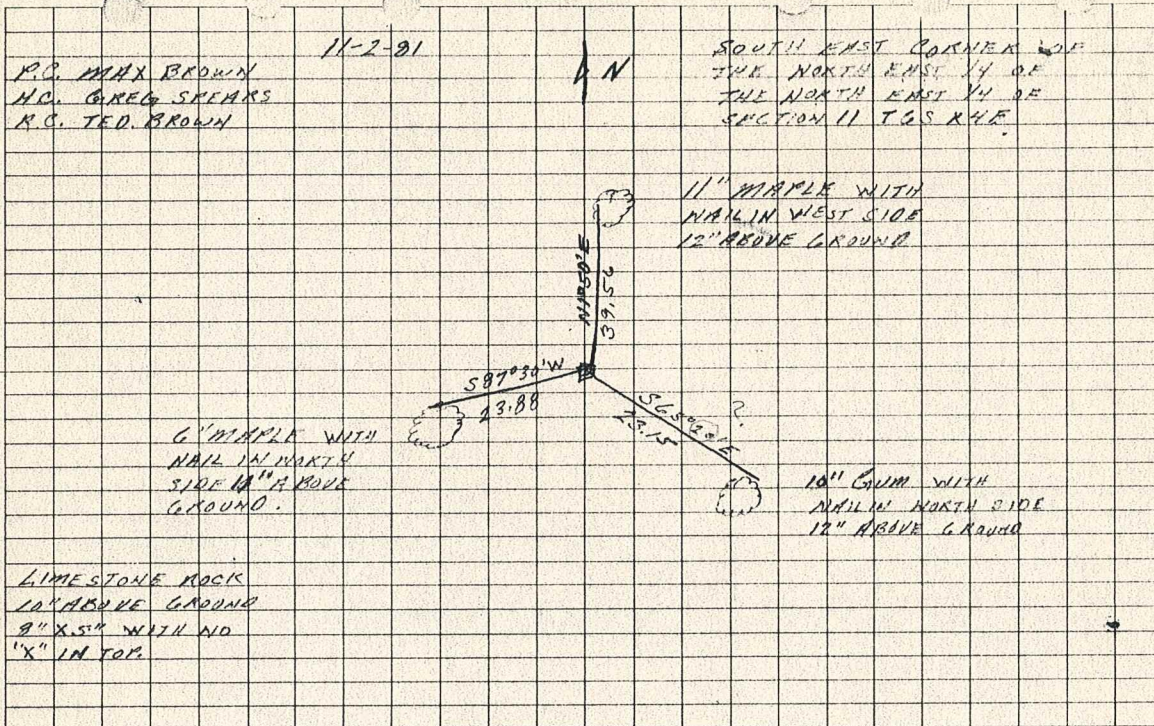
CORNER 21-F

LOCATION	DESCRIPTION OF MONUMENT		DISTANCE FROM CORNER	BEARING FROM CORNER	DATE CHECKED	CHECKED BY	FIELD BOOK	REMARKS
	MONUMENT	REFERENCE						
South East Cor. of the North East 1/4 of the North East 1/4 of Section 11	Stone	11" Maple	39.56	N1-50E	11-2-81	M.B.	#196.61	Sign Placed
		10" Gum	23.15	S65-20E	11-2-81	M.B.		Sign Placed
		6" Maple	23.88	S87-30W	11-2-81	M.B.		Sign Placed

21-F

7-21

DIETZGEN NO. 385-3



21-G

CORNER RECORD

HARRISON COUNTY

TOWNSHIP 6 SOUTH

RANGE 4 EAST 2 ND PRINCIPAL MERIDIAN

CORNER 21-G

TOWNSHIP 6 SOUTH

RANGE 4 EAST

2 ND PRINCIPAL MERIDIAN

LOCATION	DESCRIPTION OF MONUMENT		DISTANCE FROM CORNER	BEARING FROM CORNER	DATE CHECKED	CHECKED BY	FIELD BOOK	REMARKS
	MONUMENT	REFERENCE						
South East Cor. of the North East 1/4 of Sec. 11	Stone	8" Maple	22.16	S63-25W	10-30-81	M.B.	#1 Pg. 60	Sign Placed
		8" Cherry	27.60	N65-10W	10-30-81	M.B.		Sign Placed
		7" Poplar	41.45	N35-10W	10-30-81	M.B.		Sign Placed

D-21

21-G

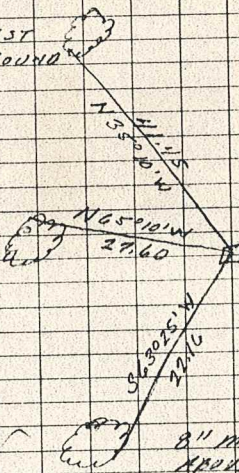
DIETZGEN NO. 385-3

P.C. MAX BROWN 10-30-81
 H.G. GREG SPEARS
 R.C. TED BROWN
 PAPER 7" DIA
 NAIL IN SOUTH WEST
 SIDE 18" ABOVE GROUND

A N

SOUTH EAST CORNER OF
 THE NORTHEAST 1/4 OF
 SEC # 11 T6S R4E

CHERRY 8" DIA
 NAIL IN NORTH SIDE
 16" ABOVE GROUND



8" MAPLE WITH NAIL 16"
 ABOVE GROUND FOR THE
 SOUTH SIDE

LIMESTONE ROCK NO "X" IN TOP
 9" X 6" X 9" ABOVE GROUND
 2' NORTH WEST OF A 4" MAPLE
 3' EAST OF A FENCE LINE RUNNING
 NORTH & SOUTH

HARRISON

COUNTY

21-1

CORNER 21-1

TOWNSHIP 6

RANGE 4

EAST

2ND

PRINCIPAL MERIDIAN

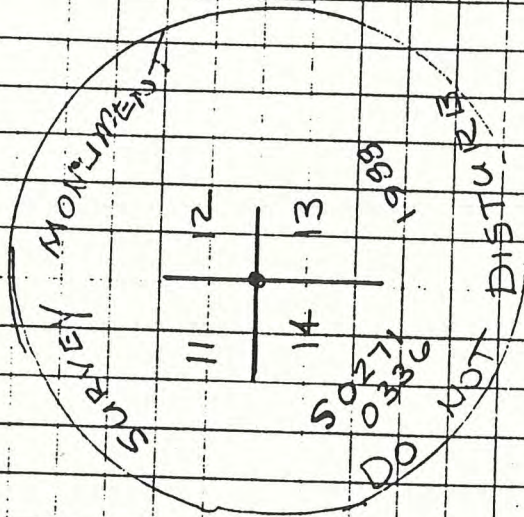
LOCATION	DESCRIPTION OF		DISTANCE FROM CORNER	BEARING FROM CORNER	DATE CHECKED	CHECKED BY	FIELD BOOK	REMARKS
	MONUMENT	REFERENCE						
Sec. Corner Sec. 11, 12, 13, & 14		Monument on West upper Bank of Mosquito Creek						
		12" Maple	33.3	N75°W	10-29-89	V.H.M. K.M.	#3 Pg58	Sign Placed
		18" Maple	28.3	N24°W	10-29-89	V.H.M. K.M.		Sign Placed
		30" Sycamore	10.7'	N? E	10-29-89	V.H.M. K.M.		Sign Placed

SEC. CORNER	SEC. 14, 12, 13, 14, T6S, R4E	HARRISON CO., IN.	11212. 2	DIST
685	3100120 132.2125	CHAND 68.71	0.0000 190.2227	
MONUMENT IS SITUATED ON WEST UPPER BANK OF MOSQUITO CREEK.				

V.H.M.
K.M.

10-29-88

SET 30" ALUM. MON



WITNESS ESTABLISHED
12" MAPLE
12" 18" 30"
N75°W 283 SIGN
N25°W 10.7'


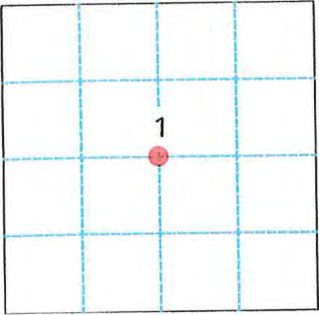
CURE
CWL

Index No. _____

Harrison Co. No. C-23

T 6 S R 4 E 2nd Mer. County Harrison State Indiana

Center Quarter Corner common to section 1

EXISTING SURVEYS																			
Original Government Survey	Original Evidence Found																		
Year surveyed <u>N/A</u> Original monument _____ <small>(wood post, ston, pile of stones, etc.)</small> <hr/> <p style="text-align: center;">Bearing Trees</p> Species _____ Diameter _____ Bearing _____ Distance _____	Year of search <u>N/A</u> By _____ Monument found _____ <hr/> <p style="text-align: center;">Original Bearing Trees Found</p> Species _____ Diameter _____ Bearing _____ Distance _____																		
Subsequent Corner Restoration	Evidence of Subsequent Corner Restoration Found																		
Year surveyed <u>N/A</u> By _____ Where filed or recorded _____ Monument _____ <small>(Original, concrete post, iron rod, etc...)</small> <hr/> <p style="text-align: center;">Bearing Trees, Reference Objects</p> Species _____ Diameter _____ Bearing _____ Distance _____	Year of search <u>2011</u> By <u>VHM</u> <u>Recovered 1/4" crimped pipe with short "T" post on West. See 2002 Surveys in Survey Book 5, Pages 406 & 407.</u> 																		
	<p style="text-align: center;">Relation of Evidence to Record Features Along Section Lines</p> Section line to sections _____ Object _____ Record Distance _____ Measured Distance _____ <hr/> <p style="text-align: center;">Other Evidence</p> Describe evidence of use and occupation such as roads, fences, clearings, timber cutting lines, plantations, etc... Cite source of testimony, if any. _____ <hr/> <p style="text-align: center;">Perpetuation Record</p> Monument and accessories established. Include brief description of area. <u>The monument was left in place as recovered. Set carsonite post 0.4' North.</u> <table border="1" style="width:100%; border-collapse: collapse; margin-top: 5px;"> <tr> <td style="width: 33%;">Hickory</td> <td style="width: 33%;">Corner Post</td> <td style="width: 33%;">Utility Pole</td> </tr> <tr> <td>10"</td> <td>Frame Enclosure</td> <td>W/Trans.</td> </tr> <tr> <td>S 67° W</td> <td>S 71° E</td> <td>N 20° E</td> </tr> <tr> <td>24.65'</td> <td>9.9'</td> <td>32.22'</td> </tr> <tr> <td>Mag Nail +0.6'</td> <td></td> <td>Mag Nail + 0.6'</td> </tr> <tr> <td>On North side W/Sign</td> <td></td> <td>On West side</td> </tr> </table> <hr/> Certified corner restoration certificate prepared Yes _____ No <u>X</u> Filed in county records at _____ Date _____ County No. _____ Identified on aerial photo No. _____ Which is filed at _____ ISPCS East Zone 1983 Datum (2011) USSF Resource Grade N: 1008498.5 E: 226108.1	Hickory	Corner Post	Utility Pole	10"	Frame Enclosure	W/Trans.	S 67° W	S 71° E	N 20° E	24.65'	9.9'	32.22'	Mag Nail +0.6'		Mag Nail + 0.6'	On North side W/Sign		On West side
Hickory	Corner Post	Utility Pole																	
10"	Frame Enclosure	W/Trans.																	
S 67° W	S 71° E	N 20° E																	
24.65'	9.9'	32.22'																	
Mag Nail +0.6'		Mag Nail + 0.6'																	
On North side W/Sign		On West side																	
<p>At time of search:</p> 1. Did you have the record description? Yes <u>X</u> No _____ 2. How was search area located? pacing, chaining, photo, maps, etc. <u>SURVEYING</u> 3. Man hours spent in search <u>N/A</u> 4. Do you think additional search might recover evidence? Yes _____ No <u>X</u> 5. Signature <u>Vicki M.</u>																			

HARRISON

COUNTY

25-E

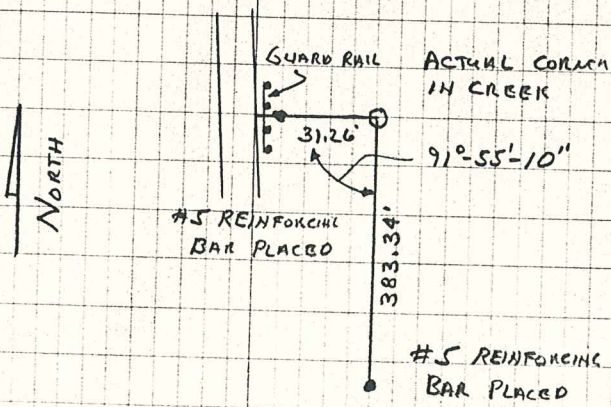
CORNER 25-E TOWNSHIP 6 RANGE 4 EAST 2ND PRINCIPAL MERIDIAN

LOCATION	DESCRIPTION OF		DISTANCE FROM CORNER	BEARING FROM CORNER	DATE CHECKED	CHECKED BY	FIELD BOOK	REMARKS
	MONUMENT	REFERENCE						
S.E. Corner Section 1 Actual Stone In Creek	#5 Rebar	Guard Rail	31.26	91°55'-10	12-17-86	M.M.	#3 Pg. 46	
		#5 Rebar	31.26	383.34	12-17-86	M.M.		
		#5 Rebar			12-17-86	M.M.		

25-E

25-E

REFERENCE S.E. CORNER
SECTION 1 TOWNSHIP 6S RANGE 4 EAST
11-86



12-17-86

⌈ MARION MOSES

CHAINMEN JESSIE GOINS
JERRY TUEL

DIETZGEN NO. 385.3