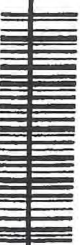


21-E

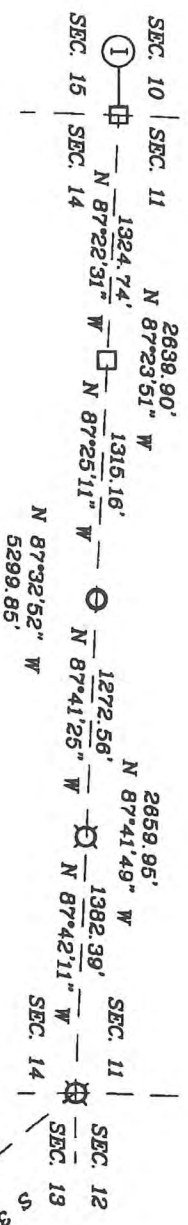
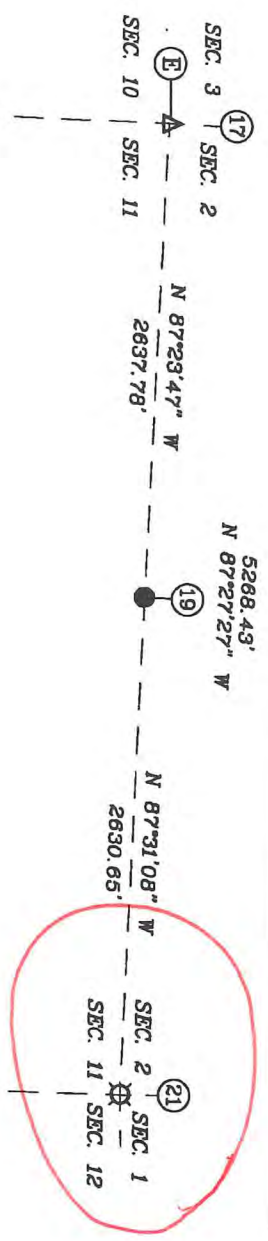


8 1 8 8 8 0 0
Tx:4014226

SECTION 11,
TOWNSHIP 4 SOUTH, RANGE 3 EAST,
HARRISON TOWNSHIP,
HARRISON COUNTY, INDIANA

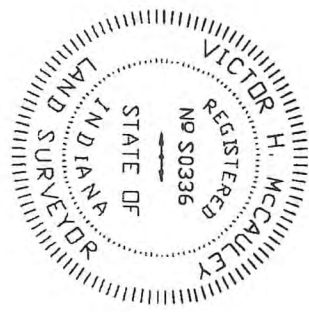
INST# 201206847
BARBARA BEST
HARRISON COUNTY RECORDER
12/20/2012 3:14 PM
PAGE 1 OF 4

FOR RECORDING INFORMATION



SURVEYOR'S CERTIFICATE

I, VICTOR H. MCCAULEY, PROFESSIONAL LAND SURVEYOR, REGISTERED BY THE LAWS OF THE STATE OF INDIANA, HEREBY DECLARE THAT I HAVE RECOVERED, RESTORED AND PERPETUATED THE CORNERS SHOWN HEREON IN SECTION 11, TOWNSHIP 4, SOUTH, RANGE 3 EAST, HARRISON TOWNSHIP, HARRISON COUNTY, INDIANA IN ACCORDANCE WITH IAC TITLE 865, THE RULES FOR SURVEYS OF PUBLIC LANDS AND THE STATUTES OF THE STATE OF INDIANA, ALL TO THE BEST OF MY KNOWLEDGE AND BELIEF.



VICTOR H. MCCAULEY, INDIANA LSF 50636
DATE OF SURVEY: NOV. 30, 2012
LAST DATE OF FIELD WORK: NOV. 22, 2012

DECLARATION

I affirm under the penalties of perjury, that I have taken reasonable care to read and check each Social Security number in this document, unless required by law.

DECLARANT

Signature of Declarant: *V.H.M.*
VICTOR H. MCCAULEY
Printed Name of Declarant



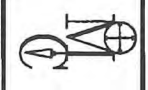
GRID NORTH PER INDIANA STATE PLANE COORDINATE SYSTEM, EAST ZONE, 1883 (2012) DATUM, PER C.P.S.

LEGEND

- HISTORICAL STONE (SEE REPORT)
- EXISTING PIPE (SEE REPORT)
- EXISTING STEEL PIN W/CAP (SEE REPORT)
- STEEL PIN W/3/4" ALUM. DISC STAMPED TO DEPICT CORNER POSITION (SEE REPORT)
- EXISTING STEEL PIN (SEE REPORT)
- EXISTING MAG NAIL (SEE REPORT)
- EXISTING RAILROAD SPIKE (SEE REPORT)
- USGS W-13 N: 1062338.03 E: 192561.02
- HARRISON COUNTY REFERENCE INDEX NUMBER

THIS SURVEY IS BASED ON THE INDIANA STATE PLANE COORDINATE SYSTEM, EAST ZONE, 1883 (2012) ADJUSTMENT U.S. SURVEY FOOT. THE DISTANCES SHOWN ARE SEA GRID DISTANCES BASED ON COMBINED SCALE FACTOR OF 0.99998222. TO CONVERT THE SURVEY DISTANCES TO HORIZONTAL GROUND LEVEL DISTANCES DIVIDE THE SURVEY DISTANCES BY THE SCALE FACTOR.

FOR A MORE COMPLETE DESCRIPTION OF EACH CORNER SEE THE LAND CORNER RECORD CARD ON FILE WITH THE HARRISON COUNTY SURVEYOR. THIS SURVEY IS NOT COMPLETE WITHOUT THE SURVEY PLAT AND SURVEYOR'S REPORT.



MCCAULEY & COMPANY, INC., P.S.C.
PROFESSIONAL LAND SURVEYORS
P.O. BOX 39
ELIZABETH, IN 47117-0039
TELEPHONE: 812-989-2188
mccauleypsc@trivulder.com

FOR: HARRISON COUNTY SURVEYOR
HAROLD KINSTIVER
245 ATWOOD STREET, SUITE 219
CORYDON, IN 47112

M 1-8-13

PLAT OF SURVEY
2012 HARRISON COUNTY PERPETUATION PROJECT

SITUATED IN SECTION 11, TOWNSHIP 4 SOUTH, RANGE 3 EAST, HARRISON TOWNSHIP, HARRISON,
INDIANA.

REPORT OF SURVEY

THIS SURVEY WAS PERFORMED FOR HAROLD KLINSTVER, HARRISON COUNTY SURVEYOR AS A PERPETUATION PROJECT FOR THE CORNERS IN SECTION 11, TOWNSHIP 4 SOUTH, RANGE 3 EAST, HARRISON TOWNSHIP, HARRISON, INDIANA. THIS SURVEY IS A CONTINUATION OF SEVERAL PRIOR SURVEYS, IN THE SAME VICINITY, BY THIS FIRM.

THE ORIGINAL GOVERNMENT SURVEYS WERE CONDUCTED BY JOSEPH H. SARWELL, DEPUTY SURVEYOR IN JANUARY OF 1806. SUBSEQUENT SURVEYS WERE PERFORMED BY HARRISON COUNTY SURVEYORS AND PRIVATE SURVEYORS AS CITED BELOW. THE ORIGINAL AND SUBSEQUENT SURVEYOR NOTES ARE ON FILE IN THE HARRISON COUNTY SURVEYOR'S OFFICE.

PRIOR TO PERFORMING THIS SURVEY, I REVIEWED THE AVAILABLE ORIGINAL, SUBSEQUENT AND PRIVATE SURVEY NOTES. I RESEARCHED PERTINENT DEEDS AND ADJOINING DEEDS. I CONTACTED ADJOINING LAND OWNERS, CONSULTED WITH THE HARRISON COUNTY SURVEYOR AND OTHER LOCAL SURVEYORS FOR INFORMATION PERTAINING TO THE LOCATION OF CORNERS NEEDED TO PERFORM THIS SURVEY.

THE CORNERS RECOVERED, RESTORED AND PERPETUATED BY THIS SURVEY ARE MARKED IN THE LEGEND. THE BEARING BETWEEN MONUMENTS IS GRID NORTH AS DETERMINED BY GPS SURVEYS.

HORIZONTAL AND VERTICAL CONTROLS FOR THIS SURVEY ARE BASED ON STATIC AND RTK GPS METHODS AND COORDINATES WERE CONSTRAINED TO AN NGS OPUS SOLUTION POSITION, INDIANA STATE PLANE COORDINATE SYSTEM, EAST ZONE, 1983 (2012) DATUM, FOR AN ON-SITE GPS BASE STATION. THIS IS A RETRACEMENT "RURAL CLASS SURVEY" AS DEFINED BY 865 IAC 1-12 SECTION 7, PARAGRAPH 3 (e-3) AND THE FIELD WORK IS WITHIN THE "RELATIVE POSITIONAL ACCURACY" SPECIFICATIONS CITED THEREIN.

CONVENTIONAL TERRESTRIAL TRAVERSES WERE USED TO DETERMINE CORNER POSITIONS THAT WERE DEEMED UNSUITABLE FOR GPS OBSERVATIONS. THE POSITION OF MONUMENTS WAS VERIFIED WITH REDUNDANT MEASUREMENTS. ALL TRAVERSES WERE EITHER CLOSED TRAVERSES OR WERE CONTROLLED BY GPS SURVEY METHODS

THIS SURVEY IS BASED ON THE INDIANA STATE PLANE COORDINATE SYSTEM, EAST ZONE, 1983 (2012) DATUM, U.S. SURVEY FOOT. THE DISTANCES SHOWN ARE SEA LEVEL GRID DISTANCES, BASED ON A COMBINED SCALE FACTOR OF 0.99996222. TO CONVERT SURVEY DISTANCES TO HORIZONTAL GROUND LEVEL DISTANCES, DIVIDE THE SURVEY DISTANCES BY THE SCALE FACTOR

EXISTING MONUMENTS RECOVERED

E-17 SECTION CORNER COMMON TO SECTIONS 2, 3, 10 & 11, T-4-S, R-3-E

RECOVERED MAG HUB SET IN CONCRETE PLUG IN THE INTERSECTION OF STEAM ENGINE ROAD AND MATHESS ROAD. THE MONUMENT IS AT A VERY OLD AND PROMINENT CULTURAL INTERSECTION. THE POSITION OF THE CORNER IS SUPPORTED BY MEASUREMENTS TO ADJACENT MONUMENTS IN ALL CARDINAL DIRECTIONS AND BY VERY OLD AND DISTINCT CULTURAL FEATURES IN THE VICINITY. CORNER ACCESSORIES ESTABLISHED:

HACKBERRY 11", S66°E, 22.10' TO A MAG NAIL 1.1' UP ON SW SIDE
TEL PED, N78°W, 66.43'
SUGAR 31", N41°W, 32.7'
STOP SIGN POST, N30°W, 18.69' W/HCSS

E-21 SECTION CORNER TO SECTIONS 1, 2, 11 & 12, T-4-S, R-3-E

RECOVERED #4 SPC-LS131 ON THE NORTH SIDE OF A FENCE CORNER POST. THE PIN PROJECTS 0.2' AND IS AT THE CORNER BETWEEN FIELDS. THE MONUMENT WAS LEFT IN PLACE AS RECOVERED. THIS CORNER HAS A LONG LINAGE AND HAS BEEN USED BY LOCAL SURVEYORS AS THE SECTION CORNER. THE POSITION OF THE CORNER IS SUPPORTED BY MEASUREMENTS TO ADJACENT MONUMENTS IN ALL CARDINAL DIRECTIONS AND BY VERY OLD AND DISTINCT CULTURAL FEATURES IN THE VICINITY. CORNER ACCESSORIES ESTABLISHED:

STONE, S2° 28' 45" W, 88.28'
ELM 12", N58°E, 1.28' TO A MAG NAIL 0.6' UP ON NW SIDE
R. OAK 31", S87°W, 17.15' TO A MAG NAIL 1.0' UP ON N SIDE
FENCE POST, SOUTH, 0.4' W/HCSS

Job #20077-11

2

PLAT OF SURVEY
2012 HARRISON COUNTY PERPETUATION PROJECT

SITUATED IN SECTION 11, TOWNSHIP 4 SOUTH, RANGE 3 EAST, HARRISON TOWNSHIP, HARRISON,
INDIANA.

REPORT OF SURVEY

THIS SURVEY WAS PERFORMED FOR HAROLD KLINSTVER, HARRISON COUNTY SURVEYOR AS A PERPETUATION PROJECT FOR THE CORNERS IN SECTION 11, TOWNSHIP 4 SOUTH, RANGE 3 EAST, HARRISON TOWNSHIP, HARRISON, INDIANA. THIS SURVEY IS A CONTINUATION OF SEVERAL PRIOR SURVEYS, IN THE SAME VICINITY, BY THIS FIRM.

THE ORIGINAL GOVERNMENT SURVEYS WERE CONDUCTED BY JOSEPH H. SARWELL, DEPUTY SURVEYOR IN JANUARY OF 1806. SUBSEQUENT SURVEYS WERE PERFORMED BY HARRISON COUNTY SURVEYORS AND PRIVATE SURVEYORS AS CITED BELOW. THE ORIGINAL AND SUBSEQUENT SURVEYOR NOTES ARE ON FILE IN THE HARRISON COUNTY SURVEYOR'S OFFICE.

PRIOR TO PERFORMING THIS SURVEY, I REVIEWED THE AVAILABLE ORIGINAL, SUBSEQUENT AND PRIVATE SURVEY NOTES. I RESEARCHED PERTINENT DEEDS AND ADJOINING DEEDS. I CONTACTED ADJOINING LAND OWNERS, CONSULTED WITH THE HARRISON COUNTY SURVEYOR AND OTHER LOCAL SURVEYORS FOR INFORMATION PERTAINING TO THE LOCATION OF CORNERS NEEDED TO PERFORM THIS SURVEY.

THE CORNERS RECOVERED, RESTORED AND PERPETUATED BY THIS SURVEY ARE MARKED IN THE LEGEND. THE BEARING BETWEEN MONUMENTS IS GRID NORTH AS DETERMINED BY GPS SURVEYS.

HORIZONTAL AND VERTICAL CONTROLS FOR THIS SURVEY ARE BASED ON STATTC AND RTK GPS METHODS AND COORDINATES WERE CONSTRAINED TO AN NGS OPUS SOLUTION POSITION, INDIANA STATE PLANE COORDINATE SYSTEM, EAST ZONE, 1983 (2012) DATUM, FOR AN ON-SITE GPS BASE STATION. THIS IS A RETRACEMENT "RURAL CLASS SURVEY" AS DEFINED BY 865 IAC 1-12 SECTION 7, PARAGRAPH 3 (e-3) AND THE FIELD WORK IS WITHIN THE "RELATIVE POSITIONAL ACCURACY" SPECIFICATIONS CITED THEREIN.

CONVENTIONAL TERRESTRIAL TRAVERSES WERE USED TO DETERMINE CORNER POSITIONS THAT WERE DEEMED UNSUITABLE FOR GPS OBSERVATIONS. THE POSITION OF MONUMENTS WAS VERIFIED WITH REDUNDANT MEASUREMENTS. ALL TRAVERSES WERE EITHER CLOSED TRAVERSES OR WERE CONTROLLED BY GPS SURVEY METHODS

THIS SURVEY IS BASED ON THE INDIANA STATE PLANE COORDINATE SYSTEM, EAST ZONE, 1983 (2012) DATUM, U.S. SURVEY FOOT. THE DISTANCES SHOWN ARE SEA LEVEL GRID DISTANCES, BASED ON A COMBINED SCALE FACTOR OF 0.99996222. TO CONVERT SURVEY DISTANCES TO HORIZONTAL GROUND LEVEL DISTANCES, DIVIDE THE SURVEY DISTANCES BY THE SCALE FACTOR

EXISTING MONUMENTS RECOVERED

E-17 SECTION CORNER COMMON TO SECTIONS 2, 3, 10 & 11, T-4-S, R-3-E

RECOVERED MAG HUB SET IN CONCRETE PLUG IN THE INTERSECTION OF STEAM ENGINE ROAD AND MATHESS ROAD. THE MONUMENT IS AT A VERY OLD AND PROMINENT CULTURAL INTERSECTION. THE POSITION OF THE CORNER IS SUPPORTED BY MEASUREMENTS TO ADJACENT MONUMENTS IN ALL CARDINAL DIRECTIONS AND BY VERY OLD AND DISTINCT CULTURAL FEATURES IN THE VICINITY. CORNER ACCESSORIES ESTABLISHED:

HACKBERRY 11", S66°E, 22.10' TO A MAG NAIL 1.1' UP ON SW SIDE
TEL PED, N78°W, 66.43'
SUGAR 31", N41°W, 32.7'
STOP SIGN POST, N30°W, 18.69' W/HCSS

E-21 SECTION CORNER TO SECTIONS 1, 2, 11 & 12, T-4-S, R-3-E

RECOVERED #4 SPC. L5131 ON THE NORTH SIDE OF A FENCE CORNER POST. THE PIN PROJECTS 0.2' AND IS AT THE CORNER BETWEEN FIELDS. THE MONUMENT WAS LEFT IN PLACE AS RECOVERED. THIS CORNER HAS A LONG LINAGE AND HAS BEEN USED BY LOCAL SURVEYORS AS THE SECTION CORNER. THE POSITION OF THE CORNER IS SUPPORTED BY MEASUREMENTS TO ADJACENT MONUMENTS IN ALL CARDINAL DIRECTIONS AND BY VERY OLD AND DISTINCT CULTURAL FEATURES IN THE VICINITY. CORNER ACCESSORIES ESTABLISHED:

CARSONITE POST, WEST, 0.7'
STONE, S2° 28' 45" W, 88.28'
ELM 12", N58°E, 1.28' TO A MAG NAIL 0.6' UP ON NW SIDE
R. OAK 31", S87°W, 17.15' TO A MAG NAIL 1.0' UP ON N SIDE
FENCE POST, SOUTH, 0.4' W/HCSS

Job #20077-11

2

07-21

PLAT OF SURVEY
2012 HARRISON COUNTY PERPETUATION PROJECT

SITUATED IN SECTION 11, TOWNSHIP 4 SOUTH, RANGE 3 EAST, HARRISON TOWNSHIP, HARRISON,
INDIANA.

EXISTING MONUMENTS RECOVERED

G-21 QUARTER CORNER TO SECTIONS 11 & 12, T-4-S, R-3-E

RECOVERED RAILROAD SPIKE 0.2' DEEP IN SHILO ROAD AT CRUSHED STONE DRIVEWAY TO THE NORTH. SET A MAG NAIL IN A CONCRETE PLUG OVER THE MONUMENT. THE MONUMENT IS AT A VERY OLD AND PROMINENT CULTURAL INTERSECTION. THE POSITION OF THE CORNER IS SUPPORTED BY MEASUREMENTS TO ADJACENT MONUMENTS IN ALL CARDINAL DIRECTIONS AND BY VERY OLD AND DISTINCT CULTURAL FEATURES IN THE VICINITY. SEE SURVEYS OF RECORD IN SURVEY BOOK 4, PAGE 697 AND PLAT BOOK 4, PAGE 1. CORNER ACCESSORIES ESTABLISHED:
AILANTHUS TWIN 9", N2°E, 15.68' TO A MAG NAIL 0.6' UP ON W SIDE W/HCCSS
OLD POST, N63°W, 30.91' TO A MAG NAIL 0.6' UP ON NE SIDE
AUGER MAILBOX POST, S30°W, 17.0'

L17 SECTION CORNER TO SECTIONS 10, 11, 14 & 15.

RECOVERED LIMESTONE 1.1', N32°W FROM FENCE CORNER POST. SET CARSONITE POST 0.5' WEST AND PLACED A CAIRN OF ROCKS AROUND THE MONUMENT. THE MONUMENT WAS LEFT IN PLACE AS RECOVERED. THIS CORNER HAS A LONG LINAGE AND HAS BEEN USED BY LOCAL SURVEYORS AS THE SECTION CORNER FOR WELL OVER 15 YEARS. THE POSITION OF THE CORNER IS SUPPORTED BY MEASUREMENTS TO ADJACENT MONUMENTS IN ALL CARDINAL DIRECTIONS AND BY VERY OLD AND DISTINCT CULTURAL FEATURES IN THE VICINITY. SEE SURVEY RECORDED IN INSTRUMENT #200706479. CORNER ACCESSORIES ESTABLISHED:
HICKORY 7", N9°W, 10.27' TO A MAG NAIL 1.0' UP ON W SIDE
CHERRY 16", S45°E, 2.15' TO A MAG NAIL 0.6' UP IN NE SIDE
HACKBERRY 5", S49°W, 9.40' TO A MAG NAIL 1.0' UP IN NW SIDE

-19 QUARTER SECTION CORNER TO SECTIONS 11 & 14, T-4-S, R-3-E

RECOVERED STEEL PIN WITH CAP IN CULTIVATED FIELD. THE PIN IS AT A VERY OLD AND PROMINENT CULTURAL INTERSECTION. THE POSITION OF THE CORNER IS SUPPORTED BY MEASUREMENTS TO ADJACENT MONUMENTS IN ALL CARDINAL DIRECTIONS AND BY VERY OLD AND DISTINCT CULTURAL FEATURES IN THE VICINITY. SEE SURVEY RECORDED IN INSTRUMENT #200706479. SET A CARSONITE POST ON S SIDE OF MONUMENT. NO CORNER ACCESSORIES WERE AVAILABLE IN THE VICINITY.

L-21 SECTION CORNER TO SECTIONS 11, 12, 13 & 14, T-4-S, R-3-E

RECOVERED #5 STEEL PIN WITH CAP 1.5' DEEP IN A CULTIVATED FIELD AT A VERY OLD AND PROMINENT CULTURAL FEATURE. THE POSITION OF THE CORNER IS SUPPORTED BY MEASUREMENTS TO ADJACENT MONUMENTS IN ALL CARDINAL DIRECTIONS AND BY VERY OLD AND DISTINCT CULTURAL FEATURES IN THE VICINITY. NO CORNER ACCESSORIES WERE AVAILABLE IN THE VICINITY.

USGS MONUMENT W-13, 1937

USGS MONUMENT ON THE WEST SIDE OF OLD HIGHWAY 135 NEAR THE SE CORNER OF JORDAN CEMETERY.

FOR ADDITIONAL CORNER INFORMATION, SEE THE INDIVIDUAL CORNER RECORDS IN THE HARRISON COUNTY SURVEYORS OFFICE.

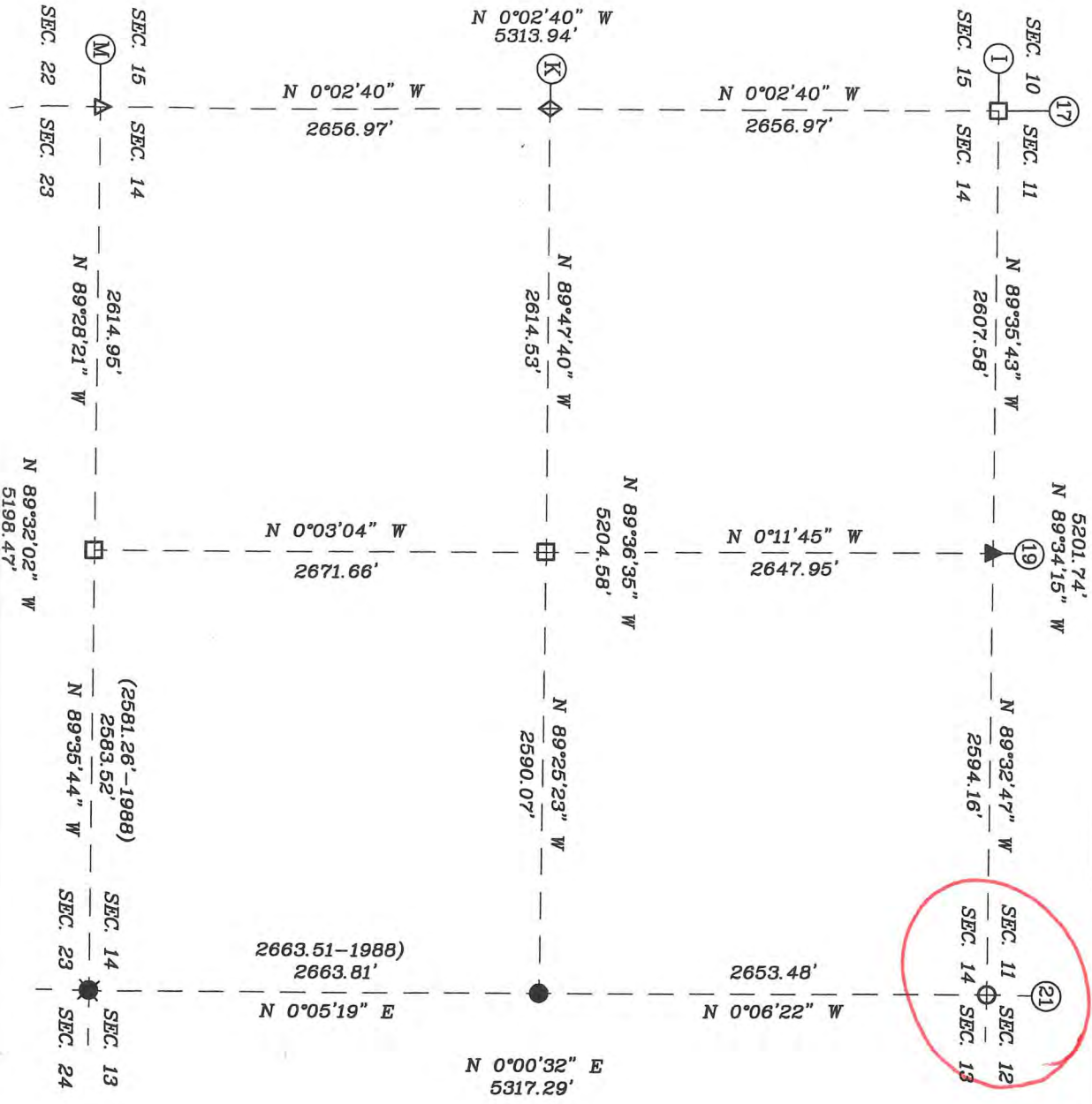
THIS REPORT OF SURVEY IS NOT COMPLETE WITHOUT THE SURVEY PLAT.

21-1

SECTION 14,
TOWNSHIP 4 SOUTH, RANGE 4 EAST,
WEBSTER TOWNSHIP,
HARRISON COUNTY, INDIANA

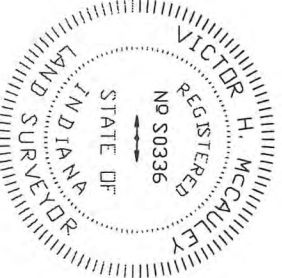


FOR RECORDING INFORMATION



SURVEYOR'S CERTIFICATE

I, VICTOR H. MCCAULEY, PROFESSIONAL LAND SURVEYOR, REGISTERED BY THE LAWS OF THE STATE OF INDIANA, HEREBY DECLARE THAT I HAVE RECOVERED, RESTORED AND PERPETUATED THE CORNERS SHOWN HEREBON IN SECTION 14, TOWNSHIP 4, SOUTH, RANGE 4 EAST, WEBSTER TOWNSHIP, HARRISON COUNTY, INDIANA, IN ACCORDANCE WITH IAC TITLE 865, THE RULES FOR SURVEYS OF PUBLIC LANDS AND THE STATUTES OF THE STATE OF INDIANA, ALL TO THE BEST OF MY KNOWLEDGE AND BELIEF.



LEGEND

- HISTORICAL STONE (SEE REPORT)
- EXISTING PIPE (SEE REPORT)
- EXISTING STEEL PIN W/CAP (SEE REPORT)
- STEEL PIN W/3/4" ALUM. DISC STAMPED TO DEPICT CORNER POSITION (SEE REPORT)
- EXISTING IMPLIMENT SHAFT (SEE REPORT)
- EXISTING RAILROAD SPIKE (SEE REPORT)
- MAGNETIC READING
- CALCULATED CORNER
- HARRISON COUNTY REFERENCE INDEX NUMBER

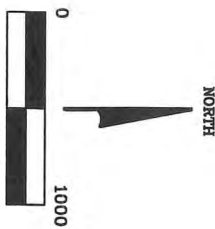
DECLARATION

I affirm under the penalties of perjury, that I have taken responsible care to reduce each Social Security number in this document, unless required by law.

DECLARANT
V. H. McCauley

Signature of Declarant

Printed Name of Declarant
VICTOR H. MCCAULEY



MCCAULEY & COMPANY, INC., P.S.C.
PROFESSIONAL LAND SURVEYORS
P.O. BOX 39
ELIZABETH, IN 47117-0039
TELEPHONE: 812-969-2186
mccauleypsc@frontier.com

FOR: HARRISON COUNTY SURVEYOR
HAROLD KINSTNER
245 ATWOOD STREET, SUITE 219
CORYDON, IN 47112

I-21

PLAT OF SURVEY
2012 HARRISON COUNTY PERPETUATION PROJECT

SITUATED IN SECTION 14, TOWNSHIP 4 SOUTH, RANGE 4 EAST, WEBSTER TOWNSHIP, HARRISON,
INDIANA.

SURVEYOR'S AFFIDAVIT

I, VICTOR H. MCCAULEY, PROFESSIONAL LAND SURVEYOR, AND REGISTERED BY THE LAWS OF THE STATE OF INDIANA, HEREBY CERTIFY THAT I HAVE SURVEYED AND SUBDIVIDED THE LANDS IN SECTION 14, TOWNSHIP 4 SOUTH, RANGE 4 EAST, WEBSTER TOWNSHIP, HARRISON COUNTY, INDIANA, IN ACCORDANCE WITH IAC TITLE 865 AND THE RULES FOR SURVEYS OF PUBLIC LANDS AND THE STATUTES OF THE STATE OF INDIANA, ALL TO THE BEST OF MY KNOWLEDGE AND BELIEF.

THE PLAT MAP AND SURVEY NOTES ARE AN ACCURATE REPRESENTATION OF THE CORNERS RECOVERED AND RESTORED DURING THIS SURVEY. LAST DATE OF FIELD WORK WAS NOVEMBER 22, 2012.

Vict H. M. Nov. 30, 2012
VICTOR H. MCCAULEY, INDIANA L\$# 0336 DATE

DECLARATION

I AFFIRM, UNDER THE PENALTIES FOR PERJURY, THAT I HAVE TAKEN RESPONSIBLE CARE TO REDACT, EACH SOCIAL SECURITY NUMBER IN THE DOCUMENT, UNLESS REQUIRED BY LAW.

DECLARANT VICTOR H. MCCAULEY
Vict H. M. PRINTED NAME OF DECLARANT
SIGNATURE OF DECLARANT

**PLAT OF SURVEY
2012 HARRISON COUNTY PERPETUATION PROJECT**

SITUATED IN SECTION 14, TOWNSHIP 4 SOUTH, RANGE 4 EAST, WEBSTER TOWNSHIP, HARRISON,
INDIANA.

REPORT OF SURVEY

THIS SURVEY WAS PERFORMED FOR HAROLD KLINSTIVER, HARRISON COUNTY SURVEYOR AS A PERPETUATION PROJECT FOR THE CORNERS IN SECTION 14, TOWNSHIP 4 SOUTH, RANGE 4 EAST, WEBSTER TOWNSHIP, HARRISON, INDIANA. THIS SURVEY IS A CONTINUATION OF SEVERAL PRIOR SURVEYS, IN THE SAME VICINITY, BY THIS FIRM.

THE ORIGINAL GOVERNMENT SURVEYS WERE CONDUCTED BY WILLIAM HARRIS, DEPUTY SURVEYOR IN FEBRUARY OF 1806. SUBSEQUENT SURVEYS WERE PERFORMED BY HARRISON COUNTY SURVEYORS AND PRIVATE SURVEYORS AS CITED BELOW. THE ORIGINAL AND SUBSEQUENT SURVEYOR NOTES ARE ON FILE IN THE HARRISON COUNTY SURVEYOR'S OFFICE.

PRIOR TO PERFORMING THIS SURVEY, I REVIEWED THE AVAILABLE ORIGINAL, SUBSEQUENT AND PRIVATE SURVEY NOTES. I RESEARCHED PERTINENT DEEDS AND ADJOINING DEEDS. I CONTACTED ADJOINING LAND OWNERS, CONSULTED WITH THE HARRISON COUNTY SURVEYOR AND OTHER LOCAL SURVEYORS FOR INFORMATION PERTAINING TO THE LOCATION OF CORNERS NEEDED TO PERFORM THIS SURVEY.

THE CORNERS RECOVERED, RESTORED AND PERPETUATED BY THIS SURVEY ARE MARKED IN THE LEGEND. THE BEARING BETWEEN MONUMENTS IS GRID NORTH AS DETERMINED BY GPS SURVEYS.

HORIZONTAL AND VERTICAL CONTROLS FOR THIS SURVEY ARE BASED ON STATIC AND RTK GPS METHODS AND COORDINATES WERE CONSTRAINED TO AN NGS OPUS SOLUTION POSITION, INDIANA STATE PLANE COORDINATE SYSTEM, EAST ZONE, 1983(2012) DATUM, FOR AN ON-SITE GPS BASE STATION. THIS IS A RETRACEMENT "RURAL CLASS SURVEY" AS DEFINED BY 865 IAC 1-12 SECTION 7, PARAGRAPH 3 (e-3) AND THE FIELD WORK IS WITHIN THE "RELATIVE POSITIONAL ACCURACY" SPECIFICATIONS CITED THEREIN.

CONVENTIONAL TERRESTRIAL TRAVERSES WERE USED TO DETERMINE CORNER POSITIONS THAT WERE DEEMED UNSUITABLE FOR GPS OBSERVATIONS. THE POSITION OF MONUMENTS WAS VERIFIED WITH REDUNDANT MEASUREMENTS. ALL TRAVERSES WERE EITHER CLOSED TRAVERSES OR WERE CONTROLLED BY GPS SURVEY METHODS

THIS SURVEY IS BASED ON THE INDIANA STATE PLANE COORDINATE SYSTEM, EAST ZONE, 1983 (2012) DATUM, U.S. SURVEY FOOT. THE DISTANCES SHOWN ARE SEA LEVEL GRID DISTANCES, BASED ON A COMBINED SCALE FACTOR OF 0.99995027. TO CONVERT SURVEY DISTANCES TO HORIZONTAL GROUND LEVEL DISTANCES, DIVIDE THE SURVEY DISTANCES BY THE SCALE FACTOR

EXISTING MONUMENTS RECOVERED FROM PRIOR SURVEYS

I-17 SECTION CORNER COMMON TO SECTIONS 10, 11, 14 & 14, T-4-S, R-4-E

RECOVERED LIMESTONE 0.4' BY 0.5' PROJECTING 0.2' AT FENCE CORNER, WITH YELLOW HCSS AND STEEL POST 0.3' SOUTH AT SW CORNER OF WOODS, PASTURE AND CULTIVATION TO WEST AND SOUTH. THE STONE WAS LEFT IN PLACE AS RECOVERED. THE STONE IS AT A VERY OLD AND PROMINENT CULTURAL INTERSECTION. THE POSITION OF THE CORNER IS SUPPORTED BY MEASUREMENTS TO ADJACENT MONUMENTS IN ALL CARDINAL DIRECTIONS AND BY VERY OLD AND DISTINCT CULTURAL FEATURES IN THE VICINITY.

CORNER ACCESSORIES ESTABLISHED:

W. OAK 23", N47°E, 9.34' TO MAG NAIL 0.6' UP IN NW SIDE
FENCE CORNER POST, N2°W, 0.7' TO MAG NAIL 0.6' UP IN E SIDE WITH HCSS

I-21 SECTION CORNER TO SECTIONS 11, 12 13 & 14, T-4-S, R-4-E

RECOVERED 1 3/8" PIPE PROJECTING 1' AT SW CORNER OF A CULTIVATED FIELD, WITH WOODS TO THE WEST AND SOUTH. THE MONUMENT WAS LEFT IN PLACE AS RECOVERED. THIS CORNER HAS A LONG LINAGE AND HAS BEEN USED BY LOCAL SURVEYORS AS THE SECTION CORNER FOR WELL OVER 15 YEARS. THE POSITION OF THE CORNER IS SUPPORTED BY MEASUREMENTS TO ADJACENT MONUMENTS IN ALL CARDINAL DIRECTIONS AND BY VERY OLD AND DISTINCT CULTURAL FEATURES IN THE VICINITY. CORNER ACCESSORIES ESTABLISHED:

CARSONITE POST, SE, 0.2'

SUGAR 14", N25°W, 9.08' TO A MAG NAIL 0.6' UP ON E SIDE W/OLD HCSS FACING EAST
HICKORY 12", S68°W, 26.64' TO A MAG NAIL 0.6' UP ON E SIDE
ASH 15", S72°E, 34.65' TO A MAG NAIL 0.6' UP ON NE SIDE

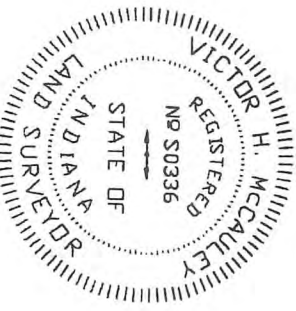
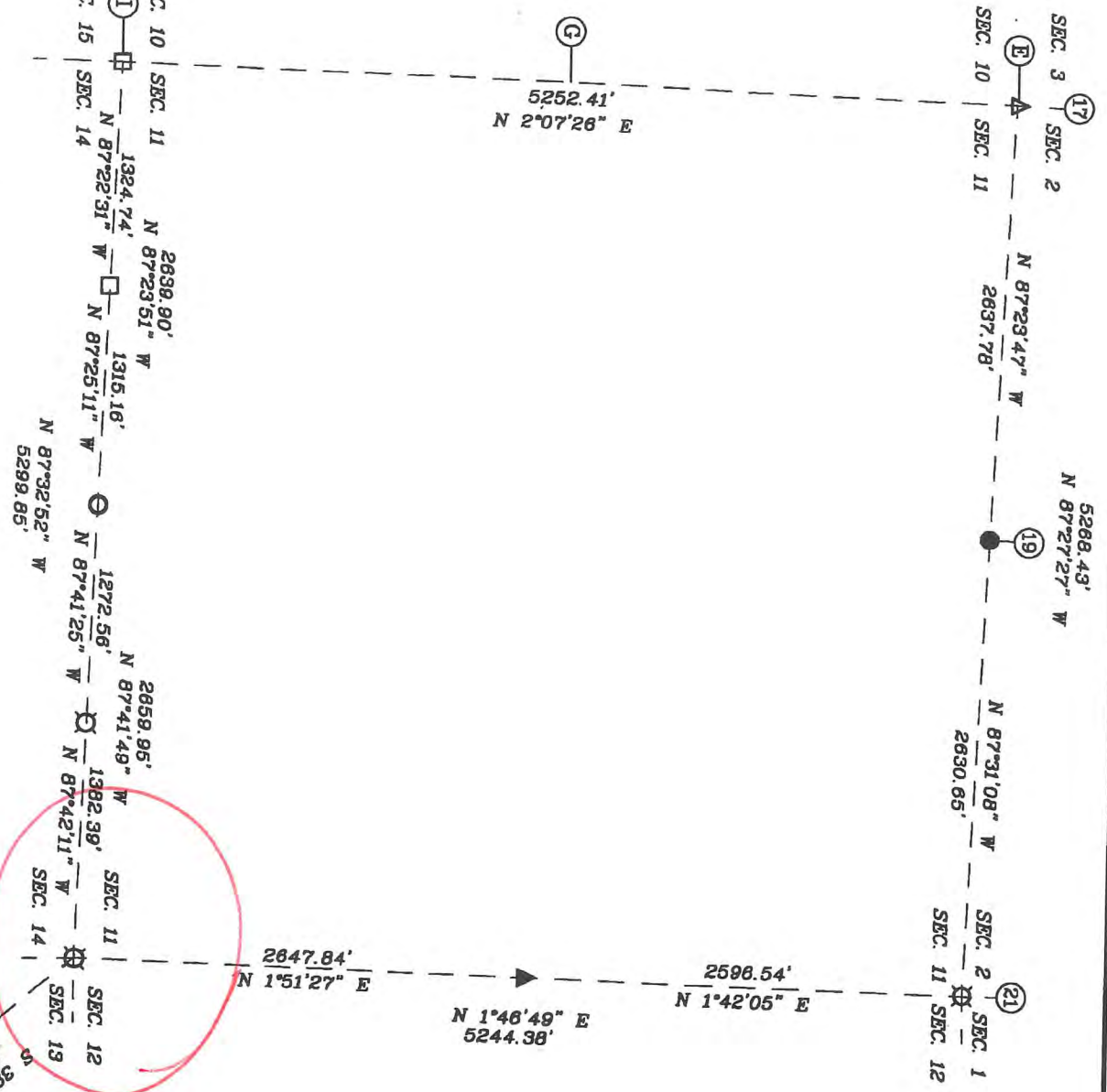
21-1

SECTION 11,
 TOWNSHIP 4 SOUTH, RANGE 3 EAST,
 HARRISON TOWNSHIP,
 HARRISON COUNTY, INDIANA

INST # 201206847
 BARBARA BEST
 HARRISON COUNTY RECORDER
 12/20/2012 3:14 PM
 PAGE 1 OF 4



FOR RECORDING INFORMATION



SURVEYOR'S CERTIFICATE

I, VICTOR H. MCCAULEY, PROFESSIONAL LAND SURVEYOR, REGISTERED BY THE LAWS OF THE STATE OF INDIANA, HEREBY DECLARE THAT I HAVE RECOVERED, RESTORED AND PERPETUATED THE CORNERS SHOWN HERON IN SECTION 11, TOWNSHIP 4, SOUTH, RANGE 3 EAST, HARRISON TOWNSHIP, HARRISON COUNTY, INDIANA IN ACCORDANCE WITH IAC TITLE 865, THE RULES FOR SURVEYS OF PUBLIC LANDS AND THE STATUTES OF THE STATE OF INDIANA, ALL TO THE BEST OF MY KNOWLEDGE AND BELIEF.

VICTOR H. MCCAULEY, INDIANA 15# S08396

DATE OF SURVEY: NOV. 30, 2012
 LAST DATE OF FIELD WORK: NOV. 22, 2012

DECLARATION

I, affirm under the penalties of perjury, that I have taken reasonable care to reduce, each Social Security number in this document, unless required by law.

Signature of Declarant: *V.H.M.*

VICTOR H. MCCAULEY

GRD NORTH PER INDIANA STATE PLANE COORDINATE SYSTEM, EAST ZONE, 1883 (2012) DATUM, PER G.P.S. OBSERVATION.



LEGEND

- HISTORICAL STONE (SEE REPORT)
- EXISTING PIPE (SEE REPORT)
- EXISTING STEEL PIN W/CAP (SEE REPORT)
- STEEL PIN W/3/4" ALUM. DISC STAMPED TO DEPICT CORNER POSITION (SEE REPORT)
- EXISTING STEEL PIN (SEE REPORT)
- EXISTING MAG NAIL (SEE REPORT)
- EXISTING RAILROAD SPIKE (SEE REPORT)
- USGS W-13
- HARRISON COUNTY REFERENCE INDEX NUMBER

THIS SURVEY IS BASED ON THE INDIANA STATE PLANE COORDINATE SYSTEM, EAST ZONE, 1883 (2012) ADJUSTMENT U.S. SURVEY FOOT. THE DISTANCES SHOWN ARE SEA LEVEL DISTANCES, BASED ON COMBINED SCALE FACTOR OF 0.999964222. TO CONVERT THE SURVEY DISTANCES TO HORIZONTAL GROUND LEVEL, DISTANCES DIVIDES THE SURVEY DISTANCES BY THE SCALE FACTOR.

FOR A MORE COMPLETE DESCRIPTION OF EACH CORNER, SEE THE LAND CORNER RECORD CARD ON FILE WITH THE HARRISON COUNTY SURVEYOR. THIS SURVEY IS NOT COMPLETE WITHOUT THE SURVEY PLAT AND SURVEYOR'S REPORT.

MCCAULEY & COMPANY, INC., P.S.C.
 PROFESSIONAL LAND SURVEYORS
 P.O. BOX 39
 ELIZABETH, IN 47117-0039
 TELEPHONE 812-969-2188
 mccauleysec@frontier.com

FOR: HARRISON COUNTY SURVEYOR
 HAROLD KLINSTIVER
 245 ATWOOD STREET, SUITE 219
 CORYDON, IN 47112

I-21

PLAT OF SURVEY
2012 HARRISON COUNTY PERPETUATION PROJECT

SITUATED IN SECTION 11, TOWNSHIP 4 SOUTH, RANGE 3 EAST, HARRISON TOWNSHIP, HARRISON, INDIANA.

REPORT OF SURVEY

THIS SURVEY WAS PERFORMED FOR HAROLD KLINSTIVER, HARRISON COUNTY SURVEYOR AS A PERPETUATION PROJECT FOR THE CORNERS IN SECTION 11, TOWNSHIP 4 SOUTH, RANGE 3 EAST, HARRISON TOWNSHIP, HARRISON, INDIANA. THIS SURVEY IS A CONTINUATION OF SEVERAL PRIOR SURVEYS, IN THE SAME VICINITY, BY THIS FIRM.

THE ORIGINAL GOVERNMENT SURVEYS WERE CONDUCTED BY JOSEPH H. SARWELL, DEPUTY SURVEYOR IN JANUARY OF 1806. SUBSEQUENT SURVEYS WERE PERFORMED BY HARRISON COUNTY SURVEYORS AND PRIVATE SURVEYORS AS CITED BELOW. THE ORIGINAL AND SUBSEQUENT SURVEYOR NOTES ARE ON FILE IN THE HARRISON COUNTY SURVEYOR'S OFFICE.

PRIOR TO PERFORMING THIS SURVEY, I REVIEWED THE AVAILABLE ORIGINAL, SUBSEQUENT AND PRIVATE SURVEY NOTES. I RESEARCHED PERTINENT DEEDS AND ADJOINING DEEDS. I CONTACTED ADJOINING LAND OWNERS, CONSULTED WITH THE HARRISON COUNTY SURVEYOR AND OTHER LOCAL SURVEYORS FOR INFORMATION PERTAINING TO THE LOCATION OF CORNERS NEEDED TO PERFORM THIS SURVEY.

THE CORNERS RECOVERED, RESTORED AND PERPETUATED BY THIS SURVEY ARE MARKED IN THE LEGEND. THE BEARING BETWEEN MONUMENTS IS GRID NORTH AS DETERMINED BY GPS SURVEYS.

HORIZONTAL AND VERTICAL CONTROLS FOR THIS SURVEY ARE BASED ON STATIC AND RTK GPS METHODS AND COORDINATES WERE CONSTRAINED TO AN NGS OPUS SOLUTION POSITION, INDIANA STATE PLANE COORDINATE SYSTEM, EAST ZONE, 1983 (2012) DATUM, FOR AN ON-SITE GPS BASE STATION. THIS IS A RETRACEMENT "RURAL CLASS SURVEY" AS DEFINED BY 865 IAC 1-12 SECTION 7, PARAGRAPH 3 (e-3) AND THE FIELD WORK IS WITHIN THE "RELATIVE POSITIONAL ACCURACY" SPECIFICATIONS CITED THEREIN.

CONVENTIONAL TERRESTRIAL TRAVERSES WERE USED TO DETERMINE CORNER POSITIONS THAT WERE DEEMED UNSUITABLE FOR GPS OBSERVATIONS. THE POSITION OF MONUMENTS WAS VERIFIED WITH REDUNDANT MEASUREMENTS. ALL TRAVERSES WERE EITHER CLOSED TRAVERSES OR WERE CONTROLLED BY GPS SURVEY METHODS

THIS SURVEY IS BASED ON THE INDIANA STATE PLANE COORDINATE SYSTEM, EAST ZONE, 1983 (2012) DATUM, U.S. SURVEY FOOT. THE DISTANCES SHOWN ARE SEA LEVEL GRID DISTANCES, BASED ON A COMBINED SCALE FACTOR OF 0.99996222. TO CONVERT SURVEY DISTANCES TO HORIZONTAL GROUND LEVEL DISTANCES, DIVIDE THE SURVEY DISTANCES BY THE SCALE FACTOR

EXISTING MONUMENTS RECOVERED

E-17 SECTION CORNER COMMON TO SECTIONS 2, 3, 10 & 11, T-4-S, R-3-E

RECOVERED MAG HUB SET IN CONCRETE PLUG IN THE INTERSECTION OF STEAM ENGINE ROAD AND MATHESS ROAD. THE MONUMENT IS AT A VERY OLD AND PROMINENT CULTURAL INTERSECTION. THE POSITION OF THE CORNER IS SUPPORTED BY MEASUREMENTS TO ADJACENT MONUMENTS IN ALL CARDINAL DIRECTIONS AND BY VERY OLD AND DISTINCT CULTURAL FEATURES IN THE VICINITY. CORNER ACCESSORIES ESTABLISHED:

HACKBERRY 11", S66°E, 22.10' TO A MAG NAIL 1.1' UP ON SW SIDE
TEL PED, N78°W, 66.43'
SUGAR 31", N41°W, 32.7'
STOP SIGN POST, N30°W, 18.69' W/HCSS

E-21 SECTION CORNER TO SECTIONS 1, 2, 11 & 12, T-4-S, R-3-E

RECOVERED #4 SPC-LS131 ON THE NORTH SIDE OF A FENCE CORNER POST. THE PIN PROJECTS 0.2' AND IS AT THE CORNER BETWEEN FIELDS. THE MONUMENT WAS LEFT IN PLACE AS RECOVERED. THIS CORNER HAS A LONG LINAGE AND HAS BEEN USED BY LOCAL SURVEYORS AS THE SECTION CORNER. THE POSITION OF THE CORNER IS SUPPORTED BY MEASUREMENTS TO ADJACENT MONUMENTS IN ALL CARDINAL DIRECTIONS AND BY VERY OLD AND DISTINCT CULTURAL FEATURES IN THE VICINITY. CORNER ACCESSORIES ESTABLISHED:

CARSONITE POST, WEST, 0.7'
STONE, S2° 28' 45" W, 88.28'
ELM 12", N58°E, 1.28' TO A MAG NAIL 0.6' UP ON NW SIDE
R. OAK 31", S87°W, 17.15' TO A MAG NAIL 1.0' UP ON N SIDE
FENCE POST, SOUTH, 0.4' W/HCSS

PLAT OF SURVEY
2012 HARRISON COUNTY PERPETUATION PROJECT

SITUATED IN SECTION 11, TOWNSHIP 4 SOUTH, RANGE 3 EAST, HARRISON TOWNSHIP, HARRISON,
INDIANA.

EXISTING MONUMENTS RECOVERED

G-21 QUARTER CORNER TO SECTIONS 11 & 12, T-4-S, R-3-E

RECOVERED RAILROAD SPIKE 0.2' DEEP IN SHILO ROAD AT CRUSHED STONE DRIVEWAY TO THE NORTH. SET A MAG NAIL IN A CONCRETE PLUG OVER THE MONUMENT. THE MONUMENT IS AT A VERY OLD AND PROMINENT CULTURAL INTERSECTION. THE POSITION OF THE CORNER IS SUPPORTED BY MEASUREMENTS TO ADJACENT MONUMENTS IN ALL CARDINAL DIRECTIONS AND BY VERY OLD AND DISTINCT CULTURAL FEATURES IN THE VICINITY. SEE SURVEYS OF RECORD IN SURVEY BOOK 4, PAGE 697 AND PLAT BOOK 4, PAGE 1. CORNER ACCESSORIES ESTABLISHED:

AILANTHUS TWIN 9", N2°E, 15.68' TO A MAG NAIL 0.6' UP ON W SIDE W/HCSS
OLD POST, N63°W, 30.91' TO A MAG NAIL 0.6' UP ON NE SIDE
AUGER MAILBOX POST, S30°W, 17.0'

I-17 SECTION CORNER TO SECTIONS 10, 11, 14 & 15

RECOVERED LIMESTONE 1.1', N32°W FROM FENCE CORNER POST. SET CARSONITE POST 0.5' WEST AND PLACED A CAIRN OF ROCKS AROUND THE MONUMENT. THE MONUMENT WAS LEFT IN PLACE AS RECOVERED. THIS CORNER HAS A LONG LINAGE AND HAS BEEN USED BY LOCAL SURVEYORS AS THE SECTION CORNER FOR WELL OVER 15 YEARS. THE POSITION OF THE CORNER IS SUPPORTED BY MEASUREMENTS TO ADJACENT MONUMENTS IN ALL CARDINAL DIRECTIONS AND BY VERY OLD AND DISTINCT CULTURAL FEATURES IN THE VICINITY. SEE SURVEY RECORDED IN INSTRUMENT #200706479. CORNER ACCESSORIES ESTABLISHED:

HICKORY 7", N9°W, 10.27' TO A MAG NAIL 1.0' UP ON W SIDE
CHERRY 16", S45°E, 2.15' TO A MAG NAIL 0.6' UP IN NE SIDE
HACKBERRY 5", S49°W, 9.40' TO A MAG NAIL 1.0' UP IN NW SIDE

I-19 QUARTER SECTION CORNER TO SECTIONS 11 & 14, T-4-S, R-3-E

RECOVERED STEEL PIN WITH CAP IN CULTIVATED FIELD. THE PIN IS AT A VERY OLD AND PROMINENT CULTURAL INTERSECTION. THE POSITION OF THE CORNER IS SUPPORTED BY MEASUREMENTS TO ADJACENT MONUMENTS IN ALL CARDINAL DIRECTIONS AND BY VERY OLD AND DISTINCT CULTURAL FEATURES IN THE VICINITY. SEE SURVEY RECORDED IN INSTRUMENT #200706479. SET A CARSONITE POST ON S SIDE OF MONUMENT. NO CORNER ACCESSORIES WERE AVAILABLE IN THE VICINITY.

I-21 SECTION CORNER TO SECTIONS 11, 12, 13 & 14, T-4-S, R-3-E

RECOVERED #5 STEEL PIN WITH CAP 1.5' DEEP IN A CULTIVATED FIELD AT A VERY OLD AND PROMINENT CULTURAL FEATURE. THE POSITION OF THE CORNER IS SUPPORTED BY MEASUREMENTS TO ADJACENT MONUMENTS IN ALL CARDINAL DIRECTIONS AND BY VERY OLD AND DISTINCT CULTURAL FEATURES IN THE VICINITY. NO CORNER ACCESSORIES WERE AVAILABLE IN THE VICINITY.

USGS MONUMENT W-13, 1937

USGS MONUMENT ON THE WEST SIDE OF OLD HIGHWAY 135 NEAR THE SE CORNER OF JORDAN CEMETERY.

FOR ADDITIONAL CORNER INFORMATION, SEE THE INDIVIDUAL CORNER RECORDS IN THE HARRISON COUNTY SURVEYORS OFFICE.

THIS REPORT OF SURVEY IS NOT COMPLETE WITHOUT THE SURVEY PLAT.

Job #20077-111

3

I-291

PLAT OF SURVEY
2012 HARRISON COUNTY PERPETUATION PROJECT

SITUATED IN SECTION 11, TOWNSHIP 4 SOUTH, RANGE 3 EAST, HARRISON TOWNSHIP, HARRISON,
INDIANA.

SURVEYOR'S AFFIDAVIT

I, VICTOR H. McCAULEY, PROFESSIONAL LAND SURVEYOR, AND REGISTERED BY THE LAWS OF THE
STATE OF INDIANA, HEREBY CERTIFY THAT I HAVE SURVEYED THE LANDS IN SECTION 11, TOWNSHIP 4 SOUTH,
RANGE 3 EAST, HARRISON TOWNSHIP, HARRISON COUNTY, INDIANA, IN ACCORDANCE WITH IAC TITLE 865 AND
THE RULES FOR SURVEYS OF PUBLIC LANDS AND THE STATUTES OF THE STATE OF INDIANA, ALL TO THE BEST
OF MY KNOWLEDGE AND BELIEF.

THE PLAT MAP AND SURVEY NOTES ARE AN ACCURATE REPRESENTATION OF THE CORNERS
RECOVERED AND RESTORED DURING THIS SURVEY. LAST DATE OF FIELD WORK WAS NOVEMBER 22, 2012.

Vict H. M Nov. 30, 2012
VICTOR H. McCAULEY, INDIANA LS# 0336 DATE

DECLARATION

I AFFIRM, UNDER THE PENALTIES FOR PERJURY, THAT I HAVE TAKEN RESPONSIBLE CARE
TO REDACT, EACH SOCIAL SECURITY NUMBER IN THE DOCUMENT, UNLESS REQUIRED BY
LAW.

DECLARANT VICTOR H. McCAULEY
Vict H. M PRINTED NAME OF DECLARANT
SIGNATURE OF DECLARANT


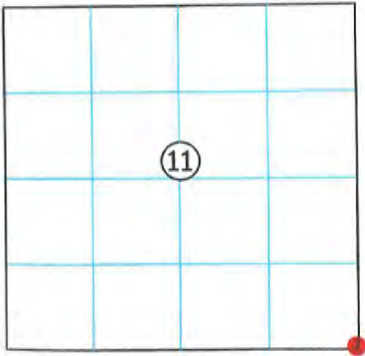
*Vict
1-8-13*

Harrison Co. No. I-21

21-I

T 4 S, R 3 E 2nd Prin. Mer. County Harrison State Indiana

Section Corner common to Sections 11, 12, 13 and 14

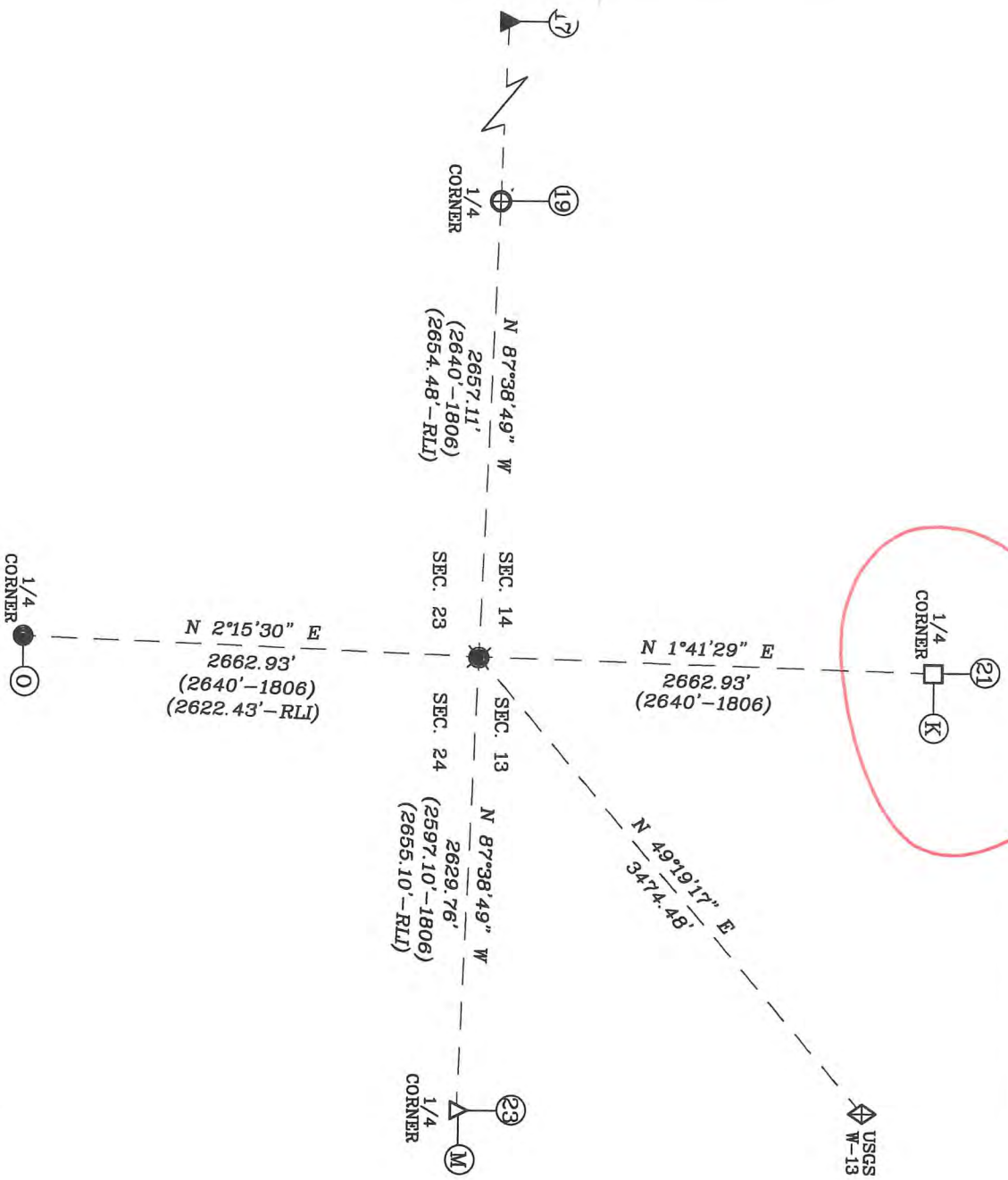
EXISTING SURVEYS	
No Original Government Survey Evidence Recovered	Picture
See survey of record in Instrument Number 200706479 of the Harrison County, Indiana records.	
Subsequent Corner Restoration	Evidence of Subsequent Corner Restoration Found
Year surveyed _____ By _____ Where filed or recorded _____ Monument _____ <small>(Original, concrete post, iron rod, etc...)</small>	Year of search <u>2012</u> By <u>VHM</u> Recovered #5 steel pin with cap 1.5' deep in a cultivated field.
Bearing Trees, Reference Objects	
Species _____	
Diameter _____	
Bearing _____	
Distance _____	
	<p>Perpetuation Record</p> <p>Monument and accessories established. Include brief description of area. <u>The monument was left in place as recovered. The position of the corner is supported by measurements to adjacent monuments in all cardinal directions and by very old and distinct cultural features in the vicinity. No corner accessories established.</u></p> <hr/> <p>N: 1062336.03 { USGS E: 192551.02 { W-13</p> <hr/> <p>N: 1065406.32 { Corner E: 190064.63 {</p>
Signature <u>Vick H. Meyer</u>	
Date: <u>November 30, 2012</u>	
	<u>Harold K. Pennington</u>

21-K

[Red scribble]

SECTIONS 13, 14, 23 & 24,
TOWNSHIP 4 SOUTH, RANGE 3 EAST,
HARRISON TOWNSHIP,
HARRISON COUNTY, INDIANA

FOR RECORDING INFORMATION



SURVEYOR'S CERTIFICATE

I, VICTOR H. MCCAULEY, PROFESSIONAL LAND SURVEYOR, REGISTERED BY THE LAWS OF THE STATE OF INDIANA, HEREBY DECLARE THAT I HAVE RESTORED AND PERPETUATED THE SECTION CORNER COMMON TO SECTIONS 13, 14, 23 & 24, TOWNSHIP 4 SOUTH, RANGE 3 EAST, HARRISON TOWNSHIP, HARRISON COUNTY, INDIANA IN ACCORDANCE WITH IAC TITLE 865, THE RULES FOR SURVEYS OF PUBLIC LANDS AND THE STATUTES OF THE STATE OF INDIANA, ALL TO THE BEST OF MY KNOWLEDGE AND BELIEF.

VICTOR H. MCCAULEY, INDIANA LS# S0336

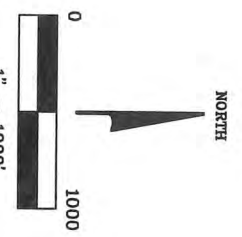
DATE OF SURVEY: DEC. 26, 2012
LAST DATE OF FIELD WORK: DEC. 13, 2012

DECLARATION

I affirm under the penalties of perjury that I have taken responsible care to redact each Social Security number in this document, unless required by law.

DECLARANT
Signature of Declarant: *V. H. M.*
VICTOR H. MCCAULEY

Printed Name of Declarant



GRD NORTH PER INDIANA STATE PLANE COORDINATE SYSTEM, EAST ZONE, 1883 (2012) DATUM, PER G.P.S. OBSERVATION.

LEGEND

- HISTORICAL STONE (SEE REPORT)
- ⊕ EXISTING MAG HUB IN CONC. PLUG (SEE REPORT)
- REFERENCE MONUMENT SET STEEL PIN W/3/4" ALUM. DISC STAMPED TO DEPICT CORNER POSITION (SEE REPORT)
- EXISTING STEEL PIN (SEE REPORT)
- ▲ EXISTING MAG NAIL (SEE REPORT)
- ▲ EXISTING RAILROAD SPIKE (SEE REPORT)
- 1806 1806 ORIGINAL SURVEY MEASUREMENTS
- RLI ROBERT L. ISGRIGG I.S. 365
- ⊕ USGS W-13 N: 1062336.03 E: 192551.02
- (N) HARRISON COUNTY REFERENCE INDEX NUMBER

THIS SURVEY IS BASED ON THE INDIANA STATE PLANE COORDINATE SYSTEM, EAST ZONE, 1883 (2012) ADJUSTMENT U.S. SURVEY FOOT. THE DISTANCES SHOWN ARE SEA GRD DISTANCES. BASED ON COMBINED SCALE FACTOR OF 0.99986222. TO CONVERT THE SURVEY DISTANCES TO HORIZONTAL GROUND LEVEL DISTANCES DIVIDES THE SURVEY DISTANCES BY THE SCALE FACTOR.

FOR A MORE COMPLETE DESCRIPTION OF EACH CORNER, SEE THE LAND CORNER RECORD CARD ON FILE WITH THE HARRISON COUNTY SURVEYOR. THIS SURVEY IS NOT COMPLETE WITHOUT THE SURVEY PLAT AND SURVEYOR'S REPORT.

MCCAULEY & COMPANY, P.S.C.
PROFESSIONAL LAND SURVEYORS
P.O. BOX 39
ELIZABETH, IN 47117-0039
TELEPHONE: 812-969-2186
mccauleypsco@frontier.com

FOR: HARRISON COUNTY SURVEYOR
HAROLD KLINSTIVER
245 ATWOOD STREET, SUITE 219
CORDON, IN 47112

PLAT OF SURVEY
2012 HARRISON COUNTY PERPETUATION PROJECT

SITUATED IN SECTIONS 13, 14, 23 & 24, TOWNSHIP 4 SOUTH, RANGE 3 EAST, HARRISON TOWNSHIP,
HARRISON COUNTY, INDIANA.

REPORT OF SURVEY

THIS SURVEY WAS PERFORMED FOR HAROLD KLINTSTVER, HARRISON COUNTY SURVEYOR AS A PERPETUATION PROJECT FOR THE SECTION CORNER TO SECTIONS 13, 14, 23 & 24, TOWNSHIP 4 SOUTH, RANGE 3 EAST, HARRISON TOWNSHIP, HARRISON COUNTY, INDIANA. THIS SURVEY IS A CONTINUATION OF SEVERAL PRIOR SURVEYS, IN THE SAME VICINITY, BY THIS FIRM.

THE ORIGINAL GOVERNMENT SURVEYS WERE CONDUCTED BY JOSEPH H. SARWELL, DEPUTY SURVEYOR IN JANUARY OF 1806. SUBSEQUENT SURVEYS WERE PERFORMED BY HARRISON COUNTY SURVEYORS AND PRIVATE SURVEYORS AS CITED BELOW. THE ORIGINAL AND SUBSEQUENT SURVEY NOTES ARE ON FILE IN THE HARRISON COUNTY SURVEYOR'S OFFICE.

PRIOR TO PERFORMING THIS SURVEY, I REVIEWED THE AVAILABLE ORIGINAL, SUBSEQUENT AND PRIVATE SURVEY NOTES. I RESEARCHED PERTINENT DEEDS AND ADJOINING DEEDS. I CONTACTED ADJOINING LAND OWNERS, CONSULTED WITH THE HARRISON COUNTY SURVEYOR AND OTHER LOCAL SURVEYORS FOR INFORMATION PERTAINING TO THE LOCATION OF CORNERS NEEDED TO PERFORM THIS SURVEY.

THE CORNER RECOVERED AND PERPETUATED BY THIS SURVEY IS MARKED IN THE LEGEND. THE BEARING BETWEEN MONUMENTS IS GRID NORTH AS DETERMINED BY GPS SURVEYS.

HORIZONTAL AND VERTICAL CONTROLS FOR THIS SURVEY ARE BASED ON STATIC AND RTK GPS METHODS AND COORDINATES WERE CONSTRAINED TO AN NGS OPUS SOLUTION POSITION, INDIANA STATE PLANE COORDINATE SYSTEM, EAST ZONE, 1983 (2012) DATUM, FOR AN ON-SITE GPS BASE STATION. THIS IS A RETRACEMENT "RURAL CLASS SURVEY" AS DEFINED BY 865 IAC 1-12 SECTION 7, PARAGRAPH 3 (e-3) AND THE FIELD WORK IS WITHIN THE "RELATIVE POSITIONAL ACCURACY" SPECIFICATIONS CITED THEREIN.

CONVENTIONAL TERRESTRIAL TRAVERSES WERE USED TO DETERMINE CORNER POSITIONS THAT WERE DEEMED UNSUITABLE FOR GPS OBSERVATIONS. THE POSITION OF MONUMENTS WAS VERIFIED WITH REDUNDANT MEASUREMENTS. ALL TRAVERSES WERE EITHER CLOSED TRAVERSES OR WERE CONTROLLED BY GPS SURVEY METHODS

THIS SURVEY IS BASED ON THE INDIANA STATE PLANE COORDINATE SYSTEM, EAST ZONE, 1983 (2012) DATUM, U.S. SURVEY FOOT. THE DISTANCES SHOWN ARE SEA LEVEL GRID DISTANCES, BASED ON A COMBINED SCALE FACTOR OF 0.99996222. TO CONVERT SURVEY DISTANCES TO HORIZONTAL GROUND LEVEL DISTANCES, DIVIDE THE SURVEY DISTANCES BY THE SCALE FACTOR

EXISTING MONUMENTS RECOVERED DURING PRIOR SURVEYS

K-21 QUARTER CORNER TO SECTIONS 13 & 14, T-4-S, R-3-E

RECOVERED FIELD STONE ORIENTED IN CARDINAL DIRECTIONS AND IN E-W FENCE LINE. THE STONE IS AT A VERY OLD AND PROMINENT CULTURAL INTERSECTION. THE POSITION OF THE CORNER IS SUPPORTED BY MEASUREMENTS TO ADJACENT MONUMENTS IN ALL CARDINAL DIRECTIONS AND BY VERY OLD AND DISTINCT CULTURAL FEATURES IN THE VICINITY. SEE SURVEY RECORDED AS INSTRUMENT #201103259. CORNER ACCESSORIES ESTABLISHED IN 2011:
SET CARSONITE POST ON THE SOUTH FACE OF THE STONE
SUGAR 30", S75°E, 7.7' W/HARRISON COUNTY SURVEYOR'S SIGN

M-17 CORNER TO SECTIONS 14, 15, 22 & 23, T-4-S, R-3-E

RECOVERED MAGNETIC READINGS IN FAIRVIEW CHURCH ROAD PER PRIOR SURVEYS. SEE SURVEY BOOK 5, PAGE 63 AND INSTRUMENTS #200503223 & 201103259.

M-19 QUARTER CORNER TO SECTIONS 14 & 23, T-4-S, R-3-E

RECOVERED MAG HUB IN A CONCRETE PLUG IN FAIRVIEW CHURCH ROAD AS PERPETUATED DURING PRIOR SURVEYS. SEE SURVEYS RECORDED IN SURVEY BOOK 4, PAGE 121, SURVEY BOOK 5, PAGE 63 AND INSTRUMENT #201103259. THE MONUMENT IS AT A VERY OLD AND PROMINENT CULTURAL INTERSECTION. THE POSITION OF THE CORNER IS SUPPORTED BY MEASUREMENTS TO ADJACENT MONUMENTS IN ALL CARDINAL DIRECTIONS AND BY VERY OLD AND DISTINCT CULTURAL FEATURES IN THE VICINITY.

M-21 QUARTER CORNER TO SECTIONS 13 & 24, T-4-S, R-3-E

RECOVERED MAG NAIL 0.3' DEEP IN UNION CHAPEL ROAD. THE MONUMENT IS AT A VERY OLD AND PROMINENT CULTURAL INTERSECTION. THE POSITION OF THE CORNER IS SUPPORTED BY MEASUREMENTS TO ADJACENT MONUMENTS IN ALL CARDINAL DIRECTIONS AND BY VERY OLD AND DISTINCT CULTURAL FEATURES IN THE VICINITY

PLAT OF SURVEY
2012 HARRISON COUNTY PERPETUATION PROJECT

A-21

SITUATED IN SECTIONS 13, 14, 23 & 24, TOWNSHIP 4 SOUTH, RANGE 3 EAST, HARRISON TOWNSHIP,
HARRISON COUNTY, INDIANA.

EXISTING MONUMENTS RECOVERED DURING PRIOR SURVEYS

0-21 QUARTER CORNER TO SECTIONS 23 & 24, T-4-S, R-3-E

RECOVERED #4 STEEL PIN DURING 1998 SURVEYS AS DEPICTED ON 1992 SURVEY OF RECORD IN SURVEY BOOK 1, PAGE 318 (ALSO SEE SURVEY BOOK 3, PAGE 644 & SURVEY BOOK 4, PAGE 310). THE MONUMENT IS AT A VERY OLD AND PROMINENT CULTURAL INTERSECTION. THE POSITION OF THE CORNER IS SUPPORTED BY MEASUREMENTS TO ADJACENT MONUMENTS IN ALL CARDINAL DIRECTIONS AND BY VERY OLD AND DISTINCT CULTURAL FEATURES IN THE VICINITY. SEE SURVEYS OF RECORD IN THE HARRISON COUNTY RECORDS.

USGS MONUMENT W-13, 1937

USGS MONUMENT ON THE WEST SIDE OF OLD HIGHWAY 135 NEAR THE SE CORNER OF JORDAN CEMETERY.

SECTION CORNER RESTORED

M-21 CORNER TO SECTIONS 13, 14, 23 & 24, T-4-S, R-3-E

RESTORED CORNER POSITION ON THE EAST-WEST SECTION LINE AT NEAR PROPORTIONAL MEASUREMENTS IN ALL CARDINAL DIRECTIONS. THE POSITION OF THE CORNER IS SUPPORTED BY MEASUREMENTS TO ADJACENT MONUMENTS IN ALL CARDINAL DIRECTIONS AND BY VERY OLD AND DISTINCT CULTURAL FEATURES IN THE VICINITY. THE CORNER POSITION FELL IN A CULTIVATED FIELD AND PRIOR TO RESTORING THE CORNER I HAD SEVERAL CONVERSATIONS WITH MR. ROBERT MATHEES AND MR. ROBERT WELMAN CONCERNING THE LOCATION OF THIS CORNER. NEITHER COULD REMEMBER A CORNER IN THE FIELD AND BOTH MEN HAVE ACCEPTED THE OLD NORTH-SOUTH FENCE LINE AS THE SECTION LINE. THERE ARE ALSO SEVERAL GENERATIONS OF SURVEYS BY ROBERT LEE ISGRIGG THAT DEPICTED THIS CORNER AS BEING A FRAGMENTED STONE. AS CITED ABOVE, MR. MATHEES HAS FARMED AND CULTIVATED THIS VICINITY FOR OVER FIFTY (50) YEARS AND COULD NOT RECALL A STONE EVERY BEING THERE. SEE COMMENTS IN THE NARRATIVE BELOW. A WITNESS MONUMENT WAS SET 44.5' WEST ALONG THE SECTION LINE FROM THE CORNER. THE WITNESS MONUMENT IS A #5 BY 30" STEEL PIN WITH A 3/4" ALUMINUM DISK STAMPED TO DEPICT THE CORNER POSITION. ACCESSORIES ESTABLISHED FOR THE WITNESS MONUMENT:
UTILITY POLE, NORTH, 90.64' TO A MAG NAIL 0.6' UP ON THE EAST SIDE
UTILITY POLE W/TRANSFORMER, N39°W, 102.87' TO A MAG NAIL 0.6' UP ON THE NORTHEAST SIDE
UTILITY POLE, S2°W, 65.45' TO A MAG NAIL UP 0.6' ON THE EAST SIDE
SUGAR 22", S84°W, 62.94'
"T" FENCE POST W/HARRISON COUNTY SURVEY SIGN, S38°W, 4.0'
RLI-SPC, N89°7'31"W, 715.65'
RLI-SPC, S85°01'30"E, 706.57'

NARRATIVE

I HAVE VISITED THIS CORNER POSITION SEVERAL TIMES IN THE PAST FIFTEEN (15) YEARS AND SPOKE WITH MR. ROBERT MATHEES DURING SEVERAL PRIOR SURVEYS PERFORMED BY ME IN THIS VICINITY.

AS STATED ABOVE SURVEYOR ISGRIGG CALLS FOR A FRAGMENTED STONE FOR THIS CORNER. I MADE A THROUGH AND EXHAUSTIVE SEARCH FOR THE FRAGMENTED STONE WITH NO LUCK. HOWEVER I DID RECOVER EIGHT (8) MONUMENTS CITED BY SURVEYOR ISGRIGG AND ATTEMPTED TO RECONCILE THE SURVEY PLAT AND DEED DIMENSIONS WITH THE DISTANCES MEASURED BETWEEN THE RECOVERED MONUMENTS TO NO AVAIL. IN MY OPINION THE ISGRIGG SURVEY CONTAINS SEVERAL DIMENSIONING BLUNDERS. ALSO, THE ISGRIGG SURVEY PLAT CONTAINS SEVERAL DISCREPANCIES WHERE CALLS ARE MADE FOR "NO MONUMENT FOUND" ON CORNERS M-19 & O-21. I HAD VISITED BOTH CORNERS PRIOR TO THE 2000 ISGRIGG SURVEY AND RECOVERED MONUMENTS PER THE COUNTY RECORDS ON BOTH CORNERS AND FURTHERMORE, SURVEYOR ISGRIGG CITES A STONE ON THE SE CORNER OF SECTION 23, I VISITED THAT CORNER IN SEPTEMBER AND OCTOBER OF 1998 AND NO SURVEY STONE EXISTED DURING MY VISITS AND PRIMAVERA VISITED THE CORNER IN 2002 AND DID NOT RECOVER A STONE EITHER. THE ISGRIGG SURVEY PLAT ALSO DEPICTS SEVERAL OTHER EXISTING CORNER MONUMENTS THAT WERE NOT HONORED. THESE EXISTING MONUMENTS ARE NEARLY IN COINCIDENCE WITH THE CORNER I RESTORED, ELIMINATING THE OVERLAPS AND GAPS CITED BY SURVEYOR ISGRIGG.

THEFORE I RESTORED THE CORNER POSITION PER "THE CHIEF JUSTICE COOLEY DOCTRINE" BY NOT DISRUPTION THE FREE HOLDINGS OR PERPETUATING THE DISCREPANCIES IN THE ISGRIGG SURVEY.

FOR ADDITIONAL CORNER INFORMATION, SEE THE INDIVIDUAL CORNER RECORDS IN THE HARRISON COUNTY SURVEYORS OFFICE.

THIS REPORT OF SURVEY IS NOT COMPLETE WITHOUT THE SURVEY PLAT.

K-21

PLAT OF SURVEY
2012 HARRISON COUNTY PERPETUATION PROJECT

SITUATED IN SECTIONS 13, 14, 23 & 24, TOWNSHIP 4 SOUTH, RANGE 3 EAST, HARRISON TOWNSHIP,
HARRISON COUNTY, INDIANA.

SURVEYOR'S AFFIDAVIT

I, VICTOR H. McCAULEY, PROFESSIONAL LAND SURVEYOR, AND REGISTERED BY THE LAWS OF THE STATE OF INDIANA, HEREBY CERTIFY THAT I HAVE SURVEYED THE LANDS AS DEPICTED IN SECTIONS 13, 14, 23 & 24, TOWNSHIP 4 SOUTH, RANGE 3 EAST, HARRISON TOWNSHIP, HARRISON COUNTY, INDIANA, IN ACCORDANCE WITH IAC TITLE 865 AND THE RULES FOR SURVEYS OF PUBLIC LANDS AND THE STATUTES OF THE STATE OF INDIANA, ALL TO THE BEST OF MY KNOWLEDGE AND BELIEF.

THE PLAT MAP AND SURVEY NOTES ARE AN ACCURATE REPRESENTATION OF THE CORNER RESTORED DURING THIS SURVEY. LAST DATE OF FIELD WORK WAS DECEMBER 13, 2012.

Victor H. McCauley Dec. 26, 2012
VICTOR H. McCAULEY, INDIANA LS# 0336 DATE

DECLARATION

I AFFIRM, UNDER THE PENALTIES FOR PERJURY, THAT I HAVE TAKEN RESPONSIBLE CARE TO REDACT, EACH SOCIAL SECURITY NUMBER IN THE DOCUMENT, UNLESS REQUIRED BY LAW.

DECLARANT

VICTOR H. McCAULEY

Victor H. McCauley
SIGNATURE OF DECLARANT

PRINTED NAME OF DECLARANT

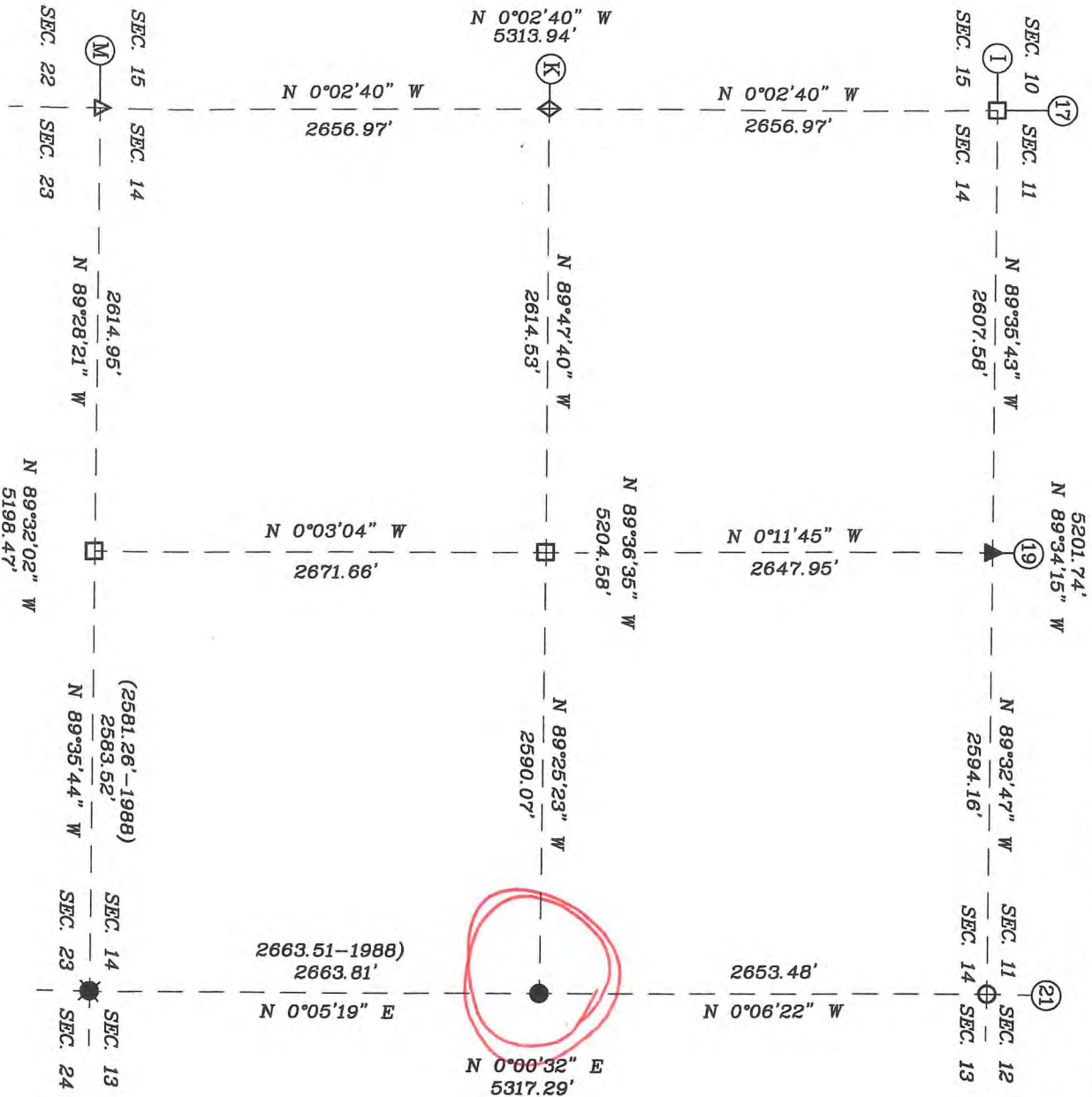
Job #20077-14

[Red scribble]

21-K

SECTION 14,
TOWNSHIP 4 SOUTH, RANGE 4 EAST,
WEBSTER TOWNSHIP,
HARRISON COUNTY, INDIANA

FOR RECORDING INFORMATION



SURVEYOR'S CERTIFICATE

I, VICTOR H. MCCAULEY, PROFESSIONAL LAND SURVEYOR, REGISTERED BY THE LAWS OF THE STATE OF INDIANA, HEREBY DECLARE THAT I HAVE RECOVERED, RESTORED AND PERPETUATED THE CORNERS SHOWN HERON IN SECTION 14, TOWNSHIP 4, SOUTH, RANGE 4 EAST, WEBSTER TOWNSHIP, HARRISON COUNTY, INDIANA, IN ACCORDANCE WITH IAC TITLE 865, THE RULES FOR SURVEYS OF PUBLIC LANDS AND THE STATUTES OF THE STATE OF INDIANA, ALL TO THE BEST OF MY KNOWLEDGE AND BELIEF.

VICTOR H. MCCAULEY, INDIANA LS# S0336

DATE OF SURVEY: NOV. 30, 2012
LAST DATE OF FIELD WORK: NOV. 22, 2012

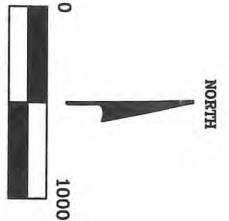
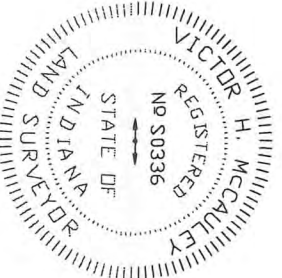
DECLARATION

I, affirm under the penalties of perjury, that I have taken responsible care to redact, each Social Security number in this document, unless required by law.

DECLARANT

Signature of Declarant

Printed Name of Declarant



GRD NORTH PER INDIANA STATE PLANE COORDINATE SYSTEM, EAST ZONE, 1983 (2012) DATUM, PER G.P.S. OBSERVATION.

LEGEND

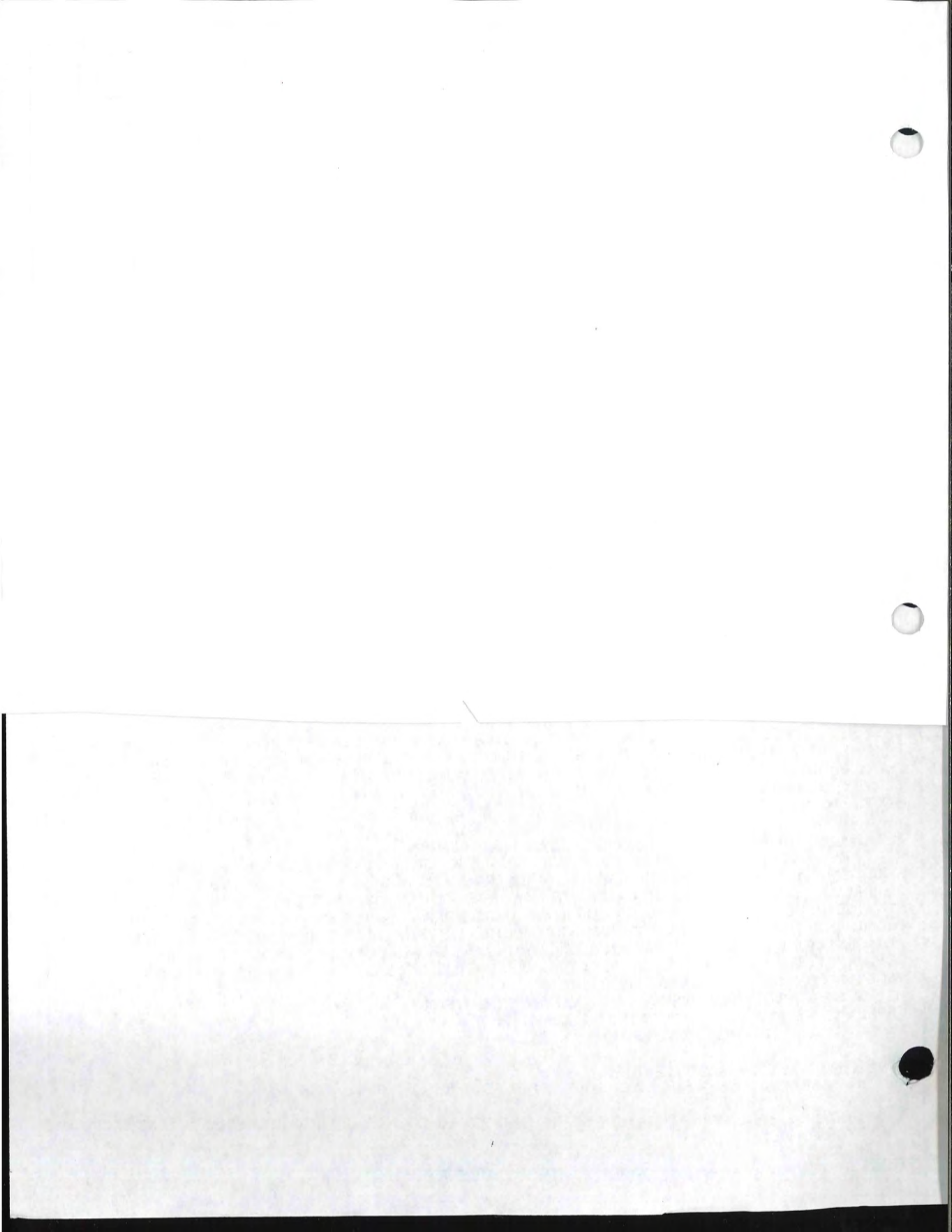
- HISTORICAL STONE (SEE REPORT)
- EXISTING PIPE (SEE REPORT)
- EXISTING STEEL PIN W/CAP (SEE REPORT)
- STEEL PIN W/3/4" ALUM. DISC STAMPED TO DEPICT CORNER POSITION (SEE REPORT)
- EXISTING IMPLEMENT SHAFT (SEE REPORT)
- EXISTING RAILROAD SPIKE (SEE REPORT)
- MAGNETIC READING
- CALCULATED CORNER
- HARRISON COUNTY REFERENCE INDEX NUMBER

THIS SURVEY IS BASED ON THE INDIANA STATE PLANE COORDINATE SYSTEM, EAST ZONE, 1983 (2012) ADJUSTMENT U.S. SURVEY FOOT, THE DISTANCES SHOWN ARE SEA GRD DISTANCES. BASED ON COMBINED SCALE FACTOR OF 0.99995027, TO CONVERT THE SURVEY DISTANCES TO HORIZONTAL GROUND LEVEL DISTANCES DIVIDES THE SURVEY DISTANCES BY THE SCALE FACTOR.

FOR A MORE COMPLETE DESCRIPTION OF EACH CORNER, SEE THE LAND CORNER RECORD CARD ON FILE WITH THE HARRISON COUNTY SURVEYOR. THIS SURVEY IS NOT COMPLETE WITHOUT THE SURVEY PLAT AND SURVEYOR'S REPORT.

MCCAULEY & COMPANY, INC., P.S.C.
PROFESSIONAL LAND SURVEYORS
P.O. BOX 39
ELIZABETH, IN 47117-0039
TELEPHONE: 812-969-2186
mccauleypsc@irother.com

FOR: HARRISON COUNTY SURVEYOR
HAROLD KINSTYVER
245 ATWOOD STREET, SUITE 219
CORYDON, IN 47112



21-K



**PLAT OF SURVEY
2012 HARRISON COUNTY PERPETUATION PROJECT**

SITUATED IN SECTION 14, TOWNSHIP 4 SOUTH, RANGE 4 EAST, WEBSTER TOWNSHIP, HARRISON, INDIANA.

EXISTING MONUMENTS RECOVERED FROM PRIOR SURVEYS CONTINUED

K-19 CENTER QUARTER CORNER IN SECTION 14, T-4-S, R-4-E

RECOVERED SANDSTONE 0.2' BY 0.7' AND 0.3' DEEP, WITH LS131 SPC ON THE S SIDE AND YELLOW HCSS 0.6' EAST. THE STONE WAS LEFT IN PLACE AS RECOVERED. THE STONE IS AT A VERY OLD AND PROMINENT CULTURAL INTERSECTION. THE POSITION OF THE CORNER IS SUPPORTED BY MEASUREMENTS TO ADJACENT MONUMENTS IN ALL CARDINAL DIRECTIONS AND BY VERY OLD AND DISTINCT CULTURAL FEATURES IN THE VICINITY. SEE SURVEYS OF RECORD IN DEED BOOK L-2, PAGES 336-338 AND SURVEY BOOK 3, PAGE 501. NO CORNER ACCESSORIES ESTABLISHED THIS SURVEY.

K-21 QUARTER CORNER TO SECTIONS 13 & 14, T-4-S, R-4-E

RECOVERED 7/8" IMPLEMENT SHAFT 0.5' DEEP, 1 1/2' N OF SOUTH EDGE OF A CRUSHED STONE ACCESS ROAD. THE MONUMENT WAS LEFT IN PLACE AS RECOVERED. THE POSITION OF THE CORNER IS SUPPORTED BY MEASUREMENTS TO ADJACENT MONUMENTS IN ALL CARDINAL DIRECTIONS AND BY VERY OLD AND DISTINCT CULTURAL FEATURES IN THE VICINITY. SEE SURVEYS OF RECORD IN DEED BOOK L-2, PAGES 336-338 AND SURVEY BOOK 3, PAGE 501. NO CORNER ACCESSORIES ESTABLISHED THIS SURVEY.

M-17 SECTION CORNER TO SECTIONS 14, 15, 22 & 23, T-4-S, R-4-E

RECOVERED RAILROAD SPIKE 1' E OF CENTERLINE OF ELIZABETH- NEW MIDDLETOWN ROAD. THE MONUMENT WAS LEFT IN PLACE AS RECOVERED. THIS CORNER HAS A LONG LINAGE AND HAS BEEN USED BY LOCAL SURVEYORS AS THE SECTION CORNER FOR WELL OVER 15 YEARS. THE POSITION OF THE CORNER IS SUPPORTED BY MEASUREMENTS TO ADJACENT MONUMENTS IN ALL CARDINAL DIRECTIONS AND BY VERY OLD AND DISTINCT CULTURAL FEATURES IN THE VICINITY. CORNER ACCESSORIES ESTABLISHED:
FENCE CORNER POST, N89°E, 21.48' TO BOTTON NAIL OF HCSS
UTILITY POLE, S23°E, 49.25' TO A MAG NAIL 0.6' UP ON W SIDE
TRAFFIC SIGN POST, N74°W, 15.20'

M-19 QUARTER SECTION CORNER TO SECTIONS 14 & 23, T-4-S, R-4-E

RECOVERED SANDSTONE 0.4' BY 0.1' PROJECTING 0.2' AT FENCE CORNER POST, WITH LS131 SPC ON THE EAST SIDE AND A CARSONITE POST 0.2' EAST. THE STONE IS AT A VERY OLD AND PROMINENT CULTURAL INTERSECTION. THE POSITION OF THE CORNER IS SUPPORTED BY MEASUREMENTS TO ADJACENT MONUMENTS IN ALL CARDINAL DIRECTIONS AND BY VERY OLD AND DISTINCT CULTURAL FEATURES IN THE VICINITY. SEE SURVEYS OF RECORD IN DEED BOOK L-2, PAGES 336-338 AND SURVEY BOOK 3, PAGE 501. NO CORNER ACCESSORIES ESTABLISHED THIS SURVEY

M-21 SECTION CORNER TO SECTIONS 13, 14, 23 & 24, T-4-S, R-4-E

RECOVERED 2" DIAMETER BY 2" DEEP DRILL HOLE IN A SPRING BRANCH, 23.4' BELOW THE SOUTH SPRING DAM AND 28' SOUTH OF THE SPRING CAVE ENTRANCE AS MONUMENTED IN 1937 AND AS DEPICTED ON A PLAT RECORDED IN MICESSELLANOUS RECORD 9, PAGE 265. SET A #5 BY 3" STEEL PIN W/3/4" ALUMINUM DISK STAMPED TO DEPICT THE CORNER POSITION IN THE DRILL HOLE. THE MONUMENT IS IN A VERY OLD AND PROMINENT CULTURAL FEATURE. THE POSITION OF THE CORNER IS SUPPORTED BY MEASUREMENTS TO ADJACENT MONUMENTS IN ALL CARDINAL DIRECTIONS AND BY VERY OLD AND DISTINCT CULTURAL FEATURES IN THE VICINITY. SEE SURVEYS OF RECORD IN DEED BOOK L-2, PAGES 336-338 AND SURVEY BOOK 3, PAGE 501. CORNER ACCESSORIES ESTABLISHED:
W. OAK 21", N78°W, 28.0' (SLOPE) TO A MAG NAIL 0.6' UP IN N SIDE
CHERRY 8", N58°E, 17.88' (SLOPE) TO THE BOTTOM NAIL OF A HCSS
FENCE -GATE POST, N70°E, 22.35' (SLOPE)

SGS MONUMENT W-36, 1937 PID JA1741

SEE THE HARRISON COUNTY SURVEYORS OFFICE FOR ADDITIONAL INFORMATION.

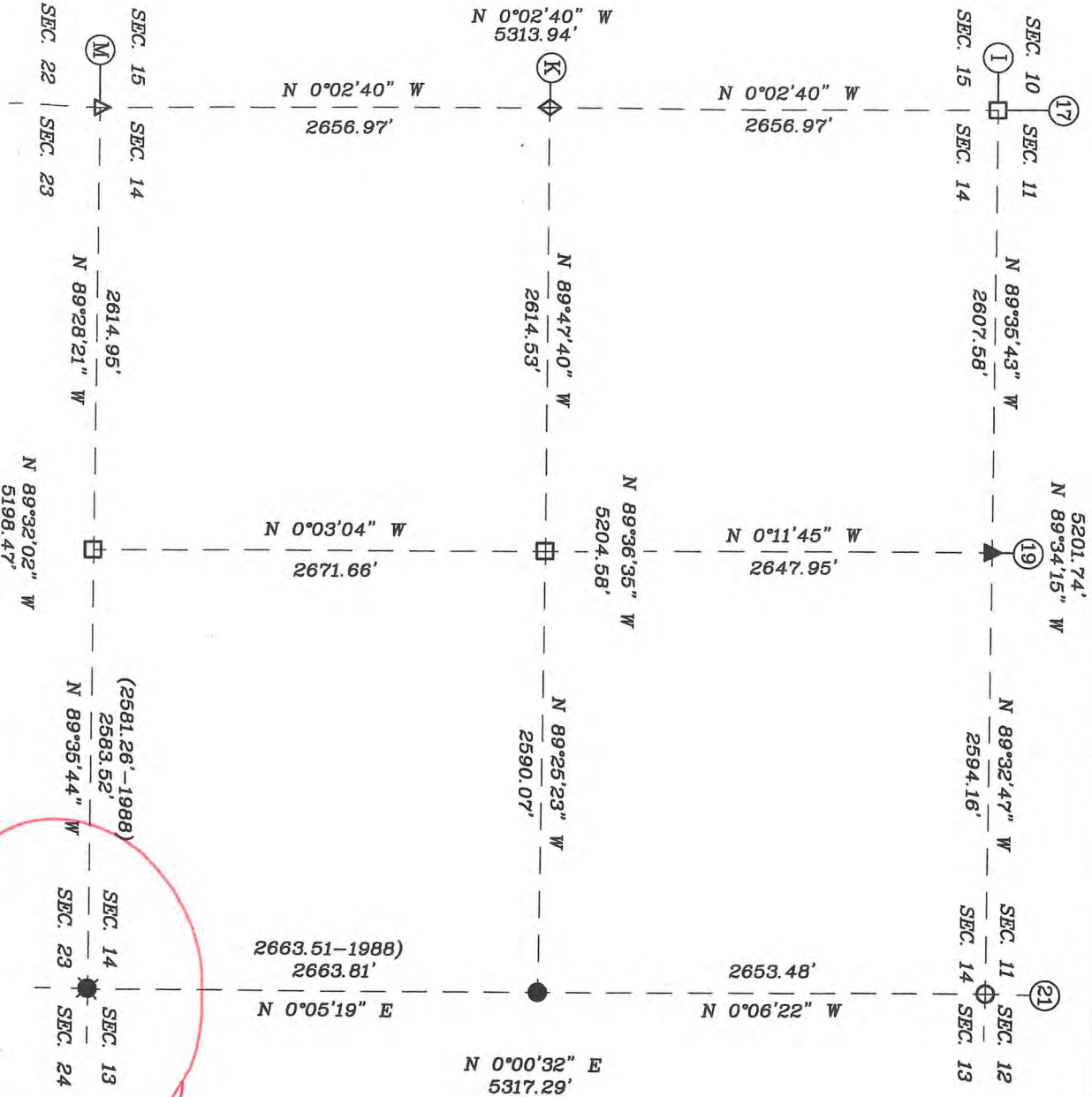
FOR ADDITIONAL CORNER INFORMATION, SEE THE INDIVIDUAL CORNER RECORDS IN THE HARRISON COUNTY SURVEYORS OFFICE.

THIS REPORT OF SURVEY IS NOT COMPLETE WITHOUT THE SURVEY PLAT.

Job # 20077-14 21-M

SECTION 14,
TOWNSHIP 4 SOUTH, RANGE 4 EAST,
WEBSTER TOWNSHIP,
HARRISON COUNTY, INDIANA

FOR RECORDING INFORMATION



SURVEYOR'S CERTIFICATE

I, VICTOR H. MCCAULEY, PROFESSIONAL LAND SURVEYOR, REGISTERED BY THE LAWS OF THE STATE OF INDIANA, HEREBY DECLARE THAT I HAVE RECOVERED, RESTORED AND PERPETUATED THE CORNERS SHOWN HEREON IN SECTION 14, TOWNSHIP 4, SOUTH, RANGE 4 EAST, WEBSTER TOWNSHIP, HARRISON COUNTY, INDIANA IN ACCORDANCE WITH IAC TITLE 865, THE RULES FOR SURVEYS OF PUBLIC LANDS AND THE STATUTES OF THE STATE OF INDIANA, ALL TO THE BEST OF MY KNOWLEDGE AND BELIEF.

VICTOR H. MCCAULEY, INDIANA L.S.# 509336

DATE OF SURVEY: NOV. 30, 2012

LAST DATE OF FIELD WORK: NOV. 22, 2012

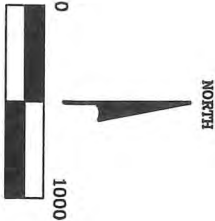
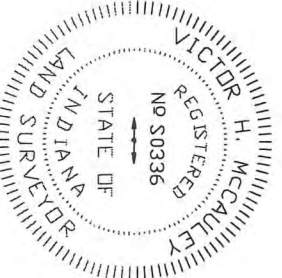
DECLARATION

I affirm under the penalties of perjury, that I have taken reasonable care to reduce, each Social Security number in this document, unless required by law.

DECLARANT

Signature of Declarant

Printed Name of Declarant



GRID NORTH PER INDIANA STATE PLANE COORDINATE SYSTEM, EAST ZONE, 1983 (2012) DATUM, PER G.P.S. OBSERVATION.

LEGEND

- HISTORICAL STONE (SEE REPORT)
- EXISTING PIPE (SEE REPORT)
- EXISTING STEEL PIN W/CAP (SEE REPORT)
- STEEL PIN W/3/4" ALUM. DISC STAMPED TO DEPICT CORNER POSITION (SEE REPORT)
- EXISTING IMPLIMENT SHAFT (SEE REPORT)
- EXISTING RAILROAD SPIKE (SEE REPORT)
- MAGNETIC READING
- CALCULATED CORNER
- HARRISON COUNTY REFERENCE INDEX NUMBER

THIS SURVEY IS BASED ON THE INDIANA STATE PLANE COORDINATE SYSTEM, EAST ZONE, 1983 (2012) ADJUSTMENT U.S. SURVEY FOOT, THE DISTANCES SHOWN ARE SEA GRID DISTANCES. BASED ON COMBINED SCALE FACTOR OF 0.99985027, TO CONVERT THE SURVEY DISTANCES TO HORIZONTAL GROUND LEVEL DISTANCES DIVIDES THE SURVEY DISTANCES BY THE SCALE FACTOR.

FOR A MORE COMPLETE DESCRIPTION OF EACH CORNER, SEE THE LAND CORNER RECORD CARD ON FILE WITH THE HARRISON COUNTY SURVEYOR.

THIS SURVEY IS NOT COMPLETE WITHOUT THE SURVEY PLAT AND SURVEYOR'S REPORT.

MCCAULEY & COMPANY, INC., P.S.C.
PROFESSIONAL LAND SURVEYORS
P.O. BOX 39
ELIZABETH, IN 47117-0039
TELEPHONE: 812-969-2186
mccauleypsc@frontier.com

FOR: HARRISON COUNTY SURVEYOR
HAROLD KLINSTIVER
245 ATWOOD STREET, SUITE 219
CORYDON, IN 47112

21-M

~~21-M~~

**PLAT OF SURVEY
2012 HARRISON COUNTY PERPETUATION PROJECT**

SITUATED IN SECTION 14, TOWNSHIP 4 SOUTH, RANGE 4 EAST, WEBSTER TOWNSHIP, HARRISON,
INDIANA.

SURVEYOR'S AFFIDAVIT

I, VICTOR H. McCAULEY, PROFESSIONAL LAND SURVEYOR, AND REGISTERED BY THE LAWS OF THE
STATE OF INDIANA, HEREBY CERTIFY THAT I HAVE SURVEYED AND SUBDIVIDED THE LANDS IN SECTION 14,
TOWNSHIP 4 SOUTH, RANGE 4 EAST, WEBSTER TOWNSHIP, HARRISON COUNTY, INDIANA, IN ACCORDANCE WITH
IAC TITLE 865 AND THE RULES FOR SURVEYS OF PUBLIC LANDS AND THE STATUES OF THE STATE OF INDIANA,
ALL TO THE BEST OF MY KNOWLEDGE AND BELIEF.

THE PLAT MAP AND SURVEY NOTES ARE AN ACCURATE REPRESENTATION OF THE CORNERS
RECOVERED AND RESTORED DURING THIS SURVEY. LAST DATE OF FIELD WORK WAS NOVEMBER 22, 2012.

Vict H. Mc
VICTOR H. McCAULEY, INDIANA LS# 0336

Nov. 30, 2012
DATE

DECLARATION

I AFFIRM, UNDER THE PENALTIES FOR PERJURY, THAT I HAVE TAKEN RESPONSIBLE CARE
TO REDACT, EACH SOCIAL SECURITY NUMBER IN THE DOCUMENT, UNLESS REQUIRED BY
LAW.

DECLARANT

Vict H. Mc
SIGNATURE OF DECLARANT

VICTOR H. McCAULEY

PRINTED NAME OF DECLARANT

21-M ~~XXXXXXXXXX~~

**PLAT OF SURVEY
2012 HARRISON COUNTY PERPETUATION PROJECT**

SITUATED IN SECTION 14, TOWNSHIP 4 SOUTH, RANGE 4 EAST, WEBSTER TOWNSHIP, HARRISON, INDIANA.

EXISTING MONUMENTS RECOVERED FROM PRIOR SURVEYS CONTINUED

K-19 CENTER QUARTER CORNER IN SECTION 14, T-4-S, R-4-E

RECOVERED SANDSTONE 0.2' BY 0.7' AND 0.3' DEEP, WITH LS131 SPC ON THE S SIDE AND YELLOW HCSS 0.6' EAST. THE STONE WAS LEFT IN PLACE AS RECOVERED. THE STONE IS AT A VERY OLD AND PROMINENT CULTURAL INTERSECTION. THE POSITION OF THE CORNER IS SUPPORTED BY MEASUREMENTS TO ADJACENT MONUMENTS IN ALL CARDINAL DIRECTIONS AND BY VERY OLD AND DISTINCT CULTURAL FEATURES IN THE VICINITY. SEE SURVEYS OF RECORD IN DEED BOOK L-2, PAGES 336-338 AND SURVEY BOOK 3, PAGE 501. NO CORNER ACCESSORIES ESTABLISHED THIS SURVEY.

K-21 QUARTER CORNER TO SECTIONS 13 & 14, T-4-S, R-4-E

RECOVERED 7/8" IMPLEMENT SHAFT 0.5' DEEP, 1 1/2' N OF SOUTH EDGE OF A CRUSHED STONE ACCESS ROAD. THE MONUMENT WAS LEFT IN PLACE AS RECOVERED. THE POSITION OF THE CORNER IS SUPPORTED BY MEASUREMENTS TO ADJACENT MONUMENTS IN ALL CARDINAL DIRECTIONS AND BY VERY OLD AND DISTINCT CULTURAL FEATURES IN THE VICINITY. SEE SURVEYS OF RECORD IN DEED BOOK L-2, PAGES 336-338 AND SURVEY BOOK 3, PAGE 501. NO CORNER ACCESSORIES ESTABLISHED THIS SURVEY.

M-17 SECTION CORNER TO SECTIONS 14, 15, 22 & 23, T-4-S, R-4-E

RECOVERED RAILROAD SPIKE 1' E OF CENTERLINE OF ELIZABETH- NEW MIDDLETOWN ROAD. THE MONUMENT WAS LEFT IN PLACE AS RECOVERED. THIS CORNER HAS A LONG LINAGE AND HAS BEEN USED BY LOCAL SURVEYORS AS THE SECTION CORNER FOR WELL OVER 15 YEARS. THE POSITION OF THE CORNER IS SUPPORTED BY MEASUREMENTS TO ADJACENT MONUMENTS IN ALL CARDINAL DIRECTIONS AND BY VERY OLD AND DISTINCT CULTURAL FEATURES IN THE VICINITY. CORNER ACCESSORIES ESTABLISHED:
FENCE CORNER POST, N89°E, 21.48' TO BOTTON NAIL OF HCSS
UTILITY POLE, S23°E, 49.25' TO A MAG NAIL 0.6' UP ON W SIDE
TRAFFIC SIGN POST, N74°W, 15.20'

M-19 QUARTER SECTION CORNER TO SECTIONS 14 & 23, T-4-S, R-4-E

RECOVERED SANDSTONE 0.4' BY 0.1' PROJECTING 0.2' AT FENCE CORNER POST, WITH LS131 SPC ON THE EAST SIDE AND A CARSONITE POST 0.2' EAST. THE STONE IS AT A VERY OLD AND PROMINENT CULTURAL INTERSECTION. THE POSITION OF THE CORNER IS SUPPORTED BY MEASUREMENTS TO ADJACENT MONUMENTS IN ALL CARDINAL DIRECTIONS AND BY VERY OLD AND DISTINCT CULTURAL FEATURES IN THE VICINITY. SEE SURVEYS OF RECORD IN DEED BOOK L-2, PAGES 336-338 AND SURVEY BOOK 3, PAGE 501. NO CORNER ACCESSORIES ESTABLISHED THIS SURVEY

M-21 SECTION CORNER TO SECTIONS 13, 14, 23 & 24, T-4-S, R-4-E

RECOVERED 2" DIAMETER BY 2" DEEP DRILL HOLE IN A SPRING BRANCH, 23.4' BELOW THE SOUTH SPRING DAM AND 28' SOUTH OF THE SPRING CAVE ENTRANCE AS MONUMENTED IN 1937 AND AS DEPICTED ON A PLAT RECORDED IN MICESSELLANOUS RECORD 9, PAGE 265. SET A #5 BY 3" STEEL PIN W/3/4" ALUMINUM DISK STAMPED TO DEPICT THE CORNER POSITION IN THE DRILL HOLE. THE MONUMENT IS IN A VERY OLD AND PROMINENT CULTURAL FEATURE. THE POSITION OF THE CORNER IS SUPPORTED BY MEASUREMENTS TO ADJACENT MONUMENTS IN ALL CARDINAL DIRECTIONS AND BY VERY OLD AND DISTINCT CULTURAL FEATURES IN THE VICINITY. SEE SURVEYS OF RECORD IN DEED BOOK L-2, PAGES 336-338 AND SURVEY BOOK 3, PAGE 501. CORNER ACCESSORIES ESTABLISHED:
W. OAK 21", N78°W, 28.0' (SLOPE) TO A MAG NAIL 0.6' UP IN N SIDE
CHERRY 8", N58°E, 17.88' (SLOPE) TO THE BOTTOM NAIL OF A HCSS
FENCE -GATE POST, N70°E, 22.35' (SLOPE)

USGS MONUMENT W-36, 1937 PID JA1741

SEE THE HARRISON COUNTY SURVEYORS OFFICE FOR ADDITIONAL INFORMATION.

FOR ADDITIONAL CORNER INFORMATION, SEE THE INDIVIDUAL CORNER RECORDS IN THE HARRISON COUNTY SURVEYORS OFFICE.

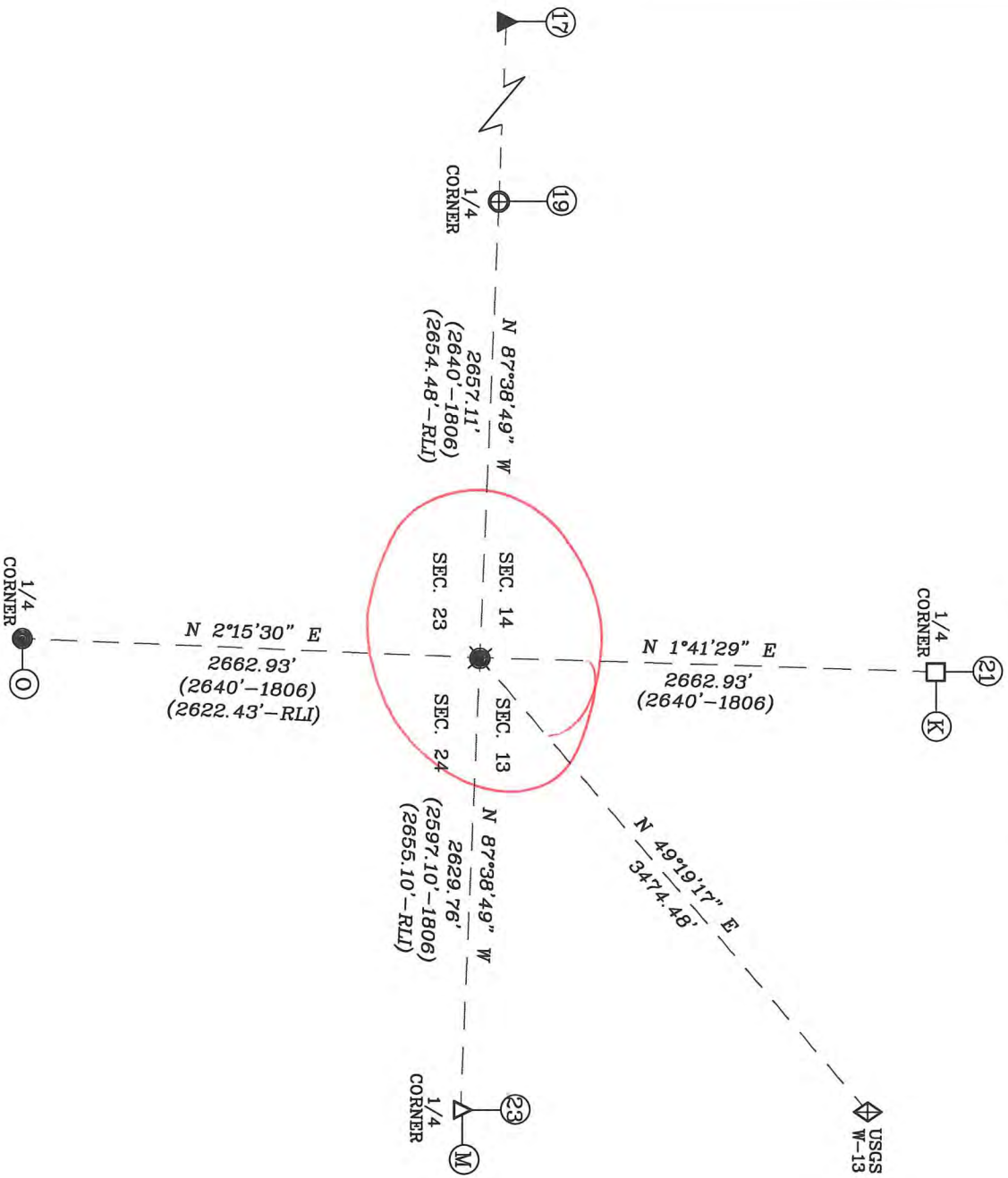
THIS REPORT OF SURVEY IS NOT COMPLETE WITHOUT THE SURVEY PLAT.

21-M

Handwritten scribbles

SECTIONS 13, 14, 23 & 24,
TOWNSHIP 4 SOUTH, RANGE 3 EAST,
HARRISON TOWNSHIP,
HARRISON COUNTY, INDIANA

FOR RECORDING INFORMATION



SURVEYOR'S CERTIFICATE

I, VICTOR H. MCCAULEY, PROFESSIONAL LAND SURVEYOR, REGISTERED BY THE LAWS OF THE STATE OF INDIANA, HEREBY DECLARE THAT I HAVE RESTORED AND PERPETUATED THE SECTION CORNER COMMON TO SECTIONS 13, 14, 23 & 24, TOWNSHIP 4 SOUTH, RANGE 3 EAST, HARRISON TOWNSHIP, HARRISON COUNTY, INDIANA IN ACCORDANCE WITH IAC TITLE 865, THE RULES FOR SURVEYS OF PUBLIC LANDS AND THE STATUTES OF THE STATE OF INDIANA, ALL TO THE BEST OF MY KNOWLEDGE AND BELIEF.

VICTOR H. MCCAULEY, INDIANA LS# S0336

DATE OF SURVEY: DEC. 26, 2012

LAST DATE OF FIELD WORK: DEC. 13, 2012

DECLARATION

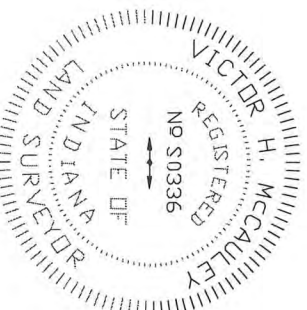
I, affirm under the penalties of perjury, that I have taken responsible care to redact each Social Security number in this document, unless required by law.

DECLARANT

Signature of Declarant

VICTOR H. MCCAULEY

Printed Name of Declarant



GRID NORTH PER INDIANA STATE PLANE COORDINATE SYSTEM, EAST ZONE, 1983 (2012) DATUM, PER G.P.S. OBSERVATION.

LEGEND

- HISTORICAL STONE (SEE REPORT)
- EXISTING MAG HUB IN CONC. PLUG (SEE REPORT)
- REFERENCE MONUMENT SET STEEL PIN W/3/4" ALUM. DISC STAMPED TO DEPICT CORNER POSITION (SEE REPORT)
- EXISTING STEEL PIN (SEE REPORT)
- EXISTING MAG NAIL (SEE REPORT)
- EXISTING RAILROAD SPIKE (SEE REPORT)
- 1806 ORIGINAL SURVEY MEASUREMENTS
- R/L ROBERT L. ISGRIGG I.S. 366
- USGS W-13 N: 1062336.03 E: 192551.02
- HARRISON COUNTY REFERENCE INDEX NUMBER

THIS SURVEY IS BASED ON THE INDIANA STATE PLANE COORDINATE SYSTEM, EAST ZONE, 1983 (2012) ADJUSTMENT U.S. SURVEY FOOT, THE DISTANCES SHOWN ARE SEA GRID DISTANCES. BASED ON COMBINED SCALE FACTOR OF 0.99996222 TO CONVERT THE SURVEY DISTANCES TO HORIZONTAL GROUND LEVEL DISTANCES DIVIDES THE SURVEY DISTANCES BY THE SCALE FACTOR. FOR A MORE COMPLETE DESCRIPTION OF EACH CORNER, SEE THE LAND CORNER RECORD CARD ON FILE WITH THE HARRISON COUNTY SURVEYOR. THIS SURVEY IS NOT COMPLETE WITHOUT THE SURVEY PLAT AND SURVEYOR'S REPORT.

MCCAULEY & COMPANY, INC., P.S.C.
PROFESSIONAL LAND SURVEYORS
P.O. BOX 39
ELIZABETH, IN 47117-0039
TELEPHONE: 812-969-2186
mccauleyps@frontier.com

FOR: HARRISON COUNTY SURVEYOR
HAROLD KINSTNER
245 ATWOOD STREET, SUITE 219
CORYDON, IN 47112

PLAT OF SURVEY
2012 HARRISON COUNTY PERPETUATION PROJECT

SITUATED IN SECTIONS 13, 14, 23 & 24, TOWNSHIP 4 SOUTH, RANGE 3 EAST, HARRISON TOWNSHIP,
HARRISON COUNTY, INDIANA.

REPORT OF SURVEY

M-21

THIS SURVEY WAS PERFORMED FOR HAROLD KLINSTIVER, HARRISON COUNTY SURVEYOR AS A PERPETUATION PROJECT FOR THE SECTION CORNER TO SECTIONS 13, 14, 23 & 24, TOWNSHIP 4 SOUTH, RANGE 3 EAST, HARRISON TOWNSHIP, HARRISON COUNTY, INDIANA. THIS SURVEY IS A CONTINUATION OF SEVERAL PRIOR SURVEYS, IN THE SAME VICINITY, BY THIS FIRM.

THE ORIGINAL GOVERNMENT SURVEYS WERE CONDUCTED BY JOSEPH H. SARWELL, DEPUTY SURVEYOR IN JANUARY OF 1806. SUBSEQUENT SURVEYS WERE PERFORMED BY HARRISON COUNTY SURVEYORS AND PRIVATE SURVEYORS AS CITED BELOW. THE ORIGINAL AND SUBSEQUENT SURVEY NOTES ARE ON FILE IN THE HARRISON COUNTY SURVEYOR'S OFFICE.

PRIOR TO PERFORMING THIS SURVEY, I REVIEWED THE AVAILABLE ORIGINAL, SUBSEQUENT AND PRIVATE SURVEY NOTES. I RESEARCHED PERTINENT DEEDS AND ADJOINING DEEDS. I CONTACTED ADJOINING LAND OWNERS, CONSULTED WITH THE HARRISON COUNTY SURVEYOR AND OTHER LOCAL SURVEYORS FOR INFORMATION PERTAINING TO THE LOCATION OF CORNERS NEEDED TO PERFORM THIS SURVEY.

THE CORNER RECOVERED AND PERPETUATED BY THIS SURVEY IS MARKED IN THE LEGEND. THE BEARING BETWEEN MONUMENTS IS GRID NORTH AS DETERMINED BY GPS SURVEYS.

HORIZONTAL AND VERTICAL CONTROLS FOR THIS SURVEY ARE BASED ON STATIC AND RTK GPS METHODS AND COORDINATES WERE CONSTRAINED TO AN NGS OPUS SOLUTION POSITION, INDIANA STATE PLANE COORDINATE SYSTEM, EAST ZONE, 1983 (2012) DATUM, FOR AN ON-SITE GPS BASE STATION. THIS IS A RETRACEMENT "RURAL CLASS SURVEY" AS DEFINED BY 865 IAC 1-12 SECTION 7, PARAGRAPH 3 (e-3) AND THE FIELD WORK IS WITHIN THE "RELATIVE POSITIONAL ACCURACY" SPECIFICATIONS CITED THEREIN.

CONVENTIONAL TERRESTRIAL TRAVERSES WERE USED TO DETERMINE CORNER POSITIONS THAT WERE DEEMED UNSUITABLE FOR GPS OBSERVATIONS. THE POSITION OF MONUMENTS WAS VERIFIED WITH REDUNDANT MEASUREMENTS. ALL TRAVERSES WERE EITHER CLOSED TRAVERSES OR WERE CONTROLLED BY GPS SURVEY METHODS

THIS SURVEY IS BASED ON THE INDIANA STATE PLANE COORDINATE SYSTEM, EAST ZONE, 1983 (2012) DATUM, U.S. SURVEY FOOT. THE DISTANCES SHOWN ARE SEA LEVEL GRID DISTANCES, BASED ON A COMBINED SCALE FACTOR OF 0.99996222. TO CONVERT SURVEY DISTANCES TO HORIZONTAL GROUND LEVEL DISTANCES, DIVIDE THE SURVEY DISTANCES BY THE SCALE FACTOR

EXISTING MONUMENTS RECOVERED DURING PRIOR SURVEYS

K-21 QUARTER CORNER TO SECTIONS 13 & 14, T-4-S, R-3-E

RECOVERED FIELD STONE ORIENTED IN CARDINAL DIRECTIONS AND IN E-W FENCE LINE. THE STONE IS AT A VERY OLD AND PROMINENT CULTURAL INTERSECTION. THE POSITION OF THE CORNER IS SUPPORTED BY MEASUREMENTS TO ADJACENT MONUMENTS IN ALL CARDINAL DIRECTIONS AND BY VERY OLD AND DISTINCT CULTURAL FEATURES IN THE VICINITY. SEE SURVEY RECORDED AS INSTRUMENT #201103259. CORNER ACCESSORIES ESTABLISHED IN 2011:
SET CARSONITE POST ON THE SOUTH FACE OF THE STONE
SUGAR 30", S75°E, 7.7' W/HARRISON COUNTY SURVEYOR'S SIGN

M-17 CORNER TO SECTIONS 14, 15, 22 & 23, T-4-S, R-3-E

RECOVERED MAGNETIC READINGS IN FAIRVIEW CHURCH ROAD PER PRIOR SURVEYS. SEE SURVEY BOOK 5, PAGE 63 AND INSTRUMENTS #200503223 & 201103259.

M-19 QUARTER CORNER TO SECTIONS 14 & 23, T-4-S, R-3-E

RECOVERED MAG HUB IN A CONCRETE PLUG IN FAIRVIEW CHURCH ROAD AS PERPETUATED DURING PRIOR SURVEYS. SEE SURVEYS RECORDED IN SURVEY BOOK 4, PAGE 121, SURVEY BOOK 5, PAGE 63 AND INSTRUMENT #201103259. THE MONUMENT IS AT A VERY OLD AND PROMINENT CULTURAL INTERSECTION. THE POSITION OF THE CORNER IS SUPPORTED BY MEASUREMENTS TO ADJACENT MONUMENTS IN ALL CARDINAL DIRECTIONS AND BY VERY OLD AND DISTINCT CULTURAL FEATURES IN THE VICINITY.

M-21 QUARTER CORNER TO SECTIONS 13 & 24, T-4-S, R-3-E

RECOVERED MAG NAIL 0.3' DEEP IN UNION CHAPEL ROAD. THE MONUMENT IS AT A VERY OLD AND PROMINENT CULTURAL INTERSECTION. THE POSITION OF THE CORNER IS SUPPORTED BY MEASUREMENTS TO ADJACENT MONUMENTS IN ALL CARDINAL DIRECTIONS AND BY VERY OLD AND DISTINCT CULTURAL FEATURES IN THE VICINITY

PLAT OF SURVEY
2012 HARRISON COUNTY PERPETUATION PROJECT

SITUATED IN SECTIONS 13, 14, 23 & 24, TOWNSHIP 4 SOUTH, RANGE 3 EAST, HARRISON TOWNSHIP,
HARRISON COUNTY, INDIANA.

M-21

SURVEYOR'S AFFIDAVIT

I, VICTOR H. MCCAULEY, PROFESSIONAL LAND SURVEYOR, AND REGISTERED BY THE LAWS OF THE STATE OF INDIANA, HEREBY CERTIFY THAT I HAVE SURVEYED THE LANDS AS DEPICTED IN SECTIONS 13, 14, 23 & 24, TOWNSHIP 4 SOUTH, RANGE 3 EAST, HARRISON TOWNSHIP, HARRISON COUNTY, INDIANA, IN ACCORDANCE WITH IAC TITLE 865 AND THE RULES FOR SURVEYS OF PUBLIC LANDS AND THE STATUTES OF THE STATE OF INDIANA, ALL TO THE BEST OF MY KNOWLEDGE AND BELIEF.

THE PLAT MAP AND SURVEY NOTES ARE AN ACCURATE REPRESENTATION OF THE CORNER RESTORED DURING THIS SURVEY. LAST DATE OF FIELD WORK WAS DECEMBER 13, 2012.

V.H. Mc *Dec. 26, 2012*
VICTOR H. MCCAULEY, INDIANA LS# 0336 DATE

DECLARATION

I AFFIRM, UNDER THE PENALTIES FOR PERJURY, THAT I HAVE TAKEN RESPONSIBLE CARE TO REDACT, EACH SOCIAL SECURITY NUMBER IN THE DOCUMENT, UNLESS REQUIRED BY LAW.

DECLARANT

VICTOR H. MCCAULEY

V.H. Mc
SIGNATURE OF DECLARANT

PRINTED NAME OF DECLARANT

PLAT OF SURVEY
2012 HARRISON COUNTY PERPETUATION PROJECT

M-21

SITUATED IN SECTIONS 13, 14, 23 & 24, TOWNSHIP 4 SOUTH, RANGE 3 EAST, HARRISON TOWNSHIP,
HARRISON COUNTY, INDIANA.

EXISTING MONUMENTS RECOVERED DURING PRIOR SURVEYS

0-21 QUARTER CORNER TO SECTIONS 23 & 24, T-4-S, R-3-E

RECOVERED #4 STEEL PIN DURING 1998 SURVEYS AS DEPICTED ON 1992 SURVEY OF RECORD IN SURVEY BOOK 1, PAGE 318 (ALSO SEE SURVEY BOOK 3, PAGE 644 & SURVEY BOOK 4, PAGE 310). THE MONUMENT IS AT A VERY OLD AND PROMINENT CULTURAL INTERSECTION. THE POSITION OF THE CORNER IS SUPPORTED BY MEASUREMENTS TO ADJACENT MONUMENTS IN ALL CARDINAL DIRECTIONS AND BY VERY OLD AND DISTINCT CULTURAL FEATURES IN THE VICINITY. SEE SURVEYS OF RECORD IN THE HARRISON COUNTY RECORDS.

USGS MONUMENT W-13, 1937

USGS MONUMENT ON THE WEST SIDE OF OLD HIGHWAY 135 NEAR THE SE CORNER OF JORDAN CEMETERY.

SECTION CORNER RESTORED

M-21 CORNER TO SECTIONS 13, 14, 23 & 24, T-4-S, R-3-E

RESTORED CORNER POSITION ON THE EAST-WEST SECTION LINE AT NEAR PROPORTIONAL MEASUREMENTS IN ALL CARDINAL DIRECTIONS. THE POSITION OF THE CORNER IS SUPPORTED BY MEASUREMENTS TO ADJACENT MONUMENTS IN ALL CARDINAL DIRECTIONS AND BY VERY OLD AND DISTINCT CULTURAL FEATURES IN THE VICINITY. THE CORNER POSITION FELT IN A CULTIVATED FIELD AND PRIOR TO RESTORING THE CORNER I HAD SEVERAL CONVERSATIONS WITH MR. ROBERT MATHESS AND MR. ROBERT WELMAN CONCERNING THE LOCATION OF THIS CORNER. NEITHER COULD REMEMBER A CORNER IN THE FIELD AND BOTH MEN HAVE ACCEPTED THE OLD NORTH-SOUTH FENCE LINE AS THE SECTION LINE. THERE ARE ALSO SEVERAL GENERATIONS OF SURVEYS BY ROBERT LEE ISGRIGG THAT DEPICTED THIS CORNER AS BEING A FRAGMENTED STONE. AS CITED ABOVE, MR. MATHESS HAS FARMED AND CULTIVATED THIS VICINITY FOR OVER FIFTY (50) YEARS AND COULD NOT RECALL A STONE EVERY BEING THERE. SEE COMMENTS IN THE NARRATIVE BELOW. A WITNESS MONUMENT WAS SET 44.5' WEST ALONG THE SECTION LINE FROM THE CORNER. THE WITNESS MONUMENT IS A #5 BY 30" STEEL PIN WITH A 3/4" ALUMINUM DISK STAMPED TO DEPICT THE CORNER POSITION. ACCESSORIES ESTABLISHED FOR THE WITNESS MONUMENT:
UTILITY POLE, NORTH, 90.64' TO A MAG NAIL 0.6' UP ON THE EAST SIDE
UTILITY POLE W/TRANSFORMER, N39°W, 102.87' TO A MAG NAIL 0.6' UP ON THE NORTHEAST SIDE
UTILITY POLE, S2°W, 65.45' TO A MAG NAIL UP 0.6' ON THE EAST SIDE
SUGAR 22", S84°W, 62.94'

"T" FENCE POST W/HARRISON COUNTY SURVEY SIGN, S38°W, 4.0'
RLI-SPC, N89°7'31"W, 715.65'
RLI-SPC, S85°01'30"E, 706.57'

NARRATIVE

I HAVE VISITED THIS CORNER POSITION SEVERAL TIMES IN THE PAST FIFTEEN (15) YEARS AND SPOKE WITH MR. ROBERT MATHESS DURING SEVERAL PRIOR SURVEYS PERFORMED BY ME IN THIS VICINITY.

AS STATED ABOVE SURVEYOR ISGRIGG CALLS FOR A FRAGMENTED STONE FOR THIS CORNER. I MADE A THROUGH AND EXHAUSTIVE SEARCH FOR THE FRAGMENTED STONE WITH NO LUCK, HOWEVER I DID RECOVER EIGHT (8) MONUMENTS CITED BY SURVEYOR ISGRIGG AND ATTEMPTED TO RECONCILE THE SURVEY PLAT AND DEED DIMENSIONS WITH THE DISTANCES MEASURED BETWEEN THE RECOVERED MONUMENTS TO NO AVAIL. IN MY OPINION THE ISGRIGG SURVEY CONTAINS SEVERAL DIMENSIONING BLUNDERS. ALSO, THE ISGRIGG SURVEY PLAT CONTAINS SEVERAL DISCREPANCIES WHERE CALLS ARE MADE FOR "NO MONUMENT FOUND" ON CORNERS M-19 & O-21. I HAD VISITED BOTH CORNERS PRIOR TO THE 2000 ISGRIGG SURVEY AND RECOVERED MONUMENTS PER THE COUNTY RECORDS ON BOTH CORNERS AND FURTHERMORE, SURVEYOR ISGRIGG CITES A STONE ON THE SE CORNER OF SECTION 23, I VISITED THAT CORNER IN SEPTEMBER AND OCTOBER OF 1998 AND NO SURVEY STONE EXISTED DURING MY VISITS AND PRIMAVERA VISITED THE CORNER IN 2002 AND DID NOT RECOVER A STONE EITHER. THE ISGRIGG SURVEY PLAT ALSO DEPICTS SEVERAL OTHER EXISTING CORNER MONUMENTS THAT WERE NOT HONORED. THESE EXISTING MONUMENTS ARE NEARLY IN COINCIDENCE WITH THE CORNER I RESTORED, ELIMINATING THE OVERLAPS AND GAPS CITED BY SURVEYOR ISGRIGG.

THEREFORE I RESTORED THE CORNER POSITION PER "THE CHIEF JUSTICE COOLEY DOCTRINE" BY NOT DISRUPTION THE FREE HOLDINGS OR PERPETUATING THE DISCREPANCIES IN THE ISGRIGG SURVEY.

FOR ADDITIONAL CORNER INFORMATION, SEE THE INDIVIDUAL CORNER RECORDS IN THE HARRISON COUNTY SURVEYORS OFFICE.

THIS REPORT OF SURVEY IS NOT COMPLETE WITHOUT THE SURVEY PLAT.


LAND CORNER RECORD
(RECTANGULAR SURVEYS)

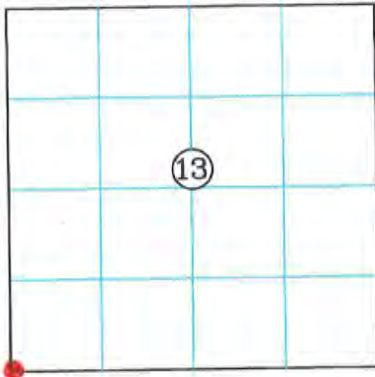
Harrison Co. No. M-21

21-M

T 4 S, R 3 E 2nd Prin. Mer. County Harrison State Indiana

Section Corner common to Sections 13, 14, 23 and 24

EXISTING SURVEYS	
No Original Government Survey Evidence Recovered	Picture
N/A	
Subsequent Corner Restoration	Evidence of Subsequent Corner Restoration Found
Year surveyed ____ By _____ Where filed or recorded _____ Monument _____	Year of search <u>2012</u> By <u>VHM</u>



Signature V.H.M.
Date: December 26, 2012

Perpetuation Record

Monument and accessories established. Include brief description of area. **M-21 CORNER TO SECTIONS 13, 14, 23 & 24, T-4-S, R-3-E**

RESTORED CORNER POSITION ON THE EAST-WEST SECTION LINE AT NEAR PROPORTIONAL MEASUREMENTS IN ALL CARDINAL DIRECTIONS. THE POSITION OF THE CORNER IS SUPPORTED BY MEASUREMENTS TO ADJACENT MONUMENTS IN ALL CARDINAL DIRECTIONS AND BY VERY OLD AND DISTINCT CULTURAL FEATURES IN THE VICINITY. THE CORNER POSITION FELL IN A CULTIVATED FIELD AND PRIOR TO RESTORING THE CORNER I HAD SEVERAL CONVERSATIONS WITH MR. ROBERT MATHES AND MR. ROBERT WELMAN CONCERNING THE LOCATION OF THIS CORNER. NEITHER COULD REMEMBER A CORNER IN THE FIELD AND BOTH MEN HAVE ACCEPTED THE OLD NORTH-SOUTH FENCE LINE AS THE SECTION LINE. THERE ARE ALSO SEVERAL GENERATIONS OF SURVEYS BY ROBERT LEE ISGRIGG THAT DEPICTED THIS CORNER AS BEING A FRAGMENTED STONE. AS CITED ABOVE, MR. MATHES HAS FARMED AND CULTIVATED THIS VICINITY FOR OVER FIFTY (50) YEARS AND COULD NOT RECALL A STONE EVERY BEING THERE. A WITNESS MONUMENT WAS SET 44.5' WEST ALONG THE SECTION LINE FROM THE CORNER. THE WITNESS MONUMENT IS A #5 BY 30" STEEL PIN WITH A 3/4" ALUMINUM DISK STAMPED TO DEPICT THE CORNER POSITION. ACCESSORIES ESTABLISHED FOR THE WITNESS MONUMENT:
UTILITY POLE, NORTH, 90.64' TO A MAG NAIL 0.6' UP ON THE E. SIDE
UTILITY POLE W/TRANSFORMER, N39°W, 102.87' TO A MAG NAIL 0.6' UP ON THE NORTHEAST SIDE
UTILITY POLE, S2°W, 65.45' TO A MAG NAIL UP 0.6' ON THE E. SIDE
SUGAR 22", S84°W, 62.94'
"T" FENCE POST W/HARRISON COUNTY SURVEY SIGN, S38°W, 4.0'
RLI-SPC, N89°7'31"W, 715.65'
RLI-SPC, S85°01'30"E, 706.57'

N: 1062336.03 { USGS
E: 192551.02 { W-13

N: 1060071.30 { Corner
E: 189916.05 {

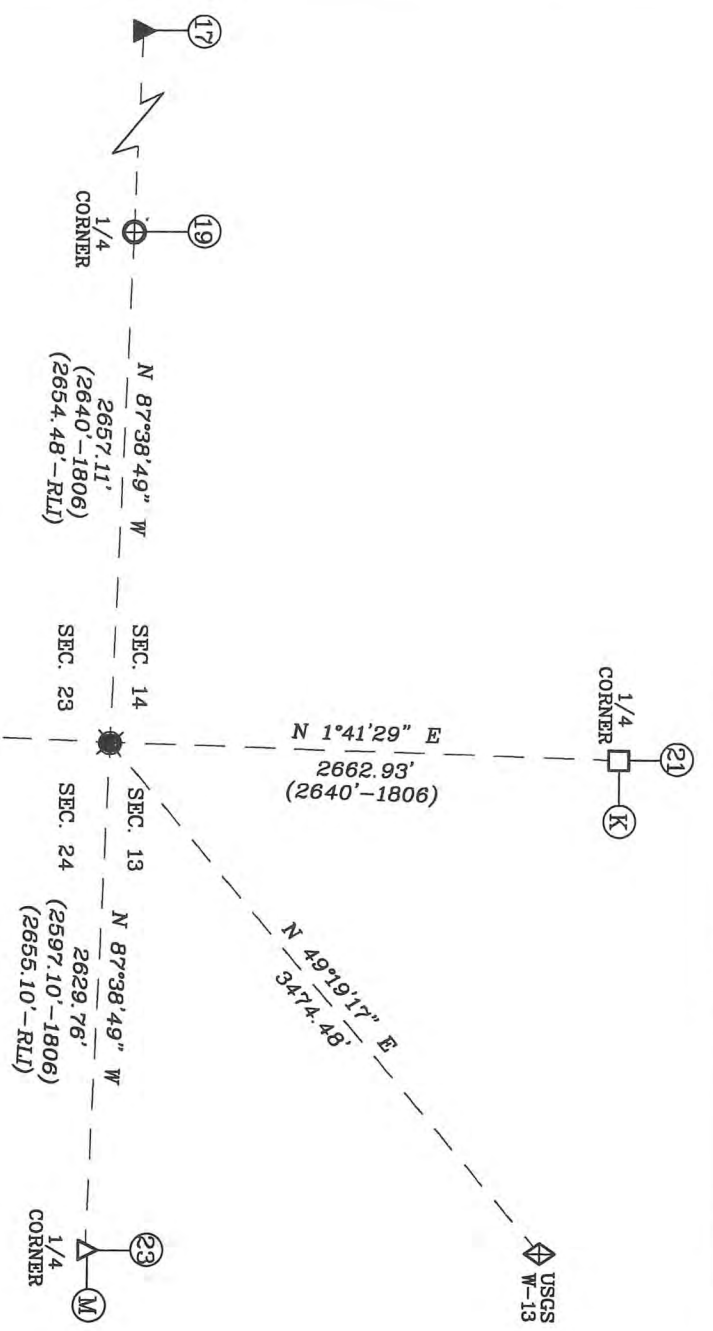
Herold K. Lamb 2012

21-0

Handwritten scribbles

SECTIONS 13, 14, 23 & 24,
TOWNSHIP 4 SOUTH, RANGE 3 EAST,
HARRISON TOWNSHIP,
HARRISON COUNTY, INDIANA

FOR RECORDING INFORMATION



SURVEYOR'S CERTIFICATE

I, VICTOR H. MCCAULEY, PROFESSIONAL LAND SURVEYOR, REGISTERED BY THE LAWS OF THE STATE OF INDIANA, HEREBY DECLARE THAT I HAVE RESTORED AND PERPETUATED THE SECTION CORNER COMMON TO SECTIONS 13, 14, 23 & 24, TOWNSHIP 4 SOUTH, RANGE 3 EAST, HARRISON TOWNSHIP, HARRISON COUNTY, INDIANA IN ACCORDANCE WITH IAC TITLE 865, THE RULES FOR SURVEYS OF PUBLIC LANDS AND THE STATUTES OF THE STATE OF INDIANA, ALL TO THE BEST OF MY KNOWLEDGE AND BELIEF.

VICTOR H. MCCAULEY INDIANA LS# S0336

DATE OF SURVEY: DEC. 26, 2012

LAST DATE OF FIELD WORK: DEC. 13, 2012

DECLARATION

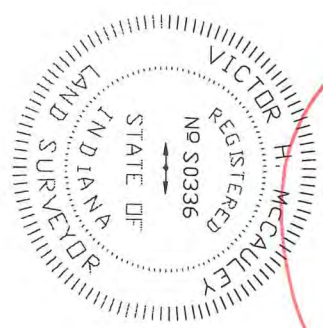
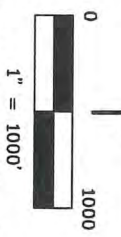
I affirm under the penalties of perjury, that I have taken responsible care to redact each Social Security number in this document, unless required by law.

DECLARANT

Signature of Declarant: V.H.M.

Printed Name of Declarant: VICTOR H. MCCAULEY

GRD NORTH PER INDIANA STATE PLANE COORDINATE SYSTEM, EAST ZONE, 1983 (2012) DATUM, PER G.P.S. OBSERVATION.



LEGEND

- HISTORICAL STONE (SEE REPORT)
- ⊕ EXISTING MAG HUB IN CONC. PLUG (SEE REPORT)
- REFERENCE MONUMENT SET STEEL PIN W/3/4" ALUM. DISC STAMPED TO DEPICT CORNER POSITION (SEE REPORT)
- EXISTING STEEL PIN (SEE REPORT)
- EXISTING MAG NAIL (SEE REPORT)
- ▲ EXISTING RAILROAD SPIKE (SEE REPORT)
- 1806 1806 ORIGINAL SURVEY MEASUREMENTS
- RLI ROBERT L. ISGRIGG I.S. 365
- USGS W-13 N: 1062396.03 E: 192561.02
- (N) HARRISON COUNTY REFERENCE INDEX NUMBER

THIS SURVEY IS BASED ON THE INDIANA STATE PLANE COORDINATE SYSTEM, EAST ZONE, 1983 (2012) ADJUSTMENT U.S. SURVEY FOOT. THE DISTANCES SHOWN ARE SEA GRID DISTANCES BASED ON COMBINED SCALE FACTOR OF 0.99996222. TO CONVERT THE SURVEY DISTANCES TO HORIZONTAL GROUND LEVEL DISTANCES DIVIDE THE SURVEY DISTANCES BY THE SCALE FACTOR.

FOR A MORE COMPLETE DESCRIPTION OF EACH CORNER SEE THE LAND CORNER RECORD CARD ON FILE WITH THE HARRISON COUNTY SURVEYOR. THIS SURVEY IS NOT COMPLETE WITHOUT THE SURVEY PLAT AND SURVEYOR'S REPORT.

MCCAULEY & COMPANY, INC., P.S.C.
PROFESSIONAL LAND SURVEYORS
P.O. BOX 39
ELIZABETH, IN 47117-0039
TELEPHONE: 812-969-2186
mccauleypsc@frontier.com

FOR: HARRISON COUNTY SURVEYOR
HAROLD KLINSTIVER
245 ATWOOD STREET, SUITE 219
CORYDON, IN 47112

PLAT OF SURVEY
2012 HARRISON COUNTY PERPETUATION PROJECT

0-21

SITUATED IN SECTIONS 13, 14, 23 & 24, TOWNSHIP 4 SOUTH, RANGE 3 EAST, HARRISON TOWNSHIP,
HARRISON COUNTY, INDIANA.

REPORT OF SURVEY

THIS SURVEY WAS PERFORMED FOR HAROLD KLINSTVER, HARRISON COUNTY SURVEYOR AS A PERPETUATION PROJECT FOR THE SECTION CORNER TO SECTIONS 13, 14, 23 & 24, TOWNSHIP 4 SOUTH, RANGE 3 EAST, HARRISON TOWNSHIP, HARRISON COUNTY, INDIANA. THIS SURVEY IS A CONTINUATION OF SEVERAL PRIOR SURVEYS, IN THE SAME VICINITY, BY THIS FIRM.

THE ORIGINAL GOVERNMENT SURVEYS WERE CONDUCTED BY JOSEPH H. SARWELL, DEPUTY SURVEYOR IN JANUARY OF 1806. SUBSEQUENT SURVEYS WERE PERFORMED BY HARRISON COUNTY SURVEYORS AND PRIVATE SURVEYORS AS CITED BELOW. THE ORIGINAL AND SUBSEQUENT SURVEY NOTES ARE ON FILE IN THE HARRISON COUNTY SURVEYOR'S OFFICE.

PRIOR TO PERFORMING THIS SURVEY, I REVIEWED THE AVAILABLE ORIGINAL, SUBSEQUENT AND PRIVATE SURVEY NOTES. I RESEARCHED PERTINENT DEEDS AND ADJOINING DEEDS. I CONTACTED ADJOINING LAND OWNERS, CONSULTED WITH THE HARRISON COUNTY SURVEYOR AND OTHER LOCAL SURVEYORS FOR INFORMATION PERTAINING TO THE LOCATION OF CORNERS NEEDED TO PERFORM THIS SURVEY.

THE CORNER RECOVERED AND PERPETUATED BY THIS SURVEY IS MARKED IN THE LEGEND. THE BEARING BETWEEN MONUMENTS IS GRID NORTH AS DETERMINED BY GPS SURVEYS.

HORIZONTAL AND VERTICAL CONTROLS FOR THIS SURVEY ARE BASED ON STATIC AND RTK GPS METHODS AND COORDINATES WERE CONSTRAINED TO ANNGS OPUS SOLUTION POSITION, INDIANA STATE PLANE COORDINATE SYSTEM, EAST ZONE, 1983 (2012) DATUM, FOR AN ON-SITE GPS BASE STATION. THIS IS A RETRACEMENT "RURAL CLASS SURVEY" AS DEFINED BY 865 IAC 1-12 SECTION 7, PARAGRAPH 3 (e-3) AND THE FIELD WORK IS WITHIN THE "RELATIVE POSITIONAL ACCURACY" SPECIFICATIONS CITED THEREIN.

CONVENTIONAL TERRESTRIAL TRAVERSES WERE USED TO DETERMINE CORNER POSITIONS THAT WERE DEEMED UNSUITABLE FOR GPS OBSERVATIONS. THE POSITION OF MONUMENTS WAS VERIFIED WITH REDUNDANT MEASUREMENTS. ALL TRAVERSES WERE EITHER CLOSED TRAVERSES OR WERE CONTROLLED BY GPS SURVEY METHODS

THIS SURVEY IS BASED ON THE INDIANA STATE PLANE COORDINATE SYSTEM, EAST ZONE, 1983 (2012) DATUM, U.S. SURVEY FOOT. THE DISTANCES SHOWN ARE SEA LEVEL GRID DISTANCES, BASED ON A COMBINED SCALE FACTOR OF 0.99996222. TO CONVERT SURVEY DISTANCES TO HORIZONTAL GROUND LEVEL DISTANCES, DIVIDE THE SURVEY DISTANCES BY THE SCALE FACTOR

EXISTING MONUMENTS RECOVERED DURING PRIOR SURVEYS

K-21 QUARTER CORNER TO SECTIONS 13 & 14, T-4-S, R-3-E

RECOVERED FIELD STONE ORIENTED IN CARDINAL DIRECTIONS AND IN E-W FENCE LINE. THE STONE IS AT A VERY OLD AND PROMINENT CULTURAL INTERSECTION. THE POSITION OF THE CORNER IS SUPPORTED BY MEASUREMENTS TO ADJACENT MONUMENTS IN ALL CARDINAL DIRECTIONS AND BY VERY OLD AND DISTINCT CULTURAL FEATURES IN THE VICINITY. SEE SURVEY RECORDED AS INSTRUMENT #201103259. CORNER ACCESSORIES ESTABLISHED IN 2011:

SET CARSONITE POST ON THE SOUTH FACE OF THE STONE
SUGAR 30", S75°E, 7.7' W/HARRISON COUNTY SURVEYOR'S SIGN

M-17 CORNER TO SECTIONS 14, 15, 22 & 23, T-4-S, R-3-E

RECOVERED MAGNETIC READINGS IN FAIRVIEW CHURCH ROAD PER PRIOR SURVEYS. SEE SURVEY BOOK 5, PAGE 63 AND INSTRUMENTS #200503223 & 201103259.

M-19 QUARTER CORNER TO SECTIONS 14 & 23, T-4-S, R-3-E

RECOVERED MAG HUB IN A CONCRETE PUG IN FAIRVIEW CHURCH ROAD AS PERPETUATED DURING PRIOR SURVEYS. SEE SURVEYS RECORDED IN SURVEY BOOK 4, PAGE 121, SURVEY BOOK 5, PAGE 63 AND INSTRUMENT #201103259. THE MONUMENT IS AT A VERY OLD AND PROMINENT CULTURAL INTERSECTION. THE POSITION OF THE CORNER IS SUPPORTED BY MEASUREMENTS TO ADJACENT MONUMENTS IN ALL CARDINAL DIRECTIONS AND BY VERY OLD AND DISTINCT CULTURAL FEATURES IN THE VICINITY.

M-21 QUARTER CORNER TO SECTIONS 13 & 24, T-4-S, R-3-E

RECOVERED MAG NAIL 0.3' DEEP IN UNION CHAPEL ROAD. THE MONUMENT IS AT A VERY OLD AND PROMINENT CULTURAL INTERSECTION. THE POSITION OF THE CORNER IS SUPPORTED BY MEASUREMENTS TO ADJACENT MONUMENTS IN ALL CARDINAL DIRECTIONS AND BY VERY OLD AND DISTINCT CULTURAL FEATURES IN THE VICINITY

PLAT OF SURVEY
2012 HARRISON COUNTY PERPETUATION PROJECT

0-21

SITUATED IN SECTIONS 13, 14, 23 & 24, TOWNSHIP 4 SOUTH, RANGE 3 EAST, HARRISON TOWNSHIP,
HARRISON COUNTY, INDIANA.

EXISTING MONUMENTS RECOVERED DURING PRIOR SURVEYS

0-21 QUARTER CORNER TO SECTIONS 23 & 24, T-4-S, R-3-E

RECOVERED #4 STEEL PIN DURING 1998 SURVEYS AS DEPICTED ON 1992 SURVEY OF RECORD IN SURVEY BOOK 1, PAGE 318 (ALSO SEE SURVEY BOOK 3, PAGE 644 & SURVEY BOOK 4, PAGE 310). THE MONUMENT IS AT A VERY OLD AND PROMINENT CULTURAL INTERSECTION. THE POSITION OF THE CORNER IS SUPPORTED BY MEASUREMENTS TO ADJACENT MONUMENTS IN ALL CARDINAL DIRECTIONS AND BY VERY OLD AND DISTINCT CULTURAL FEATURES IN THE VICINITY. SEE SURVEYS OF RECORD IN THE HARRISON COUNTY RECORDS.

USGS MONUMENT W-13, 1937

USGS MONUMENT ON THE WEST SIDE OF OLD HIGHWAY 135 NEAR THE SE CORNER OF JORDAN CEMETERY.

SECTION CORNER RESTORED

M-21 CORNER TO SECTIONS 13, 14, 23 & 24, T-4-S, R-3-E

RESTORED CORNER POSITION ON THE EAST-WEST SECTION LINE AT NEAR PROPORTIONAL MEASUREMENTS IN ALL CARDINAL DIRECTIONS. THE POSITION OF THE CORNER IS SUPPORTED BY MEASUREMENTS TO ADJACENT MONUMENTS IN ALL CARDINAL DIRECTIONS AND BY VERY OLD AND DISTINCT CULTURAL FEATURES IN THE VICINITY. THE CORNER POSITION FELL IN A CULTIVATED FIELD AND PRIOR TO RESTORING THE CORNER I HAD SEVERAL CONVERSATIONS WITH MR. ROBERT MATHEES AND MR. ROBERT WELMAN CONCERNING THE LOCATION OF THIS CORNER. NEITHER COULD REMEMBER A CORNER IN THE FIELD AND BOTH MEN HAVE ACCEPTED THE OLD NORTH-SOUTH FENCE LINE AS THE SECTION LINE. THERE ARE ALSO SEVERAL GENERATIONS OF SURVEYS BY ROBERT LEE ISGRIGG THAT DEPICTED THIS CORNER AS BEING A FRAGMENTED STONE. AS CITED ABOVE, MR. MATHEES HAS FARMED AND CULTIVATED THIS VICINITY FOR OVER FIFTY (50) YEARS AND COULD NOT RECALL A STONE EVERY BEING THERE. SEE COMMENTS IN THE NARRATIVE BELOW. A WITNESS MONUMENT WAS SET 44.5' WEST ALONG THE SECTION LINE FROM THE CORNER. THE WITNESS MONUMENT IS A #5 BY 30" STEEL PIN WITH A 3/4" ALUMINUM DISK STAMPED TO DEPICT THE CORNER POSITION. ACCESSORIES ESTABLISHED FOR THE WITNESS MONUMENT:
UTILITY POLE, NORTH, 90.64' TO A MAG NAIL 0.6' UP ON THE EAST SIDE
UTILITY POLE W/TRANSFORMER, N39°W, 102.87' TO A MAG NAIL 0.6' UP ON THE NORTH-EAST SIDE
UTILITY POLE, S2°W, 65.45' TO A MAG NAIL UP 0.6' ON THE EAST SIDE
SUGAR 22", S84°W, 62.94'
"T" FENCE POST W/HARRISON COUNTY SURVEY SIGN, S38°W, 4.0'
RLI-SPC, N89°7'31"W, 715.65'
RLI-SPC, S85°01'30"E, 706.57'

NARRATIVE

I HAVE VISITED THIS CORNER POSITION SEVERAL TIMES IN THE PAST FIFTEEN (15) YEARS AND SPOKE WITH MR. ROBERT MATHEES DURING SEVERAL PRIOR SURVEYS PERFORMED BY ME IN THIS VICINITY.

AS STATED ABOVE SURVEYOR ISGRIGG CALLS FOR A FRAGMENTED STONE FOR THIS CORNER. I MADE A THROUGH AND EXHAUSTIVE SEARCH FOR THE FRAGMENTED STONE WITH NO LUCK, HOWEVER I DID RECOVER EIGHT (8) MONUMENTS CITED BY SURVEYOR ISGRIGG AND ATTEMPTED TO RECONCILE THE SURVEY PLAT AND DEED DIMENSIONS WITH THE DISTANCES MEASURED BETWEEN THE RECOVERED MONUMENTS TO NO AVAIL. IN MY OPINION THE ISGRIGG SURVEY CONTAINS SEVERAL DIMENSIONING BLUNDERS. ALSO, THE ISGRIGG SURVEY PLAT CONTAINS SEVERAL DISCREPANCIES WHERE CALLS ARE MADE FOR "NO MONUMENT FOUND" ON CORNERS M-19 & O-21. I HAD VISITED BOTH CORNERS PRIOR TO THE 2000 ISGRIGG SURVEY AND RECOVERED MONUMENTS PER THE COUNTY RECORDS ON BOTH CORNERS AND FURTHERMORE, SURVEYOR ISGRIGG CITES A STONE ON THE SE CORNER OF SECTION 23, I VISITED THAT CORNER IN SEPTEMBER AND OCTOBER OF 1998 AND NO SURVEY STONE EXISTED DURING MY VISITS AND PRIMAVERA VISITED THE CORNER IN 2002 AND DID NOT RECOVER A STONE EITHER. THE ISGRIGG SURVEY PLAT ALSO DEPICTS SEVERAL OTHER EXISTING CORNER MONUMENTS THAT WERE NOT HONORED. THESE EXISTING MONUMENTS ARE NEARLY IN COINCIDENCE WITH THE CORNER I RESTORED, ELIMINATING THE OVERLAPS AND GAPS CITED BY SURVEYOR ISGRIGG.

THEREFORE I RESTORED THE CORNER POSITION PER "THE CHIEF JUSTICE COOLEY DOCTRINE" BY NOT DISRUPTION THE FREE HOLDINGS OR PERPETUATING THE DISCREPANCIES IN THE ISGRIGG SURVEY.

FOR ADDITIONAL CORNER INFORMATION, SEE THE INDIVIDUAL CORNER RECORDS IN THE HARRISON COUNTY SURVEYORS OFFICE.

THIS REPORT OF SURVEY IS NOT COMPLETE WITHOUT THE SURVEY PLAT.

PLAT OF SURVEY
2012 HARRISON COUNTY PERPETUATION PROJECT

0-21

SITUATED IN SECTIONS 13, 14, 23 & 24, TOWNSHIP 4 SOUTH, RANGE 3 EAST, HARRISON TOWNSHIP,
HARRISON COUNTY, INDIANA.

SURVEYOR'S AFFIDAVIT

I, VICTOR H. McCAULEY, PROFESSIONAL LAND SURVEYOR, AND REGISTERED BY THE LAWS OF THE
STATE OF INDIANA, HEREBY CERTIFY THAT I HAVE SURVEYED THE LANDS AS DEPICTED IN SECTIONS 13, 14, 23
& 24, TOWNSHIP 4 SOUTH, RANGE 3 EAST, HARRISON TOWNSHIP, HARRISON COUNTY, INDIANA, IN
ACCORDANCE WITH IAC TITLE 865 AND THE RULES FOR SURVEYS OF PUBLIC LANDS AND THE STATUTES OF THE
STATE OF INDIANA, ALL TO THE BEST OF MY KNOWLEDGE AND BELIEF.

THE PLAT MAP AND SURVEY NOTES ARE AN ACCURATE REPRESENTATION OF THE CORNER RESTORED
DURING THIS SURVEY. LAST DATE OF FIELD WORK WAS DECEMBER 13, 2012.

Victor H. McCauley Dec. 26, 2012
VICTOR H. McCAULEY, INDIANA LS# 0336 DATE

DECLARATION

I AFFIRM, UNDER THE PENALTIES FOR PERJURY, THAT I HAVE TAKEN RESPONSIBLE CARE
TO REDACT, EACH SOCIAL SECURITY NUMBER IN THE DOCUMENT, UNLESS REQUIRED BY
LAW.

DECLARANT

VICTOR H. McCAULEY

Victor H. McCauley
SIGNATURE OF DECLARANT

PRINTED NAME OF DECLARANT

LAND CORNER RECORD
(RECTANGULAR SURVEYS)

21-Q

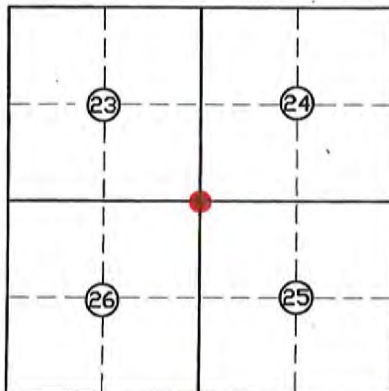
Harrison County Surveyor's Reference Index Number: Q-21

T 4 S R 3 E 2nd Mer., County Harrison State Indiana

Section Corner common to Sections 23, 24, 25 and 26

EXISTING SURVEYS

Picture/Sketch	Picture/Sketch
No Original Government Survey Evidence Recovered	Evidence of Subsequent Corner Restoration Found
N/A	Year of search <u>2017</u> By <u>VHM</u> <u>Recovered mag nail, 0.15' deep, 2.3' South of North edge of pavement of Wiseman Road, 425'± West of centerline of new Highway 135.</u>



Perpetuation Record

Monument and accessories established. Include brief description of area. Monument left as recovered. The corner position is supported by very old and prominent cultural features in the vicinity and by measurements to adjacent corners. Corner accessories established:

Fence Corner, N 77° W, 59.0', MN + 4' on East side.

Utility Pole, S 73° E, 121.0'.

Harrison County Surveyor's sign, North, 7.45'

#4 Rebar, projecting 2.4', S 15° W, 22.91'.

Highway Sign with Harrison County Surveyor's sign, S 23° W, 25.3'.

N: 1054800.00
E: 189731.78

Signature

VHM

Date:

07/28/2017

Harrison County Surveyor 8-8-17

HARRISON

COUNTY

CORNER U - 21

TOWNSHIP 4

RANGE 3 EAST

2ND

PRINCIPAL MERIDIAN

LOCATION	DESCRIPTION OF		DISTANCE FROM CORNER	BEARING FROM CORNER	DATE CHECKED	CHECKED BY	FIELD BOOK	REMARKS
	MONUMENT	REFERENCE						
Common Cor. 25, 26, 35, 36	#5 SPC	CL-Lake Rd.	67.9'	N	6-26-06	TOB	5/108	Post Placed
		Fence Corn. Post	44.8'	S 84 W				
		Fence Corn. Post	35.9'	S 63 E				

21-U

21-U

HARRISON COUNTY SURVEYOR 5/108
CORNER MONUMENT RECOVERY & REFERENCE RECORD

TWNSHIP: 4 RANGE: 3 SECTION: _____

CORNER REF. I.D.: 4-21
DATE: 6/26/06

MONUMENT INFORMATION

LOCATION: COMMON CORNER SEC 25-26-35-36

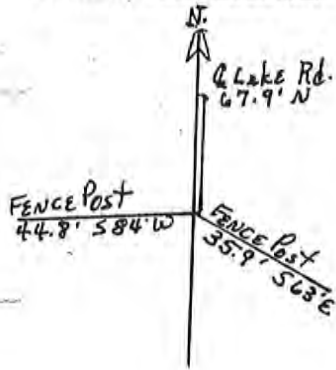
DESCRIPTION: #5 SPC

ADDITIONAL DISTINGUISHING CHARACTERISTICS: _____

SIGN PLACED: () YES DATE: 1/1

WITNESS MARKERS

TYPE	SIGN	BLAZE	ADDITION DESCRIPTION
1. CL LAKE RD	()	()	67.9' N
2. FENCE CORNER POST	()	()	44.8' S 84' W
3. FENCE CORNER POST	()	()	35.9' S 63' E



	2	4	6	8	10	12	14	16	18	20	22	24
A	1	2	3	4	5	6	7	8	9	10	11	12
B	13	14	15	16	17	18	19	20	21	22	23	24
C	25	26	27	28	29	30	31	32	33	34	35	36
D	37	38	39	40	41	42	43	44	45	46	47	48
E	49	50	51	52	53	54	55	56	57	58	59	60
F	61	62	63	64	65	66	67	68	69	70	71	72
G	73	74	75	76	77	78	79	80	81	82	83	84
H	85	86	87	88	89	90	91	92	93	94	95	96
I	97	98	99	100	101	102	103	104	105	106	107	108
J	109	110	111	112	113	114	115	116	117	118	119	120
K	121	122	123	124	125	126	127	128	129	130	131	132
L	133	134	135	136	137	138	139	140	141	142	143	144
M	145	146	147	148	149	150	151	152	153	154	155	156
N	157	158	159	160	161	162	163	164	165	166	167	168
O	169	170	171	172	173	174	175	176	177	178	179	180
P	181	182	183	184	185	186	187	188	189	190	191	192
Q	193	194	195	196	197	198	199	200	201	202	203	204
R	205	206	207	208	209	210	211	212	213	214	215	216
S	217	218	219	220	221	222	223	224	225	226	227	228
T	229	230	231	232	233	234	235	236	237	238	239	240
U	241	242	243	244	245	246	247	248	249	250	251	252
V	253	254	255	256	257	258	259	260	261	262	263	264
W	265	266	267	268	269	270	271	272	273	274	275	276
X	277	278	279	280	281	282	283	284	285	286	287	288
Y	289	290	291	292	293	294	295	296	297	298	299	300

RECOVERED BY: UM DATE: 6/26/06
 DATE: / /
 DATE: / /

REFERENCED BY: TOB DATE: / / 07
 DATE: / /
 DATE: / /

RECORDED IN PERPETUATION RECORDS BOOK:
 BY: TOB DATE: 1/28/08

LAND CORNER RECORD
(RECTANGULAR SURVEYS)

21-Y

Harrison County Surveyor's Reference Index Number: Y-21

T 4 S R 3 E 2nd Mer., County Harrison State Indiana

South Section Corner to Sections 35 and 36

EXISTING SURVEYS

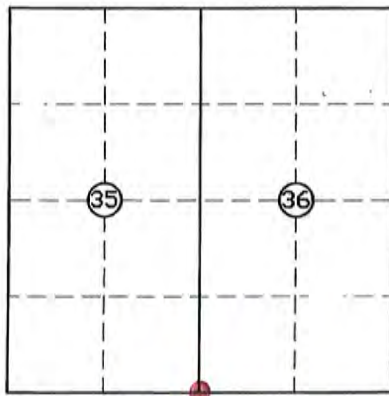


No Original Government Survey Evidence Recovered

Evidence of Subsequent Corner Restoration Found

The position of this corner is further supported by very old and distinct cultural features in the vicinity and measurements to adjacent verifiable monuments.

Year of search 2016 By VHM
Recovered nail shank in Harrison-Washington Road, fallow field to South, cultivation to the Northwest and woods to the Northeast.



Perpetuation Record

Monument and accessories established. Include brief description of area. Set #5 X 0.8' steel pin, flush. Corner accessories established: Sugar, 10", N 14° E, 23.24', to the bottom nail of a triangle Harrison County Surveyor's sign.
Carsonite Post, South, 20.6'.

Resource Grade
 N: 1044173.1
 E: 189459.4

Signature

V. H. M.

Date:

06/23/2016

HARRISON

COUNTY

23-U

CORNER U-23 TOWNSHIP 4 RANGE 3 EAST 2ND PRINCIPAL MERIDIAN

LOCATION	DESCRIPTION OF		DISTANCE FROM CORNER	BEARING FROM CORNER	DATE CHECKED	CHECKED BY	FIELD BOOK	REMARKS
	MONUMENT	REFERENCE						
NW Corner NE $\frac{1}{4}$ Sec. 36	Mag. Nail CL Lake Rd.	Utility Pole w/HCSS	85.9'	N 60 W	6-26-06	TOB	5/106	Post Placed
		Tele. Ped	48.3'	S58E				
		16" Cherry	49.3'	S 10 E				
		CL Paved Entry	68'	E				

23-U

HARRISON COUNTY SURVEYOR 5/106
CORNER MONUMENT RECOVERY & REFERENCE RECORD

TWNSHIP: 4 RANGE: 3 SECTION: 36

CORNER REF. I.D. U-23
DATE: 6/26/06

MONUMENT INFORMATION

LOCATION: NW CORNER NE 1/4 SEC 36

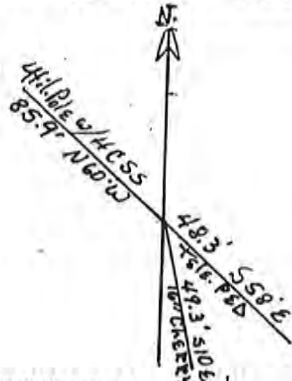
DESCRIPTION: MAG. NAIL
ON LAKE ROAD

ADDITIONAL DISTINGUISHING CHARACTERISTICS:

SIGN PLACED: () YES DATE: 1/1

WITNESS MARKERS

TYPE	SIGN	BLAZE	ADDITION DESCRIPTION
1. 7" POLE w/ HCSS	(X)	()	85.9' N60°W
2. TABLE PED.	()	()	48.3' S58°E
3. 16" CHERRY	()	()	49.3' S10°E



	1	2	3	4	5	6	7	8	9	10	11	12	13	14	15	16	17	18	19	20	21	22	23	24	
A																									
B																									
C																									
D																									
E																									
F																									
G																									
H																									
I																									
J																									
K																									
L																									
M																									
N																									
O																									
P																									
Q																									
R																									
S																									
T																									
U																									
V																									
W																									
X																									
Y																									
Z																									

RECOVERED BY: VM

DATE: 6/26/06
DATE:
DATE:

REFERENCED BY: TOB

DATE: 1/107
DATE:
DATE:

RECORDED IN PERPETUATION RECORDS BOOK:
BY: TOB

DATE: 1/28/08

25-G

HARRISON

CITY

CORNER G-25

TOWNSHIP 4S

RANGE 3 E EAST

2ND

PRINCIPAL MERIDIAN

LOCATION	DESCRIPTION OF		DISTANCE FROM CORNER	BEARING FROM CORNER	DATE CHECKED	CHECKED BY	FIELD BOOK	REMARKS
	MONUMENT	REFERENCE						
E 1/4 Corn. Sec. 12	#5 Rebar	33" Red Oak	13.5'	S 40 E	2006	TOB GDB	5/64	Sign Placed
		18" Sass.	24.7'	S 19 E				
		Centerline Shiloh Rd.	61.1'	South				
		22" Sugar	26.0'	S 1 W				

5/64

SHILOH ROAD
SET: REFERENCE

25-6

FROM 773 TO 1 = 2657.18

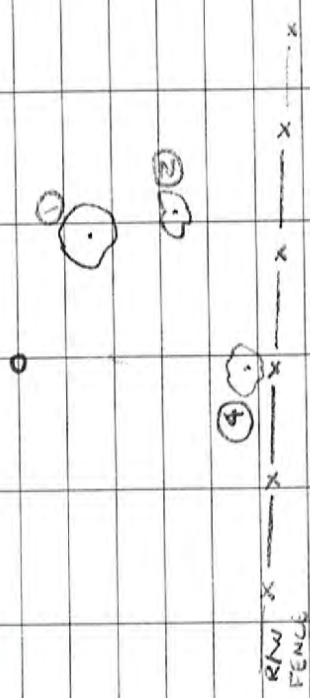
FROM 773 TO 2 = 25.847

E 1/4 CORNER Sec 12-4-3

4677 SET 45 x 30" W/ PLASTIC

CAP FLUSH

G-25



- ① 23" RED OAK 519°E 51.9' 22" SUGAR
- ② 13.5 29.7' 61.1' 26.0'
- ③ 4" SHILOH SOUTH 51°W
- ④ W/WIRE W/WIRE HCS SIGN

114

6/12/06
1cm
MIF
DWW

G-1

5/65
-ARC: 70°

W 1/4 CORNER Sec 7-4-4

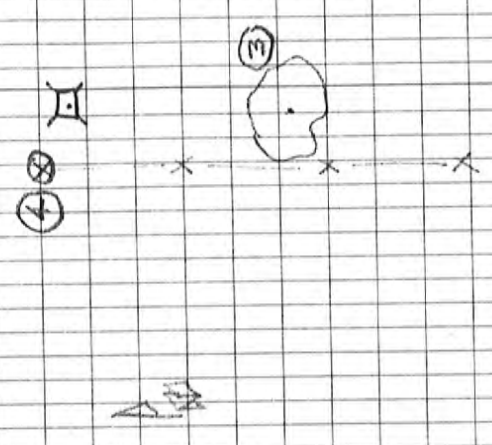
#3 1/2" SQ STEEL ROD + 0.5' ABOVE

GROUND

SHILOH ROAD

ROAD

22



- ① SHILOH NORTH 01.0'
- ② STUMP POLE NORTH 75.1'
- ③ 20" CHERRY 57°W 7.0'
- ④ WOOD POST NORTH 2.0'
- HCS SIGN

114

25-G

HARRISON COUNTY SURVEYOR
CORNER MONUMENT RECOVERY & REFERENCE RECORD

TWNSHP: 4S RANGE: 3E SECTION: 12

CORNER REF. I.D.: G-25
DATE: 6/1/06

MONUMENT INFORMATION

LOCATION: E 1/4 CORNER SEC 12

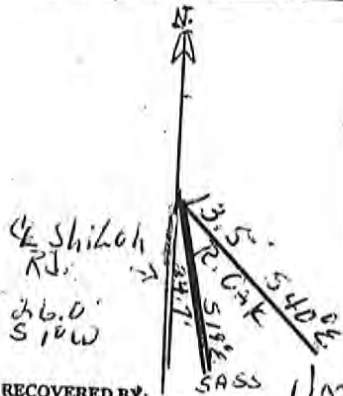
DESCRIPTION: #5 REBAR 1/2" CAP

ADDITIONAL DISTINGUISHING CHARACTERISTICS:

SIGN PLACED: () YES DATE: 1/1

WITNESS MARKERS

TYPE	SIGN	BLAZE	ADDITION DESCRIPTION
1.33" RED OAK	()	()	13.5' S 40° E
2.18" SASS	(X)	()	24.7' S 19° E
3.4 SHILOH Rd	()	()	0.1' South



	1	2	3	4	5	6	7	8	9	10	11	12	13	14	15	16	17	18	19	20	21	22	23	24	
A																									
B																									
C																									
D																									
E																									
F																									
G																									
H																									
I																									
J																									
K																									
L																									
M																									
N																									
O																									
P																									
Q																									
R																									
S																									
T																									
U																									
V																									
W																									
X																									
Y																									
Z																									

RECOVERED BY: SASS UM

DATE: 6/1/06
DATE: / /
DATE: / /

REFERENCED BY: TOB
GDB

DATE: 1/1/06
DATE: / /
DATE: / /

RECORDED IN PERPETUATION RECORDS BOOK:
BY: Thomas W. Bule

DATE: 1/1/06

LAND CORNER RECORD
(RECTANGULAR SURVEYS)

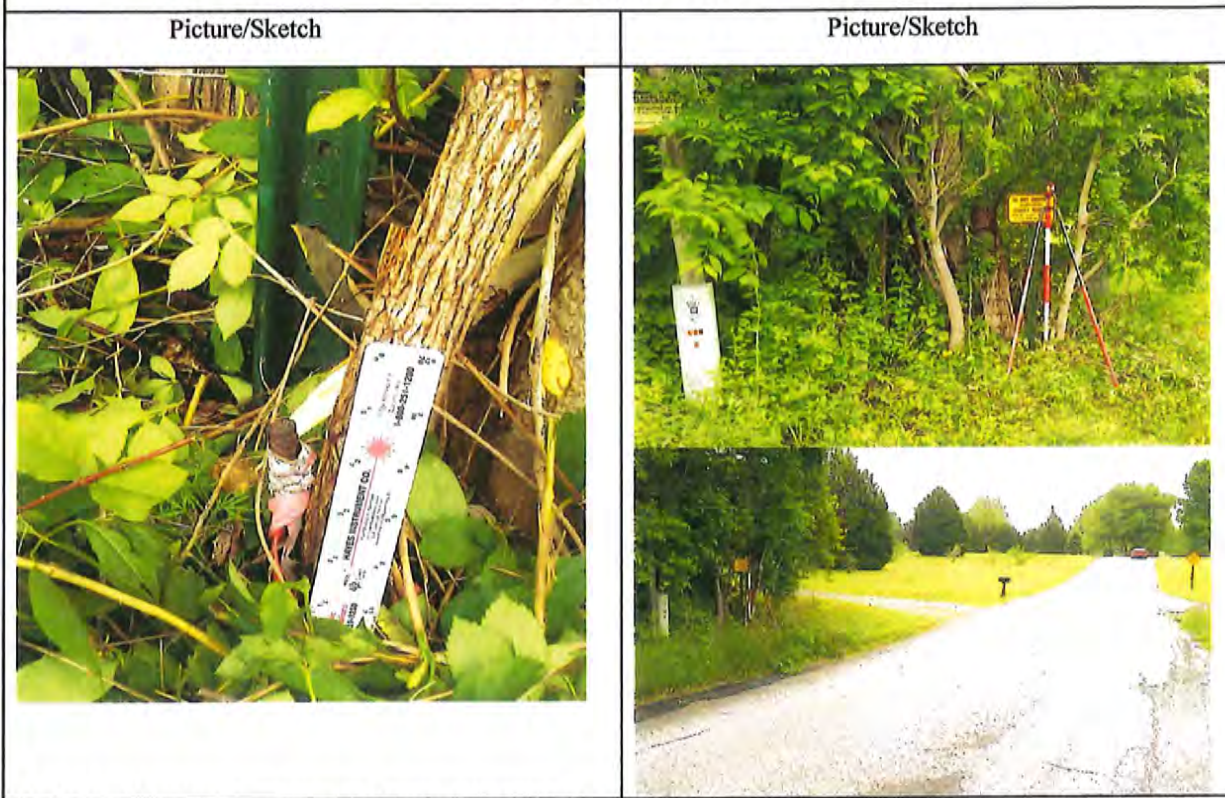
25-Q

Harrison County Surveyor's Reference Index Number: Q-25

T 4 S R 3 E 2nd Mer., County Harrison State Indiana

East Corner common to Sections 24 and 25

EXISTING SURVEYS

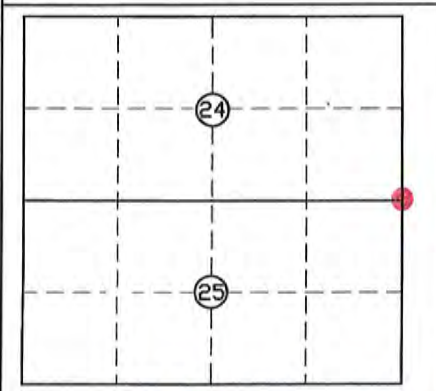


No Original Government Survey Evidence Recovered

Evidence of Subsequent Corner Restoration Found

See surveys recorded in Survey Book 3, Pages 262 and 651.

Year of search 2016 By VHM
 Recovered #4 steel pin (Primavera LS #0131), projecting 0.3'. Pin is located 7 feet North of North edge of pavement of Wiseman Road at "T" intersection with Perserverance Chapel Road, with rectangular Harrison County Surveyor's sign North 0.5' and 134.1'± North of Corner Q-1, T-4-S, R-4-E.



Perpetuation Record
 Monument and accessories established. Include brief description of area. Monument left as recovered. Corner accessories established:
Telephone Pedestal, N 75° W, 6.7'.
Cedar, 12" N 6° W, 3.5'.
Fire Hydrant, S 52° E, 97.1'.
Stop Sign, S 18° E, 41.15' with a triangle Harrison County Surveyor's sign.

Signature VHM
 Date: 06/23/2016

Resource Grade
 N: 1054551.9
 E: 194983.5

HARRISON

COUNTY

25-0

CORNER U-25

TOWNSHIP 4

RANGE 3

EAST

PRINCIPAL MERIDIAN

LOCATION	DESCRIPTION OF		DISTANCE FROM CORNER	BEARING FROM CORNER	DATE CHECKED	CHECKED BY	FIELD BOOK	REMARKS
	MONUMENT	REFERENCE						
SE Corner Sec. 25	#5 SPC	Center Line Lake Road	42'	S22W	6-26-06	TOB	5/10 4	
		FENCE post w/ HCSS	111'	S 24 W				

25-U

HARRISON COUNTY SURVEYOR
CORNER MONUMENT RECOVERY & REFERENCE RECORD

5/04

TWNSHIP: 4 RANGE: 3 SECTION: 25

CORNER REF. ID: 4-25
DATE: 6/26/06

MONUMENT INFORMATION

LOCATION: SE CORNER SEC 25

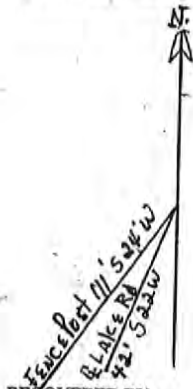
DESCRIPTION: # 5 SPC

ADDITIONAL DISTINGUISHING CHARACTERISTICS:

SIGN PLACED: () YES DATE: 1/1

WITNESS MARKERS

TYPE	SIGN	BLAZE	ADDITION	DESCRIPTION
1. <u>LAKE RD.</u>	()	()	<u>42'</u>	<u>S 22 W</u>
2. <u>FENCE POST W/HOSS</u>	()	()	<u>111'</u>	<u>S 24 W</u>
3.	()	()		



	2	4	6	8	10	12	14	16	18	20	22	24	
A	1	3	5	7	9	11	13	15	17	19	21	23	25
B	6	8	10	12	14	16	18	20	22	24			
C	11	13	15	17	19	21	23	25					
D	16	18	20	22	24								
E	21	23	25										
F	26	28	30										
G	31	33	35										
H	36												
I													
J													
K													
L													
M													
N													
O													
P													
Q													
R													
S													
T													
U													
V													
W													
X													
Y													
Z													

RECOVERED BY: UM

DATE: 6/26/06

DATE: / /

DATE: / /

REFERENCED BY: TOB

DATE: / /

DATE: / /

DATE: / /

RECORDED IN PERPETUATION RECORDS BOOK:

BY: TOB

DATE: 1/28/08