

2GEN

approaches to

supporting

students

United Way
of Central Indiana

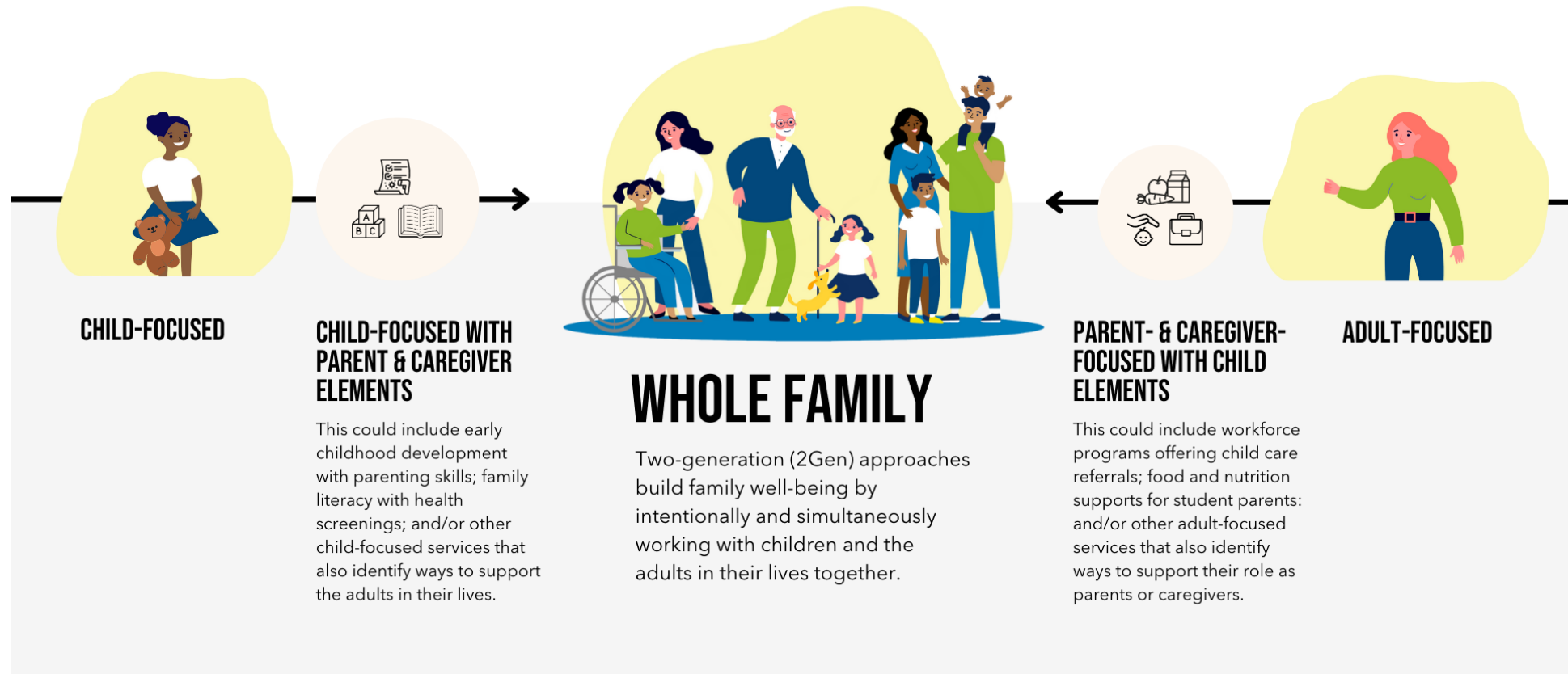


History of Two Generational Approaches

- **2Gen as a term coined in the 1980s by the Foundation for Child Development**
- **2012: publication of “Two Generations, One Future” report by Ascend at the Aspen Institute**
 - Ascend has continued to develop a network of partners and fellows to pursue policy and program changes that support whole families
- **Different programs use similar terms to refer to the same idea: that families are fundamental to human development**
 - Some entities use terms like whole family, multigenerational, intergenerational
 - All of these terms reflect and embrace the diverse shapes, sizes, and structures of families to ensure all family members can reach their full potential

Two Generational Continuum

TWO-GENERATION (#2GEN) APPROACHES CENTER WHOLE FAMILIES



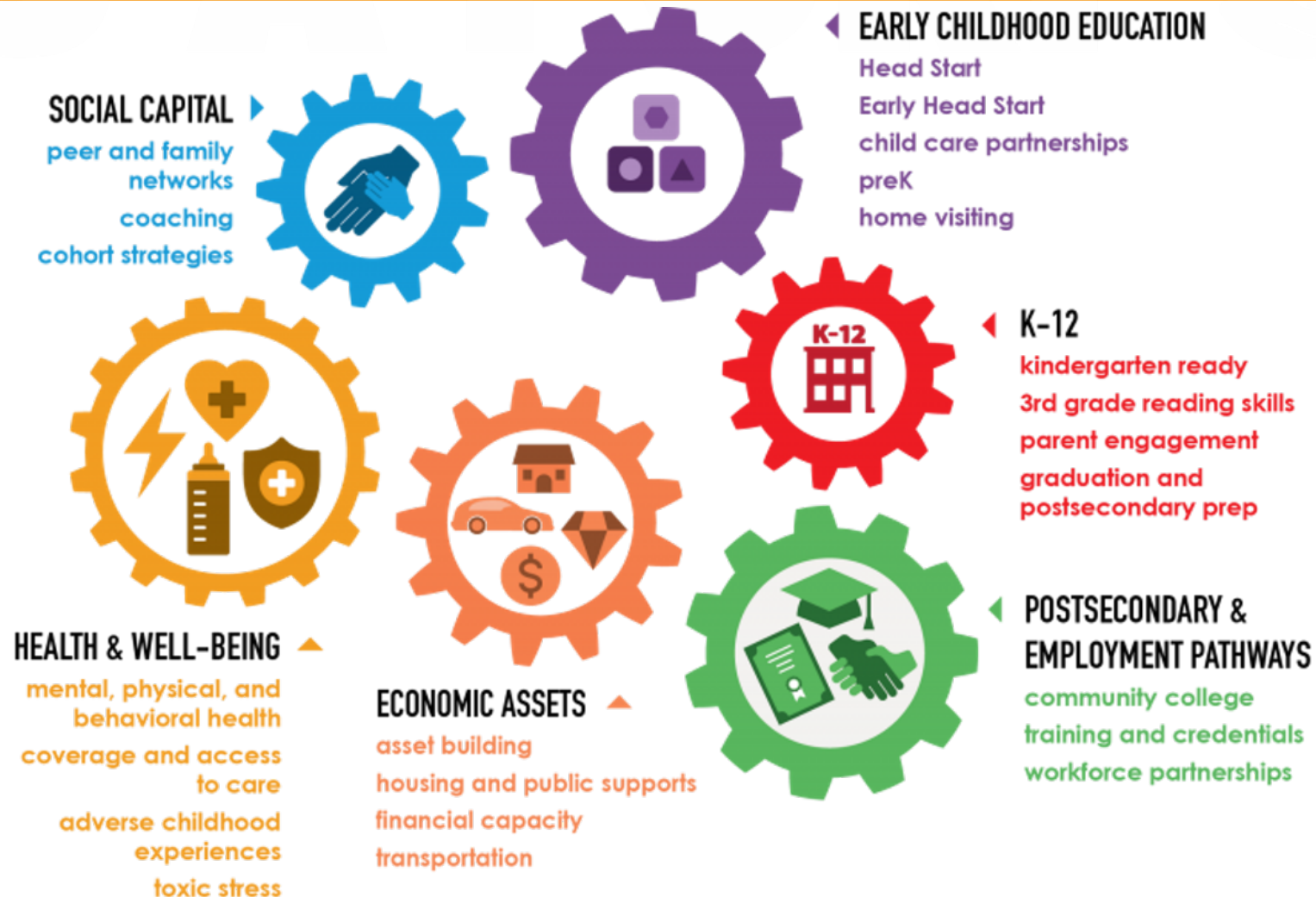
Two Generational Approaches to Family Support

- **Approach families – as they define/view themselves – as whole units rather than constituent parts**
 - Don't focus solely on the child or the adult; recognize the interconnectedness and interdependency
- **Treat families as experts and as people with something to contribute to program design/implementation**
- **Identify family goals and ensure programs align and integrate with those goals to maximize long-term impact**

Principles of 2Gen Design

- **Measure and account for outcomes for both adult and child**
 - Outcomes are at the heart of 2Gen approaches; need data to show outcomes and to refine programs
- **Listen to the voices and recommendations of families**
 - Co-design policies/programs
 - Policy/program provides scaffolding; families drive success
- **Ensure racial, gender, and economic equity**
 - Policy/programs need to account for systemic discrimination and reflect the demographic realities of families
- **Foster evidence and innovation together**
- **Align & link systems and funding streams**
 - Blend and braid where you can
 - Reduce administrative burdens and cliffs

The Six Components of 2Gen Approaches



UWCI Snapshot: Our Core Issues



BASIC NEEDS

to provide essential services to
our neighbors in need



EARLY CARE AND LEARNING

to increase literacy outcomes
and learning success for
young children



ECONOMIC MOBILITY

to increase earnings and build
employment pathways



SAFE AND AFFORDABLE HOUSING

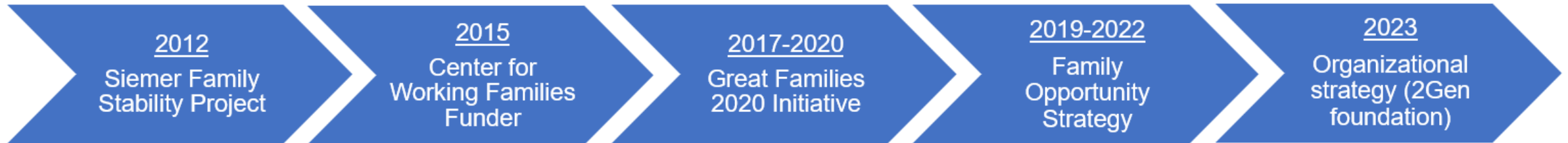
to increase housing security
and reduce homelessness

UWCI Snapshot: Our How

- Grounded in equity
- Data driven and informed
- 2Gen approach is the foundation
- Value proposition – top of mind; all strategies grounded in our toolkit
- What does it mean to UWCI to be a partner in this work?
 - Funder, Convenor, Connector, Builder, Advocate, Research, Program Delivery



UWCI's 2Gen Journey

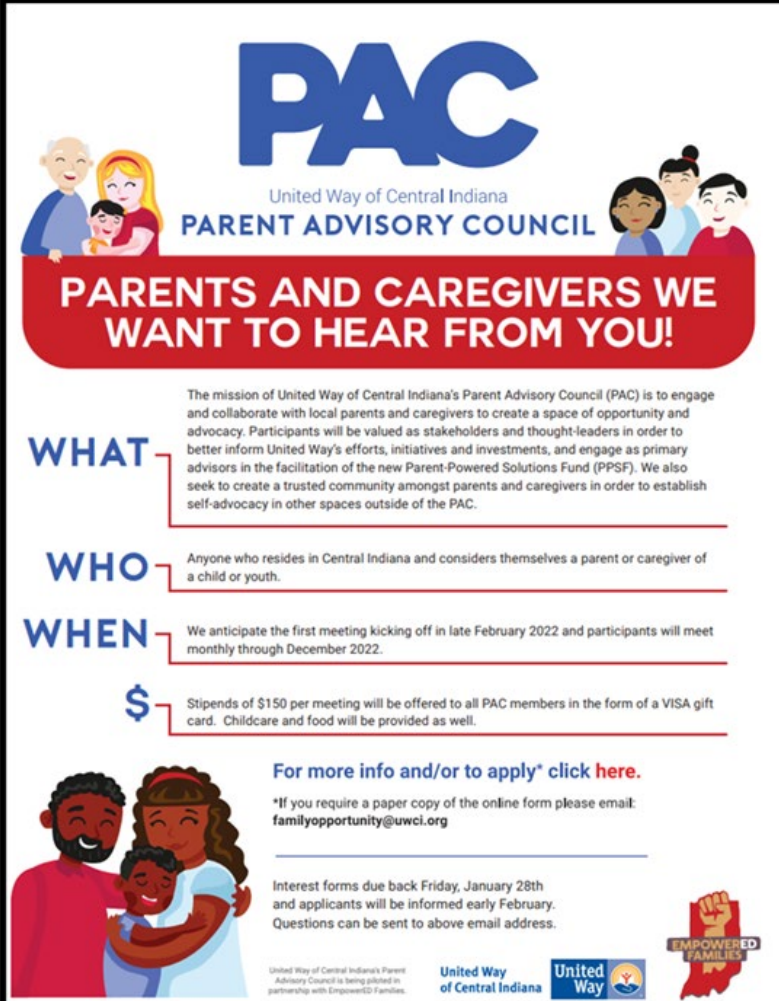


- Refining - Scaling - Sustaining (cycle)
- Building a network of partners, intermediaries and funders through peer learnings, formal convenings, informal gatherings, etc.
- Elevating emerging practices, partnerships across the sector, and identifying research-based best practices
- Leveraging Ascend at the Aspen Institute's 2Gen approach, research, and network

UWCI: Advancing Equity

Creation of a parent advisory council and fund

2Gen Principles (Ascend)	UWCI's Approach
1. Measure and account for outcomes for both children and their parents	Robust data collection and reporting model, in partnership with Indiana's MPH
2. Engage and listen to the voices of families	Investing into organizations that engage families and leverage their voices to inform and shape programs
3. Ensure equity and address disparities facing families	Investing in organizations led by and serving primarily BIPOC residents
4. Foster innovation and evidence together	Intentional and innovative investments that optimize 2Gen models and programs
5. Align and link systems & funding streams	Partnerships and collaborations are incentivized across UWCI's 2Gen network



PAC
United Way of Central Indiana
PARENT ADVISORY COUNCIL

PARENTS AND CAREGIVERS WE WANT TO HEAR FROM YOU!

WHAT The mission of United Way of Central Indiana's Parent Advisory Council (PAC) is to engage and collaborate with local parents and caregivers to create a space of opportunity and advocacy. Participants will be valued as stakeholders and thought-leaders in order to better inform United Way's efforts, initiatives and investments, and engage as primary advisors in the facilitation of the new Parent-Powered Solutions Fund (PPSF). We also seek to create a trusted community amongst parents and caregivers in order to establish self-advocacy in other spaces outside of the PAC.

WHO Anyone who resides in Central Indiana and considers themselves a parent or caregiver of a child or youth.

WHEN We anticipate the first meeting kicking off in late February 2022 and participants will meet monthly through December 2022.

\$ Stipends of \$150 per meeting will be offered to all PAC members in the form of a VISA gift card. Childcare and food will be provided as well.

For more info and/or to apply* click [here](#).
*If you require a paper copy of the online form please email: familyopportunity@uwci.org

Interest forms due back Friday, January 28th and applicants will be informed early February. Questions can be sent to above email address.

United Way of Central Indiana's Parent Advisory Council is being piloted in partnership with Empowered Families.

United Way of Central Indiana

United Way

EMPOWERED FAMILIES

UWCI: Measuring Progress

- Pairing of community need with impact data
- Equity-focused strategies and measurement
- Transparency in outcomes (and opportunity)
- Communicating back to our partners
- Partnering with state agencies
- Leveraging tools to support data collection, measurement and communicating the impact

Interactive Data Dashboards

Click each icon below to view the corresponding interactive dashboard.



People
Impacted



ALICE &
Poverty



Economic
Mobility



Educational
Success



Equity in
Action



Healthy
Food
Access



Physical,
Mental &
Behavioral
Health



Safe and
Affordable
Housing
Access &
Retention



Sector
Support



Transportati
on Access

<https://www.uwci.org/impactunited>

Thank you!

**EVERY
PERSON
HAS A
PURPOSE.**

